

# LLADRÓ



HANDMADE PORCELAIN

## NEW CONCEPT

SPRING 2026

# NEW CONCEPT

## EVOLVING PORCELAIN

We reinvent porcelain through contemporary design. Collaborations with international artists and creators, reinterpretations of pop culture icons, and unexpected proposals coexist with the craftsmanship that has defined our brand from the beginning.

Each creation emerges as a fragment of expression: forms that explore new languages, lights that transform space, and objects that engage with life today.

Innovation and artistic vision come together with handcrafted processes to give rise to new proposals. Creations that push the boundaries of porcelain and connect with those who seek works with a distinct identity.







UTOPICAL 2

UNICORN 4

BUNNY 6

IKEBANA 8

MICKEY MOUSE 10

STAR WARS 12

DALÍ 16

LORD GANESHA 18

PIKACHU & FRIENDS 20

ICE CREAM 22

DAHLIA 23

MAJESTIC NIGHTS 24

LOTUS FLOWER 26



**UTOPICAL VASE**  
**01009813**  
 44 x 32 x 34 cm  
 17 1/4 x 12 1/2 x 13 1/2"

This vase joins the *Utopical* universe, a place where imagination and design coexist naturally. Like the rest of the collection, it begins with the observation of nature and transforms it into a contemporary object designed to offer visual appeal without sacrificing function.

The vase is composed of two large porcelain leaves set slightly apart to create a single composition. Each leaf is shaped with geometric forms crossed by reliefs and organic textures reimagined through a contemporary lens.



# UTOPICAL vase



Resting on one of the pieces is an imagined bird, modeled with clean lines yet intricately engraved to capture the details and plumage of the animal. Its decoration features a coral red gradient with a soft, velvety effect. The presence of the bird introduces a narrative accent characteristic of Utopical: small moments where the natural and the imagined meet.

The composition of this vase required more than 400 hours of development by the ornamentation team. It is a functional design that adapts easily to different spaces, adding a touch of color and creativity to any setting, a creation that feels like a fragment of its own world.



# UNICORN

*Unicorn* takes the look of an inflated balloon and brings it into porcelain with a highly visual approach. Its rounded shapes and the pearly luster that covers it create a sense of light volume that defines the entire piece.

The soft-toned mane and multicolored horn break up the white surface and reinforce its playful spirit. The design maintains a natural balance between humor, simplicity and presence.

The piece is handcrafted from start to finish and shows how a childhood game can evolve into a contemporary object. It is a porcelain creation that speaks the design language of today.



**UNICORN**  
01009808  
26 x 26 x 11 cm  
10 1/4 x 10 1/4 x 4 1/4"





**BUNNY (BEIGE)**  
**01040317**  
 12 x 5 x 5 cm  
 4 3/4 x 2 x 2"

**BUNNY (PINK)**  
**01040319**  
 12 x 5 x 5 cm  
 4 3/4 x 2 x 2"

**BUNNY (DARK BLUE)**  
**01040318**  
 12 x 5 x 5 cm  
 4 3/4 x 2 x 2"



# BUNNY



The *Bunny* collection offers a contemporary take on the rabbit, one of the most present motifs in decorative arts and popular iconography. These handcrafted porcelain versions combine clean lines with iridescent finishes in blue, beige and pink that play with the light.

Each piece blends humor and design and adapts to different uses: as an incense holder, a ring holder or simply as a decorative accent with personality. Their presence introduces a playful touch, turning everyday moments into something special.

Small in scale but rich in intention, the collection reflects Lladró's approach to creativity: craftsmanship, design and a contemporary way of looking at the objects that surround us.



**IKEBANA FLOWER**  
**01040320**  
 8 x 11 x 11 cm  
 3 1/4 x 4 1/4 x 4 1/4"

Inspired by the Japanese art of Ikebana, this porcelain creation reinterprets the delicacy and balance of nature. Each petal and pistil, handcrafted one by one with precision, shape a flower that reflects attention to detail and craftsmanship.

# IKEBANA FLOWER



The base of this piece is made from an olfactory porcelain that acts as a natural aroma diffuser. Simply add a few drops of your favorite fragrance to its surface to subtly scent the space.



# DOODLE MICKEY

*Doodle Mickey* arrives as a limited edition of 300 units that brings together technique, design and a playful, modern approach. Its development required nearly 500 hours of technical work and more than 100 hours dedicated exclusively to ornamentation, a process that enhances every detail.

Mickey Mouse, one of the most recognizable characters in animation and a cultural icon since 1928, inspires this porcelain interpretation that reimagines his silhouette through the language of freehand drawing.

The character is crafted in white glazed porcelain, decorated with a black doodle pattern, a spontaneous line reminiscent of clever, light-hearted sketching. The decoration is completed with subtle touches of platinum luster applied to the buttons, nose and gloves, adding highlights and an elegant contrast to the white surface.

The creation is presented on a wooden base, which complements its sculptural presence in this large-format edition.



Disney

LLADRÓ  
HANDMADE PORCELAIN  
SPAIN



DOODLE MICKEY  
01009805  
58 x 31 x 26 cm  
22 3/4 x 12 1/4 x 10 1/4"  
Limited Edition of 300 units





C3PO™ first appeared in 1977 with the release of *Star Wars™: A New Hope*, becoming one of the saga's most recognizable characters from the very beginning. Created by Anakin Skywalker and programmed to master more than six million forms of communication, this protocol droid has been part of the galactic story since its origins, moving between diplomacy, constant worry, and an unintentionally humorous tone that made it unforgettable.

This porcelain version stays true to his iconic golden silhouette. The metallic plates along his body, the circular details on his torso, and the central section with exposed cables are rendered with a clean and precise finish. His slightly raised hand evokes those familiar moments when C3PO tries to stop a situation before it spirals out of control.

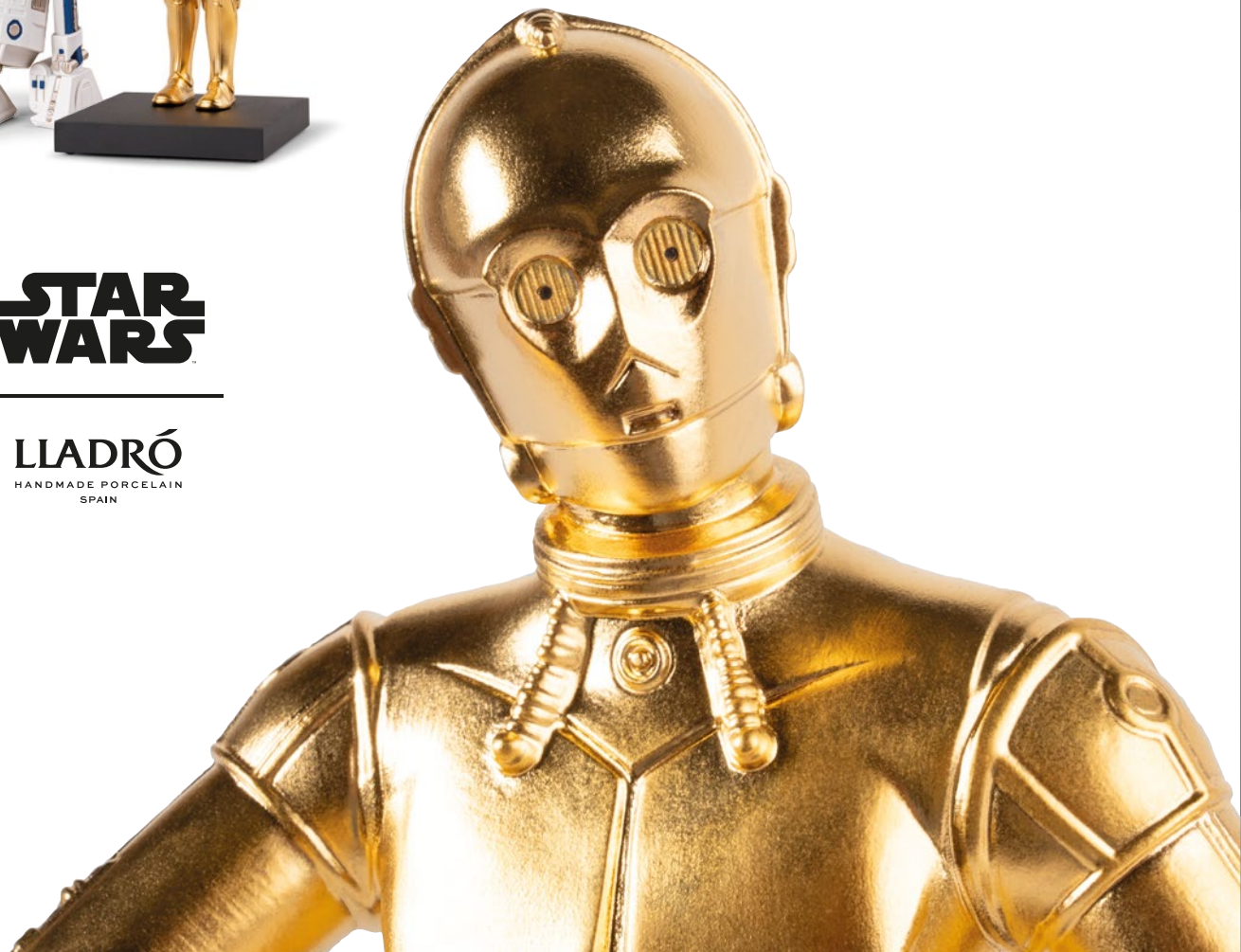
The design preserves the traits that made the character famous and brings them into the world of *Star Wars™* icons crafted in porcelain.

# C3PO™



**STAR  
WARS™**

**LLADRÓ**  
HANDMADE PORCELAIN  
SPAIN



C3PO™  
01009803  
34 x 16 x 14 cm  
13 1/2 x 6 1/4 x 5 1/2"







LLADRÓ  
HANDMADE PORCELAIN  
SPAIN



# DARTH VADER™ HELMET



The Darth Vader™ helmet, an unmistakable icon from the cinematic universe of the Star Wars™ saga, is reinterpreted in porcelain through a detailed technical and decorative process that highlights the character and his singular aesthetic. Crafted in glazed black porcelain, the piece emphasizes the angular lines and striking geometry of the original design.

Standout features include the side hinges and nose section, finished with silver luster to enhance contrast, and remain faithful to the original. The matte black grille, along with the eyes painted with pearl luster over black to create a mirrored effect, intensify the character's enigmatic and instantly recognizable expression. The piece is mounted on a metal base with stand, enhancing its display value and making it ideal for interior spaces.

This creation is part of a limited edition of 1,500 units, making it a highly valuable collectible for Star Wars™ enthusiasts and lovers of contemporary design alike. A porcelain artwork that merges design, technical precision, and cinematic culture.

**DARTH VADER HELMET**  
**01009764**  
33 x 27 x 28 cm  
13 x 10 3/4 x 11"  
Limited Edition of 1,500 units



## DALÍ &amp; SURREALISM



**DALÍ & SURREALISM**  
**01009812**  
 42 x 29 x 23 cm  
 16 ½ x 11 ½ x 9"  
 Limited Edition of 250 units

Dalí, one of the most singular and widely recognized artists of the 20th century, is portrayed in this creation that captures his unmistakable personality. A tribute to one of the most influential cultural figures of our time.

Considered one of the leading representatives of Surrealism, Dalí explored a form of expression where the boundaries between dream and reality dissolve. He crafted a persona of his own and pushed his visual language to the extreme, turning the world of dreams into a fertile space for artistic creation.

In this edition, crafted in matte black porcelain, the decoration gains a striking contrast thanks to

the old copper luster applied to the ornamental motifs of his clothing and to details as characteristic as his iconic mustache, crowned with two narcissus flowers. Another distinctive element is the lobster, modeled in white porcelain, a recurring symbol in his creative universe.

The narcissus flowers, handcrafted petal by petal, and the lobster are attached using a magnetic system. The lobster also features a clasp that allows it to be worn as a brooch.

The creation requires close to 20 days of work, from mold preparation to its final firing in the kiln.

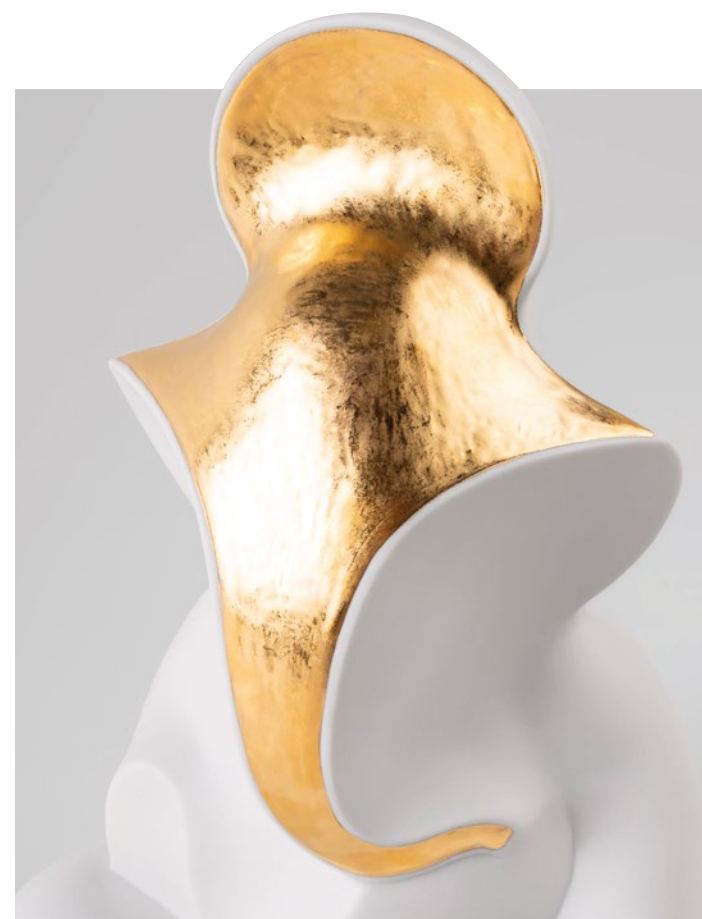






# LORD GANESHA

**LORD GANESHA  
— ETERNAL LIGHT**  
**01009804**  
26 x 18 x 14 cm  
10 ¼ x 7 x 5 ½"



Lord Ganesha is one of the most revered deities in Hinduism. He symbolizes wisdom, intelligence and new beginnings. In this creation, we reinterpret his image through abstraction, applying a refined approach to both form and decoration. We establish a dialogue with tradition from a current perspective, connecting spirituality and design.

According to Hindu tradition, Ganesha is the son of the goddess Parvati and the god Shiva. Legend has it that Parvati created him from clay to protect her while Shiva was away. When Shiva returned and found Ganesha blocking his way—unaware of who he was—he beheaded him in a fit of rage. Upon learning the truth, he brought him back to life by replacing his head with that of an elephant.

From that moment on, Ganesha was recognized by the gods as a special divinity, and Shiva granted him the honor of being invoked at the beginning of any ritual, journey, or new endeavor.

His appearance, with a large head symbolizing wisdom, a trunk that adapts to any situation and a calm body, represents the ability to overcome challenges with intelligence, patience, and balance. The use of matte white porcelain and the application of golden luster reflect the attributes of the deity and reinforce his symbolic character.

*Lord Ganesha – Eternal Light* goes beyond religion. It is a decorative piece that invites us to connect with spirituality and the beauty of its forms.



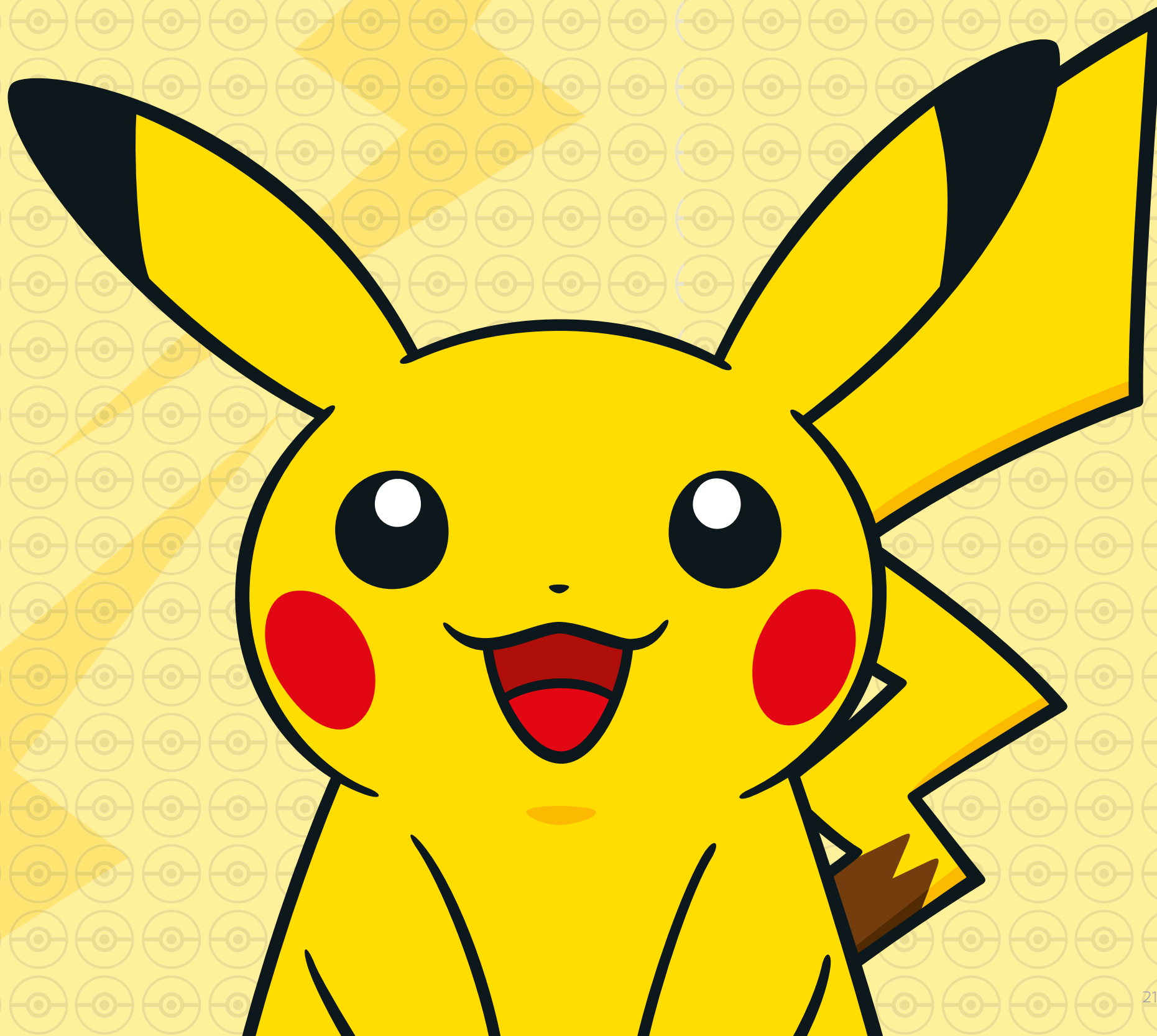


×

LLADRÓ

HANDMADE PORCELAIN  
SPAIN

PIKACHU  
COMING  
SOON





The portable *Ice Cream lamp*, inspired by the smooth, swirling shapes of ice cream, now arrives in a limited edition of only 150 units featuring a burgundy base and top lid. A special version that brings an exclusive character to the collection.

The piece retains the signature *Ice Cream* design, where matte white porcelain plays a central role. Thanks to the translucent quality of the porcelain, the light reveals the hand-engraved lines that run across

the surface, creating a warm and enveloping visual effect when the lamp is switched on.

On the front of the base, a gold-plated plaque with the Lladró flower logo functions as both a touch sensor and a dimmer, allowing the light to be adjusted with a simple tap.

This limited edition expands the *Ice Cream* palette and offers a contemporary, elegant and distinctive option for lighting different spaces.



#### SPECIAL PACKAGING



**ICE CREAM PORTABLE LAMP  
(BURGUNDY)**  
**01024474**  
25 x 17 x 17 cm  
9 3/4 x 6 3/4 x 6 3/4"  
Limited Edition of 150 units

# ICE CREAM

The *Dahlia* collection is composed of three candles presented in matte porcelain containers hand-engraved with organic motifs. Each candle contains 140 g of natural scented wax and is available in three colors, each paired with its own fragrance.

The *Dahlia* candles combine handcrafted design, hand-engraved porcelain and carefully developed fragrances to offer a complete sensory experience. Once the candle is finished, the containers can be reused as small decorative vessels.



**DAHLIA CANDLE (BLUE) –  
GARDENS OF VALENCIA**  
**01040322**  
6x9x9 cm  
2 1/4 x 3 1/2 x 3 1/2"

A fresh and luminous composition with citrus and fruity notes. Bergamot adds an invigorating touch, while tuberose introduces a soft sensuality balanced by warm hints of sandalwood and musk.

**DAHLIA CANDLE (GREEN) –  
ON THE PRAIRIE**  
**01040321**  
6x9x9 cm  
2 1/4 x 3 1/2 x 3 1/2"

A green, aromatic essence featuring bergamot, basil, thyme and vetiver. An olfactory journey that evokes a natural landscape filled with fresh herbs and wildflowers.

**DAHLIA CANDLE (PINK) –  
TROPICAL BLOSSOMS**  
**01040323**  
6x9x9 cm  
2 1/4 x 3 1/2 x 3 1/2"

A floral fragrance with Italian mandarin and frangipani, enriched with subtle tropical nuances of benzoin that add depth without losing its initial freshness.

# DAHLIA



The murmur of water in the fountain, the scent of flowers and spices, the light filtering through the latticework. The pieces in the *Majestic Nights* collection are suffused with the spirit of the Thousand and One Nights, the charm and mystery of an age-old culture, of refined, delicate, and magical art. The taste for geometric decoration and painstaking ornamentation is the source of inspiration for a collection conceived for celebrations around the table or to create a warm, welcoming atmosphere with its play of lights and scents.



# MAJESTIC NIGHTS



## PREMIERE TANAGRA

**INCENSE DIFFUSER (DARK BROWN)**  
01040315  
14 x 8 x 8 cm  
5 1/2 x 3 1/4 x 3 1/4"

**BOX WITH PLATES (BROWN)**  
01009670  
23 x 24 x 24 cm  
9 x 9 1/2 x 9 1/2"

**CANDLE - A SECRET ORIENT (BROWN)**  
01040316  
24 x 13 x 13 cm  
9 1/2 x 5 x 5"

**WIRELESS LAMP (BROWN)**  
01024462  
23 x 17 x 17 cm  
9 x 6 3/4 x 6 3/4"

*Majestic Nights* comprises a holder with four plates, a candle, an incense diffuser, and a cordless lamp. All the pieces are decorated with a signature latticework design, meticulously etched by hand by the brand's team of ornamentation artists.

A wide range of different tones of brown was chosen for the decoration, applied in the domes, all crowned by a crescent moon in golden luster.

In the candle and the cordless lamp, the translucency of porcelain allows light to filter through and highlight the patterns etched on their surface, creating a warm, magical effect.

The chosen aroma for the cones that contain the diffuser is a mix of incense and myrrh while the *Secret Orient* scent was chosen for the candle. The perfect fragrances to create an evocative and enveloping atmosphere.



# LOTUS FLOWER

This candle features a glass vessel topped with a glazed porcelain lid hand-engraved with a lotus flower, a symbol of purity, renewal and spiritual awakening. The candle contains 200 g of scented wax infused with the *Gardens of Valencia* fragrance.

This fresh and luminous composition blends citrus and fruity notes. The invigorating touch of bergamot and the soft sensuality of tuberose come together with warm hints of sandalwood and musk.

The *Lotus Flower Candle* is part of the *Spirit of India* collection, which brings together creations inspired by the richness of Hinduism, its deities, celebrations, and traditions.

A creation designed to accompany moments of calm, reflection, and inner well-being.

LOTUS FLOWER CANDLE -  
GARDENS OF VALENCIA  
01040324  
12 x 8 x 8 cm  
4 3/4 x 3 1/4 x 3 1/4"

## Photography

Lladró

Paloma Pacheco @palomapachecoturnes

## Many thanks to

Sigfrido Serra @sigfridoserra.estudio

Arenaa @arenaa\_home\_

Teulat @teulatdesign



LLADRÓ - VALENCIA, SPAIN  
(+34) 963 187 000  
(+34) 900 211 010 (TOLL FREE)  
customer-services@es.lladro.com  
www.lladro.com

Lladró is the success story of an iconic Spanish brand. A world leader in the design, manufacturing and distribution of porcelain art creations. Lladró is a unique mix of talent, audacity and meticulousness in the quest for excellence.

From chemistry to modeling, as well as carving, etching, painting... a team of expert artists and designers keeps alive the ancient crafts and methods of turning porcelain into dreams. Unique craft processes that are applied in the most figurative Lladró as well as in lighting products, home accessories and jewelry. **The degree of craftsmanship is so high that no two pieces are exactly alike, which means that there may be differences between creations from the same series. That's why Lladró creations are unique and unrepeatabe.** Works that invite us to relax and enjoy moments of intimacy, further enhanced by the exclusive and distinguishing touch of handcrafted porcelain.

The pictures of the pieces may vary slightly from the original models.



WHERE PORCELAIN BECOMES ART



01086302