

LLADRÓ



HERITAGE

HANDMADE PORCELAIN

SPRING 2026

HERITAGE



LIFE IN PORCELAIN

In these pages, life finds expression through porcelain in creations inspired by culture, traditions, emotions, and the natural world. Each one reflects the technical mastery and artistic vision that define our craft.

This creative path reaches its highest level in High Porcelain, where we explore more demanding compositions, meticulously crafted decorations, and a level of detail that speaks to the excellence of our workmanship. These works are conceived to push the technique to its limit, transforming every gesture into an artistic expression that transcends time.



SHOGUN 2

LORD VENKATESWARA 4

FREEDOM EAGLE 6

LORD GANESHA 8

REFLECTIONS OF NATURE 10

DANCING IN THE WIND 12
Annual Piece

ANGEL WITH FLOWER 14

DALÍ 16

STAR WARS 18

IKEBANA FLOWER 22

ICE CREAM 24

LOTUS FLOWER 25

DAHLIA 26

MAJESTIC NIGHTS 28

HOLIDAYS 30



Silence speaks, it is the pause before movement, the calm that comes before action. From that idea comes this creation inspired by the ancient shōgun, supreme commanders of the army in feudal Japan and the highest rank a samurai could achieve. This piece is a fragment of history that captures the essence of Bushidō, the ethical and moral code that guided their lives and emphasized self-mastery.

Shogun is handcrafted in matte black porcelain and symbolizes the restrained strength and inner discipline of the Japanese warrior. Standing 68 cm tall, the black porcelain evokes both darkness and the cold steel of the samurai armor, a sophisticated finish that absorbs light and enhances form.

SHOGUN

Every line of his attire has been hand-engraved by expert artisans, capturing the complex texture of the kimono and the tension of his muscles. The dragon etched into the garment, the geometric patterns along the edges, and the sword hilts are finished with a subtle gleam of gold and copper luster. These metallic touches add visual richness

and contrast. True to tradition, the warrior carries his daishō (the pair of samurai swords, katana and wakizashi), a symbol of his status and his warrior's soul.

Shogun is a reflection on mastery. A creation that, in times of noise, reminds us of the importance of cultivating serenity and inner strength.

SHOGUN
01009807
68 x 34 x 37 cm
26 3/4 x 13 1/2 x 14 1/2"





A PROTECTIVE PRESENCE

Also known as Balaji, Venkateswara descends in times of uncertainty to offer guidance and hope. His four arms express his divine nature and the ability to sustain mind, consciousness, intellect and ego in equilibrium. The discus symbolizes the clarity that cuts through ignorance. The conch evokes the primordial sound that accompanies and protects. This creation captures the serenity that, according to tradition, never leaves those who seek refuge.

SYMBOLIC RICHNESS

The sacred mark on his forehead, the ritual position of his hands and his ornate adornments form a visual language deeply rooted in the devotion of Tirumala. Every detail invites a slow, thoughtful reading where tradition and a contemporary lens coexist with ease.

BLACK PORCELAIN AND METALLIC ACCENTS

Crafted in black porcelain, this Venkateswara gains a commanding presence that contrasts with the silver and platinum lusters applied to the sword and other decorative elements. Green and blue gemstones, the red Tilak on the headdress and the white porcelain beads with satin finishes complete a palette that brings elegance and solemnity to the piece.

PRECISE CRAFTSMANSHIP

Modeled with great attention to detail and finished through multiple decorative stages, its creation blends technique and sensitivity. The result invites the eye to pause and move gradually across the piece, open to the sense of calm and protection embodied by Venkateswara.

LORD VENKATESWARA

LORD VENKATESWARA
01009811
42 x 24 x 12 cm
16 1/2 x 9 1/2 x 4 3/4"



The endless diversity of wildlife inspires this creation dedicated to the eagle, a universal symbol of power and freedom. Our artists capture its presence through precise modeling that highlights the wingspan and the poised stance on the branch.

In this edition, the piece is crafted entirely in porcelain and finished with gold luster, an effect that enhances every feather detail and turns light into an essential part of the composition.

Its production requires 17 days, from the extraction of the mold fragments to the final firing in the kiln. The result is a creation that celebrates the strength and beauty of this queen of the skies.



FREEDOM EAGLE (GOLD)
01009819
 48 x 57 x 28 cm
 19 x 22 1/2 x 11"
 Limited Edition of 250 units

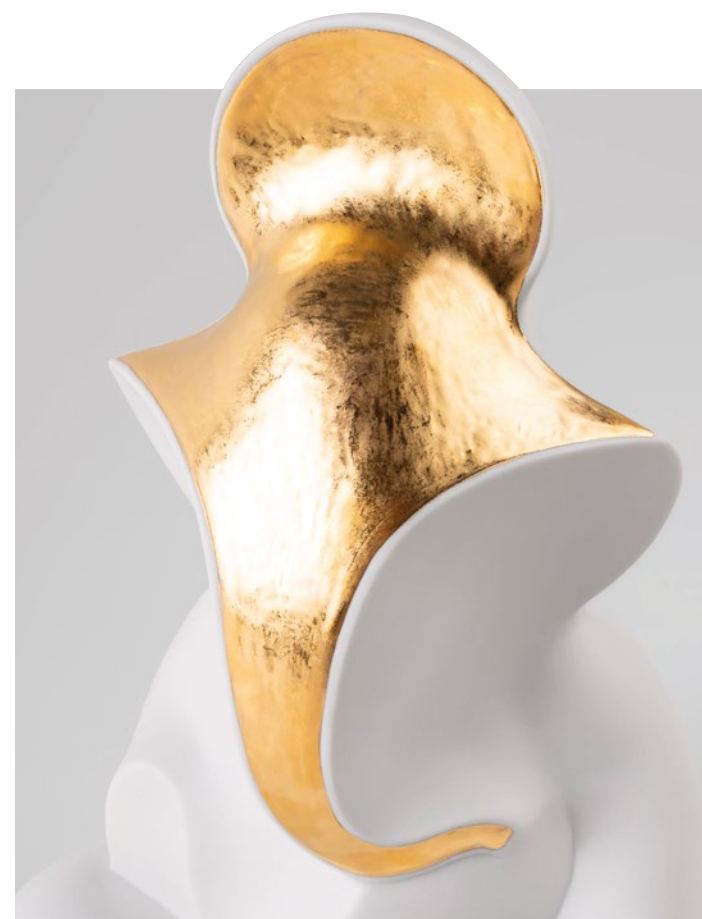
FREEDOM EAGLE





LORD GANESHA

LORD GANESHA
— ETERNAL LIGHT
01009804
 26 x 18 x 14 cm
 10 1/4 x 7 x 5 1/2"



Lord Ganesha is one of the most revered deities in Hinduism. He symbolizes wisdom, intelligence and new beginnings. In this creation, we reinterpret his image through abstraction, applying a refined approach to both form and decoration. We establish a dialogue with tradition from a current perspective, connecting spirituality and design.

According to Hindu tradition, Ganesha is the son of the goddess Parvati and the god Shiva. Legend has it that Parvati created him from clay to protect her while Shiva was away. When Shiva returned and found Ganesha blocking his way—unaware of who he was—he beheaded him in a fit of rage. Upon learning the truth, he brought him back to life by replacing his head with that of an elephant.

From that moment on, Ganesha was recognized by the gods as a special divinity, and Shiva granted him the honor of being invoked at the beginning of any ritual, journey, or new endeavor.

His appearance, with a large head symbolizing wisdom, a trunk that adapts to any situation and a calm body, represents the ability to overcome challenges with intelligence, patience, and balance. The use of matte white porcelain and the application of golden luster reflect the attributes of the deity and reinforce his symbolic character.

Lord Ganesha – Eternal Light goes beyond religion. It is a decorative piece that invites us to connect with spirituality and the beauty of its forms.



REFLECTIONS OF NATURE – HER
(WHITE-GOLD)
01009810
55 x 23 x 28 cm
21 3/4 x 9 x 11"

REFLECTIONS OF NATURE – HIM
(WHITE-GOLD)
01009809
51 x 29 x 26 cm
20 x 11 1/2 x 10 1/4"

REFLECTIONS OF NATURE

Reflections of Nature is composed of two busts, one male and one female, each captured in a reflective, introspective attitude. Their torsos, suspended above a cylindrical base, appear to float gently in the air.

In this edition, crafted in matte white porcelain, the gold luster decoration takes on a central role. The leaves that trace their faces and arms unfold like a luminous stroke, a subtle presence that recalls the way light filters through foliage and casts shifting shapes across the skin.

The modeling stands out for its clean, precise volumes, and for the organic lines along the arms and neck that echo the irregular texture of a tree trunk. A detail that reinforces the connection between the human body and the natural world.

Together, the two pieces invite a pause to reflect on the essential relationship between people and their surroundings. A reminder that we inhabit the same landscape and that every gesture, every action, forms part of an ongoing dialogue with what surrounds us.





The Annual Piece for 2026 is born from a simple gesture that becomes a moment suspended in time. A woman lets herself be carried by the breeze, as if listening to the rhythm of the wind around her. Her soft mauve dress, wide and flowing, follows that natural movement and fills the scene with a sense of ease and visual lightness.

Crafted in glazed porcelain, the piece stands out for the drape of the

dress, filled with subtle nuances and folds that catch the light from every angle. On her chest, she wears a handmade white carnation crafted in matte porcelain.

This creation requires 14 days of artisan work, a process in which every detail is carefully refined. *Dancing in the Wind* invites us to pause and appreciate that fleeting instant where everything moves naturally, now transformed into porcelain.

Annual Piece DANCING IN THE WIND

2026 ANNUAL PIECE
DANCING IN THE WIND
01009806
33 x 26 x 19 cm
13 x 10 1/4 x 7 1/2"



ANGEL WITH FLOWER

Angel with flower portrays an angel in a moment of stillness, focused on the delicate blossom he holds in his hands. His silhouette, crafted in satin white porcelain, conveys a sense of calm.

The flower, made of six individually shaped petals assembled with precision, adds the only touch of color to the composition and highlights the artisanal skill behind the piece.

The design and modeling phase of this creation required more than 20 days, a meticulous effort that leads into the complex technical, ornamental, and decorative process before reaching the hands of the porcelain artisans. The result is a piece that invites us to pause and appreciate the details and the quiet beauty of simple moments.



ANGEL WITH FLOWER
01009789
20 x 11 x 14 cm
7 3/4 x 4 1/4 x 5 1/2"





DALÍ & SURREALISM



DALÍ & SURREALISM
01009812
 42 x 29 x 23 cm
 16 1/2 x 11 1/2 x 9"
 Limited Edition of 250 units

Dalí, one of the most singular and widely recognized artists of the 20th century, is portrayed in this creation that captures his unmistakable personality. A tribute to one of the most influential cultural figures of our time.

Considered one of the leading representatives of Surrealism, Dalí explored a form of expression where the boundaries between dream and reality dissolve. He crafted a persona of his own and pushed his visual language to the extreme, turning the world of dreams into a fertile space for artistic creation.

In this edition, crafted in matte black porcelain, the decoration gains a striking



contrast thanks to the old copper luster applied to the ornamental motifs of his clothing and to details as characteristic as his iconic mustache, crowned with two narcissus flowers. Another distinctive element is the lobster, modeled in white porcelain, a recurring symbol in his creative universe.

The narcissus flowers, handcrafted petal by petal, and the lobster are attached using a magnetic system. The lobster also features a clasp that allows it to be worn as a brooch.

The creation requires close to 20 days of work, from mold preparation to its final firing in the kiln.



C3PO™ first appeared in 1977 with the release of *Star Wars™: A New Hope*, becoming one of the saga's most recognizable characters from the very beginning. Created by Anakin Skywalker and programmed to master more than six million forms of communication, this protocol droid has been part of the galactic story since its origins, moving between diplomacy, constant worry, and an unintentionally humorous tone that made it unforgettable.

This porcelain version stays true to his iconic golden silhouette. The metallic plates along his body, the circular details on his torso, and the central section with exposed cables are rendered with a clean and precise finish. His slightly raised hand evokes those familiar moments when C3PO tries to stop a situation before it spirals out of control.

The design preserves the traits that made the character famous and brings them into the world of *Star Wars™* icons crafted in porcelain.

C3PO™



**STAR
WARS™**

LLADRÓ
HANDMADE PORCELAIN
SPAIN



C3PO™
01009803
34 x 16 x 14 cm
13 1/2 x 6 1/4 x 5 1/2"



DARTH VADER™ HELMET



The Darth Vader™ helmet, an unmistakable icon from the cinematic universe of the *Star Wars*™ saga, is reinterpreted in porcelain through a detailed technical and decorative process that highlights the character and his singular aesthetic. Crafted in glazed black porcelain, the piece emphasizes the angular lines and striking geometry of the original design.

Standout features include the side hinges and nose section, finished with silver luster to enhance contrast, and remain faithful to the original. The matte black grille, along with the eyes painted with pearl luster over black to create a mirrored effect, intensify the character's enigmatic and instantly recognizable expression. The piece is mounted on a metal base with stand, enhancing its display value and making it ideal for interior spaces.

This creation is part of a limited edition of 1,500 units, making it a highly valuable collectible for *Star Wars*™ enthusiasts and lovers of contemporary design alike. A porcelain artwork that merges design, technical precision, and cinematic culture.

DARTH VADER™ HELMET
01009764
 33 x 27 x 28 cm
 13 x 10 3/4 x 11"
 Limited Edition of 1,500 units

**STAR
WARS**

LLADRÓ
 HANDMADE PORCELAIN
 SPAIN



GIO PONTI

HOMES FOR OUR TIME

© & ™ Lucasfilm Ltd.

HERITAGE



IKEBANA FLOWER
01040320
8 x 11 x 11 cm
3 1/4 x 4 1/4 x 4 1/4"

Inspired by the Japanese art of Ikebana, this porcelain creation reinterprets the delicacy and balance of nature. Each petal and pistil, handcrafted one by one with precision, shape a flower that reflects attention to detail and craftsmanship.

IKEBANA FLOWER



The base of this piece is made from an olfactory porcelain that acts as a natural aroma diffuser. Simply add a few drops of your favorite fragrance to its surface to subtly scent the space.

The portable *Ice Cream lamp*, inspired by the smooth, swirling shapes of ice cream, now arrives in a limited edition of only 150 units featuring a burgundy base and top lid. A special version that brings an exclusive character to the collection.

The piece retains the signature *Ice Cream* design, where matte white porcelain plays a central role. Thanks to the translucent quality of the porcelain, the light reveals the hand-engraved lines that run across the surface, creating a warm and

enveloping visual effect when the lamp is switched on.

On the front of the base, a gold-plated plaque with the Lladró flower logo functions as both a touch sensor and a dimmer, allowing the light to be adjusted with a simple tap.

This limited edition expands the *Ice Cream* palette and offers a contemporary, elegant and distinctive option for lighting different spaces.

**ICE CREAM PORTABLE LAMP
(BURGUNDY)**
01024474
25 x 17 x 17 cm
9 3/4 x 6 3/4 x 6 3/4"
Limited Edition of 150 units

SPECIAL PACKAGING



ICE CREAM



LOTUS FLOWER

This candle features a glass vessel topped with a glazed porcelain lid hand-engraved with a lotus flower, a symbol of purity, renewal and spiritual awakening. The candle contains 200 g of scented wax infused with the *Gardens of Valencia* fragrance.

This fresh and luminous composition blends citrus and fruity notes. The invigorating touch of bergamot and the soft sensuality of tuberose come together with warm hints of sandalwood and musk.

The *Lotus Flower Candle* is part of the *Spirit of India* collection, which brings together creations inspired by the richness of Hinduism, its deities, celebrations, and traditions.

A creation designed to accompany moments of calm, reflection, and inner well-being.

**LOTUS FLOWER CANDLE -
GARDENS OF VALENCIA**
01040324
12 x 8 x 8 cm
4 3/4 x 3 1/4 x 3 1/4"





**DAHLIA CANDLE (BLUE) –
GARDENS OF VALENCIA**
01040322
6x9x9 cm
2 1/4 x 3 1/2 x 3 1/2"

A fresh and luminous composition with citrus and fruity notes. Bergamot adds an invigorating touch, while tuberose introduces a soft sensuality balanced by warm hints of sandalwood and musk.



**DAHLIA CANDLE (GREEN) –
ON THE PRAIRIE**
01040321
6x9x9 cm
2 1/4 x 3 1/2 x 3 1/2"

A green, aromatic essence featuring bergamot, basil, thyme and vetiver. An olfactory journey that evokes a natural landscape filled with fresh herbs and wildflowers.



**DAHLIA CANDLE (PINK) –
TROPICAL BLOSSOMS**
01040323
6x9x9 cm
2 1/4 x 3 1/2 x 3 1/2"

A floral fragrance with Italian mandarin and frangipani, enriched with subtle tropical nuances of benzoin that add depth without losing its initial freshness.

The *Dahlia* collection is composed of three candles presented in matte porcelain containers hand-engraved with organic motifs. Each candle contains 140 g of natural scented wax and is available in three colors, each paired with its own fragrance.

The *Dahlia* candles combine handcrafted design, hand-engraved porcelain and carefully developed fragrances to offer a complete sensory experience. Once the candle is finished, the containers can be reused as small decorative vessels.

DAHLIA



The murmur of water in the fountain, the scent of flowers and spices, the light filtering through the latticework. The pieces in the *Majestic Nights* collection are suffused with the spirit of the Thousand and One Nights, the charm and mystery of an age-old culture, of refined, delicate, and magical art. The taste for geometric decoration and painstaking ornamentation is the source of inspiration for a collection conceived for celebrations around the table or to create a warm, welcoming atmosphere with its play of lights and scents.



MAJESTIC NIGHTS



PREMIERE TANAGRA

INCENSE DIFFUSER (DARK BROWN)
01040315
14 x 8 x 8 cm
5 1/2 x 3 1/4 x 3 1/4"

BOX WITH PLATES (BROWN)
01009670
23 x 24 x 24 cm
9 x 9 1/2 x 9 1/2"

CANDLE - A SECRET ORIENT (BROWN)
01040316
24 x 13 x 13 cm
9 1/2 x 5 x 5"

WIRELESS LAMP (BROWN)
01024462
23 x 17 x 17 cm
9 x 6 3/4 x 6 3/4"

Majestic Nights comprises a holder with four plates, a candle, an incense diffuser, and a cordless lamp. All the pieces are decorated with a signature latticework design, meticulously etched by hand by the brand's team of ornamentation artists.

A wide range of different tones of brown was chosen for the decoration, applied in the domes, all crowned by a crescent moon in golden luster.

In the candle and the cordless lamp, the translucency of porcelain allows light to filter through and highlight the patterns etched on their surface, creating a warm, magical effect.

The chosen aroma for the cones that contain the diffuser is a mix of incense and myrrh while the *Secret Orient* scent was chosen for the candle. The perfect fragrances to create an evocative and enveloping atmosphere.

HOLIDAYS

2026 CHRISTMAS BELL
01018488
 9 x 8 x 8 cm
 3 1/2 x 3 1/4 x 3 1/4"
 Limited Edition of 5,000 units

2026 CHRISTMAS BALL
01018489
 10 x 9 x 9 cm
 4 x 3 1/2 x 3 1/2"
 Limited Edition of 4,000 units

Special packaging
 2026 Limited Edition

There are celebrations that are prepared slowly, long before they arrive. The limited-edition *Christmas ball* and *bell* are part of those small rituals that make the season feel truly special.

Both creations are handcrafted in porcelain and decorated with reliefs of two little birds and holly branches, a plant traditionally associated with Christmas and a symbol of hope and renewal. Each piece features the 2026 inscription, highlighted in a soft pastel tone, and is finished with a blue ribbon for easy hanging.

Presented in a special box, these two creations are designed to accompany the season and return each December to decorate the home.



Photography

Lladró

Paloma Pacheco @palomapachecoturnes

Many thanks to

Sigfrido Serra @sigfridoserra.estudio

Arenaa @arenaa_home_

Teulat @teulatdesign



LLADRÓ - VALENCIA, SPAIN
 (+34) 963 187 000
 (+34) 900 211 010 (TOLL FREE)
 customer-services@es.lladro.com
 www.lladro.com

Lladró is the success story of an iconic Spanish brand. A world leader in the design, manufacturing and distribution of porcelain art creations. Lladró is a unique mix of talent, audacity and meticulousness in the quest for excellence.

From chemistry to modeling, as well as carving, etching, painting... a team of expert artists and designers keeps alive the ancient crafts and methods of turning porcelain into dreams. Unique craft processes that are applied in the most figurative Lladró as well as in lighting products, home accessories and jewelry. **The degree of craftsmanship is so high that no two pieces are exactly alike, which means that there may be differences between creations from the same series. That's why Lladró creations are unique and unrepeatable.** Works that invite us to relax and enjoy moments of intimacy, further enhanced by the exclusive and distinguishing touch of handcrafted porcelain.

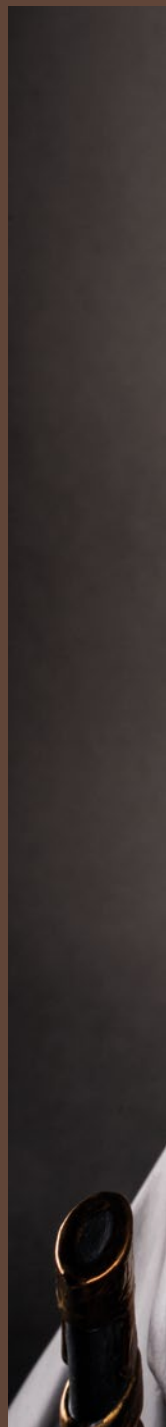
The pictures of the pieces may vary slightly from the original models.

WHERE PORCELAIN BECOMES ART



LLADRÓ

HANDMADE PORCELAIN
Spain



01086301