

GHIDINI
1961
GHIDINI



2024
Collection

GHIDINI 1961 INIZIANDO

2024 Collection

10_ **Tasca**_sofas and armchair

16_ **Flo**_sofas and armchair

26_ **Mambo**_modular sofa and armchair

32_ **Tria**_tables-small tables

40_ **Spritz**_small armchairs

42_ **Artù**_tables

48_ **Arch**_dining chair

50_ **Merlino**_tables

54_ **Hillary**_dining chair

56_ **Shaker**_console

57_ **Frame**_console

58_ **Arnold**_small tables

60_ **Dapertutto**_small tables

62_ **Helios**_lamps

64_ **Buttefly**_mirror

The Company

Ghidini1961 of Villa Carcina, in the province of Brescia, belongs to Italy's manufacturing excellence, thanks to their unparalleled production skills.

A specialist in die casting brass, aluminum and steel, the company excels in combining advanced technologies with traditional craft skills. With these solid foundations, the creative team composed by international designers has been able to enhance the properties of metals by creating innovative, timeless products chiseled with all the care for every detail that is distinctive of Ghidini's fine craftsmanship.

In this catalogue, you will come across products destined to become iconic, to erase the boundary between art and design and to establish with the public a communion of intentions and views such as to translate into a loyal and lasting relationship, just like artistic artefacts. A demonstration of how the reliability and quality of a brand can become a warranty of an investment capable of acquiring value over time.



The craft

The entire production cycle takes place in-house and is characterized by a meticulous attention to detail: from the idea to the end product, passing through the various processing stages – from pressure die casting to lost wax and gravity casting, from machining to drilling, from satin-finishing to sand-blasting and polishing. These are the solid foundations of Ghidini1961.

With over 60 years of history behind it, and an entrepreneurial wisdom that has been handed down from father to son, Ghidini1961 presents furnishings, lamps and home accessories that are true testimonies of great Italian craftsmanship combined with state of the art production technologies, care for materials, aesthetics and attention to detail.

With this foundation, our products are not just meant to decorate a refined environment, but they represent something valuable,

to be cared of, that can be passed over through generations thanks to its intrinsic and long lasting value blended with iconic and timeless design.



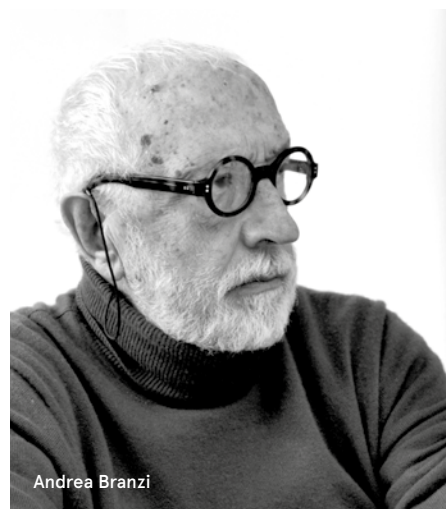
The products

The collection includes works of art, where metal acquires an almost sculptural power, upholstered furniture, dining tables, beds, cabinets and finely chiseled home accessories, bearing witness to Ghidini's obsession for details.

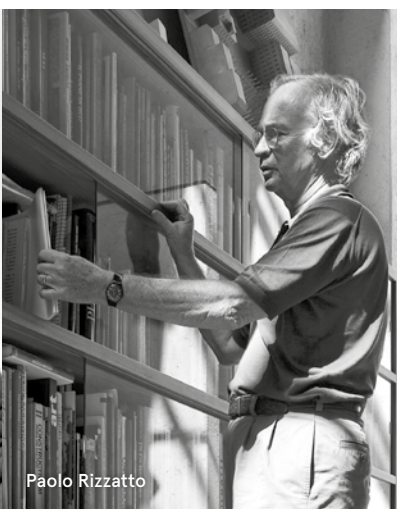
The series embrace almost all articles for use at home, which are interpreted in an unusual and joyful way: from comfy and versatile sectional sofas, to very seductive, almost sculptural upholstered design statements, such as the Abbracci sofa, conceived Lorenza Bozzoli or Stefano Giovannoni's Frame collection, where geometric shapes are softened by the velvety surface of metal to create a sleek collection of sofas, armchairs, dining tables, cabinets, bookshelves and beds.

Casted metal elements have given life also to a series of other iconic products, such as the Shaker sofa and table, with the casted wheel that defines the language, to the brass and leather buckle of the Leisure sofa and armchair.

In its rich variety, the collection is a selection of the most significant contemporary creative expressions, interpreted and enhanced by Ghidini's skillful expertise and ability to interpret metal in all its possible forms.



Andrea Branzi



Paolo Rizzatto



Stefano Giovannoni



Lorenza Bozzoli



Robert Stadler



Alessandro Mendini



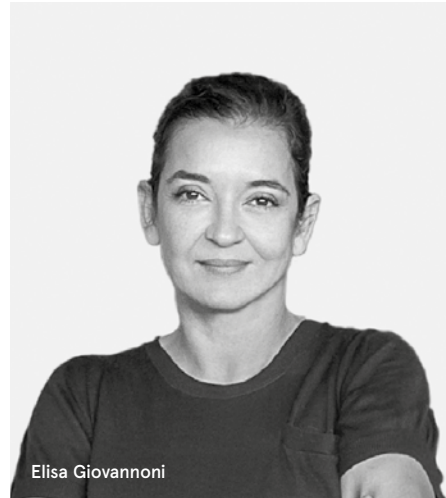
Aldo Cibic



Richard Hutten



Campana Brothers



Elisa Giovannoni



Johanna Grawunder



Branch Creative



Noé Duchaufour-Lawrance



Setsu & Shinobu Ito



Tomek Rygalik



Studio Job



Nika Zupanc

The designers

The brand has put together a diversified creative team able to enhance the properties of metals, in a constant dialogue with precious leathers, fabrics, marbles and woods.

By combining these valuable materials the team has developed a remarkable collection of items, furniture and accessories for daily use. All these products are characterized by innovative design and high quality manufacturing, creating an exclusive mood coherent with the nature and the best tradition of Ghidini1961.

The collection has been designed by renowned international firms such as Aldo Cibic, Alessandro Mendini, Andrea Branzi, Branch Creative, Fernando and Humberto Campana, Noé Duchaufour-Lawrance, Setsu & Shinobu Ito, Johanna Grawunder, Richard Hutten, Elisa Giovannoni, Stefano Giovannoni, Paolo Rizzatto, Tomek Rygalik, Studio Job and Nika Zupanc. The collection ranges from large furniture statements to tiny golden accents that decorate and give warmth to stylish residential environments.

Tasca

— Sofas and armchair

Robert Stadler

The name Tasca refers to the cushion's elegant leather pockets in which the sofa structure is housed. Both the pockets and the metal parts are reminiscent of distinct equestrian accessories.







Flo

— Sofas and armchair

Lorenza Bozzoli

The Flo series pays homage to mid-20th century Brazilian design, emphasizing high quality materials and comfort such as the use of leather straps to support the seat and backrest. The thick natural leather armchair, padded with goose down, suggests a fusion of luxury, craftsmanship and design.







The back view of the Flo family of seaters emphasizes the dialogue between precious materials, such as casted aluminum, cotton velvet and saddle leather. Customization is once again at the center of the project, thanks to the almost endless combinations between these materials.

The two and four seater sofas are both made with a significant metal structure, typical of the craftsmanship of Ghidini1961. The black cotton velvet provides a strong and distinctive character suitable for both modern and traditional environments. A reinterpretation that fully embraces the principles of contemporary design. The soft armrest suggests an informal interaction with this sofa, reminding that comfort is always a core design element.





Mambo__Modular sofa

Lorenza Bozzoli

This modular sofa is not simply a piece of furniture but a celebration of the movement, fluidity and expressiveness of the famous Caribbean dance. The sinuous shape allows the sofa to unfold in the space in an elegant way, evoking the graceful and lively movements of mambo dancers.





Each module of the sofa is composed in harmony with the others in a dance that invites you to sit down and let yourself be lulled by its comfort. The color of the chosen velvet recalls the energy and fertility of the tropical land, its generous curls the costumes of Creole dancers.



The Mambo family is completed with a generous and comfy armchair, which shares the same distinctive elements of the large sofa.

The folds and curves of the seat and backrest recall to a convivial language, which blends seamlessly with the large dimensions of the modular sofa.



Tria

_Tables/Small tables

Lorenza Bozzoli

Dining table with irregularly shaped top, inspired by the section of a river stone, evokes the fluidity and harmony of nature making it a prominent element in any environment.





Selected for its exceptional quality and color, Portuguese pink marble is renowned for its delicate veins that run across the surface, with nuances that make it unique. The top is supported by zoomorphic sculptured bases made of the same material.



The Tria series also includes coffee tables with triangular tops of three different sizes and heights for numerous compositional possibilities accentuated by the availability of being combined with a wide choice of marbles.





The generous supporting leg of the table allows this family to be offered with sizes up to 280cm. Instead, the coffee tables are offered in three different sizes and heights, allowing very beautiful combinations between different marbles and shapes.



Spritz__small armchairs

Lorenza Bozzoli

Made up of dining and living armchairs, the Spritz seating family evokes the sparkling world of aperitifs. The 360° swivel movement adds a playful and dynamic element to the armchair, making it perfect for informal environments where conversation and interaction are at the center of the experience. In the dining version, the swivel movement with return allows the seats to return to their always tidy position around the table.



Artù Tables

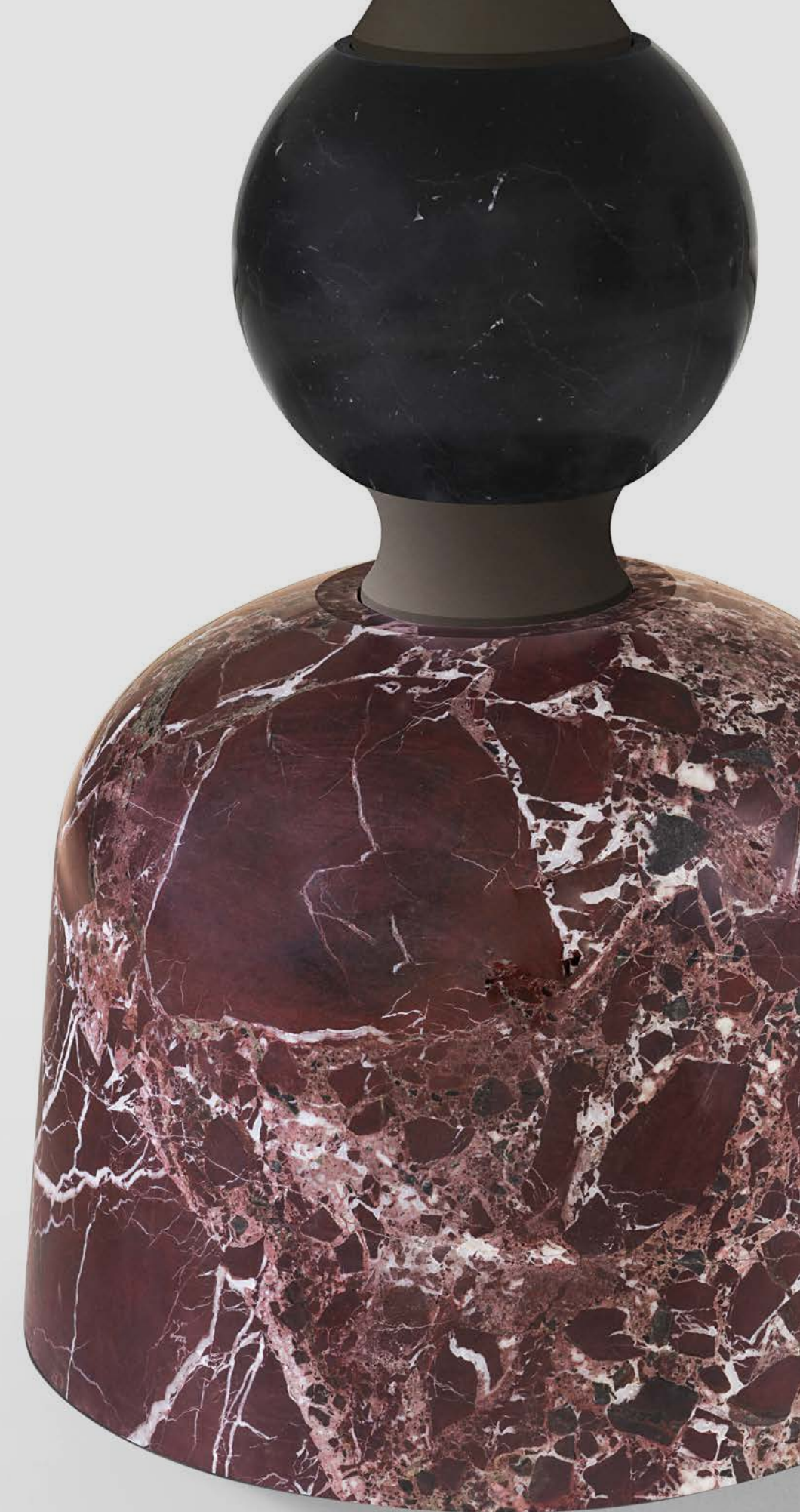
Paolo Rizzato

The large circular top is well supported by a solid base formed by a series of overlapping concave and convex rotation volumes alternating the metal (brushed burnished metal scots) and stone (grooves and spheres in precious colored marbles).





The whole communicates a feeling of well-constructed stability and security and of noble architectural richness. The circle evokes the legend of the "Knights of the Round Table", and "King Arthur", stone and metal recall the "Sword in the Stone" back to Excalibur.





Thanks to the strength and visual presence of the supporting leg, the Artù is presented also in a rectangular and oval configurations. The rectangles are ranging from 200 up to 280cm, and the ovals go up to 200cm in length on a single leg.



Arch_Dining chair

Richard Hutten

The Arch chair draws inspiration from the iconic arches of Rome's Colosseum. Its graceful contours and enduring elegance seamlessly marry contemporary style with timeless craftsmanship. Embracing the materiality, the external frame exudes a sense of celebration, while the gentle curves of the backrest promise endless comfort during long evenings. This chair effortlessly infuses richness and sophistication into any space, seamlessly adapting to diverse environments with its versatile charm.

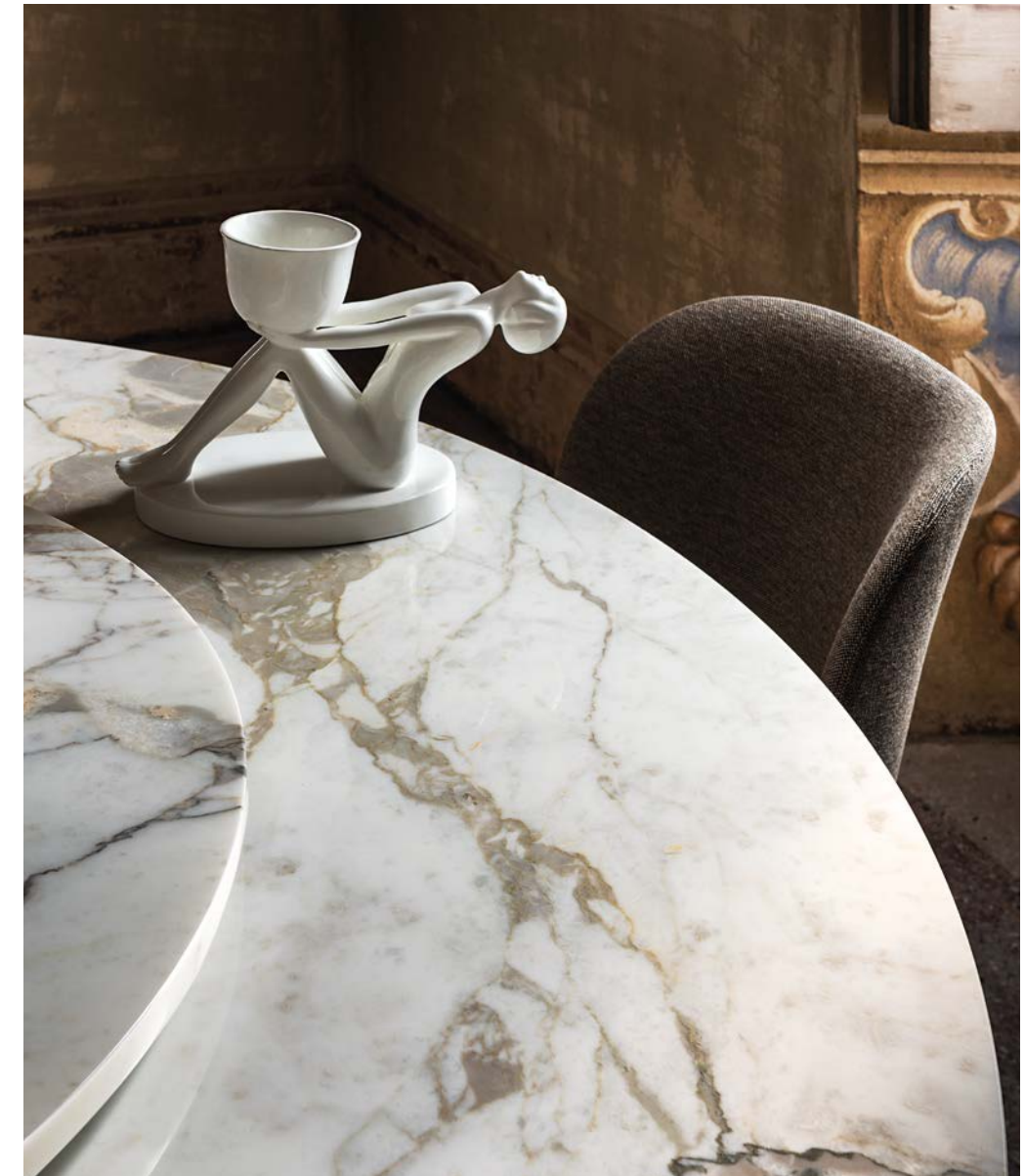


Merlino__Tables

Paolo Rizzato

The marble top instead seems to float supported by an unusual structure surprisingly rich and light, airy and iridescent as the points of view change. The linear and curvilinear shapes in burnished and brushed metal that compose it they refer to organic vegetal forms and when reflected in a mirrored surface they multiply and they seem to mysteriously sink in the floor plane.





Hillary

_Dining chair

Richard Hutten

The Hillary chair, named after the butler of Lara Croft in Tomb Raider, serves you in a very elegant way. The generous proportions of the backrest gives the chair its presence, while at the same time providing high comfort, like a tailor made jacket. With its sleek design, impeccable craftsmanship, and innovative features, it infuses sophistication and opulence into any space. Through a shared dedication to quality, this extraordinary furniture piece emerges as a timeless masterpiece.



Shaker__Console

Stefano Giovannoni

Family of consoles in different sizes, a classic object wisely redesigned to bring it back to a contemporary dimension. The elegant metal wheel that characterizes the sofa is proposed here as the end of the sinuous turned legs, allowing the console to be moved. The Shaker console is made of cherry wood or matt black lacquered wood.



Frame__Console

Stefano Giovannoni

Frame is a collection composed of sofas, armchairs, dining tables, consoles and coffee tables, bookshelves, cabinets and beds. Everything starts from a simple element: "the joint", which, combined with elegant rounded 45 degrees extrusions, creates an almost infinite family.



Arnold__Small tables

Paolo Rizzato

Three geometric shapes (a Line, a Plan, a Volume) and three materials (Metal, Wood, Marble) exploiting the artifice and techniques of "tapering" take the form of: a solid tapered column (in two heights) completed with connections at the base and at the head providing a comfortable support surface characterized by a thin rounded edge and a stable truncated cone base. The several combinations of the three geometries and

the three materials are enriched by some dimensional variations and, with the study and fine-tuning of their overall proportions, take their definitive and complete form where the elegant brass column, which draws and solves the connection and attachment between the top and the base, becomes the distinctive element of the project without taking over the other elements that take part in the compositional game.



Dapertutto

__Small tables

Paolo Rizzato

"Dapertutto" is a disturbing character, part magician and part devil from "The Tales of Hoffmann", Offenbach's opera fantastique. "Dapertutto" could be the perfect name for this side table designed to sneak "everywhere", in every environment with its form that is both archetypal (think of the Diablo game) and very contemporary (reminiscing black holes), but still ambiguous and reversible.



Helios_Lamps

Branch Creative

With this year collection we present an evolution of the Helios family of lights: the lamps are presented with new handmade finishes in polished silver and black finishes. The iconic blown glass lampshade now fully hides the lighting source when switched off.



Butterfly_Mirror

Richard Hutten

Butterflies have been a source of inspiration through Art History. From the ancient Egypt's, to the Renaissance until now it has always been a theme. The Butterfly mirror is both playful and elegant.



68_Materials collection
92_Technical specifications

Metal finishes

All our finishes are handmade, and all surfaces are lacquered to provide a long lasting durability



Polished brass PB - Cat. A



Chrome CH - Cat. A



Satin Platinum SP - Cat. B



Orbital Bronze OB - Cat. B



Satin brass SB - Cat. B



Light burnished brass LB - Cat. B



Satin Titanium ST - Cat. B



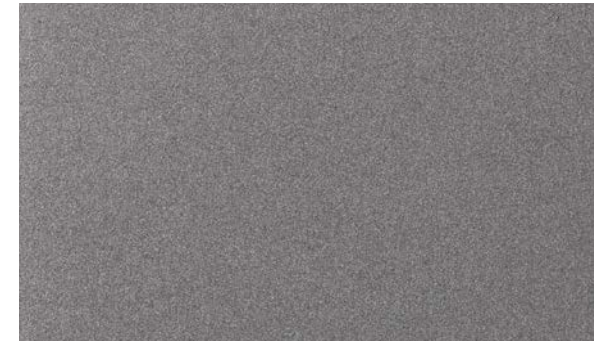
Brushed Copper BC - Cat. B



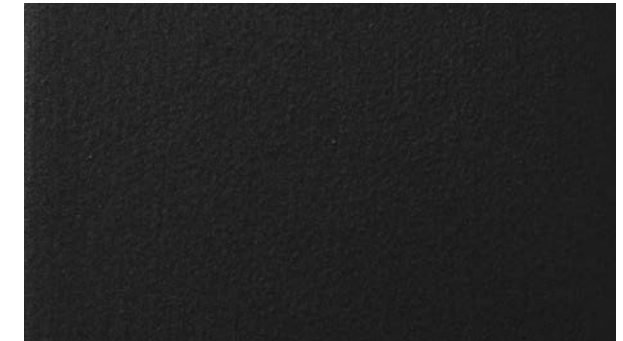
Dark burnished brass DB - Cat. B



Black Gold BG - Cat. B



Deep Anthracite DA - Cat. C



Deep Dark DD - Cat. C



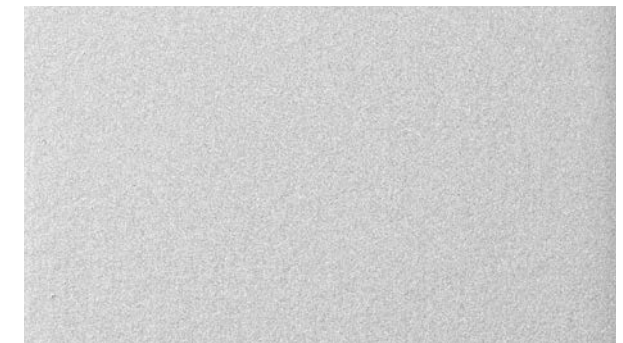
Brown burnished brass BB - Cat. B



Brushed Silver BS - Cat. B



Deep Gold DG - Cat. C



Deep Silver DS - Cat. C

Marbles Collection



Calacatta Gold CG - Cat. A



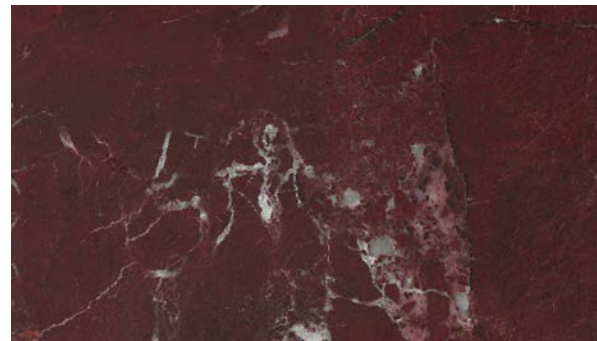
Calacatta Purple CP - Cat. A



Classic Travertine TC - Cat. C



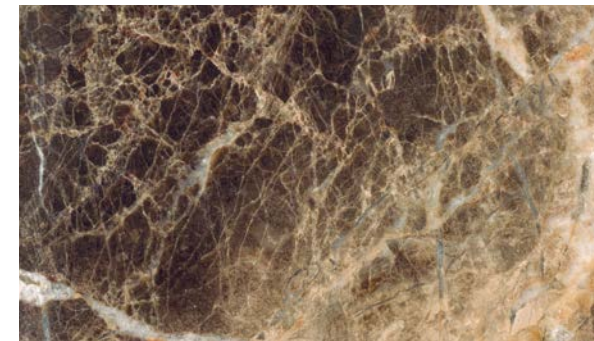
Travertine Walnut TW - Cat. C



Rosso Levanto RL - Cat. A



Portuguese Rose PR - Cat. A



Emperador Dark ED - Cat. C



Carrara White CW - Cat. C



Fior di pesco FP - Cat. B



Yellow Siena YS - Cat. B



Verde Alpi VA - Cat. C



Black Marquina BM - Cat. C



Sahara Noir SN - Cat. B



Red Travertine TR - Cat. B

Woods Collection



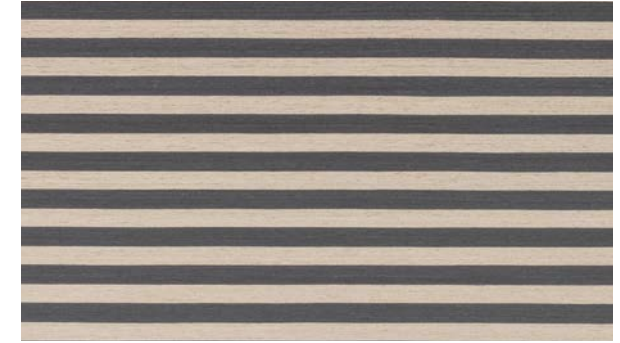
Natural Oak



Bolivar



New Lime



Caleido



Canaletto Walnut



Mahogany

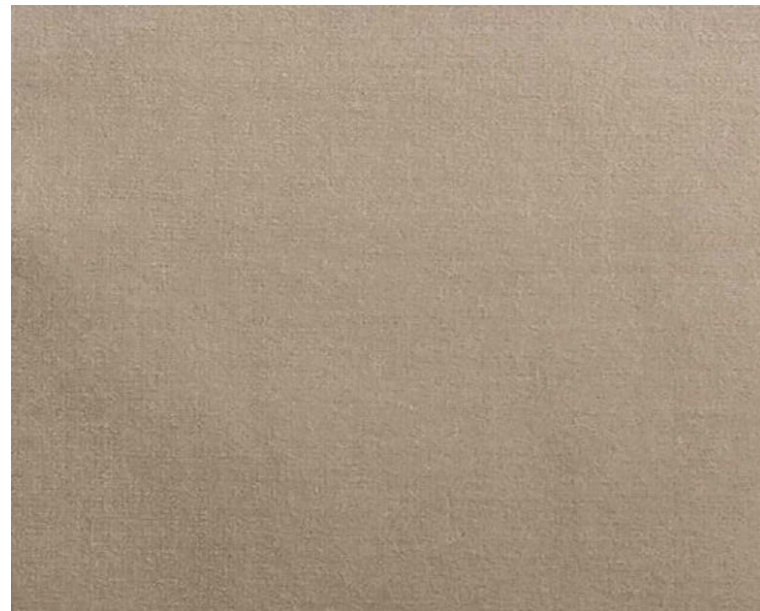


Coffee Moka Sablé



Matt Oak

Adamo&Eva



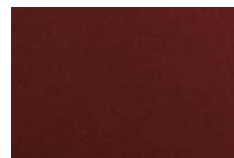
129 - roccia

Category
Cotton Velvet

Composition
100%CO
Weight: g/ml 630
Width: cm 140 - 55.12 inches
Cfa: Yes
Martindale: 50.000

Price Category A

Washing Instructions



116 - cayenne



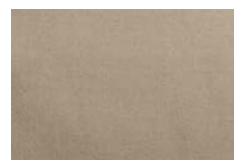
119 - prugna



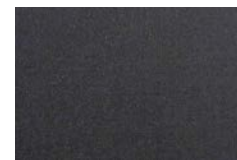
106 - mirtillo



168 - mousse



129 - roccia



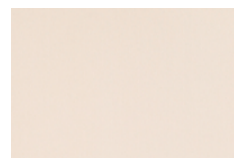
107 - antracite



169 - cactus



104 - indigo



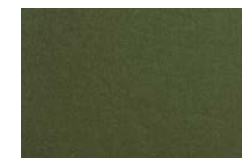
178 - ostrica



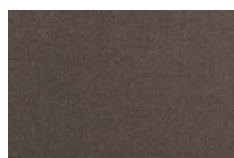
115 - safran



189 - verde inglese



145 - olive



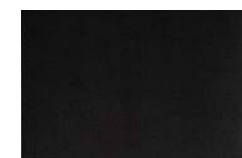
137 - cenere



175 - fumo



170 - notte



138 - nero

An exquisite quality of Italian-made cotton velvet that is soft, versatile and hard-wearing. A palette of 13 colours comprising striking, traditional and neutral shades.

Cord



053

Category
Cotton Velvet

Composition
100% cotton, groundmaterial: 100% cotton
Width: 140 cm
Durability: 100 000 Martindale

Price Category A

Washing Instructions



053



070



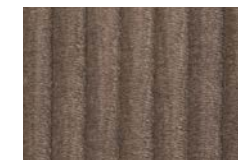
064



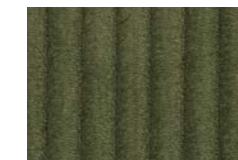
050



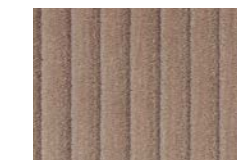
091



020



037



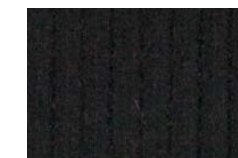
060



033



038



099

Bogardine



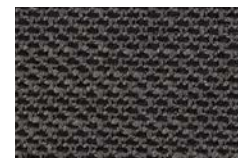
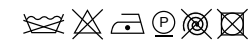
003 - perla

Category
Jacquard

Composition
31%CV 26%CO 24%PAN 10%LI 8%WO 1%PA
Weight: g/ml 960
Width: cm 140 - 55.12 inches
Curtain, Upholstery For Medium/Hard Use
Cfa: Yes
Martindale: 40.000

Price Category B

Washing Instructions



001 - quasinerio



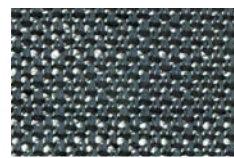
002 - taupe



003 - perla



004 - naturale



008 - ottanio



009 - bianco

Yarns of different types and thicknesses create a textural weave and confer a slight matelassé effect to the surface. Soft and consistent to the hand, hardwearing and ideal for heavy duty seating.

Clay



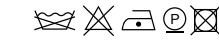
0010

Category
Upholstery

Composition
76% Linen, 21% Cotton, 3% Polyester
Pattern: Solid
Weight: 770 g/lin.m
Width: 140 cm
Durability: 45.000 Martindale
Pilling: 4
Lightfastness: 5

Price Category B

Washing Instructions



002



005



0010



009

Bringing together both natural beauty and a sense of finesse, the creative team have mixed colours of yarn in warp and weft to create an elegant yet casual fabric. The result has a unique structured surface that adds an extra dimension to any interior design scheme. With a back cloth that gives extra stability, Clay is perfect for upholstering furniture. The colours are inspired by the designer's love of both art and interiors and include cool shades of cement, blue, and salvia but also the natural shades of wood and clay.

Clunis



002

Category
Bouclé

Composition
33%WO-25%PL-25%PC-15%CO-2%PA
Width: 137 cm+/- 3%
Weight: 4935 gr/ml - 682 gr/sqm +/- 5%
Martindale: 40000 cycles+/-

Flame resistance
BS 5852-1 (1979) CIGARETTE
BS 5852:2006 CIGARETTE
BS 5852-1 (1979) MATCH
BS 5852:2006 MATCH
CAL TB 117:2013

Price Category B

Washing Instructions



002



006



026



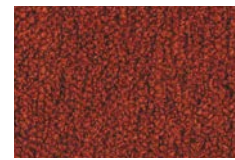
000



029

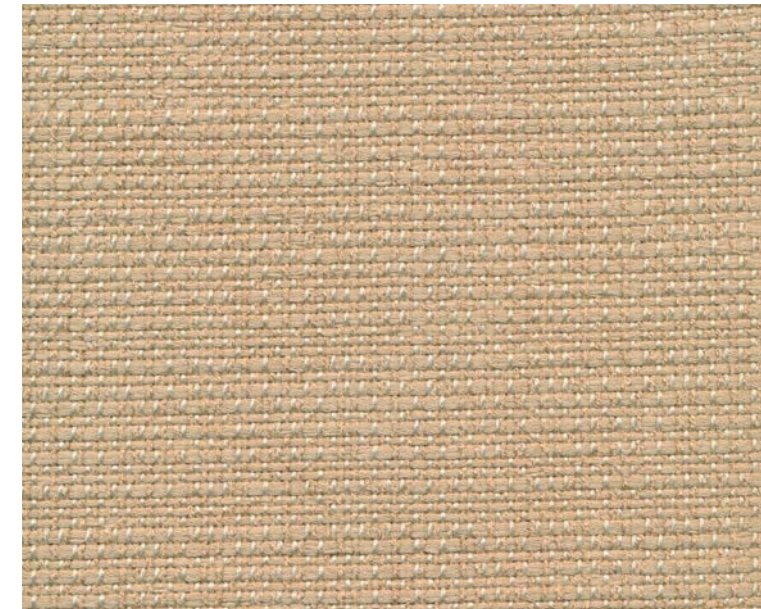


030



025

Lizza



011

Category

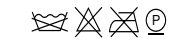
Tape Yarn fabric

Composition
68%VI-29%CO-3%LI
Width: 140 cm+/- 3%
Weight: 1000 gr/ml - 714 gr/sqm +/- 5%
Abrasion Martindale: 25000 cycles+/- 10%

Flame resistance
BS 5852-1 (1979) MATCH

Price Category B

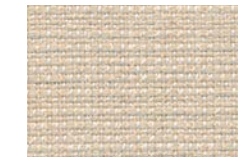
Washing Instructions



030



121



120



092



011



070

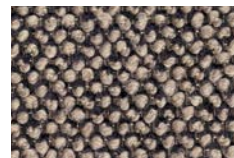


043

Safire



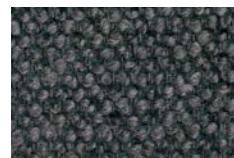
003



003



004



010



008

Category

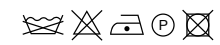
Boucle and chenille

Composition

43% Viscose, 17% Acrylic, 15% New wool, 9% Cotton, 8% Linen, 8% Polyester
 Weight: 1010 g/lin.m
 Width: 140 cm
 Durability: 44 000 Martindale
 Pilling: 3
 Lightfastness: 6
 Sustainability: Greenguard Certification

Price Category B

Washing Instructions



Sinequanon



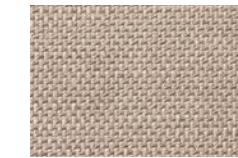
01 - argento



01 - argento



02 - taupe



05 - stone



07 - perla



37 - caffè arabica



08 - linen

Category

Linen and Viscose fabric

Composition

60%CV 16%LI 13%CO 6%PES 5%PAN
 Weight: g/ml 663
 Width: cm 140 - 55.12 inches
 Cfa: Yes
 Martindale: 35.000

Price Category B

Washing Instructions

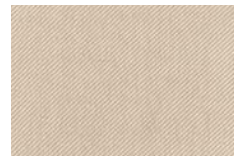


Panama weave with slightly shot yarns. Even here the Dedar offer extends with the linen and viscose cloth, which is durable, bright, boasts a rich texture (Flair, Fifty Fifty, Chambray, Aut Aut, Arbus). A special, careful blend of linen and viscose and a new construction which enables a reduction of the textile weight whilst guaranteeing the aesthetic quality, usage and durability, and also offering good value. This textile, just like the others in this range, feature a waterrepellent treatment which offers specific protection from liquids and oils.

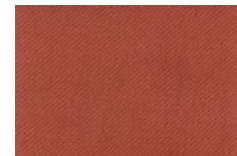
Twiltwenty



4 - cipria



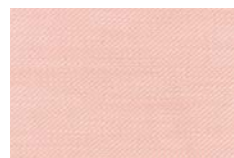
4 - cipria



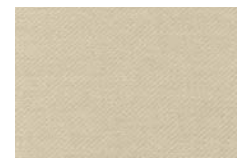
20 - ruggine



7 - nero



9 - pesco



3 - corda

Category

Twill

Composition

100%PI Flame Retardant
 Width: 140 Cm
 Weight: 630 Gr
 Made in: Italy
 Martindale: 80000
 Pilling: 4/5 (Scale 1-5)
 Colour Fastness To Light: 7 (Scale 1-8)
 Colour Fastness To Crocking: 4/5 Dry 4/5 Wet (Scale 1-5)
 Colour Fastness To Chlorinated Water: 4/5 (Scale 1-5)
 Colour Fastness To Sea Water: 4/5 (Scale 1-5)
 Tensile Strength: Class A (En 14465)
 Tear Strength: Class A (En 14465)
 Seam Slippage: Class A (En 14465)
 Other Certifications: Yarns Certified Oeko-Tex
 Fire Certifications: France M1 Nfp902-503-504-505, Germany B1 Din 4102-1, Imo 8 Upholstery, Italia Classe 1 Tendaggi, Uk Cigarette Source 0, Uk Contract Curtains Bs5867, Uk Contract Upholstery Bs7176, U.s.a. Cal Tb117

Price Category B

Washing Instructions

Bonsai



020



021



093



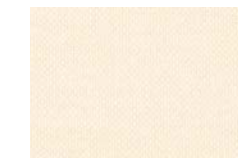
072



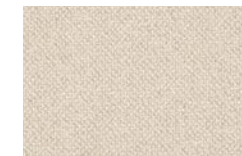
051



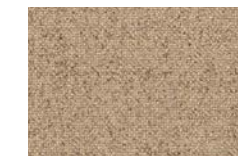
050



070



071



077

Category

Upholstery

Composition

48% PAN 29% CO 23% PES
 Weight: 140 cm
 Width: 905 per linear meter/g
 Width: 646 per square meter/g
 Durability: 50 000 Martindale
 Seam slippage: <6mm
 Pilling (DIN EN ISO 12945-2)
 Rub fastness: Dry 4-5 Wet 4-5
 Lightfastness: for medium colours 5

Flame retardent

BS 5852: Part 1: 1979
 Ignition source 0 (Cigarette)

Fabric

Wave Dobby

Price Category C

Washing Instructions

A classic twill. A particularly thick thread/yarn highlights the "Z" diagonal motif which makes the fabric more dynamic. The shiny and matt threads enhance the effect of the light on the surface.

Diago



500

Category

Multi-Yarn Jacquard

Composition

37%CO-55%VI-8%LI

Width: 140 cm +/- 3%

Weight: 950 gr/ml - 679 gr/sqm +/- 5%

Abrasion Martindale: 27000 cycles +/- 10%

Flame resistance

BS 5852-1 (1979) MATCH

Price Category C

Washing Instructions



500



510



511



530



520

Sofi



187-101

Category

Cotton and viscose frisé

Composition

46%CO-47%VI-7%LI

Width: 850 gr/ml - 607 gr/sqm +/- 5%

Weight: 850 gr/ml - 607 gr/sqm +/- 5%

Martindale: 27000 cycles +/- 10%

Flame resistance

BS 5852:2006 CIGARETTE

BS 5852-1 (1979) MATCH

BS 5852:2006 MATCH

Price Category C

Washing Instructions



187-101



187-000



187-100



187-029



187-090



187-062

Kairos collection



1716 - doeskin

Category

Nabuck leather

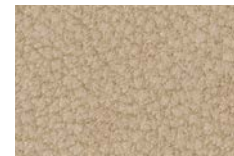
Composition

Bovine of European origin in Nabuk finishing, natural grain.
 The average size of each skin is around 5.0 sqm. Chrome tannage.
 Aniline dyed, finished with high quality oils. Suede look, soft and velvet touch.
 The possible presence of any imperfections testify the authenticity and the natural look of pure aniline leather.
 Average thickness 1,2 - 1,4 mm.

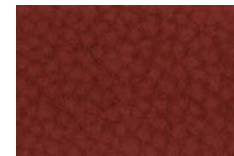
Price Category A



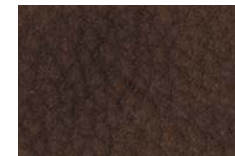
1719 - cangaroo



1716 - doeskin



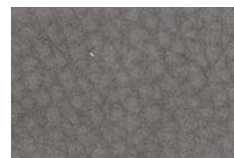
1714 - lucky



1704 - chocolate forest



1701 - caqui



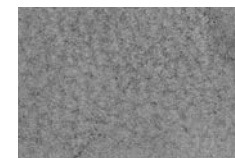
1711 - cenere



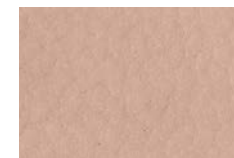
1721 - ematite



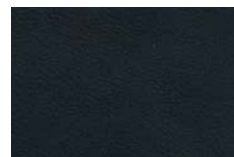
1715 - elephant



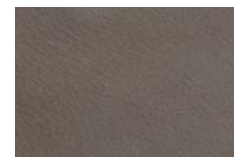
1710 - plomo



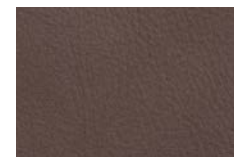
1718 - nude



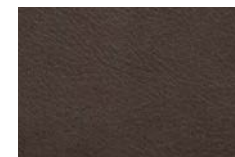
1



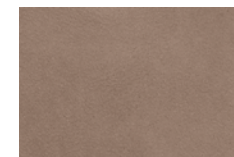
5



6



7



20

Tivano



3611 - corda

Category

European cattle

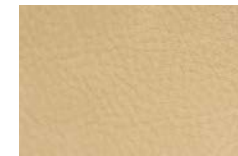
Composition

Raw material: European cattle
 Tanning: Mineral
 Protection: Semianiline
 Description: Waxed hand buffed
 Thickness: 1,2 - 1,4 mm
 Average size: 5,0 m²

Dry finishing locking	EN ISO 11644	≥ n.a. N/cm
Tear resistance	EN ISO 3377-1	≥ 20 N/cm
Flexing endurance	EN ISO 5402	≥ 20.000 runs
Dry rub colour fastness	EN ISO 11640	
	150 runs	≥ 4 grey scale
Wet rub colour fastness	EN ISO 11640	
	25 runs	≥ 4 grey scale
Light fastness	EN ISO 105-B	≥ 4 blue scale
Heat colour fastness	EN ISO 17228	≥ 4 grey scale

Avoid exposure to direct sunlight and heat sources
 Clean frequently and gently with a soft cloth
 Remove stains with a damp cloth or with a specific cleaning product

Price Category A



3611 - corda



3606 - tobacco



3603 - militare



3612 - fumo

Aida collection



Daino

Category

Nappa Smooth leather

Composition

Average size 4.5-4.8 sqm, thickness 0.9-1.1 mm.

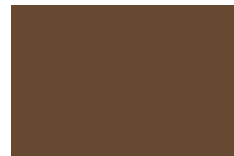
Chrome tannage.

Bovine leather with smooth aspect, aniline finished with some oils and waxes, produced on European bull.

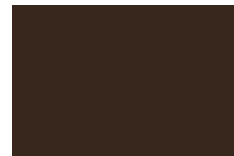
Aniline dyed, finished with high quality oils. Soft article with a slight two tones effect, emotional touch.

The possible presence of any imperfections and color variations are typical for this type of leather as they testify the authenticity and the natural look of pure aniline leather.

Price Category B



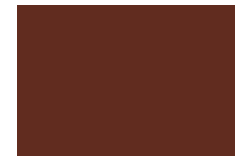
Daino



Coffee



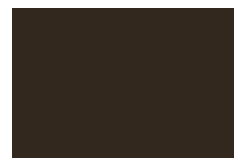
Tan



Saddle



Blackberry



Spruce



Nocturne



Mud



Grey



Sand

Freddie collection



2

Category

High quality bovine leather with full natural grain

Composition

Bovine of European origin, finished thickness 1.4 mm.

Flammability of fabrics – Upholstered furniture for maritime use – IMO FTPC 8 (par. 7.2-7.3)

Flammability of fabrics – Upholstered furniture BS 5852-1:1979 (Crib 0 – Crib 1)

Flammability of fabrics – TB 117:2013

Resistance to bending

UNI EN ISO 5402-1 > 50,000 cycles – unaltered

Price Category B



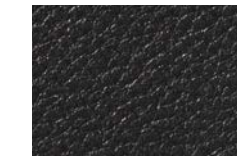
2



3



6



8

Linea collection



647 - grigio perla

Category

High quality bovine leather with lightly buffed natural grain

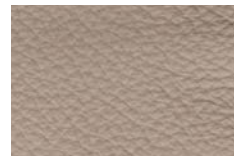
Composition

Bovine of European origin, lightly buffed natural grain, finished thickness 0.9 - 1.1 mm.

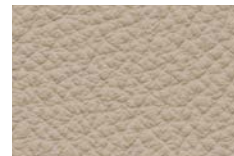
The average size of each hide is around 4.8 - 5.0 sqm. Chrome tannage.

Through dyed; finishing with resins and pigments. Article with a pigmented and protective coat, with a soft, waxy feel and semi-matt appearance.

Price Category C



629 - stone



647 - grigio perla



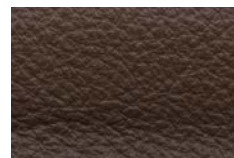
677 - malt



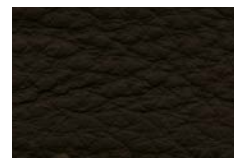
660 - asfalto



675 - new grey



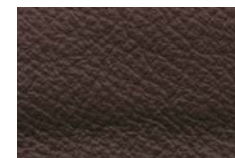
612 - castagna



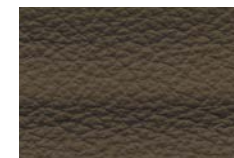
611 - testa moro



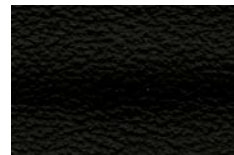
656 - cotto



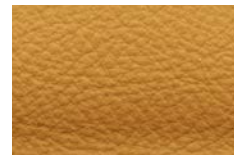
610 - mogano



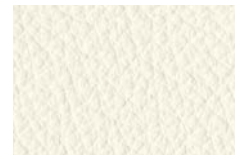
632 - verdone



622 - nero



619 - giallino



634 - gesso



674 - octane

Cuoio Leather

Only for Frame and Flo family of seaters



naturale

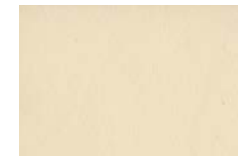
Composition

Bovine of European origin in Nabuk finishing, natural grain.

Average thickness 1.8/2.0 mm. Chrome tannage.

Aniline dyed with pigmented finish.

The possible presence of any imperfections testify the authenticity and the natural look of pure cuoio leather.



avorio



bianco



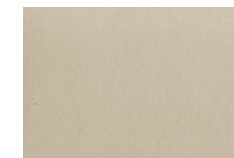
grigio



naturale



nero



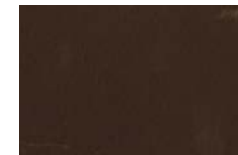
nocciola



rosso bulgaro



sabbia



tabacco



testa di moro



tortora



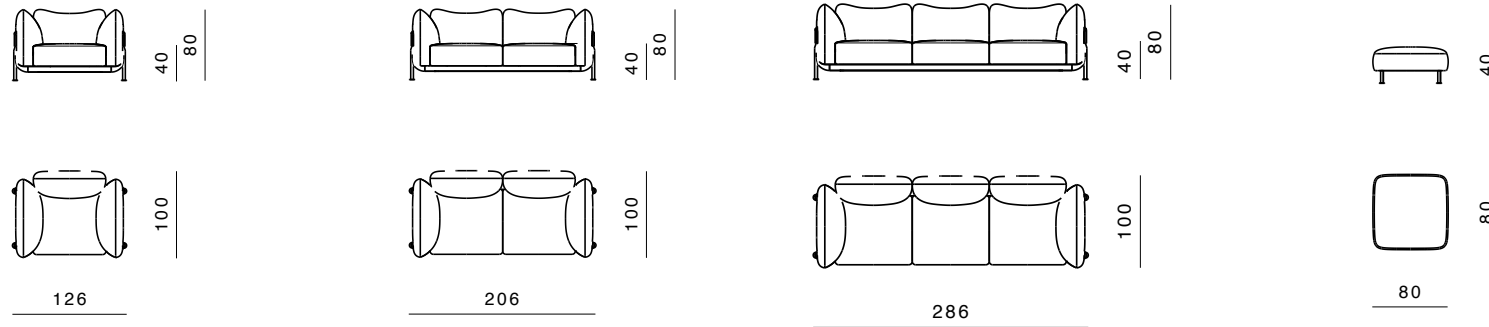
verde fango

Tasca

Sofas and armchair_Robert Stadler

Structure

Internal structure in plywood panel and polyurethane rubber covered in fabric or leather.

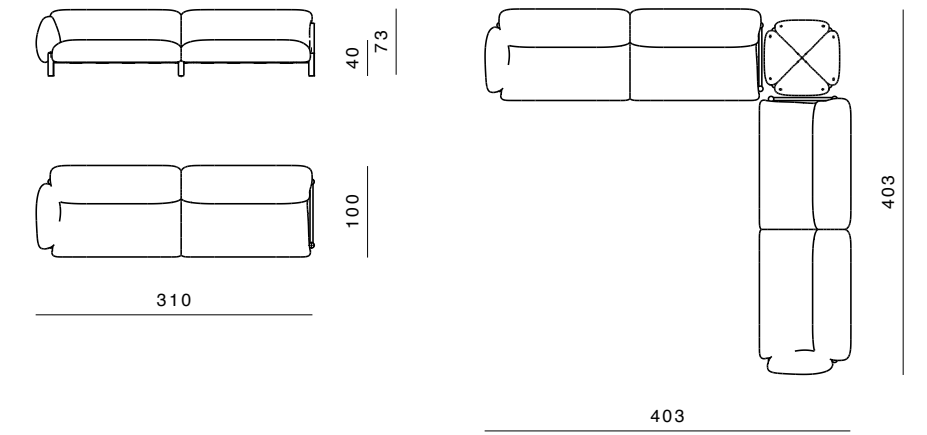
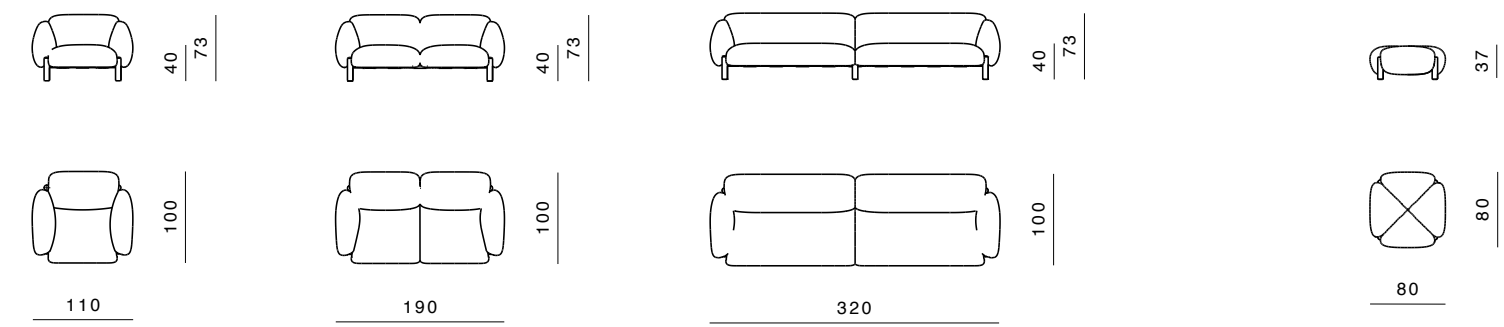


Flo

Sofas, modular sofa and armchair_Lorenza Bozzoli

Structure

Internal structure in plywood panel and polyurethane rubber covered in fabric or leather.



Mambo

Modular sofa and armchair_Lorenza Bozzoli

Structure

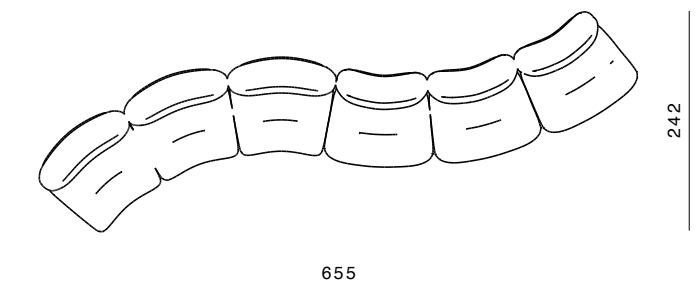
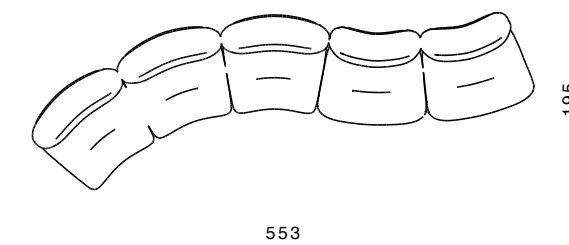
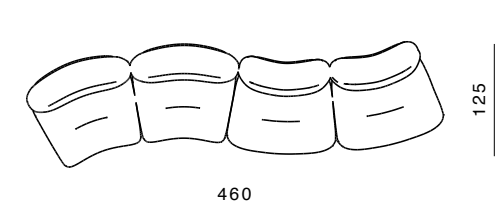
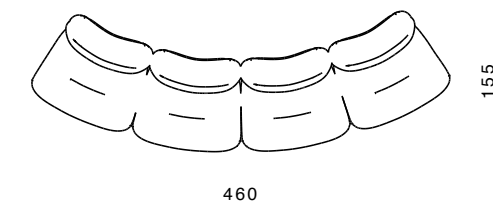
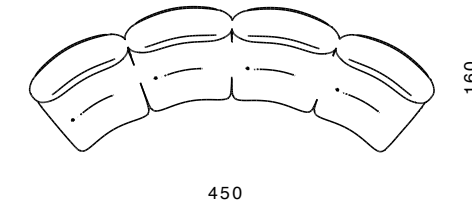
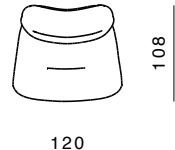
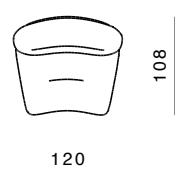
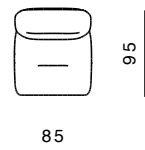
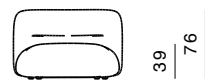
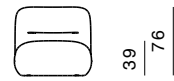
Base in plywood panel and polyurethane rubber of different densities

Cushions

Perimetral cushions in high grammage on wood structure. Seat cushions in polyurethane rubber of different densities. Seat cushions covered with a quilted goose down in light cotton

Covers

Covers are not removable



Tria

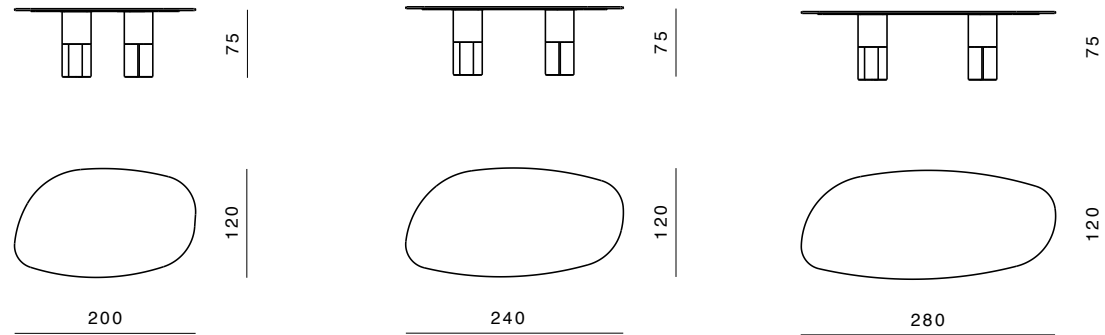
Tables_Lorenza Bozzoli

Structure

Full marble legs.

Top Finishes

20mm marble.



Artù

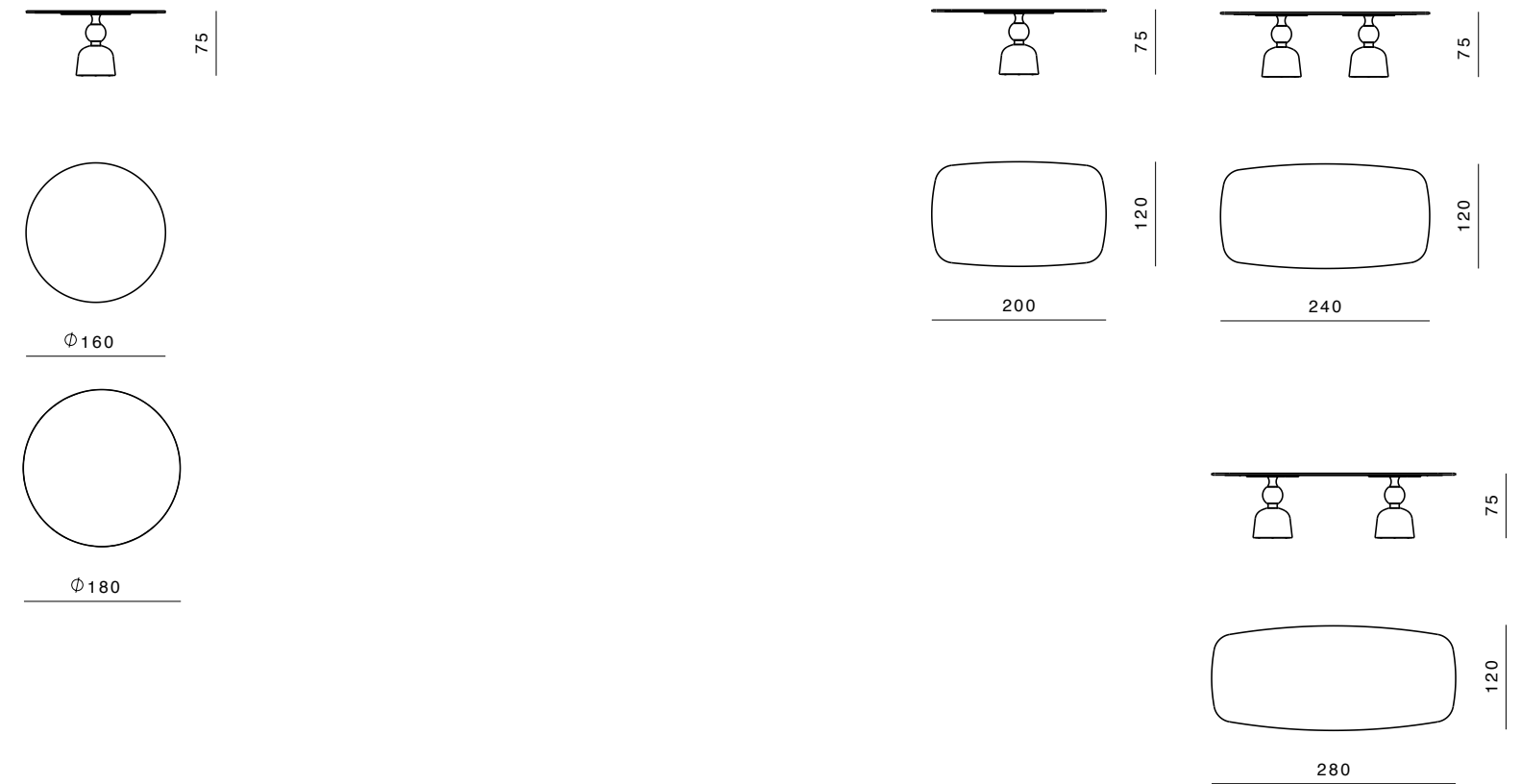
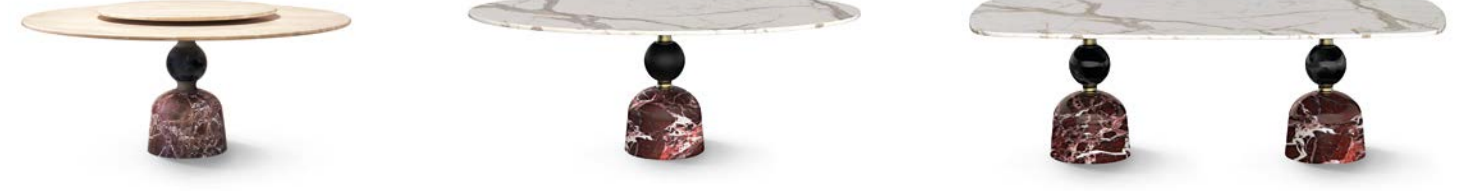
Tables_Paolo Rizzato

Structure

Marble base and sphere.
Aluminum elements worked and finished in house at Ghidini1961.

Top Finishes

20mm marble.



Merlino

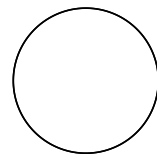
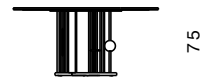
Tables_Paolo Rizzatto

Structure

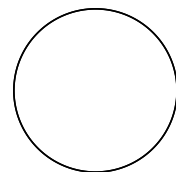
Aluminum structure worked and finished inhouse at Ghidini1961.

Top Finishes

20mm marble, 20mm wood



Φ 160



Φ 180

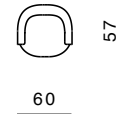
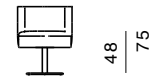
Spritz

Small armchairs_Lorenza Bozzoli

Structure

Base in plywood panel and polyurethane rubber of different densities.

Backrest in polyurethane rubber molded in different densities.

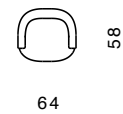
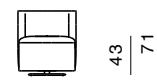


Covers

Covers are not removable.

Base

Spritz is based on water-jet aluminium and finished in house at Ghidini1961.



Arch

Dining chair_Richard Hutten

Structure

Legs in aluminum die casted in house at Ghidini1961. Seat and backrest in high grammage wadding with an internal wood and metallic insert.



Hillary

Dining chair_Richard Hutten

Structure

Legs in aluminum die casted in house at Ghidini1961. Seat and backrest in high grammage wadding with an internal wood and metallic insert.

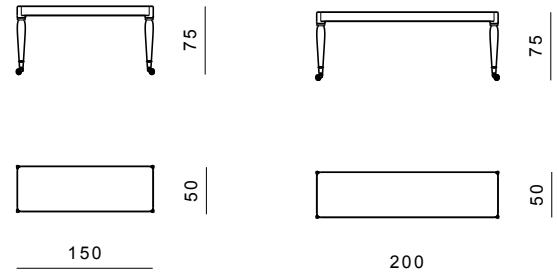


Shaker

Console_Stefano Giovannoni

Top Finishes
100mm wood

Legs
Turned wood with terminal wheel
in brass machined in-house at
Ghidini1961.

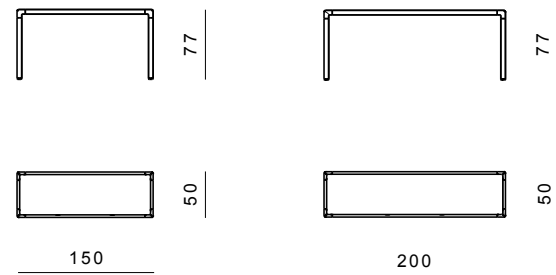


Frame

Console_Stefano Giovannoni

Structure
Die casted aluminium on the
angular elements and tubular
aluminium for the supporting
structure on the perimeter.

Top Finishes
20mm marble, 20mm wood,
20mm cuoio leather

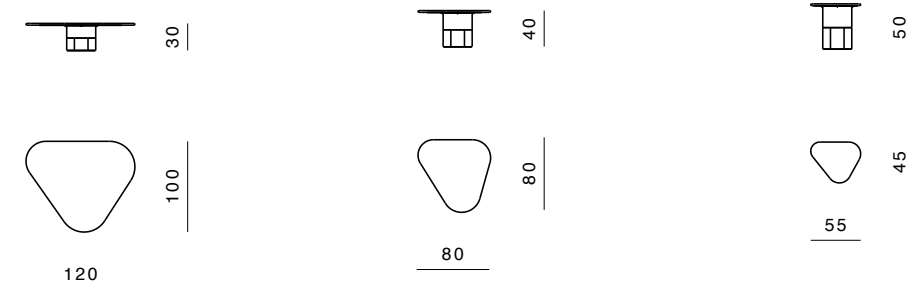


Tria

Small tables_Lorenza Bozzoli

Structure
Full marble legs.

Top Finishes
20mm marble.

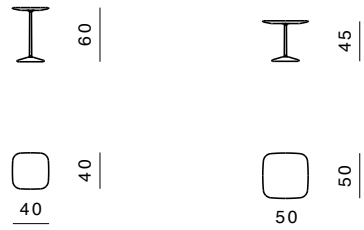


Arnold

Small tables_Paolo Rizzatto

Structure

Base and table top in marble or wood. Central element made of a conic aluminum column.

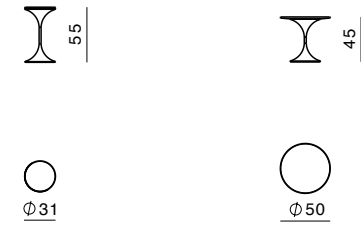


Dapertutto

Small tables_Paolo Rizzatto

Structure

Base in brass die casted in house at Ghidini1961. Table top in marble or wood.

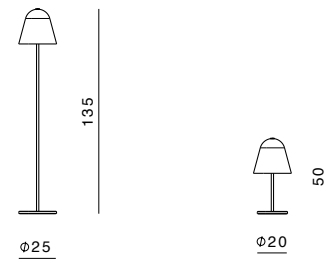


Helios

Lamps_Branch Creative

Structure

Metal structure in painted aluminum. Internal sphere and external cone made by blown glass. LED dimmable light.



Butterfly

Mirror_Richard Hutten

Structure

Mirror with external brass frame and central brass butterfly die casted in house at ghidini1961.



Photos

Fabrizio Bergamo
Cube Photoproduction

Styling

Candida Zanelli, Rosaria Galli

Branding

Christoph Radl, Antonella Provasi

Graphic layout and Printing

Intese Grafiche, Montichiari (Bs)

Many Thanks to:

Jab
Nason Moretti

**GHIDINI 1961 INIDIHΘ**

is a trademark of
Ghidini Giuseppe Bosco spa

via Gabriele D'Annunzio 27
25069 Villa Carcina (BS) Italy
T +39 030 8980521
F +39 030 8981588
info@ghidini1961.com

Press office

press@ghidini1961.com

Sales office

sales@ghidini1961.com

www.ghidini1961.com

