

KFF[®]

Icons of Interior Excellence
– *Project Stories* 42 Best Practices

From vision to reality:
Pioneering projects

KFF®

*Icons of
Interior Excellence*

PROJECT STORIES



*Designing Comfort
since 1984*

KFF GmbH & Co. KG

Grasweg 27 | 32657 Lemgo | Germany
+49 (0) 5261 98590 | info@kff.de

1st edition
as at 11/2024

Creative direction & art direction
linea_weiss, Lemgo, Germany

Editorial & Text
Anja Tischler (KFF), linea_weiss, Maximilian Hülshoff (KFF)

Print
Bösmann, Detmold, Germany

www.kff.de





*Where rooms tell stories
of life: A journey through inspiring
and visionary projects.*

Editorial

Jens Lewe, Managing Director

For us at KFF, creating timeless furniture is more than just designing beautiful objects - it is designing spaces in which people live, work, enjoy and relax. KFF stands for the perfect combination of design and functionality and manufactures seating furniture with the aim of creating living spaces that inspire, excite and endure.

In this contract book we would like to introduce you to some of our favorite projects. They show how our furniture enriches the atmosphere of a wide variety of spaces - from charming boutique hotels and visionary office buildings to iconic restaurants and private retreats. Each project is unique and tells its own story, which we have been able to write together with our partners and customers, and our special thanks go to all those who place their trust in us and make KFF a part of their very individual vision.

It is these collaborative relationships and creative exchanges that drive and inspire us to keep creating something new. We invite you to be inspired by the following pages. Discover what becomes possible when modern design, perfect craftsmanship and a passion for quality come together.

**Thank you for joining us on
this journey.**



Jens Lewe – Managing Director

»For us at KFF, creating timeless furniture means more than just designing beautiful objects – it means designing living spaces that inspire, excite and endure.«

01

GASTRONOMY

<i>Les Deux Dienstbach</i>	P. 09
<i>Jan's Restaurant at Detmolder Hof & Café Elbing</i>	P. 23
<i>L'Osteria</i>	P. 49
<i>Restaurant Patio</i>	P. 64
<i>Pietsch & Zeitwerk</i>	P. 80
<i>Restaurant at Golfhotel Lindenhof</i>	P. 136
<i>Restaurant MUST</i>	P. 158
<i>Speisemeisterei at Castle Hohenheim</i>	P. 186
<i>Lukullum</i>	P. 212
<i>Japanese Restaurant Akaiten</i>	P. 238

02

HOTEL BUSINESS

<i>Amrai Suites</i>	P. 36
<i>Naturhotel Waldklause</i>	P. 77
<i>Trifôret Alpin Resort</i>	P. 105
<i>Villa Etaner at Premium Eco Resort PRIESTEREGG</i>	P. 122
<i>Motel One</i>	P. 151
<i>Hotel WunnersWat</i>	P. 173
<i>Hotel Tiefenbrunner</i>	P. 203
<i>Holzgauer Haus</i>	P. 221
<i>Hotel Hermitage Vital Resort</i>	P. 252

03

PUBLIC BUILDINGS

- Hall 1 Frankfurt Trade Fair P. 70
- Lodges - SchücoArena Bielefeld P. 91
- Workspace Heins arbeitet P. 147
- Loxone Campus at Mühlviertel P. 179
- Allianz Arena BayWa-Lodges P. 192
- Zeppelin Museum Friedrichshafen P. 209

04

COMPANY BUILDINGSS

- Clage Sales Center P. 16
- Headquarters Kubox Rotterdam P. 61
- Arkform Büro Wien P. 109
- Aquila Capital Hamburg P. 116
- Headquarters Hagl Development GmbH P. 131
- Schüttflix-Tower in Gütersloh P. 164
- Office space for human unlimited P. 225
- Anumar P. 230

05

PRIVAT PROPERTIES

- House C P. 33
- Chalet in Courmayeur P. 43
- Villa in the park P. 56
- Thatched house on Ameland P. 87
- Revitalized old building villa P. 99
- Color blocking in old buildings P. 143
- Apartment in an old building in Vienna P. 198
- Tranquil ambience in minimalist luxury P. 236
- High and low dining at home P. 244



01



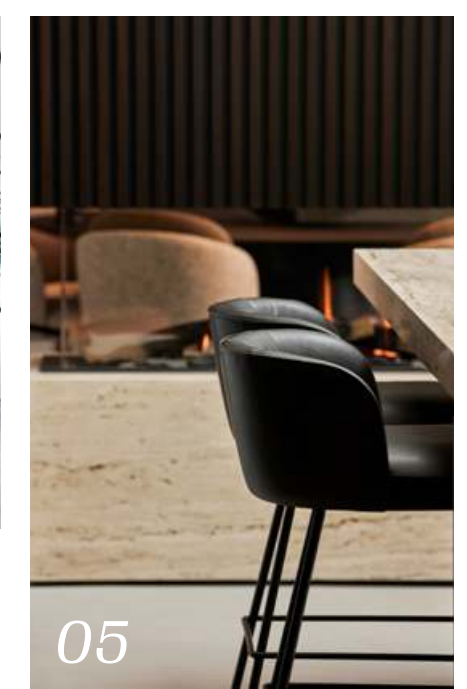
02



03



04



05

QUICKFINDER

P. 256

INDEX

P. 258

Category
Gastronomy, Restaurant

Hochheim am Main, Germany



Les Deux Dienstbach

Interior design
JUNG & KLEMKE
Led by interior designer Yvonne Klemke
and architect Michael Jung



Photography
Faruk Pinjo

Design is a pleasure for the eye. Our GAIA model even more so. But design alone does not satisfy. Since March 25, 2022, *Les Deux Dienstbach* has been a great place to combine the two. The French restaurant run by twins Jennifer and Nathalie is located in one of Germany's best wine estates - the Künstler wine estate in the Rheingau. The winery itself was founded in 1965 in the Rheingau, and the Künstler family originally comes from Austria. A small reminiscence of the old homeland is the Grüner Veltliner in the range - the white parade grape of Austria.

This winery likes to break new ground, including the cultivation of the Portuguese grape variety Alvarinho, which is used for the well-known and popular Vinho Verde, and with this creative spirit, they didn't just want to renovate the winery's old staff canteen. Together with Jennifer and Nathalie - who have been successfully running their restaurant *Les Deux Dienstbach* since 2012 - they designed the new restaurant in the charming ambience of the winery. An open space, a large table for large groups or as a place for communication.

The retained architecture breathes history. And could certainly tell a story or two. For this exciting interior concept, the interior design firm *JUNG & KLEMKE*, headed by interior designer Yvonne Klemke and architect Michael Jung, opted for GAIA by Monica Armani in an understated yet impressive color scheme and choice of materials. The chair blends in perfectly with the redesigned room and promises East Westphalian seating comfort in addition to the excellent wines and top French cuisine. Classic French cuisine of the highest quality and wines to kneel down to. What more could you want?

FRANCE & AUSTRIA

merge with a top-class German winery.

GAIA chair (5 back elements)
with 4-leg tubular steel frame

Backrest in fabric LISBOA Col.: 31
Seat in leather BELO grünsplan 1647
Frame metal black | moodblack M01

GAIA counter stool (5 back elements)
with 4-leg tubular steel frame

Backrest in fabric LISBOA Col.: 31
Seat in leather BELO grünsplan 1647
Frame metal black | moodblack M01





MAVERICK bar stool low
with 4-leg tubular steel frame conical

Shell outside and inside in leather RAWHIDE dawn 352
Frame metal black | moodblack M01

Photography
Paul Gerdes

Clage Sales Center

The interior of the *Clage Sales Center* in Lüneburg is an inspiring representation of the harmonious interplay of warm woods, geometric shapes, clean surfaces and soft colors. For example, the warm wood tones create a cozy atmosphere that is perfectly complemented by the geometric shapes of the MAVERICK counter stool in the 4-leg version with conical round tube frame, while the minimalist surfaces of the interior concept and the Maverick tables from our partner ASCO bring a modern and clear structure to the room and skilfully set accents in an environment otherwise dominated by warm tones.

They underline the precision and quality that both *Clage* and KFF bring to their products. Soft colors that appear throughout the room lend the interior a calming and harmonious tone. They provide a balancing contrast to the bold geometric shapes and emphasize the inviting and creative work environment.

Category
Company Buildings

Lüneburg, Germany



MAVERICK chair
with 4-leg wooden frame conical

Shell outside and inside in leather RAWHIDE black 356
Frame solid wood natural oak, oiled

Maverick round table by ASCO
in oak white, oiled



MAVERICK counter and bar stool low
with 4-leg tubular steel frame conical

Shell outside and inside in leather RAWHIDE dawn 352
Frame metal black | moodblack M01

Modul plus system table and Maverick bar table by ASCO
in oak white, oiled





Photography
KFF | Anja Tischler

23

✿ Awarded with one Michelin star

Jan's Restaurant at Detmolder Hof & Café Elbing

The listed building of the Detmolder Hof has shone in new splendor since its extensive renovation in 2008. Under the direction of the renowned designer Anna Maria Jagdfeld, who has already worked in prestigious hotels such as the Hotel Adlon and the Grand Hotel Heiligendamm, the hotel was redesigned with great attention to detail. The result is 13 luxuriously furnished double rooms and suites that offer guests maximum comfort.

But it's not just the overnight guests who get their money's worth. Since March 2019, Jan Diekjobst, who acts as tenant, managing director and head chef, has been spoiling visitors with culinary delights. In the following year, *Jan's Restaurant* was further upgraded with a tasteful renovation. A particular highlight in this stylish ambience are the YOUMA CASUAL chairs, which were chosen in individually upholstered versions. Their sumptuous, soft upholstery embraces guests and ensures long-lasting seating comfort while they enjoy the award-winning dishes. *Jan Diekjobst* has fulfilled another dream with *Café Elbing*. Guests can expect an exquisite selection of food and drinks served in a charming and inviting atmosphere.

The successful combination of historical architecture and modern design creates a place in the heart of Detmold's old town where you can feel at home and enjoy excellent cuisine - or even a slice of cake. *Jan Diekjobst* was awarded his first Michelin star in March 2021, setting new standards for gastronomy in the region.

Category
Gastronomy, Restaurant and Café

Detmold, Germany



Jan Diekjobst

*»We are all hosts and want to
embody not just a profession, but
a vocation.«*

YOUMA CASUAL chair with armrests
with 4-leg tubular steel frame

Shell outside and inside in leather DAKOTA pine 6002
Seat cushion in customer fabric
Frame metal brass M28





LUNAR LIGHT chair
with 4-leg tubular steel frame

Backrest in customer fabric
Seat in leather DAKOTA oxblood 6004
Frame metal brass M28

TRADITIONAL COFFEE ENJOYMENT IN A HISTORIC AMBIENCE

Café Elbing in Detmold, run by star chef *Jan Diekjobst*, combines tradition and cozy coffee enjoyment in a relaxed and comfortable atmosphere. As the oldest café in the town, it has become a popular meeting place for lovers of homemade cakes and freshly brewed coffee specialties. In the idyllic rose garden or in the stylish interiors of the listed building, you can relax and enjoy the end of the day.

The design of the café emphasizes the combination of tradition and modernity that runs through *Jan Diekjobst's* concept. The carefully selected furniture blends perfectly into the harmonious and homely atmosphere of the café, creating a welcoming environment that invites you to linger. In addition to cakes and coffee, the café also offers breakfast at weekends and impresses with its attention to detail in the design. Here you will find pure Lippe nonchalance - a casual but stylish calm that appeals to both locals and guests to the region. *Café Elbing* sets itself apart from *Jan's Restaurant* and focuses on relaxation and the enjoyment of small, fine delicacies in a historic setting.





GAIA LINE counter stool

with 4-leg tubular steel frame

Backrest, seat and piping in leather SAUVAGE moro 8101
Frame metal black mat structured M02

Category

Private properties

Design office

studio segers architecten

Photography

Steven Massart

House C in Belgium is a prime example of contemporary architecture, designed by *studio segers*. This project reflects the typical aesthetics of the Belgian architecture firm, which is known for its clear lines, minimalism and harmonious use of natural materials. *studio segers* pursues a restrained yet concise design language in its projects. *House C*, with its elegant and functional form, fits seamlessly into this tradition. The interior of *House C* is characterized by refined minimalism, with each element carefully selected to complement the space without dominating it.

This is where the GAIA LINE counter stool from KFF fits in perfectly. The combination of clear, sculptural lines and high seating comfort is ideally suited to the aesthetic principles of *studio segers*. The GAIA LINE impresses with its delicate elegance and understated yet impressive presence, reflecting the design philosophy of *studio segers*: Beauty through reduction. The functional pieces of furniture in *House C* emphasize the harmony between form and function, a hallmark of *segers' architecture*. The GAIA LINE counter stool not only creates an aesthetic highlight, but also offers the comfort that is often underestimated in minimalist style. Thanks to its slender shape, it fits perfectly into the architecture of *House C* and emphasizes the elegant linearity of the living spaces.

The deliberate choice of materials such as metal and leather in the stool's finish corresponds perfectly with the natural materials used throughout the building. This creates a flowing interplay between furniture and architecture that is both visually and functionally impressive. *House C* and the GAIA LINE from KFF are a successful example of how sophisticated architecture and expressive furniture design can go hand in hand.

House C







Photography
Alpstein Architekten

Amrai Suites

Category
Hotel business

Schruns, Austria

Interior design & architecture
Alpstein Architekten



LUNAR PURE chair
with 4-leg tubular steel frame

Backrest in shaped fleece anthracite
Backrest cushion and seat in fabric
DANUBIO dark grey 1179
Frame metal old rose structured M26

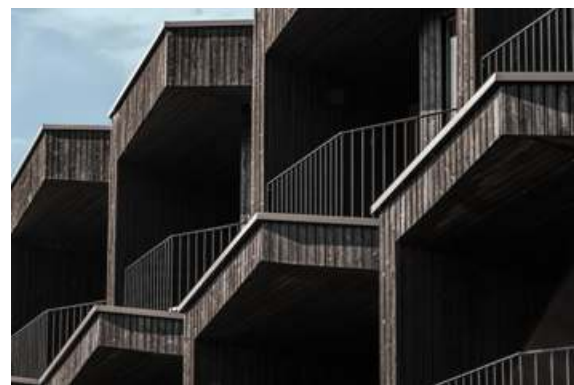
ALPINE ELEGANCE MEETS MODERN LUXURY

In the picturesque Montafon, surrounded by the idyllic mountains of Vorarlberg, the *Amrai Suites* represent a unique symbiosis of alpine tradition and modern luxury. The extraordinary design of the suites was created to offer guests a special blend of comfort and stylish elegance. Here, centuries-old Vorarlberg craftsmanship meets contemporary interior design - a concept that characterizes the atmosphere of the hotel. A central element of this design concept is the LUNAR PURE by KFF, which seamlessly bridges the gap between tradition and modernity in *Amrai's* suites and common areas.

With its clear, geometric shape and purist lines, the LUNAR PURE fits perfectly into the hotel's minimalist, inviting aesthetic. The chair combines high-quality materials with exceptional seating comfort, making it an ideal fit for the philosophy of the *Amrai Suites*: a luxurious retreat and at the

same time a place of relaxation and security. The interior design of the *Amrai Suites* is characterized by natural materials such as wood and stone, which are complemented by modern accents. The LUNAR PURE harmonizes perfectly with this environment, bringing clean lines and understated elegance to the rustic cosiness.

Thanks to the use of the finest materials and its perfect workmanship, the chair exudes a special quality that lives up to *Amrai Suites'* claim: to offer guests not just accommodation, but an experience. The careful choice of materials for the LUNAR PURE reflects the sustainable and environmentally conscious approach that the *Amrai Suites* pursue with their holistic concept. This understanding of sustainability and regionality is evident in every detail of the hotel - from the interior to the warm hospitality that makes a stay in the Montafon an unforgettable experience. Whether it's a leisurely breakfast with a view of the mountains or a relaxed dinner in the hotel's elegant restaurants - the LUNAR PURE by KFF ensures that comfort and design merge.





MAVERICK chair
with 4-leg tubular steel frame conical

Shell outside and inside in leather DAKOTA stone 6005
Frame metal black | moodblack M01

Chalet in Courmayeur

Architecture and design office
m²atelier
Under the direction of architects
Marijana Radovic and Marco Bonelli

Category
Private properties

Courmayeur, Switzerland





Courmayeur, a small town at the foot of Mont Blanc, is a rare pearl of beauty overlooking the mountain range of Europe's largest glacier. The windows of the house overlook the magnificent Mont Blanc.

m²atelier renovated a house of about 180 square meters, transforming an anonymous apartment with no particular architectural features into a residence where the typical themes of local tradition coexist with modern lines.

The sources of inspiration were the materials and the mountain landscape of Courmayeur. Thanks to these two elements, the apartment was given the identity of a chalet that projects it into the future without forgetting tradition. Wood, metal and stone are the materials that characterize this project. The wooden ceilings made of recycled beams and planks in various sizes give the rooms the welcoming atmosphere typical of mountain architecture. The wide walnut floorboards match the ceilings.

The MAVERICK by KFF with matching leather fits perfectly into the overall concept, while the lighting highlights the potential of the material and emphasizes the essence of history and the perfect combination of modernity and tradition.



M²ATELIER

The international company *m²atelier* was founded by Marco Bonelli and Marijana Radovic, architects from Milan, who merged two previous firms with almost 20 years of experience. Thanks to their multidisciplinary approach, fed by continuous research into materials, space and proportions, and a stylistic design characterized by attention to detail, *m²atelier* designs unique works for clients all over the world.

Photo
Giovanni Malgarini

L'Osteria



Category

Gastronomy, Restaurant

Kamen, Dortmund and Berlin, Germany

GAIA counter chair (5 back elements)
with 4-leg tubular steel frame

Backrest in fabric LISBOA Col.: 23
Seat in leather DAKOTA black 6008
Frame metal black mat structured M02

YOUMA CASUAL chair with armrests
with wire skid frame

Shell outside and inside and seat cushion in
leather DAKOTA brown 6001
Frame metal black mat structured M02

ITALIAN HOSPITALITY

SODA GROUP has redesigned the Freestander restaurant floor plan for the L'Osteria system gastronomy chain and optimized it for a smaller construction site. In the interior, which offers space for 220 seats, the bar and open kitchen immediately attract the attention of guests entering.

The classic features of *L'Osteria* restaurants, such as the striking counter cladding, the service station and the characteristic appearance of the kitchen, have also been retained in the new Freestander. The design is complemented by an innovative lighting concept with LED technology and modern controls, which supports the company's sustainability efforts. *L'Osteria* attaches particular importance to a pleasant atmosphere, which is underlined by the choice of high-quality materials and furniture. At locations such as Kamen and Berlin, furniture from the manufacturer KFF plays a central role in the design concept. The store in Kamen is furnished with the elegant GAIA counter chairs in antique

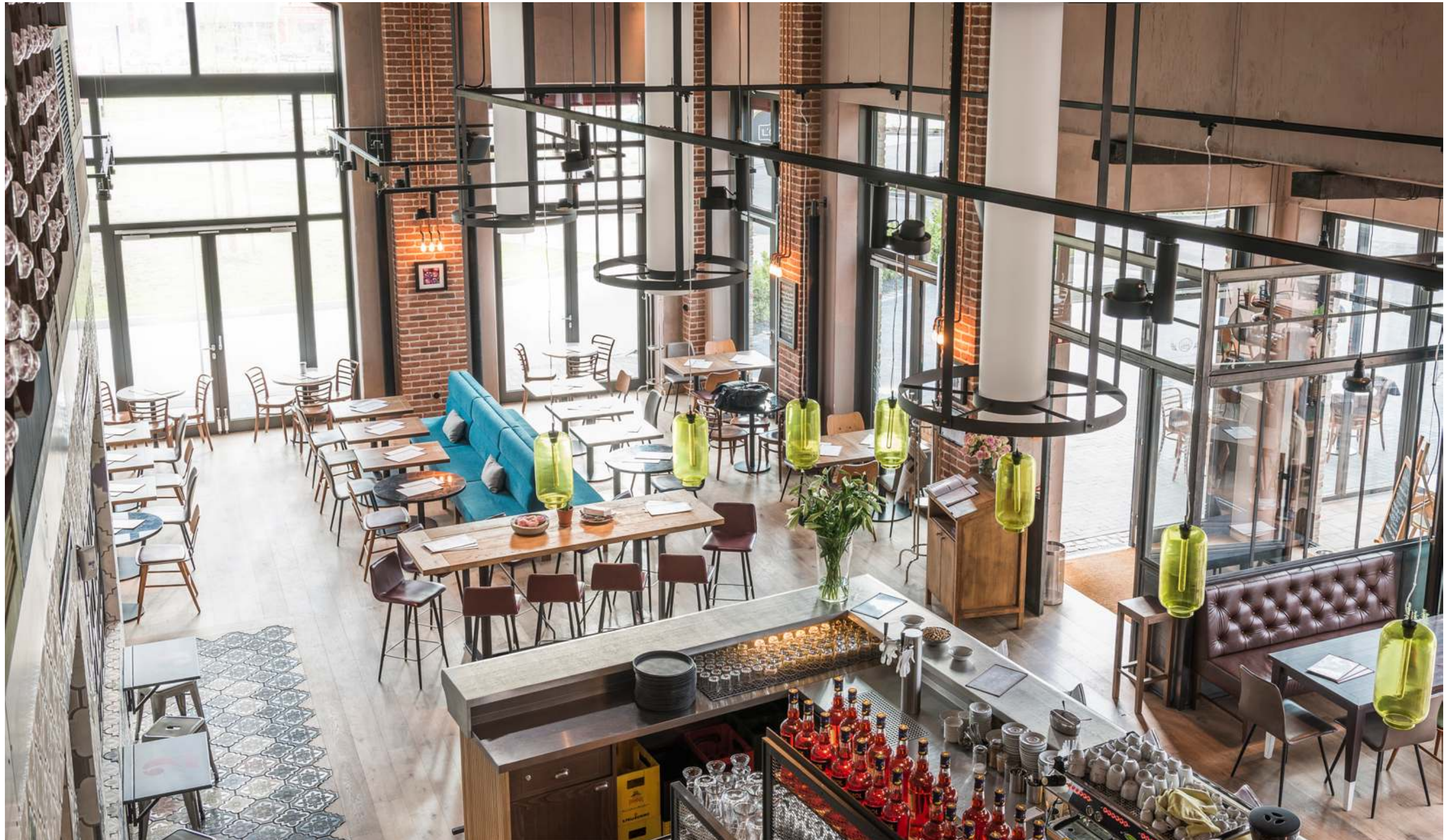
GAIA chair (5 back elements)
with 4-leg tubular steel frame

Backrest in fabric LISBOA Col.: 24
Seat in leather DAKOTA black 6008
Frame metal black mat structured M02

pink and the comfortable GAIA chairs in bottle green, which blend harmoniously into the warm wooden interior and the cozy industrial chic. This furniture not only creates a cozy atmosphere, but also offers a high level of seating comfort for guests, which contributes to a long stay. Here, the room concept was implemented in such a way that the open kitchen layout in combination with the KFF furniture creates an inviting and modern ambience. Guests can not only enjoy the handmade pizza here, but also linger in a stylishly designed environment that reflects the characteristic blend of tradition and modernity.

The *L'Osteria* in Berlin, on the other hand, impresses with its urban location and emphatically spacious design. KFF furniture is also used here, with its combination of robust materials and elegant design underlining the modern interpretation of the traditional Italian dining room. The accents set in the interior by models such as MAVERICK and YOUMA CASUAL provide lively contrasts, while the industrial design picks up on the urban flair of the capital. The furniture from KFF can be found not only in these two locations, but in many other *L'Osteria* branches throughout Germany. It is an integral part of the interior design, which is characterized by its high-quality workmanship and well thought-out design to offer guests a comfortable and stylish restaurant experience.





MAVERICK bar stool high
with 4-leg tubular steel frame conical

Shell outside and inside in leather DAKOTA oxblood 6004
Frame metal black mat structured M02



MAVERICK chair
with 4-leg tubular steel frame conical

Shell outside and inside in leather DAKOTA grey 6006
Frame metal black mat structured M02

GAIA counter chair (7 back elements)
with 4-leg tubular steel frame

Seat and Backrest in leather SILK brandy 186
Frame metal macadamia structured M22

Villa in the park

Photography

Peter Baas-Design Jeroen de Nijs

Category

Private properties

Alkmaar, Netherlands





ARVA chair with armrests
with 4-leg star frame
and 5-leg star frame SL with castors

Shell with armrests and seat cushion in leather
SAUVAGE terracotta 8112
Frame metal macadamia structured M22

Interior design
Vanessa van Tiggehoven

Category
Company Buildings

Rotterdam, Netherlands

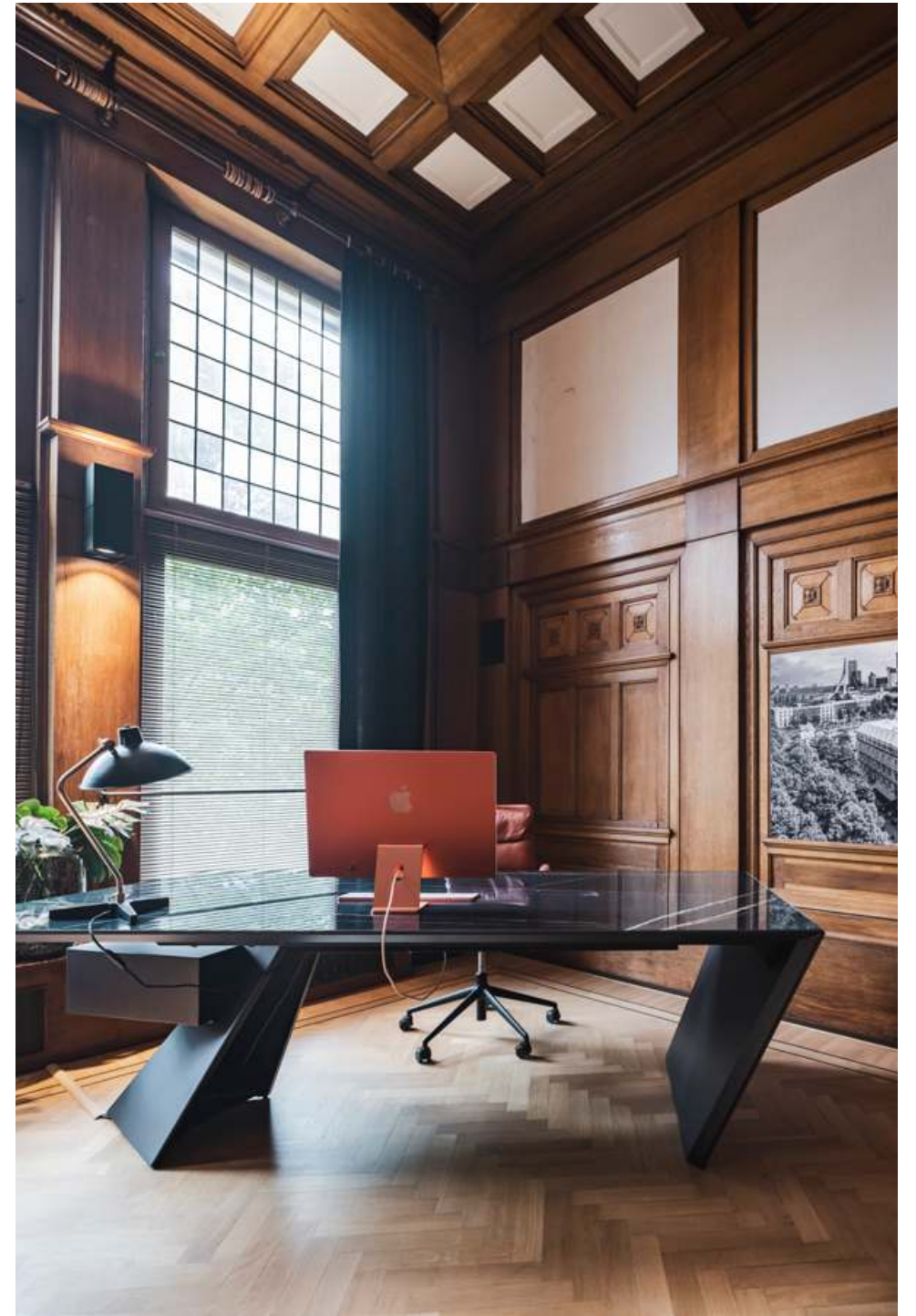
Headquarters Kubox Rotterdam

Kubox's new headquarters in Rotterdam, located in the trendy harbor district of De Veerhaven, impressively demonstrates how high-quality furniture from KFF can enhance modern working environments and create a homely atmosphere at the same time. Renowned interior designer *Vanessa van Tiggehoven* opted for a luxurious and stylish mix of paneled walls, black and white photography and fine materials such as wood, stone and leather.

Our ARVA model really comes into its own in this exclusive ambience. The ARVA from KFF not only combines timeless design with modern comfort, but also fits perfectly into the luxurious interior with its elegant leather upholstery and filigree metal frame. It not only offers ergonomic comfort, but also emphasizes the aesthetic demands of the room - and thus meets the high standards that *Kubox* sets for its interior design. This project illustrates how seating furniture from KFF creates a special atmosphere not only in private rooms, but also in modern offices.

Photography
Peter Baas Photography





Category
Gastronomy, Restaurant

Berlin, Germany

Restaurant Patio

TEXAS chair with armrests
with 4-leg square steel frame

Shell with seat cushion in leather MILANO rosso 265
Seam in beige
Frame metal chrome M07

Photography
KFF | Anja Tischler





Mathias Böhme

»I bought an old floating workers' accommodation from the Water and Shipping Authority at an auction and a long-cherished dream finally took shape in my mind's eye.«

PLEASURABLE FUSION: TOP GASTRONOMY ON THE SPREE

At *Patio Berlin*, top gastronomy and regional delights combine to create a unique culinary experience on the Spree. Here, the passion for first-class cuisine is brought to life with the art of transforming local products into extraordinary creations. A place where the palate and soul are equally pampered and the TEXAS chairs perfectly round off the stylish ambience.

The restaurant is located near Bellevue Palace and offers top gastronomy that attracts guests from near and far. Under the creative direction of head chef Christopher Kumper, dishes are created with international inspiration and a special focus on regional products. Close collaboration with local producers enables the team to source fresh, high-quality ingredients from the surrounding area.

The *Patio* itself prides itself on its inviting ambience and emphasizes that once guests are on board, they rarely leave without a good reason. In addition to the outstanding quality of the dishes, the appealing design of the TEXAS chairs also contributes to the cozy atmosphere. The chairs offer comfort and style so that guests can enjoy their culinary experience to the full. *Patio Berlin* is therefore not only a place for excellent food, but also a place where guests feel welcome and at ease. With its unique location on the Spree and its focus on regional products, the restaurant sets new standards for the gastronomic scene in Berlin.



Hall 1

Frankfurt Trade Fair



Architecture
geiseler gergull architekten

Photography
Moritz Bernouilly

Category
Public buildings

Frankfurt am Main, Germany





GAIA chair with armrests (7 back elements)
with 4-leg tubular steel frame

Backrest in fabric LISBOA Col.: 15
Seat in STEELCUT TRIO 3 Nr. 883
Frame metal black | moodblack M01

MAVERICK chair
with 4-leg wooden frame conical

Shell outside and inside in STEELCUT TRIO 3 Nr. 883
Frame natural walnut, oiled

Modul plus system table by ASCO
in natural walnut, oiled

NEW CONSTRUCTION OF THE CAFÉ BARS IN HALL 1

As part of a refurbishment project, the approximately 30-year-old north-east façade of exhibition *hall 1* was renovated by *Murphy & Jahn Architecture*. In addition, the existing café in the exhibition hall was redesigned and harmonized with another, newly built café. Architecture *geiseler gergull architekten*, which was commissioned to design the new building, opted for two KFF models with different seat heights for the seating.

Hall 1 is the only exhibition hall in Frankfurt that creates a direct link to the city through the trade fair entrance on Ludwig-Erhard-Anlage. By extending the bay window into the outdoor area, two cafés have been created here, one above the other. With areas spanning several storeys, a space-forming framework is created that generates a great long-distance effect, both within the hall and towards the city - the »window to the city«.

MAVERICK counter stool high
with 4-leg solid wooden frame angular

Shell and Frame in oak black stained, varnished

Modul plus system table by ASCO
in natural walnut, oiled

The two café areas feature several interlocking areas that offer seating at both high dining and dining height. The organic shapes introduced by the GAIA chair together with the round representative of ASCO's Modul plus system tables are broken up by cubist variations of the tables arranged at right angles. The MAVERICK chair, together with its high-backed brother, the counter stool, warms up the loft character of the architecturally expressive rooms.

In gentle contrast to the signal color that adorns the walls, the seating furniture from KFF was used in soft shades of blue. The warm wooden surface of the tables plays off the cool concrete floor. During the redesign, the seating areas were moved out of the exhibition areas and against the new glazing. The cafés become a viewing platform and quiet zone within the hustle and bustle of the trade fair.





Category
Hotel business

Unterlängenfeld, Austria

Naturhotel Waldklausen

Photography
Andre Schönherr

GAIA chair with armrests (7 back elements)
with tubular steel skid frame

Backrest in fabric LISBOA Col.: 24
Seat in leather SIENA greystone 1258
Frame metal custom color



ARVA chair with armrests
with wire skid frame

Shell with armrests and Seat cushion in leather WILD ANILIN warmgrey 8008
Frame metal macadamia structured M11

✿ Awarded one Michelin star each

Pietsch & Zeitwerk



Category
Gastronomy, Restaurant and bar

Wernigerode, Germany

Photography
KFF | Anja Tischler



YOUMA CASUAL chair with armrests
with wire skid frame

Shell outside in fabric LISBOA Col.: 3
Shell inside and seat cushion in leather DAKOTA tan 6000
Frame metal black mat structured M02

THIS IS WHERE »DEAD GRANNY« MEETS JAPANESE WAGYU



Robin Pietsch, one of the leading figures in top gastronomy in Germany, has put the Harz region on the culinary map with his two exceptional restaurants, *Zeitwerk* and *Pietsch*. As the only star chef in the region, *Pietsch* pursues different concepts in both restaurants - but one thing remains constant: the high quality, which is reflected not only on the plates but also in the furnishings.

This exclusive atmosphere is created by the *YOUMA CASUAL* model from *KFF*, which ensures comfort and style at the highest level. *Pietsch*, a small bar restaurant with just a few seats, offers guests a very special experience.

YOUMA CASUAL counter chair
with wire skid frame

Shell outside in fabric LISBOA in 23 colors
Shell inside and seat cushion in leather DAKOTA tan 6000
Frame metal black mat structured M02





Ten or more courses with culinary influences from all over the world are served here, with a focus on Japanese cuisine. Between truffles and hamachi, mochi and vin jaune, guests can take a seat on comfortable YOUMA CASUAL counter stools. The lavishly upholstered chairs offer maximum seating comfort and allow guests to enjoy the dishes to the full - while observing the open kitchen and the precise craftsmanship of *Robin Pietsch's* team. *Zeitwerk*, *Pietsch's* first restaurant, which opened in 2012, also plays a central role.

YOUMA CASUAL also plays a central role. With a consistently regional approach to the menu and a simple, natural interior, *Zeitwerk* invites its guests to enjoy the region's specialties in an authentic atmosphere. YOUMA CASUAL chairs with armrests are used here, which emphasize the rustic yet modern character of the restaurant with their combination of supple leather and exciting cord velvet fabric. White tablecloths and pretentious decorations are nowhere to be found - instead, a mix of wood, leather and fabric dominates, exuding naturalness and harmony.

In both *Pietsch* and *Zeitwerk*, it is clear that first-class cuisine and well thought-out interiors go hand in hand. The furniture from KFF blends seamlessly into the overall look of both restaurants and helps to ensure that the dining experience remains unforgettable for guests - whether it's a truffle course at *Pietsch* or a signature dish such as the »Dead Granny« at *Zeitwerk*.



GAIA chair with armrests (7 back elements)
with 4-leg tubular steel frame

Backrest in fabric LISBOA Col.: 18
Seat in leather RAWHIDE nordic blue 354
Frame metal black mat structured M02

Nightingale table by ASCO
in RohDesign burnt oak black, textured brushed, oiled
Frame metal black mat structured M02

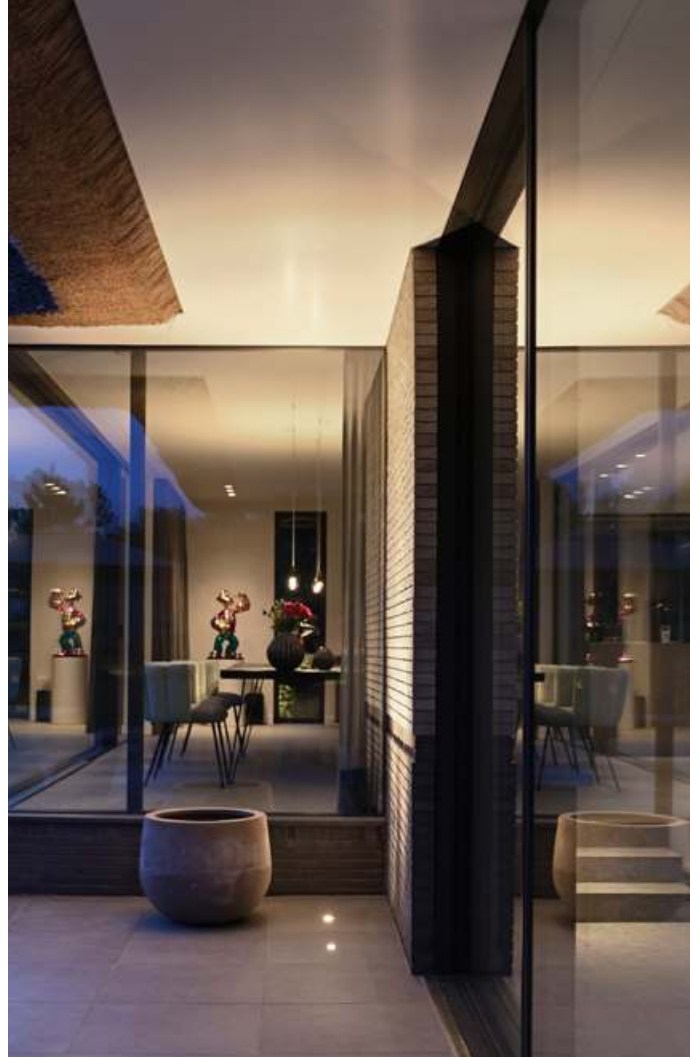
Thatched house on Ameland

Category
Private properties

Ameland, Netherlands

Planning
ARTEC bouwkundig ontwerp

Photography
The Art of Living magazine



GAIA LOUNGE easy chair
with 4-leg tubular steel frame

Backrest in fabric BLAKE graphite 66
Seat in leather DAKOTA stone 6005
Frame metal black mat structured M02

Category
Public buildings

Photography
KFF | Anja Tischler

Lodges – SchücoArena Bielefeld



The star is the stadium and the action on the pitch. The discreet color scheme in the interior makes »the Alm«, today's *SchücoArena*, shine all the more. Finely coordinated, natural materials such as wood, leather and fabric, as well as a special lighting concept consisting of pendant and recessed luminaires, create a unique space with a particularly high quality of stay.

The furnishings of the extension are chosen in such a way that the box is perceived as an independent design element in the stadium. All materials follow uniform design principles and use recurring surfaces, colors and textures. By means of a defined staggering of the seating heights of GAIA LOUNGE easy chairs in the area of the extensive glazing, a large dining table with ARVA LIGHT chairs and ARVA LIGHT counter stools at high tables in the rear area of the box, zones of different lingering qualities and atmospheres are created. An unobstructed view of the pitch is guaranteed at all times.

Interior design
jonek + dressler architekten

ARVA LIGHT counter stool
with wire skid frame

Shell outside in fabric LISBOA Col.: 7
Shell inside in leather DAKOTA stone 6005
Frame metal black mat structured M02

Maverick counter table by ASCO
in natural oak, oiled





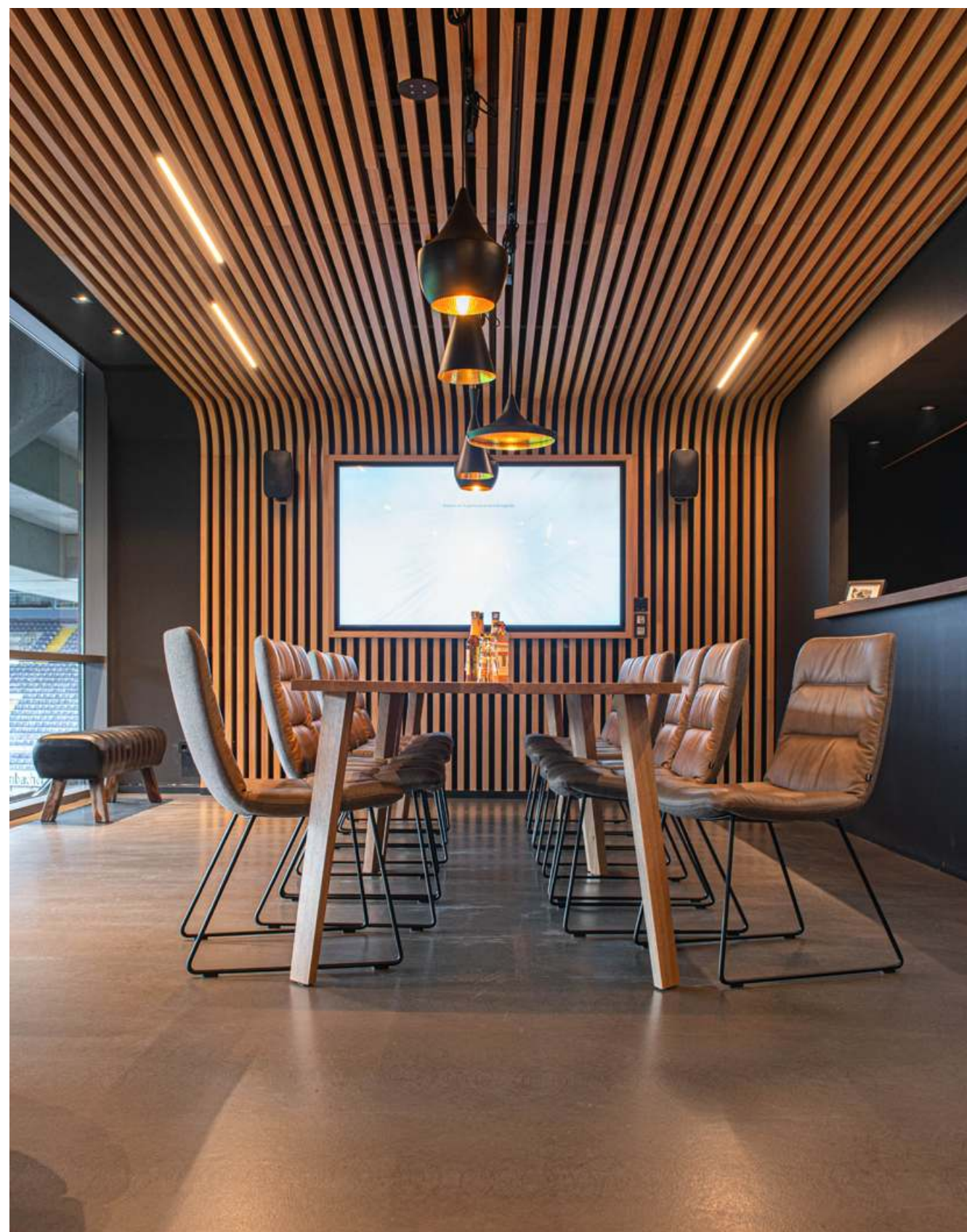


ARVA LIGHT chair

Shell outside in fabric FACET shitake 124
Shell inside in leather DAKOTA stone 6005
Frame metal black mat structured M02

Maverick table by ASCO

in natural oak, oiled



Revitalized old building villa

**Interior design, planning and
execution**
Mayr & Glatzl

Category
Private properties

Mauer, Germany



Photography
Gabriel Büchelmeier

TURN OF THE CENTURY IN THE HERE AND NOW

The interior of the charming old villa in Mauer was carefully transformed into contemporary living space with great attention to detail. The planners *Mayr & Glatzl* managed to harmoniously combine the special charm of the turn of the century with no-frills design.

Characteristic elements of the old building, such as the original double doors and the newly laid historic tiles in the entrance area, form a stylish and homely composition together with the minimalist shapes of the custom-made joinery, the finest fabrics and cleverly placed design pieces. With the GAIA model from KFF and designer Monica Armani, an apartment could be revitalized so effectively. GAIA brings life into the home and blends perfectly into the modern ambience, especially with its colorful

selection and tasteful mix of materials. The room layout on the first floor was redesigned by *Mayr & Glatzl*. The living area and kitchen swapped positions and now create a flowing transition that allows for spacious yet cozy living. The kitchen, which now faces both the entrance hall and the garden, becomes the communicative center of the house. The office has been cleverly separated from the living room and can now only be accessed via the hallway, which ensures more privacy when working and a more comfortable living room.

The planners placed particular emphasis on the owners' detailed storage space requirements. The height of the old building was cleverly used in the checkroom, dressing room and kitchen to create sufficient storage space. Various boxes, drawers and carefully fitted details were used to meet the diverse needs and possible uses. The result is a harmonious overall look that combines the elegance of the old building with modern living comfort.

GAIA chair with armrests (7 back elements)
with 4-leg tubular steel frame

Backrest in fabric LISBOA Col.: 11 / 18 / 24, leather SAUVAGE blue 8110, leather SILK merlot 183 / marine 181
Seat in leather SAUVAGE blue 8110, leather SILK merlot 183 / marine 181
Frame metal black mat structured M02





GAIA counter stool (5 back elements)
with 4-leg tubular steel frame

Backrest and seat in customer leather
Frame metal black mat structured M02



MAYR & GLATZL AT FORMDEPOT

The creative collaboration between Joachim Mayr and Heinz Glatzl began in 1999 - and with it the success story of M&G. Initial projects, a showroom in Kreuzgasse and trade fair appearances laid the foundations for their growing success. In 2015, they founded the Form-depot in the 16th district, which has since become not only a unique place for design and cooperation, but also the company headquarters of M&G. Thanks to the expansion of the office space, there is now room for all partners under one roof - bundled design expertise at the highest level.

Photo
Jeff Mangione



ALVARO chair
with 4-leg tubular steel frame

Backrest and seat in customer fabric
Frame metal black | moodblack M01

Trifôret Alpin Resort

Interior design and furnishings
Appia Contract GmbH

Photography
Annabelle Lehnert

Category
Hotel business

Hinterstoder, Austria



ARVA LIGHT bar stool
with wire skid frame

Shell outside and inside in customer leather
Frame metal black | moodblack M01



Photography
Tina Weiler (left) & Annabelle Lehnert (right)



Arkform Büro Wien

Category
Company Buildings

Vienna, Austria

Interior design
Arkform

The move to Felberstraße 80 in 1150 Vienna marks the start of a new chapter for the *Arkform* architectural office. After the first few years in the 13th district, where the office in Lilienfeldgasse had its origins, the space there soon became too small. The new location, in a historic building of the former gas meter factory, now offers the ideal conditions: more space, light and an inspiring atmosphere to promote creative work and innovative designs. The design of the new premises reflects *Arkform's* philosophy: creating spaces that combine functionality and aesthetics. The ARVA LIGHT model from KFF was chosen for the furnishings - as a chair and easy chair, both swivel and with a skid frame, as a cozy lounge chair, as a bench or as a bar stool.

The long-standing collaboration between *Arkform* and KFF extends beyond the new office and has already produced impressive results in other projects - including the *Loxone Campus* (see page 178).

The impressive architectural details of the building, such as the green staircase, harmonize perfectly with the modern furnishings and create a creative and free working environment. With the new office in Felberstrasse, *Arkform* has found a location that reflects the principles of architecture: Designing spaces with character and quality.



ARVA LIGHT chair with armrests
with 4-leg star frame SL

Shell outside and inside with armrests in fabric BOSTON ash 5319
Frame metal black mat structured M02



ARVA LIGHT bar stool
with wire skid frame (with cross bar)

Shell outside and inside in fabric BOSTON forest 5323
Frame metal black mat structured M02





ARVA LIGHT LOUNGE easy chair
with wire skid frame

Shell outside and inside with armrests in fabric BOSTON ash 5319
Frame metal black mat structured M02

Category

Company Buildings

Hamburg, Germany

Aquila Capital Hamburg

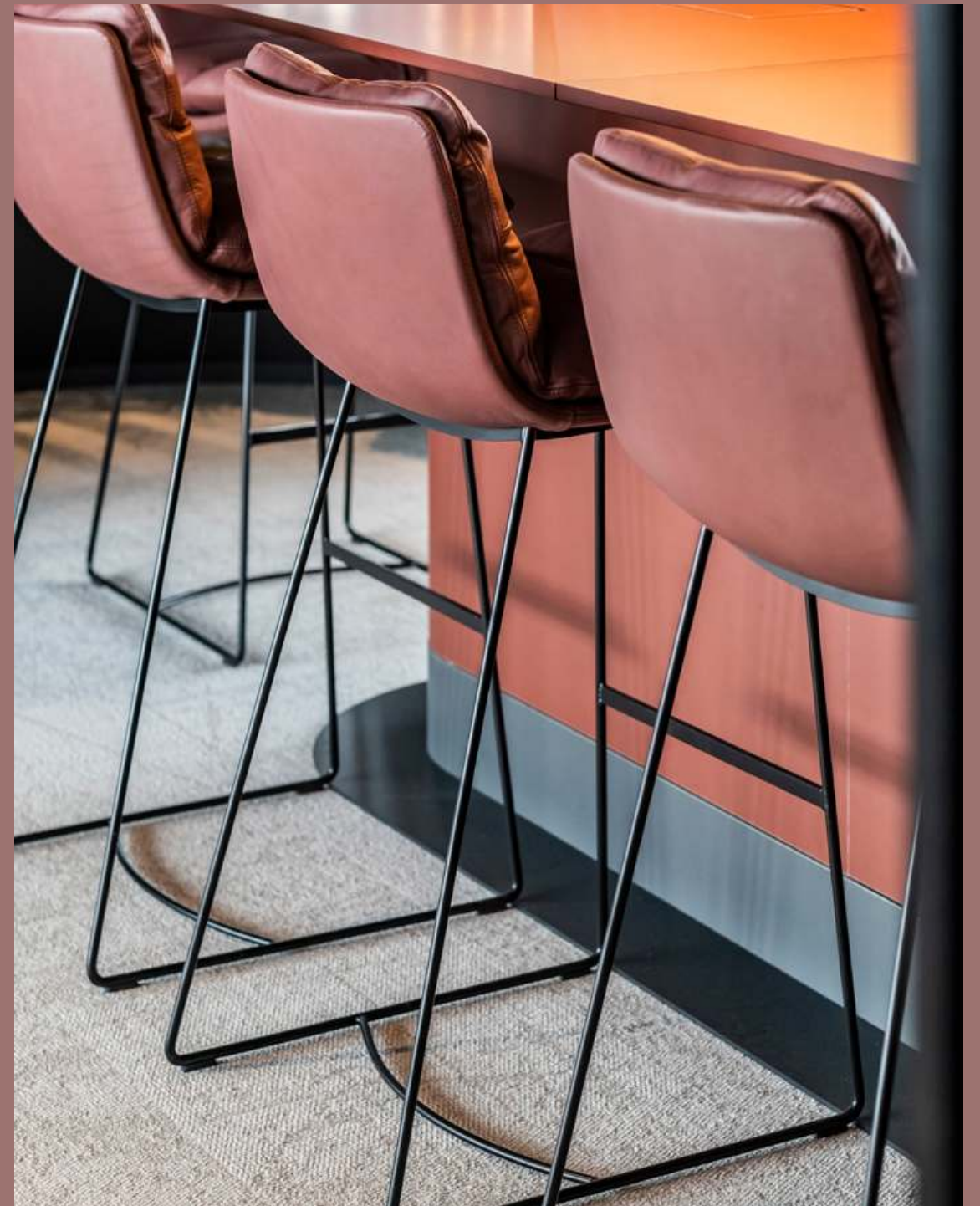
Design office

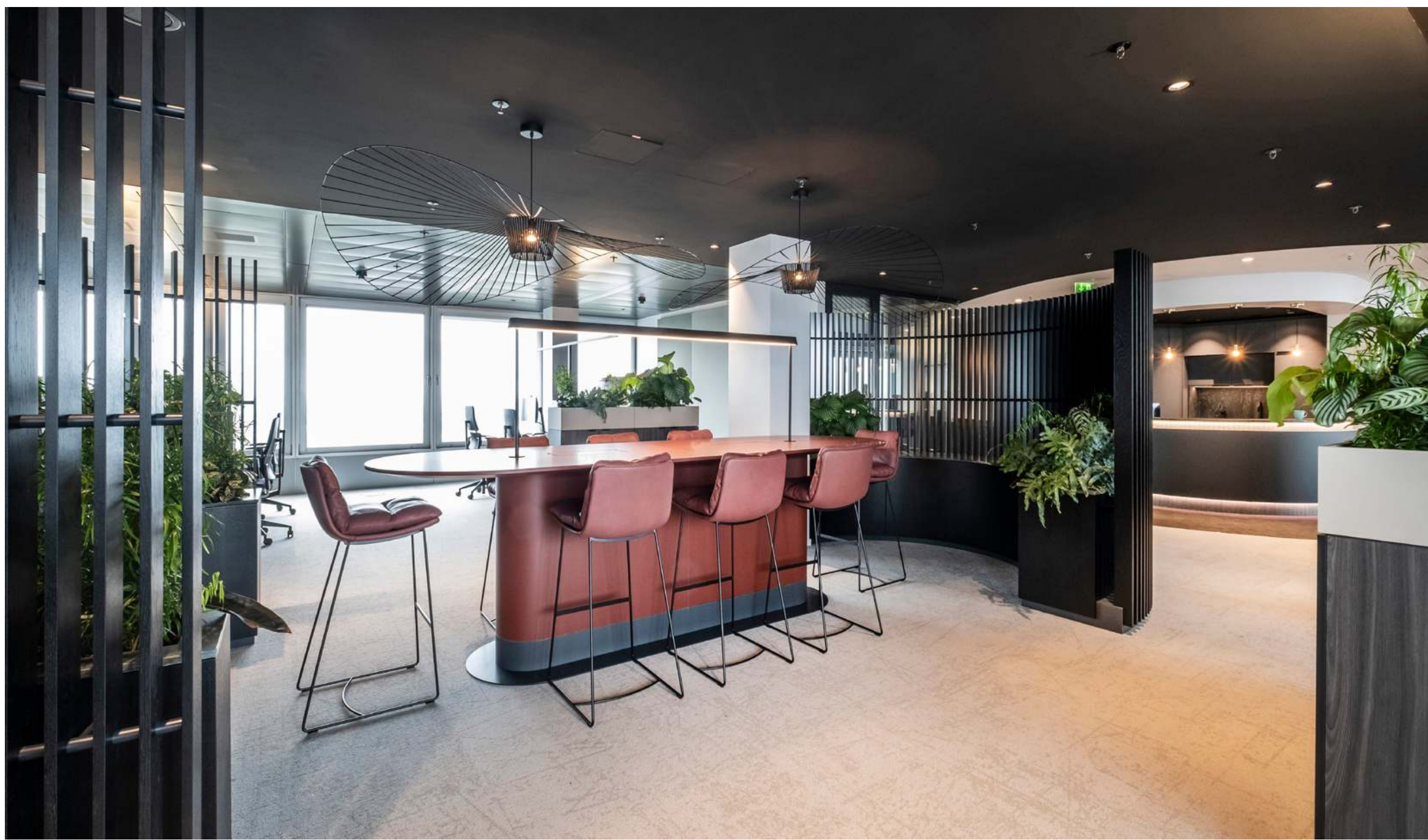
Elbstrand & Mannschaft GmbH

By creating an innovative working environment on 4,500 square meters, the sustainability-focused investment company has launched a visionary initiative that meets its highest standards. The aim was to achieve platinum DGNB certification - a prestigious award that only three office projects worldwide have achieved to date. In the listed EMPORIO Tower, which is located in one of Hamburg's best locations, a future-oriented working environment is being created that combines both functionality and aesthetics. An important component of this concept is the ARVA bar stool from KFF, which creates a pleasant atmosphere in the shared work areas with its elegant design and high level of seating comfort. The harmonious combination of design and sustainability not only redefines everyday working life, but also creates an inspiring environment for creative processes.

Photography

Arnt Haug Photography







ARVA bar stool
with wire skid frame with cross bar

Shell and seat cushion in leather SILK merlot 183
Frame metal black | moodblack M01

Category

Hotel business

Leogang, Austria

Villa Etaner at Premium Eco Resort PRIESTEREGG

Villa Etaner combines modern design with high-quality furniture from KFF to create a harmonious atmosphere that embodies both elegance and functionality in the midst of the idyllic nature of the *Premium Eco Resort Priesteregg*.

Photography

Premium Eco Resort PRIESTEREGG / Günter Standl Photography

GAIA LOUNGE easy chair

with 4-leg tubular steel frame

Backrest and seat in leather KENIA brown 6103

Frame metal black | moodblack M01





GAIA CALICE LOUNGE high-back easy chair
with 4-leg tubular steel frame

Backrest and seat in leather KENIA brown 6103
Frame metal black | moodblack M01





ALPINE ELEGANCE AT 1,100 METERS



The *Villa Etaner* in the well-known *Premium Eco Resort PRIESTEREGG* in Leogang in Salzburger Land invites you to stay. Together with specialists, the host couple Renate and Huwi Oberlader spent two years developing a revolutionary interplay of seven energy systems. Green luxury is also the motto of the 250m² *Villa Etaner*, which embodies a symbiosis of sustainability, generosity and modernity. Equipped with stylish interiors and high-quality furnishings, the villa offers exceptional comfort and luxury in a beautiful design. In the lounge and dining area, the comfortable and exciting GAIA chairs and GAIA LOUNGE easy chair by Italian designer Monica Armani were selected.

The *PRIESTEREGG BATH*, which is directly accessible via the villa, is dedicated entirely to the element of water and also creates a breathtakingly flowing transition between the materials in the interior. This is where the GAIA CALICE LOUNGE statement high-back chair finds its well-deserved place.

GAIA chair with armrests (7 back elements) on previous page & GAIA LOUNGE easy chair
with 4-leg tubular steel frame

Backrest and seat in leather KENIA brown 6103
Frame metal black | moodblack M01



Headquarters Hagl Development GmbH

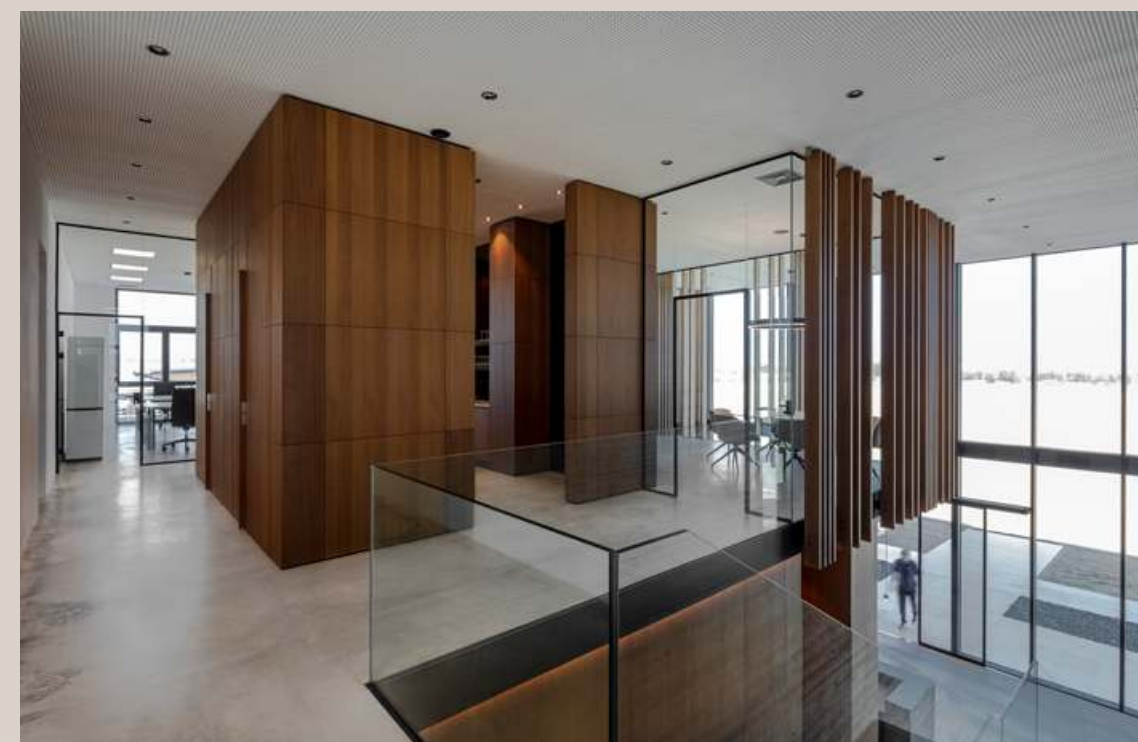
131

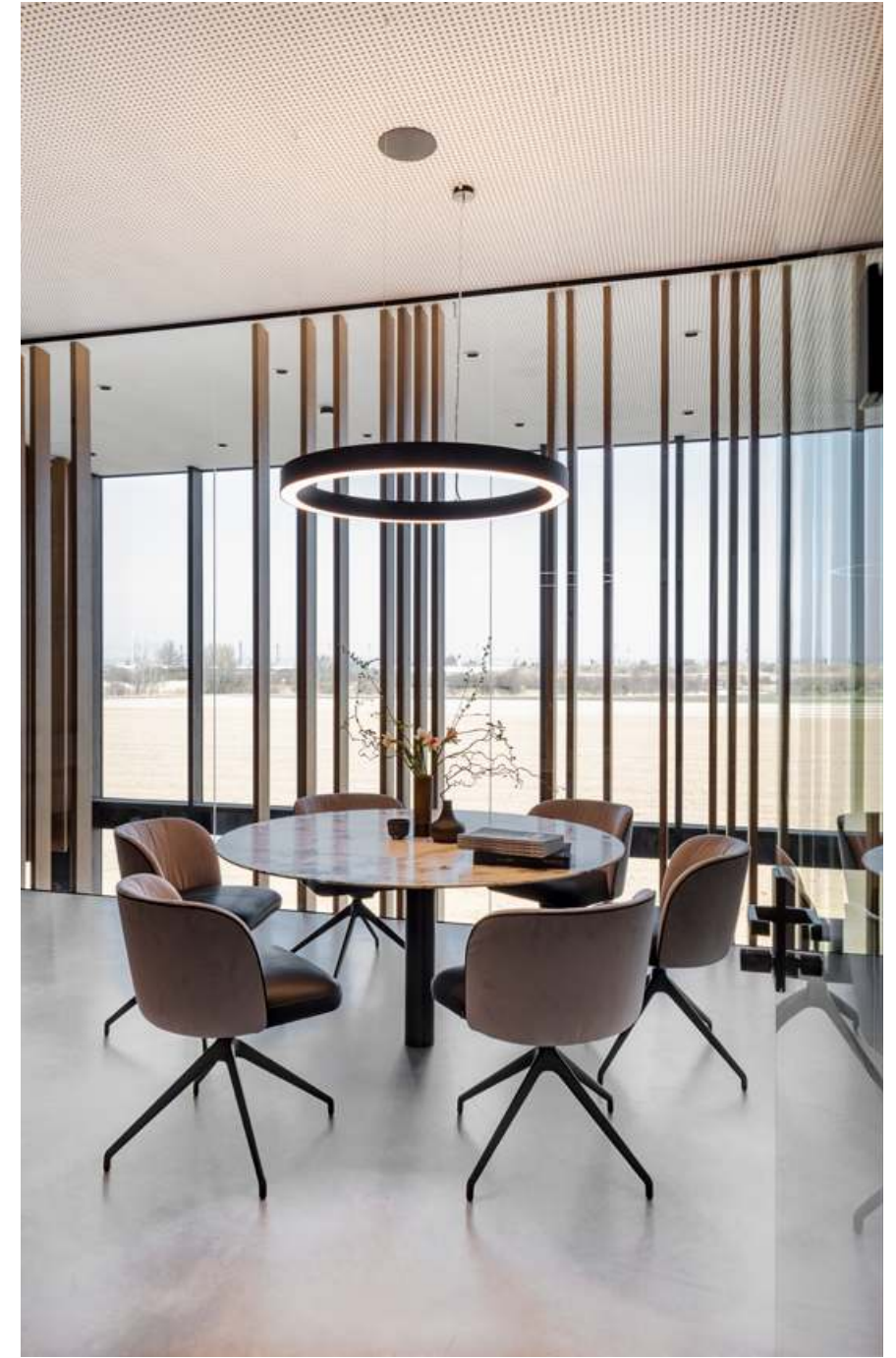
Category
Company Buildings

Judenu, Austria

Interior design, planning and execution
Mayr & Glatzl

Photography
Gabriel Büchelmeier







Building owners

»Our new company headquarters fits perfectly with the philosophy that we live by in our projects: we create lasting value with design standards, expertise and first-class quality.«

GAIA LINE chair
with 4-leg star frame SL

Backrest in fabric SEVEN lilac 70
Seat and piping in leather RAWHIDE black 356
Frame metal black mat structured M02

Category

Gastronomy, Hotel Restaurant

Bad Vilbel, Germany

Restaurant at Golfhotel Lindenhof

The Golfhotel Lindenhof combines sporting ambition and well-deserved relaxation in the midst of the hilly landscape of Donauwörth. In this exclusive ambience, the GAIA CASUAL counter chairs and LUNAR LIGHT chairs from KFF ensure maximum comfort. With their elegant design, they blend harmoniously into the modern interior and offer the perfect combination of aesthetics and functionality.

Photography

Sandra Burghausen / Nina Repp

GAIA CASUAL counter chair

with 4-leg tubular steel frame

Backrest and seat in fabric SEVEN copper 126
Frame metal black mat structured M02







LUNAR LIGHT chair
with 4-leg tubular steel frame

Backrest and seat in fabric SEVEN espresso 123
Frame metal moodgrey M16

GAIA DIVANO LOUNGE and GAIA DIVANO LOUNGE PICCOLO sofa easy chair

Backrest, seat and ottoman (right) in fabric
JAB SOUTH BEACH JA2104-030 /

Backrest and seat (left) in fabric JAB ENDLESS CA1695/034

Disc side table by ASCO

in ceramic white

Frame metal black mat structured M02

Category

Private properties

Photography

KFF | Anja Tischler



Color blocking in old buildings

GAIA LOUNGE easy chair
with 4-leg tubular steel frame

Backrest and seat in fabric CREDO aureo 2607
Frame metal black mat structured M02





ICON chair
with 4-leg tubular steel frame

Backrest and seat in leather SAUVAGE smaragd 8117
Frame metal black mat structured M02

Lamello round table by ASCO
in oak white, oiled
Frame metal old rose structured M26





Interior design
Katja Kessler

147

Workspace Heins arbeitet

Category
Public buildings

Bielefeld, Germany

Photography
KFF | Anja Tischler

In the H1 high-rise building in Bielefeld, the newly designed *Heins arbeitet* offers a modern and open office landscape that is designed for flexibility and dynamic working methods. The design of the space promotes transparency and communication, creating an environment that supports both the productivity and creativity of its users.

The swivel GAIA chair from KFF fits seamlessly into this innovative working environment. Equipped with an elegant 5-leg star frame SL with castors, the chair not only enables flexible mobility, but also offers a high level of ergonomic comfort. Its functional and stylish presence enriches the interior design and supports the concept of an adaptive and inspiring workplace.

The choice of the GAIA chair for *Heins arbeitet* underlines the company's commitment to providing first-class and functional office equipment that fulfills aesthetic demands while meeting today's requirements of modern working environments. The advanced technology and outstanding design of the GAIA make it an ideal component in the furnishing of future-oriented offices that value quality, comfort and design.



Discover project story
with video



GAIA chair
with 5-leg star frame SL with castors

Backrest and seat in customer fabric
Frame metal black mat structured M02



Category
Hotel business

Ulm and Berlin, Germany
Vienna, Austria

Motel One

Photography
Motel One and KFF | Anja Tischler



GAIA chair with armrests (7 back elements)

with 4-leg tubular steel frame

Backrest in fabric LISBOA Col.: 6 / PICASSO 5359 aubergine /

DANUBIO 1168 beige

Seat in leather SAUVAGE schlammgrau 8103

Frame metal macadamia structured M22



INNOVATIVE DESIGN IN A TOP LOCATION

GAIA LOUNGE easy chair

with 4-leg tubular steel frame

Backrest in fabric SEVEN copper 126

Seat in leather MILANO teak (custom color)

Frame metal black mat structured M02



Hotels sometimes need a makeover to look fresh and inviting. This is impressively demonstrated by the *Motel One* hotels in Vienna and Dresden, which impress both with their unique design and their central location. The *Motel One* Vienna Prater is inspired by the city's famous amusement district and embodies the colorful charm of the Prater with its numerous attractions.

The interior design of the hotel reflects the lively atmosphere of the amusement park and prepares guests for their exploration tour. With creative design elements representing the Prater, the reception area is transformed into a place that evokes both nostalgic memories and modern accents. Over a healthy organic breakfast, guests can enjoy the view of the magnificent lilac trees in the Prater as they prepare for an exciting day in the city. The *Motel One's* location at the Vienna Prater gives guests direct access to the attractions, especially the world-famous Giant Ferris Wheel. Vienna is home to the GAIA LOUNGE and LUNAR LIGHT models, both of which contribute to the inviting atmosphere. The design hotel not only stands out with its original design, but also offers the proven quality that characterizes the *Motel One* chain worldwide. It combines sophisticated design, qualified service staff and top locations in the most beautiful cities in Europe at an excellent

LUNAR LIGHT chair

with 4-leg tubular steel frame

Backrest in fabric SEVEN copper 126

Seat in leather MILANO teak (custom color)

Frame metal black mat structured M02



price-performance ratio. The combination of these elements makes the *Motel One* Wien-Prater an ideal retreat for travelers seeking both comfort and style.

Similarly, the *Motel One* Dresden impresses with a harmonious mix of modern design and functional furnishings. Different variants of the GAIA model family have been integrated there: from classic GAIA 4-legged chairs and GAIA LOUNGE easy chairs to the striking GAIA CALICE LOUNGE high-back chairs in different heights. This selection offers guests stylish seating options and perfectly complements the hotel's overall concept. KFF furniture will also be used in the *Motel One* hotels in Berlin and Ulm and soon in Düsseldorf.

The partnership between KFF and *Motel One* can thus be seen in various cities and underlines the high design quality of the entire hotel chain. Both hotels reflect *Motel One's* philosophy that a good hotel is more than just a place to stay - it is an experience

that appeals to the senses and invites you to linger. The use of KFF's thoughtful furniture designs supports *Motel One's* vision to create an aesthetic yet affordable hotel offering that meets the needs and exceeds the expectations of modern travelers. In these hotels, guests experience how well thought-out design and warm hospitality form a harmonious unit and merge into a unique hotel experience.

GAIA CALICE LOUNGE high-back easy chair
with 4-leg tubular steel frame

Backrest in fabric BOSTON trufa 5312
Seat in leather SILK dark brown 189
Frame in metal macadamia structured M22

GAIA CALICE LOUNGE (special edition medium high)
with 4-leg tubular steel frame

Backrest in fabric DANUBIO camel 1174
Seat in fabric SEVEN espresso 123
Frame in metal macadamia structured M22

GAIA LOUNGE easy chair
with 4-leg tubular steel frame

Backrest in fabric PICASSO aubergine 5359, SEVEN shitake 124
Seat in leather SILK dark brown 189
Frame metal macadamia structured M22



Photography
Roman Kupriyan, Andriy Bezuglov

Ort
Kiev, Ukraine

Restaurant MUST

Interior design
YOD Group

Category
Gastronomy, Restaurant

The premium steakhouse *MUST* in the center of Kiev is an outstanding example of modern restaurant design, which was realized by the renowned *design studio YOD* in collaboration with Architecture *Zotov & Co* under the direction of Victor Zotov. While *YOD* was responsible for the design decisions, *Zotov & Co* took care of the architectural planning.

The interior of the *MUST* embodies a contemporary style that stands out from classic steakhouses and at the same time does justice to the high premium level. The aim was not only to offer guests a first-class culinary experience, but

also to visually integrate the meat maturing and steak preparation processes into the design. A central part of the interior are the elegant LHASA chairs with armrests, as well as counter and bar stools from KFF, which create a harmonious connection to the modern aesthetics of the restaurant with their simple yet appealing design. This furniture not only provides comfort, but also contributes to the stylish atmosphere that offers guests an all-round appealing experience. The *MUST restaurant* is therefore not only a place for excellent steaks, but also a well thought-out concept that impressively combines design, functionality and enjoyment.





LHASA counter stool
with 4-leg square steel frame

Shell in fabric DIVA V2981
Seat cushion and piping in leather WILD ANILIN cognac 8000
Frame metal black mat structured M02





Schüttflix-Tower in Gütersloh

Interior design

Sebastian David Büscher

The new *Schüttflix Tower* is being built at the junction with Carl-Bertelsmann-Straße and forms the keystone of the Gleis 13 quarter, which consists of four buildings arranged parallel to the railway tracks and opposite Gütersloh main station. At this central interface between different urban areas and busy main roads, the *Schüttflix Tower* is positioned along several visual axes and serves as a striking landmark for the new urban quarter.

With its V-shaped structure, partially recessed first floor and six upper floors, the building is primarily designed as an office and administration building. A boarding house with 38 rooms is planned in the north-eastern sec-

Category

Company Buildings

tion. The modern GAIA LOUNGE easy chair, FAYE CASUAL chairs with armrests and GAIA LINE bar stool from KFF fit perfectly into the innovative concept of the *Schüttflix Tower*. Their timeless aesthetics and functionality complement the modern building and create an inviting atmosphere for employees and guests.

The combination of KFF and *Schüttflix* unites design with functionality and contributes to the creation of an inspiring working environment. The in-house bistro Cook & Chill is the ideal meeting place for *Schüttflix* employees to spend their breaks and sit comfortably on the LUNAR chair.

Photography

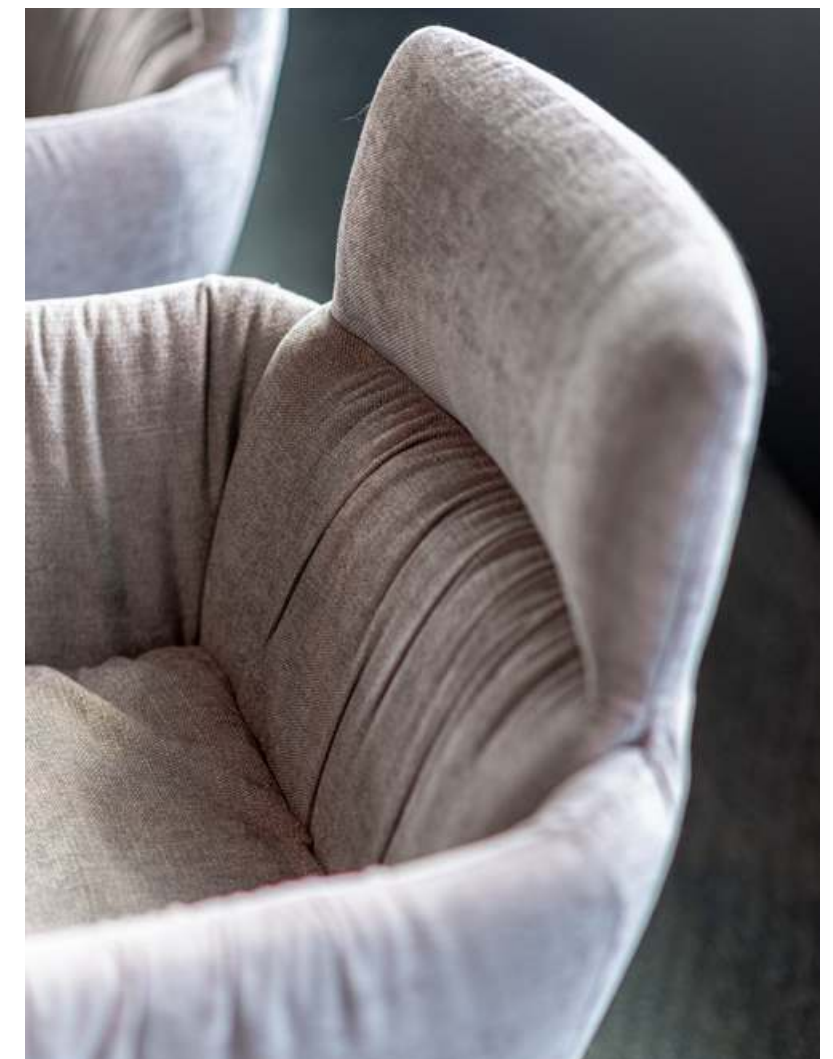
KFF | Anja Tischler





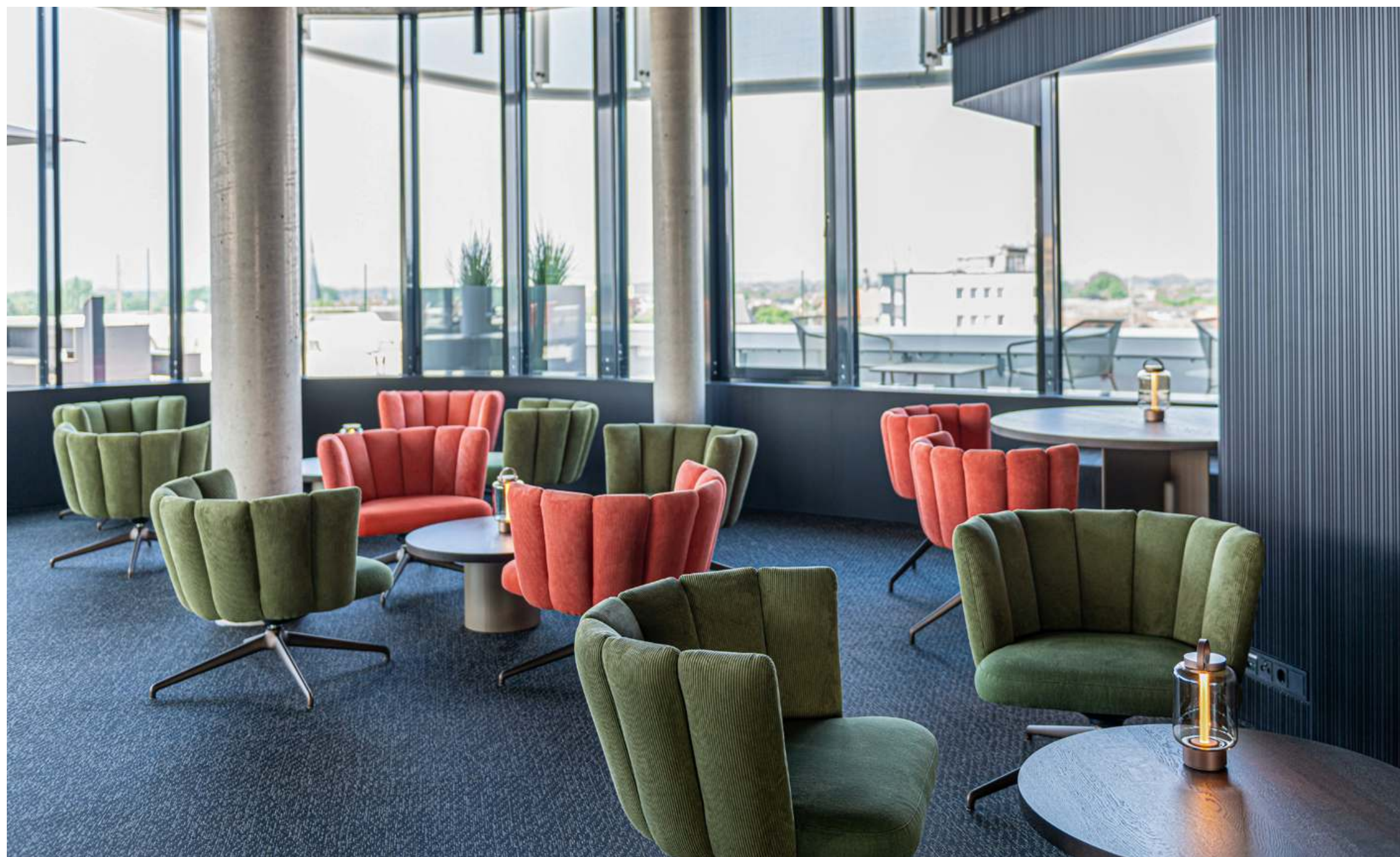
FAYE CASUAL chair with armrests
with 4-leg star frame SL

Shell and seat cushion in fabric DANUBIO trufa 1160
Frame metal macadamia structured M22



GAIA LOUNGE easy chair
with 4-leg star frame SL

Backrest in fabric LISBOA Col.: 24 / 11
Seat in fabric JAB HOT MADISON CH 1249/234 / CH 1249/521
Frame metal macadamia structured M22

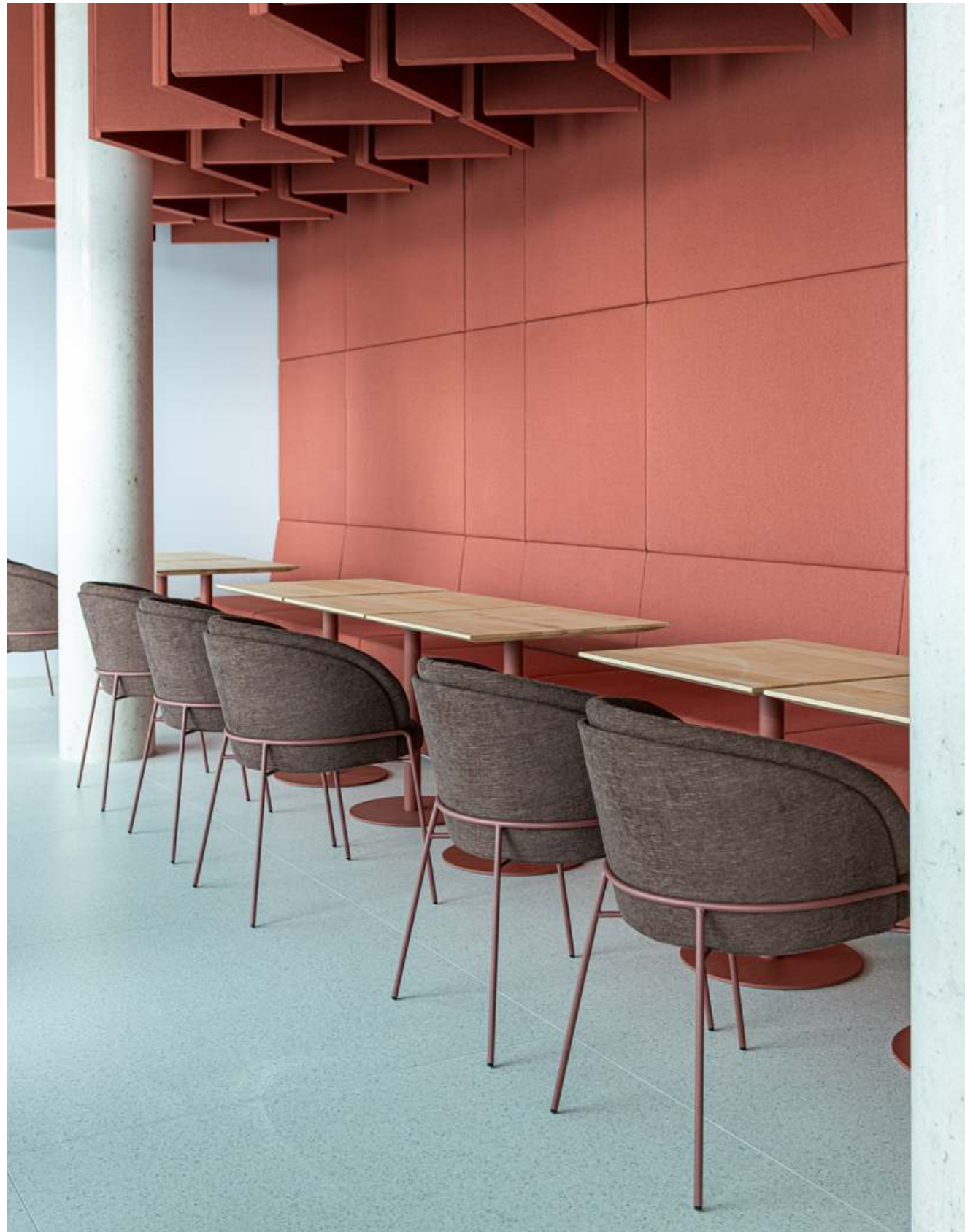


GAIA LINE bar stool
with column frame with round base

Backrest and seat in fabric JAB HOT MADISON CH 1249/521
Frame metal macadamia structured M22



Discover project story
with interview



LUNAR chair
with 4-leg tubular steel frame

Backrest, seat and backrest cushion in fabric DANUBIO moka 1177
Frame metal bordeaux structured M25



Hotel WunnersWat

Category

Hotel business, Gastronomy, Bar

Verl, Germany

Interior design

Kathrin Reinkemeier

Photography

KFF | Anja Tischler

WunnersWat, the name of the hotel means something very special in Low German - something unique. A place to enjoy, a place to meet and a place to fall in love with. A feel-good symbiosis with many special and loving details was at the forefront of the planning. Following the renovation, the hotel now offers 60 rooms - the old building, the new building and the listed building. The historic building has been carefully modernized and now houses the restaurant. The guest rooms, lobby and wellness area are located in the extension. The focal point is the bar, which flows seamlessly into the lounge area. Tradition and modernity come together in the architectural *WunnersWat*. Like a fine golden thread, the furnishing style and decoration run through all the rooms and weave themselves into a whole. Soft colors meet gold. Elegant black meets modern elements.



LHASA bar stool
with column frame with round base

Shell, seat cushion and piping in leather DAKOTA black 6008
Frame metal black mat structured M02



ARVA LOUNGE easy chair
with 4-leg star frame

Shell (with armrests) and seat cushion in leather RAWHIDE dawn 352
Frame metal black | moodblack M01



Loxone Campus at Mühlviertel

Category
Public buildings

Photography
Loxone Campus

Kollerschlag, Austria



The idyllic village of Kollerschlag, surrounded by green hills and forests, lies in the middle of the wild and romantic landscape of the Austrian Mühlviertel. This backdrop invites you to enjoy the peace and beauty of the surroundings, but Kollerschlag is also home to the *Loxone Group*, one of the fastest growing companies in the field of home and building automation.



ARVA LIGHT chair and bar stool (special edition)

with wire skid frame (bar stool with cross bar)

Shell outside and inside in fabric BOSTON light grey 5320
Frame metal black mat structured M02

X-ACT (following page)

with wire skid frame (stackable)

Shell outside and inside in fabric BOSTON light grey 5320
Frame metal black mat structured M02

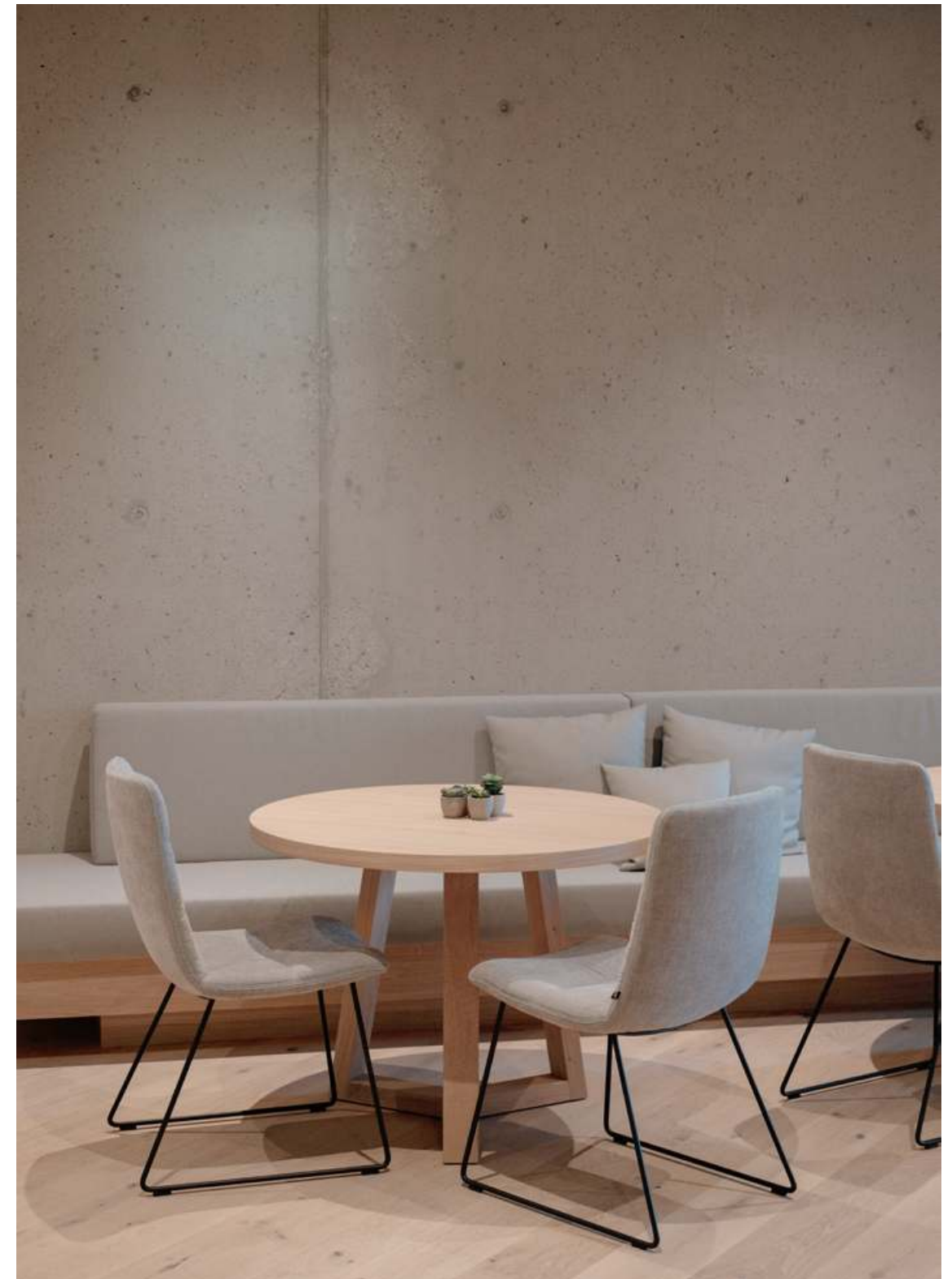
STATE-OF-THE-ART BUILDING TECHNOLOGY MEETS MID-CENTURY DESIGN

At the heart of the *Loxone Campus*, which combines innovation and nature, you will find state-of-the-art technologies and the ARVA LIGHT in two different versions. The *Loxone Campus* was created in 2018 in response to the need for workers and training facilities as well as the need to accommodate guests appropriately.

Here, modern workplaces, seminar rooms and excellent gastronomy are combined with a relaxing wellness area and first-class hotel rooms in a breathtaking landscape. With its elegant design and maximum seating

comfort, the ARVA LIGHT chair embodies the essence of the modern lifestyle. With its cozy ergonomics, the ARVA LIGHT bar stool invites you to enjoy communicative moments.

Welcome to the *Loxone Campus*, where ARVA LIGHT by KFF combines elegance and functionality and invites visitors to become part of an inspiring vision. As an expert in custom-made products, KFF also incorporated the significant X in the company name into the stitching of the backrest upholstery at *Loxone's* request, creating a subtle contribution to the company's corporate identity.





✿✿ Awarded with 2 Michelin stars

Speisemeisterei at Castle Hohenheim

Category
Gastronomy, Restaurant

Stuttgart, Germany

Photography
KFF | Anja Tischler





FAYE chair with armrests
with wire skid frame

189

Shell and seat cushion in fabric SEVEN saffron 183 / grey 65
Frame metal black mat structure M02

SITTING PLEASURE IN THE BAROQUE CASTLE

A place that has breathed the elegance of bygone eras throughout the centuries rises majestically at the gates of Stuttgart: Hohenheim Castle. Built between 1772 and 1793, today it is best known as the home of the University of Hohenheim, nestled in the enchanting Hohenheim Gardens. Friedrich Schiller himself, inspired by the English landscape architecture of the park, described the beauty of the palace with the words: »But the nature we find in this English garden is no longer the one we started from. It is nature animated with spirit and exalted by art.«

In the middle of this historic setting, in the castle's Kavaliersbau, there is a place that combines the tradition of the palace with a modern and exquisite gastronomic experience: the *Speisemeisterei*. Originally set up as a canteen, it has shone as a restaurant since 1985, following the concept of a one-menu concept with six or seven courses, even catering for special diets on request. Vegetarians are welcome by prior arrangement!

The FAYE chair with armrests from KFF fits seamlessly into this environment. The baroque feel of the comfortable chair, which is even more apparent in the baroque palace, and the simultaneously understated simplicity of the smooth upholstery create an aesthetic of harmony. Designed with an eye for clear lines and subtle details, harmony and elegance merge in the FAYE - just like in Stefan Gschwendt-

ner's kitchen philosophy. The careful upholstery of the FAYE offers maximum comfort for the discerning guest, while the design forms an aesthetic symbiosis with the opulent ambience of the castle.

The ambience of the *Speisemeisterei* is characterized by an exciting contrast: the lounge-like furnishings meet the luxurious baroque style of the castle. A visit to the *Speisemeisterei* promises not only culinary highlights, but also a journey through the history of the castle, the region and the senses in general. It is not for nothing that the *Speisemeisterei* is considered the best restaurant in the state capital of Baden-Württemberg.



The heart of the *Speisemeisterei* is undoubtedly head chef Stefan Gschwendtner. Working in the restaurant since 2008 and head chef since 2016, he has developed a style that is both refined and accessible.



Interior design
brüderl.

Allianz Arena BayWa-Lodges

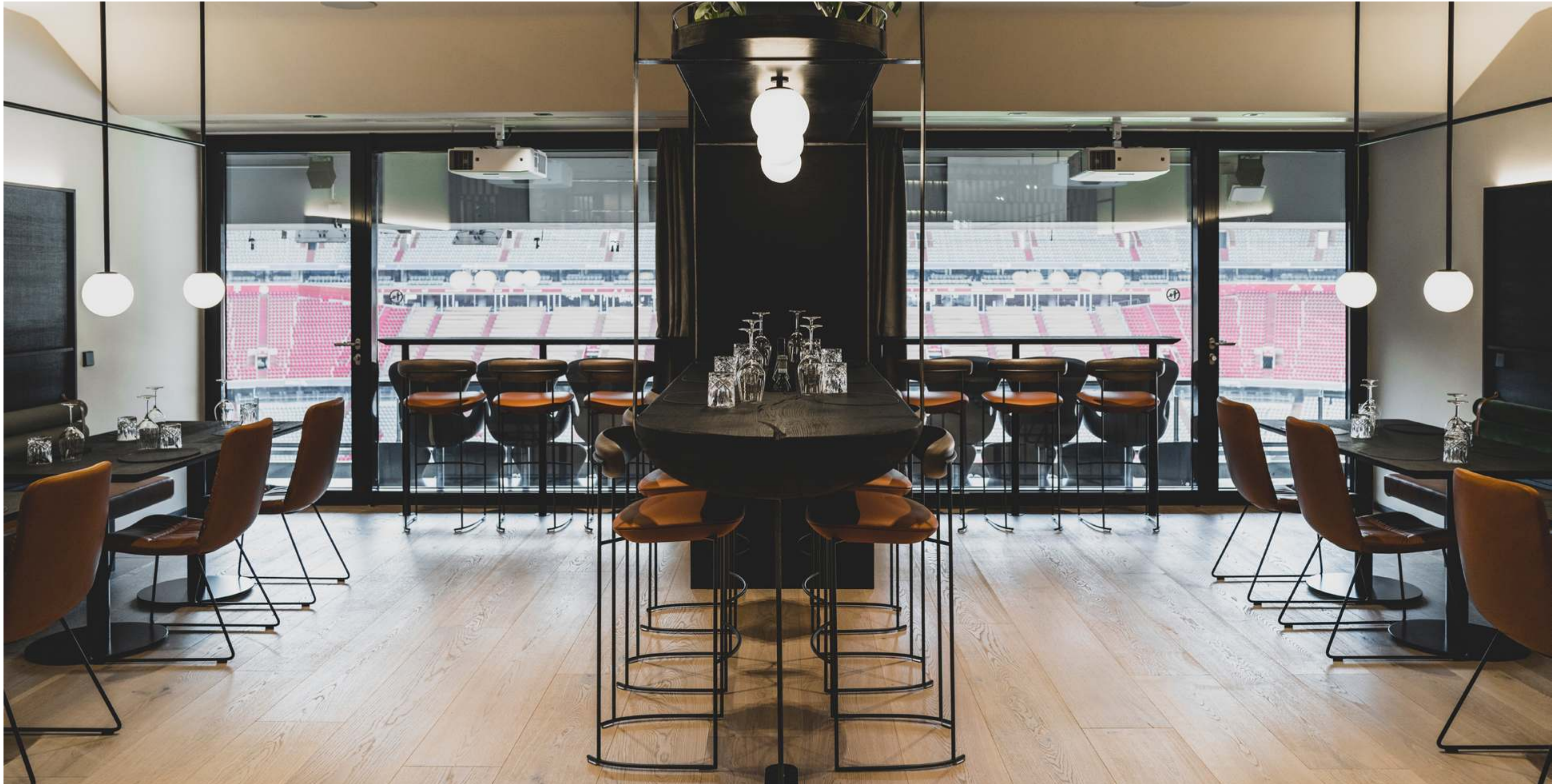
In Munich's Allianz Arena, the boxes redesigned by *brüderl.* represent entrepreneurial success with a connection to the spirit of sport. The redesigned *BayWa Lodge* reflects values such as solidity, innovation and a connection to nature. Sophisticated visual axes and spatial zones, combined with specially designed lighting elements and exquisite materials such as oak, stone, steel, leather and velvet, characterize the space. The design highlights include a construction girder converted into an elegant bar with integrated library, a bar table made from a special oak trunk and custom-made backrests made from green leather, which artistically showcase the company logo.

The dining areas were furnished with the ARVA LIGHT chair from KFF, which blends seamlessly into the high-quality interior and offers comfort and elegance. This project illustrates how precise planning and creative design can create a sophisticated and inviting ambience that perfectly reflects a company's identity and values.

Category
Public buildings

Munich, Germany





ARVA LIGHT chair
with wire skid frame

Shell outside and inside in leather SAUVAGE tobacco 8108
Frame metal black | moodblack M01



BRÜDERL.

brüderl. stands for family tradition and innovative strength, founded in 1949 by Georg Brüderl senior as a construction and furniture joinery. Today, Schorsch Brüderl and his sons Georg and Benedikt run the company with a clear vision: to offer all services from a single source. This strategy has made Brüderl. not only a holistic but also a successful family business. The deep roots give the team the strength to dare to try new things and to take individual paths off the beaten track.



Apartment in an old building in Vienna

Design office
Mayr & Glatzl

Photography
Gabriel Buechelmeier

Category
Private properties

GAIA chair with armrests (7 back elements)
with 4-leg tubular steel frame

Backrest and seat in leather SILK merlot 183
Frame metal black mat structured M02

YOUMA CASUAL chair with armrests
with wire skid frame

Shell outside and inside in leather WILD ANILIN
stone grey 8007
Seat cushion in fabric MASTIFF stone grey 20
Frame metal black mat structured M02



ARVA counter chair
with wire skid frame with cross bar

Shell in fabric STEELCUT TRIO 3 Nr. 133
Seat cushion in leather SAUVAGE black 8105
Frame metal black mat structured M02

Vienna is and always has been a center of international design. The Viennese also have an affinity for design in their private lives: the carefully curated art collection of the owner of a light-flooded apartment in an old building in the heart of Vienna finds its perfect setting here. The high-quality interior, characterized by a reduced colour palette and fine textiles, creates a calm, elegant atmosphere. From the curtains to the bed linen, the finest materials are used to give the room a feeling of security. In the midst of this stylish ambience, pieces of furniture from KFF set striking accents. GAIA chairs with armrests and ARVA counter stools blend effortlessly into the overall picture, while the YOUMA CASUAL chair with armrests is a highlight thanks to its blend of comfort and timeless design.

These design classics not only complement the aesthetic concept, but also ensure optimum seating comfort in the rooms. Visual axes that skillfully showcase the exhibits and hand-picked lighting solutions underline the homely yet artistic atmosphere. Despite their gallery character, the rooms radiate warmth and comfort - a perfect interplay of art and design in which the furniture from KFF plays a central role.

YOUMA CASUAL chair with armrests

with wire skid frame

Shell outside and inside in leather WILD ANILIN stone grey 8007

Seat cushion in fabric MASTIFF stone grey 20

Frame metal black mat structured M02





Category
Hotel business

Kitzbühel, Austria

Hotel Tiefenbrunner

Design office
TO Interior design

Photography
Peter Straub



GAIA chair (5 back elements)
with tubular steel skid frame

Backrest and seat in leather
VINTAGE black 1901
Frame metal black mat structured M02



MARKUS AND THERESA OBERMOSER

In recent years, the Obermoser siblings have had the opportunity to explore new concepts and long-planned projects close to their hearts. With the takeover of the Hotel Tiefenbrunner, Markus Obermoser has brought a breath of fresh air into the family business and asked his sister, interior designer Theresa Obermoser, for support with the new design of the lobby and restaurant area. Theresa works internationally with her company TO Interior design and is characterized by her casually elegant style.

It was important to her to give the traditional hotel a new touch, with the history of the hotel taking center stage. The Hotel Tiefenbrunner, part of the Kitzbühel city wall and family-owned for 210 years, combines local materials with the original stone walls. Portraits of ancestors occupy a special place under the restaurant's canopy of lamps, with the elegant GAIA chair underneath. The contemporary design with earthy tones and textures creates an inviting atmosphere.



GAIA LINE easy chair
with 4-leg tubular steel frame

Backrest in fabric BOSTON black 5318 / ash 5319
Seat and piping in leather MILANO black 260
Frame metal black mat structured M02

Category
Public buildings

Photography
knoblauch.eu / ©Ben Decker

Zeppelin Museum Friedrichshafen

What an impressive moment it must have been when the first zeppelins took off majestically and revolutionized the world of aviation. At the *Zeppelin Museum* in Friedrichshafen, you can experience this fascinating history of innovation up close. The pioneering spirit of Count Ferdinand von Zeppelin, which became a reality in his airships, is symbolic of the courage to realize visions and continuously improve - a philosophy that is also lived at KFF, where past and future merge in an exciting way: In addition to historical aviation, changing special exhibitions are dedicated to visionary ideas of tomorrow.

NEST PURE LOUNGE and GAIA LINE LOUNGE also find their place in this creative environment. They stand for the same innovative spirit with which we develop designs - always with the aim of creating something new that is not only aesthetically pleasing, but also offers maximum functionality. Just as Count Zeppelin once revolutionized aviation, KFF strives to get the best out of every design through constant further development. Whether a visionary mind designs a Zeppelin or a NEST PURE LOUNGE easy chair, it is the joy of design that unites us. Visitors to the *Zeppelin Museum* can feel this connection - a place where past and future meet, as do technological innovation and excellent design.





NEST PURE LOUNGE easy chair
with wire cross frame

Shell in shaped fleece anthracite / grey
Cushion in fabric BOSTON turquoise 5316 / ocean 5217
and DANUBIO dark grey 1179
Frame metal black mat structured M02

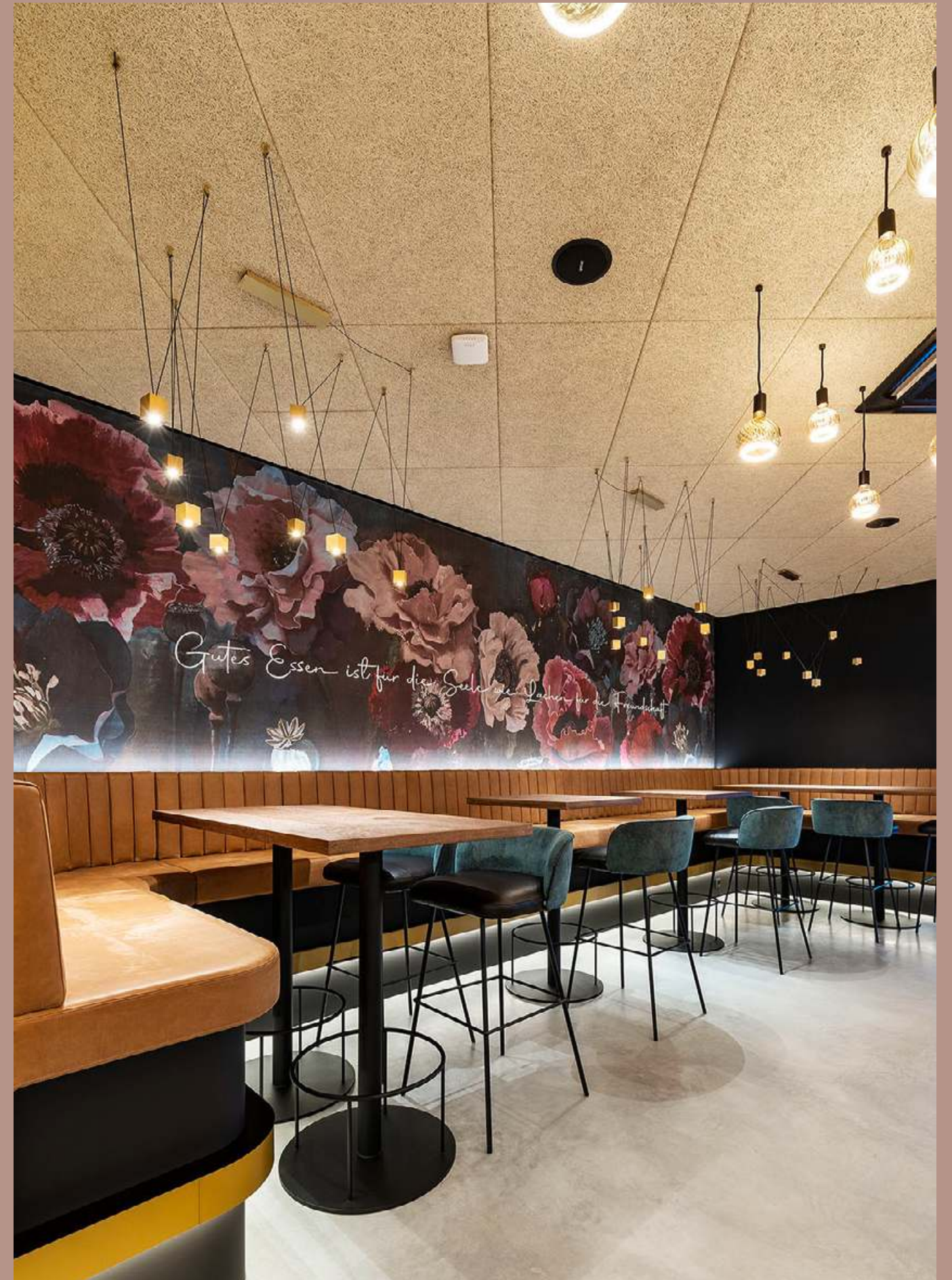


Category
Gastronomy, Restaurant

Friedrichshafen, Germany

Lukullum

Photography
Jens Pfisterer

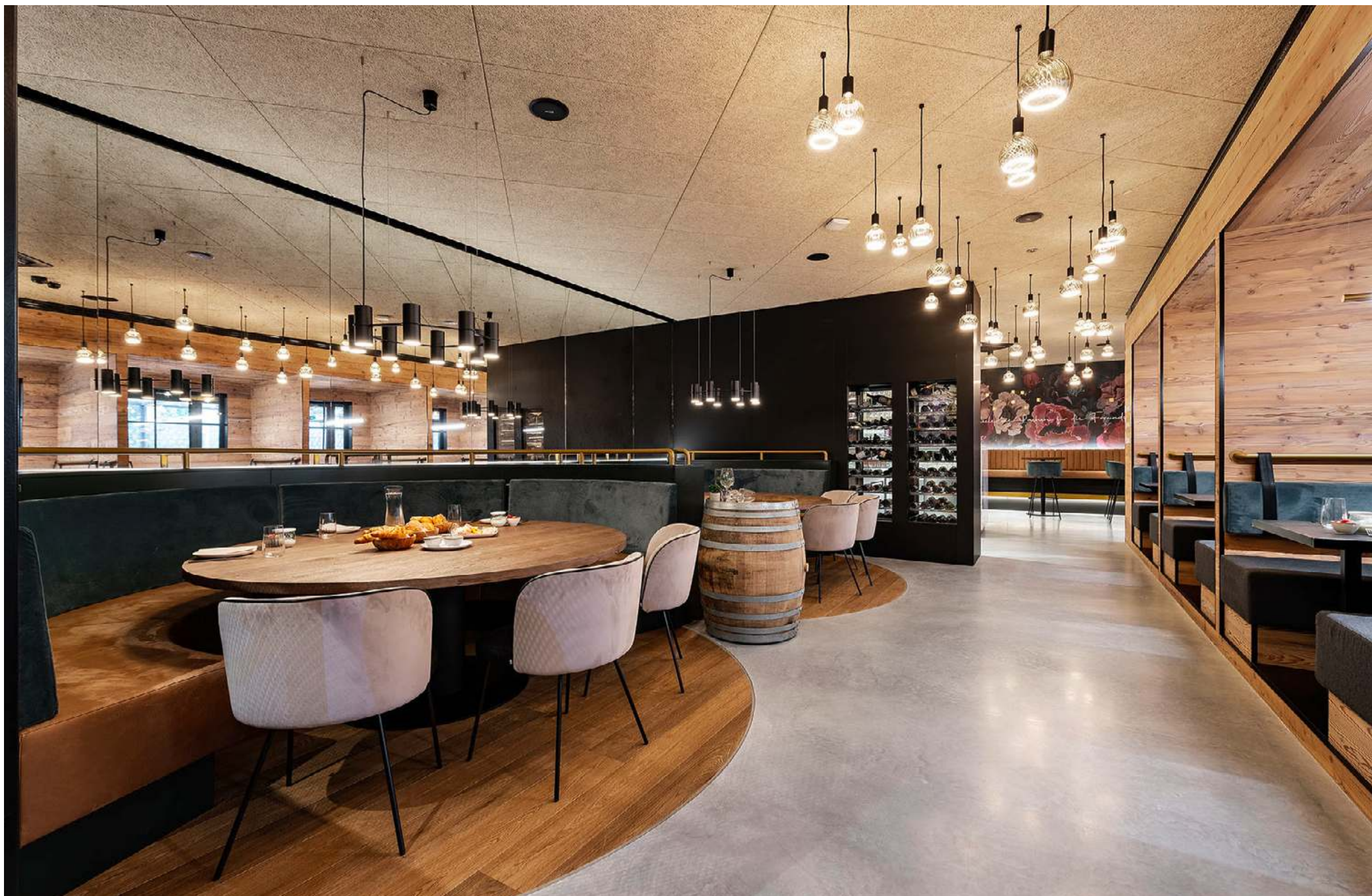


GAIA LINE counter stool
mit 4-Fuß-Rundrohrgestell

Backrest in fabric LISBOA Col.: 31
Seat and piping in leather DAKOTA black 6008
Frame metal black mat structured M02







GAIA LINE chair
with 4-leg tubular steel frame

Backrest in fabric SEVEN steel 149
Seat and piping in leather DAKOTA black 6008
Frame metal black mat structured M02



GAIA chair with armrests (7 back elements)
with 4-leg tubular steel frame

Backrest in fabric LISBOA Col.: 1 / 2 / 7 / 21 / 24
Seat in leather SILK smoke 185 / merlot 183
Frame metal black mat structured M02

Photography

Roswitha Schneider

Holzgauer Haus

Reinterpreting the tried and tested – this is exactly what the young owner, designer and landlady Christine Bechter has set out to do. With great sensitivity, she has preserved the atmosphere and charm of the old house and created something new with design and comfort. The origins of the old building are uniquely shaped by knitting and preserved beams, while the open roof truss, old floorboards and paneling set accents.

New, impressive windows open up views of the outdoors and bring them inside unobstructed. Here you can just sit and be - on GAIA chairs with armrests and bar stools. In the new time-out lofts, guests are surprised by the warmth of wood, design and comfort, with the 150-year-old Holzgau stove right in the middle of the action. The landlady also cooks on this jewel herself.

Category
Hotel business

Lechleiten, Austria

GAIA bar chair (7 back elements)
with 4-leg tubular steel frame

Backrest in fabric LISBOA Col.: 7
Seat cushion in leather SILK merlot 183
Frame metal black mat structured M02



GAIA chair with armrests (7 back elements)
with 4-leg tubular steel frame

Backrest in fabric LISBOA Col.: 24
Seat in leather SAUVAGE black
Frame metal black | moodblack M01



Office space for human unlimited

The young »purpose company« *human unlimited* sees itself as the creative answer to traditional management consultancies. »The purpose of this company is to give companies purpose, because nothing is more effective. God is a creative. Not a controller. Creation means bringing something new of value into our world. That's the idea.« says *Frank Dopheide*, the founder of *hu*.

200 square meters for *human unlimited* in Düsseldorf's Medienhafen, under the direction of owner *Claudia de Bruyn*, had to be designed with this in mind, with a strong sense of identity and meaning for meetings and retreats alike. An unusual color concept with a high recall value was created for this, which builds on a central design idea, the corporate design of *human unlimited*: The word »human« is shown graphically in striking black on white. This clear statement is complemented by the word »unlimited«, which, like a chameleon, can take on all the colors of the color wheel, corresponding to the corporate design hue of »human«.

Photography
Peter Kalte Düsseldorf

ARVA LOUNGE easy chair
with wire skid frame

Shell with armrests and seat cushion in customer fabric
Frame in RAL 1018

Category
Company Buildings

Düsseldorf, Germany





human
on 1100

ARVA chair
with wire skid frame

Shell and seat cushion in customer fabric
Frame in RAL 1018 / 9016



CLAUDIA DE BRUYN

Claudia de Bruyn's projects are the result of a holistic approach to space and its interdisciplinary design issues. Influenced by her studies in architecture and interior design, she develops sustainable future scenarios, focusing equally on the creation of stimulating and independent living spaces as well as the development of innovative products, and has received various design and architecture awards for her designs, such as the Design Award of the Federal Republic of Germany in Gold or the Insider Award 2010 for outstanding achievements in interior design and her life's work to date.

GAIA LINE chair
with 4-leg star frame SL

Backrest in fabric SEVEN eucalyptus 193
Seat and piping in leather BELO nero 1601
Frame metal black mat structured M02

Lamello table by ASCO
in black walnut, oiled

Anumar

Category
Company Buildings

Ingolstadt, Germany

Photography
Anumar





GAIA LINE bar stool
with 4-leg tubular steel frame

Backrest in fabric LISBOA Col.: 32
Seat and piping in leather BELO nero 1601
Frame metal black mat structured M02



GAIA LINE LOUNGE easy chair
with 4-leg star frame SL

Backrest in fabric LISBOA Col.: 23
Seat and piping in leather BELO nero 1601



Tranquil ambience in minimalist luxury

Photography

Anthony Trabano - Studio Santa Cruz



ALVARO chair

with 4-leg tubular steel frame

Backrest and seat in fabric DANUBIO trufa 1160

Frame metal black mat structured M02

Category

Private properties





Japanese Restaurant Akaiten

GAIA LINE chair
with 4-leg tubular steel frame

Backrest in fabric LISBOA Col.: 15
Seat and piping in leather VINTAGE
black 1901
Frame metal black mat structured M02

Design office
FORMWAENDE

Photography
linea_weiss | Victoria Birgel



LUNAR PURE chair

with 4-leg tubular steel frame

Backrest in shaped fleece anthracite

Backrest cushion in fabric BOSTON water green 5321

Seat in leather VINTAGE black 1901

Frame metal black mat structured M02

JAPANESE FINE DINING MEETS EAST WESTPHALIAN DESIGN

The Japanese restaurant *Akaiten* in the Lippischer Hof, located in the spa and thermal health resort of Bad Salz-
uflen, offers Japanese fine dining at the highest level of taste and craftsmanship. The *FORMWAENDE* design office has reinterpreted Japanese Art Deco on 180m² with deliberately reduced forms and clear geometric lines.

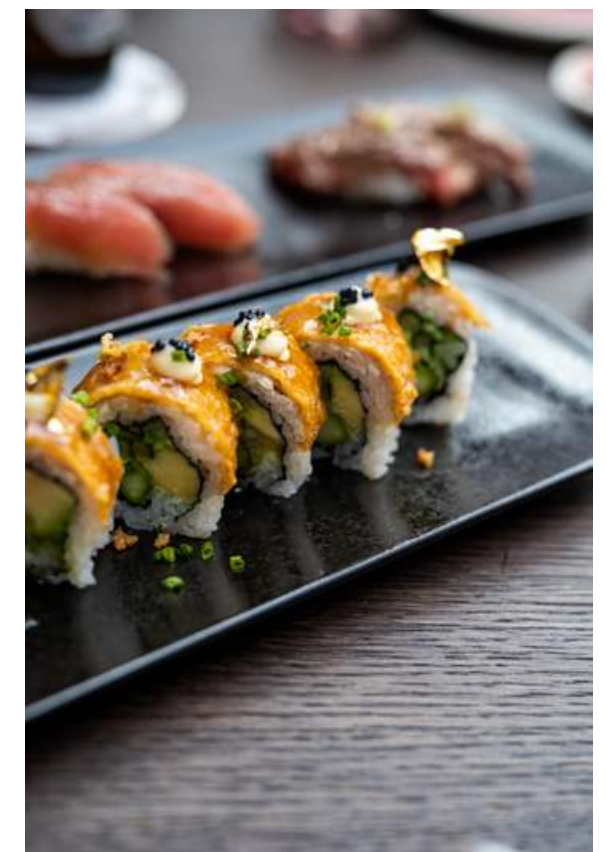
The large street art graffiti on the walls contrasts with this, while the elegant lighting concept, paired with the highest quality materials, lends the rooms a special flair. Cool stone and tiled surfaces meet warm wood and soft upholstery, dark fixtures meet light ceilings that open the low room upwards. Semi-transparent sculptural metal elements lend the concept an elegant touch, while the choice of colors for the materials and surfaces used blends in with the different areas of the hotel. Dark purple and rich berry red contrast with sober shades of gray and black.

Comfortable seating furniture such as the LUNAR PURE and the GAIA LINE, raised seating positions on pedestals and benches at standing height offer the right seating for every taste. The focus is on the sushi counter with its fully equipped kitchen, which can be seen from almost anywhere in the restaurant. Directly adjacent seats also provide an insight into the work of the sushi masters.

Category

Gastronomy, Restaurant

Bad Salzufflen, Germany

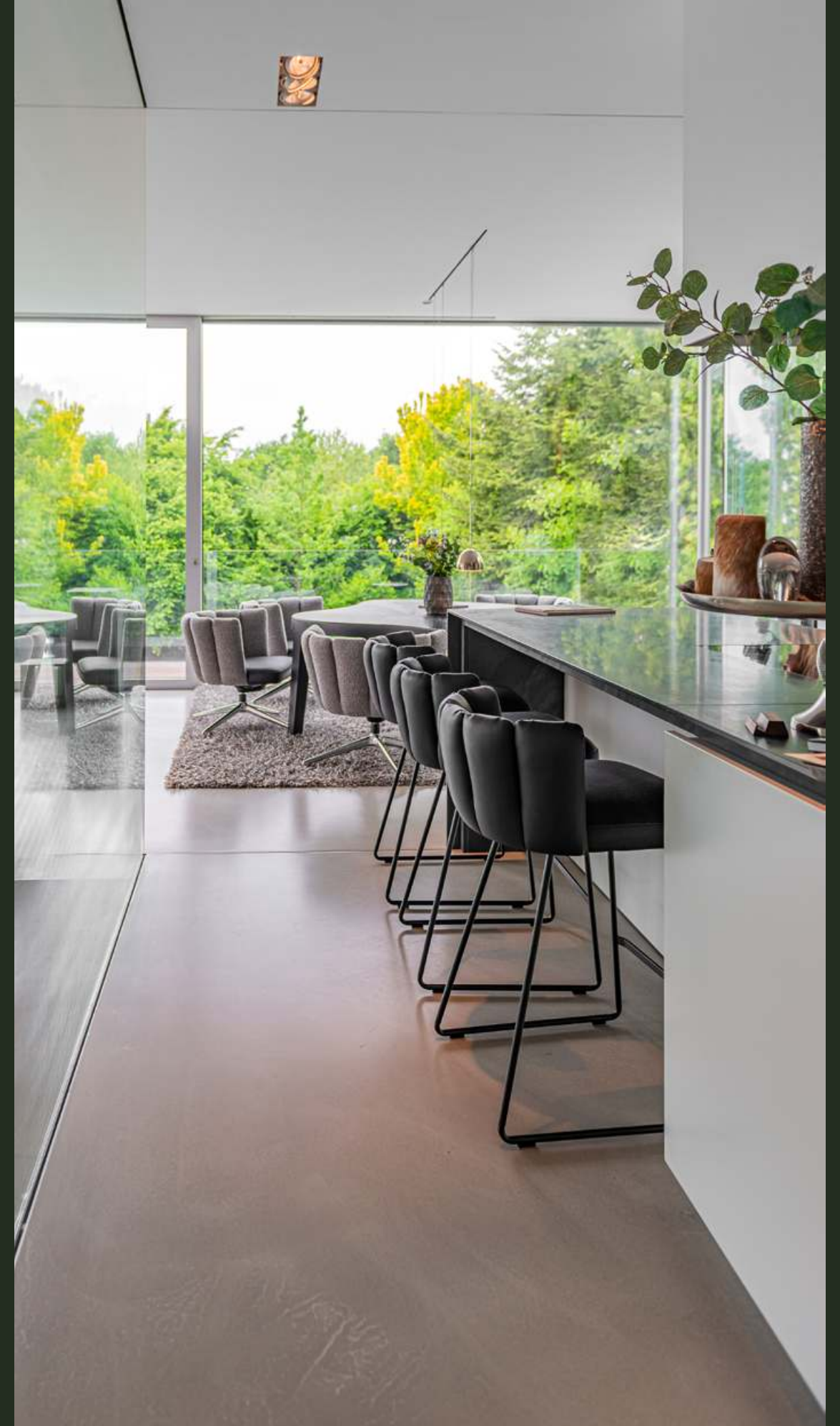




High and low dining at home

In an impressive private residential project, the GAIA Low Dining chair with armrests from KFF is the perfect addition to a stylish yet functional interior design. The special architecture of the house, characterized by clear lines and spacious rooms, harmonizes ideally with the elegant design of the chair with armrests. Above all, the individually adjustable seat height of the GAIA LOUNGE easy chair offers a unique seating experience that creates a communicative atmosphere around the table - a central meeting place for family and guests.

The special feature of the low seat height is not only the comfort, but also the relaxed, open posture that it promotes. The innovative swivel function also ensures freedom of movement without sacrificing elegance. The flexibility that KFF enables with its individual adjustments further highlights the GAIA LOUNGE easy chair in the low dining height: »We were able to flexibly adjust the seat height, which makes it absolutely hassle-free to spend the whole evening at the table,« explains the owner. This versatility not only meets functional needs, but also adapts perfectly to the residents' personal lifestyles.





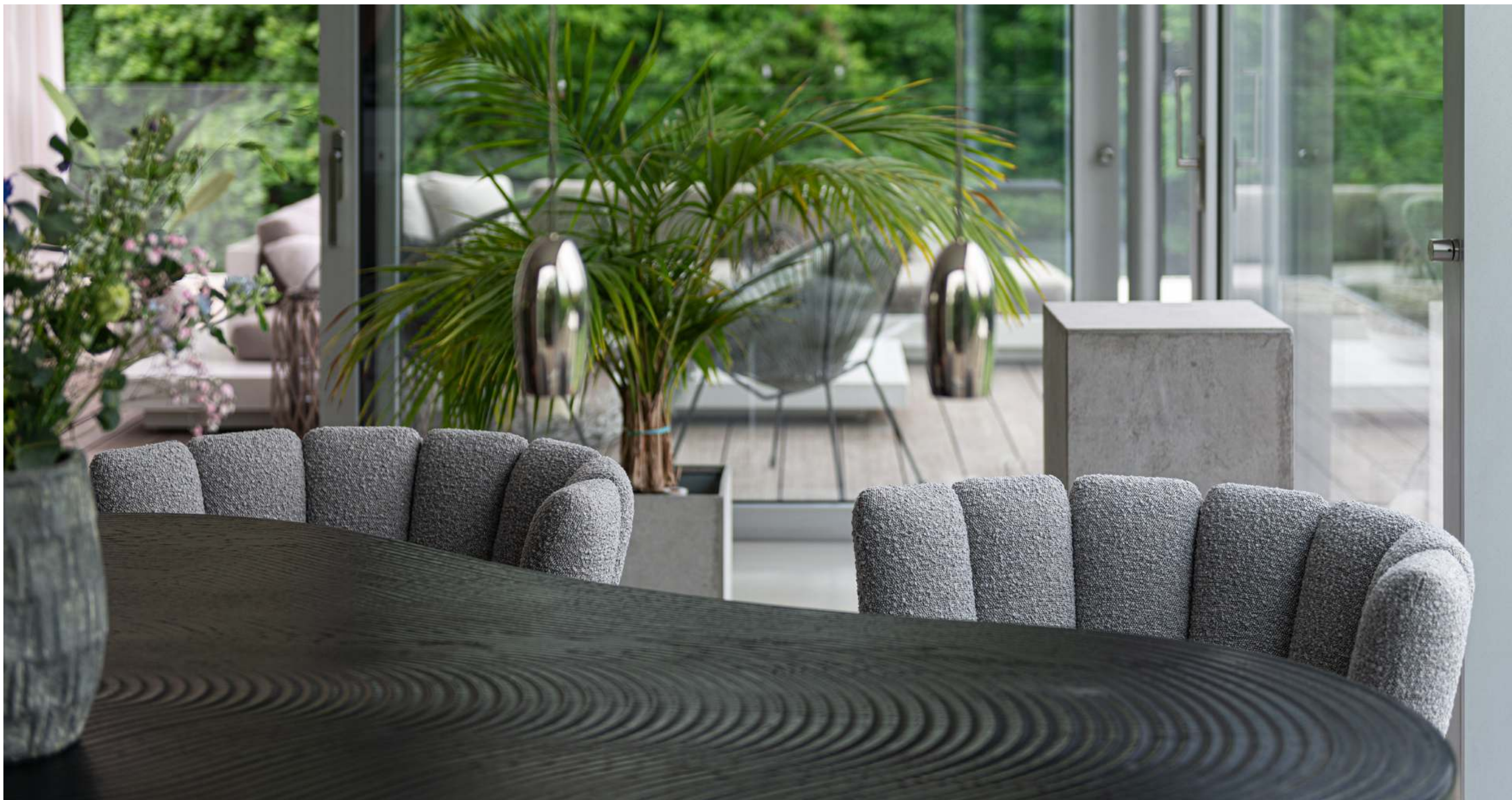
The choice of materials - a combination of high-quality fabric and leather - gives the chairs an exclusive touch. The airy design creates lightness in the room, while the careful upholstery offers maximum comfort. »It's simply pleasant to sit here and enjoy the time. The chair really is a dream«. Thanks to its flexibility and sophisticated design, KFF's GAIA LOUNGE easy chair, with its individually adjustable seat height, enables versatile use in modern living environments, where the dining area becomes the heart of the home. This shows once again that KFF not only designs furniture, but also creates living spaces. KFF is also happy to implement personal customer wishes in private properties.

GAIA LOUNGE easy chair
with 4-leg star frame SL (special height)

Backrest in fabric ASCOT taupe 2403
Seat in leather SAUVAGE black 8105
Frame metall aluminium polished M13

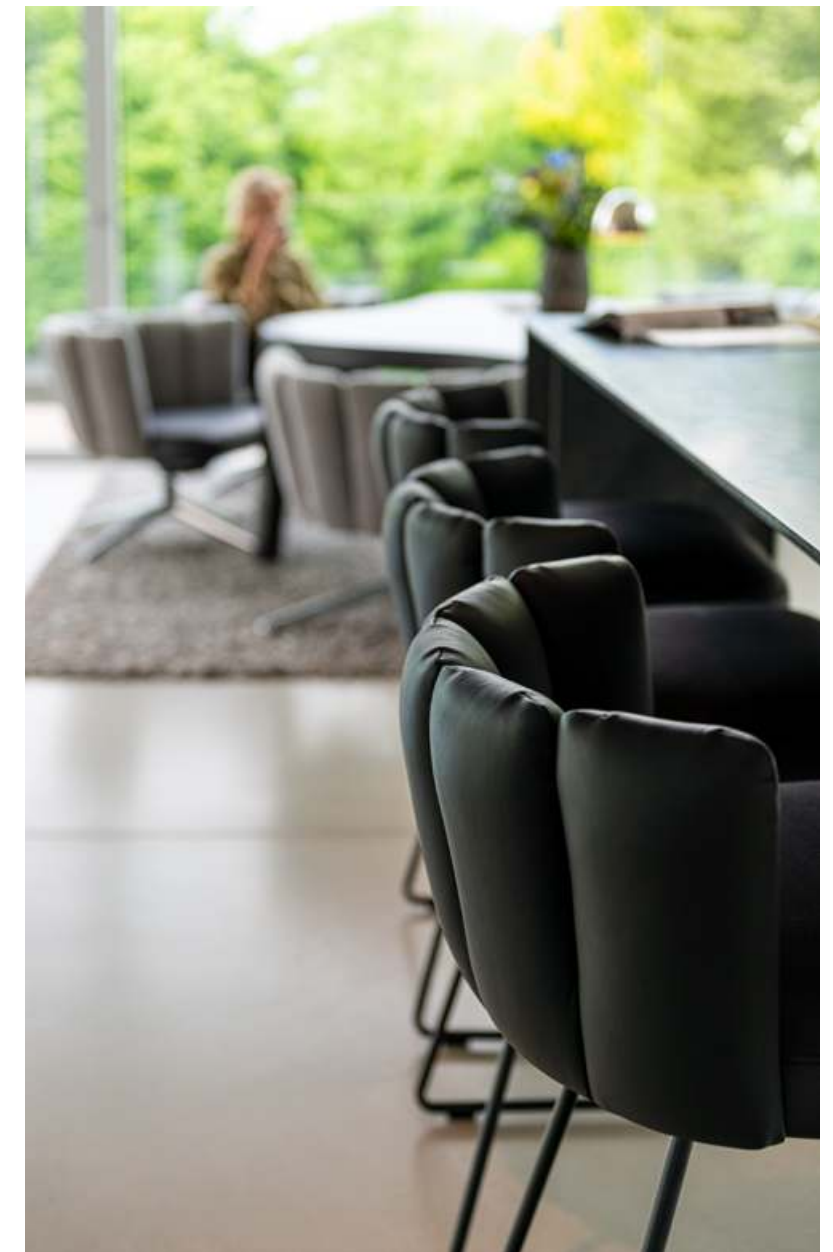


Discover project story
GAIA LOUNGE in Low Dining height



GAIA counter stool (5 back elements)
with wire skid frame

Backrest and seat in leather SAUVAGE black 8105
Frame metal black mat structured M02



Owner

»It was important for us to have a chair that we could not only eat on, but also spend the whole evening on. The GAIA LOW DINING from KFF meets all our requirements – comfortable, flexible and simply perfect for long, sociable evenings.«

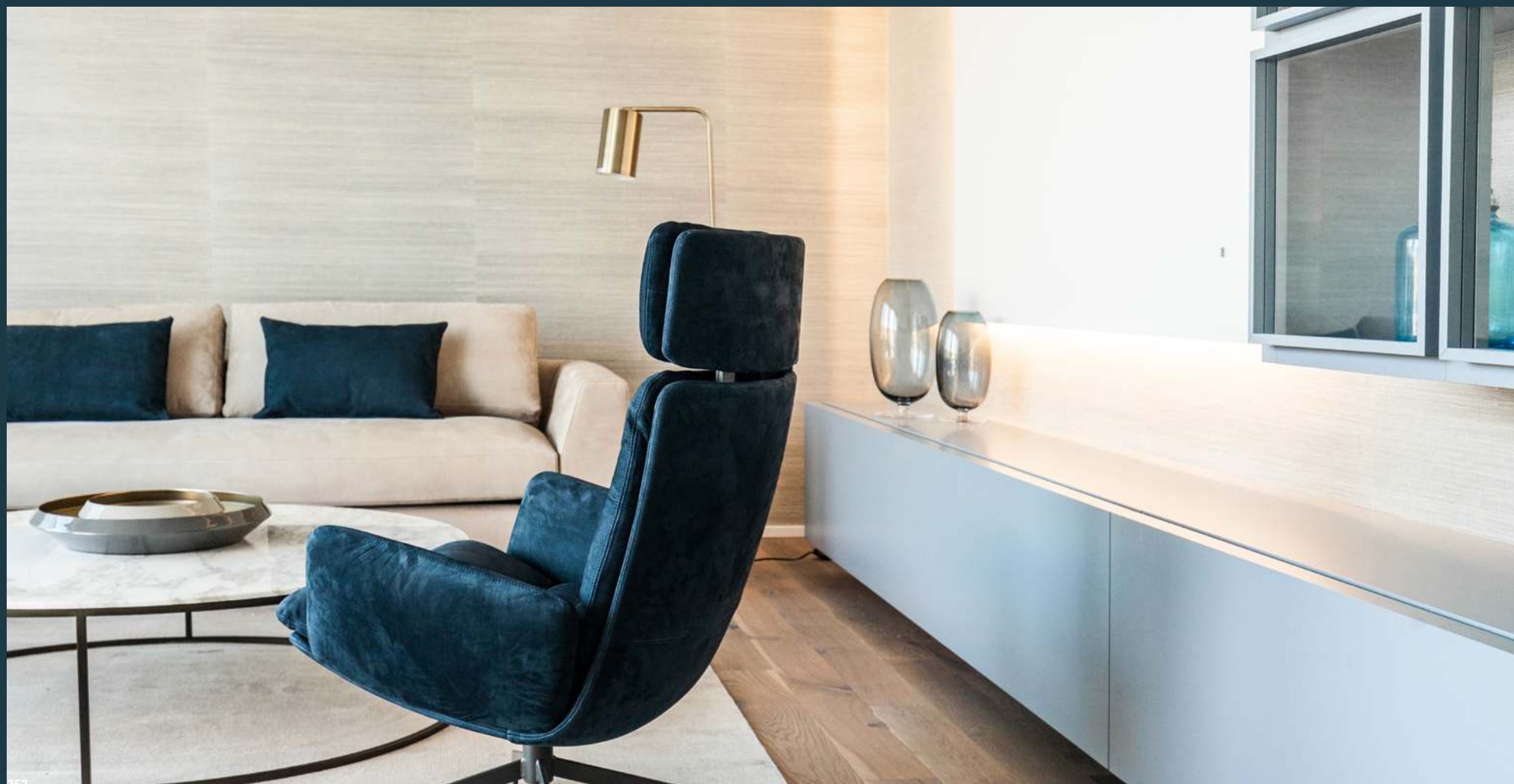
Hotel Hermitage Vital Resort

Interior design and furnishings
Marcel Eberharter

Category
Hotel business

Photography
Eberharter GmbH

Wörthersee, Kärnten, Austria



ARVA LOUNGE easy chair
with 4-leg star frame

Shell with armrests and seat cushion in
customer fabric
Frame metall moodgrey M16



YOUMA CASUAL chair with armrests
with wire skid frame

Shell outside and inside and seat cushion in customer fabric
Frame metall moodgrey M16



Quickfinder



	Page	ALVARO	ARVA	ARVA LIGHT	FAYE	FAYE CASUAL	GAIA	GAIA LINE	ICON	LHASA	LUNAR (PURE)	LUNAR LIGHT	MAVERICK	NEST PURE	TEXAS	YOUMA CASUAL
Allianz Arena BayWa-Lodges	192			●												
Amrai Suites	36										●					
Anumar	230						●	●								
Apartment in an old building in Vienna	198		●				●									●
Aquila Capital Hamburg	116		●													
Arkform Büro Wien	109			●												
Chalet in Courmayeur	43												●			
Clage Sales Center	16												●			
Color blocking in old buildings	143						●		●							
Hall 1 Frankfurt Trade Fair	70						●						●			
Headquarters Hagl Development GmbH	131							●								
Headquarters Kubox Rotterdam	61		●													
High and low dining at home	244						●									
Holzgauer Haus	221						●									
Hotel Hermitage Vital Resort	252		●				●									●
Hotel Tiefenbrunner	203						●									
Hotel WunnersWat	173		●							●						
House C	33							●								
Jan's Restaurant at Detmolder Hof & Café Elbing	23											●				●
Japanese Restaurant Akaiten	238							●			●					
Les Deux Dienstbach	09						●									
Lodges - SchücoArena Bielefeld	91			●			●									
L'Osteria	49						●						●			
Loxone Campus at Mühlviertel	179			●												
Lukullum	212							●								
Motel One	151						●					●				
Naturhotel Waldklause	77		●				●									
Office space for human unlimited	225		●													
Pietsch & Zeitwerk	80															●
Restaurant at Golfhotel Lindenhof	136											●				
Restaurant MUST	158									●						
Restaurant Patio	64														●	
Revitalized old building villa	99						●									
Schüttflix-Tower in Gütersloh	164					●	●	●			●					
Speisemeisterei at Castle Hohenheim	186				●											
Thatched house on Ameland	87						●									
Tranquil ambience in minimalist luxury	236	●														
Trifôret Alpin Resort	105	●														
Villa Etaner at Premium Eco Resort PRIESTEREGG	122						●									
Villa in the park	56						●									
Workspace Heins arbeitet	147						●									
Zeppelin Museum Friedrichshafen	209							●						●		

09
Gastronomy
Les Deux Dienstbach



P. 09

16
Company Buildings
Clage Sales Center



P. 16

23
Gastronomy
Jan's Restaurant at Detmolder
Hof & Café Elbing



P. 23

33
Private Properties
House C



P. 33

36
Hotel Business
Amrai Suites



P. 36

43
Private Properties
Chalet in Courmayeur



P. 43

49
Gastronomy
L'Osteria



P. 49

56
Private Properties
Villa in the park



P. 56



P. 61



P. 70



P. 80



P. 91



P. 64



P. 77



P. 87



P. 99

61
Company Buildings
Headquarters Kubox Rotterdam

64
Gastronomy
Restaurant Patio

70
Public Buildings
Hall 1 Frankfurt Trade Fair

77
Hotel Business
Naturhotel Waldklaus

80
Gastronomy
Pietsch & Zeitwerk

87
Private Properties
Thatched house on Ameland

91
Public Buildings
Lodges - SchücoArena
Bielefeld

99
Private Properties
Revitalized old building villa

105
Hotel Business
Trifôret Alpin Resort



P. 105

109
Company Buildings
Arkform Büro Wien



P. 109

116
Company Buildings
Aquila Capital Hamburg



P. 116

122
Hotel Business
Villa Etaner at Premium Eco Resort
PRIESTEREGG



P. 122

131
Company Buildings
Headquarters Hagl
Development GmbH



P. 151

136
Gastronomy
Restaurant at Golfhotel
Lindenhof



P. 136

143
Private Properties
Color blocking in old buildings



P. 179

147
Public Buildings
Workspace Heins arbeitet



P. 143



P. 147



P. 192



P. 158

151
Hotel Business
Motel One



P. 173

158
Gastronomy
Restaurant MUST

164
Company Buildings
Schüttfließ-Tower in Güterlohn

173
Hotel Business
Hotel WunnersWat

179
Public Buildings
Loxone Campus at Mühlviertel

186
Gastronomy
Speisemeisterei at
Castle Hohenheim

192
Public Buildings
Allianz Arena BayWa-Lodges

198
Private Properties
Apartment in an old building in
Vienna



P. 186



P. 198

203
Hotel Business
Hotel Tiefenbrunner



P. 203

209
Zeppelin Museum
Friedrichshafen



P. 209

212
Gastronomy
Lukullum



P. 212

221
Hotel Business
Holzgauer Haus



P. 221

225
Company Buildings
Office space for
human unlimited



P. 225

230
Company Buildings
Anumar



P. 230

236
Private Properties
Tranquil ambience in
minimalist luxury



P. 236

238
Gastronomy
Japanese Restaurant Akaiten



P. 238



P. 244



P. 252

244
Private Properties
High and low dining at home

252
Hotel Business
Hotel Hermitage Vital Resort

Important note

The properties presented in this brochure may no longer be publicly accessible or may have ceased operation. KFF assumes no liability for their current status. Please contact the respective operator directly for up-to-date information.



LES DEUX DIENSTBACH
/ MOTEL ONE / AKAITEN
/ SCHÜTTFLIX-TOWER /
RESTAURANT / CLAGE /
LOGEN SCHÜCOARENA
WALDKLAUSE / STICKS
/ TRIFFÔRET / IH2US
CAPITAL / BAYWA LOGE
/ L'OSTERIA / ZEPPELIN
/ WUNNERSWAT / HAGL
DEVELOPMENT / MESSE
HOLZGAUER HAUS

LES DEUX DIENSTBACH
MOTEL ONE \ AKAITEN
/ SCHÜTTFLIX-TOWER /
RESTAURANT \ CLAGE \
LOGEN SCHÜCOARENA
WALDKLAUSE \ STICKS
N' SUSHI / TRIFÔRET /
CAPITAL \ BAYWA LOGE
/ L'OSTERIA / ZEPPELIN
WUNNERSWAT \ HAGL
DEVELOPMENT / MESSE

KFF®