

DIVING INTO PATTERNS



ETRO

Home Interiors

DIVING INTO PATTERNS



ETRO

Home Interiors



A dialogue among space, colors and geometries.
In the backdrop of the modernist Villa Ronchi, in Italy,
Etro unveils a series of captivating settings, showcasing
four distinct color palettes that span from blues and
greens to natural earth tones.

Within the confines of the villa, distinguished by lofty
ceilings and adorned with Art Deco-inspired parquet
flooring and wood panelling, the collection's furnishings
take centre stage, conveying a contemporary allure
and inviting comfort.

Fluid and reassuring shapes, padded volumes, sleek and
minimalist tables, shaggy carpets with geometric patterns,
clean-lined lamps come together in different settings.
The Pluma, Amanti and Onda fabrics add distinct character
to the seatings, accentuating their unique features.

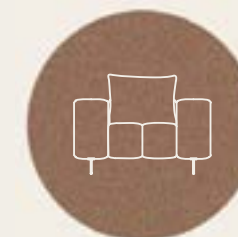
Page after page, the interplay of geometries, hues,
patterns and fabrics becomes the gateway
to an immersive journey into a new concept of home —
a realm of boundless connections.

FUNCTIONAL BLUES



- 04 -

DARK NEUTRALS



- 22 -

ENRICHED GREENS



- 40 -

MELLOW TONES



- 60 -

Cool tones grace the living space – carpets, lighting and decorative elements – lending them a relaxed feel. The shades of blue emphasize the clean lines of the pieces, amplifying the cozy contours of the armchairs and sofas, and accentuating the essence of the furnishings.

FUNCTIONAL BLUES





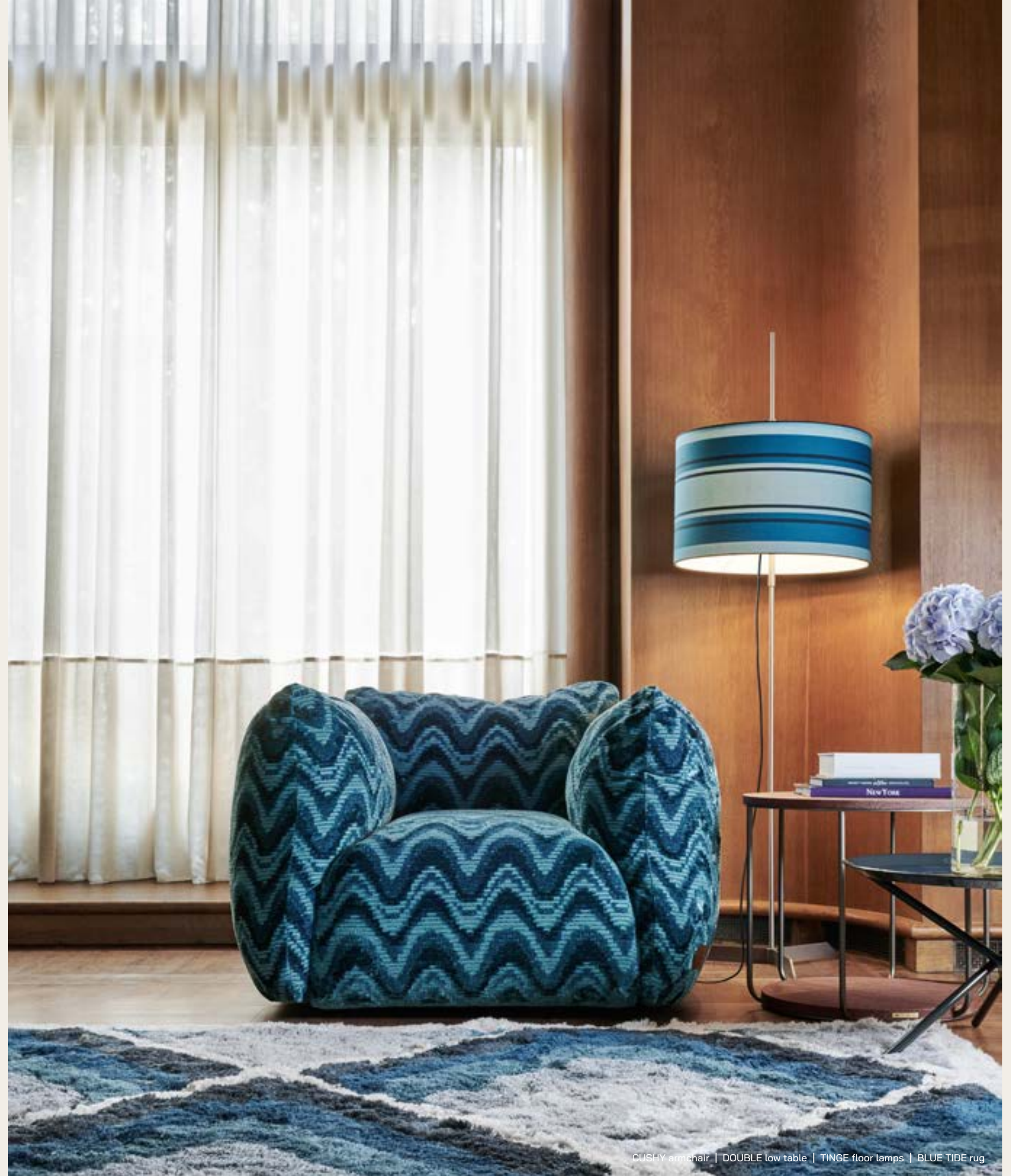
CUSHY 3-seater sofa / armchair | LEVITY armchair | LAGOON low tables | DOUBLE low table | FLY OVER low table | TINGE floor lamps | BLUE TIDE rug

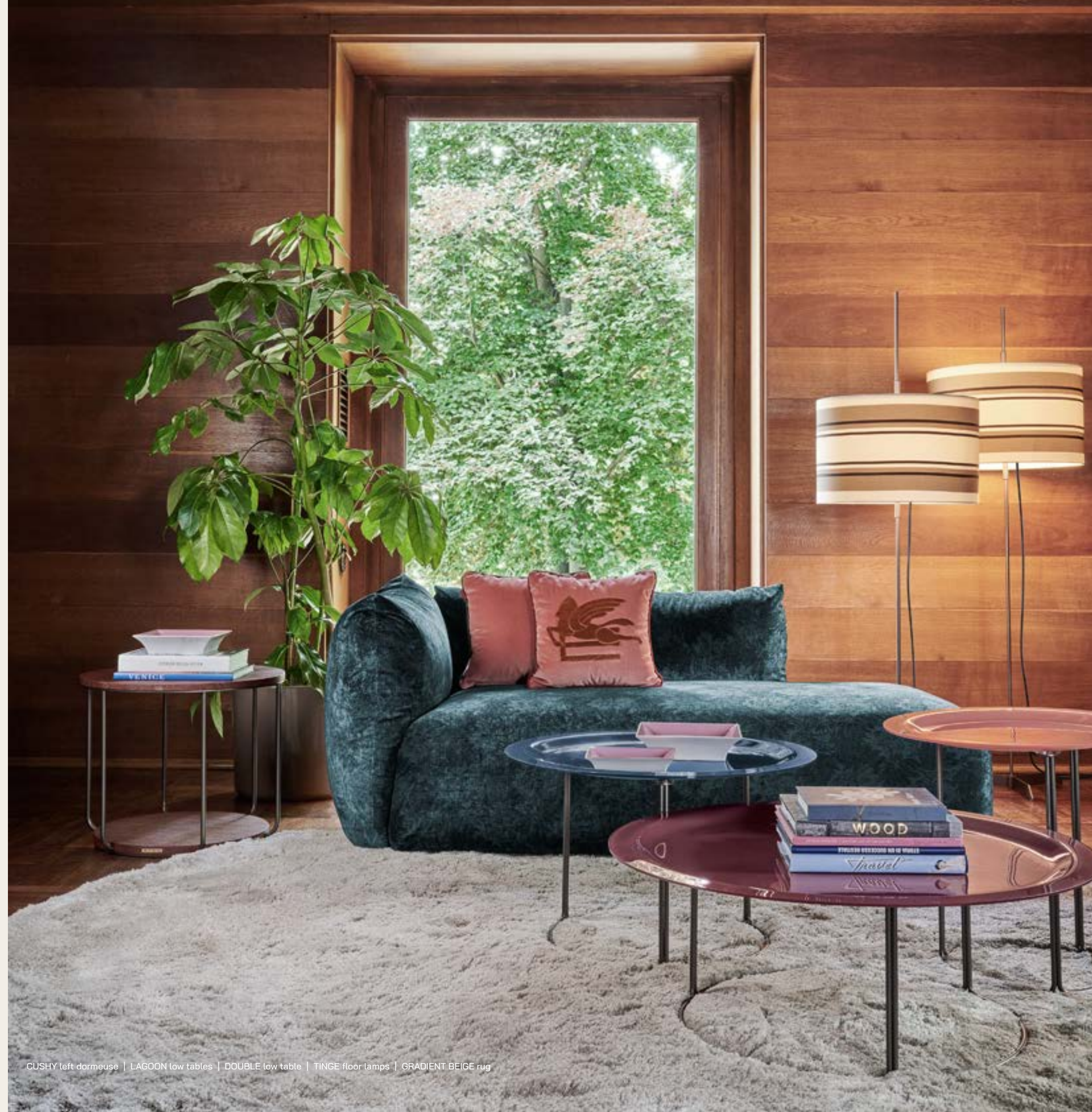


CUSHY 3-seater sofa | LEVITY armchair | LAGOON low tables | DOUBLE low table | FLY OVER low table | TINGE floor lamps | BLUE TIDE rug



LAGOON low tables | BLUE TIDE rug



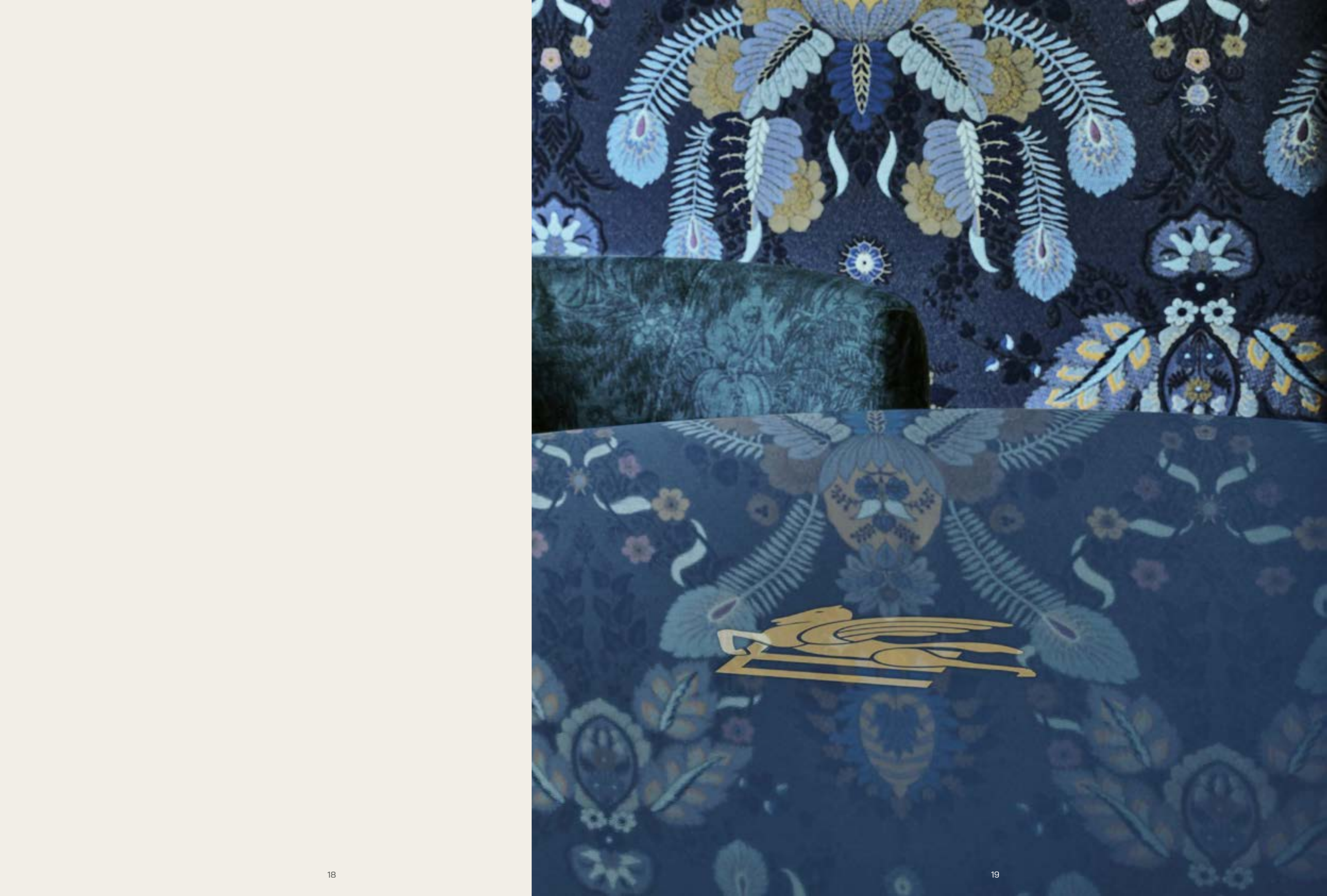


CUSHY left dormeuse | LAGOON low tables | DOUBLE low table | TINGE floor lamps | GRADIENT BEIGE rug



TYPE armchair | LAGOON low tables | DOUBLE low table | TINGE floor lamps | GRADIENT BEIGE rug







LAGOON dining table | BARE chairs | GRADIENT BLUE rug



Layered browns, soft tan and warm oranges soak the spaces with an air of warmth.

Deep and natural earth tones impart a sense of luxury to home furnishings and upholstery fabrics, while textural white and spice-infused hues breathe new life into the retro-inspired designs of the sofas and tables.

DARK NEUTRALS





EASE sectional sofa | DAHLIA armchair | CUSHY pouf | FLY OVER low tables | DOUBLE low tables | LAGOON low table | TINGE floor lamps | BROWN HUES rug



EASE sectional sofa / 3-seater sofa | DAHLIA armchairs | FLY OVER low tables | DOUBLE low tables | LAGOON low tables | TINGE floor lamp | BROWN HUES rug



EASE sectional sofa | FLY OVER low tables | DOUBLE low table | LAGOON low table | BROWN HUES rug





EASE sectional sofa | CUSHY pouf | FLY OVER low tables | DOUBLE low tables | LAGOON low table | TINGE floor lamp | BROWN HUES rug



EASE 3-seater sofa | FLY OVER low tables | DOUBLE low table | TINGE floor lamps | BROWN HUES rug



CUSHY pouf | TINGE floor lamp



DAHLIA armchairs | DOUBLE low table | LAGOON low table | TINGE floor lamp





LAGOON dining table | BARE chairs

Green tones inspired by nature enrich these settings with a sense of wellbeing, expressing the desire to stay connected with the earth.

Green is artfully combined with shades of brown and grey, adding a scenic touch to the living areas.

ENRICHED GREENS





RATIO 4-seater sofa | RATIO UP armchair | LEVITY armchair | FLY OVER low tables | DOUBLE low tables | LAGOON low tables | TINGE floor lamps | GREEN MOSS rug







CUSHY 3-seater sofa / pouf | LEVITY armchair | DOUBLE low tables | LAGOON low tables | TINGE floor lamps | GRADIENT GREEN rug



CUSHY 3-seater sofa | LEVITY armchair | DOUBLE low tables | GRADIENT GREEN rug



LAGOON low table



CUSHY 3-seater sofa | DOUBLE low tables | GRADIENT GREEN rug



CUSHY bed / armchair | FLY OVER night table | LAGOON low table | DOUBLE low table | TINGE floor lamp | GRADIENT BLUE rug



CUSHY bed | FLY OVER night table



CUSHY armchair | LAGOON low table | TINGE floor lamp | GRADIENT BLUE rug



LAGOON dining tables | BARE chairs

Subtle shades of beige, complemented by dove gray and soft creams, along with off-white and warm, desert-inspired tones, form the foundation of this inviting color palette. Vivid Hints of green and brown enliven the composition, crafting a space with a naturally inspired aesthetic.

MELLOW TONES





EASE 2-seater sofa | TYPE armchair | LAGOON low tables | DOUBLE low table | TINGE floor lamps | GRADIENT BEIGE rug



DAHLIA armchair | LAGOON low table | DOUBLE low table | GRADIENT BEIGE rug



EASE 2-seater sofa | TYPE armchair | LAGOON low tables / dining table | BARE chairs | TINGE floor lamps | GRADIENT BEIGE rug



LAGOON dining table | BARE chairs | TINGE floor lamps



LAGOON dining table | BARE chairs | TINGE floor lamps



LAGOON dining table | BARE chair | TINGE floor lamps





RATIO UP 2-seater sofa | LAGOON low tables | ARCHES rug





FEATURED PRODUCTS



SOFAS / ARMCHAIRS

CUSHY (page 6-9)



T.CUSSA03AFFAA + T.CUSPP03AXX
L 270 D 100 H 78 cm
L 106 D 39 1/2 H 30 3/4 in

3-seater sofa with structure in solid poplar wood and multilayer pine wood.
Seat with elastic webbing, variable thickness high density expansive polyurethane foam and goose down.
Upholstery in fabric cat. A Pluma col. Blue, placed print.

CUSHY (page 48-49, 51, 53)



T.CUSSA02AFFBB
L 220 D 100 H 78 cm
L 86 1/2 D 39 1/2 H 30 3/4 in

2-seater sofa with structure in solid poplar wood and multilayer pine wood.
Seat with elastic webbing, variable thickness high density expansive polyurethane foam and goose down.
Upholstery in fabric cat. B Amanti col. Green.

CUSHY (page 7, 13)



T.CUSSA01BFFBB
L 125 D 100 H 78 cm
L 49 D 39 1/2 H 30 3/4 in

Armchair with structure in solid poplar wood and multilayer pine wood.
Seat with elastic webbing, variable thickness high density expansive polyurethane foam and goose down.
Upholstery in fabric cat. B Onda col. Blue.

CUSHY (page 36-37)



T.CUSSA01BFFBB
L 125 D 100 H 78 cm
L 49 D 39 1/2 H 30 3/4 in

Armchair with structure in solid poplar wood and multilayer pine wood.
Seat with elastic webbing, variable thickness high density expansive polyurethane foam and goose down.
Upholstery in fabric cat. B Amanti col. Brown.

CUSHY (page 55, 57)



T.CUSSA01BLLBB
L 125 D 100 H 78 cm
L 49 D 39 1/2 H 30 3/4 in

Armchair with structure in solid poplar wood and multilayer pine wood.
Seat with elastic webbing, variable thickness high density expansive polyurethane foam and goose down.
Upholstery in leather cat. B Nuuk col. 7 Green.

EASE (page 63, 65)



T.EASSA02AFFAA + T.EASTX05AFFKA (2x)
L 210 D 100 H 78 cm
L 82 1/2 D 39 1/2 H 30 3/4 in

2-seater sofa with structure in solid poplar wood and multilayer pine wood with elastic webbing in the seats part.
Metal base with Dusk Bronze finishing.
Seat cushions with variable thickness high density expansive polyurethane foam and memory foam.
Back cushions in goose down with expansive polyurethane foam inserts.
Upholstery in fabric cat. A Small Flag col. 6 Cream.
Removable lining.
Optional piped bolster cushion in expansive polyurethane foam with upholstery in fabric cat. A Small Flag col. 6 Cream and cover in coated fabric Arnica.



T.EASSA06CFFBB + T.EASSA06PFXBX + T.EASSA06LFFBB + T.EASSA06DFFBB + T.EASTX05AFFKB (4x)
L 394 D 372 H 78
L 155 D 146 1/4 H 30 3/4 in

Sectional sofa with structure in solid poplar wood and multilayer pine wood with elastic webbing in the seats part.
Metal base with Dusk Bronze finishing.
Seat cushions with variable thickness high density expansive polyurethane foam and memory foam.
Back cushions in goose down with expansive polyurethane foam inserts.
Upholstery in fabric cat. B Onda col. Brown.
Removable lining.
Optional piped bolster cushion in expansive polyurethane foam and cover in coated fabric Arnica.
Cushion upholstery in fabric cat. B Onda col. Brown.



T.EASLTO4OFMKB
L 88 D 30 H 36
L 34 1/2 D 11 3/4 H 14 1/4 in

Low table with metal structure covered in coated fabric Arnica.
Metal pipe structure and base in Dusk Bronze finishing.



T.EASSA03AFFBB
L 250 D 100 H 78 cm
L 98 1/4 D 39 1/2 H 30 3/4 in

3-seater sofa with structure in solid poplar wood and multilayer pine wood with elastic webbing in the seats part.
Metal base with Dusk Bronze finishing.
Seat cushion with variable thickness high density expansive polyurethane foam and memory foam.
Back cushions in goose down with expansive polyurethane foam inserts.
Upholstery in fabric cat. B Onda col. Brown.
Removable lining.



T.RATSA04AFFBA + T.OPTLG01AXX
L 300 D 108 H 66 cm
L 118 D 42 1/2 H 25 3/4 in

4-seater sofa with structure in poplar wood and foam. Upholstery in fabric cat. B Amanti col. Green.
Structural back cushions included in fabric cat. A Venezia col. 7 Acid Green.
Optional Etro logo embroidery.



T.RA2SA02AFFAA
L 210 D 108 H 66 cm
L 82 1/2 D 42 1/2 H 25 3/4 in

2-seater sofa with structure in poplar wood and foam. Metal feet with Dusk Bronze finishing.
Upholstery in fabric cat. A Small Flag col. 6 Cream.
Structural back cushions included.

ARMCHAIRS



T.DAHSAA01BFFAA
L 90 D 92 H 66 cm
L 35 1/4 D 36 1/4 H 25 3/4 in

Armchair with structure in solid poplar wood and multilayer pine wood.
Seat with elastic webbing and variable thickness high density expansive polyurethane foam.
Upholstery in fabric cat. A Pluma col. Beige.



T.DAHSAA01BFFAA
L 90 D 92 H 66 cm
L 35 1/4 D 36 1/4 H 25 3/4 in

Armchair with structure in solid poplar wood and multilayer pine wood.
Seat with elastic webbing and variable thickness high density expansive polyurethane foam.
Upholstery in fabric cat. A Pluma col. Brown.



T.DAHSAA01BFFDD
L 90 D 92 H 66 cm
L 35 1/4 D 36 1/4 H 25 3/4 in

Armchair with structure in solid poplar wood and multilayer pine wood.
Seat with elastic webbing and variable thickness high density expansive polyurethane foam.
Upholstery in fabric cat. D Cortina col. Greige.



T.LEVSA01AFMDB
L 66 D 91 H 75 cm
L 26 D 35 3/4 H 29 1/2 in

Armchair with structure in coated fabric Arnica.
Cushions in goose down with cotton lining. Upholstery in fabric cat. D Cortina col. Ocean.
Metal base in Dusk Bronze finishing.



T.LEVSA01AFMAB
L 66 D 91 H 75 cm
L 26 D 35 3/4 H 29 1/2 in

Armchair with structure in coated fabric Arnica.
Cushions in goose down with cotton lining. Upholstery in fabric cat. A Pluma col. Green.
Metal base in Dusk Bronze finishing.



T.LEVSA01ALMBB
L 66 D 91 H 75 cm
L 26 D 35 3/4 H 29 1/2 in

Armchair with structure in coated fabric Arnica.
Cushions in goose down with cotton lining. Upholstery in leather cat. B Nuuk col. 7 Green.
Metal base in Dusk Bronze finishing.

RATIO UP (page 42, 44)



T.RA2SA01BFFBA + T.OPTLG01AXX
L 120 D 108 H 66 cm
L 47 ¼ D 42 ½ H 25 ¾ in

Armchair with structure in poplar wood and foam. Metal feet with Dusk Bronze finishing. Upholstery in fabric cat. B Amanti col. Green. Structural back cushions included in fabric cat. A Venezia col. 7 Acid Green. Optional Etro logo embroidery.

TYPE (page 62, 65)



T.TYPSA01AFMBB
L 77 D 73 H 70 cm
L 30 ¼ D 28 ½ H 27 ½ in

Armchair with structure in poplar wood and foam. Upholstery in fabric cat. B Onda col. Green. Metal base in Dusk Bronze finishing.

TYPE (page 16)



T.TYPSA01AFMBB
L 77 D 73 H 70 cm
L 30 ¼ D 28 ½ H 27 ½ in

Armchair with structure in poplar wood and foam. Upholstery in fabric cat. B Onda col. Blue. Metal base in Dusk Bronze finishing.

CUSHY (page 14-15)



T.CUSSA10AFFBB
L 190 D 100 H 78 cm
L 74 ½ D 39 H 30 ¾ in

Left dormeuse with structure in solid poplar wood and multilayer pine wood. Seat in variable thickness high density expansive polyurethane foam. Upholstery in fabric cat. B Amanti col. Blue.

POUFS

CUSHY (page 48)



T.CUSPF03EFFAA + T.CUSPP03EXX
L 100 D 100 H 48 cm
L 39 ¼ D 39 ¼ H 19 in

Pouf with seat in high density expansive polyurethane foam. Upholstery in fabric cat. A Pluma col. Green, placed print. Removable lining.

CUSHY (page 24, 30, 33)



T.CUSPF03EFFBB
L 100 D 100 H 48 cm
L 39 ¼ D 39 ¼ H 19 in

Pouf with seat in high density expansive polyurethane foam. Upholstery in fabric cat. B Onda col. Green. Removable lining.

CUSHY (page 77)



T.CUSOL05AFFZZ
L 100 D 100 H 48 cm
L 39 ¼ D 39 ¼ H 19 in

Outdoor pouf with seat in high density expansive polyurethane foam. Upholstery in Outdoor fabric cat. A Pluma col. Green. Removable lining.

CUSHY (page 77)



T.CUSOL05AFFZZ
L 100 D 100 H 48 cm
L 39 ¼ D 39 ¼ H 19 in

Outdoor pouf with seat in high density expansive polyurethane foam. Upholstery in Outdoor fabric cat. A Pluma col. Blue. Removable lining.

CUSHY (page 77)



T.CUSOL05AFFZZ
L 100 D 100 H 48 cm
L 39 ¼ D 39 ¼ H 19 in

Outdoor pouf with seat in high density expansive polyurethane foam. Upholstery in Outdoor fabric cat. A Pluma col. Brown. Removable lining.

LOW TABLES

DOUBLE (page 64)



T.DOULT01AFMKB
ø 40 H 40 cm
ø 15 3/4 H 15 3/4 in

Low table with upper and lower tops in MDF covered in coated fabric Arnica. Metal structure in Dusk Bronze finishing.

DOUBLE (page 49, 51, 53)



T.DOULT01BFMKB
ø 40 H 50 cm
ø 15 3/4 H 19 3/4 in

Low table with upper and lower tops in MDF covered in coated fabric Arnica. Metal structure in Dusk Bronze finishing.

DOUBLE (page 16, 25-28, 31, 35-37, 42-43, 45, 47, 49, 51, 53-54)



T.DOULT01CFMKB
ø 40 H 60 cm
ø 15 3/4 H 23 1/2 in

Low table with upper and lower tops in MDF covered in coated fabric Arnica. Metal structure in Dusk Bronze finishing.

DOUBLE (page 6-9, 13-15, 24, 27-28, 30, 48, 62)



T.DOULT01HFMKB
ø 60 H 50 cm
ø 23 1/2 H 19 3/4 in

Low table with upper and lower tops in MDF covered in coated fabric Arnica. Metal structure in Dusk Bronze finishing.

DOUBLE (page 24, 26-27, 32)



T.DOULT01SFMKB
ø 120 H 35 cm
ø 47 1/4 H 13 3/4 in

Low table with upper and lower tops in MDF covered in coated fabric Arnica. Metal structure in Dusk Bronze finishing.

FLY OVER (page 27, 32)



T.FLYLT03DWMDB
L 55 D 55 H 40 cm
L 21 3/4 D 21 3/4 H 15 3/4 in

Low table with structure in curved Multiflex wood and MDF with Glossy lacquered finishing col. Clay. High pressure laminate profile with Dusk Bronze finishing with Etro logo (1 side).

FLY OVER (page 6, 8, 27, 32)



T.FLYLT04HFMKB
L 60 D 55 H 50 cm
L 23 1/2 D 21 3/4 H 19 3/4 in

Low table with structure in curved Multiflex wood and MDF covered in coated fabric Arnica. High pressure laminate profile with Dusk Bronze finishing with Etro logo (1 side).

FLY OVER (page 24-25, 26-28, 30-31, 42-43, 45, 47)



T.FLYLT04WWMDB
L 150 D 76 H 40 cm
L 23 1/2 D 21 3/4 H 19 3/4 in

Low table with structure in curved Multiflex wood and MDF with Glossy lacquered finishing col. Clay. High pressure laminate profile with Dusk Bronze finishing with Etro logo (1 side).

FLY OVER (page 24-25, 26-28, 30-31)



T.FLYLT04UFMKB
L 140 D 76 H 30 cm
L 21 3/4 D 21 3/4 H 15 3/4 in

Low table with structure in curved Multiflex wood and MDF covered in coated fabric Arnica. High pressure laminate profile with Dusk Bronze finishing with Etro logo (1 side).

LAGOON (page 55, 57)



T.LAGLT01IPMDB
Ø 56 H 51 cm
Ø 22 H 19 3/4 in

Low table with structure in curved metal pipes with Dusk Bronze finishing. Polymethacrylate top with Glossy lacquered finishing col. Dolphin. Etro logo col. Bronze in the center of the top.

LAGOON (page 42, 48, 52, 55, 57, 64, 72-73, 76-77)



T.LAGLT01IPMDB
Ø 56 H 51 cm
Ø 22 H 19 3/4 in

Low table with structure in curved metal pipes with Dusk Bronze finishing. Polymethacrylate top with Glossy lacquered finishing col. Ivory. Etro logo col. Bronze in the center of the top.

LAGOON (page 6, 8, 11)



T.LAGLT01IPMDB
Ø 56 H 51 cm
Ø 22 H 19 3/4 in

Low table with structure in curved metal pipes with Dusk Bronze finishing. Polymethacrylate top with Glossy lacquered finishing col. Wine. Etro logo col. Bronze in the center of the top.

LAGOON (page 15-17, 25-26, 28, 31, 36-37)



T.LAGLT01IPMDB
Ø 56 H 51 cm
Ø 22 H 19 3/4 in

Low table with structure in curved metal pipes with Dusk Bronze finishing.
Polymethacrylate top with Glossy lacquered finishing col. Powder.
Etro logo col. Bronze in the center of the top.

LAGOON (page 35, 43, 45, 72, 74)



T.LAGLT01IPMDB
Ø 56 H 51 cm
Ø 22 H 19 3/4 in

Low table with structure in curved metal pipes with Dusk Bronze finishing.
Polymethacrylate top with Glossy lacquered finishing col. Clay.
Etro logo col. Bronze in the center of the top.

LAGOON (page 62-63, 65)



T.LAGLT01HPMDB
Ø 70 H 42 cm
Ø 27 1/2 H 16 1/4 in

Low table with structure in curved metal pipes with Dusk Bronze finishing.
Polymethacrylate top with Glossy lacquered finishing col. Clay.
Etro logo col. Bronze in the center of the top.

LAGOON (page 14-15, 16-17, 49, 52)



T.LAGLT01HPMDB
Ø 70 H 42 cm
Ø 27 1/2 H 16 1/4 in

Low table with structure in curved metal pipes with Dusk Bronze finishing.
Polymethacrylate top with Glossy lacquered finishing col. Night Blue.
Etro logo col. Bronze in the center of the top.

LAGOON (page 42, 44)



T.LAGLT01HPMDB
Ø 70 H 42 cm
Ø 27 1/2 H 16 1/4 in

Low table with structure in curved metal pipes with Dusk Bronze finishing.
Polymethacrylate top with Glossy lacquered finishing col. Yellow.
Etro logo col. Bronze in the center of the top.

LAGOON (page 72-73)



T.LAGLT01HPMDB
Ø 70 H 42 cm
Ø 27 1/2 H 16 1/4 in

Low table with structure in curved metal pipes with Dusk Bronze finishing.
Polymethacrylate top with Glossy lacquered finishing col. Green Brown.
Etro logo col. Bronze in the center of the top.

LAGOON (page 6-11)



T.LAGLT01NPMDB
Ø 90 H 24 cm
Ø 35 1/2 H 9 1/2 in

Low table with structure in curved metal pipes with Dusk Bronze finishing.
Polymethacrylate top with Glossy lacquered finishing col. Dolphin.
Etro logo col. Bronze in the center of the top.

LAGOON (page 62-63, 65)



T.LAGLT01OPMDB
Ø 90 H 33 cm
Ø 35 1/2 H 13 in

Low table with structure in curved metal pipes with Dusk Bronze finishing.
Polymethacrylate top with Glossy lacquered finishing col. Olive Green.
Etro logo col. Bronze in the center of the top.

LAGOON (page 6, 9, 10-11, 42)



T.LAGLT01OPMDB
Ø 90 H 33 cm
Ø 35 1/2 H 13 in

Low table with structure in curved metal pipes with Dusk Bronze finishing.
Polymethacrylate top with Glossy lacquered finishing col. Green Brown.
Etro logo col. Bronze in the center of the top.

LAGOON (page 15, 17)



T.LAGLT01OPMDB
Ø 90 H 33 cm
Ø 35 1/2 H 13 in

Low table with structure in curved metal pipes with Dusk Bronze finishing.
Polymethacrylate top with Glossy lacquered finishing col. Wine.
Etro logo col. Bronze in the center of the top.

LAGOON (page 42-43, 47)



T.LAGLT01OPMDB
Ø 90 H 33 cm
Ø 35 1/2 H 13 in

Low table with structure in curved metal pipes with Dusk Bronze finishing.
Polymethacrylate top with Glossy lacquered finishing col. Yellow.
Etro logo col. Bronze in the center of the top.

TABLES

LAGOON (page 66-70)



Dining table with structure in curved metal pipes with Dusk Bronze finishing.
MDF top with Glossy lacquered finishing col. Ivory.
Etro logo col. Bronze in the center of the top.

T.LAGDT02GWMDB
L 240 D 110 H 75 cm
L 94 1/2 D 43 1/4 H 29 1/2 in

LAGOON (page 19-21, 39, 59)



Dining table with structure in curved metal pipes with Dusk Bronze finishing.
MDF top with Glossy lacquered finishing col. Night Blue.
Etro logo col. Bronze in the center of the top.

T.LAGDT01BWMDB
Ø 100 H 75 cm
Ø 39 1/4 H 29 1/2 in

LAGOON (page 39, 59)



Dining table with structure in curved metal pipes with Dusk Bronze finishing.
MDF top with Glossy lacquered finishing col. Clay.
Etro logo col. Bronze in the center of the top.

T.LAGDT01BWMDB
Ø 100 H 75 cm
Ø 39 1/4 H 29 1/2 in

LAGOON (page 59)



Dining table with structure in curved metal pipes with Dusk Bronze finishing.
MDF top with Glossy lacquered finishing col. Olive Green.
Etro logo col. Bronze in the center of the top.

T.LAGDT01BWMDB
Ø 100 H 75 cm
Ø 39 1/4 H 29 1/2 in

CHAIRS

BARE (page 59, 65, 67)



T.BARCH02AFWBC
L 62 D 55 H 79 cm
L 24 1/4 D 21 1/2 H 30 3/4 in

Chair with armrests with structure with seat in fir wood, elastic webbing that guarantees springiness, variable thickness expansive polyurethane foam and polyester fibre.
Curved backrest in multilayer poplar wood.
Base in solid ash wood with Dusk Bronze finishing.
Upholstery in fabric cat. B Amanti col. Green.

BARE (page 59, 65, 67-69)



T.BARCH02AFWAC
L 62 D 55 H 79 cm
L 24 1/4 D 21 1/2 H 30 3/4 in

Chair with armrests with structure with seat in fir wood, elastic webbing that guarantees springiness, variable thickness expansive polyurethane foam and polyester fibre.
Curved backrest in multilayer poplar wood.
Base in solid ash wood with Dusk Bronze finishing.
Upholstery in fabric cat. A Pluma col. Green.

BARE (page 59, 70)



T.BARCH02AFWBC
L 62 D 55 H 79 cm
L 24 1/4 D 21 1/2 H 30 3/4 in

Chair with armrests with structure with seat in fir wood, elastic webbing that guarantees springiness, variable thickness expansive polyurethane foam and polyester fibre.
Curved backrest in multilayer poplar wood.
Base in solid ash wood with Dusk Bronze finishing.
Upholstery in fabric cat. B Onda col. Green.

BARE (page 65, 67, 69)



T.BARCH02AFWBC
L 62 D 55 H 79 cm
L 24 1/4 D 21 1/2 H 30 3/4 in

Chair with armrests with structure with seat in fir wood, elastic webbing that guarantees springiness, variable thickness expansive polyurethane foam and polyester fibre.
Curved backrest in multilayer poplar wood.
Base in solid ash wood with Dusk Bronze finishing.
Upholstery in fabric cat. B Curl col. Bean.

BARE (page 19, 20-21)



T.BARCH02AFWBC
L 62 D 55 H 79 cm
L 24 1/4 D 21 1/2 H 30 3/4 in

Chair with armrests with structure with seat in fir wood, elastic webbing that guarantees springiness, variable thickness expansive polyurethane foam and polyester fibre.
Curved backrest in multilayer poplar wood.
Base in solid ash wood with Dusk Bronze finishing.
Upholstery in fabric cat. B Amanti col. Blue.

BARE (page 20-21, 39, 59)



T.BARCH02AFWAC
L 62 D 55 H 79 cm
L 24 ¼ D 21 ½ H 30 ¾ in

Chair with armrests with structure with seat in fir wood, elastic webbing that guarantees springiness, variable thickness expansive polyurethane foam and polyester fibre.
Curved backrest in multilayer poplar wood.
Base in solid ash wood with Dusk Bronze finishing.
Upholstery in fabric cat. A Pluma col. Blue.

BARE (page 20-21, 39, 59)



T.BARCH02AFWBC
L 62 D 55 H 79 cm
L 24 ¼ D 21 ½ H 30 ¾ in

Chair with armrests with structure with seat in fir wood, elastic webbing that guarantees springiness, variable thickness expansive polyurethane foam and polyester fibre.
Curved backrest in multilayer poplar wood.
Base in solid ash wood with Dusk Bronze finishing.
Upholstery in fabric cat. B Onda col. Blue.

BARE (not displayed)



T.BARCH02AFWBC
L 62 D 55 H 79 cm
L 24 ¼ D 21 ½ H 30 ¾ in

Chair with armrests with structure with seat in fir wood, elastic webbing that guarantees springiness, variable thickness expansive polyurethane foam and polyester fibre.
Curved backrest in multilayer poplar wood.
Base in solid ash wood with Dusk Bronze finishing.
Upholstery in fabric cat. B Amanti col. Brown.

BARE (page 39, 59)



T.BARCH02AFWAC
L 62 D 55 H 79 cm
L 24 ¼ D 21 ½ H 30 ¾ in

Chair with armrests with structure with seat in fir wood, elastic webbing that guarantees springiness, variable thickness expansive polyurethane foam and polyester fibre.
Curved backrest in multilayer poplar wood.
Base in solid ash wood with Dusk Bronze finishing.
Upholstery in fabric cat. A Pluma col. Brown.

BARE (page 39, 59)



T.BARCH02AFWBC
L 62 D 55 H 79 cm
L 24 ¼ D 21 ½ H 30 ¾ in

Chair with armrests with structure with seat in fir wood, elastic webbing that guarantees springiness, variable thickness expansive polyurethane foam and polyester fibre.
Curved backrest in multilayer poplar wood.
Base in solid ash wood with Dusk Bronze finishing.
Upholstery in fabric cat. B Onda col. Brown.

BEDS

CUSHY (page 54-56)



T.CUSBD01DFFBB
For mattress L 180 D 200 cm
L 252 D 253 H 110 cm
L 99 D 99 ¼ H 43 ¼ in

Bed with structure in solid poplar wood and multilayer pine wood.
Headboard in variable thickness high density expansive polyurethane foam and goose down.
Upholstery in fabric cat. B Onda col. Green.

NIGHT STORAGE UNITS

FLY OVER (page 54, 56)



T.FLYNS05BWMDB
L 65 D 46 H 50 cm
L 25 ½ D 18 H 19 ¾ in

2 drawers night table with structure in curved Multiflex wood and MDF with Glossy lacquered finishing col. Ivory. Drawers front in MDF with Glossy lacquered finishing col. Ivory.
Drawers inner covering in microfibre.
High pressure laminate profile with Dusk Bronze finishing with Etro logo (1 side).

LIGHTS

TINGE (page 6-8, 25, 33, 37, 48, 65, 67, 69, 70, 73)



T.TINLA01AFMLB
Ø 41 H 180 cm
Ø 16 1/4 H 70 3/4 in

Floor lamp with structure in metal with Dusk Bronze finishing.
Shade in Canvas available in Beige, Blue, Brown and Green colours.

TINGE (page 6-8, 13-16, 26, 30, 32, 35, 43, 45, 54, 57, 62)



T.TINLA01BFMLB
Ø 55 H 180 cm
Ø 21 3/4 H 70 3/4 in

Floor lamp with structure in metal with Dusk Bronze finishing.
Shade in Canvas available in Beige, Blue, Brown and Green colours.

COMPLEMENTS

ARCHES (page 72-74)



T.ARCCM03XQCAX-D4X3
L 400 D 300 cm
L 236 1/4 D 197 in

Handtufted rug in wool and Bamboo.

BLUE TIDE (page 6-11, 13)



T.BLTCM03XQCAX-D4X3
L 400 D 300 cm
L 236 1/4 D 197 in

Handtufted rug in wool and Bamboo.

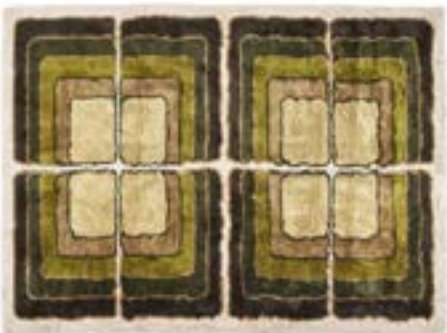
BROWN HUES (page 24-28, 30-32)



T.BRHCM03XQCAX-D4X3
L 400 D 300 cm
L 236 1/4 D 197 in

Handtufted rug in wool and Bamboo.

GREEN MOSS (page 42-47)



T.GRMCM03XQCAX-D4X3
L 400 D 300 cm
L 236 1/4 D 197 in

Handtufted rug in wool and Bamboo.

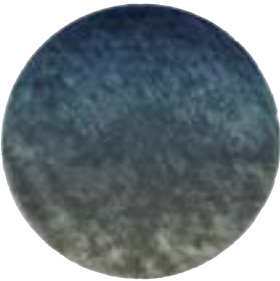
GRADIENT BEIGE (page 14-17, 62-65)



Handtufted rug in wool and Bamboo in Beige colour.

T.GRACM034QCAX-D30
Ø 300 cm
Ø 118 in

GRADIENT BLUE (page 20-21, 54-55, 57)



Handtufted rug in wool and Bamboo in Blue colour.

T.GRACM031QCAX-D30
Ø 300 cm
Ø 118 in

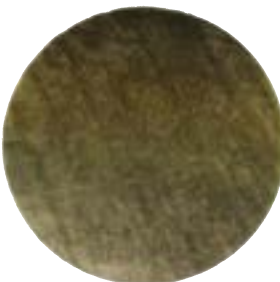
GRADIENT BROWN (page 36-37)



Handtufted rug in wool and Bamboo in Brown colour.

T.GRACM032QCAX-D30
Ø 300 cm
Ø 118 in

GRADIENT GREEN (page 48-49, 51-53)



Handtufted rug in wool and Bamboo in Green colour.

T.GRACM033QCAX-D30
Ø 300 cm
Ø 118 in

Creative Direction **Marco De Vincenzo**
Concept **Alice Ballabio**
Photo **Silvio Macchi**

Pre-press **Monogramma, Cantù**
Printed in Italy by **Grafica Gioia, Cantù**
10.2023 © Copyright by **ONIRO Group s.r.l.**

This catalogue is property of ONIRO Group and cannot be sold. You may not reproduce any part of this catalogue without written authorization of the publisher.

There are no licenses, either implied or expressed, to reproduce any part of this catalogue unless the license is in writing and signed by ONIRO Group. Copyright Laws protect the content of this catalogue, including the photographs and furniture design.

Pictures have an indicative value.
The dimensions are approximate (with a tolerance of +/- 2%) and subject to change.
The company preserves the right to change the technical features of the products shown in this catalogue without notice as a result of technical updates.



etrohomeinteriors.onirogroup.it

ONIRO GROUP

Via Montesolaro 14/B | 22063 Cantù (Co) Italy
T. +39 031 70757 | F. +39 031 711540
info@onirogroup.it | www.onirogroup.it