

CONTEMPORARY

collection



BARJ BUZZONI

ART FOR LUXURY



BARJ BUZZONI

ART FOR LUXURY

Founded in 1955 by Maria Barigazzi, the company began as a modest venture creating artworks for interior design. Maria, a former scenographer, quickly expanded her reach beyond the local market and, in due course, ventured into national and international territory. Alongside other Italian artists, Maria is credited with the invention of the “aged canvas,” a hallmark feature of our brand to this day. Our paintings now grace the interiors of **over 35 high-end luxury hotels**, serving as a testament to the quality and elegance of our work.

Our company produces paintings that draw inspiration from classical artistic traditions while simultaneously capturing the essence of contemporary aesthetics. Each artwork we create is the result of expertly blending antique techniques with modern styles, resulting in unique and original paintings that are unparalleled in their beauty and sophistication.

COMPANY

Our company now proudly presents **four main collections**: Classic, Contemporary, Habito Wall-Art and Heritage.

Our team of artists and craftsmen consists of highly qualified professionals, which realize the projects proposed by our Art Consulting division. Thanks to their technical expertise and the creativity of our designers, we can offer exclusive and original works of art that exalt the beauty and elegance of your home and the most exclusive environments. We invite you to explore this catalog and let yourself be seduced by the beauty and elegance of the Contemporary collection, which is truly a testament to our company's unwavering commitment to excellence.

The Contemporary collection, which began in the 80s, has become increasingly important in recent times. It is inspired by the timeless beauty of the classic, yet blends it with a more modern and minimalistic style, resulting in original and innovative pieces that can seamlessly adapt to any type of environment.

Contemporary is characterized by its captivating and striking **Materico**, a materic style which boasts textured elements that are multidimensional and richly tactile. The thicknesses are given by Materia, a natural compound created in our company that includes precious materials, such as alabaster powder.

The subjects of the collection are always diverse and span from naturalistic and floral to abstract and contemporary. The pieces are created using different techniques, such as acrylic, oil, and mixed media, on various supports that range from classic canvas to wooden panels, and even plastic materials.

CONTEMPORARY

At request, the artwork is then finished with **luxurious touches** such as gold or silver leaf or with refined lacquered finishes that elevate it to a true masterpiece.

The Contemporary collection stands for **refinement, elegance, and progress**. Sometimes boasts powerful and expressive colors, always maintaining his sophisticated style.

Each work is produced entirely in Italy by our skilled and passionate Italian artists who work exclusively for us.

The production process takes place at the headquarters in Parma. Here the design and creation of new pieces are carefully overseen by the art consulting division.



2

Size: 160 x 250 cm
 Subject: MT668
 Technique: Materico

Materico

Materico is one of the key styles in the Contemporary collection. Materic artworks are made with **Materia**, a blend of alabaster powder and natural glues that gives to each piece a unique character and texture. When you touch these pieces, you can feel the artist's dedication and craftsmanship.

The use of Materia creates works of art with raised lines and textured areas that give birth to soft or decisive, detailed or rough textures. These three-dimensional

pieces generate stunning **chiaroscuro** effects, breathing life into even the simplest monochrome work.

The expressive power of color and the character of the texture join forces, resulting in masterpieces with a visually striking impact.

Whether you're an architect, interior designer or a casual enthusiast, the materic style is sure to captivate your senses and leave you spellbound.

Art consulting

Our **Art Consulting division** is our go-to source for creating stunning and innovative decorative solutions that elevate your space to new heights of elegance and sophistication.

We're here to make the most daring artistic dreams come true by providing top-tier assistance every step of the way. Whether you're looking to delegate all the work to us or collaborate closely with our team of experts, we're

committed to delivering results that exceed your expectations. We think that great art is all about effective **communication**. That's why we make it a priority to sit down with you and really get to know your vision and style preferences. From there, we'll work to craft a bespoke solution that brings our unique artistic vision to life.

With our extensive knowledge and **experience**, there's no project too big or too complex for us to tackle.



3



3

Size: 132 x 132 cm
Inner size: 110 x 110 cm
Frame finish: Black and gold
Frame: 1760 and WB
Subject: MT715
Technique: Materico

Size: 126 x 146 cm
Inner size: 120 x 140 cm
Frame finish: Guazzo gold
Frame: 1907G
Subject: MT714
Technique: Materico

4

The **gold leaf**, with its natural brightness, gives a sense of great wealth to any subject on which it is placed, transforming it into a unique and precious piece of art.

The reflective qualities of the gold leaf create a bright and peaceful atmosphere in any space, thanks to its golden shine.

4





Bespoke Art

One of the unique features of Contemporary art collection is the ability to create **customized art works** tailored to the specific needs and desires of the private buyer or professional.

This process involves a close collaboration between the artistic consultant and the client, where the client is involved in the decision-making process every step of the way.

Customized Contemporary artworks offer a wide range of possibilities, from selecting the size and shape of the piece to choosing the color palette and texture.

This personalized approach results in a truly **one-of-a-kind piece** that perfectly fits your space and aesthetic preferences.

5

Subject: MT716
Technique: Materico

6



Size: 102 x 102 cm
Inner size: 100 x 100 cm
Frame finish: Gold
Frame: WB
Subject: MT717
Technique: Materico

7



Size: 124 x 94 cm
Inner size: 120 x 90 cm
Frame finish: Gold and white
Frame: 1914
Subject: MT718
Technique: Materico



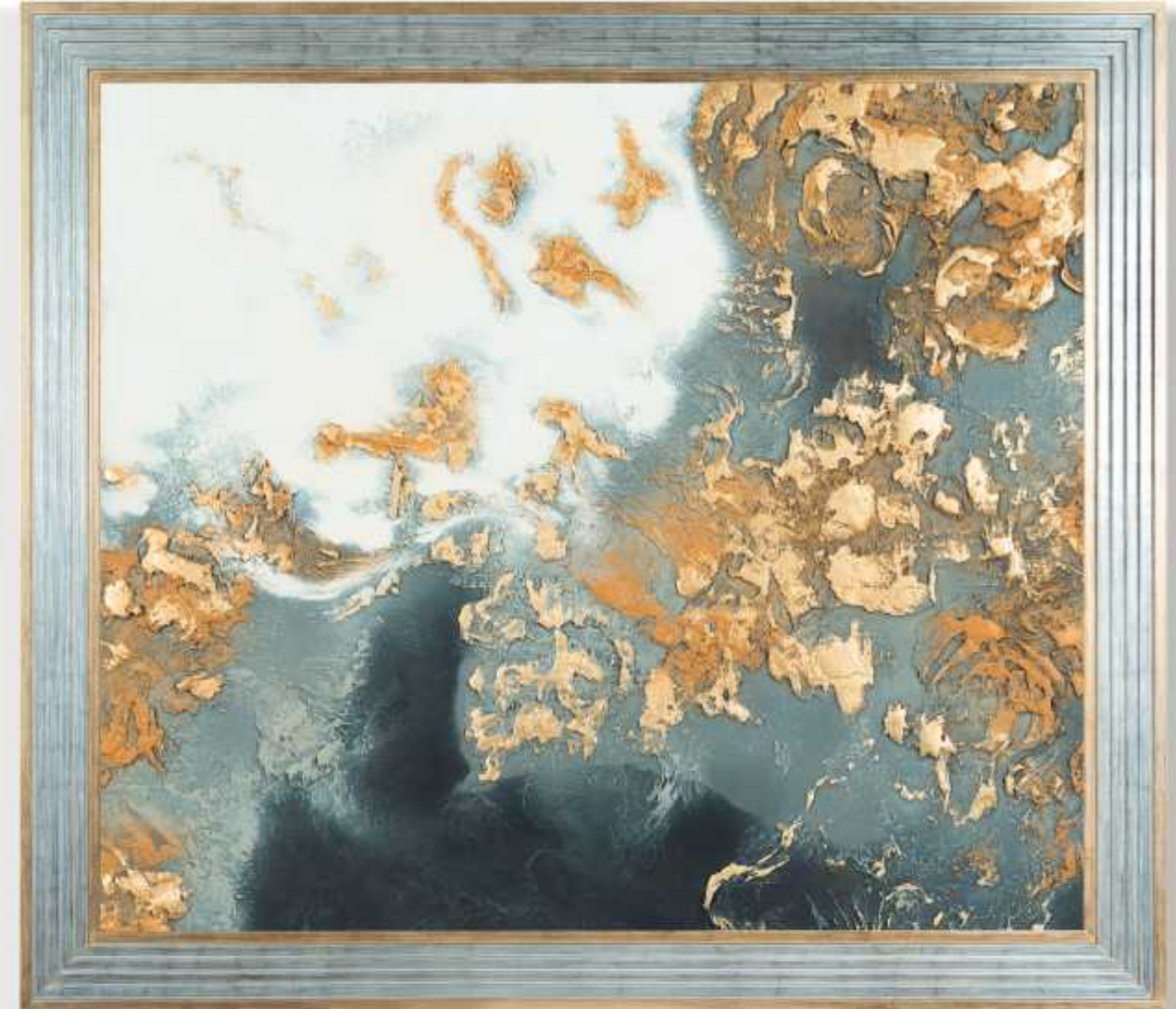
8

8

Size: 130 x 130 cm
Inner size: 110 x 110 cm
Frame finish: Black
Frame: 1760
Subject: MT719
Technique: Materico

Size: 143 x 123 cm
Inner size: 120 x 100 cm
Frame finish: Silver and gold
Frame: 1755 G
Subject: MT720
Technique: Materico

9



9

The use of **classic frames** on modern artworks is a nod to Classic collection, while also challenging its conventions and pushing artistic boundaries. It creates a unique dialogue between the old and the new, inviting the viewer to reconsider their understanding of both styles.

The designs of the classic frames create a stunning contrast with the bold and abstract style of the **modern artworks**. This level of versatility and customization is unmatched. The frame itself becomes an integral part of the artwork, contributing to its overall aesthetic and impact.

10



10

Size: 102 x 122 cm
Inner size: 100 x 120 cm
Frame finish: Black
Frame: WB
Subject: MT721
Technique: Materico

Size: 182 x 122 cm
Inner size: 180 x 120 cm
Frame finish: Champagne
Frame: WB
Subject: MT722
Technique: Materico

11

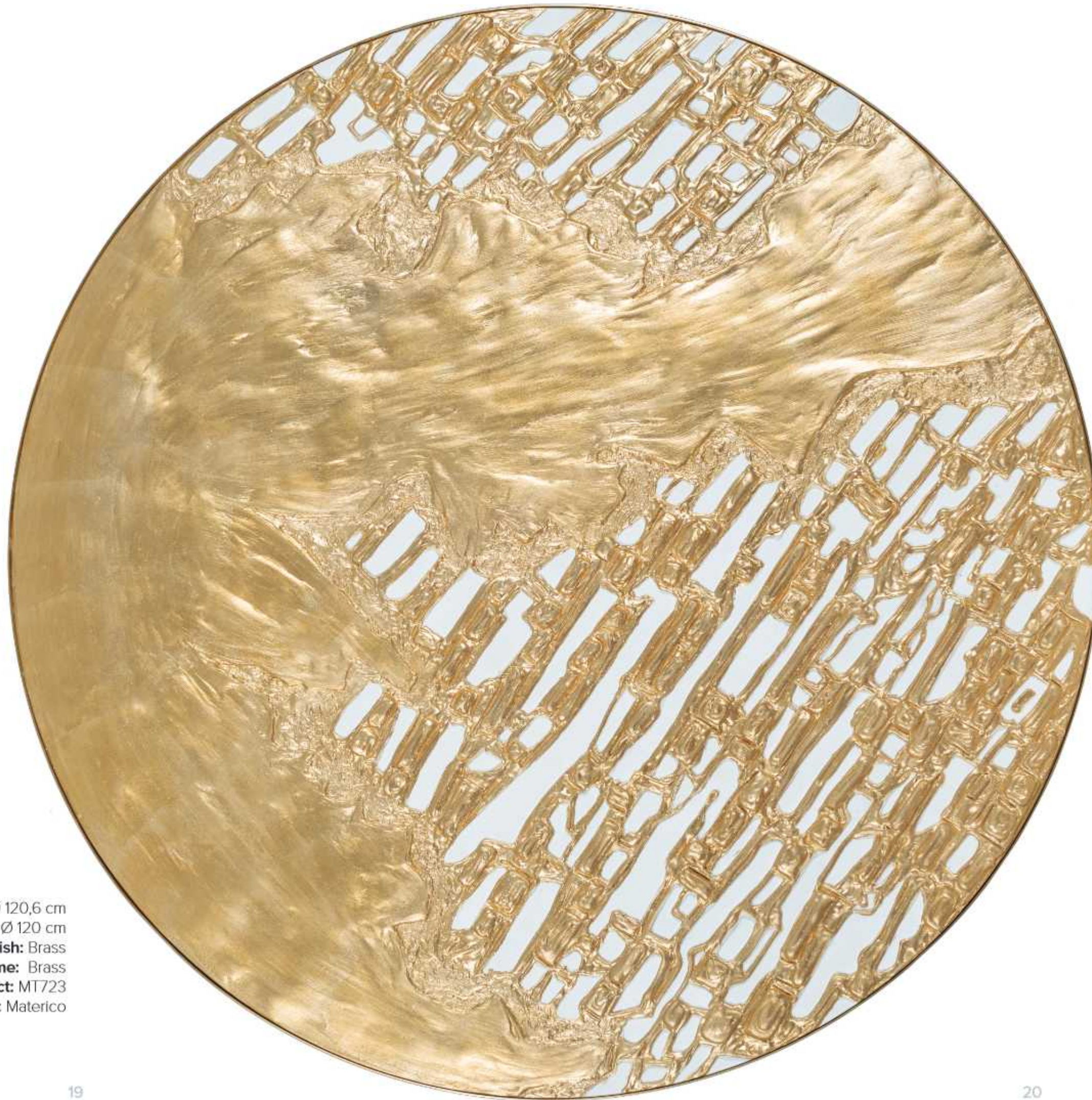


A painting can make an entire environment comfortable, blend with it, and reflect its colors. To choose the artwork that best suits a chosen location, you can seek advice from our Art Consulting department, which is available to meet the demands and make innovative proposals.

11

12

Size: Ø 120,6 cm
Inner size: Ø 120 cm
Frame finish: Brass
Frame: Brass
Subject: MT723
Technique: Materico



Gold leaf is a thin sheet of gold that is used in art to add a sense of luxury and elegance to a piece.

The inspiration behind this painting is the Sun, which is reflected in the warm and vibrant hues used in the artwork. The gold accentuates the radiance and vitality of this powerful natural phenomenon, further strengthening its connection to the artwork. Our artists apply the gold by hand to the painting's textured surface, creating a captivating visual display that shimmers and reflects light in different directions depending on the viewer's perspective. The gold also adds depth and dimension to the piece, making it more dynamic and three-dimensional.

13

Subject: MT586
Technique: Materico



When two opposing colors are placed side by side, they create an intense visual tension that can capture the viewer's attention.

This piece is inspired by a shining star.

With his light it comes out from the darkness.

The intense blackness of the background provides a striking **contrast** to the brightness of the gold leaf, creating a visual tension that accentuates the circular form of the central golden circle.

The addition of the gold leaf increases the three-dimensional effect, as light reflects off the surface irregularities, making the circle even more dynamic and lively.

14

Size: 152 x 152 cm
Inner size: 150 x 150 cm
Frame finish: Black
Frame: WB
Subject: MT724
Technique: Materico

15

Size: 152 x 152 cm
Inner size: 150 x 150 cm
Frame finish: Black
Frame: WB
Subject: MT725
Technique: Materico



16

Size: 102 x 162 cm
 Inner size: 100 x 160 cm
 Frame finish: Black
 Frame: WB
 Subject: ME001
 Technique: Acrylic on canvas



17



17

Size: 114 x 114 cm
Inner size: 110 x 110 cm
Frame finish: Silver and white
Frame: 1914
Subject: MT726
Technique: Materico

18



18

In our Contemporary collection you can find **unique color combination**. Within these pages, we present two pieces of artwork where the mesmerizing hue of turquoise takes center stage against a textured, predominantly dark background. The warm tones of the

backdrop in (17) beautifully complement the cool blue, producing an innovative and well-balanced composition. The two paintings portray the process of stylizing a butterfly, starting from a realistic and recognizable form and transforming it into a simple yet expressive stroke of color.

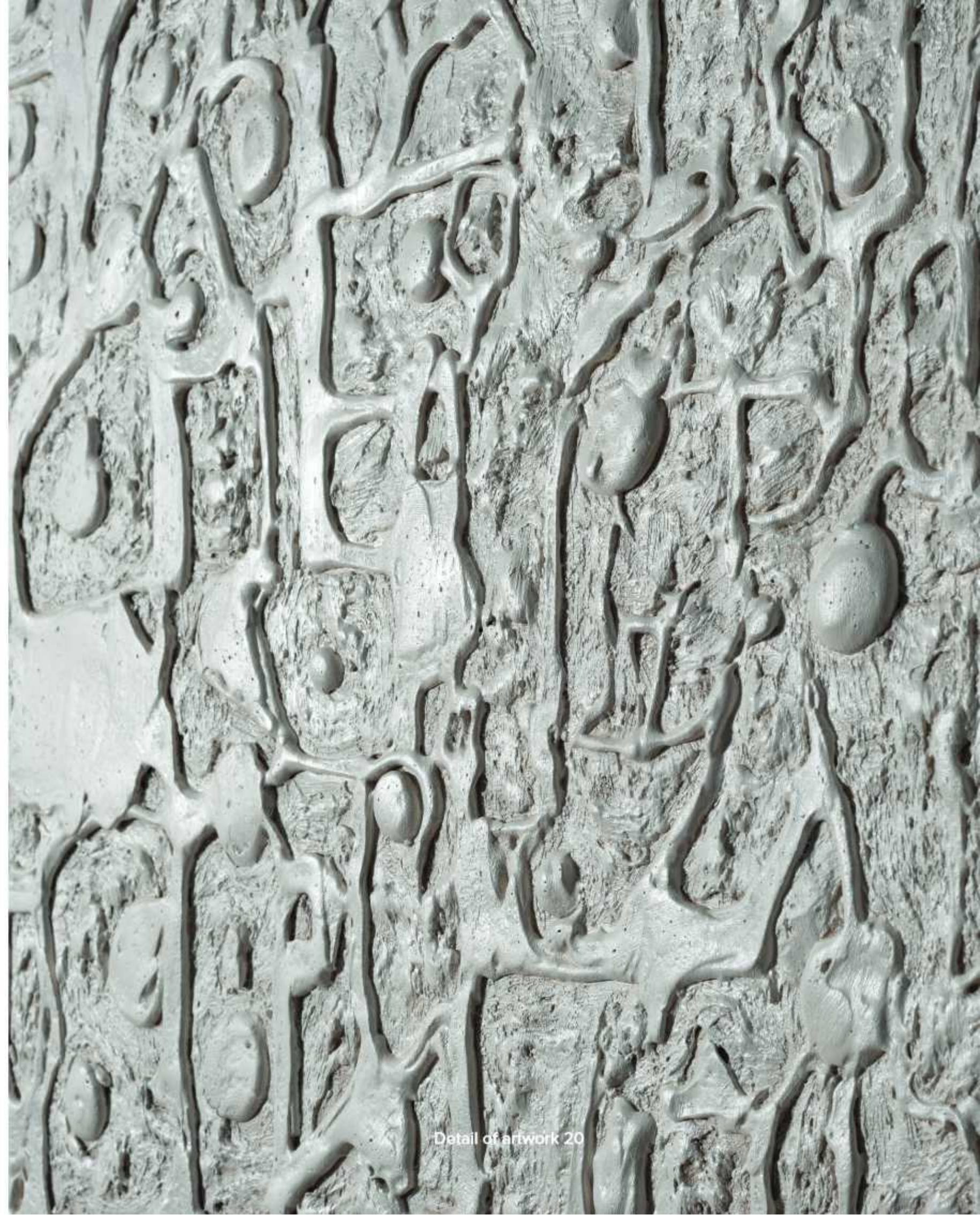


19

Size: 210 x 210 cm
 Inner size: 200 x 200 cm
 Frame finish: Guazzo gold and Ivory
 Frame: 1907G pass
 Subject: MT728
 Technique: Materico

20

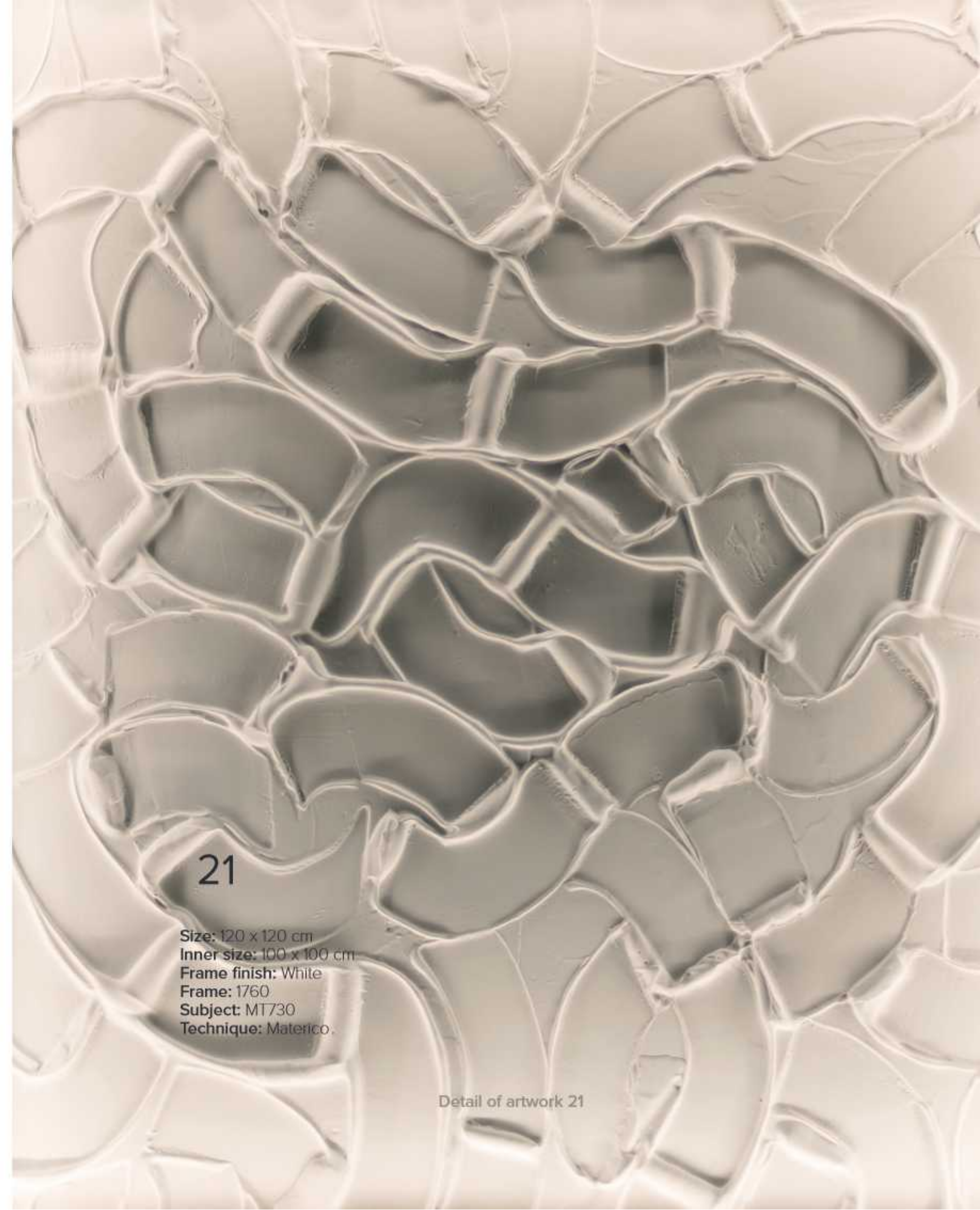
Size: 100 x 100 cm
Subject: MT729
Technique: Materico



Detail of artwork 20



Our artworks are versatile and can suit a range of settings, whether formal or informal, including home interiors, offices, and reception rooms. In this particular dining room, the textured painting was intentionally created, drawing inspiration from the graceful curves of the chandelier and the soft, light tones that define the room and its furnishings. The careful attention to detail in the artwork creates a harmonious connection between the painting and the surrounding environment.



21

Size: 120 x 120 cm
Inner size: 100 x 100 cm
Frame finish: White
Frame: 1760
Subject: MT730
Technique: Materico

Detail of artwork 21



23

Size: 206 x 126 cm
Inner size: 200 x 120 cm
Frame finish: Black
Frame: 1907
Subject: MT732
Technique: Materico



Detail of artwork 23

24



24

Size: 112 x 112 cm
Inner size: 110 x 110 cm
Frame finish: Black
Frame: WB
Subject: MT733
Technique: Materico

Size: 102 x 102 cm
Inner size: 100 x 100 cm
Frame finish: Gold
Frame: WB
Subject: MT734
Technique: Materico

25



25

The interplay between the square and circle shapes creates a dynamic and engaging visual experience. In this particular setting, the artwork serves as a focal point, drawing the viewer's attention towards it.



26

Size: 118 x 138 cm
Inner size: 100 x 120 cm
Frame finish: Silver and brown
Frame: 301
Subject: MT735
Technique: Materico

Our collection offers a unique opportunity to explore and celebrate the diversity of cultures around the world, while also incorporating these artistic expressions into contemporary design schemes. We realized a variety of subjects, including **African masks** that represent the rich cultural heritage of the continent.



27

Size: 100 x 100 cm
Subject: MT736
Technique: Materico

28



28

Size: 114 x 114 cm
Inner size: 110 x 110 cm
Frame finish: Gold and black
Frame: 1914
Subject: MT737
Technique: Materico

Size: 102 x 102 cm
Inner size: 100 x 100 cm
Frame finish: Gold
Frame: WB
Subject: MT543
Technique: Materico

29



29

The beauty of **abstract artworks** lie in their ability to spark the imagination and evoke different emotions in each viewer. This paintings provides a vast range of interpretive possibilities, allowing each

individual to create their unique vision and find personal meaning in them. It demonstrates how art has the power to connect people in unique ways, depending on their personal experience and perspective.

30



Size: 102 x 102 cm
 Inner size: 100 x 100 cm
 Frame finish: Dark gray
 Frame: WB
 Subject: MT654
 Technique: Materico

31



Size: 122 x 122 cm
 Inner size: 120 x 120 cm
 Frame finish: Gold
 Frame: WB
 Subject: MT634
 Technique: Materico

32



32

Size: 114 x 114 cm
Inner size: 110 x 110 cm
Frame finish: Gold and white
Frame: 1914
Subject: MT738
Technique: Materico

Size: 206 x 116 cm
Inner size: 200 x 110 cm
Frame finish: Guazzo Gold
Frame: 1907 G
Subject: MT739
Technique: Materico

33



33



34



Size: 112 x 112 cm
Inner size: 110 x 110 cm
Frame finish: White
Frame: WB
Subject: MT740
Technique: Materico

35



Size: 112 x 112 cm
Inner size: 110 x 110 cm
Frame finish: White
Frame: WB
Subject: MT741
Technique: Materico

36



Size: 94 x 124 cm
 Inner size: 90 x 120 cm
 Frame finish: Gold and white
 Frame: 1914
 Subject: MT742
 Technique: Materico

37



Size: 118 x 158 cm
 Inner size: 100 x 140 cm
 Frame finish: Guazzo silver and mirror
 Frame: 301 G
 Subject: MT743
 Technique: Materico



The contrast between **black and white** is a fundamental concept in art and design. Black and white are opposites on the color spectrum and represent light and dark, clear and mysterious and other opposing concepts. Together, they create a powerful **visual impact**, as the high contrast draws the viewer's attention and creates a sense of drama and tension. This expressive power is accompanied by the delicacy typical of flowers, creating a curious interplay of chromatic and symbolic contrasts.

38

Subject: MT744
Technique: Materico

jean Bon



39

Size: 104 x 144 cm

Inner size: 100 x 140 cm

Frame finish: Gold and black

Frame: 1914

Subject: MT745

Technique: Materico

Maps

Maps are a highly **abstract subjects** that take inspiration from portions of geographical maps and then stylized to the extreme. The artist's experience and expertise come into play to create seemingly random shapes that are actually carefully crafted with precision. The original color scheme for this subject typically revolves around shades of blue, but can be customized to suit the customer's requests.

Maps are a great decorative element for those who desire something far from figurative. They possess strikingly

abstract forms and intricate details that are capable of capturing the imagination and evoking a sense of wonder and curiosity. The intricate lines, curves, and shapes of these stylized maps showcase the artist's mastery and skill.

"Maps" is one of the most requested category, due to its versatility and the infinity possibilities of customization of subject's shapes and colors.

The final addition of gold or silver leaf help to add a unique and sophisticated touch, displaying a refined **elegance** that is sure to impress.

40



Size: 102 x 102 cm
 Inner size: 100 x 100 cm
 Frame finish: Gold
 Frame: WB
 Subject: MT746
 Technique: Materico

41



Size: 134 x 194 cm
 Inner size: 130 x 190 cm
 Frame finish: Gold and white
 Frame: 1914
 Subject: MT747
 Technique: Materico

42



Size: 76 x 126 cm
Inner size: 70 x 120 cm
Frame finish: Silver
Frame: 1907
Subject: MT529
Technique: Materico

43



Size: 80 x 130 cm
Inner size: 70 x 120 cm
Frame finish: Silver and white
Frame: 1907 pass
Subject: MT748
Technique: Materico

An abstract artwork featuring a textured surface with large, irregular patches of vibrant blue and teal paint. Interspersed among these patches are areas of shimmering gold leaf, which has been applied in a way that creates a sense of depth and movement. The background is a light, off-white or pale beige color, which provides a stark contrast to the rich colors of the paint and gold. The overall effect is one of organic, fluidity, with the colors and textures appearing to flow and blend together in a dynamic composition.

To apply **gold leaf**, our artists use a technique known as gilding. They begin by preparing the surface of the artwork by applying a layer a special adhesive that allows the gold leaf to adhere properly. They then carefully place the thin sheets of gold leaf onto the surface, using a brush or a gilding knife to smooth out any wrinkles or air pockets. Once the gold leaf is in place, our artists use a soft brush to gently burnish it, creating a smooth, reflective surface.

The application of gold and silver leaf is a delicate and time-consuming process that requires great skill and precision.

45

Size: 102 x 122 cm
 Inner size: 100 x 120 cm
 Frame finish: Gold
 Frame: WB
 Subject: MT631
 Technique: Materico

The power of color

We don't limit ourselves to showcasing subjects with conventional color schemes. Instead, we push the boundaries by featuring pieces characterized by bold and playful colors. In our contemporary collection, even figurative works often **stray from reality** in terms of color. This is because the artist's interpretation is crucial, as it allows viewers to see through their eyes and experience their vision. One of the most captivating aspects of art is the unpredictability of color. It has the ability to evoke different emotions and convey various meanings.

When combined with form it helps to enhance the intended message of the artwork. Through the use of color, artists can express themselves in a way that transcends words and reaches the viewer on a deeper level. Every piece in our collection is unique, and this is especially true when it comes to color. The artist's individual approach to **color selection** and application is what makes each piece stand out. Vibrant and bold colors can inspire a sense of energy and excitement, while more subdued tones can evoke feelings of calmness and tranquility.



46



Size: 94 x 144 cm
Inner size: 90 x 140 cm
Frame finish: Gold and white
Frame: 1914
Subject: MT716
Technique: Materico

47



Size: 94 x 144 cm
Inner size: 90 x 140 cm
Frame finish: Gold and white
Frame: 1914
Subject: MT715
Technique: Materico



48

Size: 134 x 184 cm
Inner size: 110 x 160 cm
Frame finish: Antique gold and red
Frame: 1750
Subject: MT750
Technique: Materico

The **kimono**, a traditional Japanese garment, is renowned for its beauty and elegance, making it a **timeless piece** of clothing that continues to inspire artists around the World. Our painting of a kimono adorned with golden phoenixes symbolizes rebirth and renewal.



49

Size: 152 x 152 cm
Inner size: 150 x 150 cm
Frame finish: Gold
Frame: WB
Subject: MT758
Technique: Materico



50



51

50

Size: 152 x 152 cm
Inner size: 150 x 150 cm
Frame finish: Natural wood
Frame: WB
Subject: MT670
Technique: Materico

51

Size: 112 x 112 cm
Inner size: 110 x 110 cm
Frame finish: White
Frame: WB
Subject: MT751
Technique: Materico

52

Size: 132 x 162 cm
 Inner size: 130 x 160 cm
 Frame finish: Gold
 Frame: WB
 Subject: MT752
 Technique: Materico





53

Size: 116 x 166 cm

Inner size: 110 x 160 cm

Frame finish: Guazzo gold

Frame: 1907G

Subject: JB180

Technique: Oil on canvas

Horses

The horse has played throughout history an important role in human culture, serving as a source of transportation, a symbol of wealth and status, and a tool for war and conquest. Despite its practical uses, the horse has also been valued for its beauty and grace, with its flowing mane and muscular build inspiring awe and admiration.

The artworks in this section of the catalog pay homage to this **majestic animal**, capturing its essence and spirit through various mediums and styles. The use of textured techniques, such as oil paint and mixed media, combined with the artists' skilled brushwork, adds depth and

dimension to the paintings, bringing the horses to life on the canvas. Beyond their visual appeal, these artworks also speak to the deeper symbolism of the horse as a representation of **freedom, strength, and elegance**. The horse's untamed spirit and wild nature have inspired humans for centuries, reminding us of the beauty and power of the natural world.

Horse heads are often inspired by sculptures, and by them, they reflect the **tridimensional shapes**.

Through their textured surfaces, these artworks capture the horse's beauty and grace, making it a truly inspiring subject for contemporary art.

54



Size: 134 x 134 cm
Inner size: 100 x 100 cm
Frame finish: White
Frame: 1908
Subject: MT215
Technique: Materico

55



Size: 112 x 112 cm
Inner size: 110 x 110 cm
Frame finish: Gold
Frame: WB
Subject: MT755
Technique: Materico

56

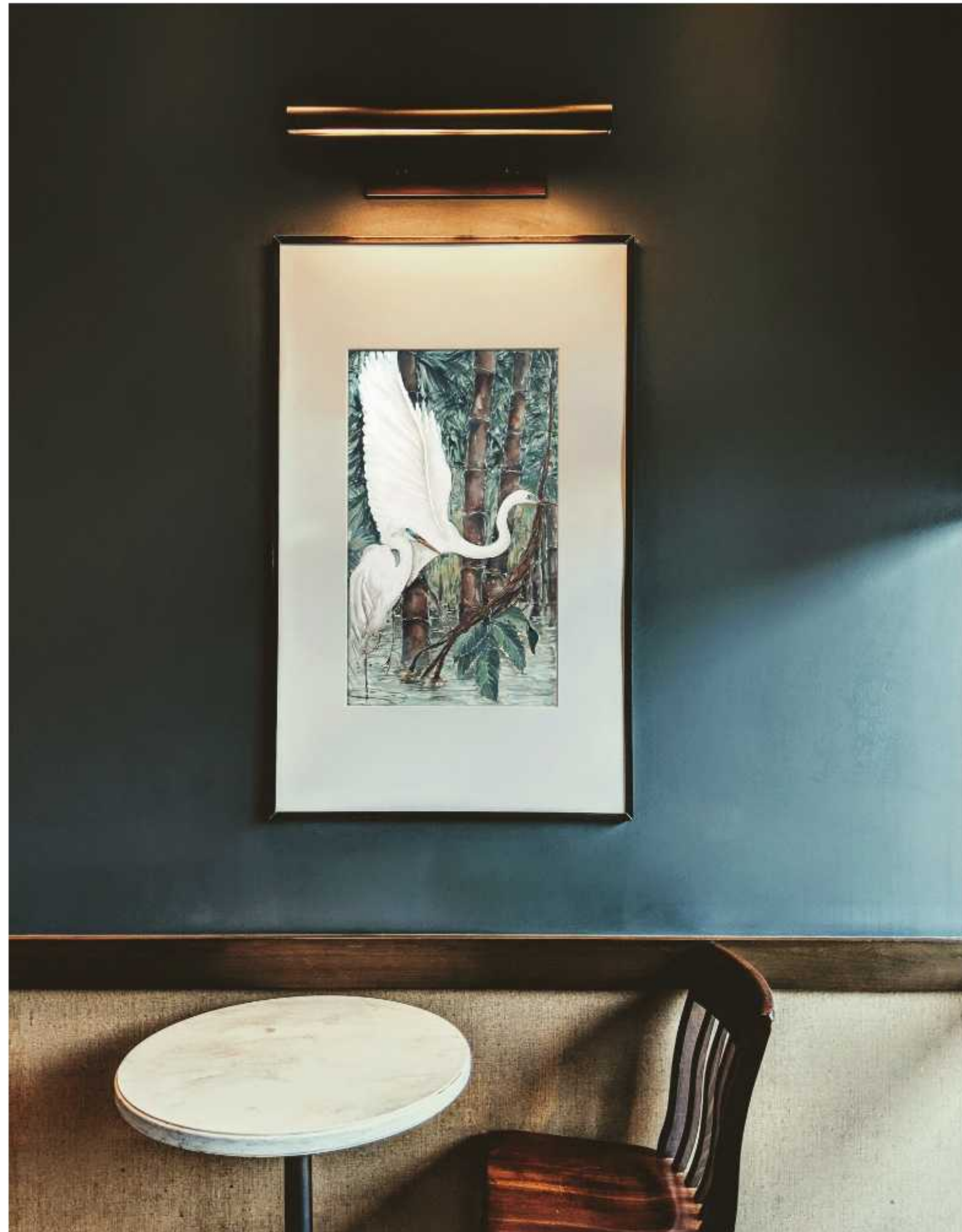


Size: 102 x 102 cm
Inner size: 100 x 100 cm
Frame finish: Gold
Frame: WB
Subject: MT756
Technique: Materico

57



Size: 82 x 82 cm
Inner size: 80 x 80 cm
Frame finish: Gold
Frame: WB
Subject: MT757
Technique: Materico



58

Size: 53 x 83 cm
 Inner size: 30 x 50 cm
 Frame finish: Black
 Frame: 1915
 Subject: AQ33
 Technique: Watercolor

Watercolor

Our watercolor selection is a tribute to the beauty and versatility of this delicate medium. Watercolor has been a popular artistic medium for centuries, known for its luminous and **transparent qualities** that allow for subtle and nuanced color gradations. Our selection showcases a diverse range of watercolor artworks, ranging **from the abstract to the figurative**.

Watercolors, whether in full color or shades of gray, can be beautifully framed to enhance their visual impact.

The use of a **passepartout** can become an integral part of the artwork itself, helping to draw the eye to the subtle nuances and delicate details of the watercolor.

Classical or modern frame will give to the piece additional style.



59

Size: 132 x 132 cm
 Inner size: 130 x 130 cm
 Frame finish: Black
 Frame: WB
 Subject: MR65
 Technique: Acrylic on canvas

Acrylics

The acrylic painting technique is a modern and versatile approach that is perfectly suited for creating artworks on various types of supports, such as canvas, wooden panels, or even paper. Compared to other techniques, acrylic **dries quickly**, allowing the artist to work rapidly and efficiently, but also requires a good mastery of the technique to avoid mistakes.

Acrylic paintings do not involve the use of "Materia," but the artist can still create three-dimensional effects through the **density of color**.

Color is the undisputed protagonist of this technique, thanks to the wide range of available tones, which enable the creation of luminous and deep effects.

The preferred subjects for acrylic paintings are **abstract** ones, which allow the artist to express their creativity and experiment with different shapes and colors. To create an acrylic painting, the artist can employ different techniques, such as washing, dry brushing, dripping, collage, and many others. The choice depends on the desired result and the artist's inspiration.



60

Size: 41 x 47 cm
 Inner size: 24 x 30 cm
 Frame finish: Lacquered glossy
 yellow
 Frame: 21

61

Size: 66 x 76 cm
 Inner size: 40 x 50 cm
 Frame finish: Lacquered glossy
 turquoise
 Frame: 85

Lacquered frames

Frames add a touch of elegance and sophistication to contemporary artworks. The use of **classic frames** creates a striking contrast of styles that catches the eye. These frames come in a variety of finishes, from natural wood to or embellished with gold or silver leaf, giving customers the freedom to choose the perfect one to enhance their artwork. In addition to these traditional options, our company now offers a new solution in the form of **spray-lacquered frames**. These frames can be finished in a multitude of

ways, including metallic, glossy, and more, allowing for a infinite array of options. By working together with our art consulting division, customers can find the ideal frame to suit their needs, preferences, and personal style. You can easily access a comprehensive selection of finishes for the frames by simply **scanning the QR code**. The QR code is continuously updated, ensuring that customers always have access to the latest information about frames and finishes.



BARJ BUZZONI

ART FOR LUXURY

VIA ORADOUR 6-A
43123 PARMA ITALY

TEL. +39 0521 242546
FAX. +39 0521 240905

INFO@BARJBUZZONI.IT

EXPORT DEPARTMENT
EXPORT@BARJBUZZONI.IT

PROJECT DEPARTMENT
PROJECT@BARJBUZZONI.IT



The photos in this catalogue cannot identically represent real artworks
colours and shades due to technical reasons.
The original colours of the artworks may have differences.



BARJ BUZZONI

ART FOR LUXURY

Via Oradour 6/A - 43123 Parma, Italy
Tel. +39 0521 242546 - info@barjbuzzoni.it
www.barjbuzzoni.it