

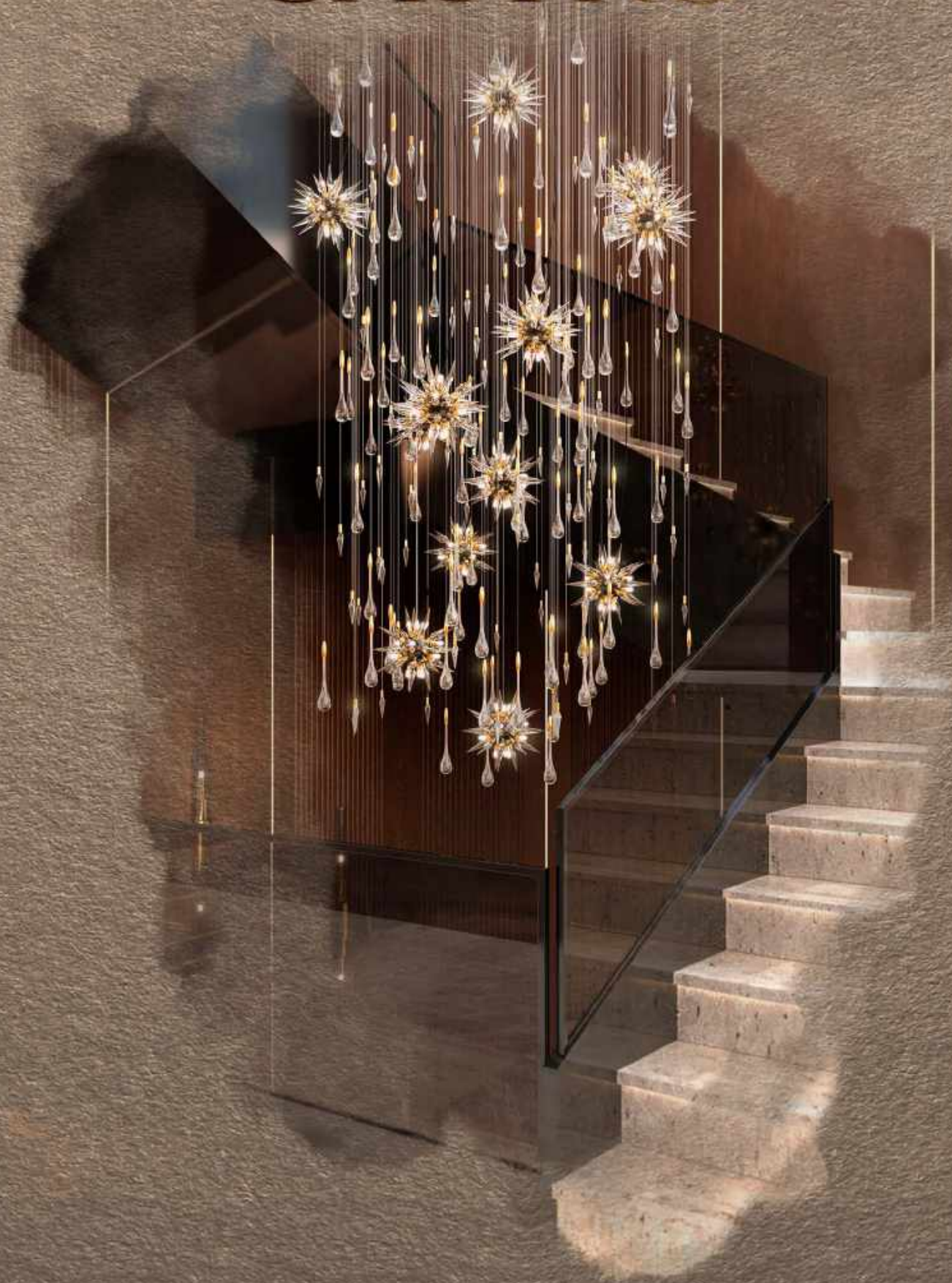


CASTRO  
LIGHTING

*40 YEARS*  
OF VISIONARY LIGHTING DESIGN



The House of  
CASTRO



The House of  
CASTRO









008

THE BRAND

- 009 HISTORY
- 010 MATERIALS
- 013 DESIGN
- 014 TECHNOLOGY

016

LIGHTING  
COLLECTIONS

- 016 MODERN
- 160 CRYSTAL
- 174 CLASSIC

184

LIFESTYLE  
COLLECTIONS

- 187 TABLES
- 193 CABINETS & CONSOLES
- 199 UPHOLSTERY
- 209 BAR FURNITURE
- 213 MIRRORS
- 215 DIVIDER

218

PROJECTS &  
PARTNERSHIPS

230

ALL DESIGNS

- 209 MODERN
- 216 CRYSTAL
- 218 CLASSIC
- 220 LIFESTYLE

245

TECHNICAL  
INFORMATION

246

CUSTOMIZATION

- 247 BRASS
- 248 CRYSTALS
- 249 LAMPSHADE FABRICS
- 251 MARBLE
- 251 WOOD
- 251 GLASS
- 251 LACQUERED
- 251 CABLES
- 252 UPHOLSTERY FABRICS



# DISTINCTIVE HANDCRAFT EXPERTS FOR MORE THAN 40 YEARS



Since 1978 Castro Lighting expressed the commitment to never forget its roots, valuing strong traditions while implementing innovative techniques regarding the meticulous handcrafted lighting production.

More than 40 years of accomplishments manifest refinement every day. Passion, devotion, and endurance, the brand's history is shaped by creators who share the same essence. The secret? Dream bigger and strive to create breathtaking lighting and timeless experiences.

The past decades brought technological advances driven by a pioneer spirit and an incessant need for the creation of extraordinary collections. The development of trailblazing designs is impelled by a single purpose:

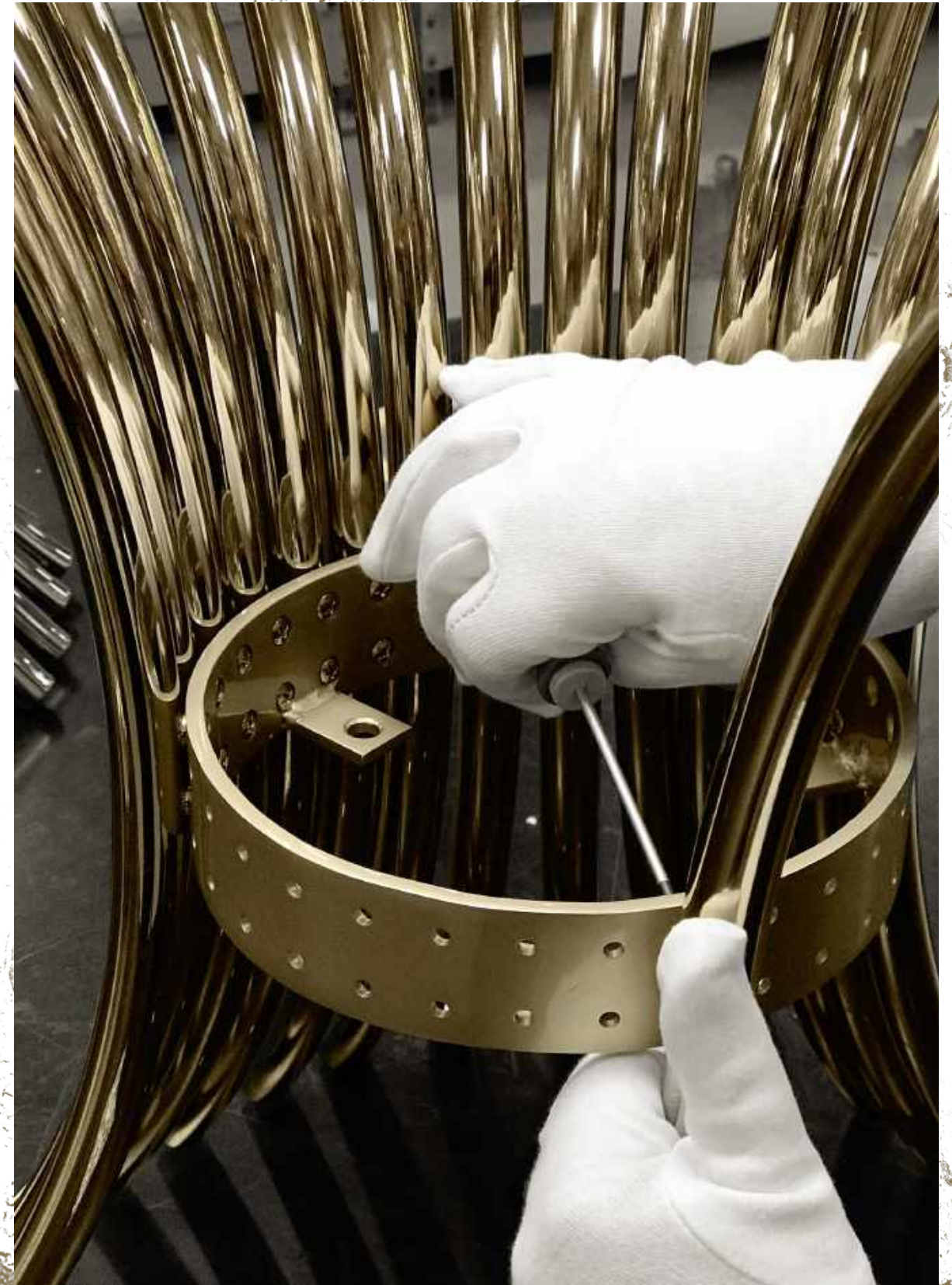
TO CREATE  
A LEGACY IN THE HISTORY  
OF LIGHTING DESIGN



# BRASS CRAFTING MASTERS WITH VISION AND EXPERTISE

Creative brass crafting is an embodiment of an artist's vision, brought to life by their effort and expertise. Castro Lighting's production takes place in its factories in Portugal, where the best quality lighting solutions are created.

The manufacturing process is supervised by experienced professionals who are constantly looking for new and original techniques and approaches. The handling of brass is the history and foundation of Castro Lighting, being its responsibility to inspire and empower future generations to keep the tradition alive. Hand-wrought work can never be entirely replaced by machinery.





# FROM MODERN TO CLASSIC, THE IDEAL LIGHTING FOR ANY PROJECT



Throughout the years, while gathering the desirable experience, Castro Lighting took advantage of its proficiency in brass-work production. This allowed the development of more up-to-date, bold, and fresh forms in design. While classic style and influences were the foundation of the brand, a new approach grew within.

The latest collections rejoice with audacity, privilege, and strong statements. The use of noble materials and selected finishes, allied with a youthful and simpler approach to design, turned into a new signature for the brand. A claim of opulence, grandeur, and sophistication.



# THE LATEST INNOVATION MEETS HANDCRAFT PRODUCTION TECHNIQUES

With the perfect combination of ethics, motivation, hard-work and passion for industrial design, as well as a fascinating journey of discovery, Castro Lighting became internationally known.

When it comes to brass-work, the brand is famous for its singularity, extraordinary quality, and beauty. The ultimate fusion between the authenticity of traditional Portuguese metal-work techniques, artistic masters, and creative craftsmanship, continuously deliver the next step in innovation. Thusly, a wide range of products in different styles, from classic to modern, is created to provide the ideal lighting for any ambience.

Every year represents a new challenge for those who genuinely love and admire majestic designs. Castro Lighting represents a reference point in acquiring customizable lamps in different materials, finishes, and dimensions.

Every lamp perfectly fits the most luxurious interiors, reflecting elegance and fantasy. New collections are developed alongside the best industry players to re-invent functionality, individuality, and beauty.





# MODERN COLLECTIONS

Modern design is linked to the mid-20th century, with roots in both German and Scandinavian Styles, where a sense of simplicity and clean lines is included in every element of the interior décor. Throughout the years, while gathering experience, Castro Lighting has been taking advantage of its proficiency in brass-work, developing more up-to-date and fresher designs each year, and expressing its own idea of modernity, elegance, functionality, and versatility.

Aiming to provide professionals with innovative modern designs, the collections get a twist with a fresh classic tone that mixes minimal textures and bold geometric forms with polished finishes and asymmetrical balance.

The choice of luxurious finishes and selected materials along with Crystals introduces an unforgettable signature of inspiring effortless luxury collections for modern interiors.

018	MONDRIAN
024	SKYLAR
028	STREAMLINE
036	ARCADE
042	MASTERY
046	METIS
052	SAFI
056	ZENITH
060	AVANY
064	AVOLTO
068	TWIST
070	BLAZE
072	LOTUS
076	ROYAL
080	HALMA
086	KINGDOM
088	LABICS
092	MAEVE
096	SPACIUM
098	ALCHEMY
102	HALO
108	GIO
112	FLUTE
114	FLUSSO
116	CRYSTALINE
118	NOLAN
120	TRIUMPH
124	METIER
128	ELVEN
132	CHANTEL
136	SAVOYE
140	ECLIPSE
142	INTENSE
142	GALILEI
144	HEMERA
144	LOUVRE
144	MADISON
146	EUPHORIA
146	AUREA

149	RAVEL
150	GALAXY
150	BOLERO
151	PRISMA
151	SONATA
153	RIVIERA
153	LIBERTY
155	MANHATTAN
155	BAUHAUS
155	TAYLOR
156	SPARTA
156	SATURN
159	PETRA







Piet Mondrian is recognized for the purity of his abstractions, as he radically simplified the elements of his paintings to reflect his perception of the world as opposites and asymmetry. This painter's unique artwork moved the designers to develop the Mondrian Collection. Composed of geometrical squared shapes and cascading crystals, this is an interpretation of dynamism and elegance.



SUSPENSION 9180.170X55

DIMENSIONS: H.74CM - W.170CM - D.55CM WEIGHT: NET 54KG  
LAMPS: N°24 | G9 MATERIAL: BRASS/CRYSTAL



SUSPENSION 9180.80

DIMENSIONS: H.70CM - Ø.80CM WEIGHT: NET 30KG  
LAMPS: N°18 | G9 MATERIAL: BRASS/CRYSTAL



SUSPENSION 9183.80

DIMENSIONS: H.40CM - Ø.80CM WEIGHT: NET 23,3KG  
LAMPS: N°12 | G9 MATERIAL: BRASS/CRYSTAL



MONDRIAN SUSPENSION



WALL LIGHT 9182.6

DIMENSIONS: H.58CM - W.42,5CM - D.15CM WEIGHT: NET 8KG  
LAMPS: N°6 | G9 MATERIAL: BRASS/CRYSTAL



WALL LIGHT 9182.4

DIMENSIONS: H.40CM - W.26CM WEIGHT: NET 4KG  
LAMPS: N°4 | G9 MATERIAL: BRASS/CRYSTAL









SUSPENSION 9870.100

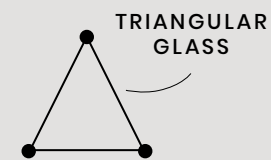
DIMENSIONS: H.35CM - Ø.100CM WEIGHT: NET 45KG  
LAMPS: N°36 | G9 MATERIAL: BRASS/GLASS

Skylar Collection has a stunning glass and brass design that is a “one in a million” kind. Designed to impress, it brings a special allure and refined lighting detailing to the most exquisite interiors. Clean lines with softer edges create a streamlined silhouette and vigorous form, which reveal a natural balance between a traditional and futuristic vision in lighting design. It’s perfect to create an effortless luxury for contemporary living.



WALL LIGHT 9871.40

DIMENSIONS: H.65CM - W.40CM - D.25CM WEIGHT: NET 9,5KG  
LAMPS: N°6 | G9 MATERIAL: BRASS/GLASS



FLOOR LAMP 21.012

DIMENSIONS: H.170CM - Ø.40CM WEIGHT: NET 20KG  
LAMPS: N°6 | G9 MATERIAL: BRASS/GLASS





SUSPENSION 9270.4

DIMENSIONS: H.90CM - Ø.100CM WEIGHT: NET 85KG  
LAMPS: N°51 | G9 MATERIAL: BRASS





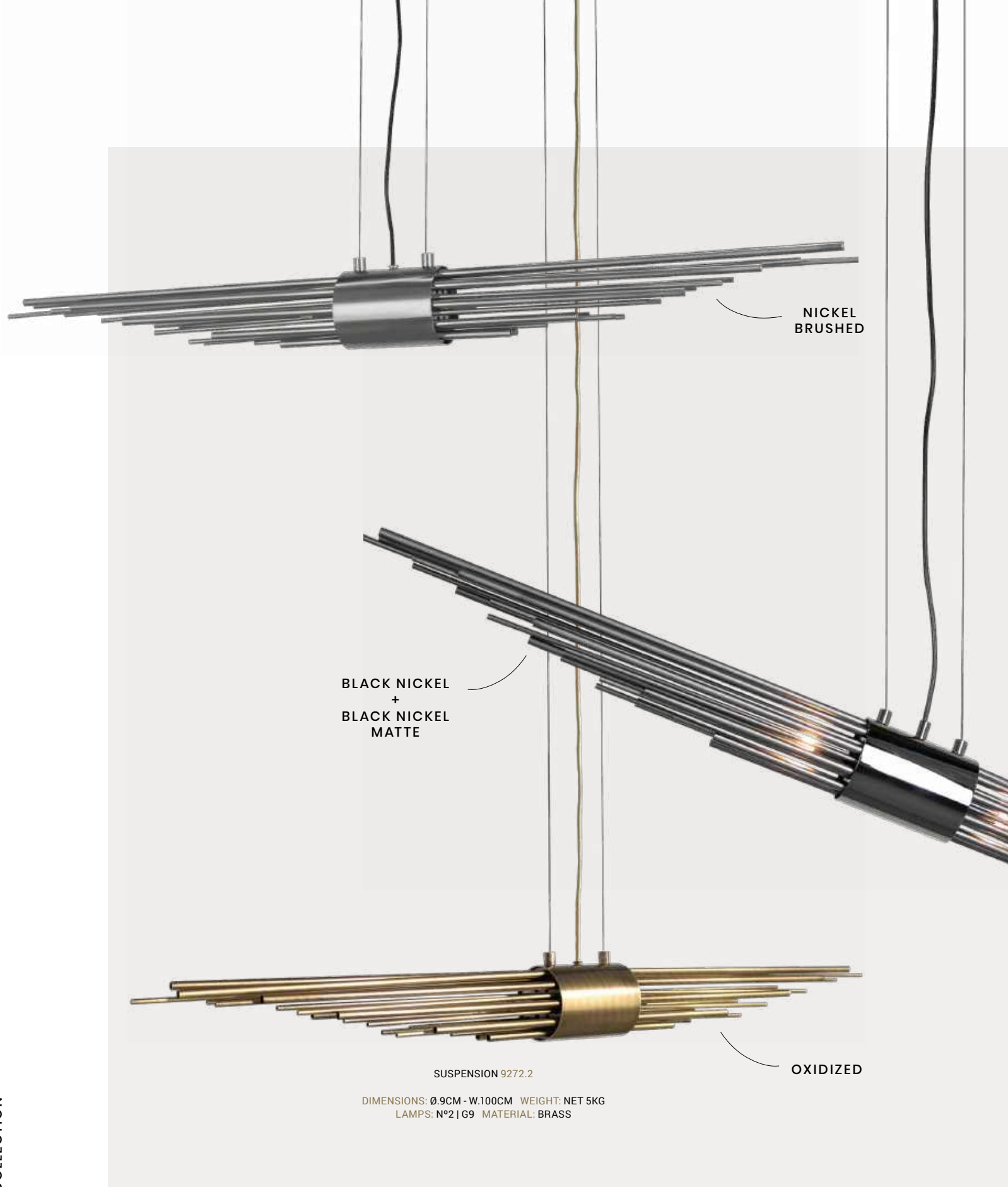
SUSPENSION 9270.100  
DIMENSIONS: H.26CM - Ø.100CM WEIGHT: NET 44KG  
LAMPS: N°18 | G9 MATERIAL: BRASS



SUSPENSION 9270.150X40  
DIMENSIONS: H.26CM - W.150CM - D.40CM WEIGHT: NET 52KG  
LAMPS: N°20 | G9 MATERIAL: BRASS

Streamline Collection was conceived to be distinctive and to stand out for its design, becoming the perfect fit for curated interiors that combine a diversity of styles. Long gold-plated brass tubes give the design a whole exclusive and deluxe look, setting another level by its unique appearance. This recipe of rich materials and sleek lines inspired by art-deco architecture make the Streamline collection desirable.





NICKEL  
BRUSHED

BLACK NICKEL  
+  
BLACK NICKEL  
MATTE

OXIDIZED

SUSPENSION 9272.2

DIMENSIONS: Ø.9CM - W.100CM WEIGHT: NET 5KG  
LAMPS: N°2 | G9 MATERIAL: BRASS



WALL LIGHT 9271.2

DIMENSIONS: H.67CM - W.9CM WEIGHT: NET 3,3KG  
LAMPS: N°2 | G9 MATERIAL: BRASS





FLOOR LAMP 9270.10

DIMENSIONS: H.184CM - Ø.32CM WEIGHT: NET 21KG  
LAMPS: N°10 | G9 MATERIAL: BRASS



TABLE LAMP 9273.1

DIMENSIONS: H.68CM - Ø.40CM WEIGHT: NET 8,25KG  
LAMPS: N°1 | E27 MATERIAL: BRASS/FABRIC



TABLE LAMP 9274.2

DIMENSIONS: H.67CM - Ø.25CM WEIGHT: NET KG  
LAMPS: G9 MATERIAL: BRASS



TABLE LAMP 9270.5

DIMENSIONS: H.70CM - Ø.20CM WEIGHT: NET 8,25KG  
LAMPS: N°5 | G9 MATERIAL: BRASS









SUSPENSION 9880.150X40

DIMENSIONS: H.40CM - W.150CM - D.40CM WEIGHT: NET 48KG  
LAMPS: N°28 | G9 MATERIAL: BRASS/GLASS

Arcade Collection masterfully combines noble brass and mesmerizing glass. It creates an aerial atmosphere, full of bright and playful amber rays of light. These opulent designs bring sensuality and a state of tender contemplative attitude and openness. A soft light that transmits class and purity to every space. It is an intriguing lighting solution for the most demanding tastes and it places a particular emphasis on the décor.



SUSPENSION 9880.100

DIMENSIONS: H.40CM - Ø.100CM WEIGHT: NET 50KG  
LAMPS: N°36 | G9 MATERIAL: BRASS/GLASS



WALL LIGHT 9881.40

DIMENSIONS: H.51CM - W.40CM - D.20CM WEIGHT: NET 9KG  
LAMPS: N°5 | G9 MATERIAL: BRASS/GLASS

FEATURED IN  
INTERIORES  
SPAIN







FLOOR LAMP 9882.20

DIMENSIONS: H.165CM - Ø.40CM WEIGHT: NET 33.5KG  
LAMPS: N°12 | G9 MATERIAL: BRASS/GLASS



CRYSTAL GLASS

ANTRACITE GLASS

TOPAZ GLASS









SUSPENSION 9301.80

DIMENSIONS: H.50CM - Ø.80CM WEIGHT: NET 20KG  
LAMPS: N°18 | G9 MATERIAL: BRASS/CRYSTAL



WALL LIGHT 9300.30 / .25 / .14

DIMENSIONS: H.30CM - W.23CM / H.25CM - W.19CM / H.14CM - W.11CM  
WEIGHT: NET 1,5/ 0,6/ 0,3KG LAMPS: N°1 | G9 MATERIAL: BRASS

Mastery Collection does justice to its name as the book Mastery by Robert Greene. Having the brass plates as a highlight, along with its modern and singular design, it pampers the eyes while giving an opportunity to be creative. Mastery's powerful yet smooth lines create an organic movement of lights and shadows that suggest elegance and glamour. These sumptuous design will stand out in the most luxurious and exclusive interior décors.



WALL LIGHT 9300.190X70

DIMENSIONS: H.70CM - W.190CM WEIGHT: NET 20,6KG  
LAMPS: N°15 | G9 MATERIAL: BRASS/WOOD



FEATURED IN  
AD ITALY

AVAILABLE IN HAMMERED, BRUSHED AND OXIDIZED FINISHES









SUSPENSION 9840.100  
DIMENSIONS: H.5CM - Ø.100CM WEIGHT: NET 9KG  
LAMPS: N°24 | G9 MATERIAL: BRASS/CRYSTAL



SUSPENSION 9640.100  
DIMENSIONS: H.5CM - Ø.100CM WEIGHT: NET 9KG  
LAMPS: N°24 | G9 MATERIAL: BRASS/CRYSTAL



SUSPENSION 9642.100  
DIMENSIONS: H.5CM - Ø.100CM WEIGHT: NET 9KG  
LAMPS: N°24 | G9 MATERIAL: BRASS

Metis Collection represents minimal luxury style. Sleek shapes along with crystals reveal a pure balance of delicacy and sophistication. It is designed to bring a special allure and sensuality to your interiors. This design is a modern statement of self-expression that shines through with luxurious accents. With an avant-garde spirit that combines both functional sophistication and elegant simplicity.



FEATURED IN  
ELLE DECOR  
INDIA





SUSPENSION 9640.170X40

DIMENSIONS: H.5CM - W.170CM - D.40CM WEIGHT: UNDER REQUEST  
LAMPS: N°28 | G9 MATERIAL: BRASS/CRYSTAL



SUSPENSION 9641.100

DIMENSIONS: H.5CM - W.100CM - D.50CM  
LAMPS: N°12 | G9 MATERIAL: BRASS/CRYSTAL



METIS LINEAR SUSPENSION & PENELOPE BAR CHAIR



SUSPENSION 9640.3

DIMENSIONS: H.90CM - W.15CM WEIGHT: UNDER REQUEST  
LAMPS: N°24 | G9 MATERIAL: BRASS/CRYSTAL



SUSPENSION 9643.40

DIMENSIONS: H.5CM - W.40CM - D.40CM WEIGHT: NET 4KG  
LAMPS: G9 MATERIAL: BRASS/CRYSTAL





SUSPENSION 9821.150X50

DIMENSIONS: H.50CM - W.50CM - D.150CM WEIGHT: NET 50KG  
LAMPS: N°22 | G9 MATERIAL: BRASS/GLASS





SUSPENSION 8850.19

DIMENSIONS: H.265CM - Ø.80CM WEIGHT: NET 31,5KG  
LAMPS: N°19 | G9 MATERIAL: BRASS/CRYSTAL





SUSPENSION 8851.10

DIMENSIONS: H.55CM - Ø.80CM WEIGHT: NET 22KG  
LAMPS: N°10 | G9 MATERIAL: BRASS/CRYSTAL



SUSPENSION 8859.9

DIMENSIONS: H.50CM - Ø.75CM WEIGHT: NET 12,8KG  
LAMPS: N°9 | G9 MATERIAL: BRASS/CRYSTAL



PENDANT 8852.24

DIMENSIONS: H.48CM - Ø.7CM WEIGHT: NET 1KG  
LAMPS: N°1 | G9 MATERIAL: BRASS/CRYSTAL



FLOOR LAMP 8855.3

DIMENSIONS: H.172CM - Ø.40CM WEIGHT: NET 11,6KG  
LAMPS: N°3 | G9 MATERIAL: BRASS/CRYSTAL



WALL LIGHT 8854.4

DIMENSIONS: H.55CM - W.35CM - D.15CM WEIGHT: NET 4,2KG  
LAMPS: N°4 | G9 MATERIAL: BRASS/CRYSTAL



TABLE LAMP 8856.1

DIMENSIONS: H.65CM - Ø.40CM WEIGHT: NET 3,7KG  
LAMPS: N°1 | E27 MATERIAL: BRASS/FABRIC

## CREATE YOUR ATMOSPHERE

Safi Collection is ideal for large hallways, mezzanines and long staircases, fitting in a vast variety of décors. Its design is a masterpiece with extravagant shapes, capable of transforming every space into an exquisite scenery. The combination of several lighting pendants creates an intriguing and fascinating lighting design where the details are a perfect balance.







The stunning natural beauty of Zenith Suspension is born from the intense shining star constellations presented in the celestial sphere. The name itself represents the peak of life where one becomes serene with its self-being. Highlighting the natural shape of a group of stars forming this minimalistic but strong-will suspension.

SUSPENSION 9900.160X70

DIMENSIONS: H.48CM - L.164CM - W.70CM WEIGHT: UNDER REQUEST  
LAMPS: N°10 | G9 MATERIAL: BRASS



PENDANT | FLOOR







FLOOR LAMP 9571.6

DIMENSIONS: H.180CM - Ø.58CM WEIGHT: NET 16KG  
LAMPS: N°6 | G9 MATERIAL: BRASS



PENDANT 9570.25

DIMENSIONS: H.110CM - Ø.24CM WEIGHT: NET 11KG  
LAMPS: N°6 | G9 MATERIAL: BRASS



BLACK NICKEL  
+  
BLACK NICKEL  
MATTE

## PLAY WITH THE FINISHES!

+ MORE OPTIONS P.211

Avany Collection features long plated brass tubes in both rectangular and circular shapes. The mix of finishes give the design a whole exclusive and charming look, setting another level by its distinctive appearance. Artistic design and daring innovative techniques make the unforgettable signature. This collection has its very own creative vision in lighting aesthetics: authenticity, freshness, and boldness.



SUSPENSION | PENDANT | WALL | TABLE



PROJECT BY MEBLOLIGHT / FLOW INTERIORS



PENDANT 9120.1

DIMENSIONS: H.85CM - Ø.7 CM WEIGHT: NET 1,8KG  
LAMPS: N°1 | G9 MATERIAL: BRASS/CRYSTAL



Avolto Collection is an expression of contemporary lighting style, designed to be an impressive and natural spotlight in the most demanding interior projects. The gold-plated brass tubes are hammered by the hands of experienced craftsmen and adorned with clear Crystals. Elegance, simplicity, subtle sophistication, texture, and clean lines define this charming design.



WALL LIGHT 9121.2

DIMENSIONS: H.85CM - W.7CM - D.10CM WEIGHT: NET 1,8KG  
LAMPS: N°2 | G9 MATERIAL: BRASS/CRYSTAL



SUSPENSION 9120.3

DIMENSIONS: H.125CM - Ø.40CM WEIGHT: NET 8KG  
LAMPS: N°3 | G9 MATERIAL: BRASS/CRYSTAL



TABLE LAMP 9122.4

DIMENSIONS: H.90CM - W.25CM WEIGHT: NET 9KG  
LAMPS: N°4 | G9 MATERIAL: BRASS/CRYSTAL/MARBLE



WALL LIGHT 9121.4

DIMENSIONS: H.99CM - W.14CM - D.10CM WEIGHT: NET 3,6KG  
LAMPS: N°4 | G9 MATERIAL: BRASS/CRYSTAL





Twist Collection materializes the concept of the twist dance in its design. The combination of glass with the brass structure gives this one of a kind design a sense of refinement that is unusually seen. Its elegance also reminds us of the famous Victoria waterfalls in Zimbabwe, as it gives the illusion of falling water. It was conceived to fulfill wide spaces like luxurious hotel lobbies and large exquisite staircases - unique interiors that seek to enhance luxury delight.



SUSPENSION 5915

DIMENSIONS: H.220CM - Ø.120CM WEIGHT: NET 116KG  
LAMPS: N°40 | G9 MATERIAL: BRASS/GLASS





Blaze Collection is a true display of Castro Lighting's modern handcrafting skills, composed by alternating pendants of gold-plated brass, prime glass, and light bulbs assembled by hand. It creates a blazing effect as the light bursts through the small breaches of space formed between them. A vigorous and extravagant design that will leave you gasping and wondering.

SUSPENSION 9610.150

DIMENSIONS: H.270CM - Ø.150CM WEIGHT: NET 184KG  
LAMPS: N°56 | G9 MATERIAL: BRASS/GLASS









**SUSPENSION 5917.60**  
 DIMENSIONS: H.80CM - Ø.60CM WEIGHT: NET KG  
 LAMPS: N°18 | G9 MATERIAL: BRASS/GLASS

Lotus Ciollection aims to represent this simplicity and splendor as its design and form are almost identical to the real flower's shape, incorporating its luxurious feel. The use of noble materials and valuable traditional manufacturing techniques makes this collection unique, as the 24k gold arms with delicate glass increase the visual complexity. The glasses remind us of the calm falling petals from the flower that reflect its simplicity as well as shades of elegance and beauty.



**PENDANT 9160.100**

DIMENSIONS: H.60CM - Ø.40CM WEIGHT: NET 20KG  
 LAMPS: N°6 | G9 MATERIAL: BRASS/GLASS



**TABLE LAMP 5918.25**

DIMENSIONS: H.70CM - Ø.35CM WEIGHT: NET KG  
 LAMPS: N°3 | G9 MATERIAL: BRASS/GLASS



**FLOOR LAMP 5919.40**

DIMENSIONS: H.170CM WEIGHT: NET 25KG  
 LAMPS: N°3 | G9 MATERIAL: BRASS/GLASS





PROJECT BY LOVE DESIGN



SUSPENSION 9160.100

DIMENSIONS: H.100CM - Ø.100CM WEIGHT: NET 65KG  
LAMPS: N°27 | G9 MATERIAL: BRASS/GLASS



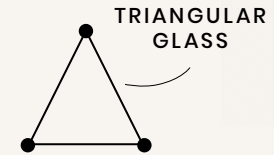
FLOOR LAMP 9162.40

DIMENSIONS: H.171CM - Ø.40CM WEIGHT: NET 20KG  
LAMPS: N°6 | G9 MATERIAL: BRASS/GLASS



PENDANT 9160.40

DIMENSIONS: H.56CM - Ø.40CM WEIGHT: NET 20KG  
LAMPS: N°6 | G9 MATERIAL: BRASS/GLASS



WALL LIGHT 9161.40

DIMENSIONS: H.56CM - W.40CM - D.25CM WEIGHT: NET 9,5KG  
LAMPS: N°5 | G9 MATERIAL: BRASS/GLASS

Over the times, Royal families gathered in the most exclusive and luxurious events, where ostentation and opulence were represented through the décor. Royal Collection incorporates the luxury and lavishness of the Royal Era. Composed of brass and glass, the different levels of this hand-made collection are a remarkable display of how a modern touch can elevate a traditional design.









SUSPENSION 9620.80

DIMENSIONS: H.60CM - Ø.80CM WEIGHT: NET 40KG  
LAMPS: N°48 | G9 MATERIAL: BRASS/GLASS



PENDANT 9620.1

DIMENSIONS: H.60CM - Ø.19CM WEIGHT: NET 3KG  
LAMPS: N°6 | G9 MATERIAL: BRASS/GLASS

Halma Collection was designed to celebrate the fusion of noble materials, as well as simple and delicate geometry. Made with a structure of brass involved by clear crystal glass, this design unpredictably fuses the two materials in an effortless and original manner, granting it a cohesive and deluxe look. An extremely versatile fixture with an exclusive beauty and elegance.

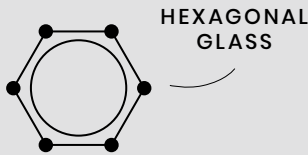






TABLE LAMP 9621.6

DIMENSIONS: H.65CM - Ø.23CM  
LAMPS: N°6 | G9 MATERIAL: BRASS/GLASS



HALMA TABLE LAMP & MARIE CONSOLE



WALL LIGHT 9621.20

DIMENSIONS: H.60CM - W.18CM  
LAMPS: N°48 | G9 MATERIAL: BRASS/GLASS



PROJECT BY ALENA CHASHKINA



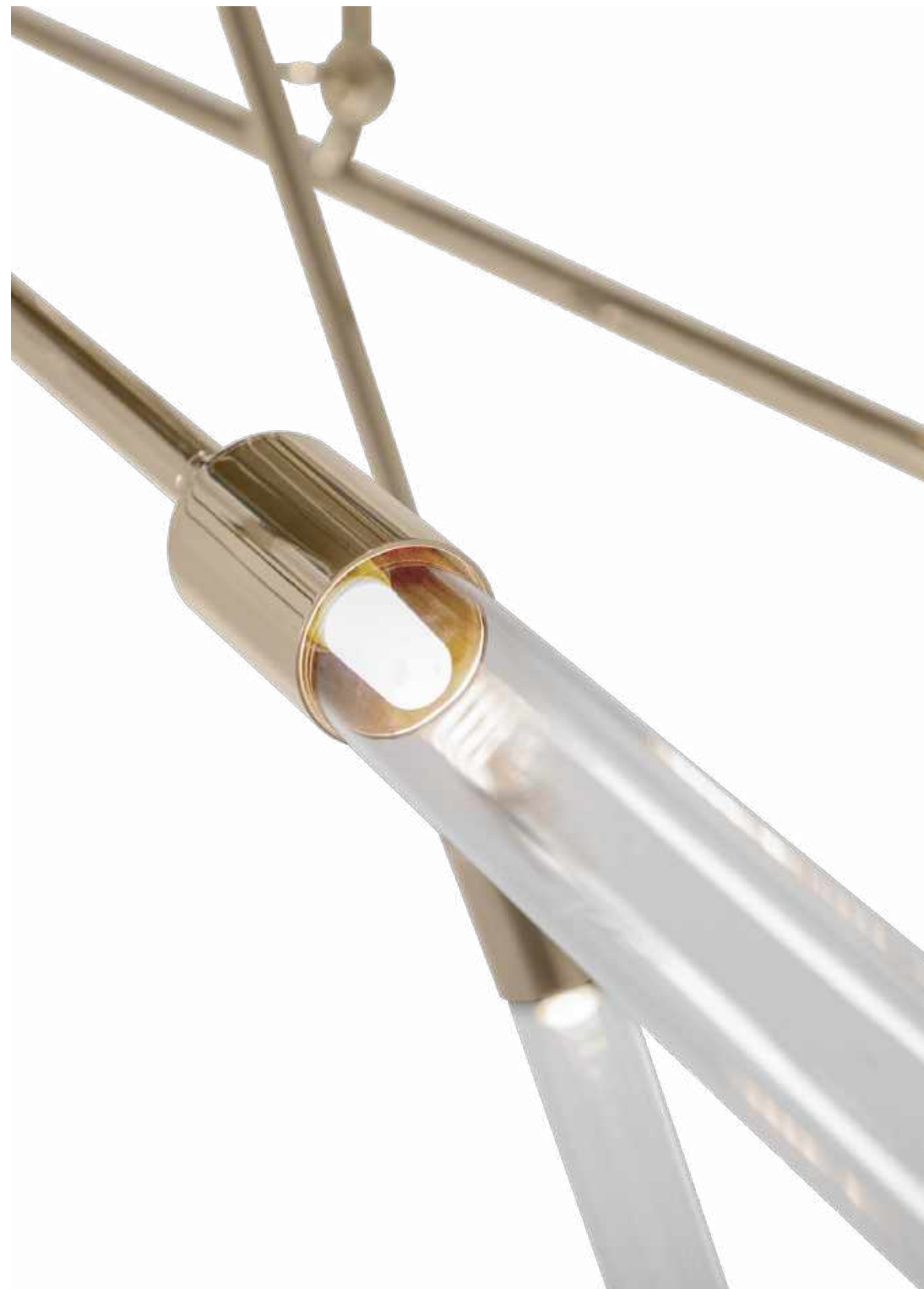
SUSPENSION 9230.170X40

DIMENSIONS: H.55CM - W.170CM - D.40CM WEIGHT: NET 80KG  
LAMPS: N°18 | G9 MATERIAL: BRASS/GLASS

Inspired by the longest recorded reigns of any monarch of a sovereign country in European history, Louis' XIV, at a time when France was the leading European power, Kingdom Collection transmits this idea of control and magnificence. This design aims to be the highlight of all home interiors as a striking piece, capable of creating a unique and exclusive atmosphere, where the light shines and spreads through the various glass elements.

AVAILABLE IN BRUSHED AND OXIDIZED FINISHES







SUSPENSION 9710.10

DIMENSIONS: H.160CM - W.140CM - D.150CM WEIGHT: NET 15KG  
LAMPS: N°10 | G9 MATERIAL: BRASS/GLASS



PENDANT 9710.2

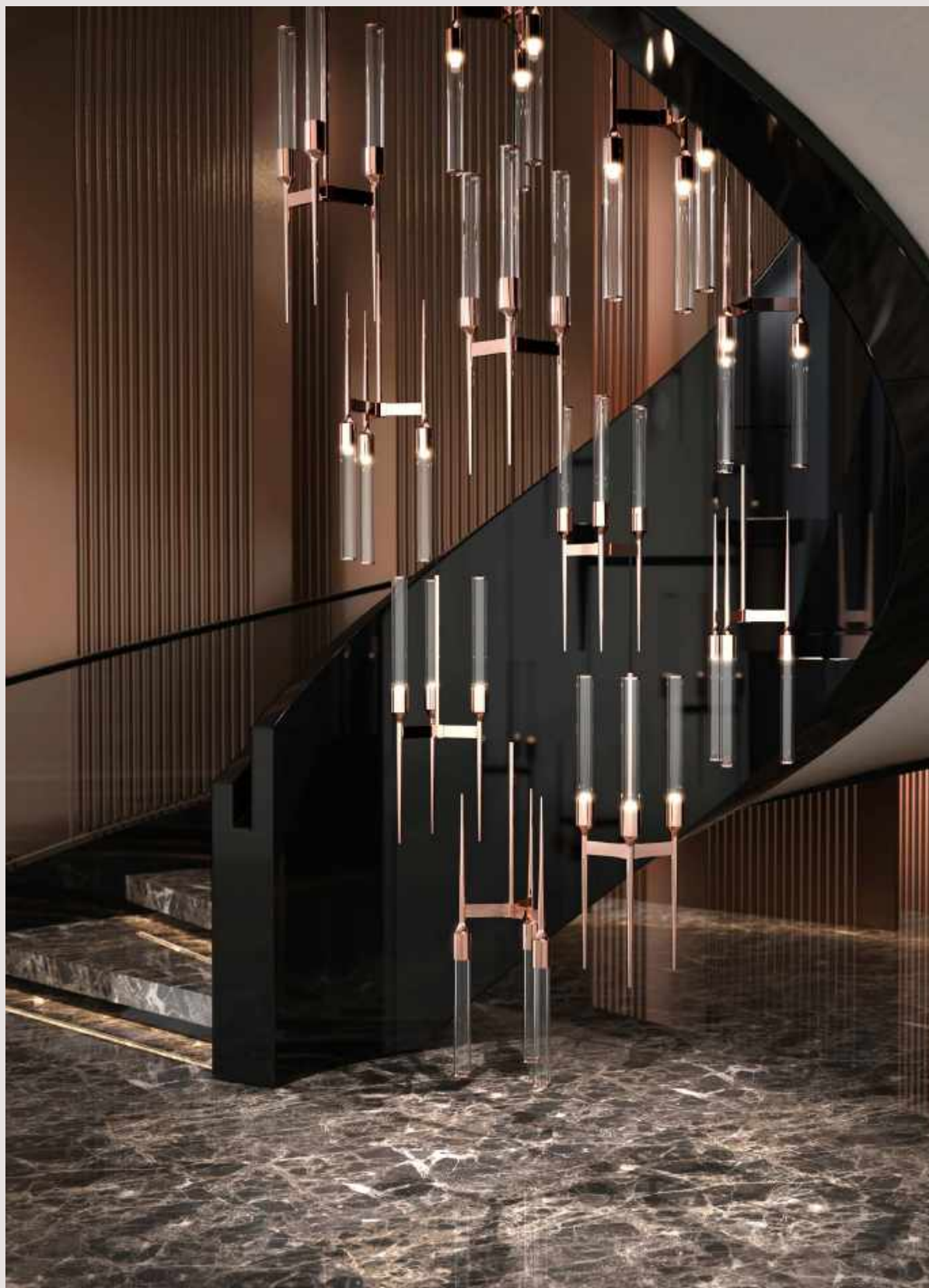
DIMENSIONS: H.80CM - W.131CM WEIGHT: NET 3KG  
LAMPS: N°2 | G9 MATERIAL: BRASS/GLASS

ADJUSTABLE  
LAMP SHADE

ADJUST  
THE LAYERS

Labics Collection allows you to express yourself through lighting aesthetics and bold decoration. Dynamic lines create an organic movement of subtle brass tubes, as straight as arrows, completing the handmade design with elegant glass. Assembled over several brass tubes, they have a daring adjustable angularity. This futuristic lighting design symbolically portrays the development of modern design and urban architecture.





SUSPENSION 9741.9

DIMENSIONS: H.65CM - Ø.29CM WEIGHT: NET 70KG  
LAMPS: N°27 | G9 MATERIAL: BRASS/CRYSTAL





PROJECT BY ASTOUNDING INTERIORS



SUSPENSION 8864.80

DIMENSIONS: H.8CM - Ø.80CM WEIGHT: NET 13KG  
LAMP: N°18 | G9 MATERIAL: BRASS/CRYSTAL





SUSPENSION 8864.2

DIMENSIONS: H.16CM - Ø.80CM WEIGHT: NET 15KG  
LAMPS: N°18 | G9 MATERIAL: BRASS/CRYSTAL

Maeve Collection was named after the strong-willed, ambitious, and warrior-queen Maeve of Ireland, whose passion led warriors to fight for her beliefs. This design has an enormous value due to its bespoke quality and magnificence. Its gold-plated brass structure is hammered by the hands of experienced lighting artisans, as well as beautiful Crystals are individually assembled by hand at the bottom.



SUSPENSION 8860.80

DIMENSIONS: H.7CM - Ø.80CM WEIGHT: NET 13KG  
LAMPS: N°18 | G9 MATERIAL: BRASS/CRYSTAL



WALL LIGHT 8861.40

DIMENSIONS: H.7CM - W.40CM - D.22CM WEIGHT: NET 2,25KG  
LAMPS: N°2 | G9 MATERIAL: BRASS/CRYSTAL





Spacium, the Latin word for "space", is an exceptionally elegant collection, as it reflects the power and grandeur its name offers. Only composed of crystals, it reflects the light in a very specific and singular way, imposing a dynamic look to the interior. The sleek detailing adds visual richness and create a concept of magnificence and unique beauty, evoking strong joyful sensations.



SUSPENSION 9190.100

DIMENSIONS: H.10CM - Ø.100CM WEIGHT: NET 22,8KG  
LAMP: N°12 | G9 MATERIAL: BRASS/CRYSTAL





SUSPENSION

DIMENSIONS: H.10CM - W.40CM - D.170CM  
LAMPS: N°22 | G9 MATERIAL: BRASS/GLASS



SPACIUM SNOOKER SUSPENSION, FLUSSO DINING TABLE, MARIE CHAIR & AMMIRA MIRROR



SUSPENSION





Alchemy is a masculine and raw collection, inspired by the pure enigma of the ancient and mystical science. It was designed to salute the blend of noble materials with sophisticated geometry. The masterfully implemented lighting fixtures are entirely made of brass with a plated finish. Rectangular lines combined with a layered circle-shaped structure bring a special allure to the design.



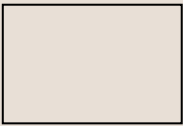
SUSPENSION 9590.100  
DIMENSIONS: H.30CM - Ø.100CM WEIGHT: NET 48KG  
LAMPS: N°48 | G9 MATERIAL: BRASS

CHOOSE  
YOUR  
FAVOURITE  
SHAPE

CIRCLE



RECTANGLE

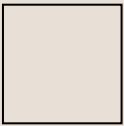


SUSPENSION 9592.90X60  
DIMENSIONS: H.30CM - W.90CM - D.60CM WEIGHT: NET 32 KG  
LAMPS: N°40 | G9 MATERIAL: BRASS



SUSPENSION 9591.80X80  
DIMENSIONS: H.30CM - W.80CM - D.80CM WEIGHT: NET 38KG  
LAMPS: N°40 | G9 MATERIAL: BRASS

SQUARE





SUSPENSION 9600.120

DIMENSIONS: H.32CM - Ø.120CM WEIGHT: NET 41KG  
LAMPS: N°28 | G9 MATERIAL: BRASS





PENDANT 9600.1

DIMENSIONS: H.32CM - Ø.11CM WEIGHT: NET 2KG  
LAMPS: N°2 | G9 MATERIAL: BRASS



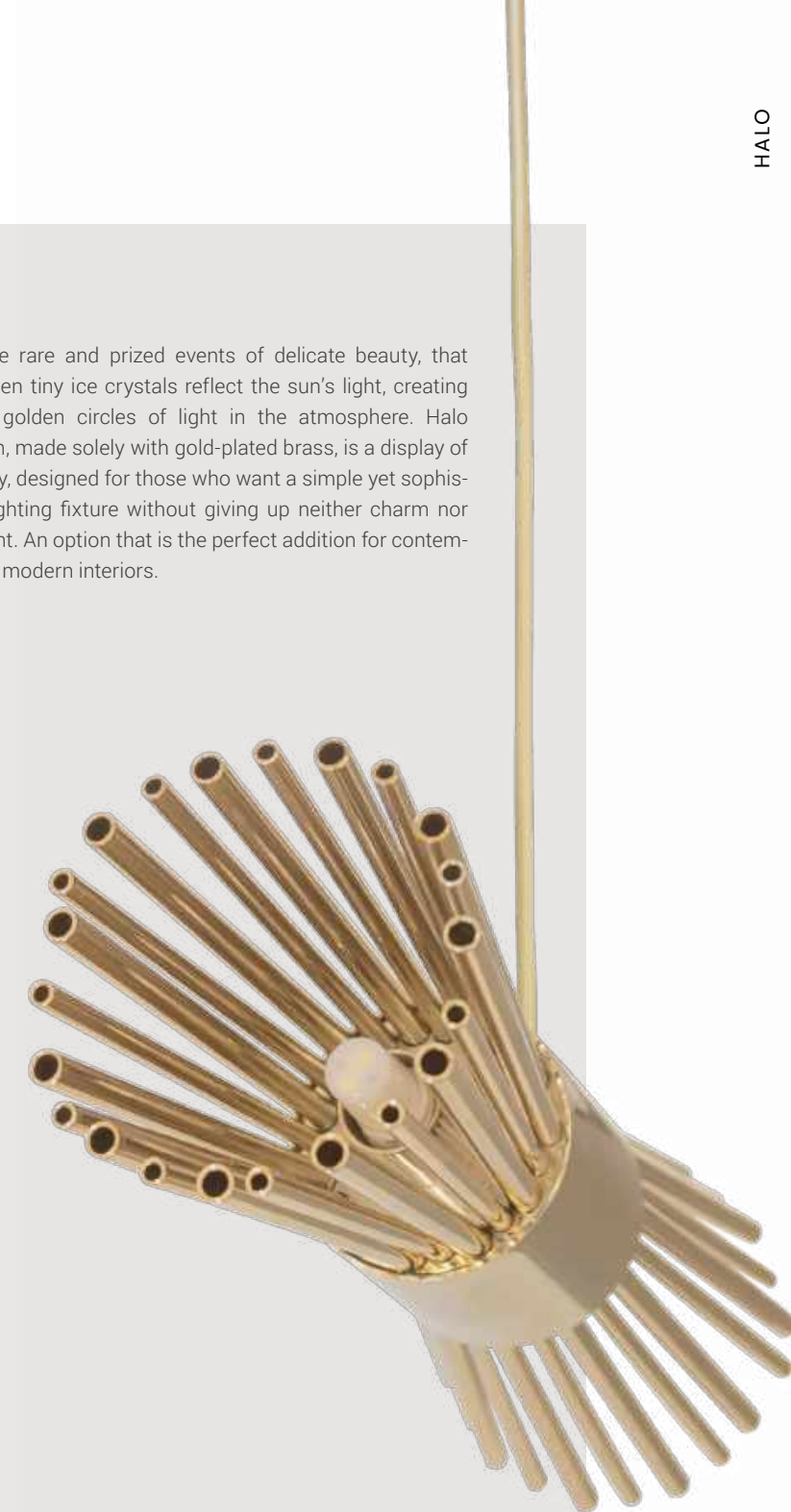
SUSPENSION 9600.6

DIMENSIONS: H.210CM - Ø.40CM WEIGHT: NET 13KG  
LAMPS: N°12 | G9 MATERIAL: BRASS



PENDANT 9600.20

DIMENSIONS: H.38CM - Ø.20CM WEIGHT: NET 3KG  
LAMPS: N°6 | G9 MATERIAL: BRASS



Halo's are rare and prized events of delicate beauty, that occur when tiny ice crystals reflect the sun's light, creating splendid golden circles of light in the atmosphere. Halo Collection, made solely with gold-plated brass, is a display of modernity, designed for those who want a simple yet sophisticated lighting fixture without giving up neither charm nor refinement. An option that is the perfect addition for contemporary or modern interiors.



SUSPENSION 9600.120

DIMENSIONS: H.32CM - Ø.120CM WEIGHT: NET 41KG  
LAMPS: N°28 | G9 MATERIAL: BRASS



WALL LIGHT 9601.2

DIMENSIONS: H.32CM - W.11CM - D.15CM WEIGHT: NET 3KG  
LAMPS: N°2 | G9 MATERIAL: BRASS



HALO TABLE LAMP, JADE SIDE TABLE



TABLE LAMP 9603.6

DIMENSIONS: H.67CM - Ø.20CM WEIGHT: NET 6KG  
LAMPS: N°6 | G9 MATERIAL: BRASS



FLOOR LAMP 9604.6

DIMENSIONS: H.178CM - Ø.30CM WEIGHT: NET 10KG  
LAMPS: N°6 | G9 MATERIAL: BRASS



PENDANT





SUSPENSION 9890.6

DIMENSIONS: H.200CM - Ø.40CM WEIGHT: NET1 2KG  
LAMPS: N°6 | G9/G10 MATERIAL: BRASS



SUSPENSION 9890.3

DIMENSIONS: H.150CM - Ø20CM WEIGHT: NET 6KG  
LAMPS: N°3 | G9/G10 MATERIAL: BRASS

Bringing inspirations from the Italian modernist architecture and design, Gio Pendant Light named after Gio Ponti, a worldwide reference for creating beautiful buildings across the world, always starting with geometric shapes and filling them with unexpected details inside. Resembling the light that we can see through building windows at night, Gio Pendant has geometric see through that create a unique light effect.



PENDANT 9890.1

DIMENSIONS: H.50CM - Ø.5CM WEIGHT: NET 2KG  
LAMPS: N°1 | G9/G10 MATERIAL: BRASS





Flute Collection is inspired by a landmark and natural wonder – the Reed Flute Cave. This handmade design is made of plated brass in the shape of solid tubes. Hammered by the hands of experienced craftsmen, it is capable of transforming any space into an adventurous and audacious scenery. Fundamentality, simplicity, smooth textures, and clean lines help define this contemporary collection.

SUSPENSION 9550.6

DIMENSIONS: H.198CM - Ø.20CM WEIGHT: NET 15KG  
LAMPS: N°7 | G9 MATERIAL: BRASS





PENDANT 9290.40

DIMENSIONS: H.46CM - Ø40CM WEIGHT: NET 18KG  
LAMPS: N°6 | G9 MATERIAL: BRASS



WALL LIGHT 9291.40

DIMENSIONS: H.80CM - W.42CM WEIGHT: NET 18KG  
LAMPS: N°4 | G9 MATERIAL: BRASS

The constant change and movement of dancers was the story behind the designing of Flusso Collection, as its gold-plated brass arms create a controlled, yet organic silhouette, producing an involving flow as seen from different perspectives. This design inspires and empowers creativity and self-expression, granting spaces a charming and artistic breeze of light.

SUSPENSION 9290.4

DIMENSIONS: H.150CM - Ø.100CM WEIGHT: NET 120KG  
LAMPS: N°33 | G9 MATERIAL: BRASS





Crystalline Collection is transparent but graceful. It cherishes modesty, just as modern design itself cultivates a sense of simplicity in every element. Round brass forms with very clean sophisticated lines are the base of this design. Hanging crystals added to the bottom of the pieces, turn them into the elite luxurious statement, and bring that desirable pure feeling. With a delicate though divine look, Crystalline is the ideal decorative lighting statement. It can be the perfect feature for any type of modern interior décor.

SUSPENSION 9530.6

DIMENSIONS: H.300CM - Ø.40CM WEIGHT: NET 6KG  
LAMPS: N°6 | G9 MATERIAL: BRASS/CRYSTAL





WALL LIGHT 9730.2

DIMENSIONS: H.70CM - W.9CM - D.11CM WEIGHT: NET 3KG  
LAMPS: N°2 | GU10 MATERIAL: BRASS

Nolan Wall Light represents the beauty of bespoke, showing the ultimate class in brass. Designed to be a delicate yet splendid highlight to an interior design project, it incorporates modern simplicity with an elegant and luxurious twist of art deco style. Clean and sleek lines of this modern wall light reveal a fresh take on contemporary refinement in lighting design. The handmade wall sconce resembles an exquisitely balanced curve that twists like a shell, as its gold-plated brass tube is bent by the hands of experienced craftsmen.



WALL LIGHT 9730.4

DIMENSIONS: H.80CM - W.18CM - D.11CM WEIGHT: NET 6KG  
LAMPS: N°4 | GU10 MATERIAL: BRASS



WALL | TABLE





WALL LIGHT 9340.2

DIMENSIONS: H.85CM - W.11CM WEIGHT: NET 5,3KG  
LAMPS: N°2 | G9 MATERIAL: BRASS



SUSPENSION 9341.2

DIMENSIONS: H.8CM - W.100CM WEIGHT: NET 5KG  
LAMPS: N°2 | G9 MATERIAL: BRASS



TABLE LAMP 3046.1

DIMENSIONS: H.62CM - Ø.40CM WEIGHT: NET 4,9KG  
LAMPS: N°1 | E27 MATERIAL: BRASS/FABRIC



WALL LIGHT 9342.130X20

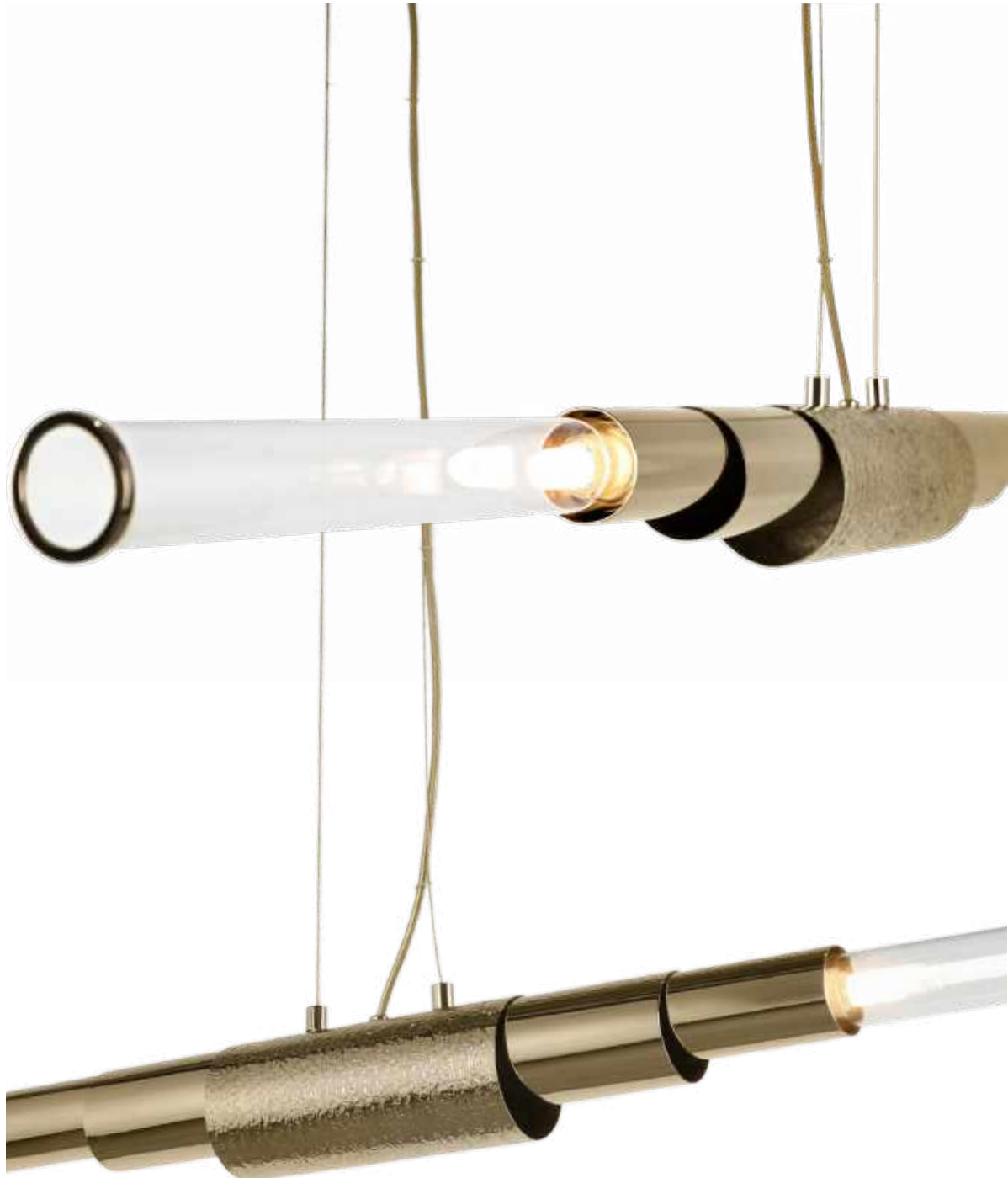
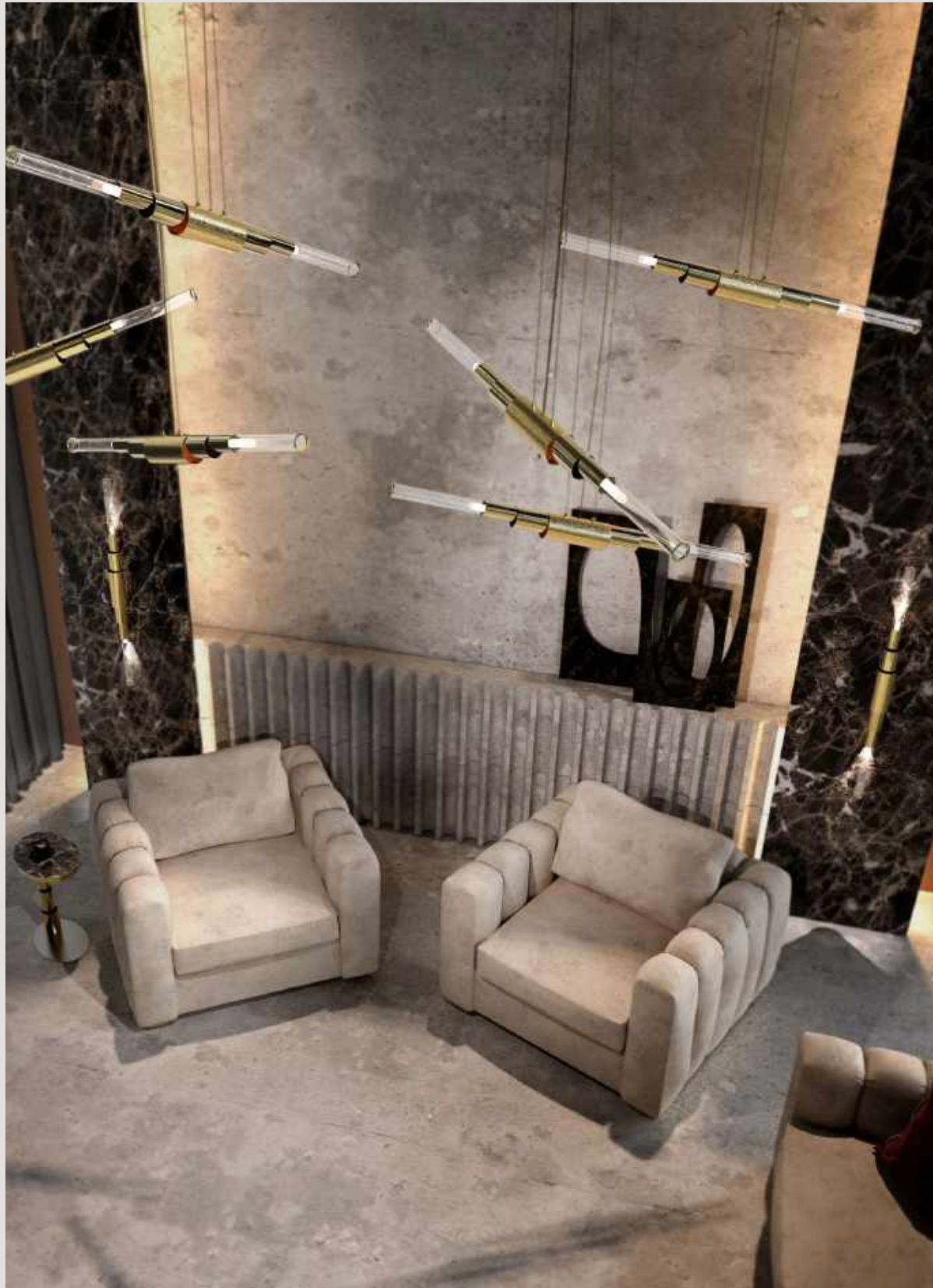
DIMENSIONS: H.110CM - W.22CM WEIGHT: NET 8,1KG  
LAMPS: N°6 | G9 MATERIAL: BRASS

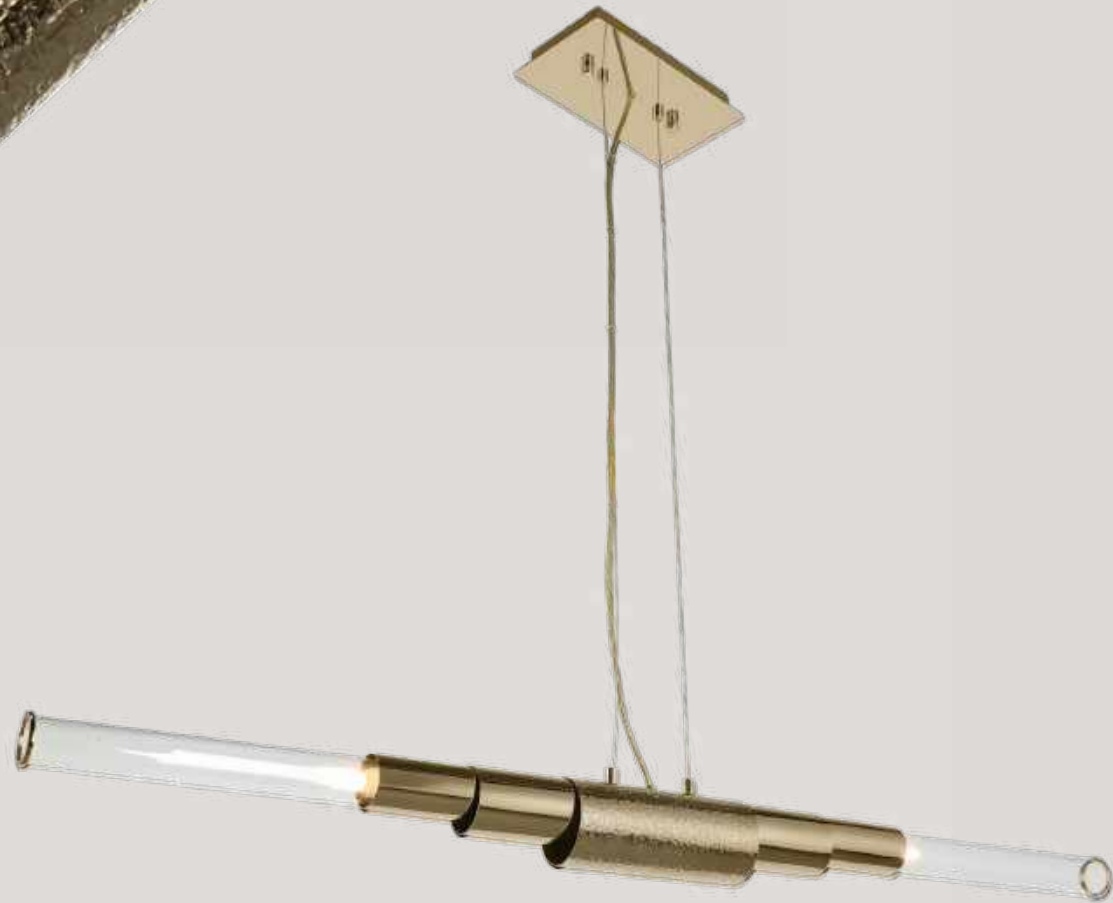


HAMMERED  
TEXTURE

Triumph Collection, made solely with brass, is an expression of modern industrial design and a celebration of avant-garde handcrafting techniques. The design's warm light spreads across the surrounding space, making it ideal for a bedroom, hallway, restaurant, or even bar. Triumph sets trends and embellishes today's most prestigious interior projects, creating stylish vibes.







SUSPENSION 9590.1

DIMENSIONS: H.8CM - W.115CM WEIGHT: NET 4KG  
LAMPS: N°2 | G9 MATERIAL: BRASS/GLASS



The Metier Collection personifies the CASTRO savoir faire of elegant lighting collections along with timeless allure. An imposing iconic design is its "métier". Being the beacon of pure light, this design is the embodiment of the ultimate luxury within its impressive commitment to sophisticated lighting design, integrity, and brass manufacture devotion.

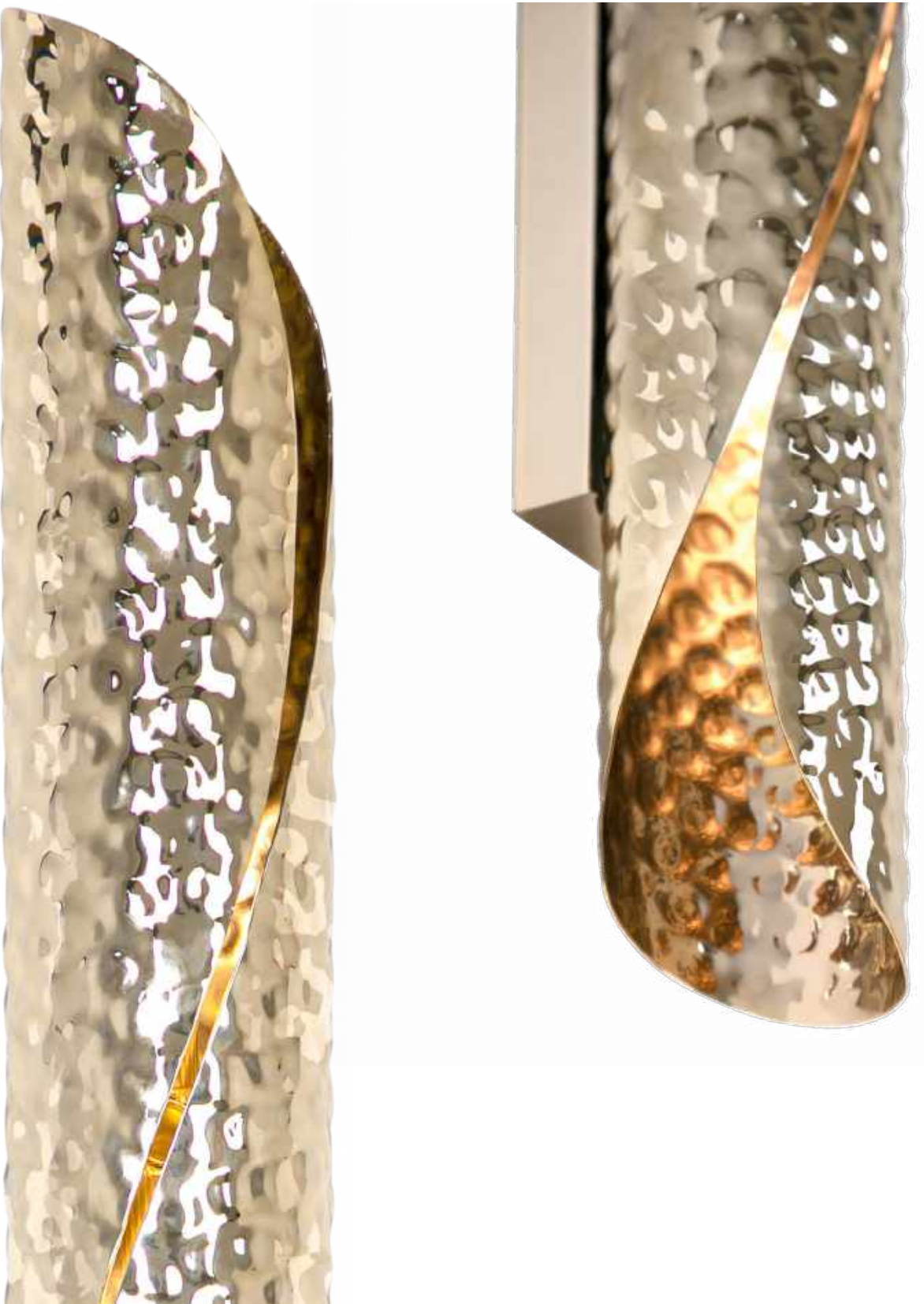


WALL LIGHT 9591.2

DIMENSIONS: H.115CM - D.8CM  
LAMPS: N°2 | G9 MATERIAL: BRASS/GLASS



WALL



WALL LIGHT 9720.2  
DIMENSIONS: H.60CM - W.9CM - D.11CM WEIGHT: NET 2KG  
LAMPS: N°2 | G9 MATERIAL: BRASS



PENDANT 9721.6

DIMENSIONS: H.300CM - Ø.40CM WEIGHT: NET KG  
LAMPS: N°6 | G9 MATERIAL: BRASS



PENDANT 9721.3

DIMENSIONS: H.200CM - Ø.20CM WEIGHT: NET KG  
LAMPS: N°3 | G9 MATERIAL: BRASS

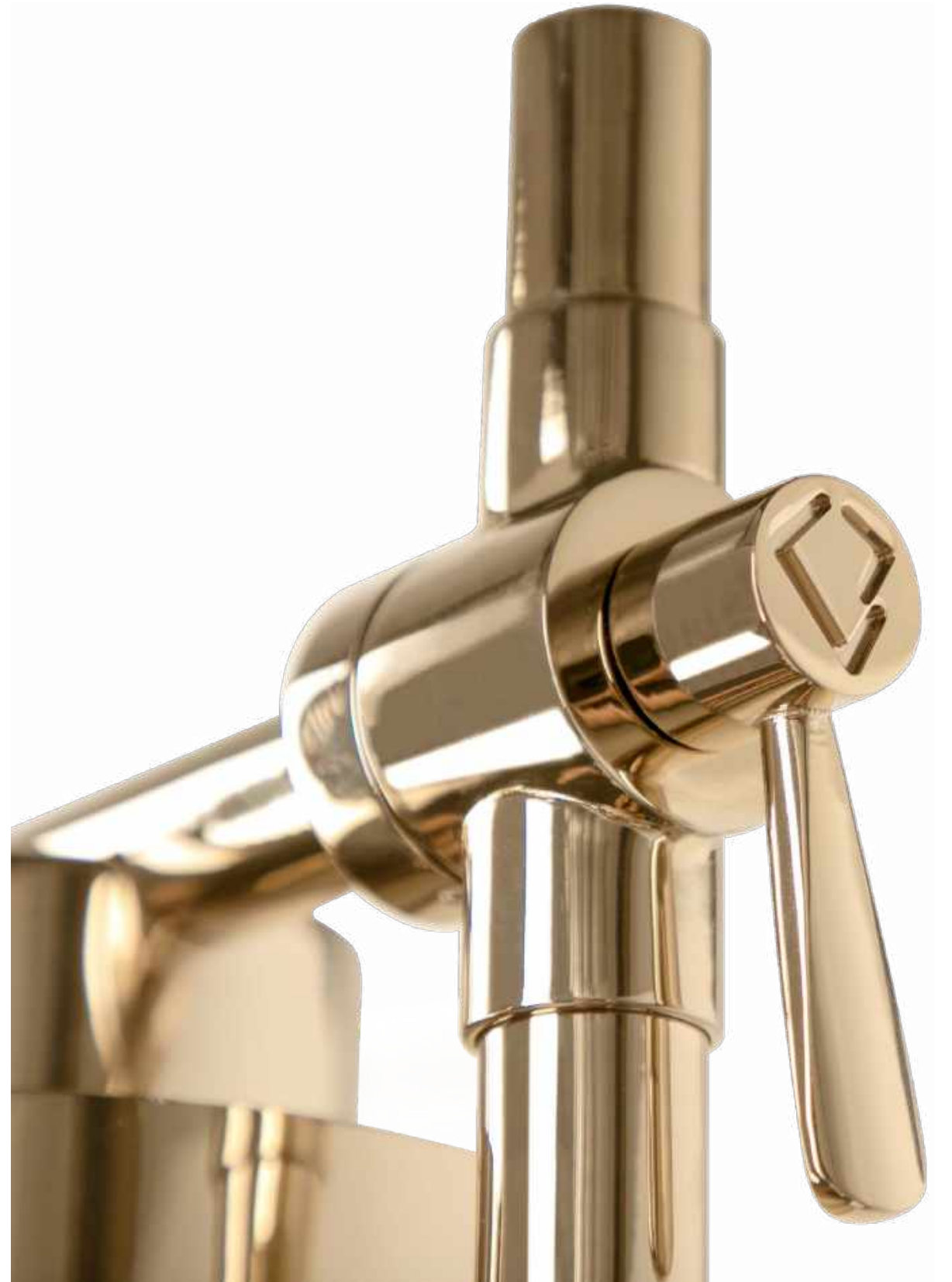


PENDANT 9721.1

DIMENSIONS: H.200CM - Ø.9CM WEIGHT: NET KG  
LAMPS: N°1 | G9 MATERIAL: BRASS

Elven charming collection arose from the enthusiasm and passion for the mythical world of Norse mythology. Elven gold wall light takes you on an exceptional and magical journey through the fantasy world. It resembles a beautifully balanced curve that twists like a shell, as its plated brass tube is bent and hammered by the hands of experienced craftsmen. A modern simplicity with an elegant and luxurious touch.





SET YOUR  
FOCUS



TABLE LAMP 3055.1

DIMENSIONS: H.58CM - Ø.20CM WEIGHT: NET 9KG  
LAMPS: N°1 | G9 MATERIAL: BRASS/MARBLE

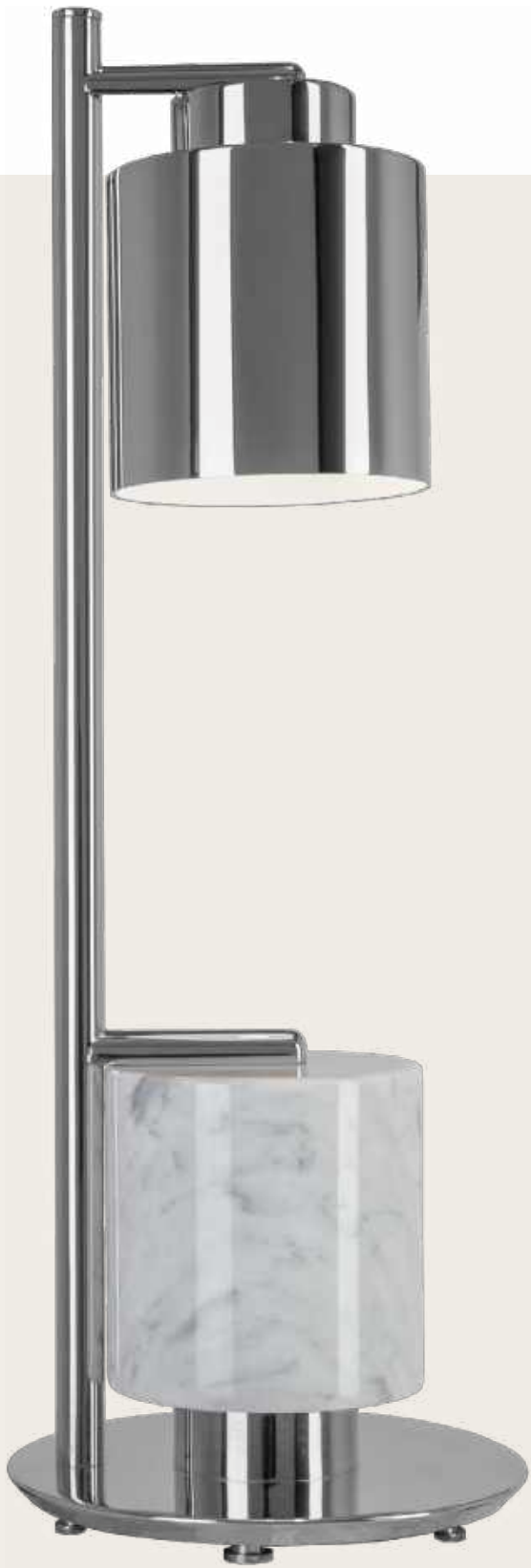


TABLE LAMP 3054.1

DIMENSIONS: H.58CM - Ø.20CM WEIGHT: NET 9KG  
LAMPS: N°1 | G9 MATERIAL: BRASS/MARBLE

Chantel is a smooth symphony of shapes and geometry, paired with precious materials and a sharp-lined structure. Having a duality idea in its design, this contemporary table lamp reflects its top and base like a mirrored image, granting a special magnetism to this piece. Its structure is made of glitzy brass, paired with a cylindrical Estremoz white marble. The exceptionally elegant and creative table lamp makes it easy to uplift the interior design with a new aesthetic in decorative lighting.

MARBLE OPTIONS



EMPERADOR



MARQUINA



ESTREMOZ





Savoye Collection bears the authentic name of the famous Villa Savoye, one of the greatest icons of modern architecture. This design is unparalleled in the elegance and tenderness it displays. It combines two different finishes in the layered brass, bringing a delicate charisma to the lampshades. A combination of roughness, delicate detailing and refined design that perfectly fits mid-century modern or art deco interior styles.



ADJUSTABLE  
LAMP SHADE

TABLE LAMP 9583.1

DIMENSIONS: H.75CM - W.75CM - D.24CM WEIGHT: NET 9,6KG  
LAMPS: N°1 | G9 MATERIAL: BRASS/MARBLE



BLACK NICKEL  
+  
24K GOLD

FLOOR LAMP 9581.1

DIMENSIONS: H.160CM - W.90CM - D.25CM WEIGHT: NET 8KG  
LAMPS: N°1 | G9 MATERIAL: BRASS/MARBLE



FLOOR LAMP 9582.3

DIMENSIONS: H.180CM - Ø.20CM WEIGHT: NET 22KG  
LAMPS: N°3 | G9 MATERIAL: BRASS/MARBLE

FEATURED IN  
ID. INTERIOR  
DESIGN  
UKRAINE







ECLIPSE WALL LIGHT, EUPHORIA STOOL

# ECLIPSE

Eclipse Collection was named after the solar eclipse phenomenon when the moon creates a shadow that partially inhibits sunrays from being seen from Earth. Recreating this natural wonder, its design is composed of two rounded brass plates, with a slight distance between them, only allowing little crescents of light to shine through. The front plate is hammered by hand, reflecting in the shiny finish in the back.



WALL LIGHT 9700.40

DIMENSIONS: Ø.40CM WEIGHT: NET 3,5KG  
LAMP: N°3 | G9 MATERIAL: BRASS



FLOOR LAMP 9703.4

DIMENSIONS: H.180CM - Ø.32CM WEIGHT: NET 15KG  
LAMP: N°12 | G9 MATERIAL: BRASS

V



SUSPENSION 9093.5

DIMENSIONS: H.150CM - Ø.120CM WEIGHT: NET 30KG  
LAMPS: N°30 | G9 MATERIAL: BRASS/CRYSTAL



MODERN COLLECTION

GALILEI



SUSPENSION 9150.70

DIMENSIONS: H.70CM - Ø.70CM WEIGHT: NET 8,6KG  
LAMPS: N°12 | G9 MATERIAL: BRASS/CRYSTAL

AVAILABLE IN MATTE, BRUSHED AND OXIDIZED FINISHES



GALILEI SUSPENSION, HARING DINNING TABLE, PABLO CHAIR





SUSPENSION 9910.100  
DIMENSIONS: H.200CM - Ø.90CM  
LAMPS: N°96 | G9 MATERIAL: BRASS/CRYSTAL



This mesmerizing design brings you into the daydreaming state of mind, revealing the story about visionary luxury and fancy fantasy implemented from the classy sketch to the sophisticated chandelier. Impressive new lighting creation is the marriage of innovations, design creativity, and brass handcrafting perfection. Imagine the constellation of stars in the open space, freedom, and transparency. The Constellation suspension is composed of rotating stars figures adorned with falling raindrops spinning around the lighting design in the centre that shimmer in harmony through the delicate crystals. In addition to the magnificent crystal drops, the design has sharp crystals that contrast with the raindrops and allude to meteorite shape, as well as convey the impression of ice shards.



HEMERA SUSPENSION, SPARTA TABLE LAMP

SUSPENSION

HEMERA



SUSPENSION 9520.90

DIMENSIONS: H.60CM - Ø.100CM WEIGHT: NET 35KG  
LAMPS: N°16 | G9 MATERIAL: BRASS/CRYSTAL

LOUVRE



SUSPENSION 9480.110

DIMENSIONS: H.65CM - Ø.110CM WEIGHT: NET 14,5KG  
LAMPS: N°18 | G9 MATERIAL: BRASS/CRYSTAL

SUSPENSION | WALL

MADISON



SUSPENSION 8820.9

DIMENSIONS: H.30CM - Ø.82CM WEIGHT: NET 12,5KG  
LAMPS: N°18 | GU10 MATERIAL: BRASS



WALL LIGHT 8821.2

DIMENSIONS: H.30CM - W.9CM WEIGHT: NET 1,2KG  
LAMPS: N°2 | GU10 MATERIAL: BRASS



EUPHORIA



SUSPENSION 8940.80

DIMENSIONS: H.15CM - Ø.80CM WEIGHT: NET 16,5KG  
LAMPS: N°18 | G9 MATERIAL: BRASS/CRYSTAL



WALL 8941.40

DIMENSIONS: H.15CM - W.40CM - D.22CM WEIGHT: NET 2,75KG  
LAMPS: N°4 | G9 MATERIAL: BRASS/CRYSTAL

AUREA



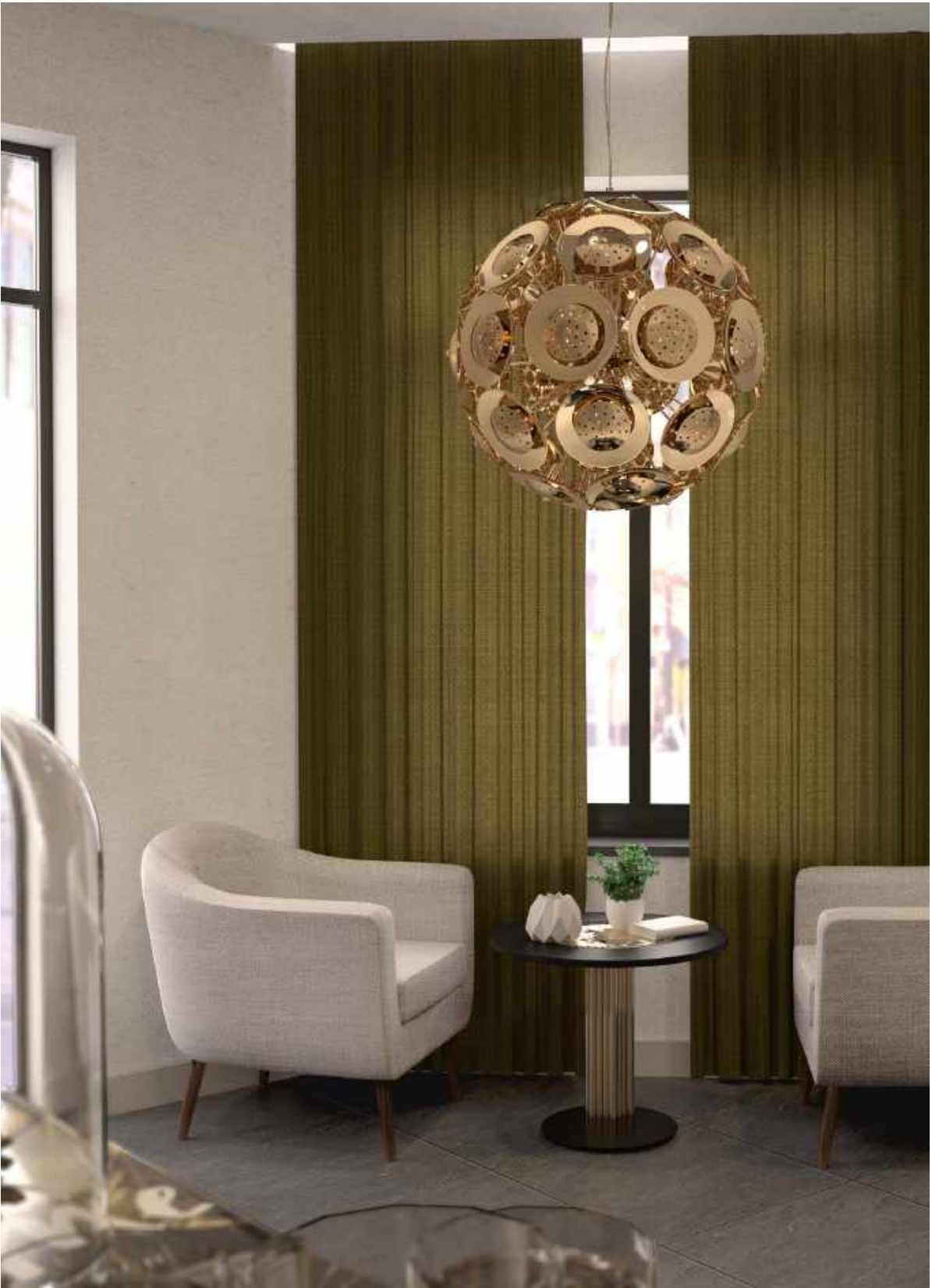
SUSPENSION 9043.80

DIMENSIONS: H.80CM - Ø.80CM WEIGHT: NET 20,5KG  
LAMPS: N°34 | G9 MATERIAL: BRASS



SUSPENSION 9043.80

DIMENSIONS: H.80CM - Ø.80CM WEIGHT: NET 20,5KG  
LAMPS: N°34 | G9 MATERIAL: BRASS



AUREA SUSPENSION



PROJECT BY MEBLOLIGHT / FLOW INTERIORS



SUSPENSION 9020.80

DIMENSIONS: H.150CM - Ø.80CM WEIGHT: NET 8,5KG  
LAMPS: N°6 | G9 MATERIAL: BRASS/CRYSTAL

## RAVEL

Maurice Ravel was a French composer and pianist, often associated with Impressionism. Ravel Collection carries the same name and grandeur it offers, as it was created to be elegant yet functional. Stunning crystals emerge from the center of the delicately hammered gold plated brass, allowing the light to spread to the surrounding space.



WALL LIGHT 9022.30

DIMENSIONS: Ø.30CM - D.6CM WEIGHT: NET 2KG  
LAMPS: N°2 | G9 MATERIAL: BRASS



WALL LIGHT 9021.50

DIMENSIONS: H.75CM - W.50CM - D.6CM WEIGHT: NET 2,95KG  
LAMPS: N°3 | G9 MATERIAL: BRASS/CRYSTAL



SUSPENSION



SUSPENSION | PENDANT



PENDANT

PRISMA



SUSPENSION

SONATA



GALAXY

\*ONLY LED LAMPS CAN BE USED



SUSPENSION 9110.120

DIMENSIONS: W.120CM - Ø.20CM WEIGHT: NET 9,5KG  
LAMPS: N°8 | G9 MATERIAL: BRASS

PENDANT 9540.1

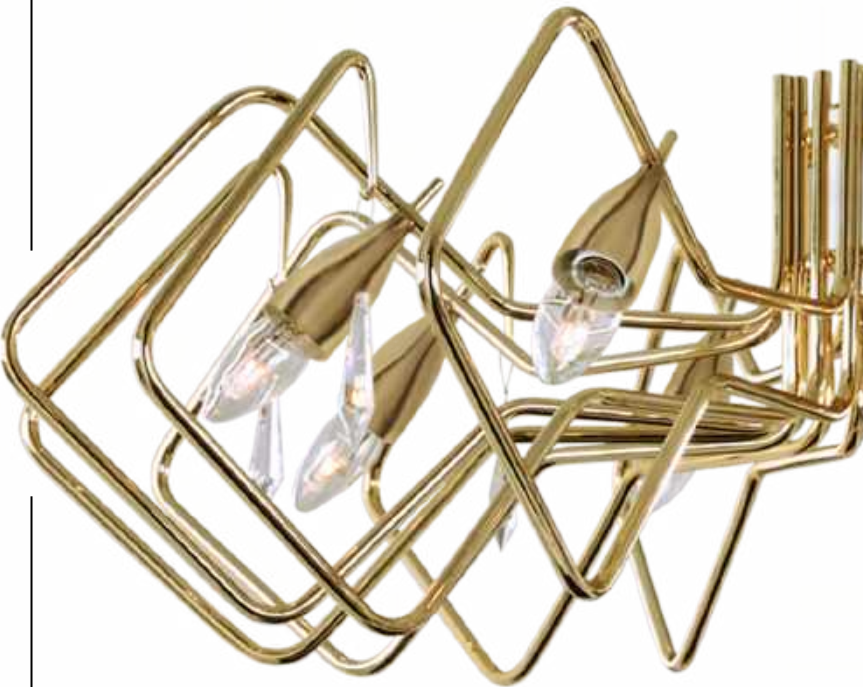
DIMENSIONS: H.48CM - Ø.18CM WEIGHT: NET 2KG  
LAMPS: N°1 | G9 MATERIAL: BRASS

PENDANT 9470.30

DIMENSIONS: H.46CM - W.30CM WEIGHT: NET 2KG  
LAMPS: N°1 | G9 MATERIAL: BRASS

SUSPENSION 9010.8

DIMENSIONS: H.32CM - Ø.90CM WEIGHT: NET 7,5KG  
LAMPS: N°8 | E14 MATERIAL: BRASS/SWAROVSKY CRYSTAL





OPERA CONTEMPORARY AT EUROLUCE '19

RIVIERA



WALL LIGHT 9701.4

DIMENSIONS: H.56CM - W.18CM WEIGHT: NET 4KG  
LAMPS: N°4 | G9 MATERIAL: BRASS



WALL LIGHT 9701.2

DIMENSIONS: H.50CM - W.9CM WEIGHT: NET 2KG  
LAMPS: N°2 | G9 MATERIAL: BRASS

WALL

LIBERTY



WALL LIGHT 9451.130X20

DIMENSIONS: H.110CM - W.23CM - D.9CM WEIGHT: NET 5,7KG  
LAMPS: N°6 | G9 MATERIAL: BRASS





TAYLOR TABLE LAMP

LAMPSHADE OPTIONS



BLACK RIBBED



NUPEACH



SEAMS OF GREY



SYNTHETIC BROWN

+ MORE OPTIONS P.213

MANHATTAN



TABLE LAMP 3047.1

DIMENSIONS: H.74CM - Ø.40CM WEIGHT: NET 7KG  
LAMPS: Nº1 | E27 MATERIAL: BRASS/FABRIC/LEATHER

TAYLOR



TABLE LAMP 3048.1

DIMENSIONS: H.73CM - Ø.40CM WEIGHT: NET 7KG  
LAMPS: Nº1 | E27 MATERIAL: BRASS/FABRIC/LEATHER

BAUHAUS



TABLE LAMP 3050.1

DIMENSIONS: H.74CM - Ø.40CM WEIGHT: NET 5KG  
LAMPS: Nº1 | E27 MATERIAL: BRASS/FABRIC/LEATHER

MARBLE OPTIONS



EMPERADOR



ESTREMOZ



MARQUINA

SPARTA



TABLE LAMP 3033.1

DIMENSIONS: H.66CM - Ø.40CM    WEIGHT: NET 9,4KG  
LAMPS: Nº1 | E27    MATERIAL: BRASS/MARBLE/FABRIC

SATURN



TABLE LAMP 3052.1

DIMENSIONS: H.76CM - Ø.40CM    WEIGHT: NET 8KG  
LAMPS: Nº1 | E27    MATERIAL: BRASS/FABRIC



ROTATING  
STRUCTURE



SPARTA TABLE LAMP





PETRA TABLE LAMP, MARIE SIDE TABLE

- CRYSTAL ROCKS OPTIONS
-  012 280 NUT
  -  012 001 M104
  -  012 001 M100
  - + MORE OPTIONS P.212



TABLE LAMP 3044.1CR  
DIMENSIONS: H.71CM - Ø.40CM WEIGHT: NET 7KG  
LAMPS: N°1 | E27 MATERIAL: BRASS/CRYSTAL ROCKS/FABRIC

## PETRA

The "Rose City" of Petra was the inspiration for this collection as its design takes us to the temples and ancient richness. The Nero Marquina marble block in the center recalls an archeological stone, framed by a golden brass structure that confers a harmonious balance to the piece. This timeless seductive design is the perfect decorative lamp, capable of fitting in the most demanding decors and high-end project.



TABLE LAMP 3044.1  
DIMENSIONS: H.71CM - Ø.40CM WEIGHT: NET 7KG  
LAMPS: N°1 | E27 MATERIAL: BRASS/MARBLE/FABRIC





# CRYSTAL COLLECTIONS

The avant-garde spirit of Castro Lighting led to the creation of exceptional lighting designs, where the use of crystals has played a key role in establishing the brand's design signature. Since 1978, the brand has kept up with the evolution of classic design tendencies and has been implementing modern accents and techniques to improve the design's distinctiveness and timelessness.

From very early on, the importance of crystal lighting started to be appreciated, and today, the brand's personality shines brighter through these breathtaking and exclusive design experiences, that diffuse everlasting elegance and beauty.

162	LEVIEV
166	MYSTIC
168	GATSBY
170	ATLANTIDA
172	LISBOA
172	DENVER
172	RIMINI
173	VARSOVIA
173	MIDNIGHT





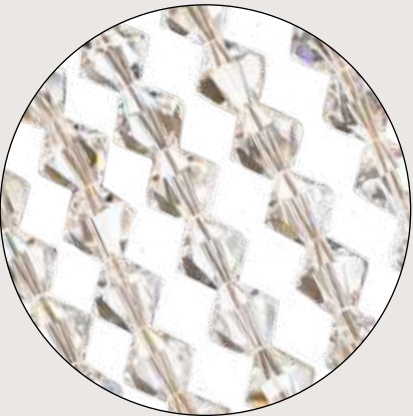




SUSPENSION 9850.80

DIMENSIONS: H.10CM - Ø.80CM WEIGHT: NET 18KG  
LAMPS: N°12 | G9 MATERIAL: BRASS/CRYSTAL

CRYSTAL BEADS



The Leviev handmade suspension was designed to be a stylish solution for any room. A contemporary lighting fixture with accents of Hollywood Glam and Mid-Century Modern interior styles, a great addition to complete the décor with elegance and glamour. A dimpled bending-round shape, coupled with crystals, reveals a balance of sophistication and delicacy, giving the interior a distinctive accent of comfort and harmony.





Having spirituality, art, and transcendent events as inspiration, Mystic has a clean and light aesthetic. This Collection has several clear crystal strips that shape the round, slightly flattened, structure. An unforgettable design that takes us to mystical stories and spiritual feelings while giving an imposing and majestic personality to all interiors.

SUSPENSION 5984.25

DIMENSIONS: H.225CM - Ø.120CM WEIGHT: NET 50KG  
LAMPS: N°25 | G9 MATERIAL: BRASS/CRYSTAL

PENDANT 5981.25

DIMENSIONS: H.25CM - Ø.25CM WEIGHT: NET 1,5KG  
LAMPS: N°1 | G9 MATERIAL: BRASS/CRYSTAL





SUSPENSION 9240.100

DIMENSIONS: H.180CM - Ø.100CM WEIGHT: NET 55KG  
LAMPS: N°24 | G9 MATERIAL: BRASS/CRYSTAL



WALL LIGHT 9243.5

DIMENSIONS: H.95CM - W.40CM WEIGHT: NET 6,6KG  
LAMPS: N°5 | G9 MATERIAL: BRASS/CRYSTAL

Gatsby Collection proudly bears the name of the 20's novel The Great Gatsby, by F. Scott Fitzgerald. With Crystals as its main feature, along with dashes of classical detailing, this design takes us on a journey back to the crazy 20s, to social get-togethers, creativity, dance, cultural dynamism, and unparalleled joy. Gatsby's powerful yet smooth lines create an organic movement of lights and shadows that represent elegance and glamour.





SUSPENSION 8000.100

DIMENSIONS: H.200CM - Ø.100CM WEIGHT: NET 21KG  
LAMPS: N°16 | GU10 MATERIAL: BRASS/CRYSTAL

Atlantida Collection was developed to achieve the perfect harmony between classic and contemporary interior styles. Combining high-quality handcrafted brass and the exquisite Crystals, Atlantida is ideal for luxurious double floor staircases or stylish living rooms, as an unquestionable luxury statement that lends a superior and prestigious character to any interior.



WALL LIGHT 8002.3

DIMENSIONS: H.93CM - W.25CM - D.30CM WEIGHT: NET 2KG  
LAMPS: N°3 | GU10 MATERIAL: BRASS/CRYSTAL



WALL LIGHT 8011.3

DIMENSIONS: H.80CM - W.44CM - D.25CM WEIGHT: NET 2,6KG  
LAMPS: N°3 | GU10 MATERIAL: BRASS/CRYSTAL



SUSPENSION

SUSPENSION

SUSPENSION | WALL | TABLE | FLOOR

LISBOA



SUSPENSION 3431.80X80

DIMENSIONS: H.55CM - W.80CM - D.80CM WEIGHT: NET 15KG  
LAMPS: N°12 | G10 MATERIAL: BRASS/CRYSTAL

RIMINI



SUSPENSION 4528.180

DIMENSIONS: H.180CM - Ø.40CM WEIGHT: NET 10,2KG  
LAMPS: N°6 | GU10 MATERIAL: BRASS/CRYSTAL

DENVER



CEILING LAMP 3413.70

DIMENSIONS: H.22CM - W.70CM - D.70CM WEIGHT: NET 19KG  
LAMPS: N°16 | G9 MATERIAL: BRASS/CRYSTAL

VARSOVIA



SUSPENSION 3460.70

DIMENSIONS: H.35CM - Ø.70CM WEIGHT: NET 8,2KG  
LAMPS: N°12 | GU10 MATERIAL: BRASS/CRYSTAL



MIDNIGHT



TABLE LAMP 3051.1

DIMENSIONS: H.80CM - Ø.25CM WEIGHT: NET 6KG  
LAMPS: N°1 | E27 MATERIAL: BRASS/CRYSTAL



# CLASSIC COLLECTIONS

In the beginning, Castro Lighting took its first steps in the lighting industry with classically styled chandeliers, taking advantage of the expertise and the long craftsmanship tradition of Portugal. Nowadays, the brand has several bestseller Classic Collections spread across the world, and some of them are even part of the most magnificent and renowned interior design projects.

Classic style is inspired by the 18th and 19th century European décor, a timeless trend that displays elegance and lavishness, as well as elaborated silhouettes and exciting detailing. To bring this concept to life and create its own and renewed interpretation of classic luxury, Castro Lighting creates new designs each year, from suspensions to floor lamps, all characterized by the use of noble materials and valued traditional techniques.

Timeless influences are materialized in lighting collections that incorporate with an elegant combination of refined materials, such as brass, marble, glass and crystals. Each crystal is handled with love so that each reflection is never less than perfect. The outcome is true masterpieces, with Venetian, Art Deco, and Hollywood glamour styles. Each space is awarded a delicate brightness and an everlasting grace.

176	CASABLANCA
178	TANGER
180	VIENNA
182	MARBELLA
183	SWAN LAKE



SUSPENSION | WALL | TABLE | FLOOR



SUSPENSION 5140.10

DIMENSIONS: H.60CM - Ø.105CM    WEIGHT: NET 16KG  
LAMPS: N°10 | E14    MATERIAL: BRASS/CRYSTAL

Casablanca Collection embodies the 40's romantic drama directed by Michael Curtiz, granting it a mysterious, opulent, and classy sense. A design that imposes its majestic personality, taking us back to great stories and unforgettable memories, through its complex detailing and harmonious balance of its gold-plated brass and crystals.



WALL LIGHT 5146.2

DIMENSIONS: H.45CM - W.37CM    WEIGHT: NET 3KG  
LAMPS: N°2 | E14    MATERIAL: BRASS/CRYSTAL



FLOOR LAMP 5149.3

DIMENSIONS: H.170CM - Ø.50CM    WEIGHT: NET 7KG  
LAMPS: N°3 | E14    MATERIAL: BRASS/CRYSTAL





SUSPENSION 5100.16

DIMENSIONS: H.70CM - Ø.80CM WEIGHT: NET 13KG  
LAMPS: N°16 | E14 MATERIAL: BRASS/CRYSTAL

Having the city of Tanger, Morocco as inspiration, Tanger Collection represents the impact of different civilizations and cultures on the city's history. Being considered the ideal destination for diplomats, writers, and businessmen, the design evokes that multiculturalism and the design influences that came along. The detailing of the design, as well as on the crystal plates, give this piece a unique look, making it the perfect statement feature.



WALL LIGHT 5104.2

DIMENSIONS: H.40CM - W.35CM WEIGHT: NET 1,9KG  
LAMPS: N°2 | E14 MATERIAL: BRASS/CRYSTAL



SUSPENSION 6175.18

DIMENSIONS: H.90CM - Ø.100CM WEIGHT: NET 20,2KG  
LAMPS: N°18 | E14 MATERIAL: BRASS/CRYSTAL/FABRIC

Vienna Collection immortalized the Vienna Opera, annually held since the 19th century, and maintains the sumptuousness and richness of the event, conferred by the combination of brass with the magnificent crystals. The collection alluring and subtle design creates a refined splendour, incorporating a timeless grandiosity, full of lavish details.



TABLE LAMP 6176.1

DIMENSIONS: H.68CM - Ø.40CM WEIGHT: NET 7,1KG  
LAMPS: N°1 | E27 MATERIAL: BRASS/CRYSTAL/FABRIC



FLOOR LAMP 6178.1

DIMENSIONS: H.190CM - Ø.55CM WEIGHT: NET 9,8KG  
LAMPS: N°1 | E27 MATERIAL: BRASS/CRYSTAL/FABRIC





MARBELLA



SUSPENSION 6470.18

DIMENSIONS: H.85CM - Ø.90CM WEIGHT: NET 15KG  
LAMPS: N°18 | E14 MATERIAL: BRASS/CRYSTAL/FABRIC



TABLE LAMP 6472.1

DIMENSIONS: H.58CM - Ø.40CM WEIGHT: NET 3KG  
LAMPS: N°1 | E27 MATERIAL: BRASS/CRYSTAL/FABRIC



WALL LIGHT 6473.2

DIMENSIONS: H.50CM - W.26CM WEIGHT: NET 1,5KG  
LAMPS: N°2 | E14 MATERIAL: BRASS/CRYSTAL/FABRIC

SWAN LAKE



SUSPENSION 6810.12

DIMENSIONS: H.80CM - Ø.125CM WEIGHT: NET 30KG  
LAMPS: N°12 | E14 MATERIAL: BRASS/CRYSTAL/FABRIC



SUSPENSION 6811.2

DIMENSIONS: H.48CM - W.55CM - D.34CMCM WEIGHT: NET 3KG  
LAMPS: N°2 | E14 MATERIAL: BRASS/CRYSTAL/FABRIC



# LIFESTYLE COLLECTIONS

To expand and grow its collections, Castro Lighting decided to give a big step forward and, in 2016, the first piece of furniture was designed. From there until now, a wide range of lifestyle designs was developed to complement the lighting selection so that any professional has the possibility to create interior projects where lighting and furniture seamlessly comes together.

Always bearing in mind the importance of customization, a rich variety of finishes and materials are accessible as a resource to create individuality.

Timeless influences are materialized through furniture, where classical and modern accents are an elegant combination of refined materials. Castro's collections merge lighting and furniture in a sophisticated and balanced way. The perfect fusion of passion for interior design.

## TABLES

187	HARING
187	PATTERN
187	CHARLOTTE
188,191	VICTORIA
188,191	MARIE
188	JADE
191	EUPHORIA
191	GIANNA

## CABINETS & CONSOLES

193	NAUTILUS
193	MARIE
193	FLUSSO
194	MONDRIAN
196	TALISMAN
196	GAYA

## UPHOLSTERY

199	MARIE
200	COLOMBO
202	PROJECTION
202	BLOSSOM
202	CHIARA
202	ANNA
203	MIA
203	PENELOPE
203	WINDSOR
204	SEDERE
206	PABLO

## BAR FURNITURE

209	CHARLOTTE
209	STREAMLINE
209	SAVOYE
210	PENELOPE
210	ZOLA
210	PROJECTION

## MIRRORS

213	AMMIRA
213	CANYON
213	GOLDEN EYE
213	NAUTILUS
214	PATTERN
214	MONDRIAN
214	ROMA

## DIVIDER

215	MATISSE
-----	---------





GALILEI SUSPENSION, HARING DINNING TABLE, PABLO CHAIR

HARING



DINING TABLE HARING

DIMENSIONS: H.80CM - Ø.120CM WEIGHT: NET 45KG  
MATERIAL: BRASS/GLASS

PATTERN



DINING TABLE PATTERN

DIMENSIONS: H.80CM - Ø.120CM WEIGHT: NET 51KG  
MATERIAL: BRASS/GLASS/WOOD

CHARLOTTE



DINING TABLE CHARLOTTE

DIMENSIONS: H.75CM - Ø.160CM  
MATERIAL: BRASS/MARBLE



FLUSSO DINING TABLE, MARIE CHAIR, AMMIRA MIRROR & SPACIUM SNOOKER SUSPENSION



DINING TABLE

DIMENSIONS: H.75CM - W.110CM - D.220CM WEIGHT: UNDER REQUEST  
MATERIAL: BRASS/WOOD



DINING TABLE

DIMENSIONS: H.75CM WEIGHT: UNDER REQUEST  
MATERIAL: BRASS/WOOD

# FLUSSO

Flusso's design makes the gold brass elements involved in a unique flow. Just like a dance, which inspires and empowers people to be artistic and expressive, the Flusso lifestyle furniture piece creates a perfect luxurious posture that spreads its vibes freely around the area, creating a sophisticated ambience.



# VICTORIA



SIDE TABLE VICTORIA.ST

DIMENSIONS: H.62CM - Ø.40CM  
MATERIAL: BRASS/MARBLE

# MARIE



SIDE TABLE MARIE.ST

DIMENSIONS: H.60CM - Ø.40CM WEIGHT: NET 11KG  
MATERIAL: BRASS/GLASS

# JADE



SIDE TABLE JADE / JADE.SM

DIMENSIONS: H.61CM - W.45CM / H.52CM - W.30CM WEIGHT: NET 14/6KG  
MATERIAL: BRASS/GLASS/MARBLE/WOOD



TRIUMPH WALL LIGHT & VICTORIA SIDE TABLE



GIANNA CENTER TABLE

EUPHORIA



CENTER TABLE 8943.70

DIMENSIONS: H.40CM - Ø.70CM WEIGHT: NET 41KG  
MATERIAL: BRASS/MARBLE

MARIE



CENTER TABLE MARIE.CT

DIMENSIONS: H.42CM - Ø.92CM WEIGHT: NET 38KG  
MATERIAL: BRASS/GLASS

CENTER

GIANNA



CENTER TABLE GIANNA.CT

DIMENSIONS: H.36CM - Ø.120CM WEIGHT: NET 55KG  
MATERIAL: BRASS/MARBLE

VICTORIA



CENTER TABLE VICTORIA

DIMENSIONS: H.42CM - Ø.100CM WEIGHT: NET 25KG  
MATERIAL: BRASS/MARBLE



CABINET | CONSOLE | SIBEBOARD



FLUSSO CONSOLE & PATTERN MIRROR

CONSOLE & SIDEBOARD

NAUTILUS



SIDEBOARD NAUTILUS

DIMENSIONS: H.80CM - W.200CM - D.55CM WEIGHT: NET 130KG  
MATERIAL: BRASS/MARBLE

MARIE



CONSOLE MARIE.CON

DIMENSIONS: H.85CM - W.148CM - D.43CM  
MATERIAL: BRASS/GLASS/MARBLE

FLUSSO



CONSOLE FLUSSO.CON

DIMENSIONS: H.86CM - W.150CM - D.40CM WEIGHT: NET 81KG  
MATERIAL: BRASS/MARBLE



MONDRIAN CONSOLE, TRIUMPH WALL LIGHT

## CABINET



CABINET MONDRIAN.CAB

DIMENSIONS: H.170CM - W.100CM - D.45CM WEIGHT: NET 136KG  
MATERIAL: BRASS/WOOD/MIRROR

## MONDRIAN

Mondrian is recognized for the purity of his abstractions, as he radically simplified the elements of his paintings to reflect his perception of the world. His unique artwork moved the designers to develop the Mondrian Collection.

## CONSOLE



TV CONSOLE MONDRIAN.TV

DIMENSIONS: H.48CM - W.200CM - D.46CM WEIGHT: NET 84KG  
MATERIAL: BRASS/WOOD



CONSOLE MONDRIAN

DIMENSIONS: H.85CM - W.150CM - D.46CM WEIGHT: NET 70KG  
MATERIAL: BRASS/WOOD



TALISMAN



CONSOLE TALISMAN.F  
DIMENSIONS: H.82CM - W.120CM - D.45CM  
MATERIAL: BRASS/WOOD

GAYA



BOOKSHELF GAYA  
DIMENSIONS: H.210CM - W.208CM - D.39CM  
MATERIAL: BRASS/WOOD



GAYA BOOKSHELF



MARIE CHAIR



SOFA MARIE.S

DIMENSIONS: H.70CM - W.195CM - D.57CM WEIGHT: NET 47,8KG  
MATERIAL: BRASS/FABRIC



CHAIR MARIE.C

DIMENSIONS: H.75CM - W.60CM - D.50CM WEIGHT: NET 15,1KG  
MATERIAL: BRASS/FABRIC



ARMCHAIR MARIE.ARM

DIMENSIONS: H.73CM - W.84CM - D.58CM WEIGHT: NET 21KG  
MATERIAL: BRASS/FABRIC

## MARIE

Marie Collection was named after Marie Antoinette, the last Queen of France before the French Revolution. This design bears the same name and grandeur it grants. Marie Antoinette was well known for her extravagant and extremely luxurious lifestyle, extrovert personality and love for fashion, parties, and fun. This collection aims to express the burst of lavishness that once lived in the Versailles' Palace, being a contemporary piece that would be the Queen's choice if she lived in our times.



SOFA



SOFA COLOMBO

DIMENSIONS: H.68CM - W.260CM -D.105CM  
MATERIAL: BRASS/FABRIC



SOFA COLOMBO

DIMENSIONS: H.68CM - W.205CM -D.105CM  
MATERIAL: BRASS/FABRIC

MAPLE



SOFA COLOMBO.POL

DIMENSIONS: H.68CM - W.110CM -D.105CM  
MATERIAL: BRASS/FABRIC

## COLOMBO

Colombo collection is named in honour and celebration of Joe Colombo's designs. The modern beige upholstery piece is all about making your living space more cozy, elegant, and refined. This stylish sofa designed for luxurious comfort and relaxed ambience is framed by gold-plated brass applied by hand. Colombo's signature design element is a strong back crafted of soft pillows apart from the frame, as well as its arms that are visually divided with the vertical lines that grant this bespoke furniture a divine look.



HALMA TABLE LAMP, COLOMBO SOFA &amp; MARIE CONSOLE



CARLO ARMCHAIR & CARLO STOOL

ARMCHAIR



ARMCHAIR CARLO.ARM  
DIMENSIONS: H.77CM - Ø.80CM  
MATERIAL: BRASS/FABRIC

STOOL



STOOL CARLO.STO  
DIMENSIONS: H.44CM - Ø.47CM  
MATERIAL: BRASS/FABRIC

# CARLO

Carlo Collection expresses the embodiment of beauty and cosmopolitan vibrations. This stunning furniture collection showcases a fusion of contemporary style and modern art deco. This luxurious modern collection masterfully implements luxury fabrics and exquisite detailing in its design, being the first-class place to rest and recharge.



PROJECTION



STOOL PROJECTION

DIMENSIONS: H.45CM - Ø.40CM WEIGHT: NET 15KG  
MATERIAL: BRASS/WOOD

CHIARA



ARMCHAIR CHIARA

DIMENSIONS: H.67CM - W.72CM - D.60CM WEIGHT: NET 17KG  
MATERIAL: BRASS/FABRIC

STOOL

BLOSSOM



STOOL PROJECTION

DIMENSIONS: H.50CM - Ø.42CM WEIGHT: NET 15KG  
MATERIAL: BRASS/FABRIC

ARMCHAIR & DINING



DINING CHAIR ANNA.ST

DIMENSIONS: H.113CM - W.54CM - D. 54CM WEIG HT: NET 15KG  
MATERIAL: BRASS/FABRIC

MIA



CHAIR MIA

DIMENSIONS: H.113CM - W.54CM - D.54CM WEIGHT: NET 15KG  
MATERIAL: BRASS/FABRIC



CHAIR MIA

DIMENSIONS: H.113CM - W.54CM - D.54CM WEIGHT: NET 15KG  
MATERIAL: BRASS/FABRIC

CHAIR

PENELOPE



CHAIR PENELOPE.C

DIMENSIONS: H.88CM - W.51CM - D.58CM  
MATERIAL: BRASS/FABRIC

WINDSOR



CHAIR WINDSOR

DIMENSIONS: H.90CM - W.40CM - D.40CM WEIGHT: NET 15KG  
MATERIAL: BRASS/FABRIC



CHAIR SEDERE

DIMENSIONS: H.75CM - W.63CM - D.57CM WEIGHT: NET 12KG  
MATERIAL: BRASS/FABRIC



CHAIR SEDERE.BAR

DIMENSIONS: H.100CM - D.63CM WEIGHT: NET 20KG  
MATERIAL: BRASS/FABRIC



CHAIR SEDERE.ARM

DIMENSIONS: H.80CM - W.76CM - D.80CM WEIGHT: NETKG  
MATERIAL: BRASS/FABRIC

## SEDERE

Sedere's Collection was inspired by Italy's way of cementing the interior design industry: with a glamour characteristic of a country forged in sophistication, authenticity and unprecedented sense of style.







ECLIPSE WALL LIGHT, PABLO SOFA, BLOSSOM STOOL &amp; GIANNA CENTER TABLE



SOFA PABLO

DIMENSIONS: H.100CM - W.170CM - D.95CM    WEIGHT: NET 90KG  
MATERIAL: BRASS/FABRIC

## PABLO

Pablo Collection's design was influenced by the art movement of outstanding Pablo Picasso. It materializes the artist's vision and wish to surprise at each perspective, suggesting a three-dimensional form of conception. A powerful combination of materials, such as brass and a mesmerizing upholstery, makes it a sophisticated high-end collection. Pablo's retro design aims to be more than what meets the eye.



ARMCHAIR PABLO.ARM

DIMENSIONS: H.80CM - W.80CM - D.90CM    WEIGHT: NET 48KG  
MATERIAL: BRASS/FABRIC



PROJECTION STOOL, PRISMA PENDANT

CHARLOTTE



BAR TABLE CHARLOTTE.BAR

DIMENSIONS: H.110CM - Ø.70CM  
MATERIAL: BRASS/MARBLE

STREAMLINE



BAR TABLE STREAMLINE.BAR

DIMENSIONS: H.110CM - Ø.70CM WEIGHT: NET 80KG  
MATERIAL: BRASS/MARBLE

SAVOYE



BAR TABLE SAVOYE.BAR

DIMENSIONS: H.75CM - Ø.70CM WEIGHT: NET 44KG  
MATERIAL: BRASS/MARBLE



PENELOPE



BAR CHAIR PENELOPE.BAR

DIMENSIONS: H.108CM - W. 43CM - D. 48CM    WEIGHT: NET 16KG  
MATERIAL: BRASS/FABRIC

ZOLA



BAR CHAIR ZOLA.BAR

DIMENSIONS: H.102CM - W.36CM    WEIGHT: NET 24KG  
MATERIAL: BRASS/WOOD/FABRIC

PROJECTION



BAR STOOL PROJECTION.BAR

DIMENSIONS: H.85CM - Ø.35CM    WEIGHT: NET 27,6KG  
MATERIAL: BRASS/FABRIC



PENELOPE BAR CHAIR & GIO PENDANT



PROJECT BY MEBLOLIGHT / FLOW INTERIORS

## AMMIRA



MIRROR AMMIRA.MIR

DIMENSIONS: Ø.120CM - D.6CM WEIGHT: NET 28KG  
MATERIAL: BRASS/MIRROR

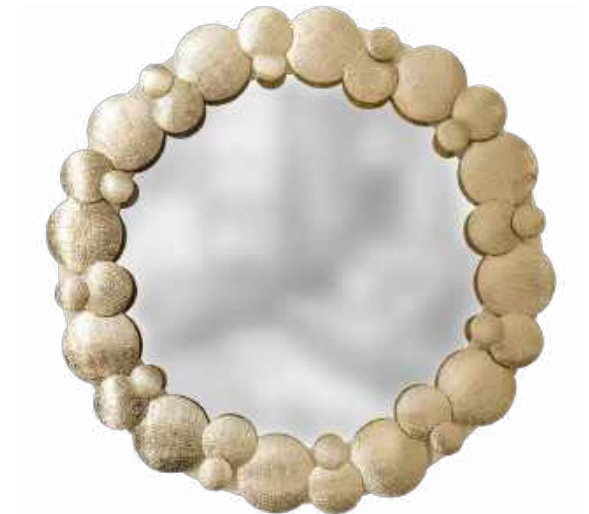
## GOLDEN EYE



MIRROR GOLDEN EYE

DIMENSIONS: Ø.80CM WEIGHT: NET 30KG  
MATERIAL: BRASS/MIRROR

## CANYON



MIRROR 9171.120

DIMENSIONS: Ø.130CM WEIGHT: NET 42KG  
MATERIAL: BRASS/MIRROR/WOOD

## NAUTILUS



MIRROR NAUTILUS

DIMENSIONS: Ø.100CM - D.10CM WEIGHT: NET KG  
MATERIAL: BRASS/MIRROR/WOOD



# PATTERN



MIRROR PATTERN.MIR  
 DIMENSIONS: Ø.80CM  
 MATERIAL: BRASS/MIRROR

# ROMA



MIRROR ROMA.MIR  
 DIMENSIONS: Ø.120CM WEIGHT: NET 14KG  
 MATERIAL: BRASS/MIRROR

# MONDRIAN



MIRROR MONDRIAN.MIR  
 DIMENSIONS: Ø.120CM WEIGHT: NET 19KG  
 MATERIAL: BRASS/MIRROR

# MATISSE



DIVIDER MATISSE  
 DIMENSIONS: H.240CM - W.97CM - D.4CM WEIGHT: NET 74KG  
 MATERIAL: BRASS/MIRROR



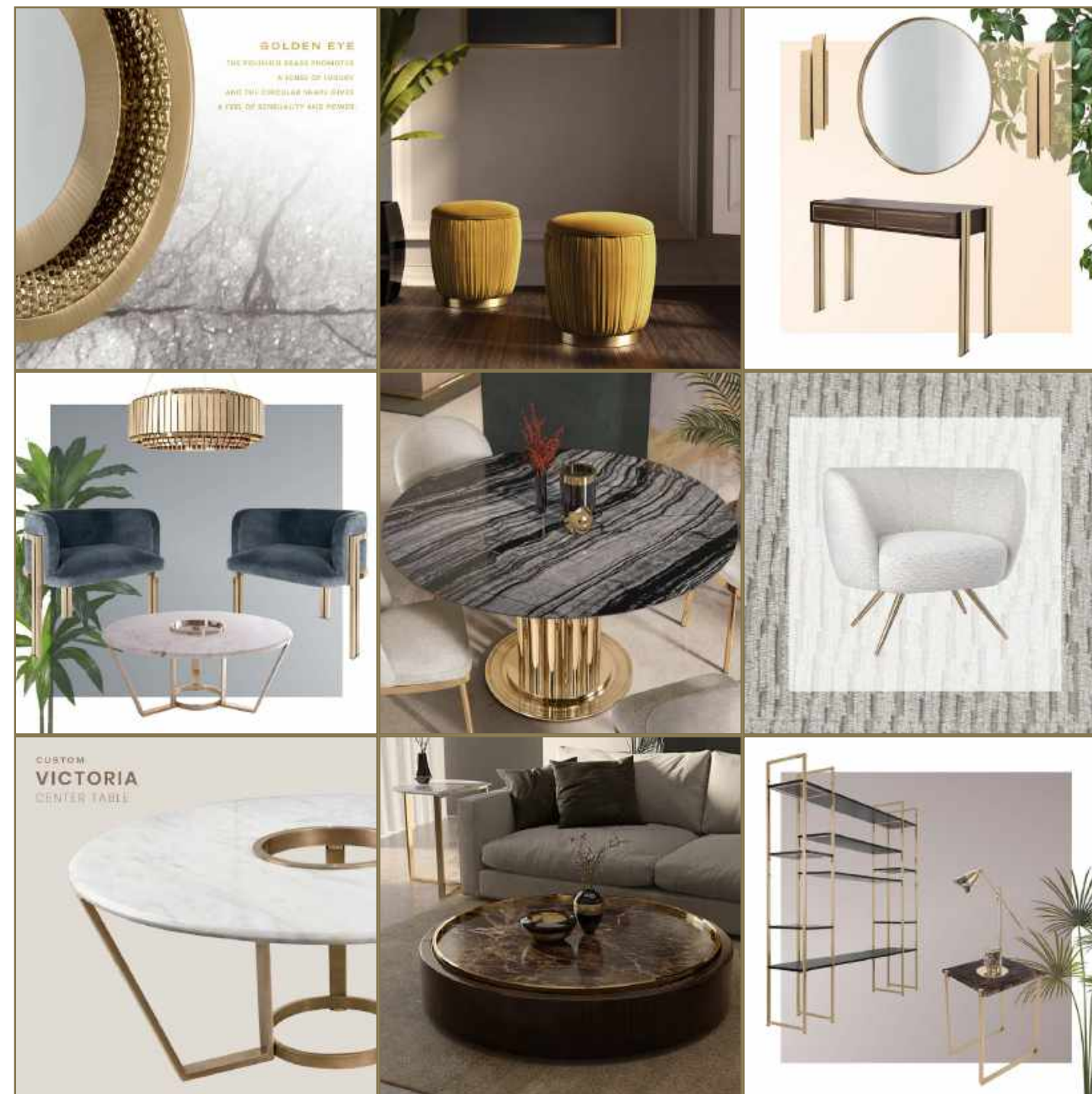
MATISSE DIVIDER





WELCOME TO  
THE VISIONARY  
WORLD OF TIMELESS  
INTERIOR MASTERPIECES

## A SECRET OF LASTING LEGACY IN LUXURY LIFESTYLE DESIGN



MORE COMING SOON

FOLLOW INSTAGRAM

[INSTAGRAM.COM/CASTROINTERIORS/](https://www.instagram.com/castrointeriors/)

VISIT WEBSITE

[CASTROINTERIORS.COM/](https://www.castrointeriors.com/)



# PROJECTS & PARTNERSHIPS



CUSTOM ROYAL SUSPENSION, ROYAL WALL LIGHT  
LOVE DESIGN, PORTUGAL





AVOLTO PENDANT  
MEBLOLIGHT/FLOW INTERIORS, POLAND



AUREA SUSPENSION  
MEBLOLIGHT/FLOW INTERIORS, POLAND



STREAMLINE SUSPENSION, CUSTOM STREAMLINE WALL LIGHT  
MEBLOLIGHT/FLOW INTERIORS, POLAND





TWIST SUSPENSION  
MEBLOLIGHT/FLOW INTERIORS, POLAND



RAVEL SUSPENSION  
MEBLOLIGHT/FLOW INTERIORS, POLAND

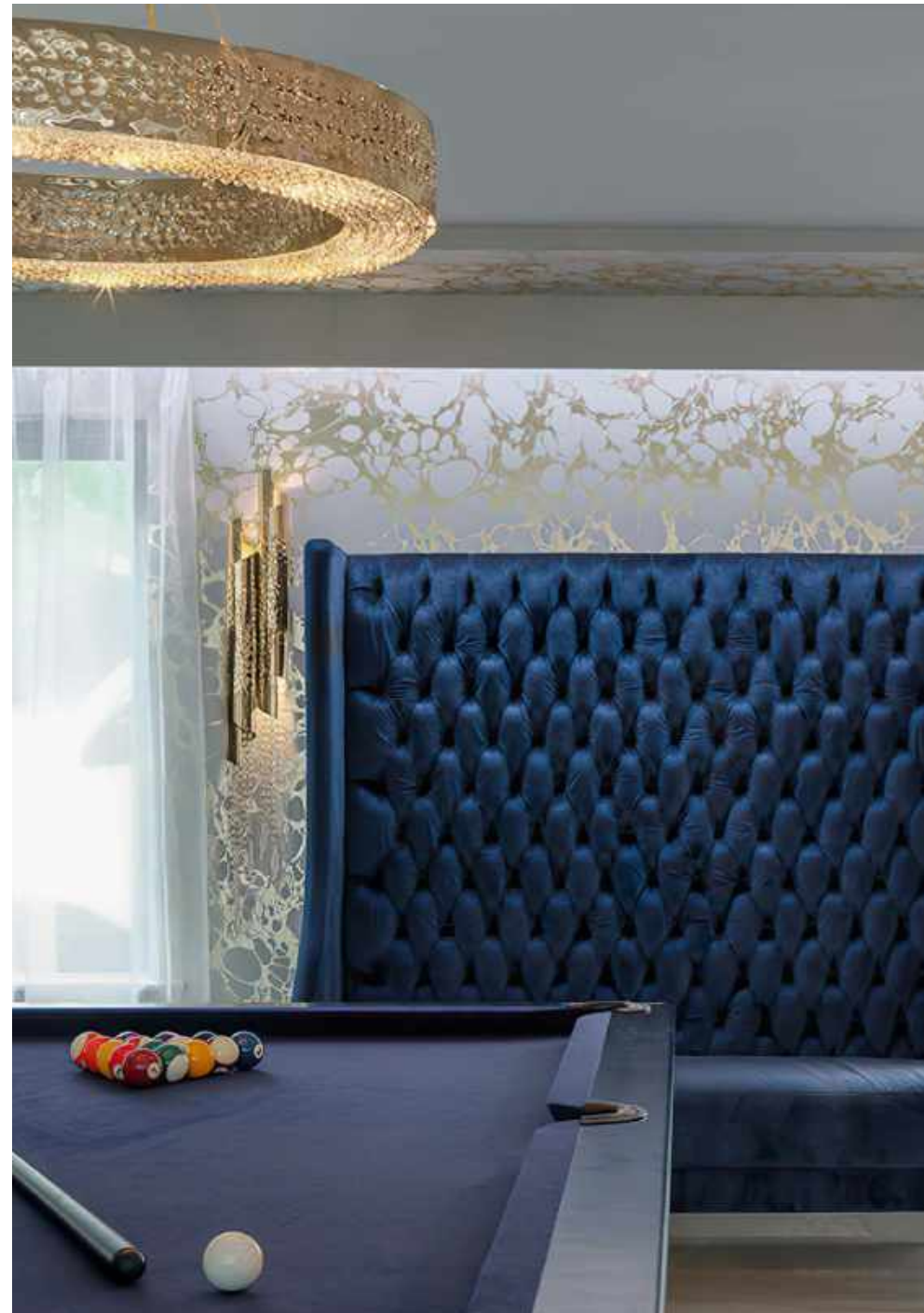


CUSTOM ROYAL SUSPENSION, ROYAL WALL LIGHT  
ALENA CHASHKINA, RUSSIA





MONDRIAN SUSPENSION  
MÓVEIS SPM, PORTUGAL



MAEVE SUSPENSION, AVOLTO WALL LIGHT  
ASTOUNDING INTERIORS, LONDON





CUSTOM MONDRIAN SUSPENSION  
PRIVATE PROJECT, PORTUGAL



ROYAL WALL LIGHT  
LOVE DESIGN, PORTUGAL



GALAXY SUSPENSION  
SVETLANA KRASILNIKOVA FROM KSV DESIGN, UKRAINE





DIVITA WALL LIGHT  
ALDO MANZONI AT EUROLUCE '19



RIVIERA WALL LIGHT  
OPERA CONTEMPORARY AT EUROLUCE '19



STREAMLINE TABLE LAMP  
OPERA CONTEMPORARY AT EUROLUCE '19



# ALL DESIGNS

## SUSPENSION



**ALCHEMY** 9590.80  
H.40 – Ø.80 CM



**ARCADE** 9880.100 / .80 / .60  
H.40 – Ø.100 / .80 / .60 CM



**ARCADE** 9880.150X40  
H.40 – W.150 – D.40 CM



**AUREA** 9043.80  
H.80 – Ø.80 CM



**AVOLTO** 9120.3  
H.125 – Ø.40 CM



**BLAZE** 9610.150  
H.270 – Ø.150 CM



**BOLERO** 9540.3  
H.170 – Ø.45 CM



**CONSTELLATION** 9910.100  
H.200 – Ø.90 CM



**CRYSTALLINE** 9530.6  
H.300 – Ø.40 CM



**EUPHORIA** 8940.100 / .80 / .60  
H.15 – Ø.100 / .80 / .60 CM



**FLUSSO** 9290.4  
H.150 – Ø.100 CM



**FLUTE** 9550.6  
H.198 – Ø.20 CM



**GALAXY** 9110.120  
W.120 – Ø.20 CM



**GALILEI** 9150.70  
H.70 – Ø.70 CM



**HALMA** 9620.80  
H.60 – Ø.80 CM



**HALO** 9600.120  
H.32 – Ø.120 CM



**HALO** 9600.6  
H.210 – Ø.40 CM



**HEMERA** 9520.90  
H.60 – Ø.100 CM



**INTENSE** 9093.5  
H.150 – Ø.120 CM



**KINGDOM** 9230.170X40  
H.55 – W.170 – D.40 CM



**LABICS** 9710.10  
H.160 – W.140 – D.150 CM



**LOUVRE** 9480.110  
H.65 – Ø.110 CM



**MADISON** 8820.9 / 6  
H.30 – Ø.82 / 60 CM



**ROYAL** 9160.100  
H.100 – Ø.100 CM



**SAFI** 8850.19  
H.265 – Ø.80 CM



**SAFI** 8851.10  
H.55 – Ø.80 CM



**SAFI** 8859.9  
H.50 – Ø.75 CM



**MAEVE** 8860.100 / 80 / 60 / 40  
H.7 – Ø.100 / 80 / 60 / 40 CM



**MAEVE** 8864.80 / 60 / 40  
H.7 – Ø.80 / 60 / 40 CM



**MAEVE** 8864.2  
H.16 – Ø.80 CM



**MASTERY** 9301.100/80  
H.50 – Ø.80 / H.70 – Ø.100 CM



**SKYLAR** 9870.100  
H.35 – Ø.100 CM



**SONATA** 9010.8  
H.32 – Ø.90 CM



**SPACIUM** 9190.100  
H.10 – Ø.100 CM



**STREAMLINE** 9270.100 / 80  
H.26 – Ø.100 / 80 CM



**METIER** 9590.1  
H.8 – W.115CM



**METIS** 9640.100 / 80 / 60  
H.5 – Ø.100 / 80 / 60 CM



**METIS** 9840.100 / 80 / 60  
H.5 – Ø.100 / 80 / 60 CM



**METIS** 9642.100 / 80 / 60  
H.5 – Ø.100 / 80 / 60 CM



**STREAMLINE** 9270.150X40  
H.26 – W.150 – D.40 CM



**STREAMLINE** 9270.4  
H.90 – Ø.100 CM



**STREAMLINE** 9272.2  
Ø.9 – W.100 CM



**TWIST** 5915  
H.220 – Ø.120 CM



**METIS** 9640.170X40  
H.5 – H.170 – D.40 CM



**METIS** 9643.40/80/100  
H.5 – W.40 - D.40 / W.80 - D.80 / W.100 - D.100 CM



**METIS** 9641.100  
H.5 – H.100 – D.50 CM



**METIS** 9841.100  
H.5 – H.100 – D.50 CM



**ZENITH** 9900.160X70  
H.48 – W.164 – D.70 CM



**MONDRIAN** 9180.80  
H.70 – Ø.80 CM



**MONDRIAN** 9180.170X55  
H.74 – W.170 – D.55 CM



**MONDRIAN** 9183.80  
H.40 – Ø.80 CM



**RAVEL** 9020.80  
H.150 – Ø.80 CM

PENDANT



**AVANY** 9570.25  
H.110 – Ø.25 CM



**AVOLTO** 9120.1  
H.85 – Ø.7 CM



**BOLERO** 9540.1  
H.48 – Ø.18 CM





**FLUSSO** 9290.40  
H.46 – Ø.40 CM



**GIO** 9890.1  
H.50 – Ø.5 CM



**WW** 9620.1  
H.60 – Ø.19 CM



**HALO** 9600.1  
H.32 – Ø.11 CM



**HALMA** 9621.20  
H.60 – W.18 CM



**HALO** 9601.2  
H.32 – W.11 – D.15 CM



**LIBERTY** 9451.130X20  
H.110 – W.23 – D.9 CM



**MADISON** 8821.2  
H.30 – W.9 CM



**HALO** 9600.20 / 25  
H.38 – Ø.20 CM / H.46 – Ø.25 CM



**LABICS** 9710.2  
H.80 – W.131 CM



**PRISMA** 9470.30  
H.46 – W.30 CM



**ROYAL** 9160.40  
H.56 – Ø.40 CM



**MAEVE** 8861.40  
H.8 – W.40 – D.22 CM



**MASTERY** 9300.190X70  
H.70 – W.190 CM



**MASTERY** 9300.30 / 25  
H.30 – W.23 CM / H.25 – W.19 CM



**METIER** 9591.2  
H.115 – D.8 CM



**SAFI** 98852.60 / 48 / 36 / 24  
H.102 / 84 / 66 / 48 – Ø.7 CM



**MONDRIAN** 9182.6  
H.58 – W.42,5 – D.15 CM



**MONDRIAN** 9182.4  
H.40 – W.26 CM



**NOLAN** 9730.2  
H.70 – W.9 – D.11 CM



**RAVEL** 9021.50  
H.75 – W.50 – D.6 CM

WALL



**ARCADE** 9881.40  
H.51 – W.40 – D.20 CM



**AVOLTO** 9121.4  
H.99 – W.14 – D.10 CM



**AVOLTO** 9121.2  
H.85 – W.7 – D.10 CM



**RAVEL** 9022.50 / 30  
Ø.50 / 30 – D.6 CM



**RIVIERA** 9701.4  
H.56 – W.18 CM



**RIVIERA** 9701.2  
H.50 – W.9 CM



**ROYAL** 9161.40  
H.56 – W.40 – D.25 CM



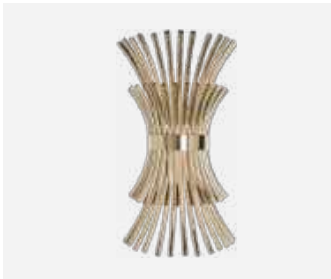
**ECLIPSE** 9700.40  
Ø.40 CM



**ELVEN** 9720.2  
H.60 – W.9 – D.11 CM



**EUPHORIA** 8941.40 / 30  
H.15 – W.40 / 30 – D.22 CM



**FLUSSO** 9291.40  
H.80 – W.42 CM



**SAFI** 8854.4  
H.55 – W.35 – D.15 CM



**SAFI** 8854.2  
H.50 – W.20 – D.13 CM



**SKYLAR** 9871.40  
H.65 – W.40 – D.25 CM



**STREAMLINE** 9271.2  
H.67 – W.9 CM



**TRIUMPH** 9340.2  
H.85 – W.11 CM



**TRIUMPH** 9342.130X20  
H.110 – W.22 CM

TABLE



**AVOLTO** 9122.4  
H.90 – W.25 CM



**BAUHAUS** 3050.1  
H.74 – Ø.40 CM



**CHANTEL** 3054.1  
H.58 – Ø.20 CM



**CHANTEL** 3055.1  
H.58 – Ø.20 CM



**HALMA** 9621.6  
H.65 – Ø.23 CM



**HALO** 9603.6  
H.67 – Ø.20 CM



**MANHATTAN** 3047.1  
H.74 – Ø.40 CM



**PETRA** 3044.1  
H.71 – Ø.40 CM



**PETRA** 3044.1CR  
H.71 – Ø.40 CM



**SAFI** 8853.2  
H.70 – W.25 CM



**SAFI** 8856.1  
H.65 – Ø.40 CM



**SATURN** 3052.1  
H.76 – Ø.40 CM



**SAVOYE** 9583.1  
H.75 – W.75 – D.24 CM



**SPARTA** 3033.1  
H.66 – Ø.40 CM



**STREAMLINE** 9270.5  
H.70 – Ø.20 CM



**STREAMLINE** 9273.1  
H.68 – Ø.40 CM



**TAYLOR** 3048.1  
H.73 – Ø.40 CM



**TRIUMPH** 3046.1  
H.62 – Ø.40 CM

FLOOR



**AVANY** 9571.6  
H.180 – Ø.58 CM



**ECLIPSE** 9703.4  
H.180 – Ø.32 CM



**HALO** 9604.6  
H.178 – Ø.30 CM



**ROYAL** 9162.40  
H.171 – Ø.40 CM



**SAFI** 8855.3  
H.172 – Ø.40 CM



**SAVOYE** 9581.1  
H.160 – W.90 – D.25 CM



**SAVOYE** 9582.3  
H.180 – Ø.20 CM



**STREAMLINE** 9270.10  
H.184 – Ø.32 CM



SUSPENSION



**ATLANTIDA** 8000.100 /,150  
H.200 – W.100 CM / H.300 – W.150 CM



**GATSBY** 9240.100  
H.180 – Ø.100 CM



**LEVIEV** 9850.80  
H.10 – Ø.80 CM



**LISBOA** 3431.80X80  
H.55 – W.80 – D.80 CM



**MYSTIC** 5984.25  
H.225 – Ø.120 CM



**RIMINI** 4528.180 /,150  
H.180 /,150 – Ø.40 CM



**VARSOVIA** 3460.100 /,70  
H.35 – Ø.100 /,70 CM



**VARSOVIA** 3463.30  
H.35 – W.30 – D.17 CM

CEILING



**DENVER** 3413.70  
H.22 – W.70 – D.70 CM



**MYSTIC** 5981.25  
H.25 – Ø.25 CM

PENDANT

WALL



**ATLANTIDA** 8011.3  
H.80 – W.44 – D.25 CM



**ATLANTIDA** 8002.3  
H.93 – W.25 – D.30 CM



**GATSBY** 9243.5  
H.95 – W.40 CM

TABLE



**VARSOVIA** 3462.30  
H.60 – Ø.30 CM

FLOOR



**VARSOVIA** 3464.40  
H.165 – Ø.35 CM

SUSPENSION



CASABLANCA 5140.10  
H.60 – Ø.105 CM



MARBELLA 6470.18  
H.85 – Ø.90 CM



SWAN LAKE 6810.12  
H.80 – Ø.125 CM



TANGER 5100.16  
H.70 – Ø.80 CM



VIENNA 6175.18  
H.90 – Ø.100 CM

WALL



CASABLANCA 5146.2  
H.45 – W.37 CM



MARBELLA 6473.2  
H.50 – W.26 CM



SWAN LAKE 6811.2  
H.50 – W.55 CM



TANGER 5104.2  
H.40 – W.35 CM



VIENNA 6177.6  
H.70 – W.60 – D.35 CM

TABLE



CASABLANCA 5147.2  
H.41 – Ø.20 CM



MARBELLA 6472.1  
H.80 – Ø.40 CM



VIENNA 6176.1  
H.68 – Ø.40 CM

FLOOR



CASABLANCA 5149.3  
H.170 – Ø.50 CM



MARBELLA 6474.1  
H.177 – Ø.45 CM



VIENNA 6178.1  
H.190 – Ø.55 CM



TABLES



**GIANNA** GIANNA.CT  
H.36 – Ø.120 CM



**CHARLOTTE** CHARLOTTE  
H.75 – Ø.160 CM



**EUPHORIA** 8943.70  
H.40 – Ø.70 CM



**COLOMBO** COLOMBO.2S  
H.68 - W.205 - D.105 CM



**COLOMBO** COLOMBO.3S  
H.68 - W.260 - D.105 CM



**MARIE** MARIE.C  
H.75 – W.60 – D.50 CM



**MARIE** MARIE.ARM  
H.73 – W.84 – D.58 CM



**HARING** HARING  
H.80 – Ø.120 CM



**JADE** JADE  
H.61 – W.45 – D.45 CM



**JADE** JADE.SM  
H.52 – W.30 – D.30 CM



**MARIE** MARIE.CT  
H.42 – Ø.92 CM



**MARIE** MARIE.S  
H.70 – W.195 – D.55 CM



**MIA** MIA  
H.113 - W.54 - D.54 CM



**PABLO** PABLO.ARM  
H.80 – W.80 – D.90 CM



**PABLO** PABLO  
H.100 – W.170 – D.95 CM



**MARIE** MARIE.CT.SM  
H.35 – Ø.60 CM



**MARIE** MARIE.ST  
H.60 – Ø.40 CM



**PATTERN** PATTERN  
H.80 – Ø.120 CM



**VICTORIA** VICTORIA  
H.42 – Ø.100 CM



**PROJECTION** PROJECTION  
H.45 – Ø.40 CM



**PENELOPE** PENELOPE.C  
H.87 - W.51 - D.58CM



**SEDERE** SEDERE  
H.75 – W.63 – D.57 CM



**WINDSOR** WINDSOR  
H.90 – W.40 CM

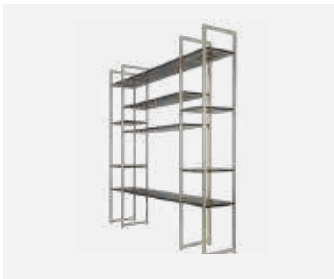


**VICTORIA** VICTORIA.ST  
H.62 – Ø.40 CM

CABINETS  
& CONSOLES



**FLUSSO** FLUSSO  
H.86 - W.150 - D.40 CM



**GAYA** GAYA  
H.210 - W.208 - D.39CM



**MARIE** MARIE.COM  
H.85 - W.148 - D.43 CM

UPHOLSTERY



**BLOSSOM** BLOSSOM  
H.50 – Ø.42 CM



**CHIARA** CHIARA  
H.67 – W.72 - D.60 CM



**COLOMBO** COLOMBO.1S  
H.68 - W.110 - D.105 CM



**MONDRIAN** MONDRIAN  
H.85 – W.155 – D.46 CM



**MONDRIAN** MONDRIAN.TV  
H.48 – W.200 – D.46 CM



**MONDRIAN** MONDRIAN.CAB  
H.170 – W.100 – D.45 CM



**STREAMLINE** STREAMLINE  
H.90 – W.130 – D.45 CM



**TALISMAN** TALISMAN.F  
H.82 – W.120 – D.45 CM

MIRRORS  
& DIVIDER



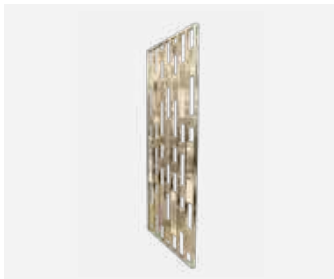
**AMMIRA** AMMIRA.MIR  
Ø.120 – D.6 CM



**CANYON** 9171.120  
Ø.130 CM



**GOLDEN EYE** GOLDEN EYE  
Ø.80 CM



**MATISSE** MATISSE  
H.240 – W.97 – D.4 CM



**MONDRIAN** MONDRIAN.MIR  
Ø.120 CM



**PATTERN** PATTERN.MIR  
Ø.80 CM



**ROMA** ROMA.MIR  
Ø.120 - D.6 CM

BAR FURNITURE



**CHARLOTTE** CHARLOTTE.BAR  
H.110 – Ø.70 CM



**PENELOPE** PENELOPE.BAR  
H.108 – W.43 - D.48 CM



**PROJECTION** PROJECTION.BAR  
H.85 – Ø.35 CM



**SAVOYE** SAVOYE.BAR  
H.75 – Ø.70 CM



**STREAMLINE** STREAMLINE.BAR  
H.110 – Ø.70 CM



**ZOLA** ZOLA.BAR  
H.102 – W.36 CM

# TECHNICAL INFORMATION

## LAMP SOCKETS

STANDART LAMP SOCKETS USED:

E14

E27

G4

G9

GU10

LIGHTING PRODUCTS ARE COMPATIBLE WITH LAMPS UP TO 40W.

## CABLES

STANDART SIZE:

1 METER

(SUSPENSIONS AND PENDANTS)

DIFFERENT SIZES ARE AVAILABLE UNDER REQUEST.

## CHAINS

STANDART LINKS:

5 = 20 CENTIMETERS

(SUSPENSIONS AND PENDANTS)

DIFFERENT NUMBER OF LINKS ARE AVAILABLE UNDER REQUEST.

## MEASURES

MEASURES OF CHANDELIERS, SUSPENSIONS  
AND PENDANT LAMPS DO NOT INCLUDE THE CABLES.

MEASURES OF TABLE LAMPS INCLUDE LAMPSHADES.

## LACQUERED

LACQUERED DESIGNS' COLOURS CAN BE  
CUSTOMIZED ACCORDING TO THE RAL COLOR CHART.

## WOOD

PRODUCTS MADE WITH WOOD CAN BE CUSTOMIZED WITH  
DIFFERENT TYPES OF WOOD UNDER REQUEST.



# CUSTOMIZATION OPTIONS

## BRASS FINISHES



## TEXTURE



HAMMERED



CANYON HAMMERED

## CHAINS



GOLD



NICKEL



BLACK NICKEL



COPPER



CRYSTALS

CRYSTAL COATING COLORS



CRYSTAL ROCKS



012 001 METSI



012 280 NUT



012 280

THE MATERIALS PRESENTED REQUIRE CONFIRMATION OF AVAILABILITY

CRYSTALS



CUSTOMIZATION OPTIONS FOR ARCADE AND HALMA COLLECTIONS ARE AVAILABLE  
IN ANTHRACITE, CRYSTAL, AND TOPAZ.



LAMPSHADE FABRIC

TEXTURED FABRIC



SEAMS OF GREY



NUDE PEACH



BLACK RIBBED



SYNTHETIC BROWN

ORGANZA



BLACK



GREY



AMBER



BEIGE



WHITE



BLUE



LILAC



RED



BORDEAUX



GREEN

CHINTZ



02



85



13



18



92



WHITE



51



50



64



PURPLE BLUE



BLACK

THE MATERIALS PRESENTED REQUIRE CONFIRMATION OF AVAILABILITY

LAMPSHADE FABRIC

SAFIM



01



02



03



04



05



06



07



08



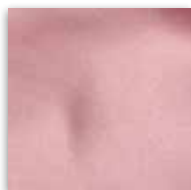
09



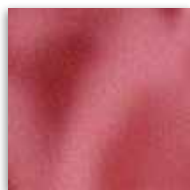
10



11



12



13



14



15



16



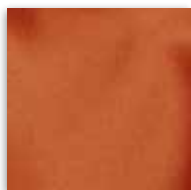
17



18



19



20



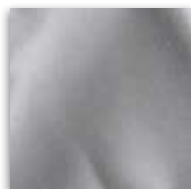
21



22



23



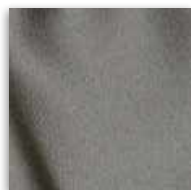
24



25



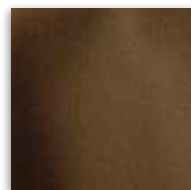
26



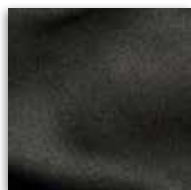
27



28



29



30

THE MATERIALS PRESENTED REQUIRE CONFIRMATION OF AVAILABILITY

MARBLE



EMPERADOR



MARQUINA



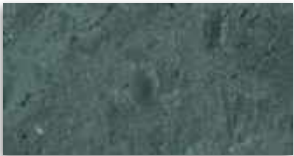
ESTREMOZ



CARRARA



SAHARA NOIR



GUATEMALA

OTHER MARBLE OPTIONS AVAILABLE UNDER REQUEST.

WOOD



EBONY



WALNUT



EUCALYPTUS

OTHER WOOD OPTIONS AVAILABLE UNDER REQUEST.

GLASS



TRANSPARENT



BRONZE

LACQUERED

ALL [RAL CHART](#) COLOURS AVAILABLE UNDER REQUEST.



WHITE LACQUERED



BLACK LACQUERED

ELECTRIC WIRES



GOLD



BLACK



GREY



TRANSPARENT



FABRIC WHITE



FABRIC BLACK

THE MATERIALS PRESENTED REQUIRE CONFIRMATION OF AVAILABILITY

UPHOLSTERY FABRIC

PARIS (VELVET) CLASS A



CREAM



BEIGE



CHAMPAGNE



LION



CHOCOLATE

LIVERPOOL (TEXTURED FABRIC) CLASS A



10 CREAM



11 BEIGE



20 CAMEL



19 TRUFA



18 CHOCOLATE

ASCOT (WOLLY) CLASS B



01 NATA



04 TOFFEE



09 TAUPE



06 MOUSE



13 BRICK

FAUX FR (TEXTURED FABRIC) CLASS B



01 DUST WHITE



02 DUST SAND



06 DUST CLOUD



05 DUST GREIJE



03 DUST WOOD

SALON EASY CLEAN (JACQUARD VELVET) CLASS B



01 NATURAL WHITE



02 ECRU



03 OYSTER



04 SAND



05 LINEN

FOR MORE COLOUR OPTIONS [CLICK HERE](#)



UPHOLSTERY FABRIC

PROJECT / PROJECT FR (VELVET) CLASS B



PROJECT FORM (VELVET) CLASS B



EVOLVE FLOR (SYNTHETIC LEATHER) CLASS B



EVOLVE PREMIUM (SYNTHETIC LEATHER) CLASS B



PIELTECH OXIDON (SYNTHETIC LEATHER) CLASS B



FOR MORE COLOUR OPTIONS CLICK HERE

UPHOLSTERY FABRIC

OMEGA (SYNTHETIC LEATHER) CLASS B



MITTER (JACQUARD VELVET) CLASS C



MODERNIST (JACQUARD VELVET) CLASS C



CHRISTIAN FISCHBACHER (JACQUARD VELVET) CLASS C



FOR MORE COLOUR OPTIONS CLICK HERE

# UPHOLSTERY FABRIC

## COUNTRY (NATURAL LEATHER) CLASS D



042002 KHAKI



042008 BRANDY



042001 SOUL



042005 BORDEAUX



042004 TRUFFLE

## LAGUNA (NATURAL LEATHER) CLASS D



08601 WHITE



08636 IVORY



08639 MUD



08660 ZINC



08611 BROWN

FOR MORE COLOUR OPTIONS [CLICK HERE](#)





HANDCRAFT EXPERTS  
SINCE 1978

[WWW.CASTROLIGHTING.COM](http://WWW.CASTROLIGHTING.COM)

[INFO@CASTROLIGHTING.COM](mailto:INFO@CASTROLIGHTING.COM)



PRODUCTS MANUFACTURED ACCORDING THE EUROPEAN NORM OF SECURITY EN 60 598-1



PRODUCTS ADJUSTED FOR INSTALLATION IN SURFACES NORMALLY INFLAMMABLE



PRODUCTS OF CLASS II. THE ELECTRIC ISOLATION IS DOUBLE OR REINFORCED



PRODUCTS WITH THE POSSIBILITY OF INSTALLATION OF LOW-ENERGY CONSUMPTION BULBS

Castro Lighting reserves the right, without prior notice, to discontinue collections, products or change specifications and prices on products. Castro lighting is free to commit any design changes without prior notice so measures and sizes must always be confirmed. The sizes indicated in the catalogue are only approximate, therefore, a small difference is always to be expected. The colours and images reproduced in print are only indicative and may vary from the original products.



TEL: +351 224 853 170 | FAX: +351 224 895 378 | MOB: +351 916 164 630

