

**BRANDVAN**  
® **EGMOND**



ORPHEUS  
pièces de résistance



A detailed mosaic depicting the mythological figure Orpheus. He is seated in the center, wearing a yellow tunic with a blue sash and a red and blue patterned shawl. He holds a lyre with both hands, looking towards the right. To his left is a stylized tree with blue leaves. To his right, a large brown bird, possibly a phoenix or a similar mythical creature, stands on a rock. In the foreground, a lion and a dark-colored dog are looking towards Orpheus. The entire scene is framed by a decorative border with a repeating scalloped pattern in shades of brown and gold.

# Orpheus

Design by William Brand

One of the most legendary poets and singers in Greek mythology is Orpheus. He sang so beautifully that he touched everyone and all around him. The King and Queen were moved to tears, but also the birds, trees and even the stones were hypnotized by his magical voice.

We have found several objects of desire amidst the nymphs and trees, and formed them into new lights.

Precious stones, a golden mineral and a delicate porcelain rose: all captured in a protective embrace of casted bronze.



# Orpheus Nymphenburg

Limited edition

The handcrafted porcelain rose is from Porzellan Manufaktur Nymphenburg, creating the finest porcelain for over 260 years.

Invited by Nymphenburg to create a new concept, William Brand sought to combine European heritage with a contemporary sculpture from his hands.

The delicate porcelain rose, made to perfection by skilled hands in Munich, is embraced by casted bronze which protects it from the passing of time. The Orpheus is meant to last beyond a single lifetime and passed on to the next generation.

The Orpheus Nymphenburg comes in a limited edition of 89 pieces, referring to the founding year of our atelier: 1989.



NYMPHENBURG  
1747



THE ORPHEUS NYMPHENBURG COMES IN A  
LIMITED EDITION OF 89 PIECES, REFERRING TO  
THE FOUNDING YEAR OF OUR ATELIER: 1989



Nymphenburg Porcelain

Creating the finest porcelain since 1747, Nymphenburg is known to provide magnificence to the finest and most historic homes of the world.

Crafted on the Nymphenburg palace grounds outside Munich, their handcrafted porcelain has been treasured by aristocracy and collectors from around the world.

Their production techniques have been handed over from one generation to the other. Working with artists from around the world has allowed them to continue to enchant their clients and collectors for all these centuries.



Nymphenburg Palace in Munich, Germany.







limited edition



# Precious Stones

Selected from various mines around the world

Presenting objects of desire as a pedestal, yet captured in the protective embrace of casted bronze, the Orpheus holds in her hand the earth's most exquisite natural treasures.

Formed very near to the crust of the earth over hundreds of years, we humans have, as long as we exist, appreciated precious stones as decorative ornaments, religious symbols or valued them for their supposed healing powers. Several of those precious stones have found their way to our atelier from various mines around the globe.

Other precious stones can also be sourced, upon request. Given the scarcity of these treasures, we will source the stones on a case by case basis for our clients: we are at the hands of what nature offers us.

MILLIONS OF YEARS OF UNDEFINED ENERGY,  
CAPTURED AND RADIATING ITS MYSTICAL POWER



Orpheus Amethyst

This precious stone, embraced through the millennia by ancient Greeks , Russian Tsars and English Bishops is seen as a protector against dark magic, and a symbol for those in love.







CREATE YOUR OWN COMPOSITION OF BEAUTY AND LIGHT,  
IN ANY FORMATION





## Orpheus Pyrite

This stunning mineral, seemingly made by human hands but in fact found in nature, is called Pyrite. Given its strong resemblance to gold, it was nicknamed by gold diggers as 'fool's gold'. The surfaces reflect the light in a fabulous way; creating a splendour of golden light.



Orpheus Pyrite. Technical details page 42







Orpheus Malachite  
Limited available

The soft velvet look of raw malachite and its vibrant green colour have a mesmerizing effect. Coming closer, you will see a movement and a flow of energy in its lines and circles.

Ancient cultures have cherished this stone as much as we still do: the Egyptians, for example, believed that the afterlife contained an eternal paradise, referred to as the 'Field of Malachite.'

Orpheus Malachite. Technical details page 42









## Orpheus Labradorite

This half raw and half polished stone bares a stunning play of colour, which sparkle over large areas of the grey-coloured mineral. Associated with mystical legends of the Canadian Northern lights, a rich palette of blue, green, red, purple, yellow and gold is seen on labradorite and together with artificial light is brought towards absolute brilliance.





Orpheus Calcite

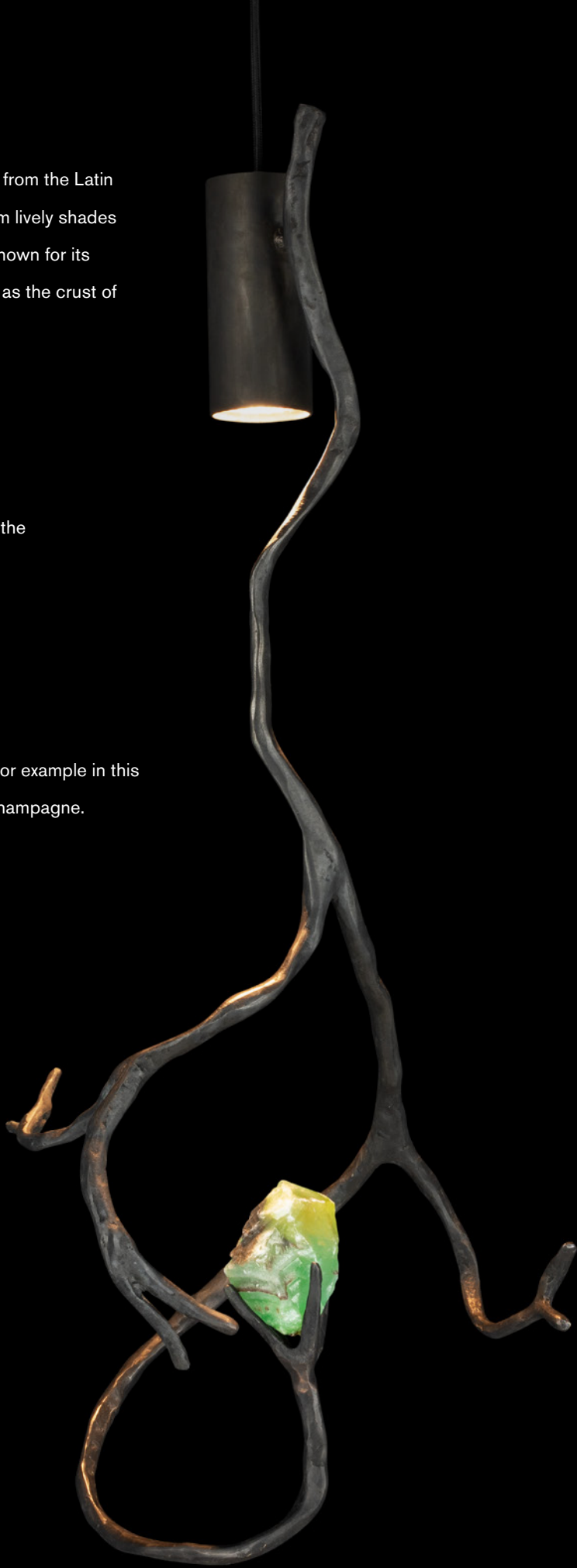
Found in different colours, the calcite – coming from the Latin word calx, meaning lime- we sourced varies from lively shades of lime green to the extravagance of emerald. Known for its softness, it is found on both the surface as well as the crust of the earth.

Orpheus Orange Calcite

Orange combines the happiness of yellow, and the energy of red: representing joy and sunshine.

Orpheus Champagne Calcite

Calcite is found in different forms and colours, for example in this beautiful mixture between yellow and orange: champagne.









Orpheus Black Tourmaline

Found in different corners of the world – from the Southern part of the Indian subcontinent to the West of Brazil, tourmaline can be cherished in different colours . The deep dark black we selected, is by some considered a protective stone, absorbing negativity and preventing unwanted energy from entering your home, body or spirit.





Orpheus Rock Crystal

Rock crystal is considered by some as a healing mineral, but by all appreciated for its clarity reminiscent of tranquil and pure water.



Composition of Orpheus Rock Crystal and Orpheus Downlight. Technical details page 42



Orpheus Pyrite on Basalt

Brought to the surface of the earth in a rapid stream of lava, this distinctive stone carries seemingly organized cubes of pyrite on its rough yet sandy basalt stone.



Orpheus Pyrite on Basalt. Technical details page 42



# The earth's most exquisite natural treasures

On request

Our diverse and magnificent planet offers a wealth of treasures in the form of precious stones, which can be used in the Orpheus. You are welcome to share your personal wishes for other stones with our atelier, and we will explore the possibilities according to your request.



ALL OF US STILL CARRY OUR INNER CHILD. STONES HAVE  
ETERNAL ATTRACTION

- WILLIAM BRAND



Compositions of Orpheus

To the Orpheus collection, two whimsical models are formed to create bigger lighting compositions: a humble twig and a downlight.



Orpheus Downlight, Orpheus Twig and Orpheus Malachite. Technical details page 42





## Authenticity and Limited Edition

Every lighting sculptures from our atelier comes with a unique certificate, confirming it's authenticity and quality.

The Nymphenburg porcelain rose comes in a limited edition of 89 pieces, referring to the year that our atelier was founded: 1989.

The precious stones are sourced from mines around the world, we are depended on what the Earth offers us.

## William Brand

Founder / Designer

William Brand graduated from the School of Arts in Utrecht, The Netherlands as an architect and sculptor. He founded Brand van Egmond in 1989.

In his architectural work he has always been a minimalist, while his lighting sculptures are evocative, characterful and radiate a powerful sculptural presence. He does not consider his creations to be part of a trend, nor does he have a wish for this. He takes pride in seeing his work handed over to the next generation in a family.

Several museums of Art ( Istanbul Modern, SCAD) have displayed his work, just as the world's leading art fair Tefaf. All collections are designed by William, just as he is personally involved with all requests for commissioned work from his hands.



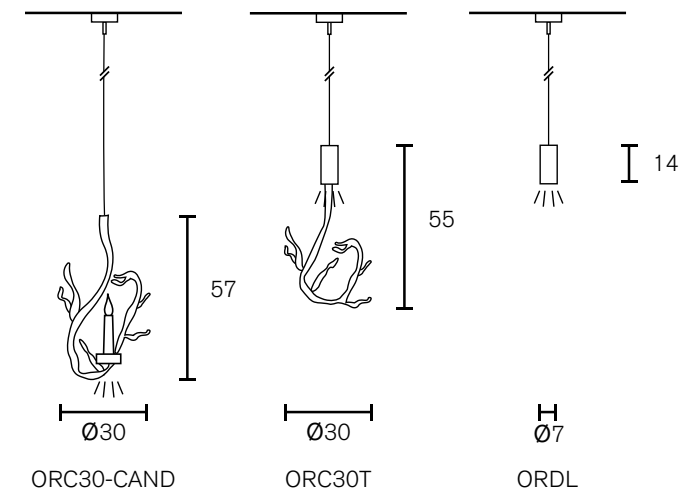


# Technical information

## Collection Orpheus 2020

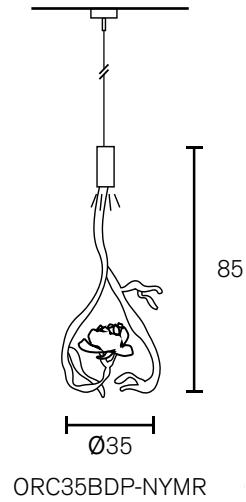
### Element for compositions

Art.nr.	Dimensions	Light bulb	Weight	Finish
OR30-CANDBRA	Ø30xH.57 cm	1x E14	3,0 kg	1x GU10 spot downlight, brass aged finish
ORC35BDP-TWIG	Ø30xH.55 cm	1x GU10	3,0 kg	cast bronze dark patina
SPOR14DL-BDP	Ø7xH.14 cm	1x GU10	1,0 kg	cast bronze dark patina



### Art Element with Nymphenburg Rose

Art.nr.	Dimensions	Light bulb	Weight	Finish
ORC35BDP-NYMR	Ø35xH.85 cm	1x GU10	4,0 kg	cast bronze dark patina with Nymphenburg Rose - LIMITED EDITION

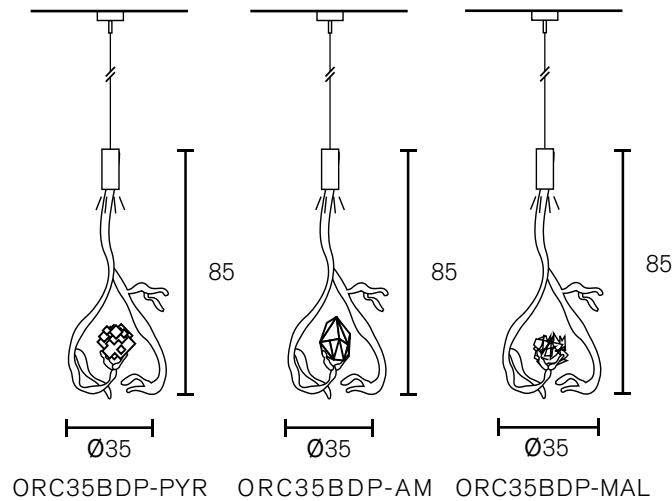


Due to the scarcity of (semi)precious stones and minerals, we need to check availability before an order can be confirmed.  
All (semi)precious stones differ from each other in size and shape.  
All elements and art elements are supplied with 3 meter steel cable, 3 meter electrical cable and a ceiling shade.

# Technical information

## Art Element with Precious Stones

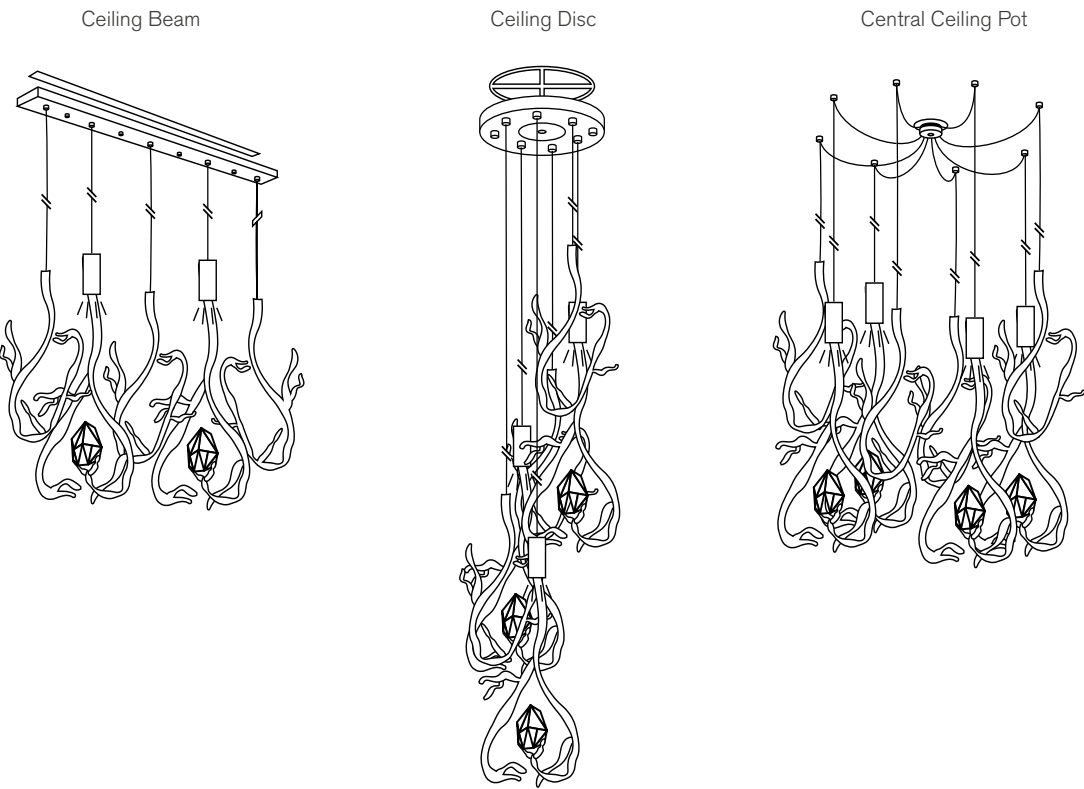
Art.nr.	Dimensions	Light bulb	Weight	Finish and stones
ORC35BDP-PYR	Ø35xH.85 cm	1x GU10	4,0 kg	cast bronze dark patina with pyrite
ORC35BDP-AM	Ø35xH.85 cm	1x GU10	4,0 kg	cast bronze dark patina with amethyst
ORC35BDP-MAL	Ø35xH.85 cm	1x GU10	4,0 kg	cast bronze dark patina with malachite - LIMITED AVAILABLE



### Precious Stones

Art.nr.	Precious Stones on request
SPORC35BDP-MC	Orpheus rock crystal
SPORC35BDP-BAS	Orpheus pyrite on basalt
SPORC35BDP-CAL	Orpheus calcite in the colours green, orange and champagne
SPORC35BDP-LAB	Orpheus labradorite
SPORC35BDP-BTO	Orpheus black tourmaline

## Suspension options





All rights reserved, copyright© Brand van Egmond B.V. ® 2020

For all models, texts, layout and images. Photography by Daniel Nicolas, Mark Groeneveld, BrandvanEgmond or other individuals or entities, Interiors designed by studiodutchdelight.com. Specifications are subject to change without prior notice. Brand van Egmond manufactures exclusive lighting sculptures on a small scale. Because their products are handmade, they can differ from one another. Each product has its own identity and therefore is unique. Each item is labelled with its own number and certificate. Brand van Egmond reserves the right to change their models from time to time without prior notice. The designs, texts, layout or pictures included in this brochure are subject to errors, technical changes and protected by copyright and/or industrial design rights. No part there of may be made public, reproduced or amended in any form or in any manner whatsoever, for commercial purposes by third parties, including dealers, retailers, internet shops and others, without the prior and express written permission of the designer William Brand.



**BRAND VAN EGMOND B.V.** Nikkelstraat 41, 1411 AH Naarden, The Netherlands

T. +31 (0)35 692 12 59 F. +31 (0)35 691 17 25 [info@brandvanegmond.com](mailto:info@brandvanegmond.com) [www.brandvanegmond.com](http://www.brandvanegmond.com)

