



LORENZO CASTILLO

COLECCIÓN
VOLUMEN IV

COLECCIÓN

LA IDEA DE UN CAMPO ILUSTRADO VENÍA A MI CABEZA CUANDO DISEÑÉ LA NUEVA COLECCIÓN. NORMALMENTE ASOCIAMOS TELAS LISAS Y PÁLIDAS PARA EL CAMPO, PERO YO QUERÍA TEXTURAS, COLORES NEUTROS AUNQUE VIBRANTES Y MUY SUTILES GEOMETRÍAS EN TON SUR TON. ASÍ NACEN DISEÑOS COMO LAS LANAS EN BLANCOS ROTOS O AZULES CERÚLEO, ALGODONES CON TRAMAS BORDADAS EN RAYAS O GEOMÉTRICOS Y FALSOS LISOS CON MUCHA TEXTURA.

ESPAÑA ES UN PAIS DE PROFUNDA TRADICIÓN DE CAMPO, CAZA, CABALLOS Y QUERÍA PODER OFRECER UNA COLECCIÓN INSPIRADA EN ESAS MASÍAS, CORTIJOS, QUINTAS Y CASERÍOS DONDE LA DECORACIÓN SE RENUEVA Y MODERNIZA. COMO NO CONCIBO UN CAMPO COMPLETAMENTE LISO, QUISE MEZCLAR CON ESTAMPADOS CUYA INSPIRACIÓN VIENE DE MUY DIVERSAS FUENTES.

FOR MY NEW COLLECTION, I HAD THE IDEA OF A LUXURIANT COUNTRYSIDE IN MY HEAD. WE USUALLY THINK OF PLAIN AND SOFT FABRICS FOR COUNTRY LIVING, BUT I WANTED TEXTURES, NEUTRAL, YET VIBRANT COLORS, AND SUBTLE GEOMETRICS ON 'TON SUR TON'. THE RESULT IS A COLLECTION THAT COMPRISES WOOLS IN CREAM WHITES, CERULEAN BLUES, WOVEN STRIPES OR GEOMETRICS IN COTTON AND TEXTURED SEMI PLAINS.

SPAIN HAS A STRONG COUNTRYSIDE TRADITION, HUNTING, HORSES AND I WANTED TO CREATE A COLLECTION INSPIRED IN THOSE 'QUINTAS', 'CASERÍOS', 'CORTIJOS': SPANISH NAMES FOR DIFFERENT TRADITIONAL COUNTRYSIDE CONSTRUCTIONS WHERE THE INTERIORS ARE RENOVATED AND UPDATED. SINCE I CAN'T THINK OF A 'PLAIN' COUNTRYSIDE, I WANTED TO MIX UP WITH SOME PATTERNS INSPIRED IN DIFFERENT SOURCES.



ASÍ, EL JARRÓN DE PEONÍAS SOBRE UNA PORCELANA DE DELFT
RECUERDA A LA MÁS PURA TRADICIÓN INGLESA DE CAMPIÑA. SIN
EMBARGO, LOS JARRONES DE LACA JAPONESA BORDADOS TIENEN
UN PUNTO MÁS RICO Y SOFISTICADO, PRODUCTO DE LAS INFLUENCIAS
DEL "CHINA TRADE ". TAMBIÉN EL ESTAMPADO SOBRE LINO DE FLORES
AL MODO LUIS XVI CON UNA PALETA DE COLOR MUY CUIDADA, NADA
CONVENCIONAL, EN AMARILLO PÁLIDO, MARSALA, VERDE
HIERBA Y AZUL CERÚLEO. MIS COLECCIONES TIENEN QUE TENER
TERCIOPELOS, ABUNDANCIA DE ELLOS, POR ELLO EL TERCIOPELO
VEGETAL CON INSPIRACIÓN VENECIANA Y TURCA, COMO LOS USADOS
EN EL PALACIO DE LOS DOGOS. Y MÁS URBANO Y MODERNO EL
TERCIOPELO CON DIBUJO DE CUADROS, CON RECUERDOS A LA ALTA
DECORACIÓN DE MEDIADOS DEL SIGLO XX EN AMÉRICA Y FRANCIA.
EN DEFINITIVA, ES UNA COLECCIÓN ATEMPORAL, INTELECTUAL Y
REFINADA, QUE AUNQUE SE HA PENSADO PARA UN CAMPO MUY
SOFISTICADO SE PUEDE MEZCLAR Y CAMBIAR DE ESCENARIO
ADECUÁNDOLO A UN ESPACIO URBANO INTERNACIONAL.

LORENZO CASTILLO

LIKE THE PEONIES ON A DELFT PORCELAIN VASE IN A TRADITIONAL
ENGLISH STYLE PRINTED ON LINEN OR JAPANESE LACK VASES WOVEN
IN JACQUARD, RICH AND SOPHISTICATED, INFLUENCED BY THE CHINA
TRADE. THERE IS ALSO A FLORAL PRINT ON LINEN IN A LOUIS XVI
STYLE WITH AN UNCONVENTIONAL COLOR PALETTE OF CERULEAN
BLUE, GRASS GREEN, PALE YELLOW OR MARSALA. THERE ARE
ALWAYS VELVETS IN MY COLLECTIONS, A WEALTH OF THEM, HENCE THE
PRESENCE OF A VELVET WITH VENETIAN AND TURKISH INSPIRATION
WITH PLANT MOTIFS, LIKE THE ONE USED IN THE DOGE'S PALACE IN
VENICE. ANOTHER VELVET, MORE URBAN AND MODERN, FEATURES
CHECKS REMINISCENT OF HIGH END DECORATION OF THE MIDDLE
OF THE 20 TH CENTURY IN AMERICA AND FRANCE. THIS COLLECTION
IS TIMELESS AND REFINED. EVEN THOUGH IT WAS DESIGNED FOR A
SOPHISTICATED COUNTRYSIDE, IT CAN BE COMBINED FOR USE IN
URBAN INTERIORS WORLDWIDE



















RASCAFRIA



LCT-5459-001



LCT-5459-002



LCT-5459-003



LCT-5459-004

ALMENARA



LCT-5462

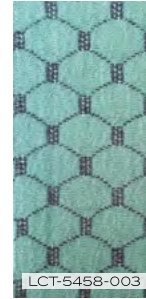
GREDOS



LCT-5458-001



LCT-5458-002



LCT-5458-003



LCT-5458-004

LAS CUMBRES



LCT-5481-001



LCT-5481-002



LCT-5481-003

SAN ILDEFONSO



LCT-5484-001

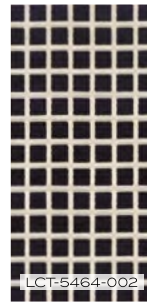


LCT-5484-002

BUITRAGO



LCT-5464-001



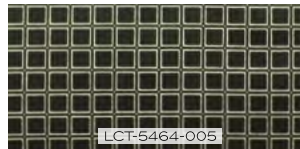
LCT-5464-002



LCT-5464-003



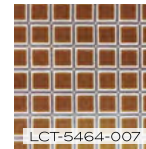
LCT-5464-004



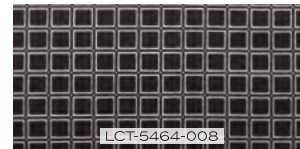
LCT-5464-005



LCT-5464-006



LCT-5464-007



LCT-5464-008

TIÑANA



LCT-5468-001



LCT-5468-002



LCT-5468-003

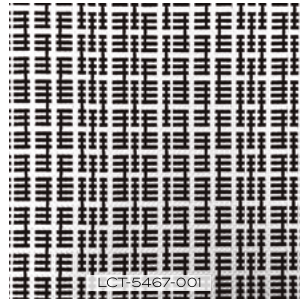


LCT-5468-004

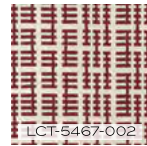


LCT-5468-005

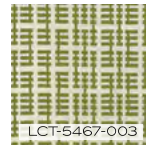
ISIDRO



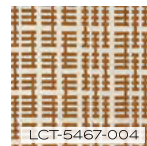
LCT-5467-001



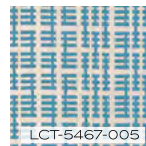
LCT-5467-002



LCT-5467-003



LCT-5467-004



LCT-5467-005

LAS CUMBRES



LCT-5485-001



LCT-5485-002



LCT-5485-003

NAVAFRIA

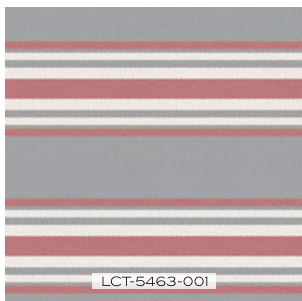


LCT-5481-001

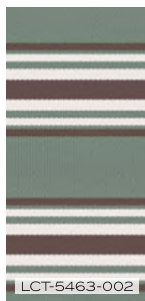


LCT-5461-002

PINILLA



LCT-5463-001



LCT-5463-002



LCT-5463-003



LCT-5463-004

GUADARRAMA



LCT-5456-001



LCT-5456-002

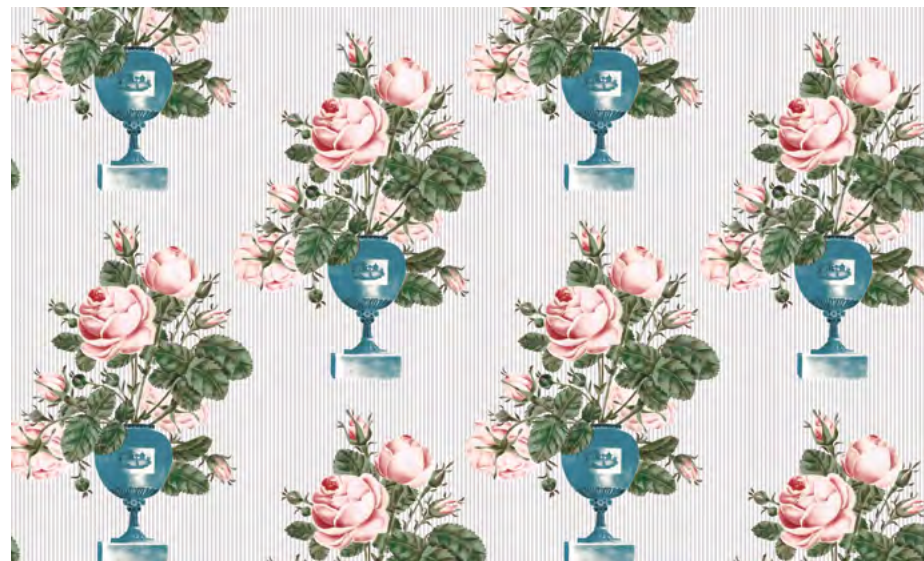


LCT-5456-003



LCT-5456-004

ADELAIDA



LCT-5486

PEÑALARA



LCT-5457-001



LCT-5457-002

LCT-5457-003



LCT-5457-004



LCT-5457-005



LCT-5457-006



LCT-5457-007

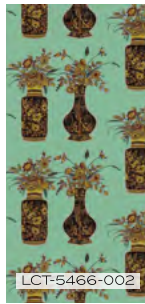


LCT-5457-008

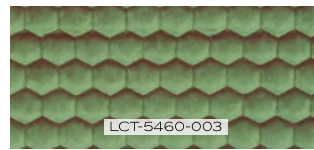
LORENZO



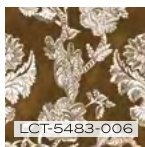
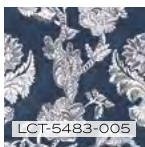
CASILDA



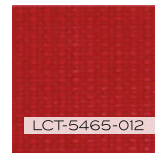
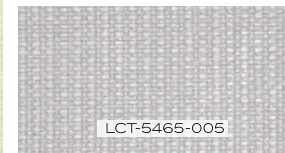
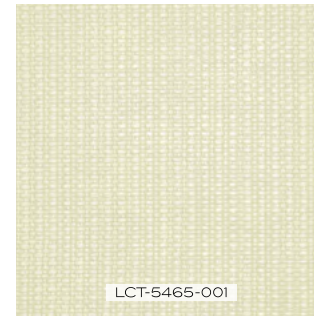
QUERCUS



CHITINA



VALSAIN



VALSAIN

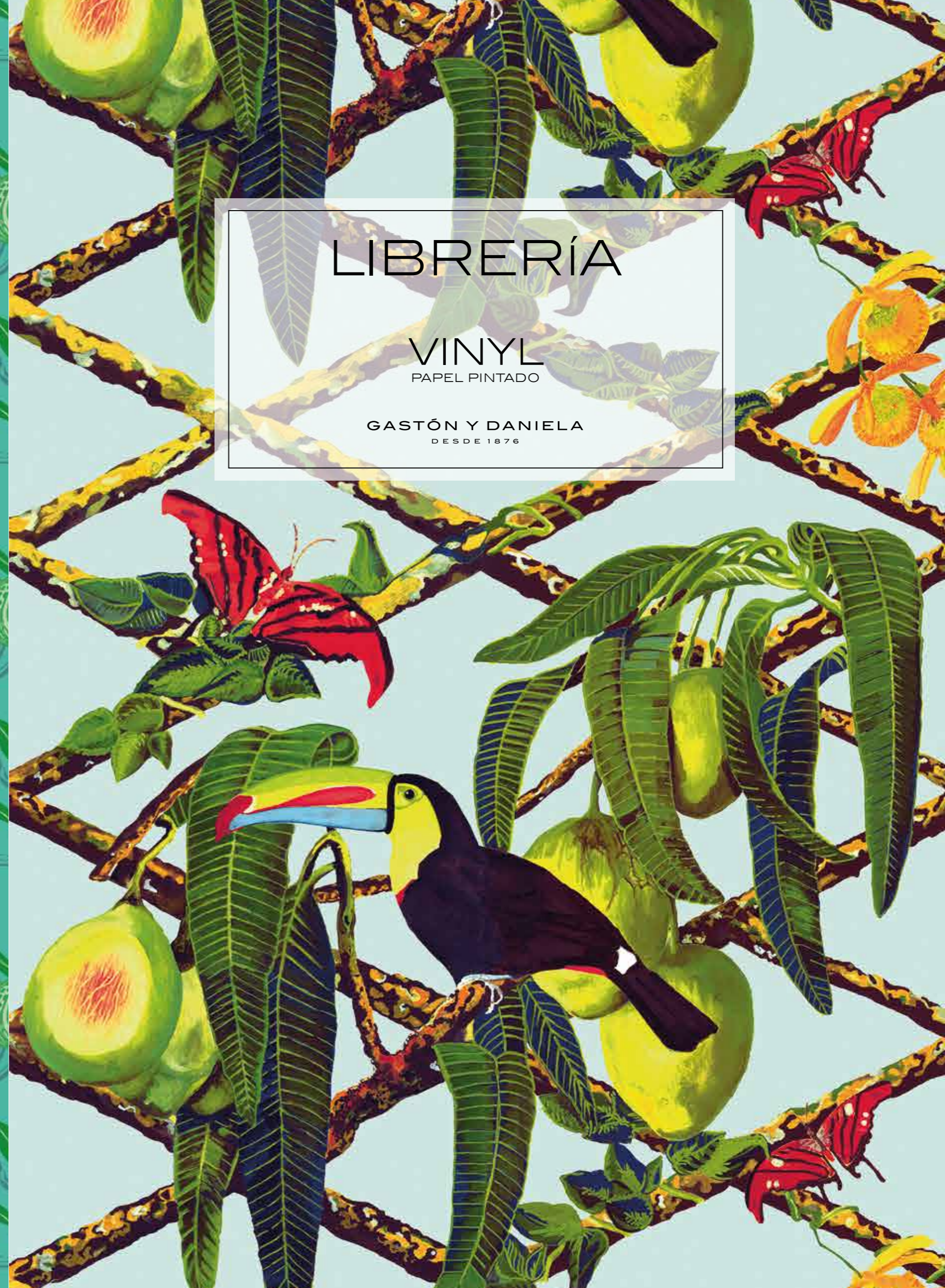


Todos los diseños contenidos en el presente catálogo son propiedad de Gastón y Daniela. Queda prohibida su reproducción o modificación, total o parcial. All designs contained in this catalog are the property of Gaston and Daniela. The total or partial reproduction or modification thereof is strictly prohibited.



GASTÓN Y DANIELA
DESDE 1876

www.gastonydaniela.com



LIBRERÍA

VINYL

PAPEL PINTADO

GASTÓN Y DANIELA
DESDE 1876

VINYL

PAPEL PINTADO



GDW 5447-001



GDW 5450-002



GDW 5451-001



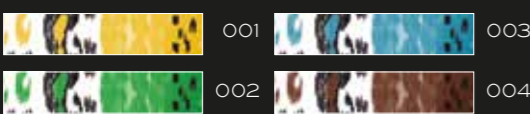
GDW 5453-001



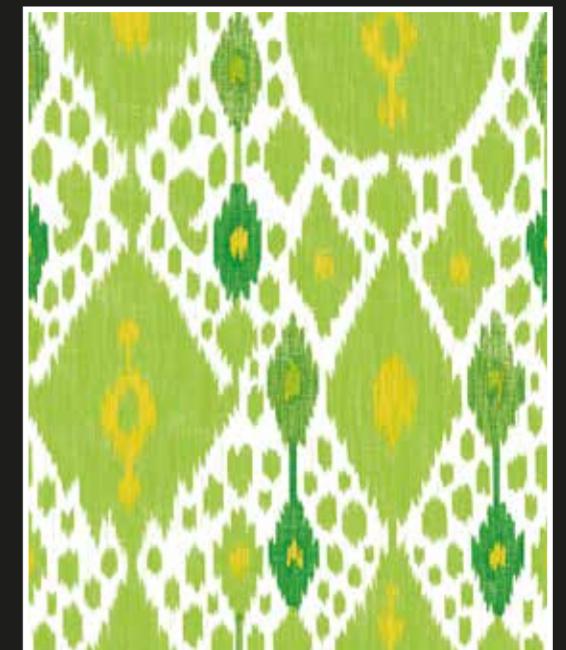
GDW 5448-001



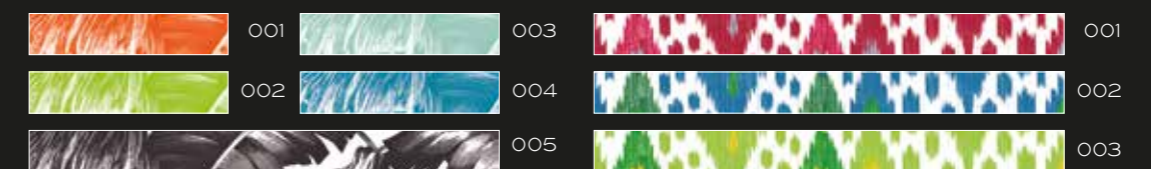
GDW 5452-001



GDW 5449-002



GDW 5446-003





LIBRERÍA

WOVEN NON WOVEN

PAPEL PINTADO

GASTÓN Y DANIELA
DESDE 1876

GDW 5448-001 GRAN SOL AMARILLO

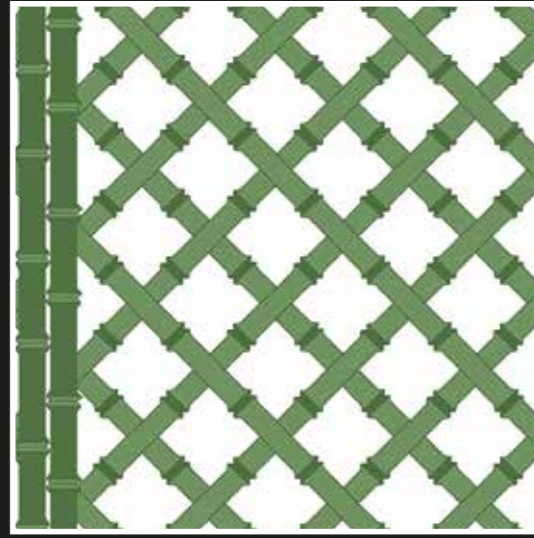
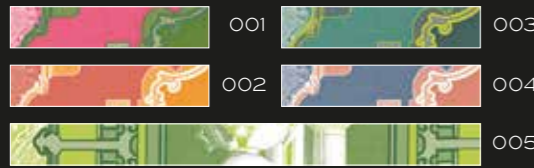
COJINES EN GDT 4939-032 HABANA ORO VIEJO Y GDT 5195-009 VELAZQUEZ NEGRO/TOSTADO
COUSHIONS IN GDT4939-32 HABANA ORO VIEJO AND GDT 5195-009 VELAZQUEZ NEGRO/TOSTADO

WOVEN NON WOVEN

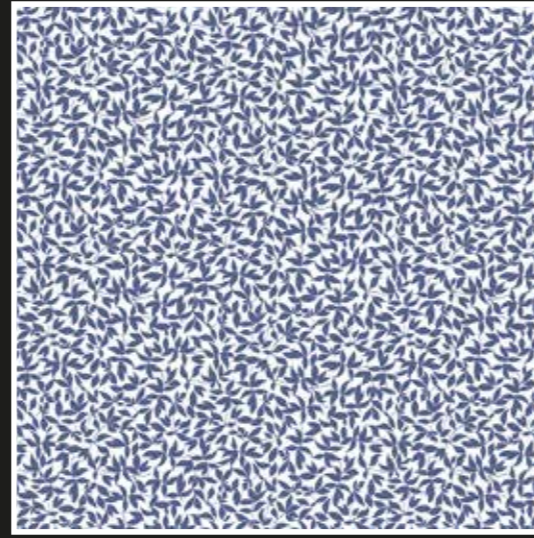
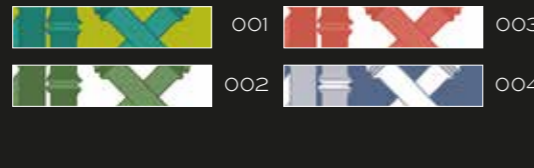
PAPEL PINTADO



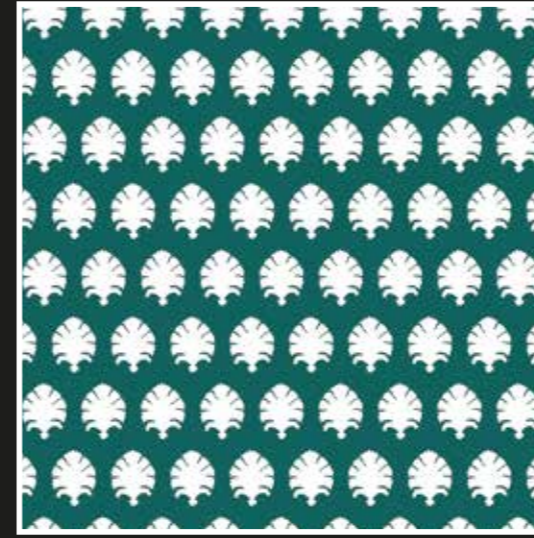
GDW 5445-001



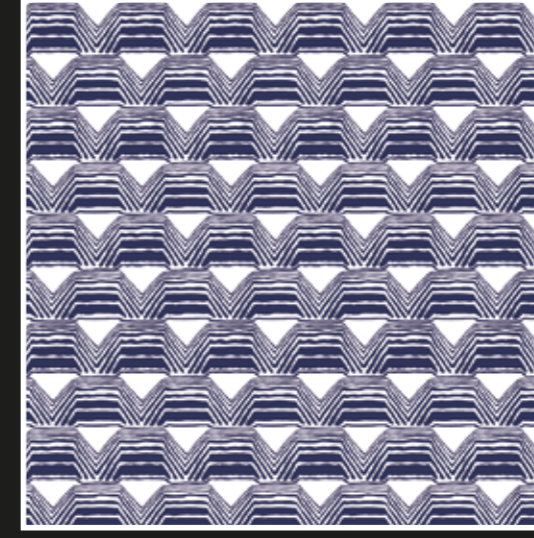
GDW 5455-001



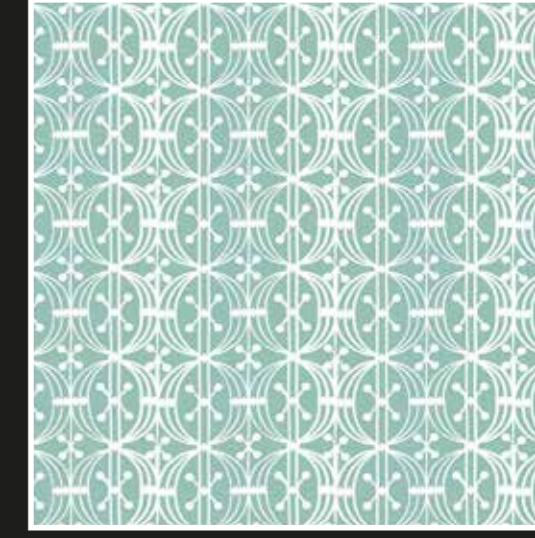
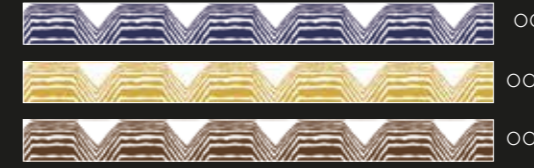
GDW 5444-002



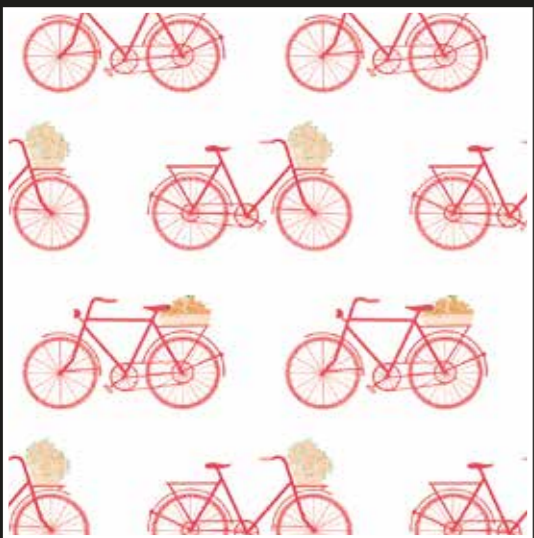
GDW 5440-002



GDW 5442-001



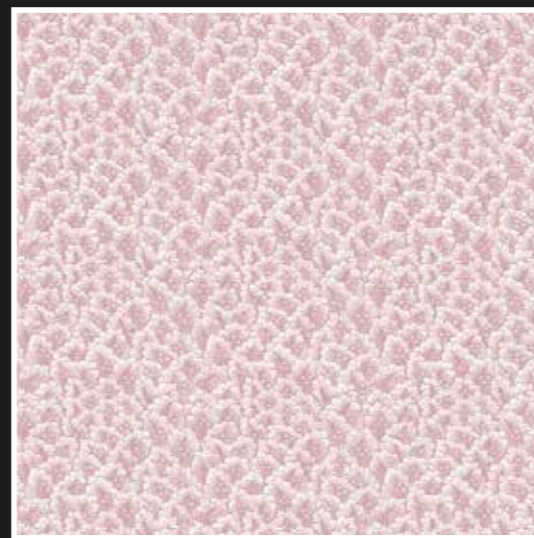
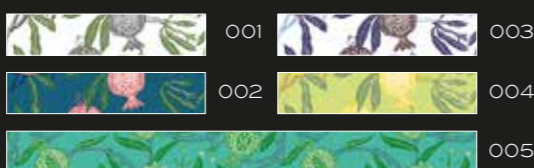
GDW 5438-002



GDW 5435-001



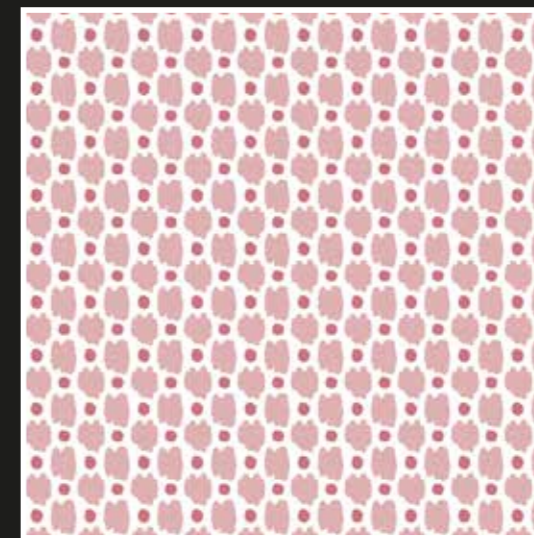
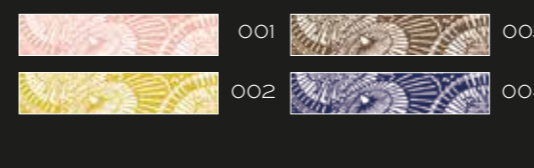
GDW 5439-002



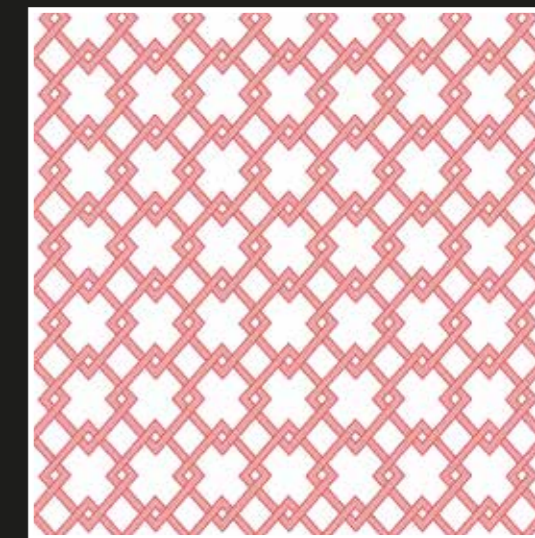
GDW 5437-001



GDW 5436-001



GDW 5443-001



GDW 5441-001





GASTÓN Y DANIELA
DESDE 1876

CARPETS

PRIMERA EDICIÓN



CARPETS AND RUGS
IN 100% PURE WOOL

REF. 5189-003

REF. 5189-001

REF. 5191-001

REF. 5191-002

REF. 5190-001

REF. 5189-002

REF. 5190-003

REF. 5193-002

REF. 5193-003

REF. 5192-002

REF. 5192-001

REF. 5193-001

REF. 5190-002



GASTÓN Y DANIELA
DESDE 1876

www.gastonydaniela.com