



ETRO

Home Interiors







## INTIMATE ESCAPE

Refined charm, contemporary elements and bohemian accents.

ETRO Home Interiors presents a new space with an elegant allure – an intimate and eclectic home where passion for fashion, wanderlust and love for beauty coexist, harmonised by the calming presence of nature in its multifaceted forms.

A secret refuge to escape from metropolitan chaos, where the iconic pieces of the collection, dressed in neutral and refined shades, celebrate ETRO's nomadic spirit in a softly sophisticated version.







Exotic accents from ethnic inspiration give life to a mix of atmospheres that recall faraway lands, confirming the nomadic spirit that is part of ETRO's DNA. Like in the Ceylon armchair, whose structure is curved outwards reminding the colonial furnishings, while the new Selva fabric features a naturalistic print with intricate fragments of Oriental jungles.













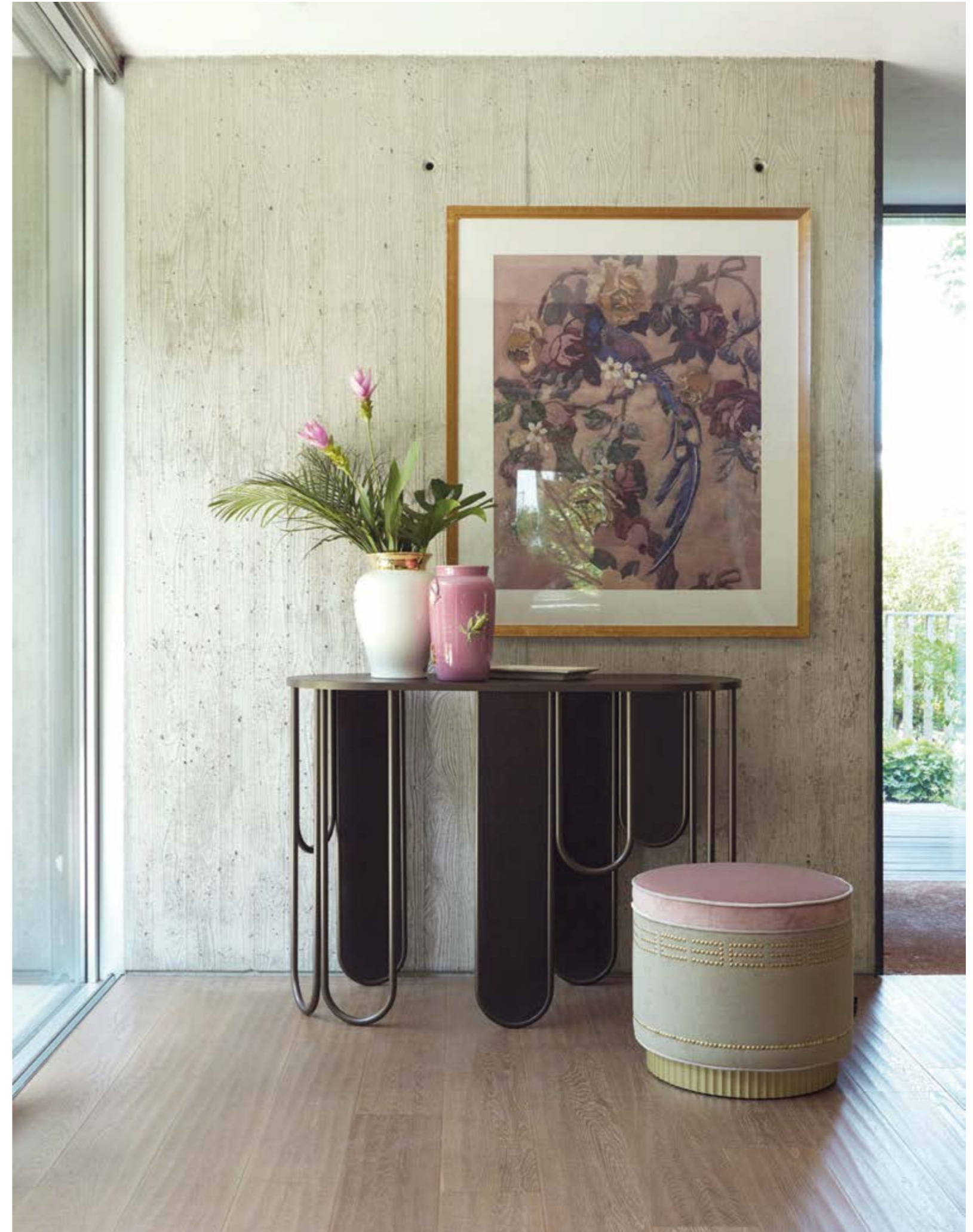


Vibrations of lights and Zen spirit.  
A medley of suggestions imbued in  
a sophisticated charm, generated  
by the calibrated mingling of the  
soft shades of the fabrics and  
the dark-coloured wood of the  
Ottoman-inspired Shah armchair  
and of the bold and distinctive  
Palmira bookcase.





Gentle harmony and refined elegance.  
A subtle balance between the delicate  
fragility of flowers and the materic  
strength of wood and metal, united by  
a common element: beauty.  
A fascinating proposal in which  
the rounded shapes of the Chandra  
console, together with the natural  
elements and the painting, create a  
composition with an artistic vibe.



















White, beige, champagne:  
a neutral base with touches  
of pastel colours. A chromatic  
palette lending a delicate  
charm to the furnishings  
of the Intimate Collection,  
featuring iconic fabrics and  
natural materials, combined  
with evocative patterns and  
symbolic themes such as the  
Pegasus and the Paisley.













The sweet welcome home upon returning from a trip. Madras armchair salutes you and your best friend in its enveloping embrace. An elegant armchair upholstered with an iconic fabric in a delicate neutral colour, emphasised by the decorative leather belt that underlines the harmony of the shapes.







The warmth of wood, the luster of metal, the harmony of natural materials and the power of symbols. A medley that translates ETRO's imaginative expressiveness and its typical narrative patterns into a new language of lightness and fluidity.













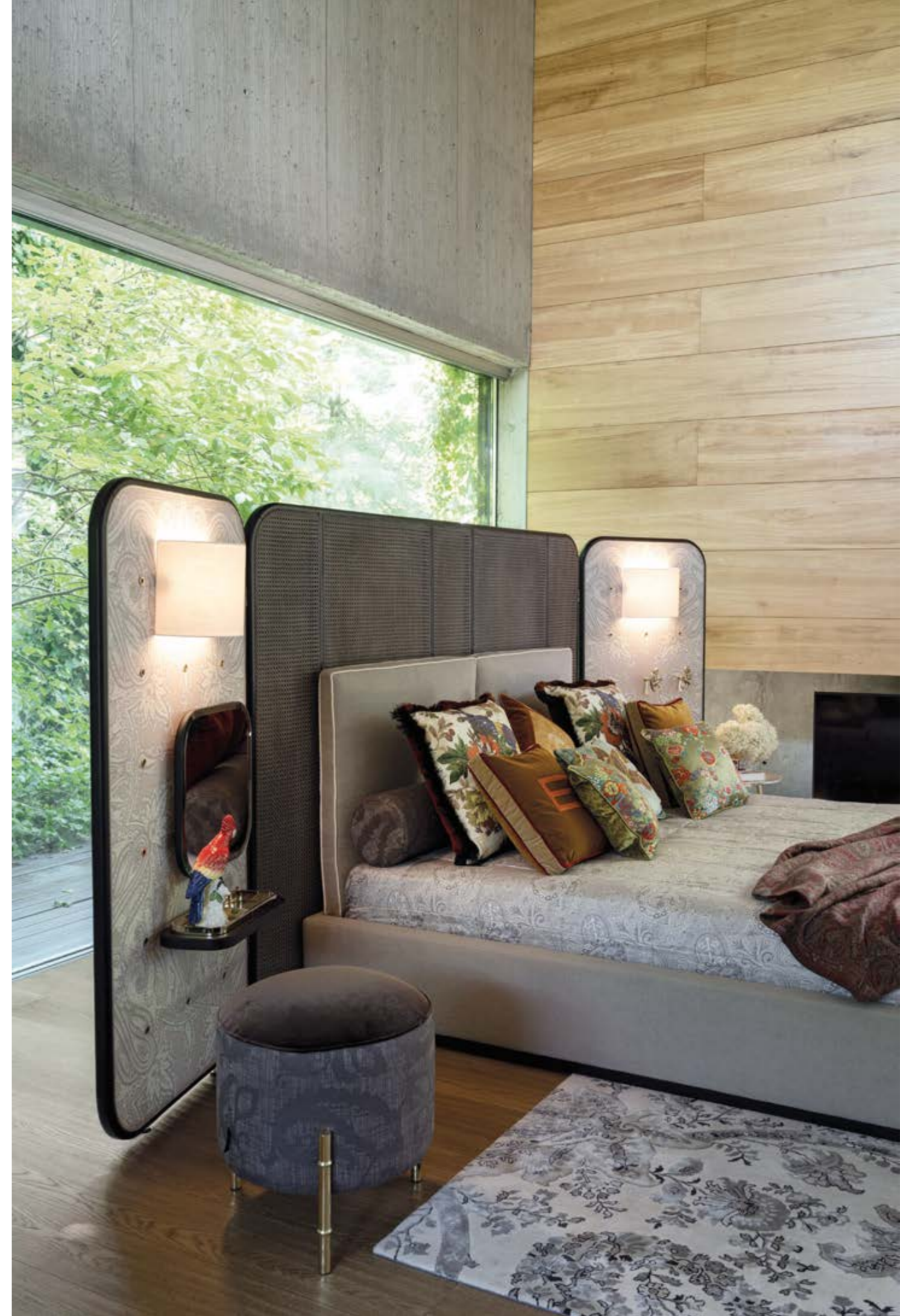
Between travel memories and inspirations for future escapes, a place where you can enjoy the intensity of the present moment. Symbolic elements associated with travel experiences – like decorative objects, meaningful details and iconic patterns – reconnect us with the deepest identity of the brand.















Between ephemeral and eternal, the immense potential of beauty in its most inclusive form. The elusive grace of a flower is reflected in the mirror of the Kolkata dressing table, while the Tingad screen artistically protects this corner dedicated to contemplation.

















An elegant setting that embodies ETRO's typical eclecticism. A narrative that combines the refined and precious appeal of the materials – the patinated bronze finishing and the Carbalho essence of the Rajan cabinet – with bohemian, travel-inspired aesthetics such as the symbolic Paisley pattern enriching the Picabia chair and the Varanasi rug.







Luxurious details, exotic vibrations and accents of distant lands. The sober and elegant shapes of the Klee dining table, with its “E” shaped base referring to the initial letter of the ETRO logo, are completed by the evocative appeal of the Dinka chair, with polished brass rings reminding the African jewels.





A space and a time devoted to your passions. A corner to be lived, wrapped in the comfortable embrace of the Kush armchair. A piece of furniture with soft shapes emphasised by the tone-on-tone Paisley print and by golden-coloured metal studs.

















The passion for nature that has always distinguished ETRO brand is expressed in its most free and authentic form in the Veranda Collection, in which the Menfi chaise longue stands out as an iconic piece. Its sinuous lines give the seat a dynamic and welcoming aspect, emphasised by the association of the seat fabric in a delicate green tone and the headrest one in a print that recalls the tropical forest.







Natural woods, rattan and exotic prints create a true natural refuge. The story of a journey that takes us far away - pure wanderlust - from the lands of Paisley to the Oriental nature, suggested by the bamboo shaped elements, until the tropical forest that explodes with all its vital energy in the new Selva pattern fabric.















A secret haven. A hidden place where to reconcile with yourself. Caral armchair welcomes you with its soft and enveloping lines and with its exotic appearance. The upholstery in jacquard fabric Bukhara with Suzani pattern creates a harmonious contrast with the lightness and naturalness of the fan-shaped caned backrest.







**FEATURED PRODUCTS**



## CEYLON (page 4-5, 8)



**E.CEY.211.AAV**  
3-seater sofa  
L 280 D 98 H 73 cm  
L 110 15/64 D 38 37/64 H 28 47/64 in

Structure in multilayer wood, curved for backrest and armrests, and variable thickness high density polyurethane foam.  
Upholstery of the backrest and armrests in printed fabric cat. A Selva col. 1 Champagne.  
Piping in nubuck leather cat. A Nuuk col. 6 Frost.  
Upholstery of the seat base in nubuck leather cat. A Nuuk col. 6 Frost. Frame in solid beech wood dyed matt Dark Wengé, with feet worked with a numeric control system.  
Elastic straps that guarantee springiness integrated in the structure.  
Seat and back cushions in variable thickness high density polyurethane foam.  
Upholstery with piping in nubuck leather cat. A Nuuk col. 6 Frost.  
3 decorative lower-back cushions in goose down included. Upholstery with piping in printed fabric cat. A Selva col. 1 Champagne.

## HAMAR (page 66-67)



**E.HAM.211.ADX**  
Loveseat  
L 185 D 82 H 76 cm  
L 72 53/64 D 32 9/32 H 29 59/64 in

Structure in solid beech wood dyed matt Dark Wengé, turned and worked with a numeric control system. Decorative rings fixed on armrests, composed of two interlocking pieces in polished cast brass.  
Backrest in wicker caning dyed Brushed Dark Wengé, attached to the structure. Closure piping in wicker in same colour as caning.  
Seat in multilayer wood and variable thickness high density polyurethane foam.  
Upholstery in outdoor fabric cat. A Selva Alfresco col. 1 Tropical.  
Back cushion in variable thickness high density polyurethane foam. Upholstery in outdoor fabric cat. A Selva Alfresco col. 1 Tropical.

## MADRAS (page 24-27)



**E.MAD.211.ADX**  
3-seater sofa  
L 280 D 111 H 80 cm  
L 110 15/64 D 43 45/64 H 31 1/2 in

Structure in multilayer wood and variable thickness high density polyurethane foam.  
Upholstery in velvet cat. A Flag col. 6 Cream.  
Elastic straps that guarantee springiness integrated in the structure.  
Seat cushions in variable thickness high density polyurethane foam. Upholstery in velvet cat. A Flag col. 6 Cream. Back cushions in goose down. Upholstery in velvet cat. A Flag col. 6 Cream. Optional decorative cushions.  
Belt on external side of armrests in leather cat. A Cuir col. 2 Chestnut, with decorative stitching and Pegasus buckle in brass, passing through the feet and blocked at the end with a cylinder in polished brass.  
Feet in polished brass.

## WOODSTOCK (page 32-35)



**E.WOO.211.ADX**  
4-seater sofa  
L 290 D 112 H 85 cm  
L 114 11/64 D 44 3/32 H 33 15/32 in

Base in solid beech wood dyed matt Dark Wengé, turned and worked with a numeric control system. Tips in polished brass.  
Under-seat frame in iron with elastic straps that guarantee springiness.  
Seat in variable thickness high density polyurethane foam, quilted with surface buttons.  
Upholstery in printed fabric cat. A Mountain col. 3 Base Beige. Mattress style piping in velvet cat. A Venezia col. 17 Moka.  
Roll cushions in variable thickness high density polyurethane foam, with internal structure in iron attached to the under-seat frame with a screw and bolt system.  
Upholstery in printed fabric cat. A Mountain Roll col. 3 Base Beige. Piping and edge with button in velvet cat. A Venezia col. 17 Moka. Double frill decorative tassels in silk, in colours matching with upholstery fabric.  
Back in multilayer wood and variable thickness high density polyurethane foam, attached to the base on the under-seat frame. Upholstery with piping in velvet cat. A Venezia col. 18 Smoke.  
Back cushions in goose down. Upholstery in printed fabric cat. A Mountain col. 3 Base Beige. Piping and edge in velvet cat. A Venezia col. 17 Moka.  
4 decorative cushions in goose down included. Upholstery in printed fabric cat. A Mountain Roll col. 3 Base Beige. Piping in velvet cat. A Venezia col. 17 Moka.

## WOODSTOCK (page 40, 45)



**E.WOO.225.BDX**  
Daybed  
L 185 D 82 H 58 cm  
L 72 53/64 D 32 9/32 H 22 13/16 in

Base in solid beech wood dyed semi-glossy Dark Wengé, turned and worked with a numeric control system. Tips in polished brass.  
Under-seat frame in iron with elastic straps that guarantee springiness.  
Seat in variable thickness high density polyurethane foam, quilted with surface buttons.  
Upholstery in velvet cat. A Venezia col. 18 Smoke. Mattress style piping in velvet cat. A Venezia col. 17 Moka.  
Roll cushion in variable thickness high density polyurethane foam, with internal structure in iron attached to the under-seat frame with a screw and bolt system.  
Upholstery in velvet cat. A Venezia col. 17 Moka. Contrasting piping in velvet cat. A Venezia col. 18 Smoke. Double frill decorative tassels in silk, in colours matching with upholstery fabric.

## CARAL (page 40, 70-71)



**E.CAR.221.ADX**  
Armchair  
L 83 D 83 H 75 cm  
L 32 43/64 D 32 43/64 H 29 17/32 in

Base in curved multilayer wood with Brushed Dark Bronze finishing.  
Seat in multilayer wood and variable thickness high density polyurethane foam.  
Upholstery in jacquard fabric cat. A Bukhara col. 2 Smoke. Contrasting piping in velvet cat. A Venezia col. 17 Moka.  
Backrest in Brushed Smoke Grey Dyed Vienna straw, fixed to a frame in solid beech wood dyed matt Dark Wengé, turned and worked with a numeric control system. Closure piping in wicker in same colour as Vienna straw.  
1 decorative cushion in goose down included. Upholstery with piping in velvet cat. A Venezia col. 17 Moka.

## CEYLON (page 6-7)



**E.CEY.221.AAV**  
Armchair  
L 97 D 94 H 73 cm  
L 38 3/16 D 37 1/64 H 28 47/64 in

Structure in multilayer wood, curved for backrest and armrests, and variable thickness high density polyurethane foam. Upholstery of the backrest and armrests with piping in nubuck leather cat. A Nuuk col. 6 Frost.  
Frame in solid beech wood dyed matt Dark Wengé, with feet worked with a numeric control system. Elastic straps that guarantee springiness integrated in the structure.  
Seat and back cushion in variable thickness high density polyurethane foam. Upholstery with piping in printed fabric cat. A Selva col. 1 Champagne.  
1 decorative lower-back cushion in goose down included. Upholstery with piping in nubuck leather cat. A Nuuk col. 6 Frost.

## DIANA (page 18, 22-23)



**E.DIA.228.ADX**  
Armchair  
L 80 D 80 H 70 cm  
L 31 1/2 D 31 1/2 H 27 9/16 in

Structure in solid beech wood dyed matt Dark Wengé, turned and worked with a numeric control system.  
Seat in multilayer wood and variable thickness high density polyurethane foam.  
Upholstery in jacquard fabric cat. A Zulu col. 4 Tea. Piping in cat. A Genova velvet col. 2 Sage.  
Backrest in curved multilayer wood and variable thickness high density polyurethane foam. Upholstery in jacquard fabric cat. A Zulu col. 4 Tea. Piping in cat. A Genova velvet col. 2 Sage.

## HAMAR (page 67, 69)



**E.HAM.221.ADX**  
Armchair  
L 81 D 82 H 76 cm  
L 31 57/64 D 32 9/32 H 29 59/64 in

Structure in solid beech wood dyed matt Dark Wengé, turned and worked with a numeric control system. Decorative pieces in polished cast brass.  
Backrest in wicker caning dyed Brushed Dark Wengé, attached to the structure. Closure piping in wicker in same colour as caning.  
Seat in multilayer wood and variable thickness high density polyurethane foam.  
Upholstery in outdoor fabric cat. A Trika Alfresco col. 1 Sand.  
Back cushion in variable thickness high density polyurethane foam. Upholstery in outdoor fabric cat. A Trika Alfresco col. 1 Sand.

## HAMAR (page 69)



**E.HAM.222.ADX**  
Foot rest  
L 81 D 80 H 40 cm  
L 31 57/64 D 31 1/2 H 15 3/4 in

Structure in solid beech wood dyed matt Dark Wengé, turned and worked with a numeric control system.  
Seat in multilayer wood and variable thickness high density polyurethane foam.  
Upholstery in outdoor fabric cat. A Trika Alfresco col. 1 Sand.

## KUSH (page 54-55)



**E.KUS.221.ABX**  
Armchair  
L 92 D 100 H 110 cm  
L 36 7/32 D 39 3/8 H 43 5/16 in

Structure in multilayer wood and high density polyurethane foam. Upholstery in printed nubuck leather cat. B Shell col. 1 Dust. Border decorated with golden nails.  
Base with crossed legs in solid beech wood dyed matt Dark Wengé.  
Feet and details in polished brass.



## MADRAS (page 24, 28-29)



**E.MAD.221.AEX**  
Armchair  
L 100 D 95 H 80 cm  
L 39 3/8 D 37 13/32 H 31 1/2 in

Structure in multilayer wood and variable thickness high density polyurethane foam. Upholstery in printed fabric cat. B Leroy col. 2 Greige. Under-seat frame internally attached to the structure with elastic straps that guarantee springiness. Seat cushion in variable thickness high density polyurethane foam. Upholstery in printed fabric cat. B Leroy col. 2 Greige. Back cushion in goose down. Upholstery in printed fabric cat. B Leroy col. 2 Greige. Belt on external side of armrests in leather cat. A Cuir col. 2 Chestnut, with decorative stitching and Pegasus buckle in brass, passing through the feet and blocked at the end with a cylinder in polished brass. Feet in polished brass.

## MASAI (page 33/35)



**E.MAA.221.AEX**  
Armchair  
L 77 D 89 H 82 cm  
L 30 5/16 D 35 3/64 H 32 9/32 in

Structure in solid beech wood dyed matt Dark Wengé, turned and worked with a numeric control system. Decorative rings fixed on armrests, composed of two interlocking pieces in polished cast brass. Feet in polished brass. Seat and backrest in curved multilayer wood and variable thickness high density polyurethane foam. Upholstery in jacquard fabric cat. B Greyton col. 3 Brown. Lateral bands and piping in velvet cat. A Venezia col. 17 Moka.

## MENFI (page 62-64)



**E.MEN.224.ADG**  
Chaise longue  
L 176 D 66 H 72 cm  
L 69 19/64 D 25 63/64 H 28 11/32 in

Structure in solid beech wood dyed matt Dark Wengé. Feet turned and worked with a numeric control system to achieve the shape of a bamboo cane. Seat with circular section slatted system. Removable mattress in polyurethane foam, attached to the structure with velcro straps. Upholstery with piping in outdoor fabric cat. A Trika Alfresco col. 2 Tea. Headrest cushion in goose down. Upholstery with piping in outdoor fabric cat. A Selva Alfresco col. 1 Tropical. Counterbalance in polished brass.

## SHAH (page 4/13)



**E.SHH.228.ADX**  
Armchair  
L 67 D 64 H 66 cm  
L 26 3/8 D 25 13/64 H 25 63/64 in

Structure in solid beech wood dyed matt Dark Wengé, turned and worked with a numeric control system. Decorative Pegasus in laser-cut brass foil, fixed to the back of the backrest. Seat in multilayer wood and variable thickness high density polyurethane foam. Upholstery with piping in velvet cat. A Venezia col. 21 Teal. Decorative tassels in silk in colours matching upholstery fabric. Backrest in curved multilayer wood dyed matt Dark Wengé and variable thickness high density polyurethane foam. Upholstery in velvet cat. A Venezia col. 21 Teal.

## TEBE (page 60-61)



**E.TEB.221.ADJ**  
Armchair  
L 68 D 73 H 83 cm  
L 26 49/64 D 28 47/64 H 32 43/64 in

Structure in brass with Brushed Dark Bronze finishing, shaped like bamboo canes through handcrafted hot working metal process. Seat in multilayer wood and variable thickness high density polyurethane foam. Upholstery in outdoor fabric cat. A Selva Alfresco col. 1 Tropical. 1 decorative back cushion in goose down included. Upholstery in outdoor fabric cat. A Selva Alfresco col. 1 Tropical.

## ALEPPO (page 7)



**E.ALE.232.ADH**  
Side table  
Ø 50 H 55 cm  
Ø 19 11/16 H 21 21/32 in

Structure in curved multilayer wood lacquered Patinated Gold Liquid Metal. Two swivel compartments, with inner cover in velvet cat. A Genova col. 2 Sage (1° drawer) and Genova col. 3 Lotus (2° drawer). Base in multilayer wood lacquered Brushed Dark Bronze.

## AMBAR (page 24/26)



**E.AMB.232.DGJ**  
Side table  
Ø 60 H 50 cm  
Ø 23 5/8 H 19 11/16 in

Structure in polished brass. Top and base in multilayer wood veneered in matt Dark Wengé Dyed Carbalho.

## AMBAR (page 55, 57)



**E.AMB.231.AXX**  
Side table  
Ø 40 H 40 cm  
Ø 15 3/4 H 15 3/4 in



**E.AMB.231.BLX**  
Side table  
Ø 40 H 50 cm  
Ø 15 3/4 H 19 11/16 in



**E.AMB.231.CXX**  
Side table  
Ø 40 H 60 cm  
Ø 15 3/4 H 23 5/8 in

Structure in polished brass. Top and base in Violet Onyx, marble cat. B Irish Green and Cloudy Grey Onyx.

## CHANDRA (page 5, 18)



**E.CHN.232.ADI**  
Side table  
Ø 70 H 46 cm  
Ø 27 9/16 H 18 7/64 in



**E.CHN.231.ADI**  
Central table  
Ø 135 H 46 cm  
Ø 53 5/32 H 18 7/64 in

Structure in iron tubes with Dark Bronze finishing. Top support in iron with Dark Bronze finishing. Top in multilayer wood covered in jacquard fabric cat. A Zulu col. 4 Tea and finished with a sheet of extra clear glass. Side panels in multilayer wood covered in velvet cat. A Genova col. 1 Rice, col. 2 Sage and col. 3 Lotus.

## SAMARCANDA (page 32, 36, 40, 70-71)



**E.SAM.232.BXX**  
Side table  
Ø 50 H 50 cm  
Ø 19 11/16 H 19 11/16 in



**E.SAM.232.AXX**  
Side table  
Ø 75 H 40 cm  
Ø 29 17/32 H 15 3/4 in

Base in polished brass, with legs shaped like bamboo canes through handcrafted hot working metal process. Top in Cloudy Grey Onyx.

## SAMARCANDA (page 32, 36)



**E.SAM.231.AGX**  
Central table  
L 125 D 100 H 30 cm  
L 49 7/32 D 39 3/8 H 11 13/16 in

Base in polished brass, with legs shaped like bamboo canes through handcrafted hot working metal process. Top in multilayer wood veneered in matt Dark Wengé Dyed Carbalho.

## TAXILA (page 33, 35)



**E.TAX.232.AJX**  
Side table  
L 70 D 70 H 46 cm  
L 27 9/16 D 27 9/16 H 18 7/64 in

Vertical structure in aluminium with Brushed Dark Bronze finishing. Decorative vertical elements in polished brass, shaped like bamboo canes through handcrafted hot working metal process. Top and base in multilayer wood lacquered Patinated Gold Liquid Metal.



## VESSEL (page 66-69)



**E.VES.232.AEJ**  
Side table  
Ø 63 H 52 cm  
Ø 24 51/64 H 20 15/32 in



**E.VES.231.AEJ**  
Central table  
Ø 123 H 39 cm  
Ø 48 27/64 H 15 23/64 in

Base in polished brass.  
Top in multilayer wood covered in coated fabric cat. B Arnica col. 19 Cuoio. Raised border covered in leather cat. A Cuir col. 2 Chestnut with decorative stitching.

## KLEE (page 49)



**E.KLE.123.AGZ + E.COM.911.AGX**  
Dining table  
Ø 180 H 75 cm  
Ø 77 55/64 H 29 17/32 in

Base in aluminium with Brushed Dark Bronze finishing. Detail lacquered Cherry Red.  
Top in multilayer wood veneered in matt Dark Wengé Dyed Carbalho. Lower part of the top in multilayer wood dyed matt Dark Wengé.  
Lazy Susan (Ø 88 cm) in multilayer wood veneered in matt Dark Wengé Dyed Carbalho.

## TIRTHA (page 52-53)



**E.TIR.122.AGX**  
Dining table  
L 400 D 130 H 74 cm  
L 157 31/64 D 51 3/16 H 29 9/64 in

Base in multilayer wood and MDF veneered in matt Dark Wengé Dyed Carbalho.  
Central detail lacquered Brushed Dark Bronze.  
Top in multilayer wood veneered in matt Dark Wengé Dyed Carbalho with radial inlay.  
Central detail lacquered Brushed Dark Bronze.

## DINKA (page 52-53)



**E.DIN.131.AAG**  
Chair  
L 46 D 56 H 83 cm  
L 18 7/34 D 22 3/64 H 32 43/64 in



**E.DIN.132.AAG**  
Chair with arms  
L 56 D 66 H 83 cm  
L 22 3/64 D 25 63/64 H 32 43/64 in

Structure in solid beech wood dyed matt Dark Wengé, turned and worked with a numeric control system.  
Decorative rings fixed to the feet and on the armrests, composed of two interlocking pieces in polished cast brass.  
Seat in curved multilayer wood and thin polyurethane foam. Upholstery in leather cat. A Cuir col. 3 Milk, with decorative stitching and back eyelets lace-up.

## HAMAR (page 47)



**E.HAM.131.ADX**  
Chair  
L 57 D 61 H 81 cm  
L 22 7/64 D 24 1/64 H 31 3/16 in

Structure in solid beech wood dyed matt Dark Wengé, turned and worked with a numeric control system. Decorative rings fixed on armrests, composed of two interlocking pieces in polished cast brass.  
Backrest in Vienna straw dyed Brushed Smoke Grey, attached to the structure. Closure piping in wicker, in same colour as Vienna straw.  
Seat in multilayer wood and variable thickness high density polyurethane foam.  
Upholstery in velvet cat. A Flag col. 3 Taupe.  
Back cushion in variable thickness high density polyurethane foam. Upholstery in velvet cat. A Flag col. 3 Taupe.

## PICABIA (page 48-49, 51)



**E.PIC.132.ADX**  
Chair  
L 53 D 56 H 80 cm  
L 20 55/64 D 22 3/64 H 31 1/2 in

Structure in curved multilayer wood and variable thickness high density polyurethane foam. Upholstery of the seat and of the lower part of the backrest in velvet cat. A Venezia col. 17 Moka, piping included. Upholstery of the backrest and of the back cuff in jacquard fabric cat. A Zulu col. 3 Sand. “E” decorative element in polished cast brass, fixed to the back of the backrest.  
Legs in solid wood dyed semi-glossy Dark Wengé.

## CEYLON (page 18-19)



**E.CEY.312.ADV**  
Bed for mattress 180 x 200 cm / 70 55/64 x 78 47/64 in  
L 212 D 224 H 115 cm  
L 83 15/32 D 88 3/16 H 45 9/32 in

Headboard in curved multilayer wood and variable thickness high density polyurethane foam. Upholstery in printed fabric cat. A Selva col. 1 Champagne. Piping in nubuck leather cat. A Nuuk col. 6 Frost. Frame in solid beech wood dyed matt Dark Wengé.  
Roll cushions in variable thickness high density polyurethane foam. Upholstery in printed fabric cat. A Selva col. 1 Champagne.  
Optional quilted lightweight bedcover (200 g/m<sup>2</sup>) in polyester fibre filling. Upholstery in printed fabric cat. A Selva col. 1 Champagne. Optional decorative cushions.  
Bed frame in multilayer wood and variable thickness high density polyurethane foam.  
Upholstery with piping in nubuck leather cat. A Nuuk col. 6 Frost.  
Base in solid beech wood dyed matt Dark Wengé.  
Feet worked with a numeric control system.  
Slatted base included for mattress 180 x 200 cm.

## CEYLON (page 19)



**E.CEY.222.BAV**  
Bench  
L 138 D 45 H 42 cm  
L 54 21/64 D 17 23/32 H 16 17/32 in

Base in solid beech wood dyed matt Dark Wengé. Feet turned and worked with a numeric control system.  
Under-seat frame in multilayer wood with elastic straps that guarantee springiness.  
Upholstery with piping in nubuck leather cat. A Nuuk col. 6 Frost.  
Seat cushion in variable thickness high density polyurethane foam. Upholstery with piping in jacquard fabric cat. A Zulu col. 4 Tea.

## TIMGAD (page 40-41)



**E.TIM.312.ADX**  
Bed for mattress 180 x 200 cm / 70 55/64 x 78 47/64 in  
L 405 D 226 H 160 cm  
L 159 29/64 D 88 31/32 H 62 63/64 in

Headboard in Vienna straw dyed Brushed Smoke Grey. Frame in solid beech wood dyed matt Dark Wengé, turned and worked with a numeric control system. Closure piping in wicker in same colour as Vienna straw. Back of headboard with panel in multilayer wood covered in linen cat. A Noli col. 3 Greige.  
Headboard cushions in variable thickness high density polyurethane foam, attached to the headboard with a clip system. Upholstery in linen cat. A Noli col. 3 Greige. Piping in linen cat. A Noli col. 4 Ivory.  
Roll cushions in variable thickness high density polyurethane foam. Upholstery with piping in jacquard fabric cat. A Deccan col. 2 Champagne.  
Optional quilted lightweight bedcover (200 g/m<sup>2</sup>) in polyester fibre filling. Upholstery in jacquard fabric cat. A Deccan col. 2 Champagne. Optional decorative cushions.  
Bed frame in multilayer wood and variable thickness high density polyurethane foam.  
Upholstery in linen cat. A Noli col. 3 Greige.  
Base in multilayer wood dyed matt Dark Wengé.  
Side panels in printed fabric cat. B Leroy col. 2 Greige. Frame in solid beech wood dyed matt Dark Wengé, turned and worked with a numeric control system. Closure piping in linen cat. A Noli col. 3 Greige. Detachable accessory elements, attached to the structure through an interlocking system:  
- Sconce reading lamp with shade in jacquard fabric cat. A Deccan col. 2 Champagne.  
- Natural bevelled mirror (40 x 40 cm) on support in multilayer wood dyed matt Dark Wengé.  
- “Monkey” hanger in polished cast brass.  
- Shelf in solid beech wood dyed matt Dark Wengé, with tray in polished brass.

Slatted base included for mattress 180 x 200 cm.

## TIMGAD (page 43)



**E.TIM.551.AEX**  
Screen  
L 160-265 D 10-95 H 200 cm  
L 104 21/64-62 63/64 D 3 15/16-37 13/32 H 78 47/64 in

Side panels in Brushed Smoke Grey Dyed Vienna straw. Frame in solid beech wood dyed matt Dark Wengé, turned and worked with a numeric control system. Closure piping in wicker in same colour as Vienna straw.  
Central panel in printed fabric cat. B Leroy col. 2 Greige, with frame in linen cat. A Noli col. 3 Greige. Frame in solid beech wood dyed matt Dark Wengé, turned and worked with a numeric control system. Closure piping in linen cat. A Noli col. 3 Greige. Optional detachable accessory elements, attached to the back of the panel through an interlocking system:  
- Natural bevelled mirror (40 x 40 cm) on support in multilayer wood dyed matt Dark Wengé.  
- “Monkey” hanger in polished cast brass.  
- Shelf in solid beech wood dyed matt Dark Wengé, with tray in polished brass.



## GATHI (page 19, 21)



**E.GAT.551.AEX**  
Screen  
L 60-180 D 4-12 H 200 cm  
L 23 5/8-70 55/64 D 1 37/64-4 23/32 H 78 47/64 in

Three panels with structure in multilayer wood and frames in polished brass. Cover in jacquard fabric cat. B Greyton col. 2 Grey on one side and in Laminated Natural Mirror With Varanasi Print on the other side.

## KLEE (page 24)



**E.KLE.222.BDI**  
Pouf  
Ø 48 H 50 cm  
Ø 18 57/64 H 19 11/16 in

Structure in multilayer wood and variable thickness high density polyurethane foam. Seat upholstery in velvet cat. A Venezia col. 20 Jam, piping included. Side upholstery in velvet cat. A Venezia col. 19 Ash. Base in laser-cut aluminium with Brushed Dark Bronze finishing.

## MERIAM (page 32, 36)



**E.MEI.222.ADV**  
Pouf  
Ø 50 H 45 cm  
Ø 19 11/16 H 17 23/32 in

Structure in multilayer wood and variable thickness high density polyurethane foam. Seat upholstery in jacquard fabric cat. A Bukhara col. 2 Smoke. Side upholstery in velvet cat. A Venezia col. 17 Moka. Upper edge upholstery and piping in cat. A Venezia velvet col. 18 Smoke. Golden decorative nails on bottom. Base in Gold Lacquered MDF, grooved with a numeric control system.

## MERIAM (page 14-15)



**E.MEI.222.ADX**  
Pouf  
Ø 50 H 45 cm  
Ø 19 11/16 H 17 23/32 in

Structure in multilayer wood and variable thickness high density polyurethane foam. Seat and upper edge upholstery in velvet cat. A Genova col. 3 Lotus. Side upholstery in velvet cat. A Genova col. 2 Sage. Piping in velvet cat. A Genova col. 1 Rice. Decoration with ETRO motif with golden nails. Golden decorative nails on bottom. Base in Gold Lacquered MDF, grooved with a numeric control system.

## SAMARCANDA (page 41, 43)



**E.SAM.222.BEX**  
Pouf  
Ø 48 H 50 cm  
Ø 18 57/64 H 19 11/16 in

Structure in multilayer wood and variable thickness high density polyurethane foam. Seat upholstery in velvet cat. A Venezia col. 17 Moka, piping included. Side upholstery in jacquard fabric cat. B Greyton col. 3 Brown. Base in polished brass, with feet shaped like bamboo canes through handcrafted hot working metal process.

## AKBAR (page 47)



**E.AKB.411.BAX + E.AKB.813.BEX**  
Desk  
L 130 D 65 H 88 cm  
L 51 3/16 D 25 19/32 H 34 41/64 in

Structure in solid oak wood dyed matt Dark Wengé. Feet and side beams in aluminium with Brushed Dark Bronze finishing. Top in multilayer wood covered in aniline leather cat. A Cuero col. 2 Greige with decorative stitching. Drawers in multilayer wood with inner cover in microfibre. Front and back panel in multilayer wood covered in coated fabric cat. B Arnica col. 19 Cuoio. Storage compartments in solid beech wood dyed matt Dark Wengé, placed on the desk top. Internal partitions in multilayer wood covered in microfibre and coated fabric cat. B Arnica col. 19 Cuoio. Flap fronts in curved multilayer wood covered in coated fabric cat. B Arnica col. 19 Cuoio.

## CHANDRA (page 14-15)



**E.CHN.521.AIG**  
Console  
L 124 D 50 H 90 cm  
L 48 13/16 D 19 11/16 H 35 7/16 in

Structure in iron tubes with Dark Bronze finishing. Top support in iron with Dark Bronze finishing. Top in multilayer wood veneered in matt Dark Wengé Dyed Carbalho. Side panels in multilayer wood veneered in matt Dark Wengé Dyed Carbalho.

## KOLKATA (page 42-43)



**E.KOL.341.BAI**  
Dressing table  
L 120 D 55 H 138 cm  
L 47 1/4 D 21 17/64 H 54 21/64 in

Base in iron with Brushed Dark Bronze finishing. Top in multilayer wood covered in aniline leather cat. A Cuero col. 2 Greige with decorative stitching. Drawers in multilayer wood with inner cover in microfibre. Front in multilayer wood covered in aniline leather cat. A Cuero col. 2 Greige with decorative stitching. Double "E" handles in polished cast brass. Round mirror on panel in multilayer wood, covered in aniline leather cat. A Cuero col. 2 Greige and bordered by bronzed nails around the entire circumference. Mirror is fixed to the top with a rotating rod that guarantees flexible orientation.

## LASA (page 21-23)



**E.LAS.321.AGX**  
Night table  
L 55 D 44 H 51 cm  
L 21 21/32 D 17 21/64 H 20 5/64 in



**E.LAS.331.AGX**  
Drawer unit  
L 140 D 48 H 76 cm  
L 55 1/8 D 18 57/64 H 29 59/64 in

Structure and top in multilayer wood with lacquered matt Ivory spatula finishing. Drawers in multilayer wood with inner cover in microfibre. Front in multilayer wood with lacquered matt Ivory spatula finishing. Central detail lacquered Brushed Dark Bronze. Decorative Pegasus in laser-cut brass foil, fixed on the front of the top drawer. Base in multilayer wood with lacquered matt Ivory finishing.

## RAJAN (page 48, 50)



**E.RAJ.116.ADG**  
Cabinet  
L 112 D 50 H 162 cm  
L 44 3/32 D 19 11/16 H 63 25/32 in

Structure in multilayer wood veneered in matt Dark Wengé Dyed Carbalho. Top and door inserts lacquered Brushed Dark Bronze. Folding doors. "E" handles in polished cast brass. Inner parts covered in jacquard fabric cat. A Deccan col. 2 Champagne. Shelf in bronzed glass. Two drawers with inner cover in microfibre. Front of the drawer with knob in polished brass. Base in multilayer wood lacquered Brushed Dark Bronze. Beam in polished brass, with central insert in solid beech wood dyed matt Dark Wengé.

## PALMIRA (page 5, 7-9, 12)



**E.PAL.542.AIG**  
Modular bookcase  
L 291 D 50 H 266 cm  
L 114 9/16 D 19 11/16 H 104 23/32 in

Vertical supports in iron with Dark Bronze finishing. Adjustable mounting tips in polished brass. Horizontal modules in iron with Dark Bronze finishing, in three types guaranteeing customised settings, assembled with golden screws. Removable shelves in curved multilayer wood veneered in matt Dark Wengé Dyed Carbalho, attached to the structure by a magnetic system.



**DELFI** (page 47)



**E.DEL.512.AMX**  
Standing mirror  
L 130 D 5 H 200 cm  
L 51 3/16 D 1 31/32 H 78 47/64 in

Frame in polished brass, shaped like bamboo canes through handcrafted hot working metal process.  
Natural bevelled mirror, attached to a panel of multilayer wood with back covered in logo print canvas.

**KYOTO** (page 5, 8, 12, 18)



**E.KYO.621.AMX**  
Floor lamp  
Ø 35 H 180 cm  
Ø 13 25/32 H 70 55/64 in

Structure in metal with glossy gold finishing.  
Shades shaped like bamboo canes in transparent bronzed glass.  
3-light system, all with strip LED 17,3W - 24V - 77W - 8661lm - 3000K.  
Cable in gold fabric.

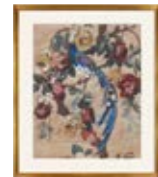
**DUNAND** (page 4)



**E.DUN.591.AMX**  
Print on canvas  
L 94 H 254 cm  
L 37 1/64 H 100 in

Print on canvas with ethnic theme on wooden panel.  
Wooden frame lacquered Brushed Dark Bronze.

**PAPIER** (page 15, 22-23)



**E.PAP.591.AMX**  
Floral print  
L 106 H 126 cm  
L 51 47/64 H 100 39/64 in

Floral print with motif inspired by vintage "papier peint" on jacquard paper.  
Passe-partout in ivory cardboard.  
Frame in solid wood with antique gold finishing and transparent closure in Crilex (synthetic glass) guaranteeing low weight and unbreakability.

**ARA** (page 18-19, 22-23)



**E.ARA.571.AMX**  
Rug  
L 400 D 300 cm  
L 157 31/64 D 118 7/64 in

Superior hand-tufted wool and bamboo silk with ETRO Paisley motif on the border.

**HENDRIX** (page 4-5, 7-9, 13)



**E.HEN.571.AMX**  
Rug  
L 400 D 300 cm  
L 157 31/64 D 118 7/64 in

Superior hand-tufted wool. Embossed pattern with ETRO Paisley.  
Col. Sage.

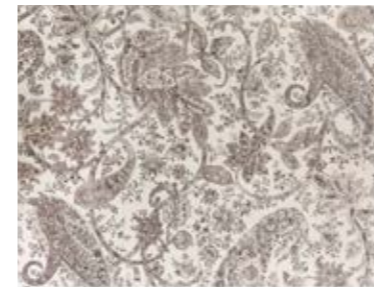
**TINGRI** (page 32-36, 47)



**E.TIN.571.AMX**  
Rug  
L 400 D 300 cm  
L 157 31/64 D 118 7/64 in

Superior hand-tufted wool and bamboo silk. Carved pattern with ETRO tibetan tigers.  
Col. Sand.

**VARANASI** (page 24-25, 40-43, 49, 51-53)



**E.VAR.571.AMX**  
Rug  
L 400 D 300 cm  
L 157 31/64 D 118 7/64 in

Superior hand-tufted wool and bamboo silk with ETRO floral pattern.





**DECORATIVE CUSHIONS**

**ICONS COLLECTION**

A selection of cushions that embodies the symbols of the brand identity.

**ARIKARA**  
Printed cushions set  
100% SE (front)  
100% CO (back)  
L 45 D 45 cm  
L 17 23/32 D 17 23/32 in



**E.EHC.821.SMX** (set 2x)

**CASSEAUX**  
Embroidered cushion  
60% VI, 40% CO (front)  
74% VI, 26% PL (back)  
L 45 D 45 cm  
L 17 23/32 D 17 23/32 in



**E.EHC.821.PMX**

**E.EHC.821.QMX**

**CASSEAUX burgundy**  
Embroidered cushion in velvet  
100% CO  
L 45 D 45 cm  
L 17 23/32 D 17 23/32 in



**E.EHC.821.BMX**

**CHOBE**  
Squared cushion with piping  
and Cowhide insert  
100% CO  
L 45 D 45 cm  
L 17 23/32 D 17 23/32 in



**E.EHC.821.IMX**

**E.EHC.821.KMX**

**E.EHC.821.JMX**

**E.EHC.821.HMX**

**DRAGOON**  
Embroidered cushion in velvet  
100% CO  
L 40 D 30 cm  
L 15 3/4 D 11 13/16 in



**E.EHC.822.OMX**

**CREST**  
Cushion in velvet with embroidered crest  
82% VI, 18% SE  
L 45 D 45 cm  
L 17 23/32 D 17 23/32 in



**E.EHC.822.AMX**

**E.EHC.822.BMX**

**E.EHC.822.CMX**

**ETAPLES**  
Embroidered cushion  
80% WO, 20% PA  
L 45 D 45 cm  
L 17 23/32 D 17 23/32 in



**E.EHC.821.AMX**

**GAGNANT**  
Embroidered cushion  
100% CO  
L 45 D 45 cm  
L 17 23/32 D 17 23/32 in



**E.EHC.821.CMX**

**LA FOURMI**  
Embroidered cushion  
100% CO  
L 45 D 45 cm  
L 17 23/32 D 17 23/32 in



**E.EHC.821.DMX**

**E.EHC.821.EMX**

**E.EHC.821.FMX**

**LA FOURMI beige**  
Embroidered cushion  
100% YAK  
L 45 D 45 cm  
L 17 23/32 D 17 23/32 in



**E.EHC.821.GMX**

ALL CUSHIONS ARE PADDED IN GOOSE (75%) AND DUCK (25%) DOWN COVERED IN 100% COTTON WHITE DOWN-PROOF CLOTH.  
ALL CUSHIONS ARE SOLD ONLY TOGETHER WITH SOFAS, ARMCHAIRS AND BEDS. THE SINGLE SALE OF THESE ARTICLES IS NOT ALLOWED.



## ICONS COLLECTION

A selection of cushions that embodies the symbols of the brand identity.

**MONOGRAM**  
Embroidered cushion  
100% CO  
L 45 D 45 cm  
L 17 23/32 D 17 23/32 in



E.EHC.821.LMX E.EHC.821.MMX

**MUSE**  
Bordered cushion with  
Cowhide insert  
100% CO  
L 45 D 45 cm  
L 17 23/32 D 17 23/32 in



E.EHC.821.NMX E.EHC.821.OMX

**MOMOTUS**  
Printed cushion with  
passanterie and plain  
velvet back  
60% VI, 40% LI (front)  
100% CO (back)  
L 60 D 60 cm  
L 23 5/8 D 23 5/8 in



E.EHC.822.DMX

**ORIOLO**  
Printed cushion with  
passanterie and plain  
velvet back  
60% VI, 40% LI (front)  
100% CO (back)  
L 60 D 60 cm  
L 23 5/8 D 23 5/8 in



E.EHC.822.EMX

**ROBIN**  
Printed cushion with  
passanterie and plain  
velvet back  
60% VI, 40% LI (front)  
100% CO (back)  
L 60 D 60 cm  
L 23 5/8 D 23 5/8 in



E.EHC.822.FMX

**CORELLA**  
Printed cushion with  
passanterie and plain  
velvet back  
60% VI, 40% LI (front)  
100% CO (back)  
L 60 D 60 cm  
L 23 5/8 D 23 5/8 in



E.EHC.822.GMX

**PETS**  
Embroidered cushion: jacquard  
front and plain velvet back  
42% WO, 40% VI, 18% SE (front)  
100% CO (back)  
L 45 D 45 cm  
L 17 23/32 D 17 23/32 in



E.EHC.822.LMX E.EHC.822.MMX E.EHC.822.NMX

**SANGHA**  
Knitted cushion  
100% WO  
L 45 D 45 cm  
L 17 23/32 D 17 23/32 in



E.EHC.821.TMX E.EHC.821.UMX E.EHC.821.VMX E.EHC.821.WMX

**SOMERSET**  
Cushion in velvet with embroidered  
pegasus and piping  
60% VI, 40% CO  
L 45 D 45 cm  
L 17 23/32 D 17 23/32 in



E.EHC.822.HMX E.EHC.822.IMX E.EHC.822.JMX E.EHC.822.KMX

**TSAVO**  
Cushion with piping  
36% WO, 18% VI, 17% PL  
14% AC, 9% CO, 6% PA  
L 45 D 45 cm  
L 17 23/32 D 17 23/32 in



E.EHC.821.RMX

## ETRO HOME INTERIORS COLLECTION

Cushions with piping covered in fabric or leather from the Etro Home Interiors collection.

L 45 D 45 cm  
L 17 23/32 D 17 23/32 in



Fabric cat. A  
E.COM.821.DDX  
Fabric cat. B  
E.COM.821.DEX  
Leather cat. A  
E.COM.821.DAX

L 50 D 50 cm  
L 19 11/16 D 19 11/16 in



Fabric cat. A  
E.COM.821.EDX  
Fabric cat. B  
E.COM.821.EEX  
Leather cat. A  
E.COM.821.EAX

L 60 D 60 cm  
L 23 5/8 D 23 5/8 in



Fabric cat. A  
E.COM.821.ADX  
Fabric cat. B  
E.COM.821.AEX  
Leather cat. A  
E.COM.821.AAX

L 50 D 30 cm  
L 19 11/16 D 11 13/16 in



Fabric cat. A  
E.COM.821.CDX  
Fabric cat. B  
E.COM.821.CEX  
Leather cat. A  
E.COM.821.CAX

L 60 D 35 cm  
L 23 5/8 D 13 25/32 in



Fabric cat. A  
E.COM.821.BDX  
Fabric cat. B  
E.COM.821.BEX  
Leather cat. A  
E.COM.821.BAX

## BEDCOVER SET

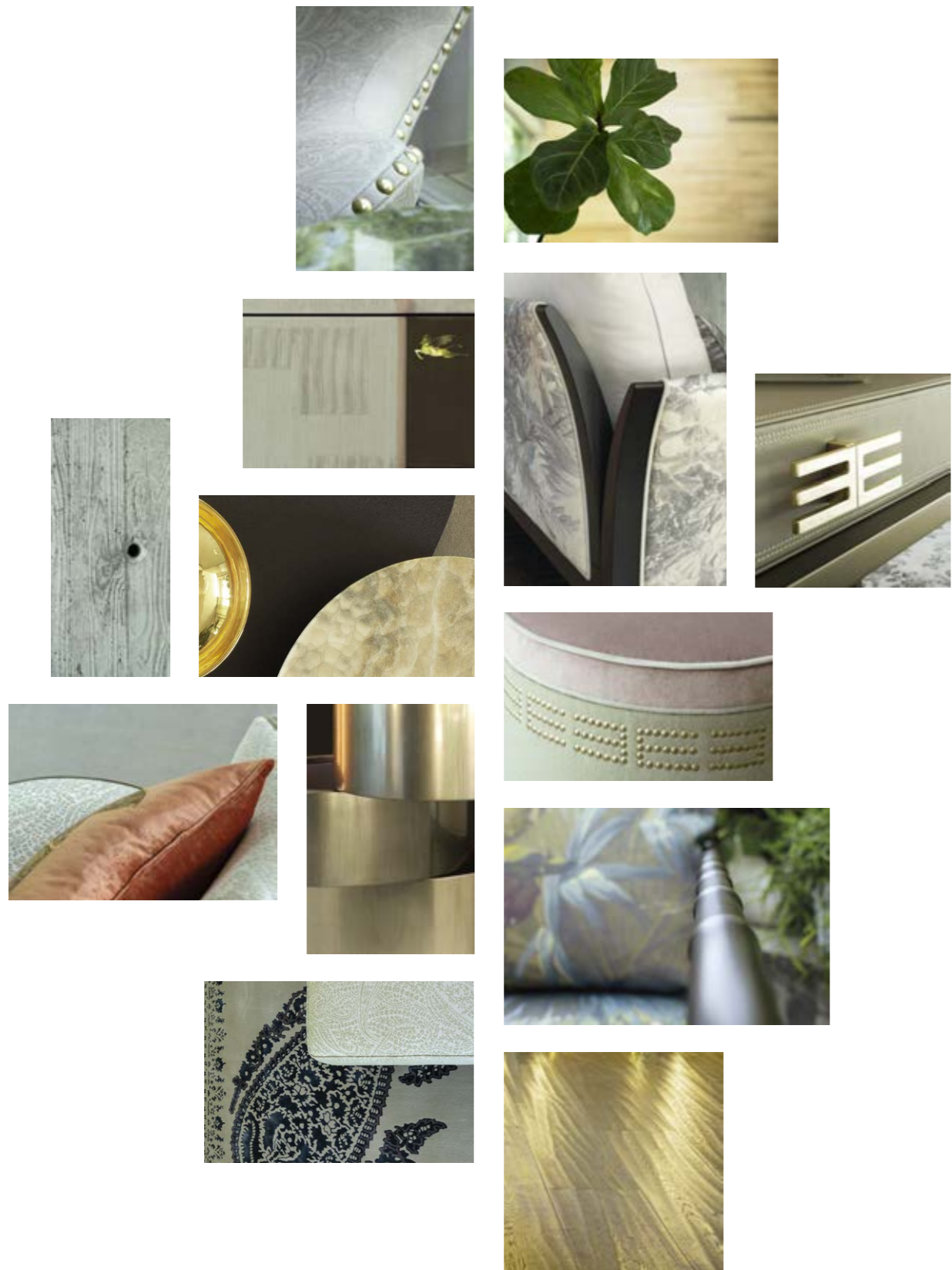
**DAINVILLE**

**E.EHC.832.AMX**  
Quilted bedcover with edge in  
Paisley pattern printed silk,  
plain silk and plain cotton satin  
100% SE (front)  
100% CO (back)  
L 270 D 270 cm  
L 106 19/64 D 106 19/64 in

**E.EHC.821.XMX (set 2x)**  
Cushions with piping  
100% SE  
L 45 D 45 cm  
L 17 23/32 D 17 23/32 in







Stylist **Maria Trezzi**  
Photographs **Azimak Photo**

Pre-press **Monogramma, Cantù**  
Printed in Italy by **Grafica Gioia, Cantù**  
11.2021 © Copyright by **Jumbo Group s.r.l.**

This catalogue is property of Jumbo Group and cannot be sold. You may not reproduce any part of this catalogue without written authorization of the publisher. There are no licenses, either implied or expressed, to reproduce any part of this catalogue unless the license is in writing and signed by Jumbo Group. Copyright Laws protect the content of this catalogue, including the photographs and furniture design.

Pictures have an indicative value. The dimensions are approximate (with a tolerance of +/- 2%) and subject to change. The company preserves the right to change the technical features of the products shown in this catalogue without notice as a result of technical updates.

  
**ETRO**  
Home Interiors

[etrohomeinteriors.jumbogroup.it](http://etrohomeinteriors.jumbogroup.it)

JUMBO GROUP  
via Montesolaro 14 | 22063 Cantù (Co) Italy  
ph. +39.031.70757 | fax +39.031.711540  
[info@jumbogroup.it](mailto:info@jumbogroup.it) | [www.jumbogroup.it](http://www.jumbogroup.it)