

**DESIGN**

**IS AT  
THE CORE  
OF US**

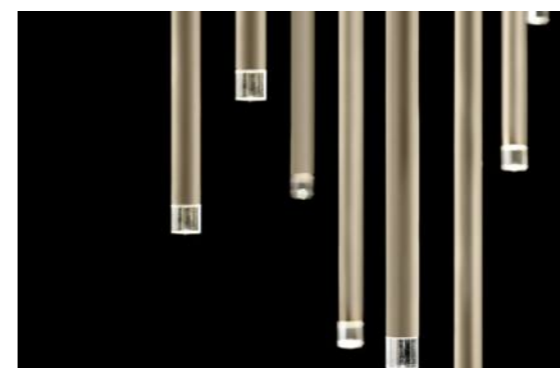


## SUNFLOWER

1267

MATERIAL CARBON STEEL+STAINLESS STEEL+ACRYLIC  
COLORS BRUSHED BRASS+STONE WHITE+WHITE/BRUSHED BRASS+WHITE

SUNFLOWER YEARNS FOR BRIGHT AND WARM, AND THE DELICATE AND PLAYFUL FILIGREE NETWORK PROJECTION IS FASCINATING.



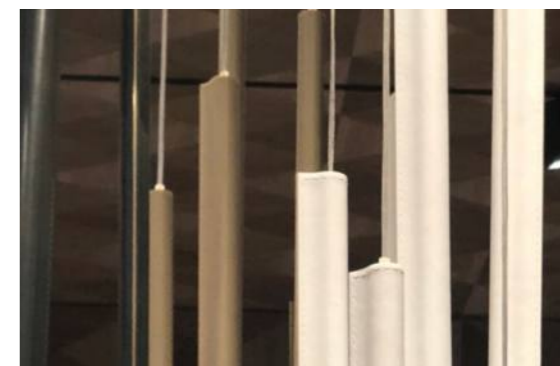
## METEOR

1280

MATERIAL STAINLESS STEEL+ALUMINUM ALLOY+ACRYLIC  
COLORS LIGHT TITANIUM/XIAMENG BLACK

THE UNIQUE CREATION BRINGS YOU AN ETERNAL METEOR SHOWER.





## DEBBIE

1282

MATERIAL ALUMINUM ALLOY+CARBON STEEL+ LEATHER  
COLORS BRUSHED GOLD+DARK GRAY/WHITE

THE BODY OF THE LAMP IS POLISHED BY FINE ALUMINUM MATERIAL, AND THE SURFACE IS PASTED WITH DELICATE LEATHER, WITH EVEN AND BEAUTIFUL STITCHES, AND A MORE ARTISTIC FEELING. THE LIGHT EFFECT GATHERS INTO A CIRCLE AND GIVES A SOFT LIGHT COLOR. THERE IS NO BOLD MODELING, BUT IT EMBODIES A RATIONAL BEAUTY BY CONCISENESS.





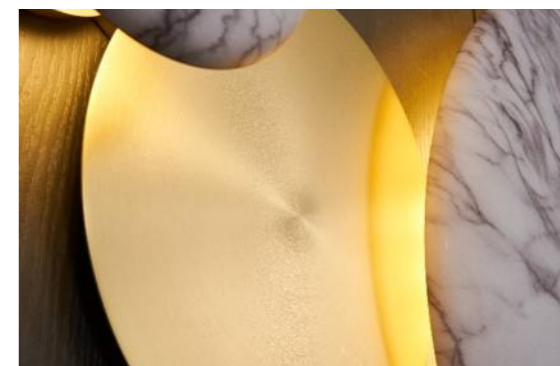
## HORMONE CELLS

1285

MATERIAL CARBON STEEL / ACRYLIC / ALUMINUM ALLOY  
COLORS EARL GOLD / STONE GRAIN WHITE + SEMI-MATTE COPPER BRUSHED

THE SECRETION OF DOPAMINE MAKES COUNTLESS CELLS IN THE MUSCLE CHEER.





## HORMONE CELLS

1285

MATERIAL CARBON STEEL / ACRYLIC/ALUMINUM ALLOY  
COLORS EARL GOLD/STONE GRAIN WHITE+SEMI-MATTE COPPER BRUSHED

THE SECRETION OF DOPAMINE MAKES COUNTLESS CELLS IN THE MUSCLE CHEER.





## BUTTON

1288

MATERIAL CARBON STEEL + ALUMINUM ALLOY + GLASS  
COLORS SEMI-MATTE COPPER BRUSHED/STONE GRAIN WHITE + TRANSPARENT STRIPES

I LOOK FORWARD TO A GOOD STORY WHEN I PRESS EVERY BUTTON.





## FRUITFUL

1289

MATERIAL CARBON STEEL + ALUMINUM ALLOY + GLASS  
COLORS SEMI-MATTE COPPER WIRE DRAWING/MILK ACID

THE BENT BRANCHES ARE COVERED WITH DELICIOUS FRUITS.





## WALL CLIP

1291

MATERIAL CARBON STEEL  
COLORS EARL GOLD/STONE GRAIN WHITE

THE AMBIENT LIGHTING AND THE EYE-CATCHING DECORATION ARE SUBTLY FILLED WITH THE WIDE WALLS TO THE SAME DEGREE, TURNING A BLANK WALL INTO A CANVAS FOR ARTWORKS.







## DEWDROPS

1293

MATERIAL CARBON STEEL + ALUMINUM ALLOY + GLASS  
COLORS SEMI-MATTE COPPER BRUSHED/PRINCE ASH+CLEAR/AMBER/SMOKY ASH

IN THE MIDSUMMER NIGHT, THE DEWDROPS HANGING ON THE GRASS BLADES WERE ILLUMINATED BY THE FAINT MOONLIGHT.







## HERON

1294

MATERIAL CARBON STEEL + MARBLE + GLASS  
COLORS SEMI-MATTE COPPER WIRE DRAWING + BLACK AND WHITE ROOT + MILK ACID

THE FLOOR LAMP HERON REPRESENTS AN ELEGANT SOLUTION IN THE MOST COMPLEX ENVIRONMENTS. THE LIGHT SPREADS THROUGH BLOWN GLASS BALLS, WHICH WAS ACHIEVED BY GLASS MASTERS IN VENICE USING THE "BALLOON" TECHNIQUE TO CREATE A THREE-DIMENSIONAL CROSS PATTERN ON THE SURFACE. THE SPHERE IS SUPPORTED BY TWO SHINY BRUSHED METAL COLUMNS OF DIFFERENT HEIGHTS, WHICH EXTEND FROM THE BASE OF THE POPLAR ROOT-LIKE TRAY TO THE TOP.



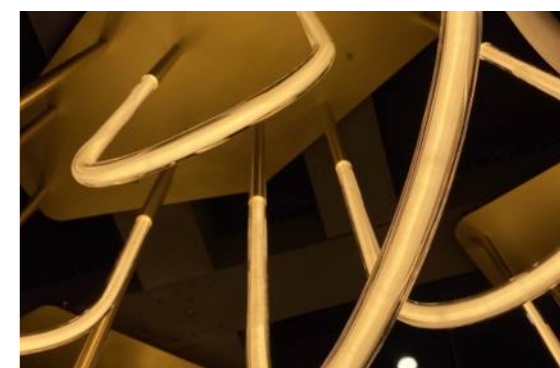


## BUBBLES

1305

MATERIAL CARBON STEEL + ALUMINUM ALLOY + GLASS  
COLORS SEMI-MATTE COPPER BRUSHED + CLEAR LIGHT / SOOT / GOLD

FANTASTIC AND COLORFUL BUBBLES FLY FREELY, SOMETIMES RISING AND SOMETIMES LANDING.



## KIRA 1308

MATERIAL METAL+STONE+GLASS  
COLORS SEMI-MATTE COPPER BRUSHED/XIAMENG BLACK+TRANSPARENT

THE LAMP BODY OF THE FLEXIBLE FILAMENT IS FIXED ON THE BASE OF THE RECTANGLE WITH A STRAIGHT LINE, U- SHAPED UPWARD BEND SHAPE. THE COMBINATION OF MINIMALISM AND GEOMETRY GIVES IT A STRONG PERSONALITY AND A SENSE OF BALANCE AND CHAOS.THE LEDS ON THE PERIPHERY OF THE U-SHAPE EMIT A SOFT, WARM AND POWERFUL LIGHT WHOSE BRIGHTNESS CAN BE EASILY ADJUSTED TO SUIT THE OPTIMAL ATMOSPHERE REQUIRED.









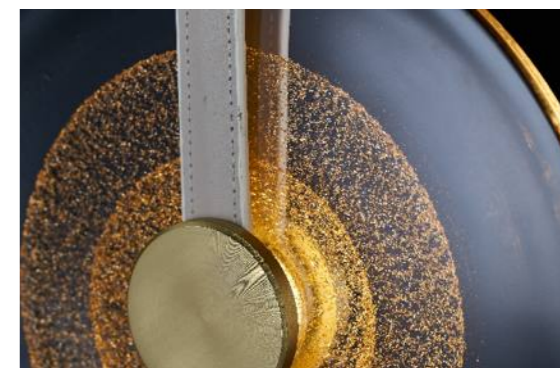
## ADLER

1298

MATERIAL CARBON STEEL + ALUMINUM ALLOY  
COLORS BRUSHED SEMI-MATTE COPPER / PRINCE GREY + BRUSHED SEMI-MATTE COPPER

THERE IS A DISC ON THE FRONT, WHICH ENHANCES THE CONTRAST OF COLORS IN A SIMPLE GRAPHICAL WAY, GIVING THE ILLUSION OF ACHIEVING A PERFECT BALANCE ON THE SURFACE. THIS IS BECAUSE THE THIN LIGHT SOURCE EMITS OBLIQUE LIGHT INSIDE.





## GOLDEN DISC

1312

MATERIAL CARBON STEEL + ALUMINUM ALLOY + HANDMADE GLASS  
COLORS SEMI-MATTE COPPER WIRE DRAWING+TRANSPARENT SET OF GOLD

IT IS AS IF THE LIFE FORCE ORIGINALLY FORMED IN THE UNIVERSE IS SURROUNDED BY GOLDEN LIGHT.





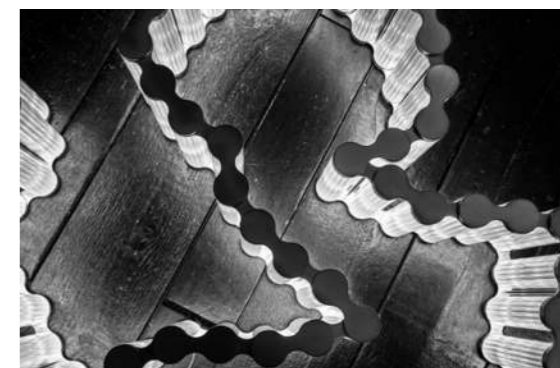
## SYMBOL

1313

MATERIAL ALUMINUM ALLOY + CARBON STEEL  
COLORS BRUSHED COPPER

IT IS LIKE A NEW KIND OF GRAPHIC CHARACTER, COMPOSED OF BASIC GEOMETRIC ELEMENTS, DEPICTING THE FORM OF LIGHT IN CONTEMPORARY SPACE.





## CHAIN

1318

MATERIAL ALUMINUM ALLOY + CARBON STEEL + GLASS  
COLORS SEMI-MATTE COPPER BRUSHED + CLEAR LIGHT

RIDING A BICYCLE, FEEL THE ENDLESS PLEASURE OF CHAIN DRIVEN WHEELS.









## ECLIPSE

1319

MATERIAL CARBON STEEL + ALUMINUM ALLOY + LEATHER + GLASS  
COLORS SEMI-MATTE COPPER BRUSHED/PRINCE GRAY + MILK ACID

LUNAR ECLIPSES ARE STRANGE AND STRANGE IN THE VAST EXPANSE  
OF CELESTIAL BODIES.





## ECLIPSE

1319

MATERIAL CARBON STEEL + ALUMINUM ALLOY + LEATHER + GLASS  
COLORS SEMI-MATTE COPPER BRUSHED/PRINCE GRAY + MILK ACID

LUNAR ECLIPSES ARE STRANGE AND STRANGE IN THE VAST EXPANSE  
OF CELESTIAL BODIES.





## CONE

1322

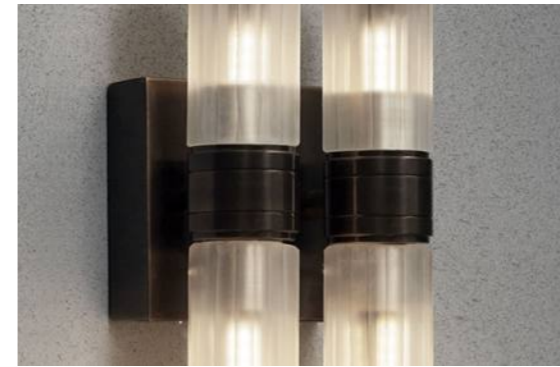
MATERIAL CARBON STEEL + GLASS  
COLORS SEMI-MATTE COPPER WIRE DRAWING+TRANSPARENT+PLATING

THE SHOCK WAVE BECOMES A CONE OF COMPRESSED GAS MOLECULES, WHICH EXTENDS TO THE GROUND IN ALL DIRECTIONS OUTWARD AND BACKWARD.









## GLO-STICKS 1324

MATERIAL CARBON STEEL + ALUMINUM ALLOY + WATER GOLD  
COLORS SEMI-MATTE COPPER BRUSHED + TRANSPARENT MATTE

SAY IN A VOICE, "WHEN YOU ARE HAPPY, YOU SHOULD VIGOROUSLY  
WAVE YOUR GLOW STICKS."



## GLO-STICKS 1324

MATERIAL    CARBON STEEL + ALUMINUM ALLOY + WATER GOLD  
COLORS      SEMI-MATTE COPPER BRUSHED + TRANSPARENT MATTE

SAY IN A VOICE, "WHEN YOU ARE HAPPY, YOU SHOULD VIGOROUSLY  
WAVE YOUR GLOW STICKS."



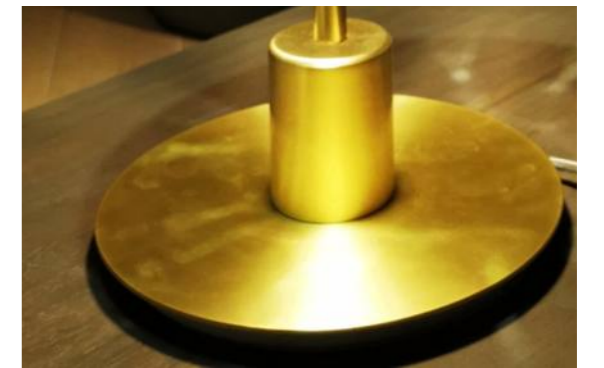


## NOOR 1284

MATERIAL CARBON STEEL/ALUMINUM ALLOY  
COLORS SEMI-MATTE COPPER BRUSHED/XIAMENG BLACK+SEMI-MATTE COPPER BRUSHED

WHILE SMALL TRANSPARENT LENSES DECORATE THEIR SHAPES WITH THEIR LINES. THE PURSUIT OF EXQUISITE SIMPLICITY, THE BALANCE BETWEEN LIGHT AND MATTER.





## JOLIE 1117

MATERIAL CARBON STEEL + ALUMINUM ALLOY + GLASS  
COLORS SEMI-MATTE COPPER BRUSHED + TRANSPARENT

THE SIMPLE SPHERICAL SHAPE PROVIDES A LOW-KEY EMPHASIS, WITH LIGHT PASSING THROUGH THE GLASS LAMPSHADE, WITH BRIGHT SUNBURST SHADOWS AND LIGHT RADIATING THROUGH THE



## JOLIE 1117

MATERIAL CARBON STEEL + ALUMINUM ALLOY + GLASS  
COLORS SEMI-MATTE COPPER BRUSHED + TRANSPARENT

THE SIMPLE SPHERICAL SHAPE PROVIDES A LOW-KEY EMPHASIS,  
WITH LIGHT PASSING THROUGH THE GLASS LAMPSHADE, WITH  
BRIGHT SUNBURST SHADOWS AND LIGHT RADIATING THROUGH THE





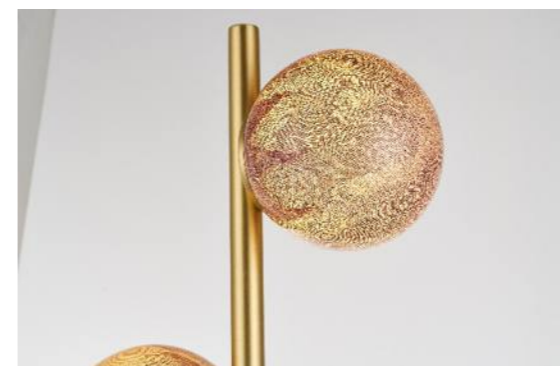




## ERIC 1307

MATERIAL CARBON STEEL + COPPER + GLASS  
COLORS SEMI-MATTE COPPER BRUSHED + CLEAR SET OF PURPLE JADE

A WHITE GLASS MOIL IS CAPTURED INSIDE A FINE COPPER MESH BASKET AND THEN PLUNGED INTO HOT CLEAR GLASS. AIR IS BLOWN INTO THE MATRIX TO GENTLY PUSH THE WHITE GLASS THROUGH THE MESH, CREATING A DELICATE PILLOWED FORM THAT IS SUSPENDED INSIDE THE THICK OUTER LAYER OF CLEAR GLASS.



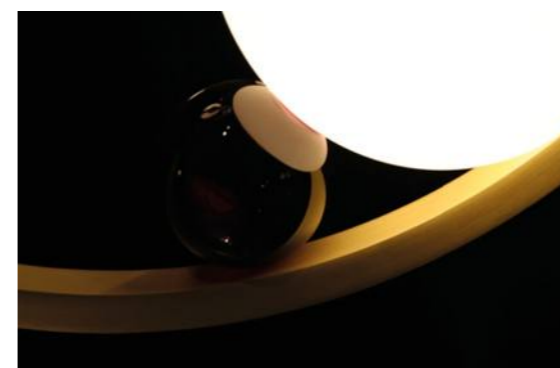
## ERIC 1307

MATERIAL    CARBON STEEL + COPPER + GLASS  
COLORS      SEMI-MATTE COPPER BRUSHED + CLEAR SET OF PURPLE JADE

A WHITE GLASS MOIL IS CAPTURED INSIDE A FINE COPPER MESH BASKET AND THEN PLUNGED INTO HOT CLEAR GLASS. AIR IS BLOWN INTO THE MATRIX TO GENTLY PUSH THE WHITE GLASS THROUGH THE MESH, CREATING A DELICATE PILLOWED FORM THAT IS SUSPENDED INSIDE THE THICK OUTER LAYER OF CLEAR GLASS.







## VINSON 1287

MATERIAL ALUMINUM ALLOY + GLASS  
COLORS SEMI-MATTE COPPER BRUSHED/XIAMENG BLACK+MILK AND RED

MADE OF INTERLOCKING BRASS RINGS THAT CAN BE MAGNIFIED TO FORM LONG VERTICAL CHANDELIERS. THE CIRCLE IS THE SIMPLEST FORM, AND WE USE THE WHOLE COMBINATION OF RED AND WHITE MARBLES TO CREATE A STRIKING VERTICAL DECORATION.







## CARSON 1290

MATERIAL CARBON STEEL + ALUMINUM ALLOY + GLASS  
COLORS BRUSHED SEMI-MATTE COPPER + BRUSHED SEMI-MATTE COPPER/PRINCE GRAY  
+ LACTIC ACID

THIS AWARD-WINNING DESIGN IS ALL ABOUT THE DETAILS. BRASS AND HAND-BLOWN GLASS SEAMLESSLY BLEND INTO THE MATTE-FINISH ARMATURE. THE APOLLO COLLECTION FEATURES A BALANCED, DOUBLE-STEMMED LUMINARY, HOUSING LEDS IN OPAL GLASS SHADES TO CAST A BRILLIANT YET SOFT LIGHT.



## FISHERMAN 2377

MATERIAL CARBON FIBER  
COLORS WHITE+BLACK/BEIGE

ONE PERSON, ONE POLE, ONE OBJECT, ONE LAMP, SIMPLE  
COMBINATIONS MAKE LIFE MORE INTERESTING.





## FISAMINGO

2379

MATERIAL ALUMINIUM ALLOY/IRON/ACRYLIC  
COLORS COPPER WIRE DRAWING/GUN BLACK

FLAMINGO SERIES SYMBOLIZES FREEDOM, EXPRESSING A REFUSAL TO DULL, UNBRIDLED PUBLICITY.





## HONEYPOT 2383

MATERIAL GLASS/CARBON STEEL/ALUMINIUM/ACRYLIC  
COLORS METAL GUN BLACK/GLASS ROSE GOLD/SOOT  
/METAL COPPER WIRE DRAWING/TRANSPARENT

A HARDWORKING "BREWMAN" RAN THOUSANDS OF MILES TO PUT  
THE REFINED NECTAR FROM THE FLOWERS INTO A JAR.



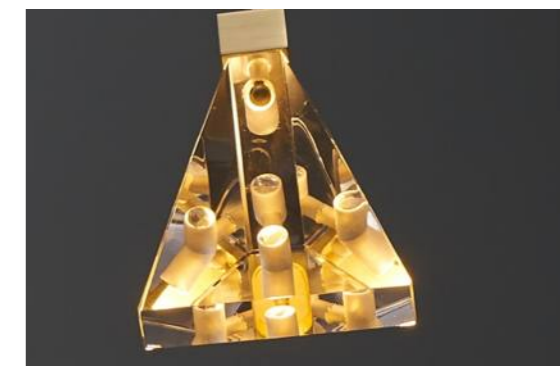
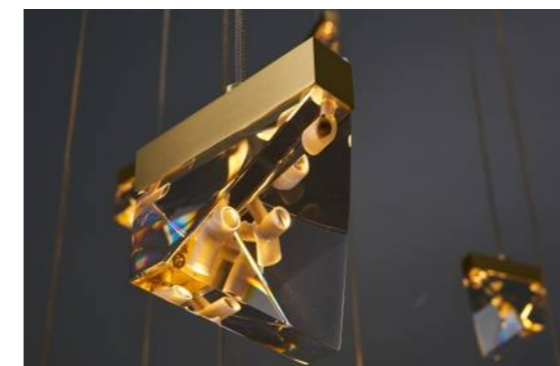


## FLOAT 2390

MATERIAL IRON/ALUMINUM/ACRYLIC  
COLORS CROWN PRINCE GREY/EARL GOLD

FLOATING CAN BE THOUGHT OF AS HAVING A DIV ELEMENT FLOAT ABOVE THE STANDARD STREAM, NOT ON THE SAME LEVEL AS THE STANDARD STREAM.



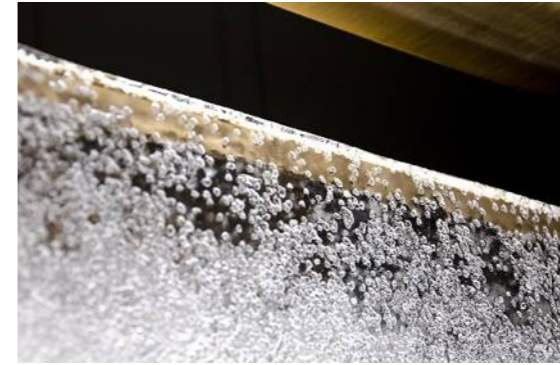


## ICE CRYSTAL 1295

MATERIAL CARBON STEEL/ALUMINIUM ALLOY/CRYSTAL  
COLORS SEMI-DUMB COPPER WIRE DRAWING/TRANSPARENT

CLUSTERS OF FROZEN ICE CRYSTALS ARE EITHER BUDDING OR BLOOMING, GIVING THEM A MORE DISTINCT SENSE OF LAYERING AND THREE-DIMENSIONALITY.





## SHADE 1323

MATERIAL STAINLESS STEEL/ACRYLIC  
COLORS SHALLOW TITANIUM GOLD/TRANSPARENT RIPPLE

CHANDELIER SHADE, ABLE TO VALUE THE BEAUTY OF RECTANGULAR TABLES IN DINING AREAS, IS COMPOSED BY FIVE HANGING ELEMENTS.





## FLOAT 1321

MATERIAL CARBON STEEL/ACRYLIC  
COLORS MATTE FINISH

THERE IS MOVEMENT IN STILLNESS. AS IF THE WATER WERE FLOATING WITH THE WAVES AND THE STREAM WAS WINDING WITH THE MOUNTAIN.





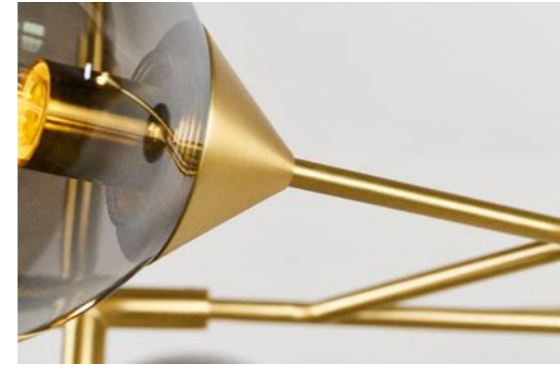
## DARK & BRIGHT STAR 1297

MATERIAL CARBON STEEL/ALUMINIUM ALLOY/GLASS  
COLORS DRAWN GOLD/CLEAR LIGHT/SOOT/AMBER/ACID WASH

LIKE DISTANT STARS, THE "DARK AND BRIGHT STARS" SERIES IS CHARACTERIZED BY A COMBINATION OF SEEMINGLY INCOMPATIBLE CONTRASTS.







## KENDAMA 1317

MATERIAL CARBON STEEL/ALUMINIUM ALLOY/GLASS  
COLORS SEMI-DUMB COPPER WIRE DRAWING  
/PRINCE GREY CLEAR LIGHT/AMBER/SOOT

A RANGE OF LAMPS WHOSE COMPOSITION IS FREE, LIKE THE GAME THAT INSPIRED THEIR DESIGN. OFFERED IN A VARIETY OF COMBINATIONS, THEY ALL SHARE THREE COMPONENTS: A STEM, A CONE AND A SPHERE.



