



SERIP

complements



Origem

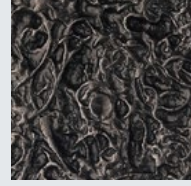
The starting point, the beginning, the source, the trunk of the offspring. The origin that brings together a concept. Joining our inspiration into a singular and unique form that translates Serip's language creating a piece that establishes the core of the tailormade and diffuses our particular way of expressing ourselves. We proudly present the 'Origem' handrail, nailing our roots to the ground.

CR100/L + CR100/R FO | Handrail only available through project

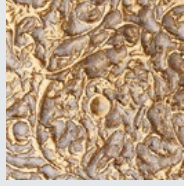


Vogel

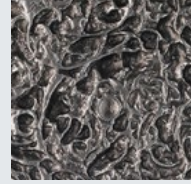
Inspired by the lunar surface, Vogel handle was named after a small moon crater, establishing the connection with the pattern composed by thousands of tiny craters, producing shades and unique forms that print the Serip's signature using singular organic patterns. This piece reproduces several nature impacts, resulting from the touch of other celestial bodies with thousands and millions of years. Creating unique forms that can be discovered and rediscovered in every touch and every look.



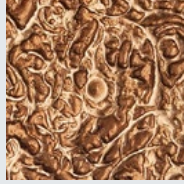
Black



Gold/White Patina



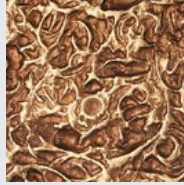
Palladium



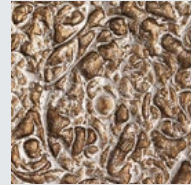
Pink Gold



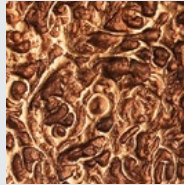
Lead



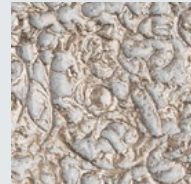
Gold



Silver



Copper



Silver/White Patina



Talha





Nimbus

In the immensity of the sky, we can contemplate the most varied patterns of this natural phenomenon, which scatters clouds like pieces of cotton and mixes them with contrasting tones, in the most different shapes and forms they are responsible for stunning natural effects scintillating rays and majestic thunderings. The Nimbus handle perpetuates the shapes of these rays drawn in the sky as if it had caught the moment when light tears heaven.





Liana

Liana handle represents any long-stemmed woody vine that is rooted in the soil and climbs or twines around other plants. Flattened or twisted lianas often become tangled together to form a hanging network.



Black



Gold/White Patina



Palladium



Pink Gold



Lead



Gold



Silver



Copper



Silver/White Patina



Talha

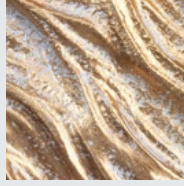


Dunas

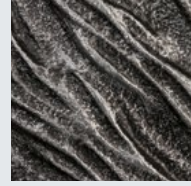
With a texture inspired by the impressive dunes of Namibia the Dunas handles are the reflection of this jewel of Africa, presenting itself as a gateway to a magical paradise where we find the harmony of nature. We open the doors to the superb immensity of this magical paradise and take you to travel at the crossroads of the world of nature with its replica in a unique piece of art.



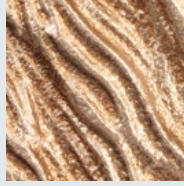
Black



Gold/White Patina



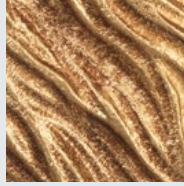
Palladium



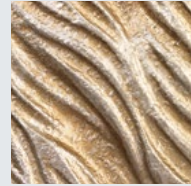
Pink Gold



Lead



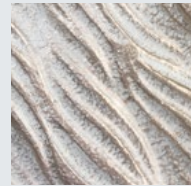
Gold



Silver



Copper



Silver/White Patina



Talha





Torso

Inspired by the way a torso wiggles, creating new curves that balance all the shafts and twists. This shape looks like a tree trunk dancing to the sound of the wind breeze. The Torso handle personifies a sculpture of a sinuous body, almost like a frozen moment of nature.





Pando

From the Latin "I spread", Pando means exactly that, the propagation and growth of root systems that function as a continuous extension of intertwined roots. Inspired by a single tree colony, named Quaking Aspen in Utah, This door handle demonstrates the grandeur and conveys the strength needed to sustain the art of nature for millions of years.





Aqua

ROOM DIVIDERS

The Aqua panel is part of an iconic set of the Serip family - the Aqua Collection. That expresses a strong connection to the main inspiration source, nature. The bronze structure expands in entangled branches that lead to floating glass pieces, a characteristic that concedes an airy touch together with its delicate and elegant look, concepts visible in the smallest detail of the glass drops. Through several chromatic choices and design options, presents itself as an exquisite nature-inspired piece, perfect for any concept or for divide spaces and designate areas.



Folio

DECORATIVE CEILING

Spreading art in ceilings, the falling maple leaves have the intensity of a still moment directly withdraw from nature. Vertical compositions adding the picturesque sight of Autumn in both classic and contemporary interiors. With three different dimensions and with uneven features in the biggest dimensions, creates endless presentation possibilities.



TD106 FO



TD104 FO



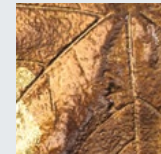
TD105 FO



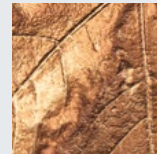
TD107 FO



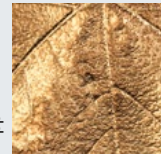
TD103 FO



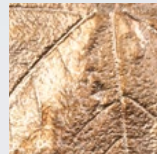
Talha



Copper



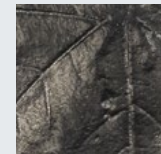
Gold



Pink Gold



Gold/White Patina



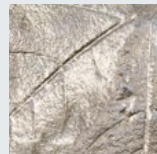
Black



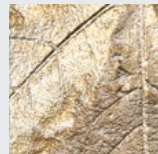
Lead



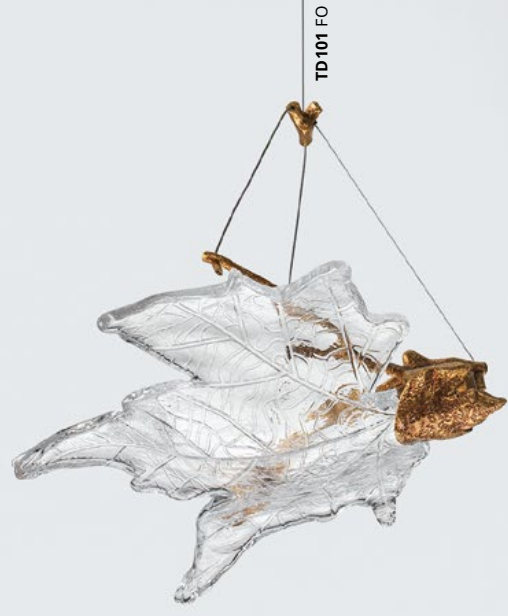
Palladium



Silver/White Patina



Silver





PD100 FO



PD101 FO

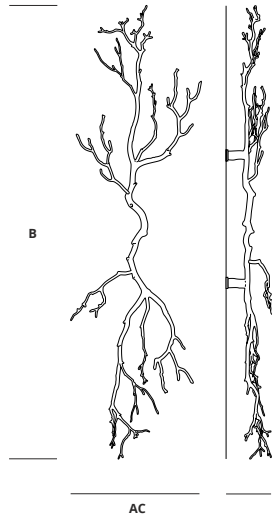
Folio

DECORATIVE WALL

Completing the imaginary of fallen leaves with the decorative wall pieces can reflect the arbitrary composition of patterns in a complex set of contrasts resulting in a sense of an enchanted environment.



PANDO



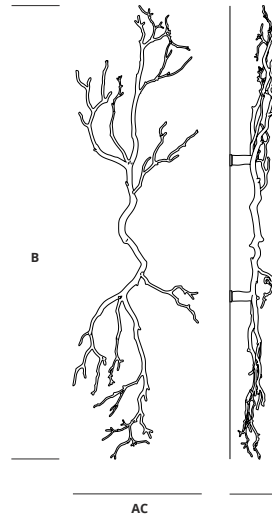
PX100/L

- A** 50cm \ 20in
- B** 175cm \ 69in
- C** 17cm \ 7in

Δ +/- 7Kg \ 15Lb

☐ 2,00 x 0,80 x 0,67 = 1,07CBM

Note: Wooden surfaces only. Subject to project for different materials.



PX100/R

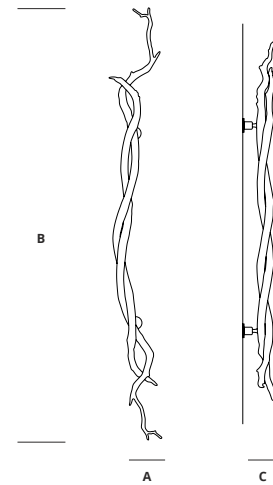
- A** 50cm \ 20in
- B** 175cm \ 69in
- C** 17cm \ 7in

Δ +/- 7Kg \ 15Lb

☐ 2,00 x 0,80 x 0,67 = 1,07CBM

Note: Wooden surfaces only. Subject to project for different materials.

LIANA



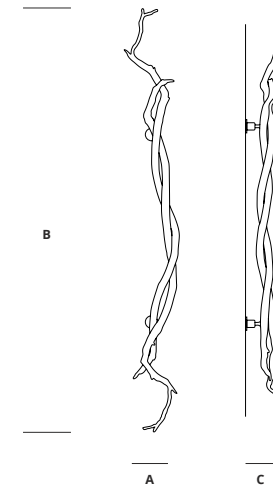
PX103/L

- A** 17cm \ 7in
- B** 116cm \ 46in
- C** 10cm \ 4in

Δ +/- 4Kg \ 9Lb

☐ 1,20 x 0,24 x 0,24 = 0,07 CBM

Note: Wooden surfaces only. Subject to project for different materials.



PX103/R

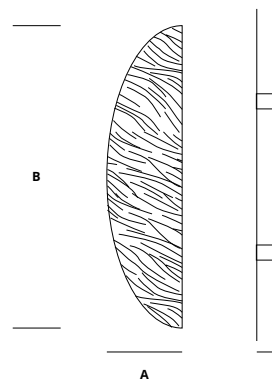
- A** 17cm \ 7in
- B** 116cm \ 46in
- C** 10cm \ 4in

Δ +/- 4Kg \ 9Lb

☐ 1,20 x 0,24 x 0,24 = 0,07 CBM

Note: Wooden surfaces only. Subject to project for different materials.

DUNAS



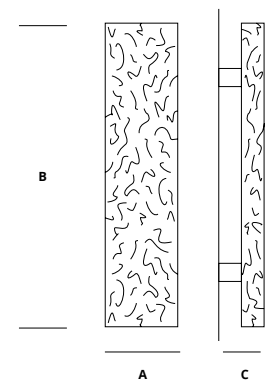
PX101

- A** 10cm \ 4in
- B** 40cm \ 16in
- C** 3cm \ 1,2in

Δ +/- 2Kg \ 4Lb

☐ 0,42 x 0,42 x 0,32 = 0,06 CBM

Note: Wooden surfaces only. Subject to project for different materials.



PX102

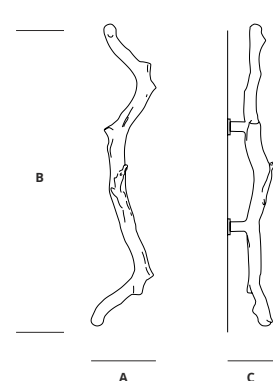
- A** 8cm \ 3in
- B** 34cm \ 13in
- C** 5cm \ 2in

Δ +/- 2,5Kg \ 5,5Lb

☐ 0,42 x 0,42 x 0,32 = 0,06 CBM

Note: Wooden surfaces only. Subject to project for different materials.

TORSO



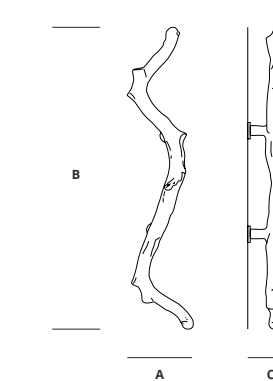
PX104/L

- A** 17cm \ 7in
- B** 77cm \ 30in
- C** 12cm \ 5in

Δ +/- 5Kg \ 11Lb

☐ 0,96 x 0,24 x 0,24 = 0,06 CBM

Note: Wooden surfaces only. Subject to project for different materials.



PX104/R

- A** 17cm \ 7in
- B** 77cm \ 30in
- C** 12cm \ 5in

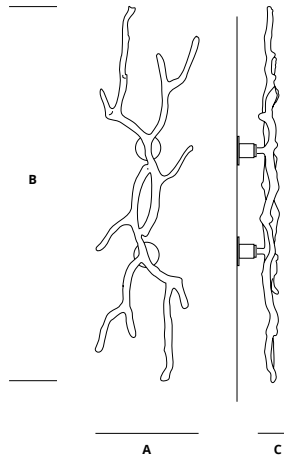
Δ +/- 5Kg \ 11Lb

☐ 0,96 x 0,24 x 0,24 = 0,06 CBM

Note: Wooden surfaces only. Subject to project for different materials.

VOGEL

NIMBUS

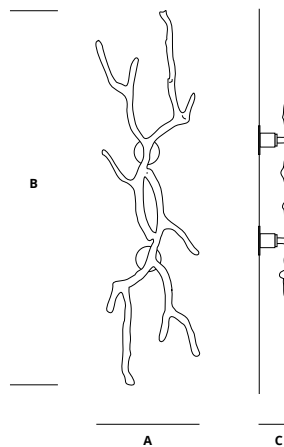


PX105/L

- A** 15cm \ 6in
- B** 55cm \ 22in
- C** 6,5cm \ 2,5in
- Δ** +/- 2Kg \ 1Lb

☐ 0,66 x 0,24 x 0,24 = 0,04 CBM

Note: Wooden surfaces only. Subject to project for different materials.



PX105/R

- A** 15cm \ 6in
- B** 55cm \ 22in
- C** 6,5cm \ 2,5in
- Δ** +/- 2Kg \ 1Lb

☐ 0,66 x 0,24 x 0,24 = 0,04 CBM

Note: Wooden surfaces only. Subject to project for different materials.

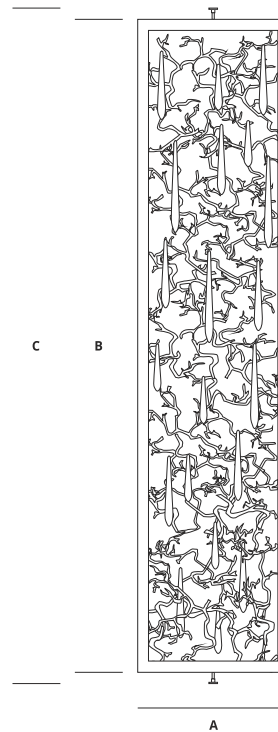
AQUA

BO100

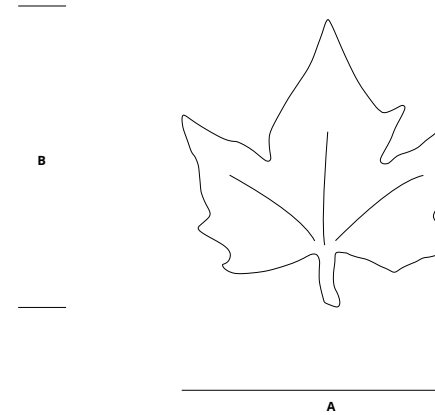
- A** 70cm \ 4in
- B** 290cm \ 114in
- C** 300cm \ 118in
- Δ** +/- 32Kg \ 71Lb

☐ 3,10 x 0,85 x 1,00 = 2,63CBM

Note: Fastened to the ceiling and floor. Subject to project.

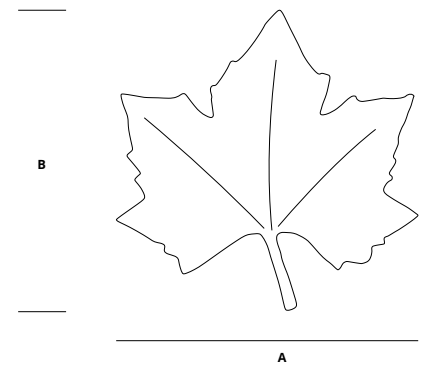


FOLIO



PD100 Medium

- A** 16cm \ 6in
- B** 17cm \ 7in
- C** 3cm \ 1in
- Δ** +/- 0,3Kg \ 0,7Lb



PD101 Big

- A** 24cm \ 9in
- B** 24cm \ 9in
- C** 3cm \ 1in
- Δ** +/- 1Kg \ 2Lb

FOLIO

TD100 Medium A

A 20cm \ 8in
B 6cm \ 2in
C 25cm-290cm \ 10in-114in
D 18cm \ 7in
A +/- 1Kg \ 2Lb

TD101 Medium B

A 21cm \ 8in
B 7cm \ 3in
C 25cm-290cm \ 10in-114in
D 19cm \ 7in
A +/- 1Kg \ 2Lb

TD102 Small

A 17cm \ 7in
B 6cm \ 2in
C 7cm-290cm \ 3in-114in
D 12cm \ 5in
A +/- 0,25Kg \ 0,6Lb

TD103 Big A

A 23cm \ 9in
B 5cm \ 2in
C 30cm-300cm \ 12in - 118in
D 24cm \ 9in
A +/- 1Kg \ 2Lb

FOLIO

TD104 Big B

A 25cm \ 10in
B 4cm \ 1,5in
C 30cm-300cm \ 12in - 118in
D 23cm \ 9in
A +/- 1Kg \ 2Lb

TD105 Medium A

A 19cm \ 7in
B 3cm \ 1in
C 30cm-300cm \ 12in-118in
D 21cm \ 8in
A +/- 0,5Kg \ 1Lb

TD106 Medium B

A 19cm \ 7in
B 4cm \ 2in
C 30cm-300cm \ 12in-118in
D 19cm \ 7in
A +/- 0,5Kg \ 1Lb

TD107 Small

A 17cm \ 5in
B 3cm \ 1in
C 30cm-300cm \ 12in-118in
D 12cm \ 6in
A +/- 0,3Kg \ 0,7Lb

All rights reserved to Serip, copyright © Serip © 2019
For all models, texts, layout and images.

Serip reserves the right to change its models without prior notice and/or the specifications thereof. Serip manufactures unique custom-made lighting sculptures and once the manufacturing is manual the pieces may differ from each other. Each piece has its own identity and therefore is unique. Each piece is labelled with a reference and certified for the country of destination.

The drawings, texts, layouts or images are the property of Serip and therefore protected by Copyright and Related Rights, as well as Industrial Property Rights and subsequent applicable current legislation. Accordingly, it is not possible to reproduce, use or exploit, in any form, date or purpose, in addition to those previously agreed upon in writing by Serip.

www.serip.com.pt



MADE IN PORTUGAL
Since 1961

Cofinanciado por:

COMPETE
2020

PORTUGAL
2020