





PORTABLE LIGHTING

JRL-9702 - p. 200



JRL-9636

30"H

Enigma Table Lamp

This table lamp features painted fabric embedded in clear composition.

Shade: (18" X 10") X (18" X 10") X 11",
White outside and inside, Linen and Paper
10" Harp



JRL-9207

31"H

Ocean Table Lamp

Printed canvas encased in clear acrylic.

Shade: (18" X 10") X (18" X 10") X 11", Cream,
Man-Made Linen

9" Harp



JRL-9635

30"H

Slated Table Lamp

This table lamp features painted fabric embedded in clear composition.

Shade: (18" X 10") X (18" X 10") X 11",
White outside and inside, Linen and Paper
10" Harp



JRL-9634

30"H

Dune Table Lamp

This table lamp features printed fabric embedded in clear composition.

Shade: (18" X 10") X (18" X 10") X 11",
White outside and inside, Linen and Paper
10" Harp





JRL-9095

33.5"H

The Ocean Table Lamp

An ocean painted on canvas is encapsulated in a block of acrylic.

Shade: (15" X 15") X (15" X 15") X 11", Off White,

Man-Made Linen

9" Harp



JRL-9208

35"H

Capiz Shell Blocks Table Lamp

Natural capiz shell is enclosed in acrylic blocks in this nature-inspired lamp.

Shade: (15" X 15") X (15" X 15") X 11", Cream,

Man-Made Linen

9" Harp



JRL-9562

31"H

Gray Stacked Marble Table Lamp

A table lamp with organic stacked gray marble on a brushed nickel base.

Shade: 18" X 18" X 11",

Cotton and Man-Made Silk, Round

9.5" Harp



JRL-9563

32.75"H

Gray Marble and Polished Nickel Table Lamp
Classic in silhouette and palette, this gorgeous gray marble table lamp is highlighted with polished nickel accents.

Shade: (19" X 10") X (19" X 10") X 12", Gray outside and White inside, Man-Made Silk,

Rectangular

10" Harp





JRL-9205

33"H

Amaranthine Table Lamp

Purple mother-of-pearl encased in acrylic with a gilded gold base.

Shade: (15" X 15") X (15" X 15") X 11", Black, Man-Made Silk

9" Harp



JRL-9084

34.5"H

Alabaster Column Table Lamp

This table lamp features an alabaster body, brass accents, and a brass base.

Shade: (18" X 9") X (18" X 9") X 10", Off White, Man-Made Silk

7.5" Harp



JRL-9198

24"H

Alabaster Horizontal Block Table Lamp

A carved block of alabaster with brass accents.

Shade: (17" X 10") X (17" X 10") X 11", White, Cotton

9" Harp



Main Bulb Interior Bulb



JRL-9196

31"H

Alabaster Block Table Lamp

This lamp has a carved white alabaster block with brass accents.

Shade: (17" X 10") X (17" X 10") X 11", White, Cotton

8" Harp



Main Bulb Interior Bulb





JRL-9569

30.75"H

Alabaster Table Lamp

A simply elegant solid alabaster table lamp.

Shade: (18" X 11") X (18" X 11") X 11", White outside and inside,
Cotton and Man-Made Silk, Rectangular

4.5" Riser, Pull Chains





JRL-9267

36"H

Alabaster Cross Table Lamp

An alabaster table lamp in a cross configuration with a bronze-finished cap and base.

Shade: 19" X 20" X 12", White, Cotton, Double Shade

9" Harp



JRL-9567

41.5"H

Coffee Bronze and White Alabaster Buffet Lamp

The timeless design of this incredibly sophisticated buffet lamp is undeniable.

Shade: (16" X 10") X (16" X 10") X 10", White outside and inside, Cotton and Man-Made Silk





JRL-8329

32"H

Caged Alabaster Discs Lamp

Three beautiful alabaster discs surrounded by polished nickel cages.

Shade: 16" X 17" X 11", Pewter, Polyester

10.5" Harp



JRL-8443

30.5"H

Alabaster Block Lamp

Natural alabaster blocks are stacked to create this beautiful lamp.

Shade: (17" X 13") X (17" X 13") X 12.5",

Smoky Taupe, Silk

11" Harp



JRL-9328

32"H

Selenite Table Lamp III

A selenite spire is mounted on a lead-free crystal base.

Shade: (16" X 10") X (18" X 10") X 10", White, Organza, Double Shade

7" Harp



JRL-9681

32.5"H

Selenite with Streams of Gold Table Lamp

A selenite log with streams of gold stands tall on a crystal base.

Shade: 16.5" X 16.5" X 10", Frosted White outside and White inside, Organza and Man-Made Silk, Round, Double Shade

8.5" Harp





JRL-9327

32"H

Selenite Table Lamp I

A massive ball of selenite creates an explosion of translucent spires. This beautiful piece is supported by a lead-free crystal base.

Shade: 19" X 20" X 12", White, Organza, Double Shade
8.5" Harp



JRL-9326

30"H

Selenite Table Lamp II

Spires of selenite create interesting angles ending on a lead-free crystal base.

Shade: 20" X 20" X 10", Off White, Cotton

9" Harp



JRL-9521

32.5"H

Celene Lamp

This table lamp features a clear selenite orb sitting upon a crystal cube.

Shade: 9" X 9" X 14", White outside and Gray inside, Organza and Man-Made Silk, Round, Double Shade

12" Nickel Harp, Line Switch



JRL-9231

29"H

Rustic Spiral Table Lamp

Composition formed in the shape of a rustic spiral.

Shade: 18.5" X 20" X 11", Taupe, Cotton
8.5" Harp



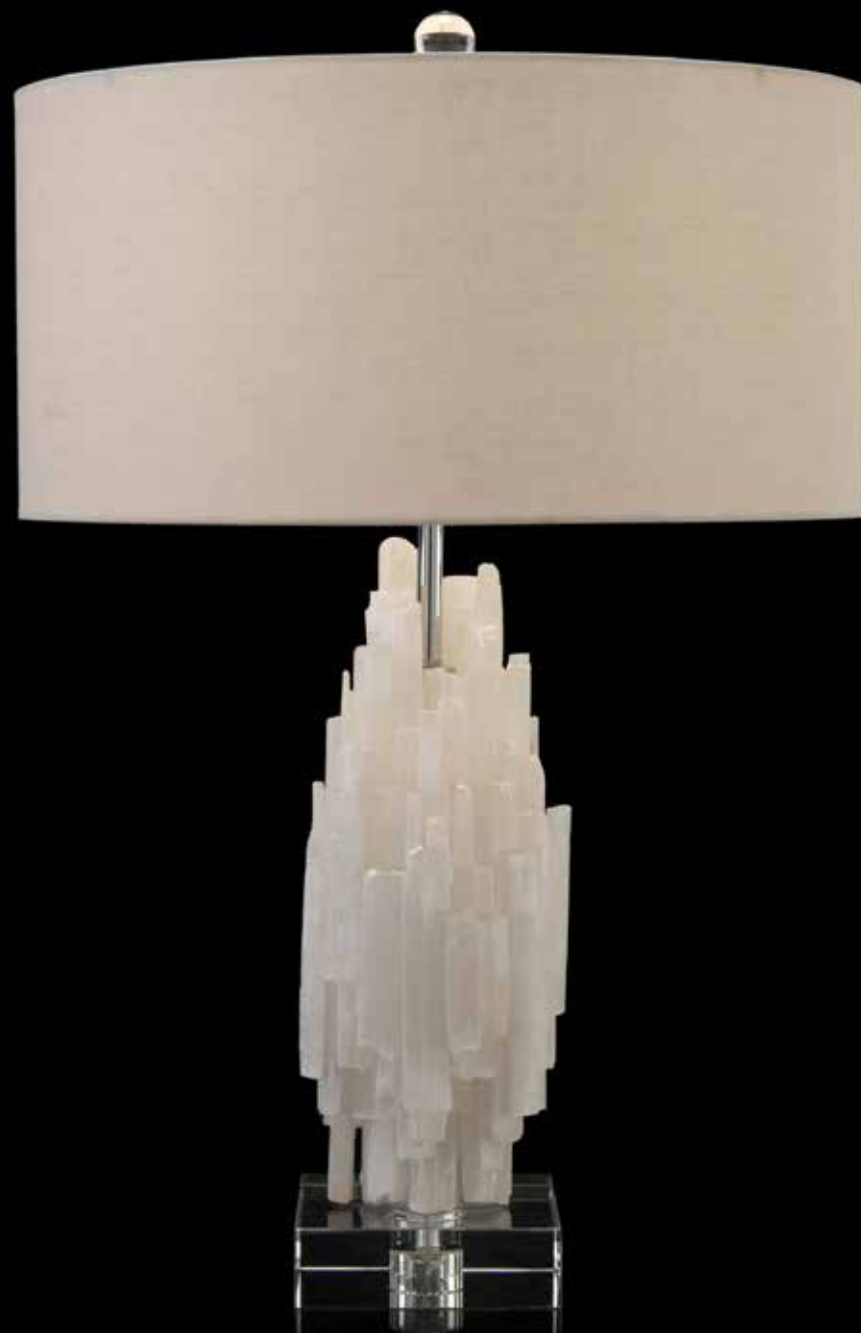
JRL-9799

33"H

Windowpane Selenite Bloom Table Lamp

A sheer double shade stands tall over a windowpane selenite bloom on a crystal base.

Shade: 9" X 9" X 14", Off White outside and inside, Organza and Man-Made Silk, Cylindrical, Double Shade
12" Harp, Line Switch



JRL-9419

31"H

Tiered Selenite Table Lamp

Translucent beauty comes alive in this unique, tiered selenite table lamp, making it ideal for any room.

Shade: 20" X 20" X 10", Off White, Man-Made Linen
8.5" Harp



JRL-9332

29.5"H

Mother-Of-Pearl Table Lamp

Mother-of-pearl encased in crystal-clear acrylic.

Shade: (18" X 10") X (18" X 10") X 11", Off White, Linen

10" Harp



JRL-9421

35"H

Illuminated Calcite Table Lamp

An illuminated, rectangular calcite table lamp on an antique brass base.

Shade: (17" X 17") X (17" X 17") X 13",

White, Cotton, Square

9.5" Harp



Main Bulb

Interior Bulb



JRL-9346

37"H

Triangular Stacked Alabaster Table Lamp

Triangular, double-stacked alabaster table lamp with a base in a coffee bronze finish.

Shade: 20" X 20" X 12", White, Cotton

9.5" Harp





JRL-9767

35.5"H

Calcite Table Lamp

Shade: (17" X 17") X (17" X 17") X 13",
White outside and inside,
Cotton and Man-Made Silk, Square
10" Harp



Main Bulb

Interior Bulb



JRL-9097

31.5"H

Retro Table Lamp

This table lamp has a retro design with
white and gold-leaf accents.

Shade: (14" X 14") X (14" X 14") X 11", White
with Gold Foil inside, Man-Made Linen

9" Harp



JRL-9445

28.5"H

Antique Brass Shade Encasing Shade Table Lamp

A table lamp with a white ceramic body and an antique brass shade encasing another shade.

Shade: 15" X 15" X 10", Off White outside and White inside, Man-Made Linen and Man-Made Silk, Round
9.5" Harp



JRL-9524

33"H

Constructive Shade Concrete Table Lamp

A nickel-plated table lamp with a concrete column body and a constructive metal shade encasing a fabric shade.

Metal Shade: 18" X 18" X 11", Nickel, Laser-Cut Metal, Round

Fabric Shade: 16" X 16" X 10.5", Off White outside and White inside, Cotton, Round

10.5" Harp



JRL-8642

31"H

Neutral Ground Table Lamp

Shade: 14.25" X 14.25" X 8", Stucco, Cotton



JRL-8726

31.5"H

Rainwater on Glass Lamp

This lamp features multicolored, crackled glass with nickel accents.

Shade: 18" X 19" X 11", Oyster, Silk, Polystyrene, Polyester

8" Harp



JRL-8457

36"H

Drip Glaze Squattie Lamp

Shade: 14" X 14" X 17", Brass, Linen, Cotton

10" Harp



JRL-8595

33.5"H

Mushroom Double-Gourd Lamp

Shade: 18" X 18" X 11", Oyster,
Silk, Polystyrene, Polyester

9" Harp



JRL-9599

37"H

White Glass Jar Table Lamp

A milky white glass jar table lamp with
accents of gold.

Shade: 20" X 20" X 12", White outside and
inside, Cotton and Man-Made Silk, Round
10.5" Harp



JRL-9608

35"H

Luminous Ginger Jar Table Lamp

A creamy white, luminous, ceramic gourd
ginger jar table lamp with bands of gold.

Shade: 18" X 18" X 12", White outside and inside,
Man-Made Linen and Man-Made Silk, Round
10.5" Harp





JRL-9558

33.5"H

Iridescent Sphere Table Lamp

A table lamp with a shimmering iridescent sphere and an exaggerated shade.

Shade: (11" X 11") X (12" X 12") X 17",

Ivory outside and inside, Cotton

12" Harp



JRL-9571

40"H

Handblown Golden Table Lamp

A snow-covered, golden opulence, handblown glass table lamp.

Shade: 15" X 15" X 16", White outside and inside, Cotton and Man-Made Silk, Round

11" Harp







JRL-9570

29.5"H

Mottled Glass Table Lamp

A mottled glass table lamp with a pearl iced finish and a brushed nickel base.

Shade: 15" X 18" X 11", White outside and inside, Cotton and Man-Made Silk, Round 9.5" Harp



JRL-9592

31.5"H

Handblown Sky Table Lamp

A table lamp with peacock blue art glass blown within glass. It features a nickel cap and base.

Shade: 18" X 18" X 11", White inside and out, Cotton and Man-Made Silk, Round 9.5" Harp



JRL-9797

31"H

Sea and Surf Table Lamp

A ceramic table lamp in a reactive glaze that is reminiscent of the sea and surf.

Shade: 16.5" X 17.5" X 13", Off White outside and White inside, Man-Made Linen and Man-Made Silk, Round 11" Harp



JRL-9782

30.25"H

Sea and Surf Porcelain Lamp

The reactive glaze replicates where the sea meets the surf creating wonderful pattern and movement on this porcelain lamp.

Shade: 19" X 20" X 12.5", Off White outside and White inside, Man-Made Silk, Round 7.5" Harp





JRL-9559

34"H

Bronze Reflections Table Lamp

A glazed bronze table lamp with hints of gold.
Shade: 20" X 20" X 11", Gray outside and White inside, Man-Made Silk and Styrene, Round 11.5" Harp



JRL-9735

39.5"H

Concrete Table Lamp

A distressed concrete gourd table lamp on a gold-leaf base.

Shade: 20" X 20" X 13", White outside and inside, Man-Made Linen and Man-Made Silk, Round 11.5" Harp



JRL-9734

34"H

Sculpted Table Lamp

A carved wave sculpture table lamp with a crystal base.

Shade: (18" X 10") X (18" X 10") X 10.5", Off White outside and White inside, Man-Made Linen and Man-Made Silk,

Rectangular

9" Harp



JRL-9593

30"H

Handblown Mottled Table Lamp

A handblown urn table lamp with a richly mottled, metallic, mirrored finish and a double shade. It features a gold base and cap.

Shade: 17" X 19" X 12", Organza and Man-Made Silk, Round, Double Shade

9.5" Harp



JRL-9289

31"H

Faux Pyrite Silver Table Lamp

A sculptural faux pyrite plated antique silver table lamp.

Shade: 18" X 18" X 11", Beige, Cotton

9.5" Harp



JRL-9137

31.5"H

Elsa Table Lamp

This lamp has a ceramic crystalized glaze in blues and pearl.

Shade: 20" X 20" X 10", Off White, Cotton

9" Harp





JRL-9360

34"H

Turquoise Ceramic Table Lamp

A glazed turquoise table lamp with open fretwork and a brass cap and base.

Shade: 18.5" X 19.5" X 11", White,
Cotton with Man-Made Silk inside

10.5" Harp



JRL-9742

32.25"H

Scalloped Jade Table Lamp

A ceramic table lamp with a scalloped column in
jade and a crystal base and cap.

Shade: 17" X 17" X 12", Off White outside and White
inside, Man-Made Linen and Man-Made Silk, Round

10.5" Harp





JRL-9698

32.5"H

Multifaceted Turquoise Table Lamp

The combination of irregular, multifaceted, turquoise-finished glass, crystal, and polished nickel creates a truly transitional table lamp. Shade: (8" X 8") X (8" X 8") X 14", White outside and inside, Man-Made Linen and Man-Made Silk, Square

11" Harp



JRL-9702

33"H

Islamorada Blue Glass Table Lamp

An Islamorada blue handblown glass table lamp with coffee bronze accents on a crystal base.

Shade: 22" X 22" X 14", White outside and inside, Organza and Man-Made Silk, Round, Double Shade





JRL-8854

31.5"H

Blue Asian Gardens Table Lamp
This Chinese blueware urn table lamp features a small neck and golden yellow blooms.

Shade: 19" X 20" X 12", White, Silk,
Double Shade

7" Harp



JRL-9141

24"H

Sweet Accent Lamp

A hand-painted and high-fired porcelain lamp.

Shade: 16" X 16" X 8", White, Cotton

7.5" Harp





JRL-9443

36.5"H

Etched Glass Geometric Table Lamp

An etched glass geometric table lamp.

Shade: 17" X 17" X 11", White outside and inside, Organza and Man-Made Silk, Round

5.5" Riser, Pull Chains



JRL-9738

37"H

Illusion Table Lamp

Stacked plates of glass create an illusion effect for this table lamp on a crystal base.

Shade: 18" X 18" X 12", Off White outside and White inside, Polyester Blend and Man-Made Silk, Round 11" Harp





JRL-9588

30.5"H

Win-Win Table Lamp

This table lamp features a crystal block, half in clear crystal and half in smoked crystal. It also has polished nickel accents and a crystal base.

Shade: (20" X 12") X (20" X 12") X 12", White outside and inside, Cotton and Man-Made Silk, Rectangular
9.5" Harp



JRL-8990

32"H

Glass Rod Table Lamp

This table lamp's three glass rods with brass bands encase a center brass rod.

Shade: 20" X 20" X 10", White, Man-Made Linen
8" Harp





JRL-9626

36"H

Nickel and Glass Table Lamp

This table lamp has polished nickel sleeves cut on the bias that hold ribbed translucent glass columns.

Shade: 18" X 18" X 11", White outside and inside,

Man-Made Linen and Styrene, Round

9" Harp



JRL-9627

36"H

Brass and Glass Table Lamp

This table lamp has antique brass sleeves cut on the bias that hold ribbed translucent glass columns.

Shade: 18" X 18" X 11", White outside and inside,

Man-Made Linen and Styrene, Round

9" Harp





JRL-9761

33.5"H

Brass and Acrylic Table Lamp

A nuts and bolts table lamp in brass and acrylic.

Shade: 14" X 14" X 12", White outside and inside,

Man-Made Linen and Man-Made Silk, Round

10" Harp





JRL-9697

41.5"H

Brass and Acrylic Console Lamp

A nuts and bolts console lamp in brass and acrylic.

Shade: 18" X 18" X 14", White outside and inside,

Man-Made Linen and Man-Made Silk, Round

11.5" Harp



JRL-9696

23.5"H

Brass and Acrylic Table Lamp

A nuts and bolts table lamp in brass and acrylic.

Shade: 13" X 13" X 9", White outside and inside,

Man-Made Linen and Man-Made Silk, Round

8" Harp



JRL-9089

29"H

The Alexander Table Lamp

This table lamp features a solid block of crystal and brass accents.

Shade: (17" X 10") X (17" X 10") X 11",

Off White, Cotton

8" Harp



JRL-9341

34"H

Illuminated Glass and Metal Table Lamp

Illuminated and frosted glass column table lamp encircled with a gold-leaf metal structure.

Shade: 17" X 17" X 12", White, Cotton

10.5" Harp



JRL-9345

34.75"H

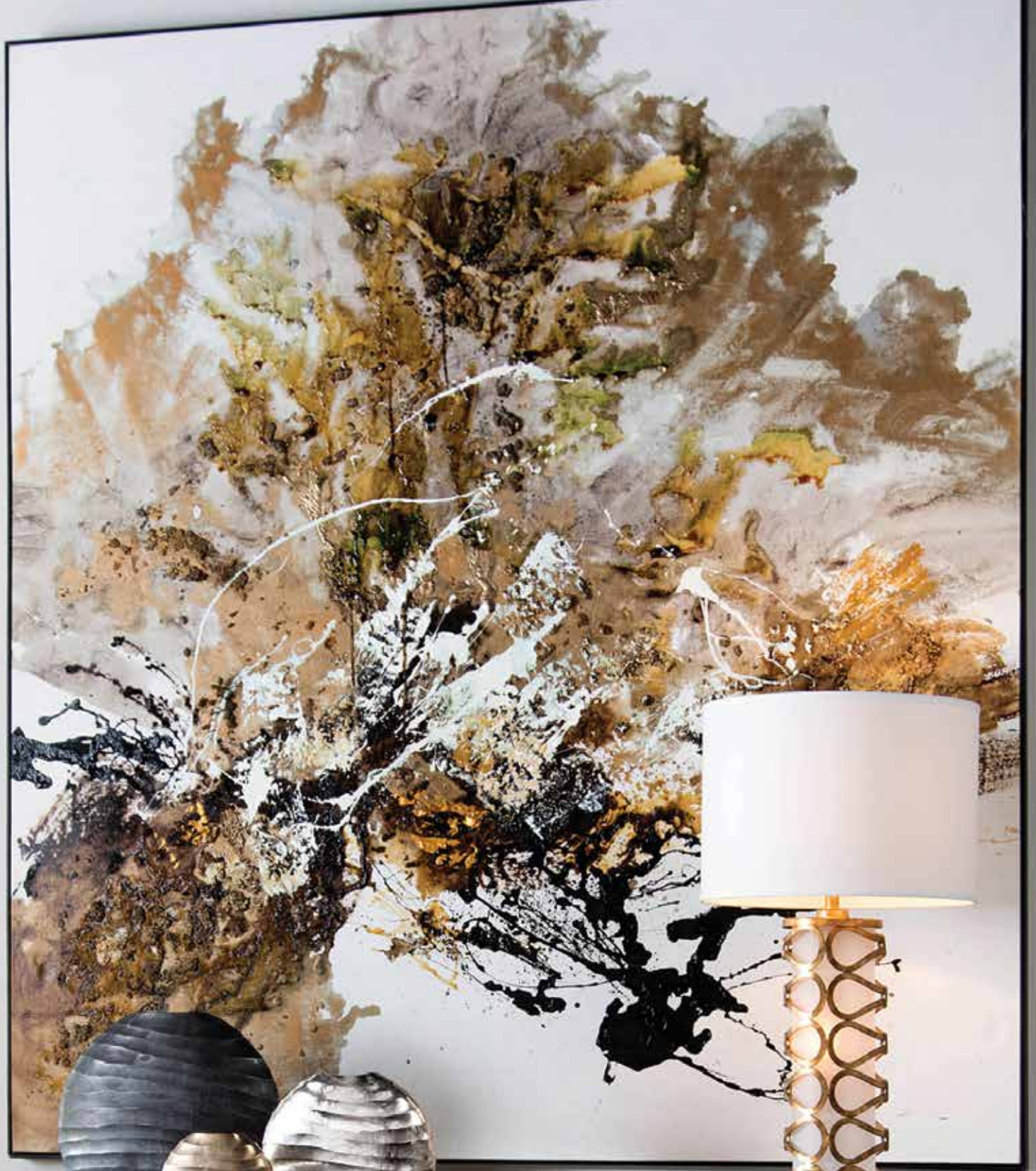
Intersecting Crystal and Nickel Table Lamp

Crystal forms with nickel accents intersect creating a right angle cross configuration.

Shade: 20" X 20" X 12", White, Cotton

9.5" Harp







JRL-8344

30"H

Sophisticated Crystal Lamp

Shade: 16.5" X 16.5" X 10", Sheer over Bronze,
Voile, Double Shade

8" Harp



JRL-8776

37"H

Crystal and Nickel Buffet Lamp

A contemporary buffet lamp with crystal and
nickel components.

Shade: 16.5" X 16.5" X 10", Sheer over Bronze,
Voile, Double Shade

7.5" Harp



JRL-9020

37.5"H

City Spire Table Lamp

This lamp features a hand-cut crystal spire
atop a crystal base.

Shade: 18" X 19" X 11", White, Man-Made Silk
8.5" Harp



A J L - 0 2 5 1

32"H

Crystal and Antique Brass Table Lamp

A tapered crystal table lamp with accents in an antique brass finish.

Shade: (13" X 13") X (13" X 13") X 9", Metallic Gold, Faux Silk, Double Shade



J R L - 8 8 0 9

35.5"H

Crystal Sophisticated Lamp

Cut-crystal candlestick lamp.

Shade: (16" X 10") X (18" X 10") X 10",

White, Silk, Organza, Double Shade

7" Harp



J R L - 8 3 7 3

40"H

Faceted Crystal in Stand Buffet Lamp

Shade: 14" X 14" X 10", Black, Silk

8" Harp



JRL-8869

35.5"H

Briolette Crystal Table Lamp

This table lamp has stunning crystal spheres in an all-over-faceted briolette pattern that are stacked in various sizes on a heavy crystal and brass base.

Shade: (14.5" X 14.5") X (16" X 16") X 10", Tan, Silk
8" Harp



JRL-9002

31.5"H

Simply Elegant Accent Lamp

Five stacked crystal ornaments interlaced with brass couplings sit atop a brass base.

Shade: (16" X 10") X (18" X 10") X 10", White, Organza, Double Shade

7.5" Harp



JRL-8872

37.5"H

Diamond Table Lamp

Cut glass and faceted glass shapes are stacked together with champagne-finished spacers to create this stunning table lamp.

Shade: 19" X 20" X 11", Ivory, Linen

Pull Chains



JRL-8878

32"H

Desert Sky Table Lamp

This table lamp features three graduated glass orbs in pale dusty blue and champagne on a champagne gilt metal base.

Shade: 15" X 16" X 11", Dusty Gray, Linen

7.5" Harp



JRL-9092

31.5"H

Star Crystal Table Lamp

A beveled, star-shaped crystal floats inside a brass ring, giving this lamp the feel of jewelry.

Shade: (16" X 10") X (16" X 10") X 11",

White, Cotton

9" Harp



JRL-9094

33"H

The Marquise Table Lamp

A faceted crystal marquise set in nickel.

Shade: 17" X 18" X 10", Oyster,

Man-Made Silk

9.5" Harp



JRL-9590

34.5"H

Twisted Glass Table Lamp

A table lamp with twisted glass and polished nickel elements.

Shade: 12" X 12" X 12", White outside and inside,
Cotton and Man-Made Silk, Round

10" Harp



JRL-9639

33"H

Stacked Crystal Table Lamp

A substantially stacked crystal table lamp.

Shade: 18" X 18" X 11", Off White outside and White
inside, Linen and Styrene, Round

9" Harp





JRL-9503

38"H

Crystal Cube Buffet Lamp

This buffet lamp features a crystal cube that is pierced askew on a silver-plated rod and base.
Shade: 10" X 10" X 11", Off White outside and White inside, Cotton and Styrene, Round
9.5" Harp



JRL-9610

33"H

Brass and Crystal Rod Table Lamp

This table lamp features antique brass sleeves cut on the bias that hold crystal rods at varying heights encircling a center stem.

Shade: 15.5" X 16" X 10", White outside and inside, Man-Made Silk and Styrene, Round
9" Harp



JRL-9540

33"H

Crystal Cube Table Lamp

A table lamp featuring two stacked crystal cubes that are pierced askew on a silver-plated rod and base.

Shade: 16" X 18" X 11", White outside and inside,
Cotton and Styrene, Round

9.5" Harp



JRL-9513

37"H

Body Illuminating Interstellar Table Lamp

A table lamp with illuminating glass columns and stainless steel accents.

Shade: (18" X 8.5") X (18" X 8.5") X 12",

White outside and inside, Man-Made Silk,
Rectangular

10" Harp, built-in LED, Rotary Button on Base





JRL-9394

40"H

Cascading Crystal Waterfall Table Lamp
Stunning strands of cascading crystals
drape from this antique silver table lamp.
Shade: 14" X 14" X 10.5", White, Cotton
8" Harp



JRL-9395

34.5"H

Cascading Crystal Waterfall Table Lamp
Stunning strands of cascading crystals
drape from this antique silver table lamp
with a white alabaster base.

Shade: 17" X 17" X 10.5", White, Cotton
8.5" Harp





JRL-8718

33"H

Circle of Light Table Lamp

This table lamp has a nickel-plated ring with faceted crystal accents that are inspired by jewelry.

Shade: (19.5" X 10") X (19.5" X 10") X 13.5",

Misty Green, Silk

11" Harp



AJL-0319

30"H

Two-Light Curly Lamp

This lamp is in a silver finish with crystal drops.

Shade: 6.75" X 6.75" X 4.5", New Oyster

White with Silver Trim, Cotton

Line Switch, Candelabra Base



AJL-0318

30"H

Two-Light Curly Lamp

This lamp is in a silver finish with crystal drops.

Shade: 6.75" X 6.75" X 4.5", New Oyster

White with Silver Trim, Cotton

Line Switch, Candelabra Base





JRL-8399

34"H

Brass Foliage with Crystal Drops Lamp
Inspired by nature, the brass curves of this lamp mimic branches, with the crystal drops acting as seeds on the branches.

Shade: 13" X 19" X 10", French Beige, Trilobal Nylon
8.5" Harp



JRL-8628

38.5"H

French Girandole Lamp

Shade: 18" X 19" X 11", Ivory, Linen
8.5" Harp



JRL-8351

39"H

Double-Arm Candelabra Lamp

Shade: 18" X 20" X 8", French Beige, Sheer
Dimmer Switch





JRL-9679

32"H

Swirling Agates in Silver Table Lamp

Agates with cool gray tones appear to create dimension and movement in this beautifully crafted table lamp.

Shade: (22" X 12") X (22" X 12") X 12", White outside and inside, Cotton and Man-Made Silk, Oval

10.5" Harp



JRL-9680

32"H

Swirling Agates in Brown and Brass Table Lamp

Agates with rich brown tones appear to create dimension and movement in this beautifully crafted brass table lamp.

Shade: (22" X 12") X (22" X 12") X 12", White outside and inside, Cotton and Man-Made Silk, Oval

10" Harp





JRL-9789

40.5"H

Branched Crystal Table Lamp

A table lamp featuring organically formed brass branches dripping with handblown glass teardrops on a crystal base.

Shade: 16.5" X 17.5" X 13", White outside and inside, Man-Made Linen and Man-Made Silk, Round 12" Harp



JRL-8979

37.5"H

Budding Crystal Table Lamp

This table lamp features cast branches with an antique gold finish and crystal buds.

Shade: (21" X 13") X (22" X 14") X 11",

Gray with Gold Spider, Silk

9" Harp



JRL-9361

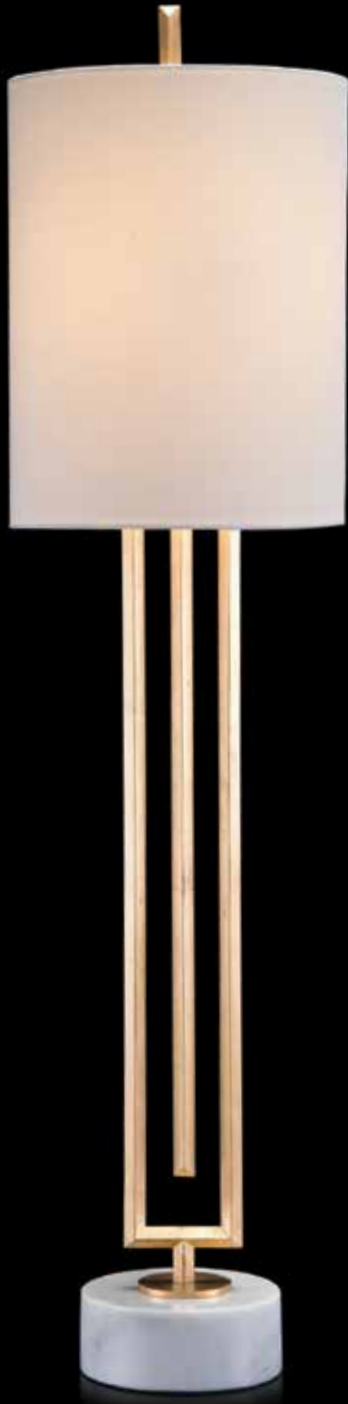
40.75"H

Labyrinth-Inspired Candlestick Lamp

Labyrinth-inspired, gold-leaf candlestick lamp with white marble base.

Shade: 10" X 10" X 13", White, Cotton with Man-Made Silk inside

10" Harp



JRL-8865

33"H

Metropolis Buffet Lamp

A contemporary brass buffet lamp featuring a sleek, center pole resting on a brass plate that is mounted on an acrylic base.

Shade: 9.25" X 9.25" X 9", Ivory, Polyester and Linen

7" Harp



JRL-8784

28"H to 37"H

Honey Brass and Alabaster Buffet Lamp
Adjustable honey brass buffet lamp with
an alabaster globe and accents.

Globe: 4.5" X 4.5" X 5.5", Alabaster
Line Switch



JRL-9711

34.25"H

Alabaster Crystal Buffet Lamp
A crystal in alabaster is held by coffee
bronze arms on a buffet lamp.

Shade: (8" X 8") X (8" X 8") X 10", Iron,
Bronze, Square

9" Harp





JRL-9603

42.5"H

Ascending Man Buffet Lamp

A man is ascending this buffet lamp that features a concrete base.

Shade: 10" X 10" X 11", Light Gray outside and White inside, Man-Made Linen and Man-Made Silk, Round

9.5" Harp



JRL-9724

37.25"H

Slag Glass Rock Console Lamp

Slagged glass rock is showcased and framed in a contemporary antique silver-leaf console lamp with a crystal base.

Shade: (6.5" X 6.5") X (6.5" X 6.5") X 8.5",

Antique Silver Leaf, Iron

Dimmer Switch





JRL-9430

38"H

Architecturally Inspired Buffet Lamp

Inspired by the architecture of building facades of the 1960s, this buffet lamp is finished in silver leaf and has a concrete base.

Metal Shade: 7" X 7" X 9.25", Silver Leaf, Steel, Round

Fabric Shade: 5" X 5" X 7", White, Man-Made Linen and Styrene, Round

Line Switch



JRL-9525

37"H

Antique Brass Shade Encasing Shade Buffet Lamp

A buffet lamp with a white ceramic body and an antique brass shade encasing another shade.

Metal Shade: 8" X 8" X 10.5", Antique Brass,

Laser-Cut Metal, Round

Fabric Shade: 6" X 6" X 10", White outside and inside,

Cotton, Round

Line Switch



JRL-9600

39.5"H

Gold Orb Buffet Lamp

A buffet lamp with a succession of gold-leaf orbs atop a concrete base.

Shade: 10" X 10" X 11", Gray outside and White inside, Man-Made Silk, Round

9" Harp



JRL-9721

37.75"H

Starlight Illumination Bronze Console Lamp
A starlight illumination, organically pierced console lamp with a layered stone base.

Shade: 7" X 7" X 10", Bronze outside and White inside, Iron and Plastic, Round
Line Switch





JRL-9248

37"H

Crystal and Brass Buffet Lamp

Natural quartz crystals are arranged to look like a starburst from the center of this brass buffet lamp. It is completed with a crystal and gold-leaf base.

Shade: 13" X 13" X 9", Cream, Cotton

7" Harp



JRL-9415

40.5"H

Orbit Buffet Lamp

Orbit buffet lamp finished in antique brass with a white marble base.

Shade: 5.5" X 7" X 13", Cream with Gold Foil inside, Man-Made Silk

11" Harp



JRL-9464

46.25"H

Brutalist Buffet Lamp

A Brutalist brass buffet lamp with a white marble base.

Shade: 13" X 13" X 14", White outside and inside, Cotton and Styrene, Round

10" Harp



JRL-9319

32"H

Starburst Table Lamp

A brass-plated starburst table lamp with a white marble base.

Shade: 16" X 16" X 8", White, Cotton

7" Harp





JRL-9793

37.25"H

Brass Orchid Candlestick Buffet Lamp

An organic orchid candlestick lamp with a black crystal base.

Shade: 14" X 14" X 10", Off White outside and White inside, Man-Made Silk, Round 9" Harp



JRL-9366

40.5"H

Blooming Pierced Orchid Table Lamp

A blooming orchid seamlessly pierces the body framed in brass.

Shade: (18" X 11") X (18" X 11") X 12", Light Gold, Man-Made Silk, Rectangular 10.5" Harp







JRL-9762

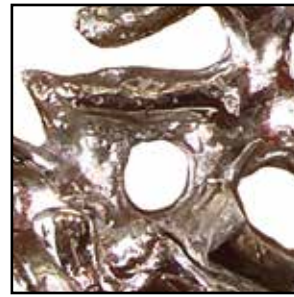
41.5"H

Brass Table Lamp

A table lamp of organic pods in antique brass on a marble base.

Shade: 9" X 9" X 9", White outside and inside, Man-Made Linen and Man-Made Silk, Round

7.5" Harp



JRL-8260

30.5"H

Silver-Plated Coral Lamp

Shade: (14" X 9") X (15" X 10") X 10.5", White, Linen

9" Harp





JRL-9602

25.5"H

Gold Tree Table Lamp

A table lamp with a canopied tree of hammered gold leaves on a concrete base.

Shade: (23" X 8") X (23" X 8") X 11", Light Gray outside and White inside, Man-Made Linen and Man-Made Silk, Rectangular

4.75" Riser, Line Switch



JRL-9732

26"H

River Rock Accent Lamp

A stacked river rock accent lamp on a concrete base.

Shade: (22" X 11") X (22" X 11") X 11", Off White outside and White inside, Man-Made Linen and Man-Made Silk, Rectangular

4" Riser, Line Switch





JRL-8590

32.5"H

Contemporary Horn Lamp

A contemporary horn sculpture table lamp in brass.

Shade: 15" X 19.5" X 11", Black, Silk

Pull Chains



JRL-9045

36"H

All Twisted Accent Lamp

This accent lamp features a hand-gilded sculpture with acrylic accents.

Shade: 16" X 16" X 10", Beige, Cotton

8" Harp



JRL-9276

32"H

Brass-Plated Table Lamp

A matte black table lamp with brass plating on the inside edge.

Shade: (22" X 9") X (22" X 9") X 8.25",

Beige, Man-Made Silk

6" Harp



JRL-9542

31.5"H

Silver Vines Table Lamp

This nickel-plated table lamp features classic silver vines on top of an acrylic base.

Shade: 15" X 19.5" X 12", White outside and inside, Man-Made Linen and Styrene, Round 9.5" Harp





JRL-9641

28"H

Acrylic Blocks Illuminating Table Lamp
Projecting bars of frosted acrylic blocks illuminate against the satin nickel rectangular column of this table lamp. Shade: 18" X 18" X 11", White outside and inside, Linen, Round 10" Harp

Main Bulb



Interior Bulb



JRL-6865

35"H

Antique Gold and Glazed Mirror Composition Lamp

Shade: 18" X 19" X 11", Beige, Silk 8.5" Harp



JRL-9101

29"H

Sarasota Table Lamp

This table lamp is a must-have piece for a beachy abode. It is designed with an acrylic panel inlaid with a glossy natural seashell. It is finished with a linen shade and a tiered acrylic pedestal base.

Shade: (17" X 9") X (17" X 9") X 10", White, Man-Made Linen

8.5" Harp



JRL-9582

31"H

Moon Mist Table Lamp

A gray marble disc suspended in polished nickel gives this lamp an artful touch of modern energy.

Shade: (19" X 10") X (19" X 10") X 12", White outside and inside, Cotton and Man-Made Silk, Rectangular

9.5" Harp





JRL-9731

32.25"H

Architectural Table Lamp

An architecturally structured table lamp with a concrete base.

Shade: (19" X 10") X (19" X 10") X 11", Oat outside and White inside, Man-Made Linen and Man-Made Silk, Oval

9" Harp



JRL-9063

36.5"H

Mirrored Blocks Buffet Lamp

Beveled mirror prism blocks form the body of this lamp with an antique distressed finish.

Shade: (7" X 7") X (7" X 7") X 14", Oatmeal, Cotton Line Switch



JRL-9251

30.5"H

Industrial Desk Lamp

An antique brass industrial desk lamp with tripod legs.

Shade: 10", Aged Brass

Line Switch



JRL-9661

39.5"H

Antique Brass Table Lamp

An antique brass table lamp with sculpted rods cut on the bias with a white marble base.

Shade: 16" X 16" X 10", Cream outside and White inside, Man-Made Linen and Man-Made Silk, Round

8.5" Harp







JRL-9614

27.5"H

Wrapped Knot Table Lamp

A table lamp with a gold-plated wrapped knot and a black marble base.

Shade: (19" X 8") X (19" X 8") X 12", Black outside and White inside, Man-Made Silk, Oval

10" Harp



JRL-9613

38"H

Wrapped Knot Buffet Lamp

A buffet lamp featuring a gold-plated wrapped knot and a black marble base.

Shade: 10" X 10" X 11", Black outside and White inside, Man-Made Linen and Man-Made Silk, Round

9.5" Harp





JRL-9615

69"H

Wrapped Knot Floor Lamp

A floor lamp with a gold-plated wrapped knot and a black marble base.

Shade: 19.5" X 19.5" X 12", Black outside and White inside, Man-Made Silk, Round 10.5" Harp



JRL-8849

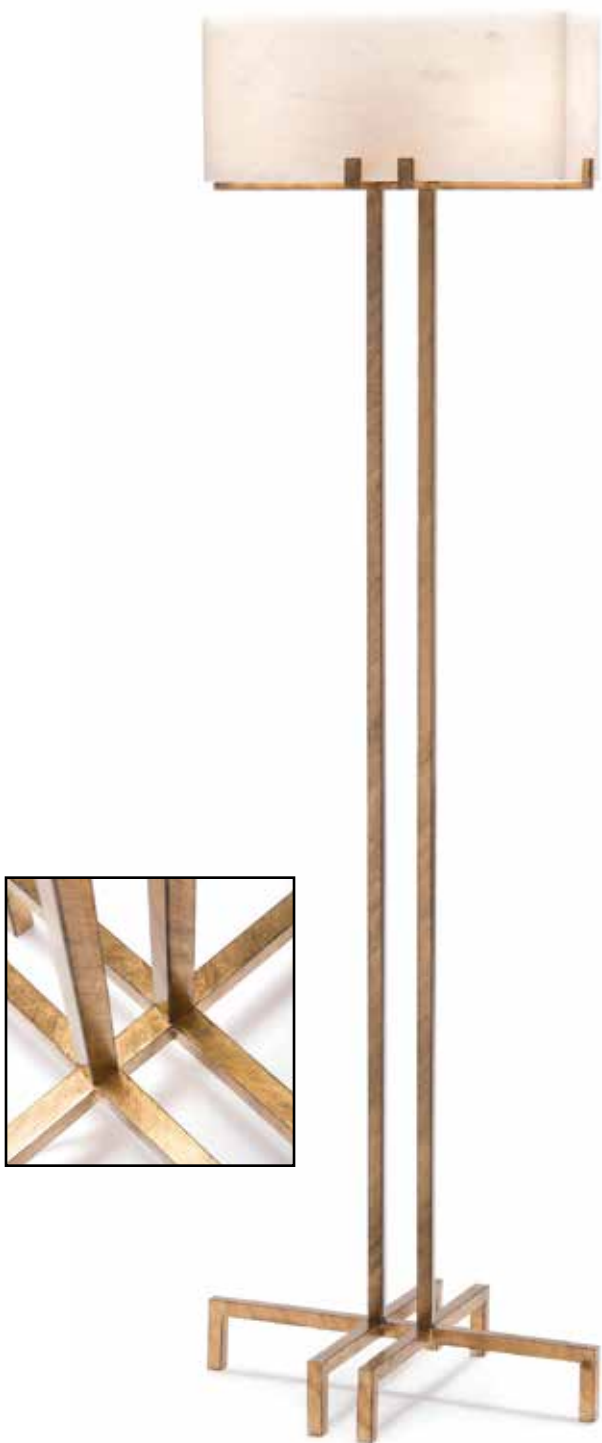
68"H

Heat-Treated Brass Floor Lamp

This lamp features brass sheets that are heat-treated to achieve a multicolored finish.

Shade: 20" X 20" X 10", Off White, Silk Pull Chains





JRL-9352

68"H

Illuminated Alabaster Shade Floor Lamp

A floor lamp with an illuminated, closed-top, alabaster shade with an antique gold-leaf, structurally angled body.

Shade: (18" X 7") X (18" X 7") X 8", White, Alabaster
Foot Switch



JRL-9757

66.5"H

Antique Brass Floor Lamp

An antique brass obelisk floor lamp.

Shade: 18.5" X 19.5" X 11", White outside and inside,
Man-Made Linen and Man-Made Silk, Round
9.5" Harp, Floor Switch





JRL-8981

74"H

Budding Crystal Floor Lamp

This floor lamp has cast branches with an antique gold finish and crystal buds. It stands atop a black marble base.

Shade: 22" X 23" X 12", Eggshell, Man-Made Linen
10" Harp



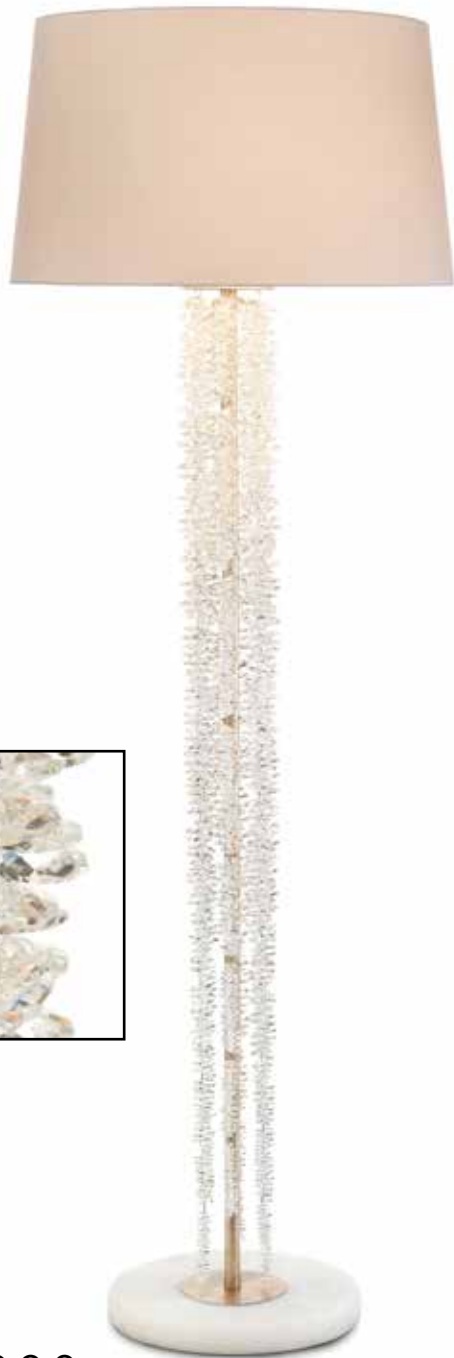
JRL-8659

80"H

Six-Light Floor Chandelier

Foot Switch





JRL-9393

73.5"H

Cascading Crystal Waterfall Floor Lamp
Stunning strands of cascading crystals drape from this antique silver floor lamp.

Shade: 21" X 24" X 14", White, Man-Made Silk
12" Harp



JRL-9353

68.5"H

Crisscross Stacked Alabaster Floor Lamp
A floor lamp with six layers of crisscross, stacked alabaster discs atop a base in a coffee bronze finish.

Shade: 21" X 21" X 12", White, Cotton
8.5" Harp





JRL-9515

66"H

Crystal Cube Floor Lamp

A floor lamp featuring a crystal cube pierced askew on a silver-plated rod and base. Shade: 19" X 20" X 11", White outside and inside, Man-Made Linen and Styrene, Round 8.5" Harp



JRL-9625

72"H

Glass and Brass Tripod Torchiere Floor Lamp

A brass-plated tripod torchiere floor lamp with stabilizing crossbars and handblown dimpled glass globes.

Globe: 6" X 6" X 8", Glass

Floor Switch





JRL-9241

67.5"H

Brass and Glass Floor Lamp

The simplistic look of this brass floor lamp with a single glass rod gives a modern twist to a Chinese-inspired design.

Shade: (20" X 10") X (20" X 10") X 12", Oat, Cotton
8" Harp



JRL-8989

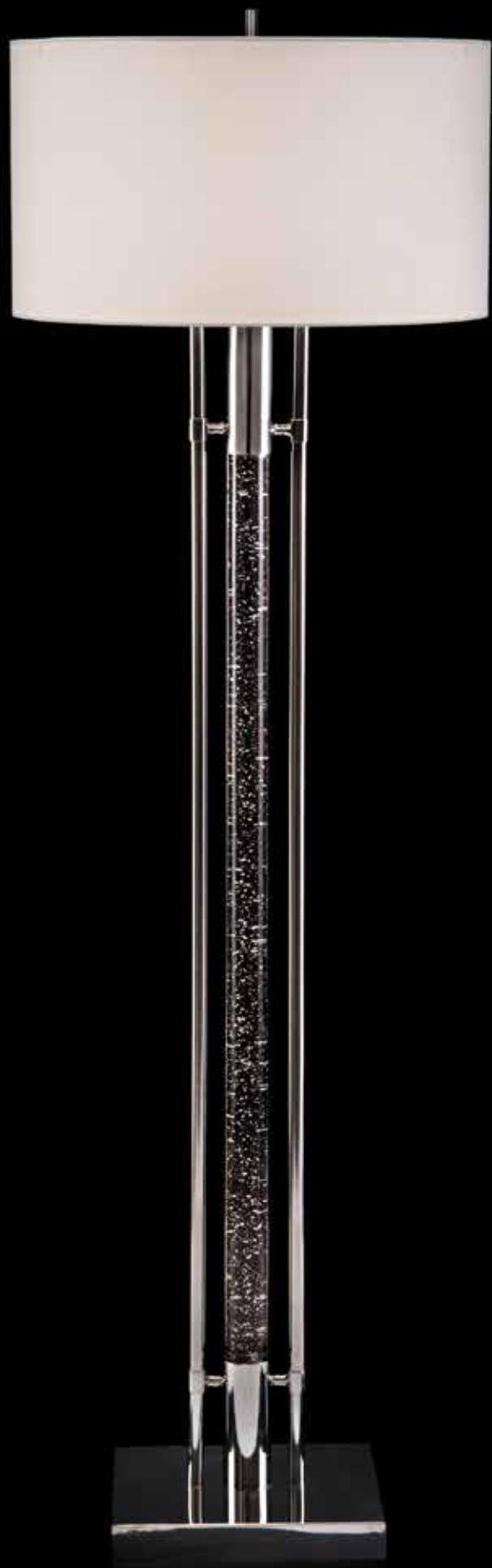
63.5"H

Glass Rod Floor Lamp

This floor lamp has a single glass rod centered between brass rods with a brass base.

Shade: 20" X 20" X 12", White, Man-Made Linen
8.5" Harp





JRL-9534

70"H

Body Illuminating Interstellar Floor Lamp

A floor lamp with an illuminating glass column and stainless steel accents.

Shade: 21" X 21" X 12", White outside and inside, Man-Made Linen and Styrene, Round 9" Harp, built-in LED, 3 Position Rotary Button



LIGHTING LEGEND

PORTABLE LIGHTING

BULB TYPES



Type A Bulb



Type B Bulb



Night-Light Bulb

SWITCH TYPES



One Way



Three Way



Four Way

MAX WATTAGE



15 Watt Max



25 Watt Max



40 Watt Max



60 Watt Max



100 Watt Max



150 Watt Max

SOCKETS



S Socket



Double Socket



Uno Socket

California



All lighting is available in California, unless otherwise noted. If a lighting product is not available in California, this symbol will be notated.

Foreign



If a lighting product is not available for foreign wiring, this symbol will be notated.

DISCLAIMERS



Due to glazing process, variations in color will occur. No two will be identical.



With handblown glass, variations in size, shape, and color may occur.



If bulb wattage is too high, discoloration will occur to the alabaster.



Selenite is a natural crystalline material, and by its sheer nature, imperfections may appear.



No replacement parts available.



Foreign wiring available only for Europe and Saudi Arabia with two-pronged plug.



Variations in shape and size are normal with natural quartz.



Maximum 15 Watt Bulb on interior socket. Use of a higher wattage bulb in interior will result in discoloration of alabaster.





FIXED LIGHTING

AJC-8980 - p. 273

AJC-9041

41"H X 38"W X 38"D

Acrylic and Brass Six-Light Chandelier

Classic form meets graphic modern design in this acrylic and antique brass, six-light chandelier.

Antique Brass Finish

Canopy: 6", Chain: 10'



AJC-9039

30"H X 30"W X 30"D

Acrylic and Brass Six-Light Chandelier

Classic form meets graphic modern design in this acrylic and antique brass, six-light chandelier.

Antique Brass Finish

Canopy: 6", Chain: 10'



AJC-9040

47"H X 38"W X 38"D

Acrylic and Brass Ten-Light Chandelier

Classic form meets graphic modern design in this acrylic and antique brass, ten-light chandelier with two tiers.

Antique Brass Finish

Canopy: 6", Chain: 10'





AJC-9042

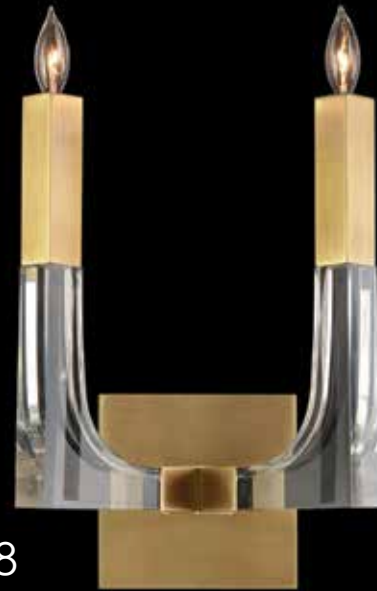
18"H X 4.5"W X 7.25"D

Acrylic and Brass Single-Light Wall Sconce

Classic form meets graphic modern design in this acrylic and antique brass, single-light wall sconce.

Antique Brass Finish

TTM: 8", Backplate: 16" X 4" X 1", Direct Wire Only



AJC-9038

15"H X 10"W X 6"D

Acrylic and Brass Two-Light Wall Sconce

Classic form meets graphic modern design in this acrylic and antique brass, two-light wall sconce.

Antique Brass Finish

TTM: 3", Backplate: 5" X 5" X 1", Direct Wire Only



AJC-9014

24"H X 37.5"D

Modern Six-Light Chandelier

A Danish modern-inspired, six-light chandelier in an antique brass finish with tapered metal candle sleeves.

Antique Brass Finish

Canopy: 5", Chain: 10'



AJC-9044

36"H X 33.5"W X 26"D

Acrylic and Brass Frame Eight-Light Chandelier
A contemporary eight-light chandelier featuring graphic frames of acrylic and brass.

Antique Brass Finish

Canopy: 5.75", Chain: 10'



AJC-9045

27"H X 16.5"W X 16.5"D

Acrylic and Brass Frame Four-Light Pendant
A four-light pendant featuring graphic frames of acrylic and brass.

Antique Brass Finish

Canopy: 5.75", Chain: 10'



AJC-8834

27"H X 24"D

Bent-Crystal Five-Light Chandelier

This chandelier has a silver-leaf finish and a bent-crystal body, with a hanging crystal finial.

Silver-Leaf Finish

Canopy: 6.75", Chain: 10'



AJC-8833

31"H X 25"D

Bent-Crystal Four-Light Chandelier

A pendant chandelier with a silver-leaf finish is surrounded by a bent-crystal body.

Silver-Leaf Finish

Canopy: 6.75", Chain: 10'



AJC-8832

41"H X 39"D

Bent-Crystal Eight-Light Chandelier

A chandelier in a silver-leaf finish with a bent-crystal body and a crystal finial.

Silver-Leaf Finish

Canopy: 6", Chain: 10'



AJC-8888

29"H X 36"D

Marquise Crystal Six-Light Chandelier

An antique silver-leaf chandelier with faceted marquise crystals.

Antique Silver-Leaf Finish

Canopy: 6", Chain: 10'



AJC-8887

18"H X 14"W X 9"D

Marquise Crystal Two-Light Wall Sconce

An antique silver-leaf wall sconce with faceted marquise crystals.

Shade: 6" X 6" X 4.5", Antique Silver Leaf, Crystal, Iron

Antique Silver-Leaf Finish

TTM: 3.5", Direct Wire Only



AJC-8886

20"H X 6"W X 9"D

Marquise Crystal One-Light Wall Sconce

An antique silver-leaf wall sconce with faceted marquise crystals.

Shade: 6" X 6" X 4.5", Antique Silver Leaf, Crystal, Iron

Antique Silver-Leaf Finish

TTM: 3.5", Direct Wire Only



AJC-8999

36"H X 33"D

Marquise Crystal Eight-Light Pendant with Fan

An eight-light pendant with a remote control fan concealed behind a facade of faceted marquise crystals.

Includes:

- remote control

Antique Silver Finish

Canopy: 4"

Dimmable, 12 Volt





AJC-8792

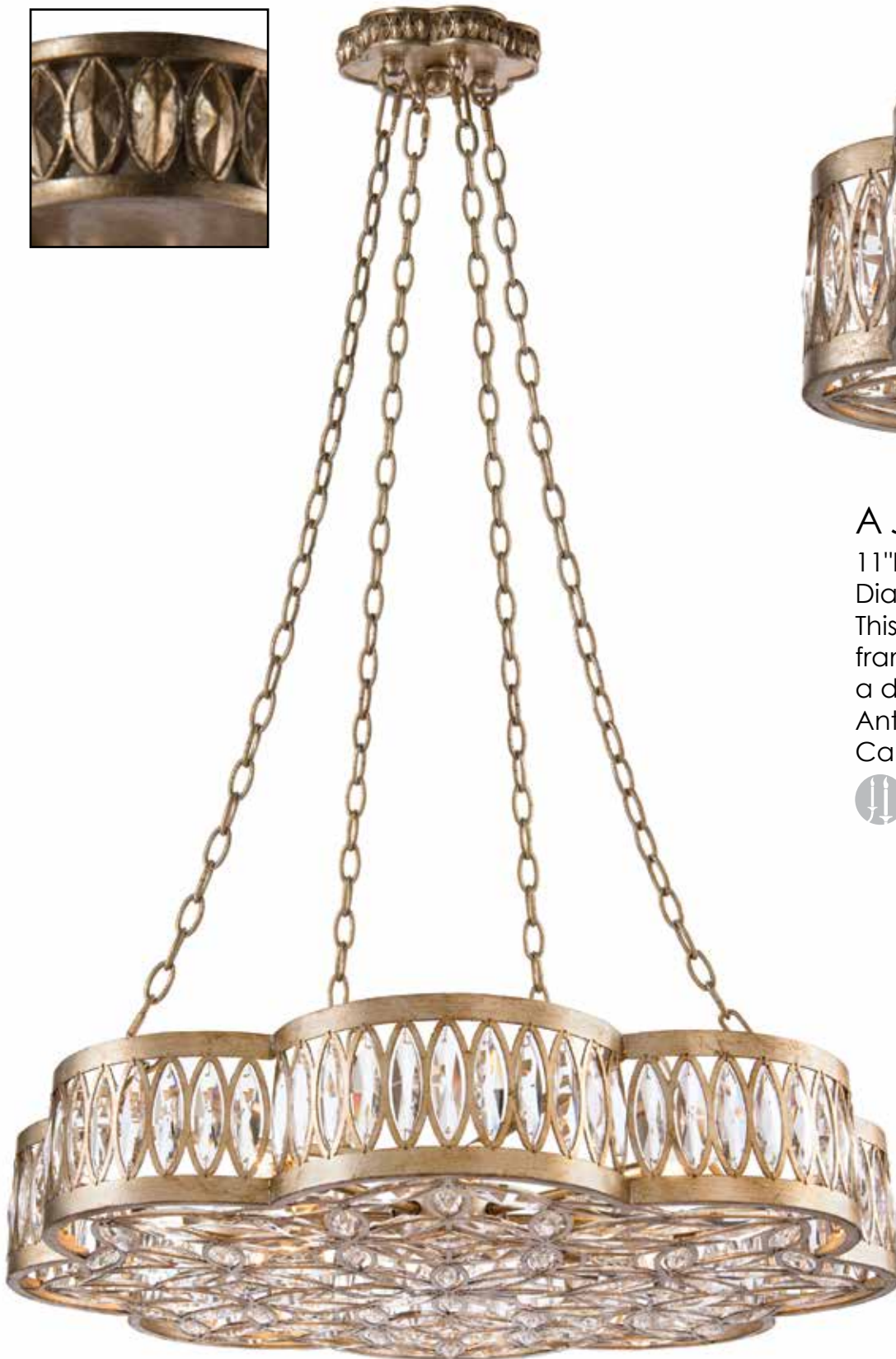
11"H X 15.5"D

Diamante Six-Light Semiflush

This semiflush combines an antique silver metal frame with rhombic faceted crystals, creating a dramatic lighting effect.

Antique Silver Finish

Canopy: 5.25"



AJC-8791

125"H X 31"D

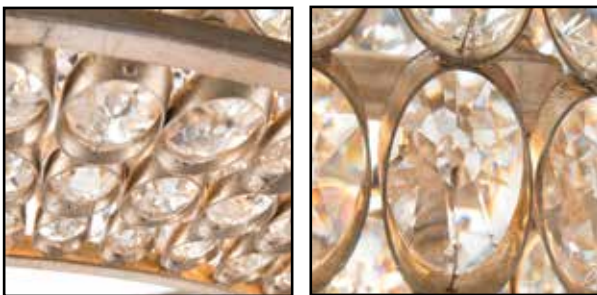
Diamante Eight-Light Chandelier

This chandelier combines an antique silver metal frame with rhombic faceted crystals, creating a dramatic lighting effect.

Antique Silver Finish

Canopy: 8"





AJC-8942

15"H X 40.25"D

Stately Crystal Silver-Leaf Pendant

A dazzling array of faceted crystals are suspended in silver-leaf metal settings cut on the bias in this stately pendant.

Champagne Finish

Canopy: 6.25", Chain: 10'



AJC-8944

15"H X 40.25"D

Stately Crystal Gold-Leaf Pendant

A dazzling array of faceted crystals are suspended in gold-leaf metal settings cut on the bias in this stately pendant.

Gold-Leaf Finish

Canopy: 6.25", Chain: 10'





AJC-8796

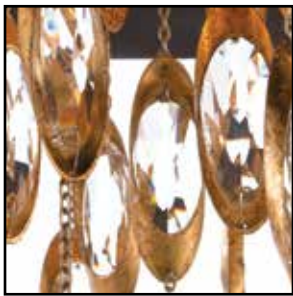
24"H X 12"W X 6.5"D

Black Tie Two-Light Sconce

This wall sconce has a tailored, rich black shade with gold trim. The faceted crystals are suspended in metal settings cut on the bias.

Shade: (12" X 6.5") X (12" X 6.5") X 5",
Black with Gold Trim, Man-Made Silk
Gold Finish

TTM: 3", Direct Wire Only



AJC-8794

27"H X 36"D

Black Tie Eleven-Light Chandelier

This pendant chandelier has a tailored, rich black shade with gold trim. The faceted crystals are suspended in metal settings cut on the bias.

Shade: 36" X 36" X 9", Black with Gold Trim,
Man-Made Silk

Gold Finish, Medium Base

Canopy: 8.25", Chain: Four pieces of 10'



Recommended 25 watt.

No foreign wire for Europe only.





AJC - 8817

41"H X 34.5"D

Counterpoint Six-Light Chandelier

This chandelier has tailored, cool white shades with champagne trim. The faceted crystals are suspended in metal settings cut on the bias.

Shade: 8.25" X 8.25" X 4.25", Cool White with Champagne Trim, Cotton

Champagne Finish

Canopy: 7.5", Chain: 10'



**Foreign wiring only available
for the United Kingdom.**



AJC - 8816

49"H X 41.5"D

Counterpoint Twelve-Light Chandelier

This twelve-light chandelier has tailored, cool white shades with champagne trim. The faceted crystals are suspended in metal settings cut on the bias.

Shade: 8.25" X 8.25" X 4.25",

Cool White with Champagne Trim, Cotton

Champagne Finish

Canopy: 7.5", Chain: 10'



**Foreign wiring only available
for the United Kingdom and Australia.**





AJC - 8856

64"H X 58"D

Counterpoint Twenty-One-Light Chandelier

This chandelier has tailored, cool white shades with champagne trim. The faceted crystals are suspended in metal settings cut on the bias.

Shade: 8" X 8" X 4", Cool White with

Champagne Trim, Linen

Champagne Finish

Canopy: 7.5", Chain: 10'



**Foreign wiring only available for
the United Kingdom, Australia,
Europe, and Saudi Arabia.**





AJC - 8815

27"H X 36"D

Counterpoint Eleven-Light Chandelier

This pendant chandelier has a cool white fabric shade. The faceted crystals are suspended in metal settings cut on the bias.

Shade: 36" X 36" X 9", Cool White, Cotton

Champagne Finish, Medium Base

Canopy: 8.25", Chain: Four pieces of 10'



Recommended 25 watt.

AJC - 8818

19"H X 12"W X 6"D

Counterpoint Two-Light Sconce

This wall sconce has a tailored, cool white shade. The faceted crystals are suspended in metal settings cut on the bias.

Shade: (12" X 6") X (12" X 6") X 5.25", Cool

White, Cotton

Champagne Finish

TTM: 3", Direct Wire Only





AJC-8884

56"H X 42.5"D

Cascading Crystal Waterfall Twelve-Light Chandelier

Stunning strands of cascading crystal waterfalls adorn this antique silver-leaf chandelier.

Shade: 6.5" X 7" X 4.25", White, Man-Made Silk

Antique Silver-Leaf Finish

Canopy: 5", Chain: 9'



AJC-8885

39"H X 43.5"D

Cascading Crystal Waterfall Six-Light Chandelier
Stunning strands of cascading crystal waterfalls
adorn this antique silver-leaf chandelier.

Shade: 6.5" X 7" X 4.25", White, Man-Made Silk

Antique Silver-Leaf Finish

Canopy: 5", Chain: 9'



**Foreign wiring only available for
the United Kingdom, Europe,
and Saudi Arabia.**



AJC-8879

21"H X 13"W X 6.5"D

Cascading Crystal Waterfall One-Light Sconce
Stunning strands of cascading crystals drape
from this antique silver-leaf sconce.

Shade: (13" X 6.5") X (13" X 6.5") X 6",

White, Man-Made Silk

Antique Silver-Leaf Finish

TTM: 2.5", Direct Wire Only



AJC-8880

14"H X 7"W X 7"D

Cascading Crystal Waterfall One-Light Wall Sconce
A stunning strand of cascading crystals drape
from this antique silver-leaf wall sconce.

Shade: 6.5" X 7" X 4.25", White, Man-Made Silk

Antique Silver-Leaf Finish

TTM: 2.75", Backplate: 5" X 5" X 1", Direct Wire Only



AJC-8849

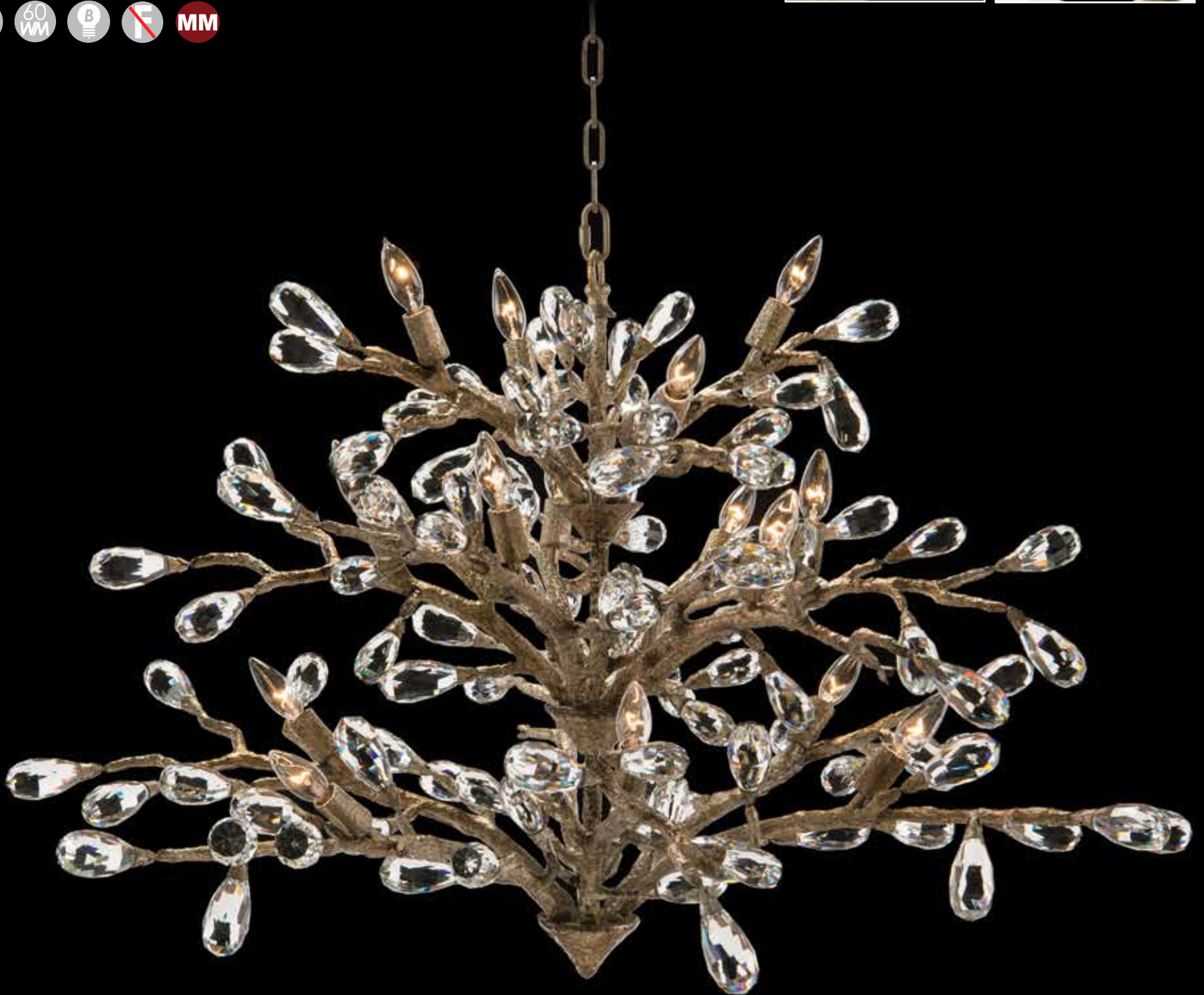
27"H X 47"D

Budding Crystal Sixteen-Light Chandelier

The three-tiered, organic, branchlike arms of this chandelier are finished in an antique silver patina.

Antique Silver Patina Finish

Canopy: 7", Chain: 10'



AJC-8850

19"H X 39"D

Budding Crystal Ten-Light Chandelier

The two-tiered, organic, branchlike arms of this chandelier are finished in an antique silver patina.

Antique Silver Patina Finish

Canopy: 7", Chain: 10'



AJC-8851

19"H X 15"W X 7"D

Budding Crystal One-Light Sconce

The organic, branchlike arms of this sconce are finished in an antique silver patina.

Antique Silver Patina Finish

TTM: 13", Direct Wire Only



AJC-9057

72.5"H X 56"D

Branched Crystal Twenty-Light Chandelier
Organically formed brass branches drip from this three-tiered, twenty-light chandelier with handblown glass teardrops.

Includes:

- six 5' cables
- six 16" connecting chains
- nine 8" glass teardrops
- seven 9.5" glass teardrops
- four 16.5" glass teardrops

Brass Finish

Canopy: 6"





AJC-8980

71"H X 51"D

Brass and Glass Teardrop Eight-Light Chandelier

An eight-light halo of organically formed brass branches dripping with handblown glass teardrops.

Brass Finish

Canopy: 6", Cable Length: 59", adjustable.



AJC-8982

82"H X 60"W X 19"D

Brass and Glass Teardrop Nine-Light Chandelier

A nine-light chandelier of organically formed brass branches dripping with handblown glass teardrops.

Includes:

- 34 glass teardrops at 12" each
- 21 glass teardrops at 16" each
- three adjustable 5' cables

Brass Finish

Canopy: 8" X 5" X 1"





AJC-8983

29"H X 23"W X 9"D

Brass and Glass Teardrop Two-Light Wall Sconce

A two-light wall sconce with organically formed brass branches dripping with handblown glass teardrops.

Brass Finish

TTM: 4", Backplate: 8" X 4.5" X 1", Direct Wire Only



AJC-8981

34"H X 32"D

Brass and Glass Teardrop Seven-Light Chandelier

A seven-light chandelier of organically formed brass branches dripping with handblown glass teardrops.

Includes:

- one 6" extension rod
- three 12" extension rods

Brass Finish

Canopy: 6"





AJC-9026

26"H X 39"D

Crystal Chain Thirteen-Light Pendant

Links of crystal form interlocking chains on this tiered, thirteen-light pendant.

Includes:

- one 6" extension rod
- three 12" extension rods

Gold-Leaf Finish

Canopy: 6"



AJC-9007

33.5"H X 39"D

Crystal Icicle Eighteen-Light Pendant

An eighteen-light pendant with three tiers of dripping crystal icicles.

Includes:

- three 12" extension rods

Gold-Leaf Finish

Canopy: 6"





AJC-8910

32.75"H X 40"D

Polished Nickel and Crystal Sphere Chandelier

A contemporary, three-light, polished nickel chandelier with a polished, floating crystal sphere.

Shade: 40" X 40" X 10", White, Man-Made Silk

Polished Nickel Finish

Canopy: 6", Nickel, Chain: 8'



AJC-8918

14.5"H X 6.75"W X 8"D

Crystal Cone Sconce

Sconce with conical-cut crystal.

Shade: 6.75" X 6.75" X 5", White, Man-Made Silk

Silver-Plated Finish

TTM: 2.75", Backplate: 5.5" X 5" X 3.5",

Direct Wire Only



AJC-8455

35"H X 40"D

Lombard Eight-Light Chandelier

Shade: 40" X 40" X 12", New Oyster White, Linen
Silver Finish with Glass Accents

Canopy: 5", Chain: 10'

Direct Wire Only



AJC-8458

21"H X 7"W X 7"D

Lombard One-Light Sconce
(on the left)

AJC-8459

21"H X 7"W X 7"D

Lombard One-Light Sconce
(on the right)

AJC-8458 / AJC-8459

Shade: 7" X 7" X 4.5", New Oyster White with Silver Trim, Linen
Silver Finish with Glass Accents

TTM: 17", Backplate: 4.5" X 4.5", Direct Wire Only



AJC-8828

24"H X 40"D

Glass Rod Six-Light Chandelier

A chandelier with glass rods supported by brass fittings.

Shade: 8" X 8" X 5", Beige, Cotton

Brass Finish

Canopy: 6", Chain: 10'



AJC-8831

14"H X 12"W X 8.5"D

Glass Rod Two-Light Wall Sconce

A wall sconce with glass rods supported by brass fittings.

Shade: (11" X 6") X (12" X 7") X 6", Beige, Cotton

Brass Finish

TTM: 9", Backplate: 7.5" X 4.5", Direct Wire Only





AJC-8891

18"H X 42"D

Ribbons of Gold Pendant

Ribbons of gold-leaf metal bands encircle this twelve-light pendant.

Shade: 38" X 38" X 9.5", Off White, Cotton

Aged Gold-Leaf Finish

Canopy: 6.25", Chain: 10'



AJC-9021

22"H X 42.5"D

Ribbons of Gold

Twelve-Light Pendant with Fan

Ribbons of gold encircle this twelve-light pendant with a remote control fan.

Shade: 40.5" X 40.5" X 7", Off White, Cotton

Includes:

- remote control
- 12 LED Bulbs

Aged Gold-Leaf Finish

Canopy: 7"

LED Bulb, 12 Volt





AJC-8873

30"H X 39"D

Natural Selenite Eight-Light Chandelier

Natural selenite crystal wands make up the stunning illuminated shades of this silver-leaf chandelier.

Shade: 4.5" X 4.5" X 12.5", White, Selenite

Silver-Leaf Finish

Canopy: 5.5", Chain: 13'



AJC-8875

15.5"H X 6"D

Natural Selenite Pendant

Natural selenite crystal wands make up the stunning illuminated shade of this silver-leaf pendant.

Shade: 6" X 6" X 15.5", White, Selenite

Silver-Leaf Finish

Canopy: 5.5", Chain: 13'



AJC-8872

20"H X 11.5"W X 7"D

Natural Selenite Two-Light Wall Sconce

Natural selenite crystal wands make up the stunning illuminated shades of this silver-leaf sconce.

Shade: 4.5" X 4.5" X 12.5", White, Selenite
Silver-Leaf Finish

TTM: 6", Backplate: 11.5" X 4.75" X 1", Direct Wire Only



AJC-8871

20"H X 4.75"W X 7"D

Natural Selenite Single-Light Wall Sconce

Natural selenite crystal wands make up the stunning illuminated shade of this silver-leaf sconce.

Shade: 4.5" X 4.5" X 12.5", White, Selenite
Silver-Leaf Finish

TTM: 6", Backplate: 11.5" X 4.75" X 1", Direct Wire Only



Disclaimer: Selenite is a natural crystalline material with wide decorative appeal. By its sheer nature, imperfections such as other mineral deposits, which may appear as colored sections or varying crystalline structure, are not only expected, but indeed add to the beauty of the piece. The softness of selenite may result in separation of sections of crystal, which can be reattached with the use of a clear adhesive.



AJC-8985

26"H X 60"W X 30.5"D

Calcite Panel Twenty-Light Pendant

A twenty-light, Art Deco-inspired pendant with calcite panels framed in gold leaf.

Includes:

- two 6" extension rods
- six 12" extension rods

Gold-Leaf Finish

Canopy: 16" X 5" X 1"



AJC-8984

9"H X 20"D

Calcite Panel Six-Light Semiflush

A six-light, Art Deco-inspired semiflush featuring calcite panels framed in gold leaf.

Gold-Leaf Finish

Canopy: 6"





AJC-8987

14.5"H X 10"W X 4.5"D

Calcite Panel Two-Light Wall Sconce

A two-light, Art Deco-inspired wall sconce with calcite panels framed in gold leaf.

Gold-Leaf Finish

TTM: 4.5", Backplate: 10.75" X 5.25" X 1", Direct Wire Only



AJC-8986

60"H X 7.5"D

Calcite Panel One-Light Pendant

A one-light, Art Deco-inspired pendant with calcite panels framed in gold leaf.

Includes:

- one 6" extension rod
- three 12" extension rods

Gold-Leaf Finish

Canopy: 6"





AJC-8644

27"H X 27"D

Hotel Warwick Six-Light Pendant

Shade: 27" X 27" X 11", Sheer Metallic, Sheer Voile

Champagne Gilded Finish

Canopy: 6.25", Chain: 10'



AJC-8679

50"H X 38"D

Paris Eight-Light Chandelier

This chandelier is finished in gold leaf and has amber crystal beading over the entire body, as well as amber glass and crystal accents.

Gold-Leaf Finish

Canopy: 6.5", Chain: 10'



AJC-8680

34"H X 34"D

Paris Eight-Light Chandelier

This chandelier is finished in gold leaf and has amber crystal beading over the entire body, as well as amber glass and crystal accents.

Gold-Leaf Finish

Canopy: 6.5", Chain: 10'



AJC-8682

19"H X 13"W X 7"D

Paris Two-Light Sconce

This sconce is finished in gold leaf and features amber crystal beading over the body.

Gold-Leaf Finish

TTM: 12", Backplate: 8.75" X 4.75", Direct Wire Only



AJC-8743

36"H X 40"D

Antique Parisian Silver Nine-Light Chandelier

Shade: 40" X 40" X 15.75", Champagne, Sheer Voile

Antique Parisian Silver Finish

Canopy: 6", Chain: 10'



AJC-8877

48"H X 37.5"D

Gold-Leaf and Crystal Chandelier

A graceful eight-light chandelier in a gold-leaf finish that has tapered candles and is adorned with polished, smooth crystal drops.

Gold-Leaf Finish

Canopy: 5", Chain: 13'





AJC-8925

35"H X 42.5"D

Mid-Century Sixteen-Light Chandelier

Mid-century sixteen-light chandelier in black and antique brass.

Black and Antique Brass Finish

Canopy: 6", Chain: 10'



AJC-9015

24"H X 40"W X 26"D

Starburst Pendant

An antique brass starburst pendant.

Antique Brass Finish

Canopy: 5", Chain: 10'



AJC-8772

38"H X 50"D

Sixteen-Light Halogen Chandelier

This chandelier is finished in antique gold and has polished rock crystals that look like blooming flower buds.

Includes:

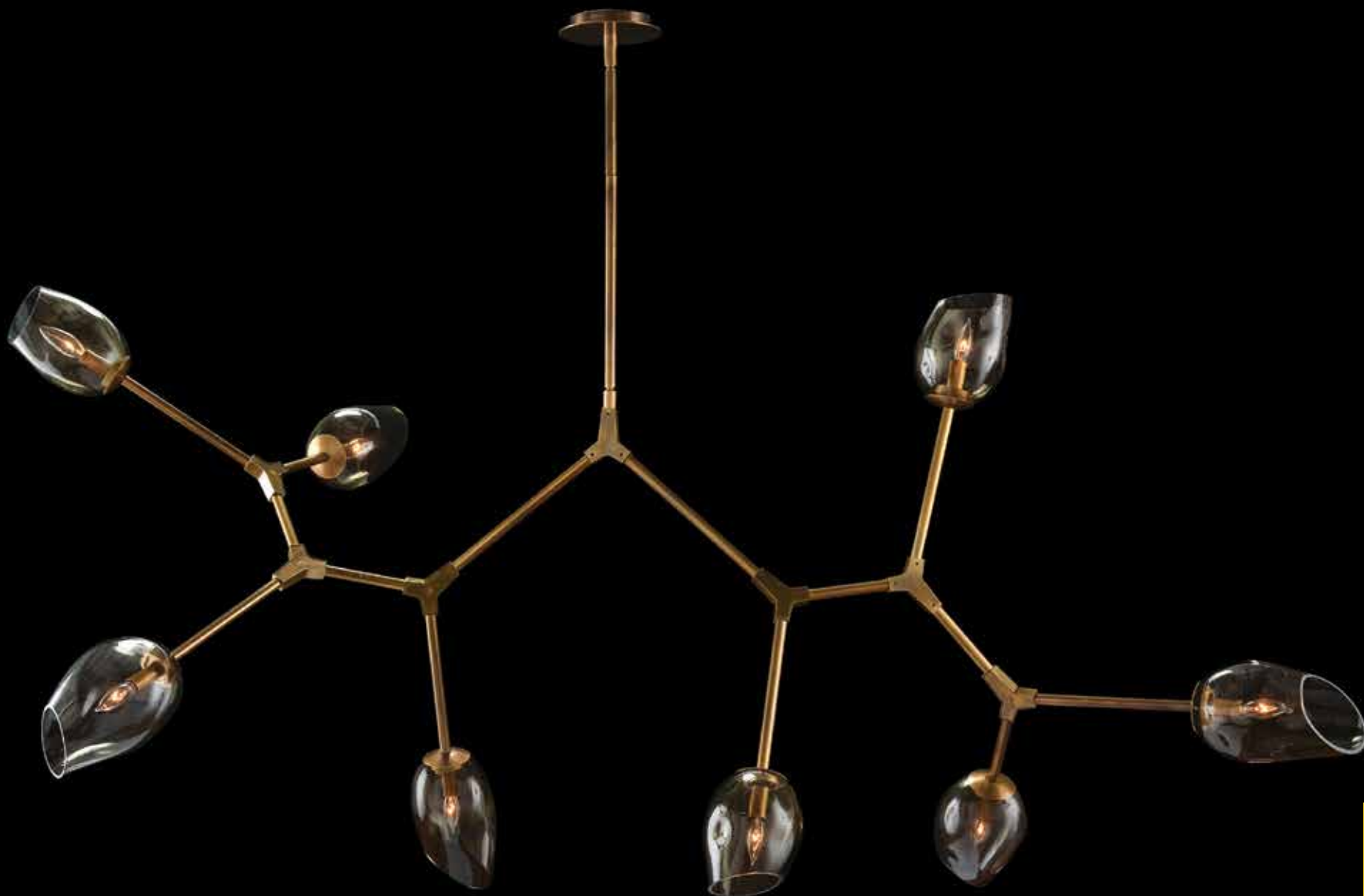
- Sixteen 10 watt halogen bulbs

Antique Gold Finish

Canopy: 7", Chain: 10'

10 watt halogen, 12 Volt





AJC-9064

63"H X 56"W X 48"D

Eight-Arm Asymmetrical Chandelier with Glass Shades

Eight smoked, irregular-formed, handblown glass shades adorn the asymmetrical, adjustable arms of this antique brass chandelier.

Globe: 2.25" X 2.25" X 7.5", Glass

Includes:

- one 6" extension rod
- one 12" extension rod

Antique Brass Finish

Canopy: 6"



AJC-9022

30"H X 36"D

Ribbons of Silver Eight-Light Pendant with Fan

Ribbons of silver encase this eight-light pendant with a remote control fan.

Includes:

- eight pieces of 15.5" decorative chain
- remote control
- 8 LED Bulbs

Silver-Leaf Finish

Canopy: 7"

LED Bulb, Dimmable, 12 Volt



AJC-8824

12"H X 25"D

Beaded Crystal Six-Light Semiflush

A transitional, antique silver semiflush with hand-beaded crystals.

Antique Silver Finish

Canopy: 5"





AJC-8955

26"H X 38"D

Sculptural Alabaster and Brass Six-Light Chandelier

A modern and sculptural six-light chandelier with alabaster arms and body and a coffee bronze finish.

Coffee Bronze Finish

Canopy: 6", Chain: 10'



AJC-8878

40"H X 39"D

Agate Sliced Chandelier

Organic crystal agate slices create the body of this exquisite, three-tiered chandelier in a gold-leaf finish.

Gold-Leaf Finish

Canopy: 5", Chain: 12'



Foreign wiring only available for the United Kingdom.





AJC-8740

61"H X 19"W X 12"D

Three-Light Wall Sconce

This sconce is made of solid brass that is designed to look like banded reeds.

Shade: (15.5" X 8.5") X (19" X 8.5") X 8",

Natural Eggshell, Silk, Linen

Honey Brass Finish

TTM: 27", Direct Wire Only



AJC-8742

38"H X 16"W X 8"D

Two-Light Wall Sconce

Shade: (16" X 7") X (16" X 7") X 9", Off White, Linen

Antique Venetian Silver Finish

TTM: 5.25", Direct Wire Only



Foreign wiring only available for Australia and Europe.





AJC-9023

24.5"H X 5"D

Handblown Glass Hanging Pendant
A hanging pendant with rippled, handblown glass, brushed nickel accents, and a vintage Edison bulb.

Includes:

- 10' adjustable cord
- T9 Long Spiral Edison Bulb

Brushed Nickel Finish

Canopy: 7"



AJC-8315

34"H X 12"W X 8"D

Isabella Two-Light Sconce

Shade: 4.5" X 4.5" X 4.5", French Beige, Silk

Antique Brass Finish

TTM: 19", Direct Wire Only

