



John-Richard

ACCENT YOUR WORLD WITH LUXURIOUS POSSIBILITIES.



PORTABLE LAMPS
Supplement B





JRL-8175 / 29.5"H
Brass Sea Fern and Shell Lamp
See page 58.





John-Richard

ACCENT YOUR WORLD WITH LUXURIOUS POSSIBILITIES.

PORTABLE LAMPS
SUPPLEMENT - B

*506 Eastman
Greenwood, Mississippi 38950 USA*

*662.453.5809 phone 662.453.5680 fax
www.johnrichard.com*

A History

In 1980, John-Richard was formed as a sideline business to one of the largest retail furniture operations in Mississippi. Wall décor was the company's first product line featuring 58 prints that were primarily hand-colored engravings. The original company, whose name was drawn from the middle names of the original partners, employed five people and operated out of a 10,000-square-foot warehouse.

Ten years later on August 25, a fire destroyed the factory along with all of the October market samples and a new line of lighting. Working out of a space one-fourth of the original size, John-Richard rebuilt its operation and now encompasses a 275,000-square-foot manufacturing facility, a 900,000-square-foot warehouse in Mississippi, and a new manufacturing facility in Vietnam. In addition to the Greenwood facility, John-Richard has offices in India, China, Indonesia and the Philippines with more than 700 employees.

A new direction for John-Richard began to take shape when Alex Malouf became the owner in 1987. One of the original partners, Malouf's desire was to create the country's finest producer of framed art. John-Richard expanded to lighting in 1990, mirrors in 1992, accessories in 1992, accent furniture in 1995 and soft goods in 1999. Today, John-Richard has the largest scope of products of any home accent manufacturer in the United States.

The success of the company is based on Malouf's commitment to a strong design vision. John-Richard's team of designers travels the globe to create luxurious and functional home furnishings.

Exquisite, sophisticated designs are the heart of John-Richard. Focused on unique details and finishes, John-Richard is committed to delivering a new interpretation of both contemporary and classic styles. While our products draw inspiration from many sources, it is the details such as delicate beading, sumptuous fabrics, hand-painted finishes or the perfect simple form of today's contemporary aesthetic that create what has become the John-Richard style.

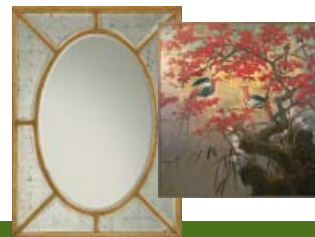
John-Richard's collection of furniture, wall art, lighting, mirrors, botanicals and accessories is crafted for quality and styled for distinction. Accent your world with the luxurious possibilities of John-Richard.



FURNITURE



LIGHTING



MIRRORS & WALL ART



ACCESSORIES



BOTANICALS

John-Richard Lighting

Light up your interiors with the sophisticated design and superior craftsmanship of John-Richard. Experience our wonderland of lighting options. Sparkling crystal, hand-painted finishes, stunning shades and wonderful designs are only a few of the characteristics that make John-Richard lighting unique.

John-Richard's selection of portable lighting is highlighted by beautiful artistry and timeless sophistication. From delicate hand-painted porcelain to impressive brass and crystal designs, the collection offers a wide range of artistic pieces that are the perfect complement to any décor.

John-Richard's portable lighting is not only a source of light, but also of art and inspiration.

Design is the heart of John-Richard, and our elegant collections illustrate the John-Richard difference — superior craftsmanship, exquisite design, definitive luxury, unsurpassed quality, and exceptional value.

At John-Richard, today's stunning selection of new designs becomes tomorrow's cherished family treasures.

Our designers develop concepts that are beautiful yet functional in today's home. Our selection of home furnishings is perfect for all décors from the grandest estate to a suburban family home or an urban townhouse.

John-Richard designers travel the globe for inspiration to create and interpret our own unique lines of furniture, lighting, wall art, mirrors, accessories and botanicals. Our creations are expertly crafted by artisans to make a lasting impression of quality and style.

Discover and experience John-Richard's wide array of collections that create a single resource for luxury home furnishings. An experience in luxury like no other.

Turn the page, and let the John-Richard experience begin...





JRL-8128 / 34.5"H

Moroccan Majesty Lamp

Shade / 12.5" x 20.5" x 11.5" / Pleated Gold

Three Way, 150 Watts Max, Type A Bulb,

9" Harp

Disclaimer: Due To The Hand-Crafted Nature Of The Piece, Variations In Finish And Glaze May Occur.

JRL-8106



JRL-8106 / 27.75"H

Gecko and Tortoise Lamp

Shade / 8" x 16" x 12" /

Beige with Hand-Finished Trim

Three Way, 150 Watts Max, Type A Bulb,
10" Harp

JRL-8153 / 27.75"H

Acid Etched Ovid Lamp

Shade / (11.75" x 9") x (22" x 15") x 12" /

Charcoal

Three Way, 150 Watts Max, Type A Bulb,
9.5" Harp



JRL-8153



JRL-8140 / 34.5"H
Pleasant Paisley Lamp
Shade / 10" x 22" x 12.5" /
Pleated Cream with Taupe Piping
Three Way, 150 Watts Max,
Type A Bulb, 11" Harp



JRL-8072 / 34"H

Glazed Earthenware Lamp in Muted Tones

Shade / 12" x 20" x 13" / Beige Linen

Three Way, 150 Watts Max, Type A Bulb,
10.5" Harp



JRL-8070



JRL-8070 / 37.5"H

Ancient Olive and Ginger Overscale Lamp
Shade / 12" x 22.5" x 15" / Natural Linen
Three Way, 150 Watts Max, Type A Bulb,
11.5" Harp

JRL-8121 / 31"H

Ocean Bottom Glazed Porcelain Lamp
Shade / 7.5" x 23" x 11.5" /
Parchment Pleated Linen
Three Way, 150 Watts Max, Type A Bulb,
10" Harp

*Disclaimer: Due To The Glazing Process, Variations
May Occur.*



JRL-8121



JRL-8029



JRL-8029 / 36"H

Earthenware Vase with Wrapped Neck Lamp Shade / 12" x 19" x 12" / Brass Linen Three Way, 150 Watts Max, Type A Bulb, 7.5" Harp



JRL-8114 / 32"H

Celadon and Ochre With Red Porcelain Lamp Shade / 12" x 19" x 13" / Beige With Gold Trim Three-Way, 150 Watt Max, Type A Bulb 8.5" Harp

JRL-8114





JRL-8014 / 32"H

Classic Urn Lamp with Cognac Finish
Shade / 15" x 17" x 10" /

Hand-Painted on French Beige

One Way, 60 Watts Max, Type A Bulb,
6.5" Harp





JRL-8120 / 42"H

Burnished Copper Urn on a Pedestal

Shade / 16" x 18" x 14" /

Dark Beige with Metal Gallery

Three Way, 150 Watts Max, Type A Bulb,

11.5" Harp



JRL-8023 / 32.5"H

Fluted Tuscan Cream Urn Lamp

Shade / 8" x 22" x 13" /

Hand-Finished Black with White Interior

Three Way, 150 Watts Max, Type A Bulb,

9.5" Harp

JRL-8135



JRL-8135 / 34"H

Classical Elegance Lamp

Shade / 13" x 19" x 13" / Cream

Three Way, 150 Watts Max, Type A Bulb,
11.5" Harp



JRL-8031 / 28.5"H

Burnished Ebony Tuscan Urn Lamp

Shade / 9" x 18" x 11" / Painted Shade

Three Way, 150 Watts Max, Type A Bulb,
9" Harp

*Disclaimer: Hand-Carved And Finished Wood Lamp.
Variations In Carving And Finish May Occur.*



JRL-8031



TABLE LAMPS

B-16

JRL-7996 / 35"H
Fluted Gold Leaf Table Lamp with Handles
Shade / (12" x 4") x (20" x 12") x 11.5" /
Beige with Tan Trim
Three Way, 150 Watts Max, Type A Bulb,
8" Harp

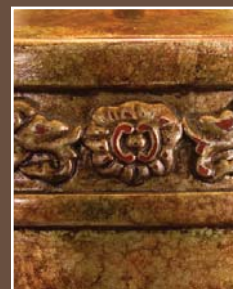


JRL-7996



JRL-8016

JRL-8016 / 37.5"H
Hand-Painted Tuscan Urn Lamp
Shade / 12" x 20" x 13" / Metallic Gold
Three Way, 150 Watts Max, Type A Bulb,
10" Harp





JRL-7997 / 38"H
Red Crusted Iron Arms Lamp
Shade / 14" x 23" x 8" /
Red with Gold Leaf Pattern
Three Way, 100 Watts Max, Type A Bulb,
8.5" Harp

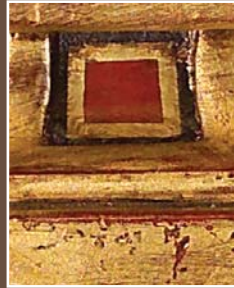
JRL-8133 / 29.5"H

Italian Painted Lamp

Shade / 9" x 16" x 9.5" / Hand-Painted Cream

Three Way, 150 Watts Max, Type A Bulb,

7.5" Harp



JRL-8133



JRL-8141

JRL-8141 / 37"H

Autumn Balustrade

Shade / 16" x 16" x 10" /

Hand-Painted Parchment

Three Way, 150 Watts Max, Type A Bulb,

8" Harp





JRL-7992



JRL-7992 / 30"H

Black Tortoise Shell Lamp

Shade / 13" x 33" x 9" /

Silver Leaf with Antique Finish

One Way, 60 Watts Max, Type A Bulb,
6.5" Harp

JRL-8124 / 38"H

Burled and Marbled Balustrade

Shade / 8" x 20" x 12" / Hand Finish with Green

Three Way, 150 Watts Max, Type A Bulb,

8.5" Harp



JRL-8124





JRL-8015 / 46"H

Turned Candlestick Table Lamp

Shade / 8" x 16" x 14" / Metallic Gold

Three Way, 150 Watts Max, Type A Bulb,
9" Harp.

Disclaimer: Hand-Carved And Finished Wood Lamp.

Variations In Carving And Finish May Occur.

JRL-8011



JRL-8011 / 31.5"H

Hurricane Table Lamp

Shade / 6.5" x 7" x 10" / Crystal with Gold Trim

One Way, 60 Watts Max, Type B Bulb

Disclaimer: Bubbles May Appear In Glass, Along With Variations In Shape.

JRL-8012 / 26.5"H

Hurricane Table Lamp

Shade / 6.5" x 7" x 10" / Crystal with Gold Trim

One Way, 60 Watts Max, Type B Bulb

Disclaimer: Bubbles May Appear In Glass, Along With Variations In Shape.



JRL-8012

JRL-8099



JRL-8099 / 30"H

French Blue Porcelain Urn Lamp with Handles
 Shade / 8" x (16" x 16") x 12" / Beige Linen
 Three Way, 150 Watts Max, Type A Bulb,
 9.5" Harp



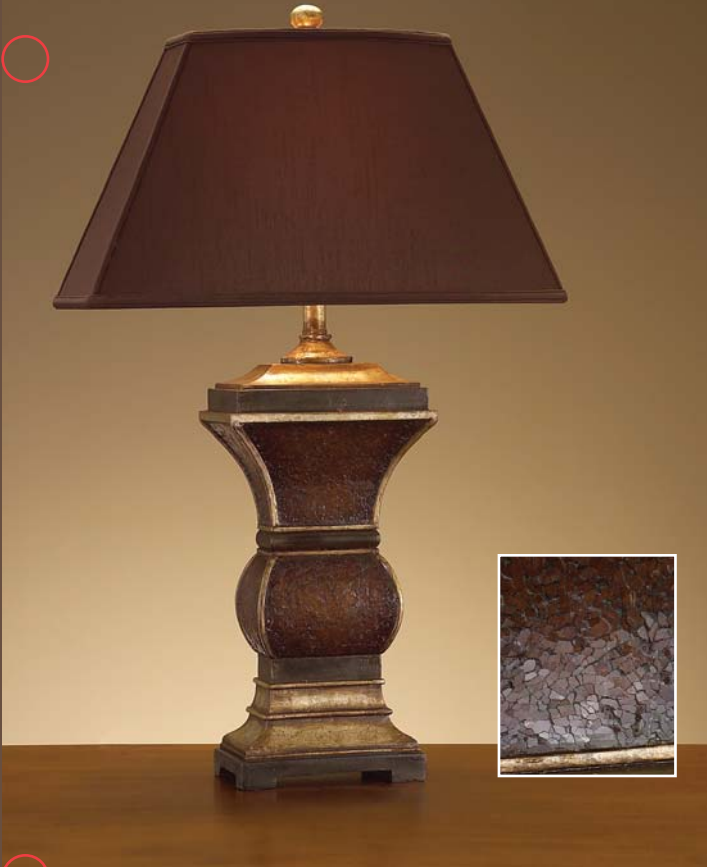
JRL-8065 / 32"H

Classical Greek Flame Urn Lamp
 Shade / 13.5" x 23" x 12" /
 Beige with Hand-Finished Trim
 Three Way, 150 Watts Max, Type A Bulb,
 10" Harp



JRL-8065

JRL-8089



JRL-8089 / 35"H

Glass Fragments Lamp

Shade / (11.75" x 9") x (22" x 15") x 12" / Charcoal Brown

Three Way, 150 Watts Max, Type A Bulb, 9.5" Harp

JRL-7952 / 37"H

Blown Glass W/Traditional Elements

Shade / 12" x 20" x 13" / Metallic Gold

Three Way, 150 Watts Max, Type A Bulb, 10" Harp

Disclaimer: Hand-Blown Glass. Small Bubbles And Variations In Color May Occur.

JRL-7922 / 30"H

Petite Neo Classical Urn Lamp

Shade / (12" x 12") x (13" x 13") x 9.5" / Cloud Creme,

One Way, 60 Watts Max, Type A Bulb, 7.5" Harp



JRL-7952



JRL-7922



JRL-8005 / 33"H

Antique Brass Neptune Lamp

Shade / (11" x 11") x (14" x 14") x 11.5" /

Gold and Charcoal Brown

One Way, 60 Watts Max, Type A Bulb,

Shown As A Pair, Sold Individually.



JRL-7964



JRL-7964 / 33.5"H

Patinated Classic Candlestick

Shade / (8" x 8") x (11.5" x 11.5") x 10.5" / Oyster

One Way, 60 Watts Max, Type A Bulb,

7" Harp

JRL-8148 / 32.5"H

Twist Metal Lamp with a Cracked Shade

Shade / (5" x 5") x (9" x 9") x 8.75" /

French Beige

One Way, 40 Watts Max, Type A Bulb,

6.5" Harp



JRL-8148

JRL-8202



JRL-8202 / 42"H

French Polish Candlestick Lamp

Shade / 10.5" x 18.5" x 10" / Dark Beige

Three Way, 150 Watts Max, Type A Bulb,
7.5" Harp

*Disclaimer: Hand-Carved And Finished Wood Lamp.
Variations In Carving And Finish May Occur.*

JRL-8026 / 38"H

Venetian Fluted Candlestick Lamp

Shade / 6.5" x 20" x 10.5" /

Hand-Painted on Fabric

Three Way, 150 Watts Max, Type A Bulb,
7.5" Harp



JRL-8026



JRL-7990



JRL-7990 / 36"H

Aged Silver Leaf Candlestick Lamp
Shade / 12.5" x 20.5" x 11.5" / Gold
Three Way, 150 Watts Max, Type A Bulb,
8" Harp



JRL-8032 / 27"H

Country Pine Finial Lamp
Shade / (11" x 11") x (12" x 12") x 11" /
Brass Linen
Three Way, 150 Watts Max, Type A Bulb,
9.5" Harp



JRL-8032



JRL-8134



JRL-8134 / 40.5"H

Casual Elegant Carved Lamp

Shade / 12" x 21.5" x 14" / Oyster Gray Linen

Three Way, 150 Watts Max, Type A Bulb,
12" Harp

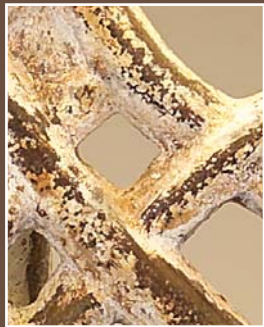


JRL-8197 / 28.5"H

Old Iron Rustic Lamp

Shade / (15" x 11") x (17" x 14") x 10" /
Light Beige Linen

One Way, 60 Watts Max, Type A Bulb,
7" Harp



JRL-8197

JRL-7921



JRL-7921 / 33"H

Rustic Red and Gold Shield Lamp

Shade / 10" x 19" x 12" / Hand-Painted

Three Way, 150 Watts Max, Type A Bulb,

10" Harp

Disclaimer: Hand-Carved And Finished Wood Lamp.

Variations In Carving And Finish May Occur.

JRL-8076 / 31.5"H

Acanthus Leaf Table Lamp

Shade / (7.375" x 9.875") x (10.75" x 19") x 12.7" /

Antique Gold

Three Way, 150 Watts Max, Type A Bulb,

11.5" Harp



JRL-8076



TABLE LAMPS

B-50



JRL-8187 / 35"H
Chandelier Table Lamp
Shade / 20" x 20" x 10" / Cloud Cream
One Way, 60 Watts Max, Type A Bulb,
S Socket



JRL-8163



JRL-8163 / 39.5"H
Sheffield Silver Candelabra
Shade / 3.5" x 6" x 8" / French Beige
Candelabra, 25 Watts Max, Type B Bulb

JRL-8166 / 33"H
Sheffield Silver Grapevine Lamp
Shade / (8" x 6") x (15" x 11") x 10" / French Beige
Three Way, 150 Watts Max, Type A Bulb,
7.5" Harp



JRL-8166



TABLE LAMPS

B-52



JRL-8177 / 26.5"H

Double Arm Brass Accent Lamp

Shade / (3.5" x 3.5") x (5" x 5") x 5" / Brass

Candelabra, 60 Watts Max, Type B Bulb



JRL-8176



JRL-8176 / 36.5"H
Wrapped Brass Reeds Lamp
Shade / 12" x 16" x 10" Beige
3 Way, 150 Watts Max, Type A Bulb,
7.5" Harp

JRL-8200 / 36"H
Mirrored Shade on Chrome Candlestick
Shade / (6.25" x 6.25") x (10" x 10") x 9.25" /
Mirror
One Way, 40 Watts Max, Type A Bulb,
Base Switch, 6.5" Harp



JRL-8200



TABLE LAMPS

B-54



JRL-8113 / 53"H

Victorian Buffet Lamp

Shade / 12" x 12" x 10" /

Hand-Painted Black with Gold Lining and Crystal Inserts,

Three Way, 150 Watts Max, Type A Bulb, 8" Harp



JRL-8116



JRL-8116 / 46"H

Blue Lady Lamp

Shade / 6" x 13" x 12" / Hand-Painted with Trim

One Way, 60 Watts Max, Type A Bulb,

7" Harp



JRL-8160 / 30"H

Sheffield Silver Classic Column

Shade / 15" x 15" x 10" /

Black with Gold Lining

One Way, 60 Watts Max, Type A Bulb,

8" Harp



JRL-8160





JRL-8186

JRL-8186 / 46"H

French Window Guard Lamp

Shade / (19" x 11") x (20" x 12") x 11" / Light Gold

Three Way, 150 Watts Max, Type A Bulb,

8.5" Harp



JRL-8168 / 23.5"H

Hand Distressed Gilded Candelabra

Shade / 3" x 4" x 6" / Cloud Cream Clip On

One Way, 40 Watts Max, Type B Bulb,

Disclaimer: Hand-Carved And Finished Wood Lamp.

Variations In Carving And Finish May Occur.



JRL-8168



JRL-8189 / 31"H

Two Arm Art Glass Table Lamp
Shade / (5" x 3") x (5.5" x 5.5") x 6" / Glass
Candelabra, 40 Watts Max,
Type B Bulb



JRL-8175 / 29.5"H

Brass Sea Fern and Shell Lamp

Shade / 13" x 19" x 10" / French Beige

One Way, 60 Watts Max, Type A Bulb,

7.5" Harp





JRL-8147

JRL-8147 / 28.5"H

Aladdin's Lamp

Shade / (14" x 6") x (21" x 8.5") x 13" / Gypsy Gold

One Way, 15 Watts Max, Type A15 Bulb,

11.5" Harp



JRL-8191 / 28"H

Distressed Gilded Horse Lamp

Shade / (12.5" x 8") x (17.5" x 13") x 9" /

Beige Linen

Three Way, 150 Watts Max, Type A Bulb,

7.5" Harp



JRL-8191



JRL-8174



JRL-8174 / 38"H

Bronze Lady's Hand Lamp

Shade / 10.5" x 18.5" x 10" / Dark Beige

One Way, 60 Watts Max, Type A Bulb,
7" Harp

JRL-7872 / 31"H

Contemporary Sculpture Table Lamp

Shade / (10" x 10") x (18" x 18") x 9" / Gold

One Way, 60 Watts Max, Type A Bulb,
S Socket



JRL-7872

JRL-7884



JRL-7883 / 33.5"H

Giacometti Figure Male Lamp
 Shade / (6.5" x 16") x (7" x 18") x 7.5" /
 Light Gold
 One Way, 60 Watts Max, Type A Bulb,
 6" Harp

JRL-7884 / 25.5"H

Giacometti Figure Female Lamp
 Shade / (6.5" x 16") x (7" x 18") x 7.5" /
 Light Gold
 One Way, 60 Watts Max, Type A Bulb,
 6" Harp



JRL-7883

JRL-8100



JRL-8100 / 34"H

Single Horn Lamp

Shade / 7" x 17" x 11" / Hand-Painted

Three Way, 150 Watts Max, Type A Bulb,

8" Harp

Disclaimer: Natural Horn Used In This Item.

Variations In Size, Shape, And Color May Occur.

JRL-7965 / 36.5"H

Stacked Horn Lamp

Shade / 8" x 12" x 11" / Hand-Painted

One Way, 60 Watts Max, Type A Bulb,

S Socket

Disclaimer: Natural Horn Used In This Item. Variations

In Size, Shape, And Color May Occur.



JRL-7965



JRL-8042 / 37"H
Calla Buffet Lamp (Right)
Shade / 6" x 12" x 11.5" / Oyster
One Way, 60 Watts Max, Type A Bulb,
9.5" Harp

JRL-8042



JRL-8043

JRL-8043 / 37"H
Calla Buffet Lamp (Left)
Shade / 6" x 12" x 11.5" / Oyster
One Way, 60 Watts Max, Type A Bulb,
9.5" Harp





Side View

JRL-8152 / 39.5"H

Reclaimed Wood Buffet Lamp

Shade / 16" x 18" x 10" / Brass Tone

Three Way, 150 Watts Max, Type A Bulb,
8.5" Harp

*Disclaimer: Due To The Nature Of This
Product, Variations In Size, Shape, And Color
Of The Driftwood May Occur.*



JRL-8068



JRL-8068 / 28.5"H
Acanthus Leaf Buffet Lamp
Shade / (11" x 4.5") x (17" x 10.5") x 8.5" /
Antique Gold
One Way, 15 Watts Max, Type A15 Bulb
6.5" Harp



Side View

JRL-8195 / 35"H
Faux Driftwood on Slate Base
Shade / 19" x 20" x 11.25" / Cornhusk
Three Way, 150 Watts Max, Type A Bulb
8" Harp



JRL-8195





JRL-8088 / 36.5"H
Corinthian Column Buffet Lamp
Shade / (6" x 13") x (7" x 14") x 9" /
Hand-Painted Shade
One Way, 60 Watts Max, Type A Bulb,
7" Harp



Side View



JRL-8145



Side View



JRL-8145 / 42"H

Altar Candlestick Lamp

Shade / (16" x 9") x (16" x 9") x 9" /

Half Round Cornstalk Shade

One Way, 60 Watts Max, Type A Bulb,
7.5" Harp

JRL-8060 / 31.5"H

Iron Fragment with Fleur De Lis Lamp

Shade / (4.25" x 8") x (10.25" x 22") x 9" /

Antique Gold

One Way, 60 Watts Max, Type A Bulb,
6.5" Harp

JRL-7999 / 35.5"H

Tuscan Gilded Angels Lamp

Shade / (6" x 13") x (7" x 14") x 9" /

Hand-Painted on Metallic French Beige

Three Way, 150 Watts Max, Type A Bulb,
7.5" Harp

Disclaimer: European Wiring; cord originates at socket.



JRL-8060



JRL-7999

JRL-7983



JRL-7983 / 33"H

Contemporary Porcelain Ovoid Lamp
Shade / (18" x 11") x (18" x 11") x 10.5" /
Light Gold
One Way, 60 Watts Max, Type A Bulb,
7.5" Harp

JRL-7962 / 27"H

Amber Carved Glass Lamp
Shade / (16" x 10") x (16" x 10") x 11" / Charcoal
Three Way, 150 Watts Max, Type A Bulb,
9" Harp

*Disclaimer: Hand-Blown And Hand-Carved Glass.
Natural Imperfections And Color Variations May Occur.*



JRL-7962



JRL-8171 / 25"H

Bottle Green Ovoid Lamp

Shade / (18" x 11") x (18" x 11") x 10.25" / Light Gold

Three Way, 150 Watts Max, Type A Bulb,

9" Harp

Disclaimer: Hand-Blown Glass. Small Bubbles And Variations In Color May Occur.



Side View



JRL-8137



JRL-8137 / 28"H

Copper Glass Lamp with a Beaded Shade
 Shade / 16" x 16" x 10.5" / Copper Beaded
 Three Way, 150 Watts Max, Type A Bulb,
 9.5" Harp

*Disclaimer: Hand-Blown Glass. Small Bubbles And
 Variations In Color May Occur:*



JRL-7989 / 22"H

Three-Light Antiqued Glass Table-Top Hurricane
 Glass Shade / 9.5" Diameter x 20" H / Gold Glass
 Candelabra style, 40 Watts Max, Type B Bulb,
 6 Watt Silicone Bulb Recommended.



JRL-7989



JRL-8179



JRL-8179 / 41"H

Asymmetrical Glass Blocks Lamp
Shade / 13" x 15" x 14" / Sepia Brown
Three Way, 150 Watts Max, Type A Bulb,
11.5" Harp



JRL-7873 / 38"H

Stacked Crystal Buffet Lamp
Shade / 8" x 12" x 10" / Misty Green
One Way, 60 Watts Max, Type A Bulb,
7" Harp

JRL-7873





JRL-8199 / 35" H

Blackened Chrome and Crystal Lamp

Shade / (14" x 7.5") x (14" x 7.5") x 8.5" /

Off White Linen

One Way, 60 Watts Max, Type A Bulb,

7" Harp



JRL-7932



JRL-7932 / 27"H

Crystal Circles Table Lamp

Shade / 14" x 16" x 9" / Sepia Brown

Three Way, 150 Watts Max, Type A Bulb,
8" Harp

JRL-7933 / 27"H

Crystal Orb Table Lamp

Shade / 14" x 16" x 9" / Sepia Brown

One Way, 60 Watts Max, Type A Bulb

7" Harp



JRL-7933



JRL-8198



JRL-8198 / 32"H

Crystal Ball Lamp

Shade / 11" x 14" x 14" /

Off White Linen

Three Way, 150 Watts Max, Type A Bulb,

12.5" Harp

JRL-7865 / 27.5"H

Crystal Sphere Lamp

Shade / 11" x 11" x 16" / Metallic

Three Way, 100 Watts Max, Type A Bulb,

12.5" Harp



JRL-7865



JRL-7863



JRL-7863 / 31"H
Crystal Cylinder Lamp
Shade / 10" x 10" x 16" / Bronze With
Gold Leaf Pattern
Three Way, 100 Watts Max, Type A Bulb,
12.5" Harp

JRL-7934 / 29"H
Stacked Crystal Cylinder Lamp
Shade / 14" x 16" x 9" / Sepia Brown
One Way, 60 Watts Max, Type A Bulb,
S Socket, Twin Pulls



JRL-7934



JRL-8013



JRL-8013 / 33.5"H
Oval Crystal Cylnder Lamp
Shade / (16" x 10") x (16" x 10") x 9.5" /
Misty Green
One Way, 60 Watts Max, Type A Bulb,
8.5" Harp

JRL-8039 / 35.5"H
Mercury Glass Triple Sphere Lamp
Shade / (15" x 10") x (16" x 12") x 10" /
Walnut and Ivy Green
One Way, 60 Watts Max, Type A Bulb,
7" Harp



JRL-8039



JRL-8038 / 27.5"H

Mercury Glass Sphere Lamp

Shade / 16" x 16" x 10" /

Walnut and Ivy Green

Three Way, 150 Watts Max,

Type A Bulb, 8" Harp

*Disclaimer: Hand-Blown Glass. Small
Bubbles And Color Variations May Occur.*

JRL-7956



JRL-7956 / 32"H

Smoked Glass Single Orb Lamp

Shade / 14" x 16" x 9.5" / Dark Beige

Three Way, 150 Watts Max, Type A Bulb,
8" Harp

Disclaimer: Hand-Blown Glass. Small

Bubbles And Color Variations May Occur.

JRL-7958 / 33.5"H

Smoked Glass Double Orb Lamp

Shade / (16" x 9.5") x (18" x 10.75") x 8.25" /

Sepia Brown

One Way, 60 Watts Max, Type A Bulb,

S Socket

Disclaimer: Hand-Blown Glass. Small

Bubbles And Color Variations May Occur.



JRL-7958

JRL-8006



JRL-8006 / 32"H

Luster Glass Candlestick

Shade / 14" x 15" x 10" /

Golden Round Gathered Pleat With Brown Trim

One Way, 60 Watts Max, Type A Bulb,

9" Harp, S Socket, Twin Pulls

Disclaimer: Hand-Blown Glass, Variations May Occur.

JRL-8067 / 37.5"H

Mother of Pearl Obelisk

Shade / 14" x 15" x 11" / Charcoal Brown

Three Way, 150 Watts Max, Type A Bulb,

8.5" Harp

Disclaimer: Natural Mother of Pearl, Variations May Occur.

JRL-8067



JRL-8129 / 24"H
Far East Eclectic Lamp
Shade / 14" x 14" x 6" /
Laser Cut Paper
One Way, 40 Watts Max,
Type A15 Bulb, S Socket, Twin Pulls



JRL-7938



JRL-7938 / 31"H

Metallic Glazed Pottery Lamp
Shade / 14.25" x 14.25" x 8" / Gold
One Way, 60 Watts Max, Type A Bulb,
S Socket

JRL-7905 / 31"H

Sepia Cracked Porcelain Lamp
Shade / (10" x 16") x (10" x 16") x 11" /
Sepia Brown
Three Way, 150 Watts Max, Type A Bulb,
9" Harp



JRL-7905



JRL-7939



JRL-7939 / 30.5"H

Metallic Glazed Pottery Lamp

Shade / 12" x 14" x 9" / Charcoal Brown

One Way, 60 Watts Max, Type A Bulb,

7" Harp

JRL-8000 / 35.5"H

Silver Leaf Spiral Lamp

Shade / 17" x 17" x 11" / Charcoal

Three Way, 150 Watts Max, Type A Bulb,

8" Harp



JRL-8000

JRL-8073



JRL-8073 / 30.5"H

Barley Twist Candlestick Lamp

Shade / 7.5" x 15" x 11" / Beige

One Way, 60 Watts Max, Type A Bulb,

8" Harp



JRL-8024 / 38"H

Wrought Iron Table Lamp

Shade / 16" x 16.5" x 10" / Linen Cotton

One Way, 60 Watts Max, Type A Bulb,

7" Harp



JRL-8024



JRL-7906



JRL-7906 / 26"H

Mirrored Geometric Table Lamp

Shade / (6" x 18") x (6" x 18") x 9" /

Sepia Brown

One Way, 60 Watts Max, Type A Bulb,

7.5" Harp

JRL-7907 / 31"H

Sea Fern Antique Mirror Lamp

Shade / (11" x 19") x (12" x 20") x 11" / Gold

Three Way, 150 Watts Max, Type A Bulb,

10.5" Harp



JRL-7907

JRL-7877 / 31"H

Amber Trilogy Table Lamp

Shade / (18.5" x 10") x (18.5" x 10") x 10" /
Champagne

Three Way, 150 Watts Max, Type A Bulb,
8.5" Harp



JRL-7877

JRL-7866 / 28"H

Stacked Marble

Shade / (10" x 7") x (18" x 12") x 9.25" /
Light Gold

Three Way, 150 Watts Max, Type A Bulb,
8" Harp



JRL-7866

JRL-8158 / 28"H

Metallic Mosaic Lamp

Shade / 17" x 18" x 10" / Oyster Gray

Three Way, 150 Watts Max, Type A Bulb,
8.5" Harp



JRL-8158

JRL-8040



JRL-8040 / 42.5"H

Arrow Buffet Lamp

Shade / (10" x 10") x (10" x 10") x 10" /

Light Gold

Three Way, 150 Watts Max, Type A Bulb,

8" Harp

JRL-7887 / 34"H

Bare Branch Table Lamp

Shade / 14" x 16" x 10" / Umber

Three Way, 150 Watts Max, Type A Bulb,

7.5" Harp



JRL-7887

JRL-7977



JRL-7977 / 30"H

Faux Antler Table Lamp

Shade / (17" x 10") x (17" x 10") x 9" /

Hair On Hide

One Way, 60 Watts Max, Type A Bulb,

7" Harp

*Disclaimer: Natural Hair On Hide.**Variations In Pattern And Color May Occur*

JRL-7976 / 41"H

Faux Antler Candlestick Lamp

Shade / 12" x 14" x 12" / Hair On Hide

Three Way, 150 Watts Max, Type A Bulb,

10" Harp

*Disclaimer: Natural Hair On Hide.**Variations In Pattern And Color May Occur*

JRL-7976





FLOOR LAMPS



FLOOR LAMPS

B-70



JRL-8188 / 72"H

Two Arm Art Glass Floor Lamp

Shade / (4" x 4") x (7.5" x 7.5") x 8" / Art Glass

One Way, 60 Watts Max, Type A Bulb



JRL-8182 / 66"H
Organic Root Floor Lamp
Shade / 19" x 19" x 11.25" / Cornstalk
Three Way, 150 Watts Max, Type A Bulb
7.5" Harp

JRL-8002



JRL-8002 / 70"H

Classic Column with A Rustic Twist Floor Lamp Shade / 8" x 23" x 14" /

Hand-Finished Gold and Black

Three Way, 150 Watts Max, Type A Bulb
9.5" Harp

Disclaimer: Hand-Carved And Hand-Finished Wood. Variations In Carving And Finish May Occur.



JRL-8001

JRL-8001 / 69"H

Classic Column with A Refined Twist Floor Lamp Shade / 8" x 23" x 14" / Hand-Finished Gold and Black
Three Way, 150 Watts Max, Type A Bulb
9.5" Harp

Disclaimer: Hand-Carved And Hand-Finished Wood. Variations In Carving And Finish May Occur.

JRL-8020

JRL-8020 / 71.5"H

French Polish Floor Lamp

Shade / 14" x 18" x 14" / Natural

Three Way, 150 Watts Max, Type A Bulb

11" Harp

Disclaimer: Hand-Carved And Hand-Finished Wood.

Variations In Carving And Finish May Occur.



JRL-8126

JRL-8126 / 70.5"H

Spiral Carved Floor Lamp

Shade / 12.5" x 20.5" x 11.5" / Pleated Gold

Three Way, 150 Watts Max, Type A Bulb

9.5" Harp

Disclaimer: Hand-Carved And Hand-Finished Wood. Variations In Carving And Finish May Occur.

FLOOR LAMPS

B-74



JRL-8027 / 70.5"H

Turned Candlestick Floor Lamp

Shade / 8" x 16" x 14" / Metallic Gold

Three Way, 150 Watts Max, Type A Bulb

8" Harp

Disclaimer: Hand-Carved And Hand-Finished Wood Lamp.

Variations In Carving And Finish May Occur.



JRL-7892 / 65"H

Water Gilded Floor Lamp

Shade / 12.5" x 20.5" x 11.5" / Pleated Gold

Three Way, 150 Watts Max, Type A Bulb

8" Harp

Disclaimer: Hand Finished And Hand-Carved

Wood Lamp. Variations May Occur.

JRL-8025 / 74"H

Wrought Iron Floor Lamp

Shade / 18" x 18" x 12.5" / Linen

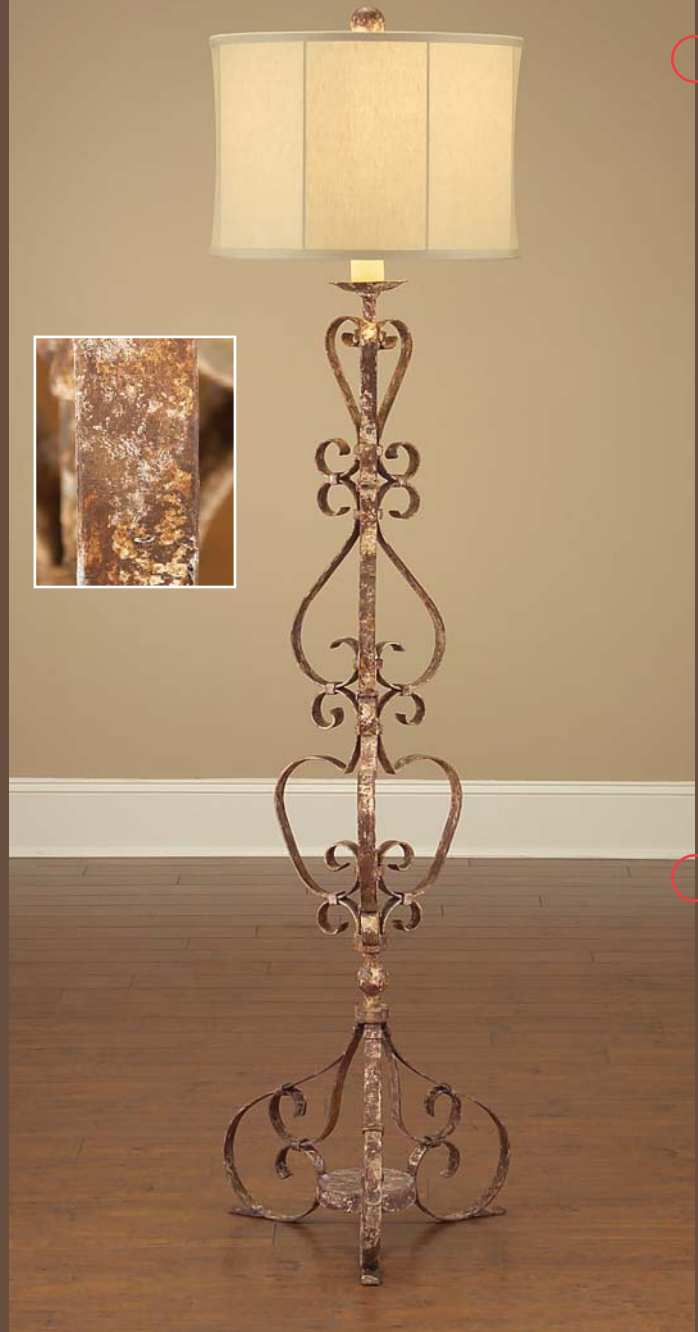
Three Way, 150 Watts Max, Type A Bulb

8" Harp



JRL-8075

JRL-8025



JRL-8075 / 72.5"H

Barley Twist Floor Lamp

Shade / 12" x 20" x 13" / Brass Linen

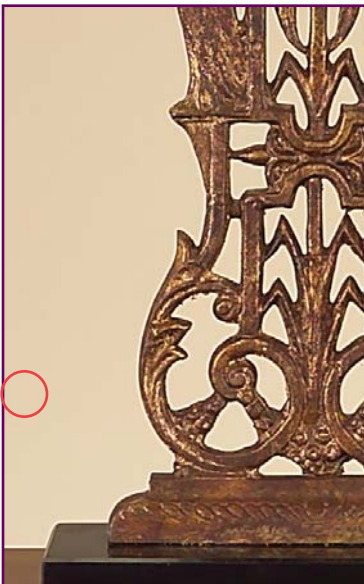
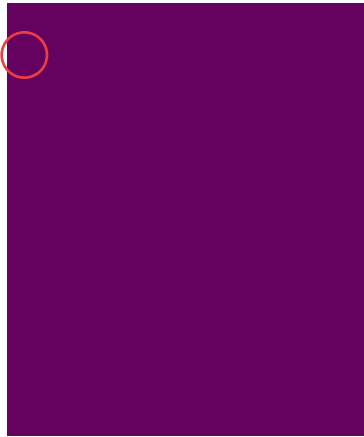
Three Way, 150 Watts Max, Type A Bulb

7.5" Harp



JRL-7886 / 67.5"H
Bare Branch Floor Lamp
Shade / 16" x 17.5" x 13.5" / Umber
Three Way, 150 Watts Max, Type A Bulb
11" Harp





PORTABLE LAMPS INDEX

JRL-7863.....	B-55	JRL-7997.....	B-17
JRL-7865.....	B-54	JRL-7999.....	B-47
JRL-7866.....	B-65	JRL-8000.....	B-62
JRL-7872.....	B-40	JRL-8001.....	B-72
JRL-7873.....	B-51	JRL-8002.....	B-72
JRL-7877.....	B-65	JRL-8005.....	B-24
JRL-7883.....	B-41	JRL-8006.....	B-59
JRL-7884.....	B-41	JRL-8011.....	B-21
JRL-7886.....	B-77	JRL-8012.....	B-21
JRL-7887.....	B-66	JRL-8013.....	B-56
JRL-7892.....	B-75	JRL-8014.....	B-12
JRL-7905.....	B-61	JRL-8015.....	B-20
JRL-7906.....	B-64	JRL-8016.....	B-16
JRL-7907.....	B-64	JRL-8020.....	B-73
JRL-7921.....	B-29	JRL-8023.....	B-14
JRL-7922.....	B-23	JRL-8024.....	B-63
JRL-7932.....	B-53	JRL-8025.....	B-76
JRL-7933.....	B-53	JRL-8026.....	B-26
JRL-7934.....	B-55	JRL-8027.....	B-74
JRL-7938.....	B-61	JRL-8029.....	B-11
JRL-7939.....	B-62	JRL-8031.....	B-15
JRL-7952.....	B-23	JRL-8032.....	B-27
JRL-7956.....	B-58	JRL-8038.....	B-57
JRL-7958.....	B-58	JRL-8039.....	B-56
JRL-7962.....	B-48	JRL-8040.....	B-66
JRL-7964.....	B-25	JRL-8042.....	B-43
JRL-7965.....	B-42	JRL-8043.....	B-43
JRL-7976.....	B-67	JRL-8060.....	B-47
JRL-7977.....	B-67	JRL-8065.....	B-22
JRL-7983.....	B-48	JRL-8067.....	B-59
JRL-7990.....	B-27	JRL-8068.....	B-45
JRL-7989.....	B-50	JRL-8070.....	B-10
JRL-7992.....	B-19	JRL-8072.....	B-9
JRL-7996.....	B-16	JRL-8073.....	B-63



PORTABLE LAMPS INDEX



JRL-8075.....B-76

JRL-8076.....B-29

JRL-8088.....B-46

JRL-8089.....B-23

JRL-8099.....B-22

JRL-8100.....B-42

JRL-8106.....B- 7

JRL-8113.....B-34

JRL-8114.....B-11

JRL-8116.....B-35

JRL-8120.....B-13

JRL-8121.....B-10

JRL-8124.....B-19

JRL-8126.....B-73

JRL-8128.....B- 6

JRL-8129.....B-60

JRL-8133.....B-18

JRL-8134.....B-28

JRL-8135.....B-15

JRL-8137.....B-50

JRL-8140.....B- 8

JRL-8141.....B-18

JRL-8145.....B-47

JRL-8147.....B-39

JRL-8148.....B-25

JRL-8152.....B-44

JRL-8153.....B- 7

JRL-8158.....B-65

JRL-8160.....B-35

JRL-8163.....B-31

JRL-8166.....B-31

JRL-8168.....B-36

JRL-8171.....B-49

JRL-8174.....B-40

JRL-8175.....B-38

JRL-8176.....B-33

JRL-8177.....B-32

JRL-8179.....B-51

JRL-8182.....B-71

JRL-8186.....B-36

JRL-8187.....B-30

JRL-8188.....B-70

JRL-8189.....B-37

JRL-8191.....B-39

JRL-8195.....B-45

JRL-8197.....B-28

JRL-8198.....B-54

JRL-8199.....B-52

JRL-8200.....B-33

JRL-8202.....B-26



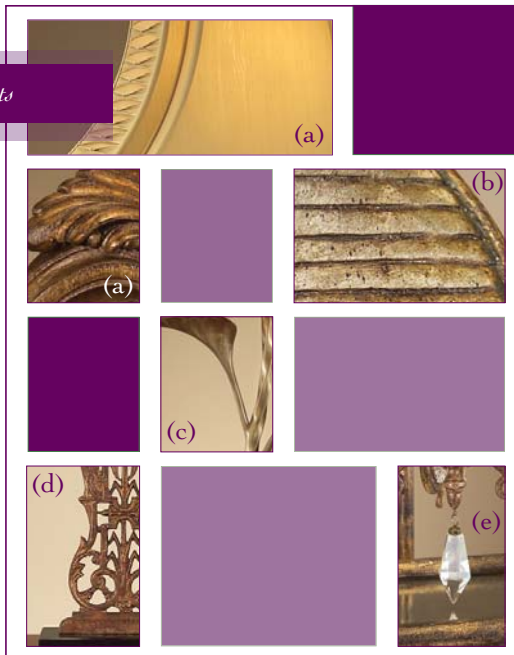
As Shown:

Floor Lampa Divider



- (a) JRL-7996
- (b) AMF-05-1044V18-G629
- (c) EUR-01-0117
- (d) JRB-2048

Index Shots



- (a) JRL-8076
- (b) JRL-8000
- (c) JRL-8043
- (d) JRL-7999
- (e) JRL-8187



JRL-8076
p. B-29



JRL-8000
p. B-62



JRL-8043
p. B-45



JRL-7999
p. B-47



JRL-8187
p. B-50





306 Eastman
Greenwood, MS 38930
p 662 453 5809
f 662 453 3680
www.johnrichard.com

