



SAHCO

Collection 2020

SAHCO

Sahco 2020 Collection 'Echoes'

The Sahco collection reflects echoes of time and memories. A tactile language that speaks to our emotions.

The world in which we live is not just made of the here and now. As we see, feel and listen to our environment we are also strongly affected by memories – feelings that add many rich layers of experience and emotion and allow us to build up our own particular view of the world. These echoes of days gone by were central to the inspiration for the 2020 Sahco collection. As they travelled around the globe, Design Director Anna Vilhelmine Ebbesen and Art Director Vincent Van Duysen allowed elements of the past to combine with a vision of the future creating textiles that convey the rich patina of history viewed through the lens of the modern world in which we live.

Travel plays its part in the tapestry of our life and here echoes of such far flung trips to Peru, Japan, Morocco and Italy appear, creating an interior world that tells a story of experience and a life lived to the full. The collection plays with the contrasts between heavy and light weaves, rich textures and sheer transparency. Fine velvets, elegant moirés and jacquard chenilles evoke the luxury. Whilst glazed cotton and iridescent taffetas bring a modernity to the range to create richly nuanced textile combinations within interiors.

The contemporary feel of textiles inspired by graphic art and pattering of marble sit beautifully next to those influenced by Renaissance wall coverings or antique Japanese kimonos. Soft and tactile textures, crisp and papery surfaces with bold designs create an exciting blend of different materials with distressed finishes and dissolved patterns.

Colours are centred around a natural harmonious base, shades of brown and beige, tobacco and bone white. Highlighted with aqua blues, mint greens and caramel to create a palette of soft and blurred hues that perfectly captures the mix of classic and contemporary for which Sahco is famed.





Glaze 007



Cocoon 006, Fez 004, Nazca 005, Moiré 013, Seersucker 005



Glaze 011, Zero 012, Nazca 006, Fez 010



Avalon 2 011



Shade 001



Shade 002, Zero 004, Step 014, Glaze 006



Venice 006, Powder 005, Powder 001, Avalon 2 011



Nazca 009



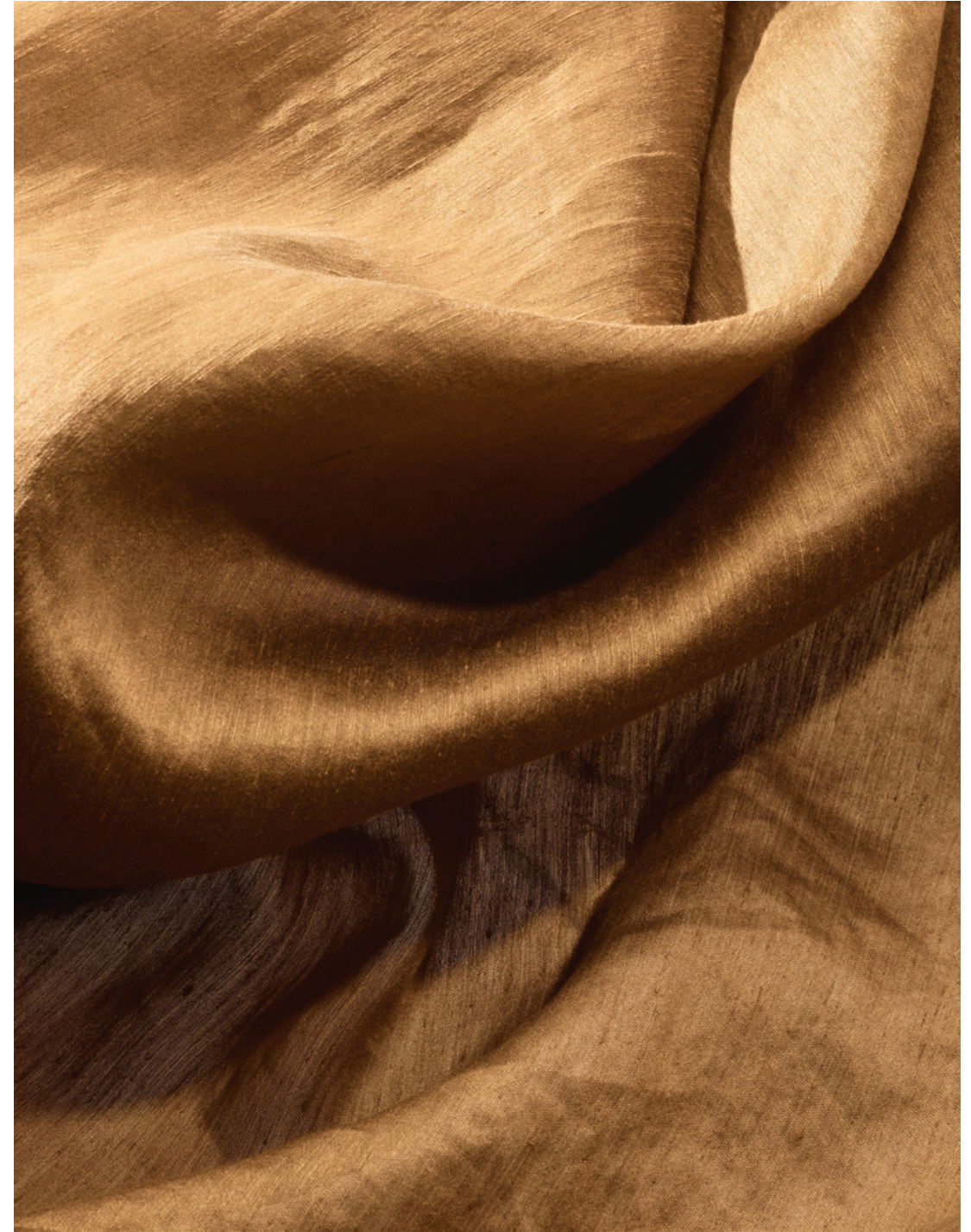
Powder 004



Shade 001, Step 012, Step 011, Powder 005



Avalon 2046, Zero 007, Glaze 007



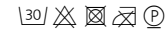
Glam 009





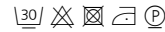
AVALON 2
Sahco's much loved basic, the *Avalon* velvet, returns with an expanded palette of forty pastel and brighter hues. The piece dyed textile retains its unique glossy surface that is almost reminiscent of silk as well as its flame retardant properties.

Upholstery
Article no. 600689
Colours 40
Width 140 cm / 55 in
Material 100% Trevira CS



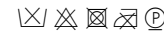
GLAM
Inspired by shimmering silks, *Glam* takes the classic iridescent nature of the textile and reinterprets it in linen satin. Delicate and artisanal in appearance, one side of the textile has a matt linen look and the other, a shiny, almost metallic finish. Double-dyed to give its distinctive two-tone effect, the double width textile comes in ten natural shades. Due to the artisan double-dyeing, variations in shade may occur naturally.

Drapery
Article no. 600701
Colours 10
Width 315 cm / 124 in
Material 81% Linen, 19% Nylon



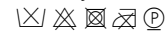
FEZ
This plain coloured jacquard velvet textile is designed by Art Director Vincent Van Duysen to capture the beautiful irregularity of Middle Eastern rugs. A chenille base with a cotton yarn pile creates a textile reminiscent of corduroy and has a casual and rich appearance. It is offered in sixteen deep bold and earthy tones.

Upholstery
Article no. 600698
Colours 16
Width 140 cm / 55 in
Repeat 69 cm / 27 in
Material 83% Cotton, 2% Viscose, 15% Polyester



MOIRÉ
Art Director Vincent Van Duysen's *Moiré* is a true example of the expert craftsmanship. Using special rollers, the rib textile is calendared to produce the distinctive watermark effect – in this case reminiscent of Italian marble – and, as it depends on individual craftsmen, each piece is unique. *Moiré* is made from a blend of recycled cotton yarns and is offered in seventeen colours ranging from watercolour inspired neutrals to intense bolder shades.

Upholstery
Article no. 600697
Colours 17
Width 140 cm / 55 in
Material 24% Acrylic, 34% Cotton, 5% Others, 23% Polyamide, 7% Polyester, 7% Wool



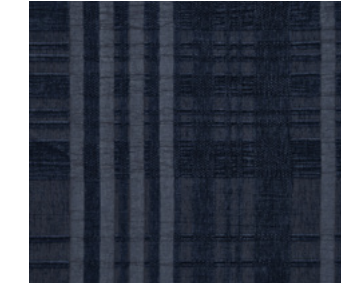
NAZCA
Inspired by the famous *Nazca* lines in Peru, Art Director Vincent Van Duysen has designed a rich bouclé jacquard with a graphic spiral motif in tonal shades. The rich textile has a dry handle and is woven from a blend of recycled cotton yarns. Its palette of eleven colours is rich and earthy with clay and ceramic influenced shades.

Upholstery
Article no. 600696
Colours 11
Width 138 cm / 54 in
Repeat 76 cm / 29 in
Material 34% Cotton, 16% Polyamide, 34% Polyester, 16% Viscose



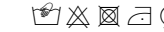
POWDER
With a colour palette and texture inspired by make-up and colour pigments, *Powder* is an elegant light sheer textile with a delicate crepe-like handle. Made from flame retardant Trevira yarn, it is offered in fifteen piece-dyed powdery shades.

Drapery
Colours 15
Article no. 600693
Width 330 cm / 130 in
Material 100% Trevira CS



SHADE
Using artist Rachel Whiteread's architectural sculptures as a starting point, the lines and grid-like pattern in *Shade* reference the distinctive reliefs her artworks. The semi-transparent chenille drapery has a complex jacquard weave which creates a beautiful interplay between transparency and density. *Shade* comes in two piece dyed colours – a deep dark blue and a natural off white.

Drapery
Article no. 600702
Colours 2
Width 150 cm / 59 in
Repeat 43 cm / 17 in
Material 32% Cotton, 14% Polyamide, 54% Viscose



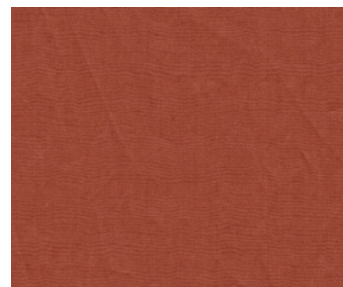
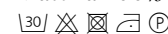
VENICE
Inspired by the beauty of Renaissance wallcoverings, *Venice* is a modern chenille interpretation of a classic damask jacquard with a voluminous and rich drape. The mix of yarns and weaving technique reveals an artisanal approach that is heightened by the double-dyed palette of seven deep and elegant colours including a fresh mint green. Variations in shade may occur naturally due to the complexity in the construction of *Venice*.

Drapery
Article no. 600704
Colours 7
Width 135 cm / 53 in
Repeat 80 cm / 31 in
Material 23% Cotton, 15% Nylon, 62% Viscose



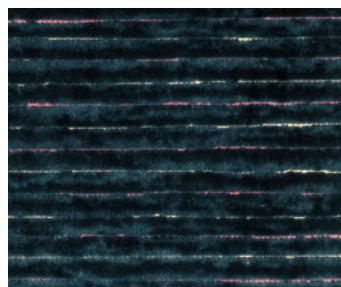
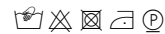
COCOON
Inspired by the web-like cocoons created by silk worms, this fabric is constructed of two layers with floating yarns between. The delicate weave construction is fixed by partial ledgers to form a soft translucent sheer. The double-layered textile is yarn-dyed with a coloured back that can be seen through the paler front to give a unique and very gentle appearance. *Cocoon* is offered in nine subtle shades.

Drapery
Article no. 600690
Colours 9
Width 300 cm / 118 in
Material 100% Polyester FR



GLAZE
Strongly influenced by the shiny surfaces of hi-tech fashion, *Glaze* is a soft pure cotton textile with a glazed front and a matt reverse. The finish gives a papery appearance that highlights the contrasting in textures of the two sides. The finish is not permanent and decreases after washing. The soft palette of eleven colours are inspired by ceramics and clay.

Drapery
Article no. 600700
Colours 11
Width 148 cm / 58 in
Material 100% Cotton



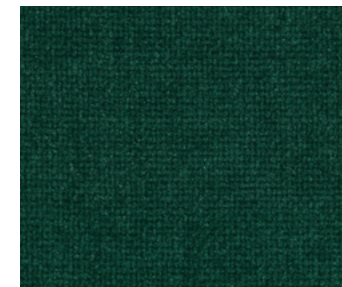
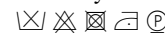
FEZ STRIPE
Taking his inspiration from shawls and rugs in the Middle East, Art Director Vincent Van Duysen has created this luxurious irregular striped jacquard velvet textile, perfect for upholstery. Its two toned coloured background adds depth to the soft cotton pile to give it a modern and fashionable appeal. It is offered in six neutral and earthy tones.

Upholstery
Article no. 600705
Colours 6
Width 140 cm / 55 in
Repeat 70 cm / 28 in
Material 70% Cotton, 30% Polyester



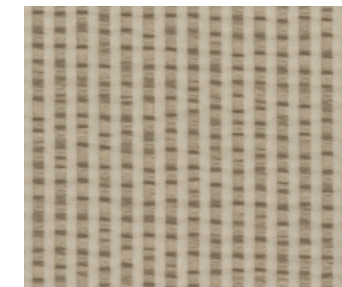
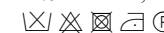
MOMENT
Referencing the exquisite embroidery work in antique Japanese kimonos, *Moment* is a dissolved jacquard textile with bold inverted stripes broken into a leafy 'ikat' design. Elegant and sophisticated, the yarn-dyed textile comes in two graphic colourways of moonlight black and ebony white.

Drapery
Article no. 600692
Colours 2
Width 140 cm / 55 in
Repeat 87 cm / 34 in
Material 58% Cotton, 42% Polyester



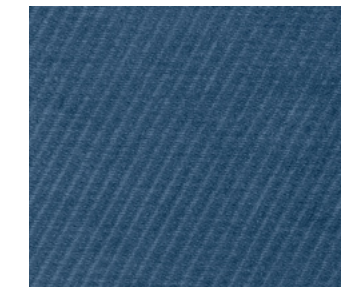
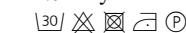
NARA
This classic upholstery is given a new twist with a plain weave in viscose and linen chenille that gives a distinctive textured appearance. The rich and soft textile has a semi-dry handle with a lively and natural surface. Available in sixteen shades ranging from sophisticated neutrals to deep bold tones, *Nara* is a timeless upholstery textile.

Upholstery
Article no. 600699
Colours 16
Width 140 cm / 55 in
Material 35% Cotton, 15% Viscose, 50% Linen



SEERSUCKER
Reminiscent of classic seersucker tailoring textiles, this finely striped drapery has a soft and crisp handle. Using a coloured weft on a black or white warp gives a gentle tonal effect heightened by the contrast in textures, the overall appearance is elegant and classic. The flame retardant drapery is offered in twelve colours.

Drapery
Article no. 600691
Colours 12
Width 310 cm / 122 in
Material 95% Trevira CS, 5% Polyester FR



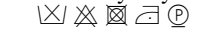
STEP
With its graphic design of parallel repeated ribs, *Step* is a modern interpretation of a classic twill rendered in chenille yarn. The yarn-dyed tonal colours create a subtle and sophisticated diagonal stripe on a textile that has a soft and gentle handle. *Step* is offered in a wide palette of twenty-three beautiful shades.

Upholstery
Article no. 600695
Colours 23
Width 140 / 55 in
Material 48% Cotton, 30% Viscose, 22% Polyester



ZERO
The influence of Parisian couture clothing can be seen in this elegant and irregular bouclé upholstery textile. The pearl effect yarn is used in both warp and weft giving a luxurious handle and a sophisticated appearance. The sixteen colourways range from tonal through to contrasting 'salt and pepper' combinations.

Upholstery
Article no. 600703
Colours 16
Width 140 cm / 55 in
Material 65% Cotton, 20% Polyacrylic, 15% Polyester



Sahco Brand Story

Exquisite taste, elevated quality and a refined sense of luxury – these are the principals on which Sahco was founded. Using classical references as a starting point but always infusing them with an elegant, contemporary touch, Sahco has nearly two hundred years of experience in the world of upholstery and interior textiles. Throughout that time period, they have carved a name for themselves as a premium fabric decor company: one that has found its place in the hearts and homes of discerning customers across the world.

Sahco's story starts in 1831 when the company's founder decided to build on generations of his family's knowledge of the textile trade and set up his own business in Southern Germany. Together with his son, he specialized in importing fine carpets, silks and upholstery fabrics from both France and the Far East, slowly building up a business that survived the economic and social turmoils of Europe to become truly international. By the end of the Twentieth Century, the company had worldwide distribution emanating from its new headquarters in Nuremberg and its showrooms in New York, Paris and Milan.

Serving the needs of a cosmopolitan audience who demand elegant, contemporary design in the best possible quality, Sahco prides itself on its collection of upholstery and curtaining fabrics that whisper rather than shout. Rich textures, sophisticated colours and classic design characterise textiles that speak of timeless appeal and refined taste. Soft neutral colours are used as a base for many designs, with bolder graphic details adding the interest but always staying within the realms of simple and harmonious design. Regularly used by leading interior designers, architects and furniture manufacturers, Sahco fabrics have found themselves in the most beautiful homes, hotels and even yachts in the world, safe in the knowledge that their luxurious appeal adds the perfect finishing touch.

In May 2018, Sahco was acquired by Kvadrat, one of the world's leading design textile companies based in Denmark. With a new creative team in place and the shared knowledge of two rich design heritages, Sahco enters an exciting new phase in its long history.

sahco.com

