



PERSONAL LANDSCAPES

ZR

ZIMMER+ROHDE

  
CLICKBOOK

# Overview

SQUARE	04	SAHARI	21
RIVA	05	SCENERY	22
KALEIDO	06	BIRCHWOOD	23
FEVER	07	SIERRA	24
LAKEVIEW	08	KATHMANDU	25
ELDORADO	09	CANYON	26
SEASCAPE	10	PANORAMA RE FR	27
HILLSTRIPE	11	LATENIGHT FR	28
NIL FR	13	PAMIR RE	29
SOLICE MAT RE FR	15	NOMAD RE	31
ULTRA PLUS RE FR	18	INFINITY ZOOM	32
HIGHLAND RE	20	PARC FR	34

**ZIMMER + ROHDE**



# Personal Landscapes

ZIMMER + ROHDE

Every landscape tells a story: The vastness of the sea, the drama of the mountains, the softness of a lake landscape, the security of a valley or the density of a forest. It is not surprising that artists of all origins have always been fascinated by the experience of landscapes. In Europe, for example, landscape painting has been an independent art form since the Renaissance and in Asian cultures landscape depiction dates back to the 6th century. The concept of Land Art, which originated in the 1980s, abstracts nature by artists using elements such as stone, wood or pigments to create a subjective interpretation of nature.

This collection is the result of a search for traces of this artistic exploration of nature, whether through the sweeping view of landscape silhouettes or through a very close observation of the sensual nature of original surfaces such as earth, water, sand, stone, wood or moss.

Thus LAKEVIEW shows quite vividly an idealised lake landscape. ELDORADO is an abstract work of art inspired by a mythical landscape, for which metallic pigments were applied by hand between elaborately embroidered stripe motifs. The fine horizontal stripes of CANYON play with the colour gradient of multi-coloured rock formations of canyons and deserts. Like a blurred landscape in the distance, PANORAMA also has a vibrating colour gradient. The expressive plain fabrics HILLSTRIPE, NOMAD, PAMIR, BIRCHWOOD and SAHARI are reminiscent of lavender fields, moss, birch bark or sand dunes.

PERSONAL LANDSCAPES picks up on the sensual relationship between humans and nature and transfers it to another form of landscape, namely the residential landscape, which today more than ever is, like nature, a place of familiarity and relaxation.



# Square



10865-884



10865-900



10865-992

OVERVIEW

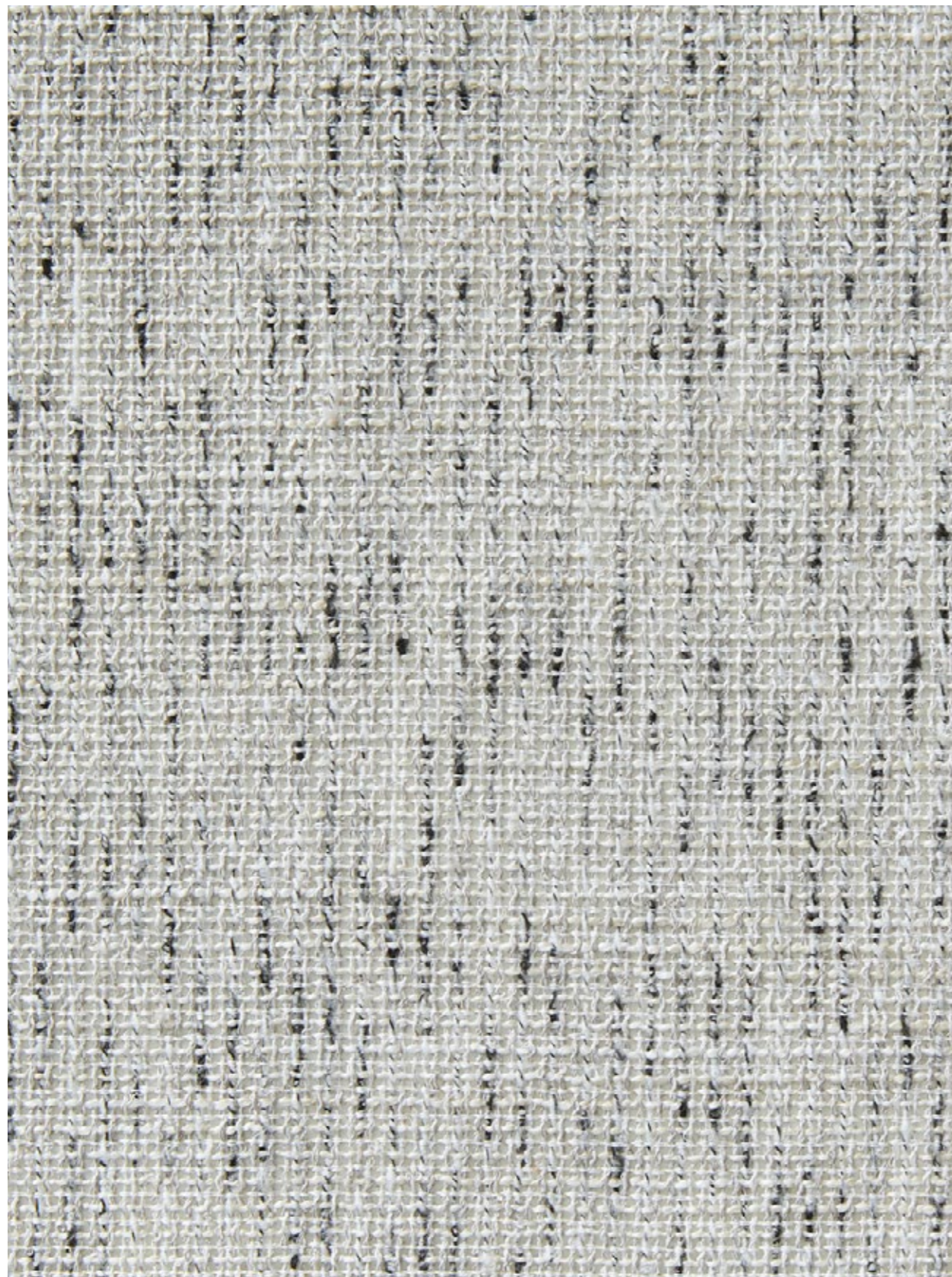
**ZIMMER + ROHDE**

NAME <b>Square</b>
ARTICLE NUMBER <b>10865</b>
CATEGORY <b>Decoration</b>

FABRIC WIDTH <b>140 cm</b>
MATERIAL <b>89 % PES, 11 % LI</b>
MARTINDALE

PROPERTIES
CARE INSTRUCTIONS 

The checks of SQUARE give the impression of woven ribbons. The double-layered fabric is equally impressive with its clarity and three-dimensional effect and is particularly effective in straight-line architecture with large windows and smooth surfaces.



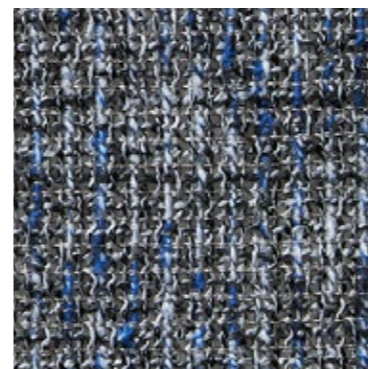
# Riva



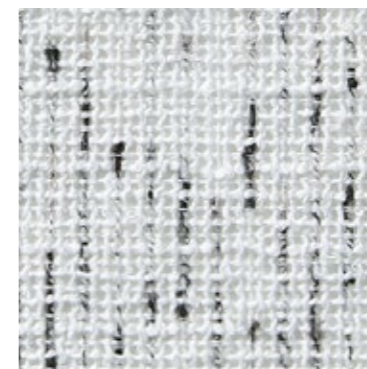
10869-890



10869-894



10869-959




10869-990

## ZIMMER+ROHDE

NAME <b>Riva</b>
ARTICLE NUMBER <b>10869</b>
CATEGORY <b>Decoration</b>

FABRIC WIDTH <b>315 cm</b> ↑↓
MATERIAL <b>62 % PES, 38 % PAN</b>
MARTINDALE

PROPERTIES <b>Recommend puddle on the floor</b>
 

CARE INSTRUCTIONS
    

The semi-transparent decorative fabric in a masculine tweed look is a sensation for minimalist interiors that follow a consistently modern design vocabulary and is most convincing in neutral colour nuances.



# Kaleido



10871-982



10871-993

OVERVIEW

**ZIMMER + ROHDE**

NAME  
**Kaleido**

ARTICLE NUMBER  
**10871**

CATEGORY  
**Decoration**

FABRIC WIDTH  
**150 cm**

MATERIAL  
**100 % CO, Embroidery  
70 % PAN 30 % CV**

MARTINDALE

PROPERTIES



CARE INSTRUCTIONS

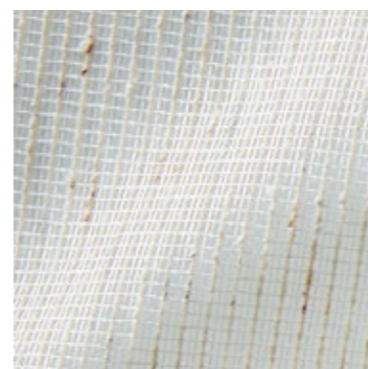


Like a randomly chosen section of a dense bamboo forest, a generous, organic stripe pattern with two-tone matte-gloss effects unfolds on the naturally elegant cotton background of KALEIDO.



# Fever

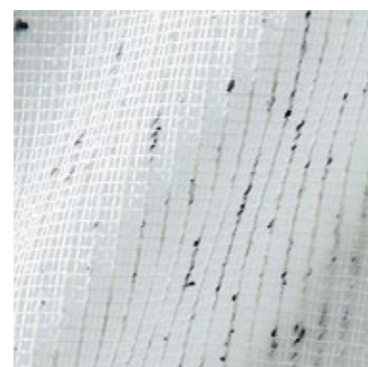
## ZIMMER + ROHDE



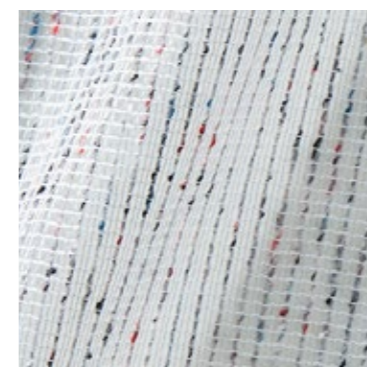
10879-882



10879-886



10879-992



10879-994

NAME <b>Fever</b>
ARTICLE NUMBER <b>10879</b>
CATEGORY <b>Sheers</b>

FABRIC WIDTH <b>315 cm</b> ↑↓
MATERIAL <b>47 % PES, 26 % WO, 16 % PA, 11 % SE</b>
MARTINDALE

PROPERTIES 
CARE INSTRUCTIONS 

Glossy, matte and structured are the three different yarns used to produce this ultra-light and highly transparent fabric. It is precisely this interplay of contrasting materials that gives FEVER its special charm.

# Lakeview

**ZIMMER + ROHDE**

NAME

**Lakeview**

ARTICLE NUMBER

**10881**

CATEGORY

**Decoration**

FABRIC WIDTH

**143 cm**

MATERIAL

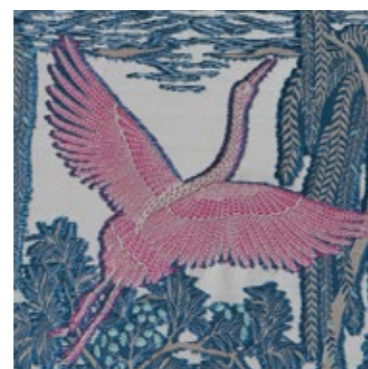
**40 % CO, 30 % PES,  
30 % CV**

MARTINDALE

PROPERTIES



CARE INSTRUCTIONS



10881-544



10881-568



10881-892



10881-996

Inspired by the art of Japanese landscape watercolours, LAKEVIEW shows an idealised lake scene with a crane, the Asian symbol for happiness and longevity, as the main motif. The floating weft threads on the front emphasise the elaborate, hand crafted production technique and really highlight the motifs. This is a textile masterpiece with impressive artistic expression.



# Eldorado

This abstract work of art is inspired by ELDORADO, the legendary golden landscape. The beauty of the special embroidery is enriched by hand-painted brush strokes, which are applied individually with metallic pigments.



10882-486



10882-564



10882-844



10882-888



10882-892

## ZIMMER + ROHDE

COLLECTION <b>Eldorado</b>
ARTICLENUMBER <b>10882</b>
CATEGORY <b>Decoration</b>

FABRIC WIDTH <b>140 cm</b>
-------------------------------

MATERIAL <b>Ground 100 % CO Embroidery 60 % CV 40 % PAN</b>
--

MARTINDALE
------------

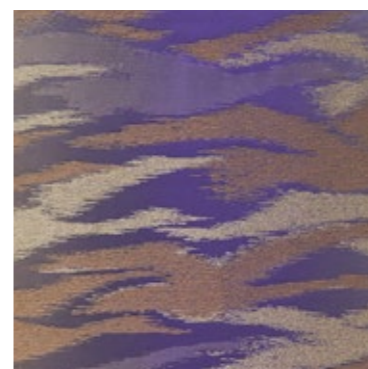
PROPERTIES 
---

CARE INSTRUCTIONS 
--

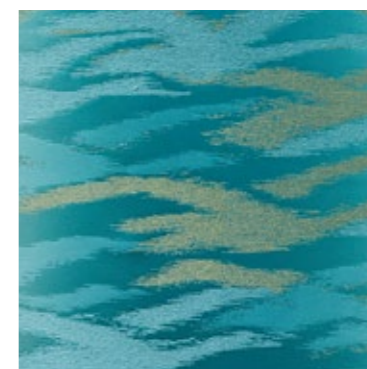
OVERVIEW

# Seascape

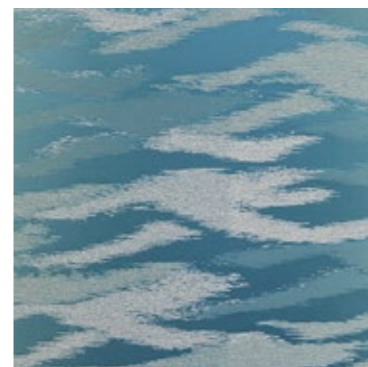
**ZIMMER + ROHDE**



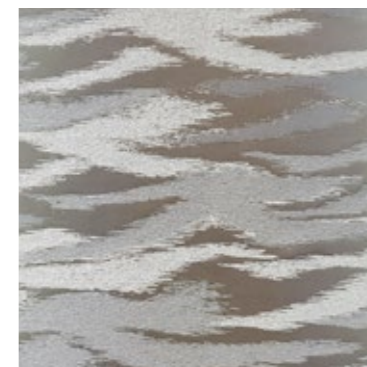
10883-488



10883-676



10883-684



10883-882

NAME

**Seascape**

ARTICLE NUMBER

**10883**

CATEGORY

**Decoration**

FABRIC WIDTH

**143 cm**

MATERIAL

**40 % CO, 32 % CV,  
28 % PES**

MARTINDALE

PROPERTIES

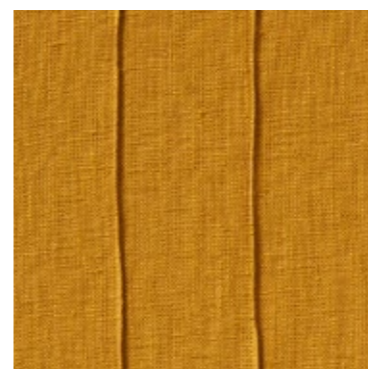
CARE INSTRUCTIONS



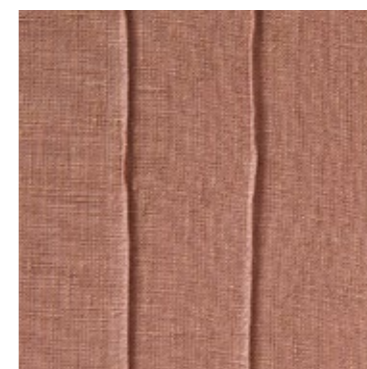
SEASCAPE is inspired by the reflection of the sky on water. Through the digital colour gradient, the woven wave design, just like its model, varies from delicate to brightly iridescent.



# Hillstripe



10884-115



10884-485



10884-493



10884-497

## ZIMMER + ROHDE

NAME <b>Hillstripe</b>
ARTICLE NUMBER <b>10884</b>
CATEGORY <b>Decoration</b>

FABRIC WIDTH <b>138 cm</b>
-------------------------------

MATERIAL <b>99 % LI, 1 % PES</b>
-------------------------------------

MARTINDALE
------------

PROPERTIES <b>Protect from direct sunlight</b>

CARE INSTRUCTIONS 
-----------------------

HILLSTRIPE captivates with its hand crafted character. Fine hand-stitched tucks form vertical elevations that give the plain linen fabric a lively surface. In 14 beautiful colours, HILLSTRIPE celebrates the richness and depth of natural colour worlds.

OVERVIEW

**ZIMMER + ROHDE**



10884-557



10884-594



10884-666



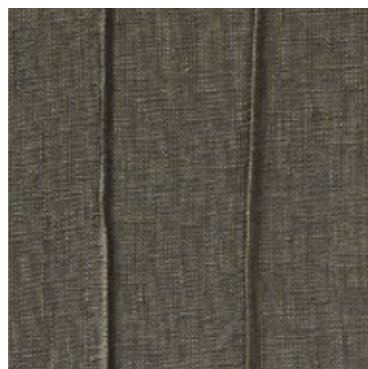
10884-795



10884-882



10884-900



10884-977



10884-980





10884-991



10884-993

NAME <b>Hillstripe</b>
ARTICLE NUMBER <b>10884</b>
CATEGORY <b>Decoration</b>

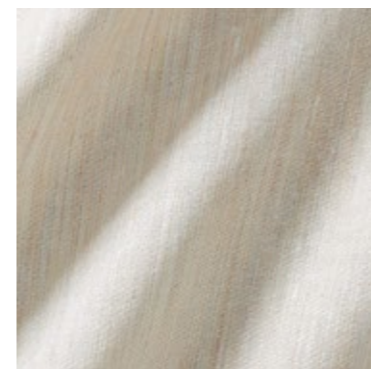
FABRIC WIDTH <b>138 cm</b>
MATERIAL <b>99 % LI, 1 % PES</b>
MARTINDALE
PROPERTIES <b>Protect from direct sunlight</b> 
CARE INSTRUCTIONS 



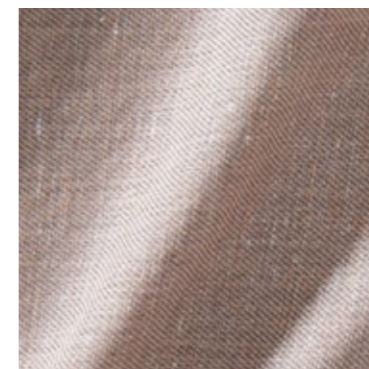
# NiL FR

OVERVIEW

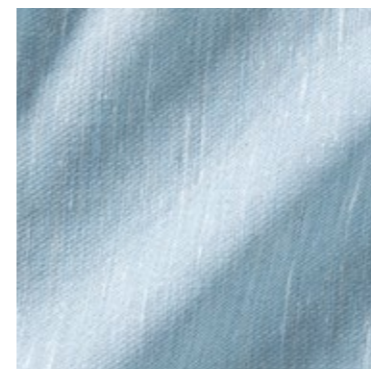
**ZIMMER + ROHDE**



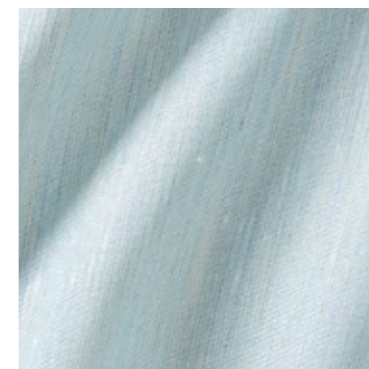
10885-482



10885-494



10885-554



10885-563

NAME <b>NiL FR</b>
ARTICLE NUMBER <b>10885</b>
CATEGORY <b>Decoration</b>

FABRIC WIDTH <b>300 cm</b> ↑↓
MATERIAL <b>100 % PES FR</b>
MARTINDALE

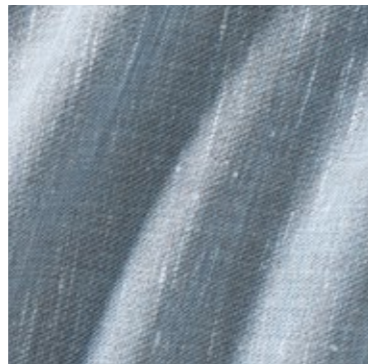
PROPERTIES 
CARE INSTRUCTIONS 

Soft flowing, opaque and wide width, NiL FR is universally applicable. In a linen look with a natural-looking vertical flammé effect. This flame-retardant plain comes in 20 soft colour shades, suitable for casual decorations in both private and exhibition spaces.

OVERVIEW



10885-584



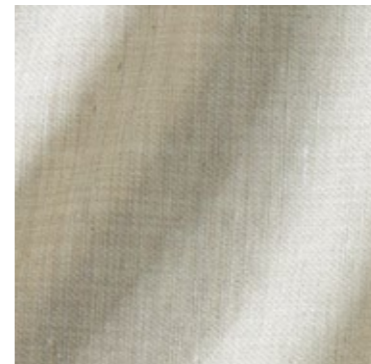
10885-585



10885-674



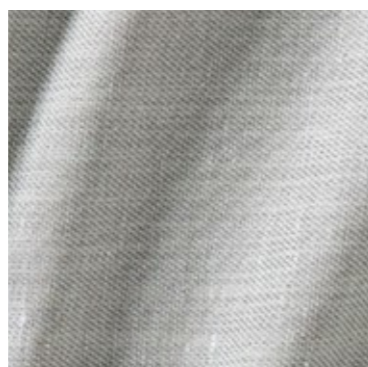
10885-793



10885-813



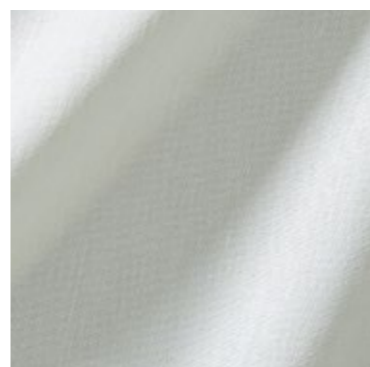
10885-883



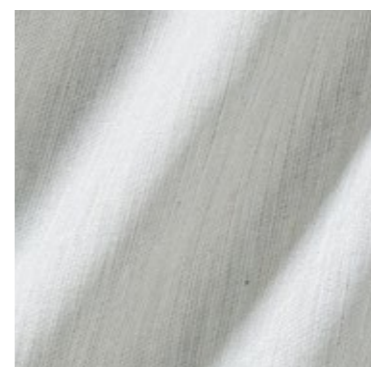
10885-884



10885-895



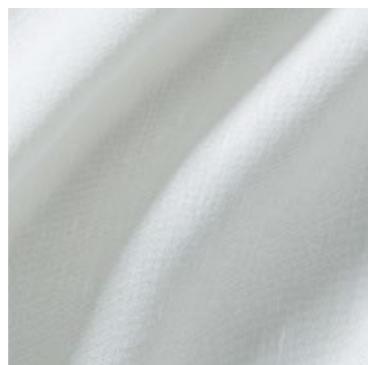
10885-981



10885-983



10885-990



10885-991



10885-992



10885-993



10885-994








10885-996

**ZIMMER + ROHDE**

NAME <b>Nil FR</b>
ARTICLE NUMBER <b>10885</b>
CATEGORY <b>Decoration</b>

FABRIC WIDTH <b>300 cm</b> ↑↓
MATERIAL <b>100 % PES FR</b>
MARTINDALE

PROPERTIES   
CARE INSTRUCTIONS     



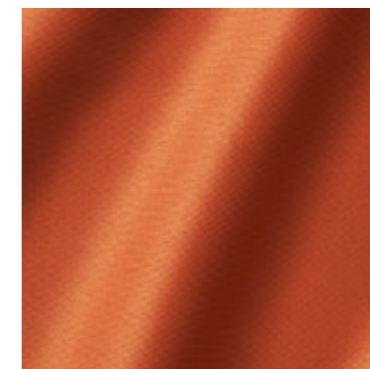
# Solice MAT RE FR

OVERVIEW

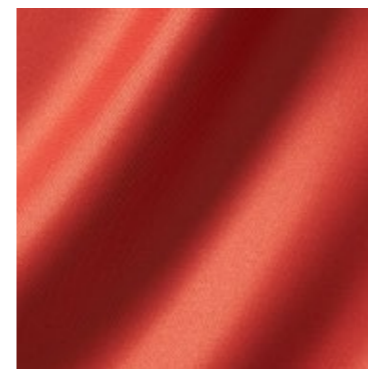
**ZIMMER + ROHDE**



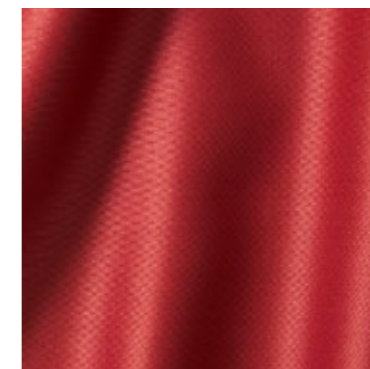
10886-114



10886-224



10886-333



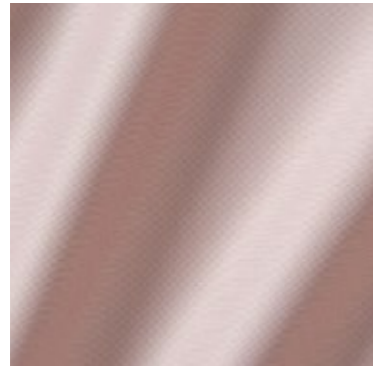
10886-334

NAME <b>Solice MAT RE FR</b>
ARTICLE NUMBER <b>10886</b>
CATEGORY <b>Decoration</b>

FABRIC WIDTH <b>300 cm</b> ↑↓
MATERIAL <b>52 % PES , 48 % PES CS (incl. 52 % recycled PES)</b>
MARTINDALE

PROPERTIES   
CARE INSTRUCTIONS     

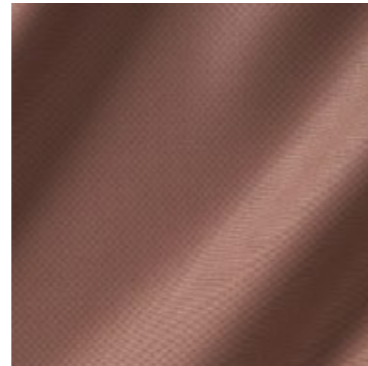
This elegant and softly falling satin is the latest development of our successful classic SOLICE, now with a silk matte surface. Like its predecessor, SOLICE MAT RE FR is flame retardant. However, for this new quality a 52% recycled polyester yarn is used, which is obtained from used PET bottles, in order to place as little as possible a strain on our environment whilst still maintaining high functional demands.



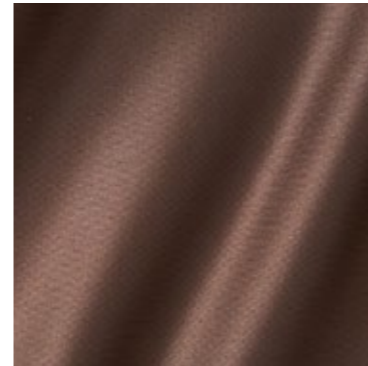
10886-443



10886-445



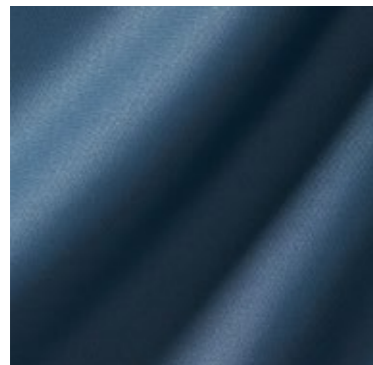
10886-447



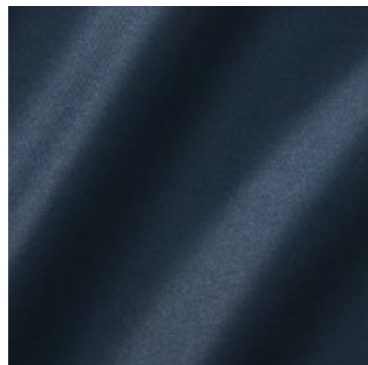
10886-448



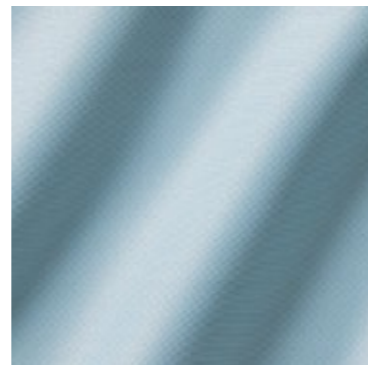
10886-555



10886-557



10886-559



10886-562



10886-563



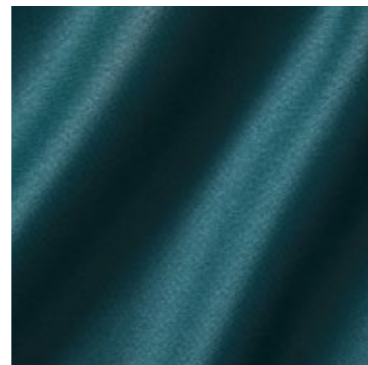
10886-663



10886-665



10886-672



10886-679



10886-773



10886-777



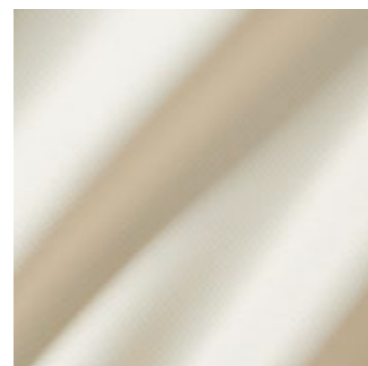
10886-787



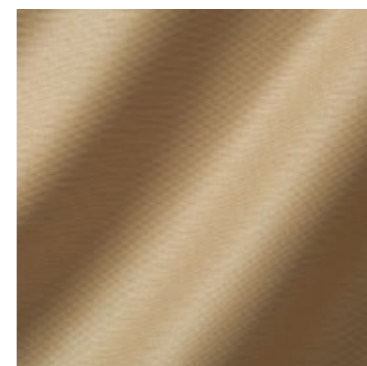
10886-813



10886-822



10886-882



10886-884

OVERVIEW

**ZIMMER + ROHDE**

NAME  
**Solice MAT RE FR**

ARTICLE NUMBER  
**10886**

CATEGORY  
**Decoration**

FABRIC WIDTH  
**300 cm** ↑ ↓

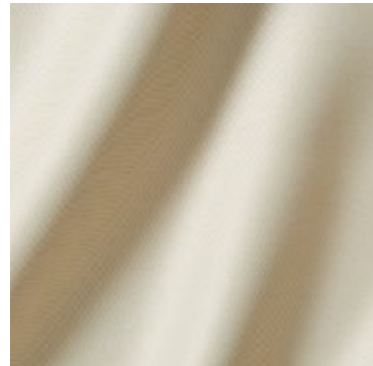
MATERIAL  
**52 % PES , 48 % PES CS  
(incl. 52 % recycled PES)**

MARTINDALE

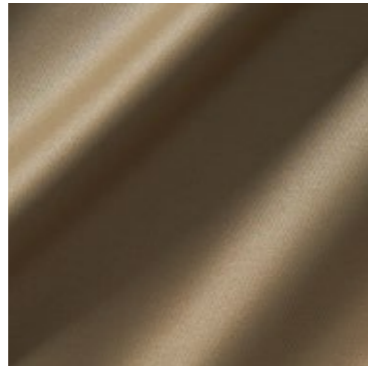
PROPERTIES  
🔊 🔥 ♻️

CARE INSTRUCTIONS  
🧺 60°C ⚡ 🧺 🧺 🧺

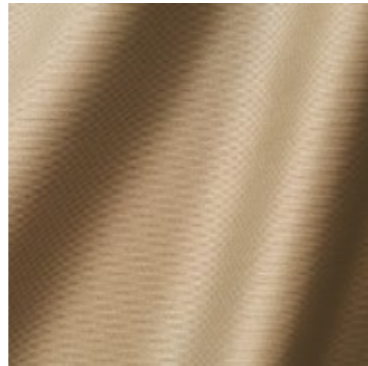




10886-893



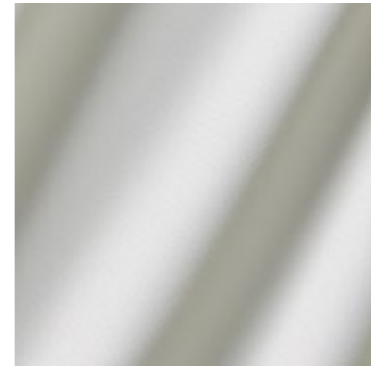
10886-895



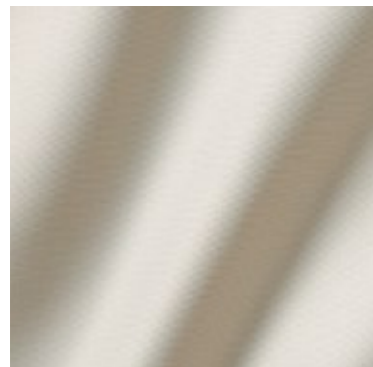
10886-896



10886-980



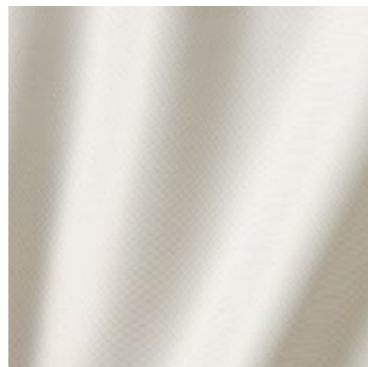
10886-981



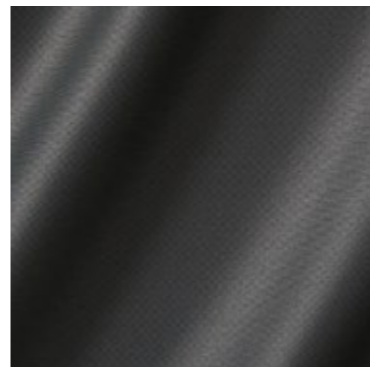
10886-983



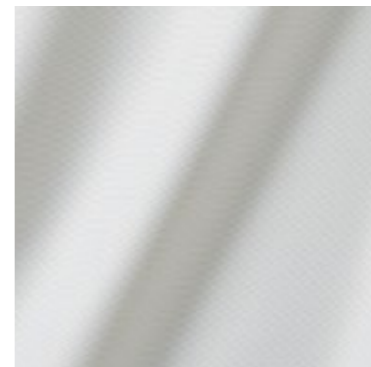
10886-984



10886-985



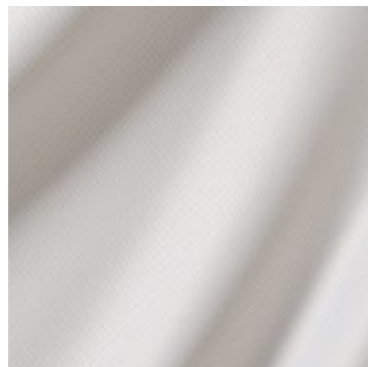
10886-989



10886-991



10886-992



10886-993



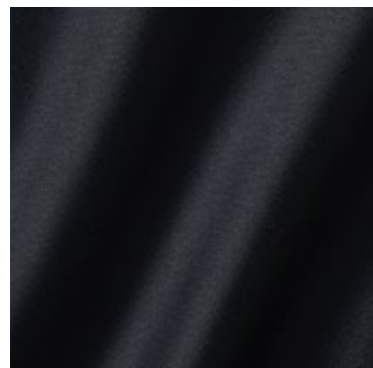
10886-996



10886-997



10886-998



10886-999

OVERVIEW

**ZIMMER + ROHDE**

NAME  
**Solice MAT RE FR**

ARTICLE NUMBER  
**10886**

CATEGORY  
**Decoration**

FABRIC WIDTH  
**300 cm** ↑↓

MATERIAL  
**52 % PES , 48 % PES CS  
(incl. 52 % recycled PES)**

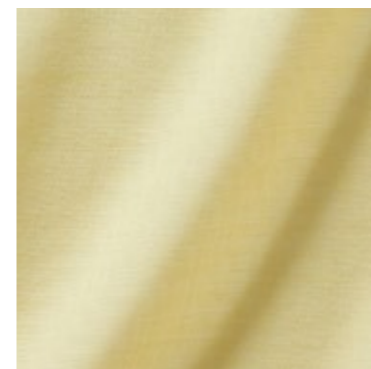
MARTINDALE

PROPERTIES  
🔊 🔥 ♻️

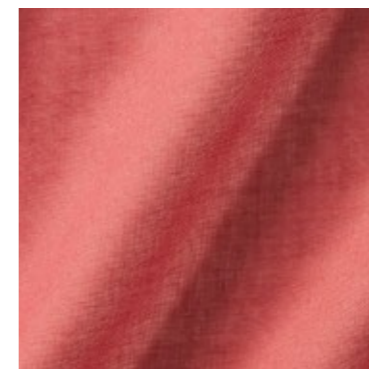
CARE INSTRUCTIONS  
🧺 60°C 🌟 🧺 🧺 🧺



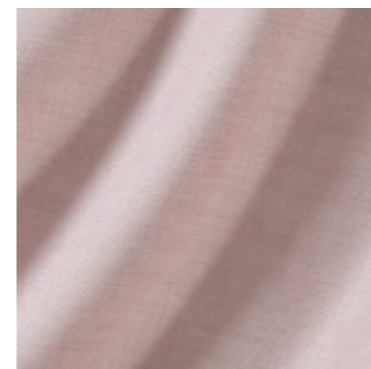
# Ultra Plus RE FR



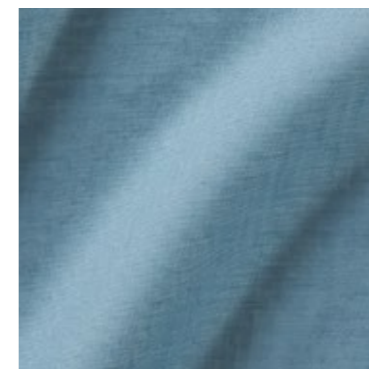
10887-115



10887-337



10887-445



10887-556

OVERVIEW

**ZIMMER + ROHDE**

NAME <b>Ultra Plus RE FR</b>
ARTICLE NUMBER <b>10887</b>
CATEGORY <b>Sheers</b>

FABRIC WIDTH <b>310 cm</b> ↑↓
MATERIAL <b>100 % PES Trevira CS recycled</b>
MARTINDALE

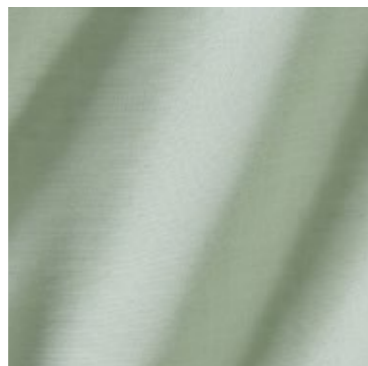
PROPERTIES 
CARE INSTRUCTIONS 

ULTRA PLUS RE FR is the latest development of our successful classic ULTRA. This new, translucent quality bathes every room in pleasantly soft light. With a railroded fabric height of approx. 310 cm, ULTRA PLUS is even slightly higher than its popular predecessor ULTRA.

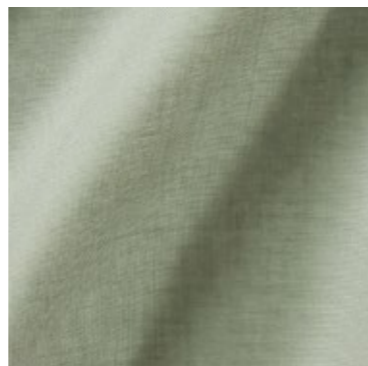
OVERVIEW



10887-594



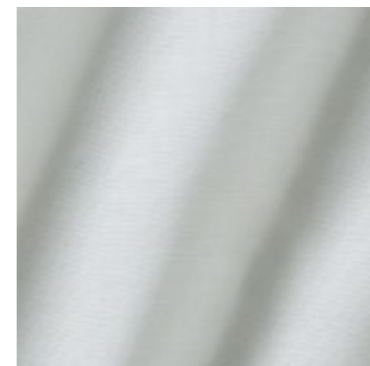
10887-775



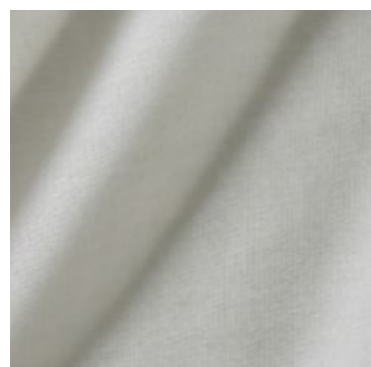
10887-777



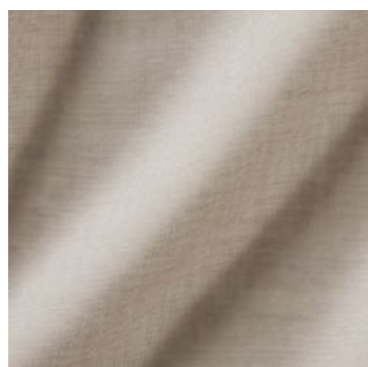
10879-882



10887-883



10887-884



10887-886



10887-900



10887-981



10887-990



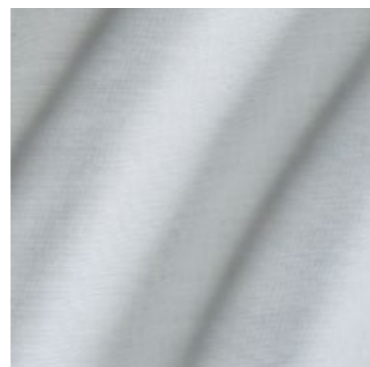
10887-992



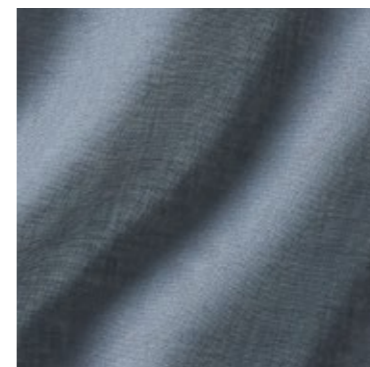
10887-993



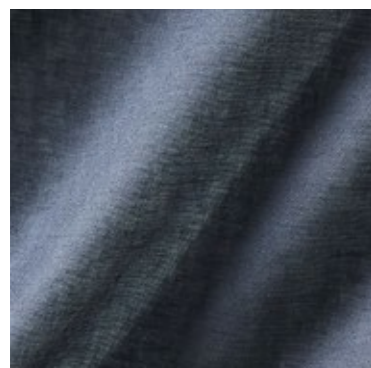
10887-994



10887-995



10887-998



10887-999

**ZIMMER + ROHDE**

NAME <b>Ultra Plus RE FR</b>
ARTICLE NUMBER <b>10887</b>
CATEGORY <b>Sheers</b>

FABRIC WIDTH <b>310 cm</b> ↑↓
MATERIAL <b>100 % PES Trevira CS recycled</b>
MARTINDALE

PROPERTIES 
CARE INSTRUCTIONS 

# Highland RE

The exquisite combination of two very opposite materials makes this restrained decorative fabric a textile for real connoisseurs. A wonderful symbiosis of plant based linen and animal based wool is used in this casual melange fabric. Linen, known for its cooling effect in summer perfectly mixes with wool, which provides pleasant comfort on cold days. A sustainable product in every respect.



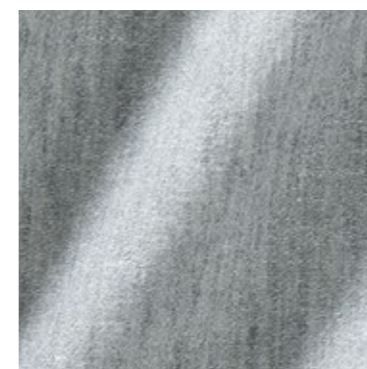
10888-882



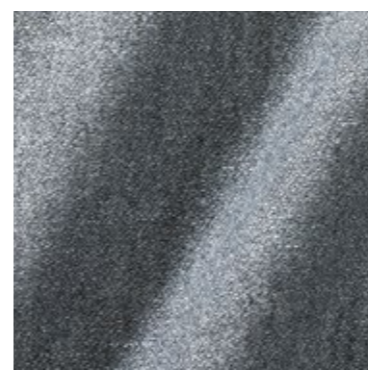
10888-890



10888-992



10888-994



10888-996



10888-998

## ZIMMER + ROHDE

NAME <b>Highland RE</b>
ARTICLE NUMBER <b>10888</b>
CATEGORY <b>Decoration</b>

FABRIC WIDTH <b>290 cm</b> ↑↓
----------------------------------

MATERIAL <b>66 % WO, 34 %LI incl. 66 % recycled wool</b>
---

MARTINDALE
------------

PROPERTIES <b>Recommend puddle on the floor</b>

CARE INSTRUCTIONS 
-----------------------



# Sahari



10889-884



10889-892



10889-990




10889-991

OVERVIEW

ZIMMER + ROHDE

NAME <b>Sahari</b>
ARTICLE NUMBER <b>10889</b>
CATEGORY <b>Decoration</b>

FABRIC WIDTH <b>320 cm</b> ↑↓
MATERIAL <b>73 % CO, 27 % LI</b>
MARTINDALE

PROPERTIES  
CARE INSTRUCTIONS     

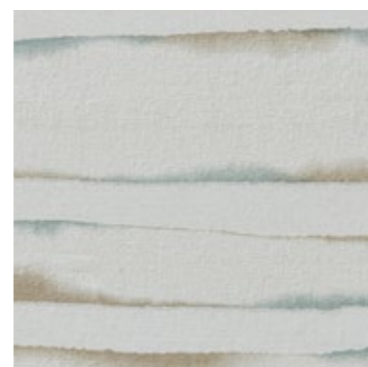
The rhythmic lines of this all-over design are inspired by the gentle topography of the sand dunes in the Sahara. The very short cut Scherli fringes on the front create an attractive textile relief despite the lightness of the fabric. The manual dyeing process creates a vivid colour effect and underlines the artisan character of this natural product.



# Scenery



10890-595



10890-783



10890-991

## ZIMMER + ROHDE

NAME <b>Scenery</b>
ARTICLE NUMBER <b>10890</b>
CATEGORY <b>Sheers</b>

FABRIC WIDTH <b>300 cm</b> ↑↓
MATERIAL <b>47 % PES, 28 % CV, 25 % LI</b>
MARTINDALE

PROPERTIES 
CARE INSTRUCTIONS 

Fine watercolour lines run horizontally in soft wave movements over this natural-looking burnout print, drawing the abstract suggestion of a vast landscape with delicate colour gradients.

# Birchwood

**ZIMMER + ROHDE**

NAME

**Birchwood**

ARTICLE NUMBER

**10891**

CATEGORY

**Decoration**

FABRIC WIDTH

**300 cm**

MATERIAL

**86 % CO, 14 % PES**

MARTINDALE

PROPERTIES



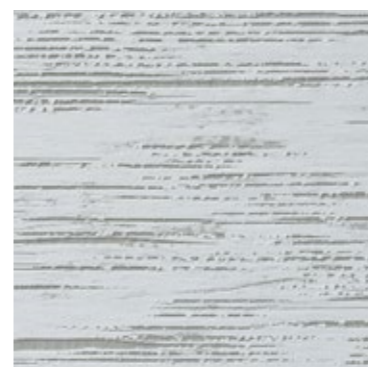
CARE INSTRUCTIONS



10891-888



10891-900



10891-984



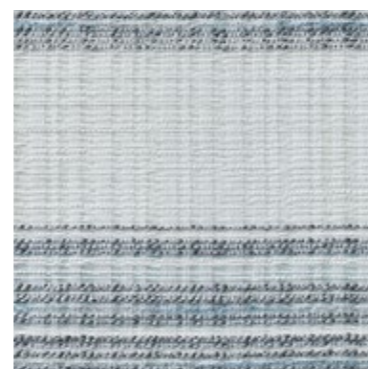
10891-992

This extraordinary textile is modelled on the unmistakable relief of birch bark and has a particularly vivid effect through the combination of several weaving and printing techniques. Against the light, the different transparencies create a lively play of shadows.



# Sierra

**ZIMMER + ROHDE**



10892-696



10892-892



10892-994



10892-998

NAME <b>Sierra</b>
ARTICLE NUMBER <b>10892</b>
CATEGORY <b>Sheers</b>

FABRIC WIDTH <b>300 cm</b>
MATERIAL <b>64 % PES, 31,5 % PAN, 4 % CO, 0,5 % WO</b>
MARTINDALE

PROPERTIES <b>Recommend puddle on the floor</b>
CARE INSTRUCTIONS 

SIERRA is a semi-transparent structured fabric with horizontal block stripes, for which different yarns are combined. Clear and natural at the same time, it gives large window areas a relaxed character.





# Kathmandu

OVERVIEW

**ZIMMER + ROHDE**



10893-454



10893-876



10893-992



10893-998

NAME <b>Kathmandu</b>
ARTICLE NUMBER <b>10893</b>
CATEGORY <b>Decoration</b>

FABRIC WIDTH <b>140 cm</b>
MATERIAL <b>75 % CO, 25 % WO</b>
MARTINDALE

PROPERTIES
CARE INSTRUCTIONS 

The plentiful texture of this casual jacquard weave is inspired by the rough landscape of a high mountain range. The soft feel and flowing fall of the natural wool and cotton yarns are in stark contrast to this, giving KATHMANDU a soft cosiness to the room, whether as a window decoration or throw blanket.

# Canyon

The fine horizontal stripes of CANYON play with the variations in multi-coloured layers of rock, as we find them in the deeply cut canyons of famous mountain formations and deserts. The transparent base fabric lends lightness to the straight stripes and effortlessly lays itself into a softly flowing wave movement at the window.



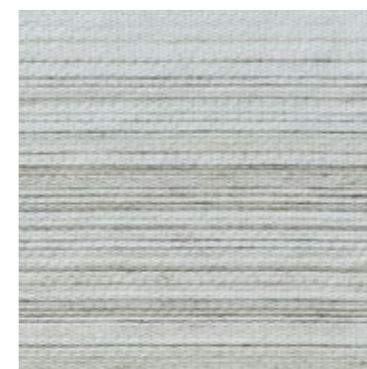
10894-838



10894-865



10894-898



10894-890



10894-992

## ZIMMER + ROHDE

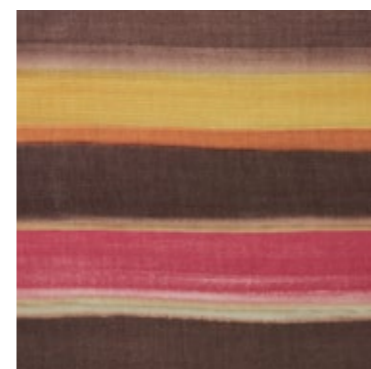
NAME <b>Canyon</b>
ARTICLE NUMBER <b>10894</b>
CATEGORY <b>Decoration</b>

FABRIC WIDTH <b>304 cm</b>
MATERIAL <b>55 % PES, 42 % PAN, 3 % LI</b>
MARTINDALE

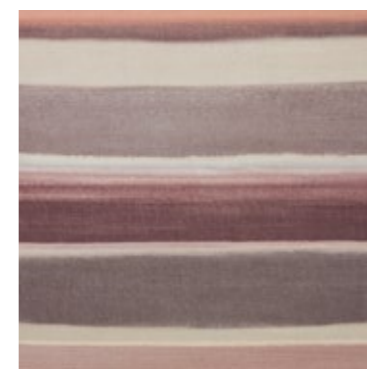
PROPERTIES  
CARE INSTRUCTIONS    



# Panorama RE FR



10895-146



10895-494



10895-564



10895-982

OVERVIEW

**ZIMMER + ROHDE**

NAME <b>Panorama RE FR</b>
ARTICLE NUMBER <b>10895</b>
CATEGORY <b>Sheers</b>

FABRIC WIDTH <b>310 cm</b> ↑↓
MATERIAL <b>100 % PES FR (incl. 37 % recycled PES FR)</b>
MARTINDALE

PROPERTIES 
CARE INSTRUCTIONS 

Like a blurred landscape in the distance or a flickering mirage, PANORAMA RE FR plays with a vibrating colour gradient. Watercolour stripes form the base of the panel design and continue towards the top. The repeat extends over the entire height of the fabric and runs endlessly widthways.



# Latenight FR

OVERVIEW

**ZIMMER + ROHDE**

NAME

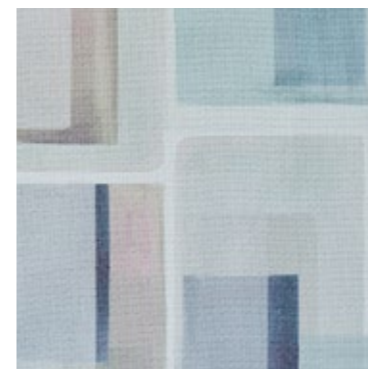
**Latenight FR**

ARTICLE NUMBER

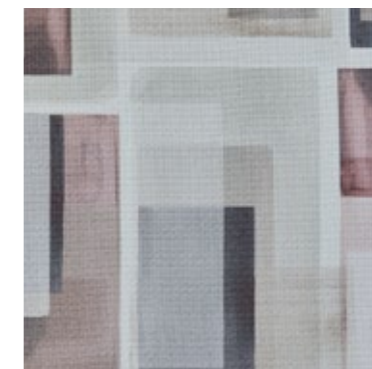
**10896**

CATEGORY

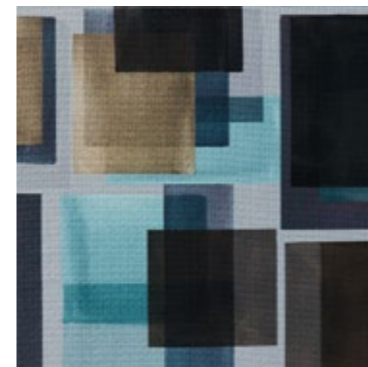
**Decoration**



10896-694



10896-893



10896-898



10896-981

FABRIC WIDTH

**300 cm** ↑↓

MATERIAL

**100 % PES FR**

MARTINDALE

PROPERTIES



CARE INSTRUCTIONS



In contrast to the base fabric used, a very densely woven blackout quality, the LATENIGHT FR design has a strikingly light appearance. Printed on the front side with a picturesque abstract urban landscape, the reverse side of the flame retardant dimmer shows a plain texture in a corresponding colour.



# Pamir RE

OVERVIEW

**ZIMMER + ROHDE**



10897-114



10897-285



10897-448




10897-494

NAME <b>Pamir RE</b>
ARTICLE NUMBER <b>10897</b>
CATEGORY <b>Upholstery</b>

FABRIC WIDTH <b>140 cm</b>
-------------------------------

MATERIAL <b>45 % CO, 30 % PAN, 20 % CV, 5 % PA incl. 45 % recycled CO</b>
--

MARTINDALE <b>58.000</b>
-----------------------------

PROPERTIES 
---

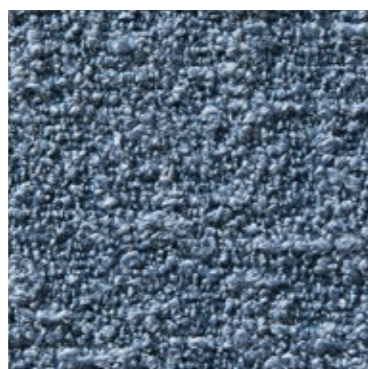
CARE INSTRUCTIONS 
--

The extensive landscape of the Pamir Mountains, also known as the "roof of the world", was the inspiration for this elegant bouclé upholstery fabric. It brings elegance and naturalness into perfect balance in 15 colour variations. From a distance, a plain fabric, but close up a fine, curly relief unfolds with a pleasantly soft feel.

**ZIMMER + ROHDE**



10897-554



10897-555



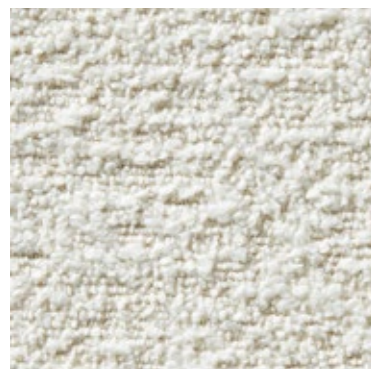
10897-665



10897-693



10897-795



10897-881



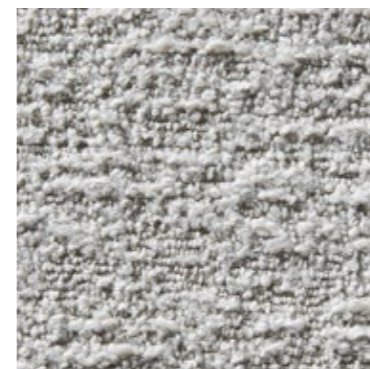
10897-883



10897-884



10897-910





10897-993



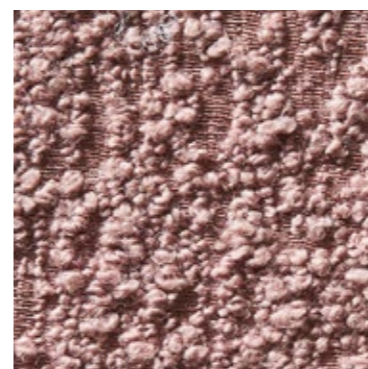
10897-996

NAME <b>Pamir RE</b>
ARTICLE NUMBER <b>10897</b>
CATEGORY <b>Upholstery</b>

FABRIC WIDTH <b>140 cm</b>
MATERIAL <b>45 % CO, 30 % PAN, 20 % CV, 5 % PA incl. 45 % recycled CO</b>
MARTINDALE <b>58.000</b>
PROPERTIES 
CARE INSTRUCTIONS 

# Nomad RE

NOMAD's woolly soft, three-dimensional texture reflects the original characteristics of a highland plain where mountain plants, mosses, lichens and rocky areas form a harmonious carpet of colour nuances and textures. When you touch it, you immediately feel the high natural fiber content of this hard-wearing mixed fabric.



10898-444



10898-556



10898-785





10898-910



10898-982

## ZIMMER + ROHDE

NAME <b>Nomad RE</b>
ARTICLE NUMBER <b>10898</b>
CATEGORY <b>Upholstery</b>

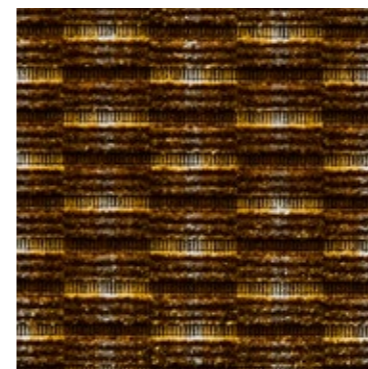
FABRIC WIDTH <b>140 cm</b>
MATERIAL <b>30 % CO, 20 % WO, 20 % CV, 15 % PAN, 15 % PA incl. 30 % recycled CO</b>
MARTINDALE <b>50.000</b>
PROPERTIES 
CARE INSTRUCTIONS 



# Infinity Zoom

OVERVIEW

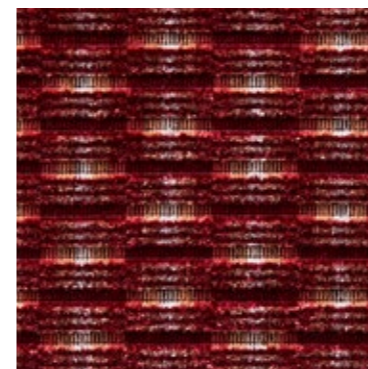
**ZIMMER + ROHDE**



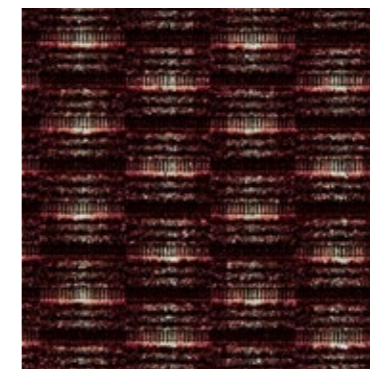
10899-185



10899-285









10899-336



10899-347

NAME <b>Infinity Zoom</b>
ARTICLE NUMBER <b>10899</b>
CATEGORY <b>Upholstery</b>

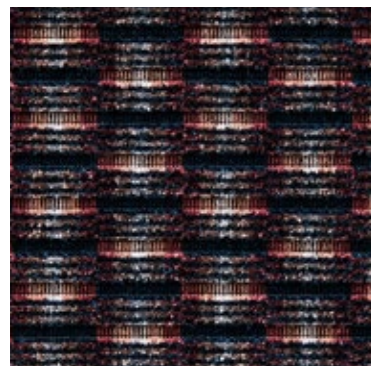
FABRIC WIDTH <b>148 cm</b>
MATERIAL <b>Ground 90%PES 10%PAN, Pile 100%PAN</b>
MARTINDALE <b>100.000</b>

PROPERTIES  
CARE INSTRUCTIONS     

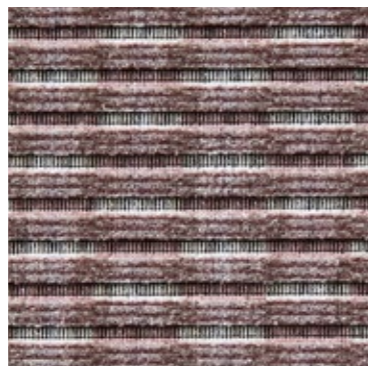
The interplay of the finely graded colour gradient in combination with the high-low relief of the velour draws a small linear and elegant pattern onto the luxurious surface of this universally applicable upholstery fabric. INFINITY ZOOM also has all the functional properties of our successful INFINITY product family, it is very low-maintenance, washable, hard-wearing and has above-average non-fade properties.



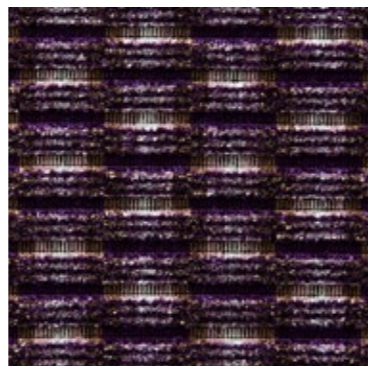
OVERVIEW



10899-457



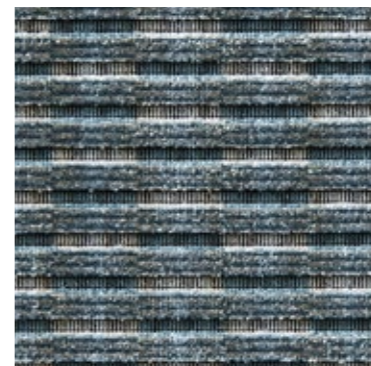
10899-484



10899-486



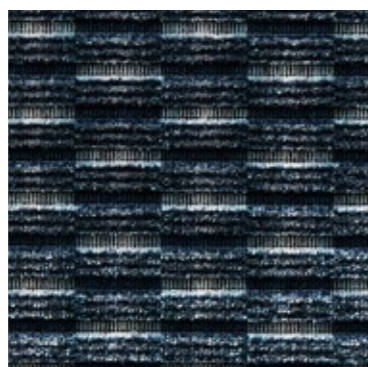
10899-556



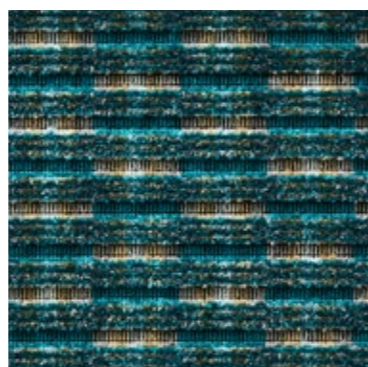
10899-565



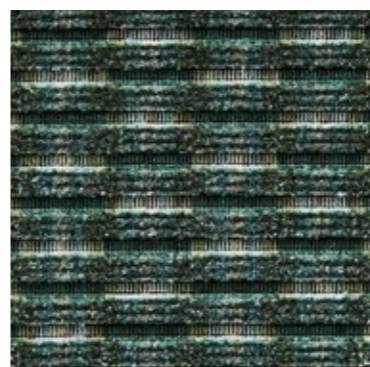
10899-586



10899-597



10899-686



10899-775



10899-812



10899-883



10899-985



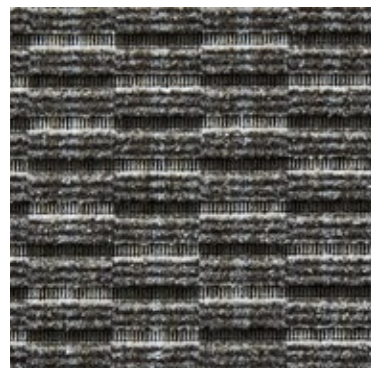
10899-991



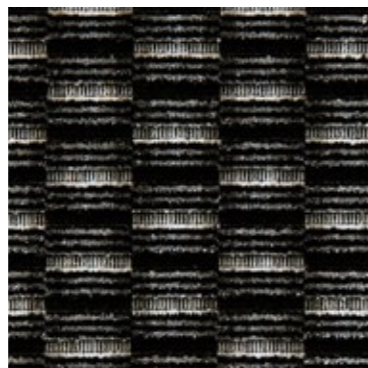
10899-992



10899-993



10899-996









10899-998

**ZIMMER + ROHDE**

NAME <b>Infinity Zoom</b>
ARTICLE NUMBER <b>10899</b>
CATEGORY <b>Upholstery</b>

FABRIC WIDTH <b>148 cm</b>
MATERIAL <b>Ground 90%PES 10%PAN, Pile 100%PAN</b>
MARTINDALE <b>100.000</b>

PROPERTIES  
CARE INSTRUCTIONS     

# Parc FR

**ZIMMER + ROHDE**

NAME

**Parc FR**

ARTICLE NUMBER

**10900**

CATEGORY

**Upholstery**

FABRIC WIDTH

**142 cm**

MATERIAL

**100 % PES FR**

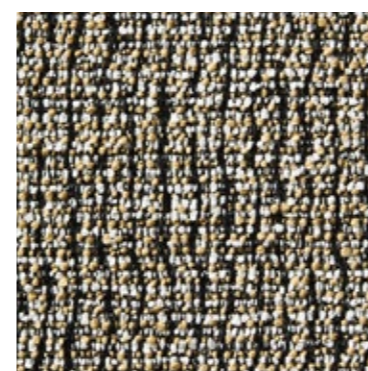
MARTINDALE

**63.000**

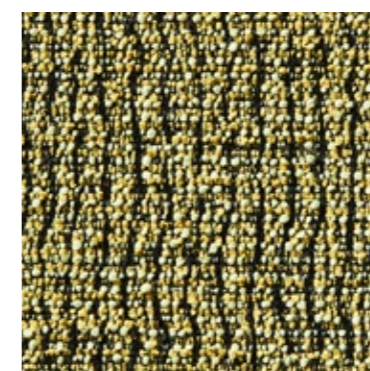
PROPERTIES



CARE INSTRUCTIONS



10900-185



10900-195



10900-284

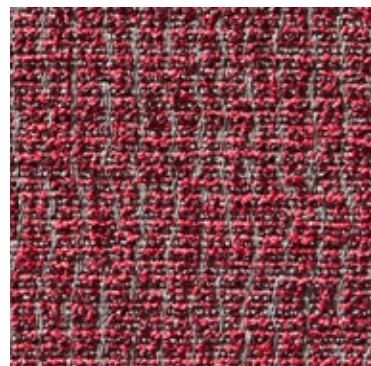


10900-295

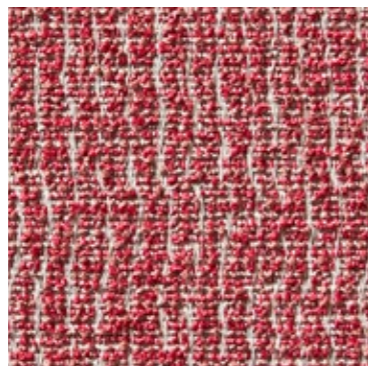


This fine bouclé weave with its subtle design is reminiscent of the sandy surfaces of Japanese Zen gardens, which are lovingly decorated with meditative line patterns using wooden rakes. PARC FR is very hard-wearing, washable and flame-retardant, making it ideal for heavily used upholstery surfaces in both private homes and public spaces.

OVERVIEW



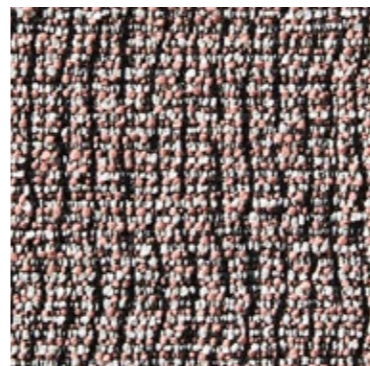
10900-336



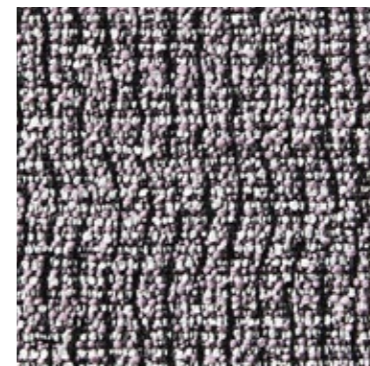
10900-385



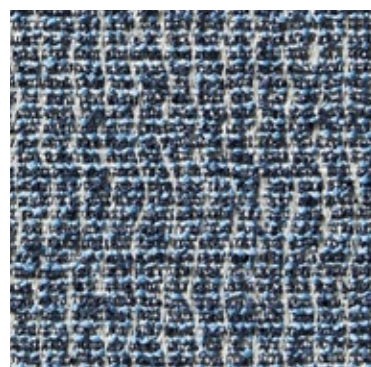
10900-397



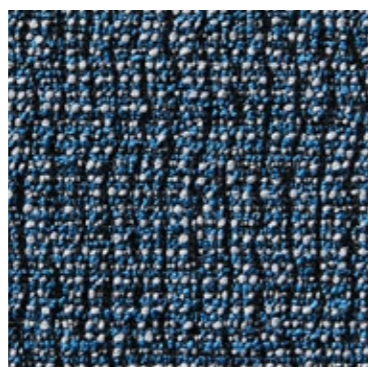
10900-435



10900-495



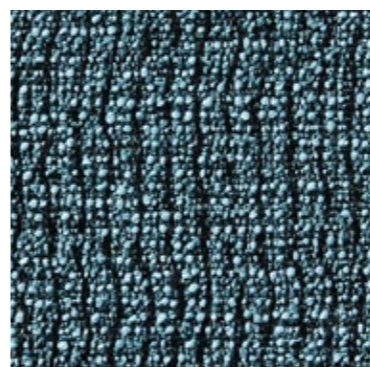
10900-555



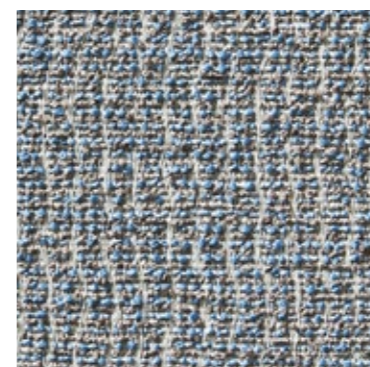
10900-557



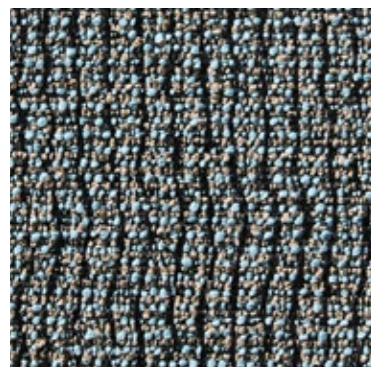
10900-565



10900-567



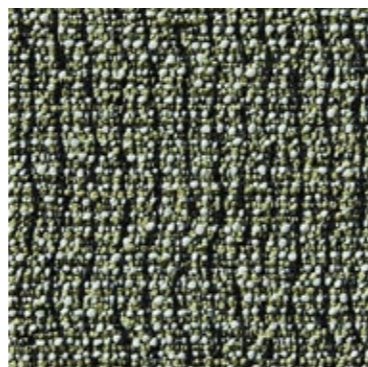
10900-585



10900-586



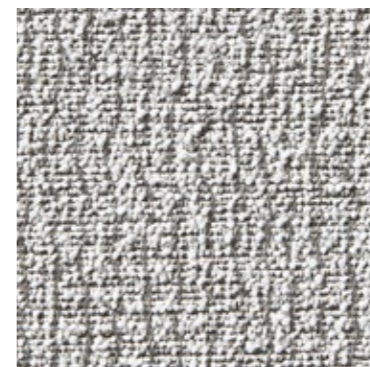
10900-656



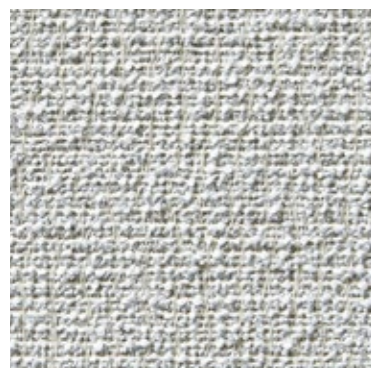
10900-797



10900-884



10900-893



10900-912



10900-954



10900-981



10900-983



10900-985

**ZIMMER + ROHDE**

NAME <b>Parc FR</b>
ARTICLE NUMBER <b>10900</b>
CATEGORY <b>Upholstery</b>

FABRIC WIDTH <b>142 cm</b>
MATERIAL <b>100 % PES FR</b>
MARTINDALE <b>63.000</b>

PROPERTIES 
CARE INSTRUCTIONS     

OVERVIEW



10900-986



10900-987



10900-994



10900-998

**ZIMMER + ROHDE**

NAME <b>Parc FR</b>
ARTICLE NUMBER <b>10900</b>
CATEGORY <b>Upholstery</b>

FABRIC WIDTH <b>142 cm</b>
MATERIAL <b>100 % PES FR</b>
MARTINDALE <b>63.000</b>

PROPERTIES 
CARE INSTRUCTIONS 