



ZIMMER+ROHDE



BOTANICAL GARDEN | Collection Spring 2020

The botanical garden is a magical place, with a sea of exotic plants and historic greenhouses whose windows allow in the scattered light. As if looking into a snow globe, you embark upon a journey through miniature, manicured versions of alluring deserts, magnificent primeval forests and mysterious steppes, passing through several eras of landscape gardening with numerous stylistic elements drawn from foreign cultures. Here and there, you might discover exotic butterflies and the colourful plumage of birds in the multi-layered interplay of lush green tones. And while the senses are engaged, trails of discovery provide the stranger with some comforting structure.

The garden becomes a place of inner peace, bringing order and balance to the wildness of nature. In parks dotted with whimsical pavilions and grandiose greenhouses from the turn of the century, you embark on a romantic journey through time and escape everyday life for a while in hedge mazes and cloistered walkways. The BOTANICAL GARDEN collection is dedicated to this interplay between stimulation and relaxation, thinking and feeling, wildness and order.

The extravagant colours of wild orchids, passion flowers and cactus blossoms, their vibrancy complementing the depth of the monochrome green background, serve as the inspiration for its emotive range of hues. The elegant and ornamental architecture of the botanical garden, the lush imagery of Mediterranean vegetation and the arid steppe and desert landscapes in their natural state form the basis of creative patterns and detailed textures.

Just as a botanical garden cultivates and brings order to the lush wildness of flora and fauna, the lavish and emotive design of this collection is based on cutting-edge textile technologies and delivers all the added features customers nowadays demand. The collection's intellectual journey through time begins in the first botanical garden of the 16th century and culminates in the smart rooms of the future ...



ZIMMER+ROHDE

BOTANICAL GARDEN | Collection Spring 2020

Spirit | 10838

63 Colourways
35% PES, 25% PAN,
10% CO, 5% LI, 25% CV
Martindale: 50.000
Width: 140 cm



SPIRIT draws you in with its subtle horizontal texture and iridescent tones. An ultra-fine bouclé yarn is used alternately with a velvety chenille yarn to make it particularly pleasant to the touch. Thanks to its stain-resistant finish, its durability and the broad range of 63 colours it is available in, SPIRIT can be used in any application.

Infinity Cord | 10839

40 Colourways
Ground: 83% PES, 17% PAN
Pile: 100% PAN
Martindale: 50.000
Width: 148 cm



The CORD rib is a true classic in the Zimmer + Rohde line of upholstery fabrics. It comes in our impressive INFINITY quality with the many advantages this brings. This means it is durable, light-fast and easy to clean. With its vibrant range of colours, INFINITY CORD transforms any piece of furniture into a stylish highlight.

Kakadu | 10840

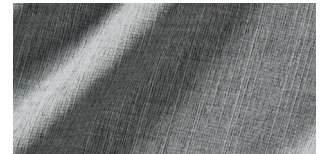
44 Colourways
100% PES
Width: 145 cm



The rich, vibrant colours of tropical birds served as the inspiration for the broad range of bright colours found in KAKADU, a modern decorative velour with a matt, shimmering surface and a velvety soft feel and drape.

Laos FR | 10841

17 Colourways
100% PES CS
Width: 298 cm



The colours are made vivid through the interplay of the elegant satin surface with its delicate twine structure. The room-height decorative fabric is flame-retardant, making it suitable for use by homeowners and contractors in a wide variety of applications.

Moonlight FR | 10842

13 Colourways
100% PES FR,
Coat: 100% PES FR
Collusion: 100%
Width: 300 cm



MOONLIGHT FR produces a natural look that conveys a modern clarity. The delicate fabric with its herringbone pattern and natural look also functions as a blackout material that can completely darken a room at any time of day. The fabric is flame-retardant, making it an excellent choice for use in the home or in public spaces. The decorative fabric is pleasantly reserved and noise-absorbent.



ZIMMER+ROHDE

Night Bloom FR | 10843

30 Colourways
100% PES FR
Collusion: 100%
Width: 290 cm



Inspired by the vibrant colours found in tropical flowers, this elegant decorative velour turns daytime into night by allowing you to shut out the sun in the room whenever you like. NIGHT BLOOM FR is flame-retardant, making it suitable for use in private homes, as well as in hotel rooms, lobbies, lecture halls and all public areas where fire safety is an important issue. Last but not least, the velvety all-rounder has excellent sound-absorbing properties.

Bloc | 10844

5 Colourways
70% CO, 30% LI
Width: 132 cm



After the fabric has been woven, the cotton/linen background is finished by hand in two further steps. Firstly, the print motif is applied with hand patterns and then square fields are stitched using tucks. The result is a casual, modern decorative fabric with a natural handcrafted look and feel.

Mano | 10845

6 Colourways
50% CO, 20% LI,
16% CV, 14% PES
Width: 155 cm



MANO is the result of the seamless interplay of craftsmanship, artistic expressiveness and modern manufacturing techniques. Pleated fleece strips are woven in combination with natural materials to form a striking bark-like structure. The innovative composite material and a special dyeing technique combine to create an unmistakable vintage look.

Willow FR | 10846

16 Colourways
53% PES FR, 45% PES CS
2% CV
Width: 330 cm



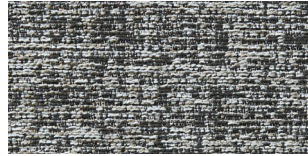
Though WILLOW FR is made of flame-retardant polyester, the light Jacquard fabric has a fine woollen quality and the softness and flowing drape of natural fibre. The woven, tone-in-tone craquelure structure and subtle blend of yarns are inspired by botanical microstructures.



ZIMMER+ROHDE

Patio | 10847

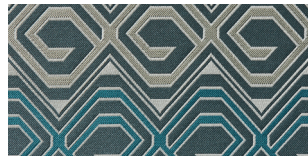
15 Colourways
85% PP, 15% PES
Width: 140 cm
Martindale: 46.000



PATIO is a durable fabric for indoor and outdoor applications. The all-rounder is resistant to all types of weather, sea/chlorinated water and even sunscreen. Due to the abstract all-over pattern and carefully designed fabric structure, PATIO is suitable for both round and square-shaped furniture.

Hanbury | 10848

6 Colourways
82% CV, 18% PES
Width: 145 cm
Martindale: 30.000



The HANBURY upholstery is a modern interpretation of ornamental patterns found in classical architecture. The multi-coloured interplay of matt and shimmering weave effects lends the elegant satin fabric its sense of depth and decorative colour scheme.

Orangery | 10849

7 Colourways
73% CV, 27% PES
Width: 148 cm
Usable width: 142 cm
Martindale: 40.000



The two-tone Jacquard fabric with tropical palm trees, foliage and birds-of-paradise is reminiscent of an orangery you would find at a country estate in the Mediterranean region. It features an attractive combination of a matt background and elegantly shimmering motifs in satin weave, which really accentuate their colour tones.

Palmhouse | 10850

6 Colourways
100% CO
Width: 160 cm
Usable width: 147 cm



PALMHOUSE is inspired by the lush thicket of plants found in tropical hothouses. The abstract imagery and clear, contrasting colouring of the aloe vera leaves help produce the dynamic design of the lavish print motif as well as its appealing all-over effect, which make it easy to integrate into any modern room concept.

Tropical | 10851

3 Colourways
55% CV, 23% LI, 22% PES
Width: 140 cm



TROPICAL celebrates the lavish shapes and forms of vegetation found in the tropics. Produced as an elaborate Jacquard weave on an ultra-fine silk-like warp, decorative leaf and flower shapes intertwine on the elegant satin background. After the fabric has been woven, a soft brush finish is applied, giving it a modern, gently flowing look and striking patina.



ZIMMER+ROHDE

Wood Grain | 10852

11 Colourways

Ground: 100% CO

Embroidery: 100% CV

Width: 140 cm

Usable width: 129 cm



This elegant horizontal embroidery is the modern take on the woodgrain effect. Two embroidery colours interplay with the base colour of the elegant cotton satin. Draped in lavish waves, the horizontal pattern really comes into its own.

Serene FR | 10853

7 Colourways

100% PES CS

Width: 300 cm



The balanced interplay of different yarns, combined with the intricate wave motion of the fine jacquard texture, gives the translucent decorative fabric a natural appearance. SERENE FR is made of 100 per cent flame-retardant polyester, is washable, easy to clean and can therefore be used in any application at home or in public spaces.

Dashy | 10854

4 Colourways

100% PES

Width: 305 cm

Usable width: 293 cm



DASHY is an inspiring blend of the coarse texture of hand-woven mesh fabrics and a modern lace appearance. Two-tone fabric ribbons with diagonal striping were brought together using an innovative appliqué technique and lend the translucent in-between an expressive look.

Cliff FR | 10855

5 Colourways

100% PES CS

Width: 295 cm



CLIFF's FR transparent chequered structure lends the flame-retardant leno fabric its expressive look despite the high level of transparency it delivers. Its modern pattern is made specifically for a highly linear window decoration needed to create a contemporary, minimalist style.



ZIMMER+ROHDE

Marley | 10856

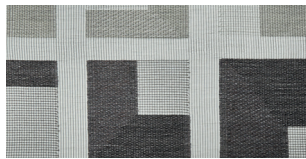
7 Colourways
70% PES, 30% LI
Width: 288 cm



Linen with polyester fibres was processed to create the yarn with an ultra-soft, elongated flamé effect that is used in MARLEY. Its natural irregularity works particularly well in the open structure of the semi-transparent leno fabric, which is easy to drape.

Shadowplay | 10857

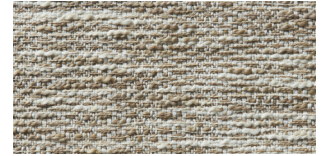
3 Colourways
44% PES, 32% PAN, 24% LI
Width: 304 cm



SHADOWPLAY plays with the square motif and its proportions. The thick maze of geometric shapes set against the highly transparent background is graded in different colour shades, underlining the rhythmic sensation created by the pattern. The Scherli technique creates opaque and transparent areas that produce a striking interplay of light and shadow.

Baobab | 10858

9 Colourways
100% CO
Width: 134 cm



The handmade cotton fabric draws you in with its delightful irregularity and soft flowing drape. A two-coloured flamé yarn in the weft creates a picturesque horizontal ikat structure which, in combination with the grainy weave, creates an expressive, handcrafted texture. The fabric takes its name from the baobab tree which is native to the African savannah and known for its commanding presence on the landscape – just like this delightful fabric commands your attention.

Perspective | 10859

4 Colourways
57% CO, 43% PES
Width: 300 cm



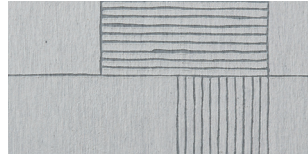
PERSPECTIVE's geometric Devoré design plays off three vivid colours while retaining its thickness and transparent look. The result is an abstract, three-dimensional effect that produces an elegant shadow play near the window. Particularly striking are the unusually soft feel and the flowing drape of the base fabric..



ZIMMER+ROHDE

Sketch | 10860

4 Colourways
76% CO, 24% PES
Width: 320 cm



Though this modern decorative Devoré is opaque, it has a beautiful transparent look when held against the light. The clear graphic effect of the pattern is broken up by the sketch-like character of the hand-drawn lines.

Flex FR | 10863

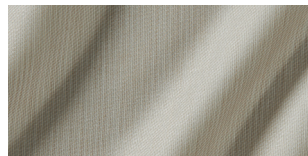
6 Colourways
100% PES FR
Width: 315 cm



FLEX FR stands out visually from conventional transparent fabrics due to its innovative x-weave. The special feature of this contemporary texture is clearly highlighted by the use of a cord-like yarn.

Lucent FR | 10861

16 Colourways
100% PES CS
Width: 300 cm



This elegant, gently flowing fabric made of retardant polyester bathes any room in soft, bright light and balances transparency with the need for privacy and protection from the glare of sunlight.

Mirador | 10864

5 Colourways
61% CO, 28% PAN,
8% PES, 3% PA
Width: 142 cm
Martindale: 20.000



This exquisitely soft, decorative reference fabric is like the view from a vantage point looking down onto the rippling heat waves coming off of a shimmering landscape. The lavish Jacquard texture, woven in a complex yarn composition that combines a glittery metallic effect with a woollen bouclé yarn, radiates a warm and cosy feel.

Agave | 10862

6 Colourways
100% PES
Width: 300 cm



AGAVE is inspired by the natural look of dried sisal fibres harvested from the agave plant. Thanks to the three-layer fabric structure, individual threads can float between the two outer fabric layers and lend the semi-transparent decorative fabric its handcrafted look.