

ZR

ZIMMER+ROHDE



Textiles | Wallcoverings | Furnitures | Accessoires



1 Night Bloom FR 884 | 2 Orangery 185



ZIMMER+ROHDE

BOTANICAL GARDEN

Der Botanische Garten ist ein magischer Ort mit seinem Meer aus exotischen Pflanzen und historischen Gewächshäusern. Extravagante Blütenfarben komplementär leuchtend vor einer grünen Kulisse bilden die Inspiration zu emotionalen Farbpaletten. Ornamentale Bauten, üppige südländische Vegetationen und natürlich trockene Steppen- und Wüstenlandschaften sind das Gerüst für schöpferische Dessins und tiefgründige Texturen.

Wie auch der Botanische Garten die sinnliche Wildheit der Flora und Fauna kultiviert und in eine methodische Ordnung bringt, steht das Design dieser Kollektion auf dem Fundament modernster Textiltechnologien und deckt alle heute notwendigen Leistungen ab. Die gedankliche Zeitreise dieser Kollektion beginnt im ersten Botanischen Garten des 16. Jahrhunderts und führt uns in die smarten Räume der Zukunft.

The botanical garden is a magical place with a sea of exotic plants and historic greenhouses. The extravagant colours of the flowers, their vibrancy complementing a green background, serve as the inspiration for its emotive range of hues. Ornamental buildings, lush Mediterranean vegetation and the arid steppe and desert landscapes in their natural state form the framework of creative patterns and detailed textures.

Just as a botanical garden cultivates and brings order to the lush wildness of flora and fauna, the design of this collection is based on cutting-edge textile technologies and delivers all the added features customers now demand. The collection's intellectual journey through time begins in the first botanical garden of the 16th century and culminates in the smart rooms of the future.

Le jardin botanique est toujours un lieu magique, avec son océan de plantes exotiques et ses serres historiques. Les couleurs extravagantes des fleurs – dont la luminosité est complémentaire avec le fond vert – inspirent des palettes de couleurs riches en émotions. L'architecture ornementale, la luxuriance de la végétation exotique et la sécheresse des paysages désertiques et des steppes inspirent des motifs créatifs et des textures sublimes.

De même que le jardin botanique cultive l'essence sauvage de la faune et de la flore et y apporte un ordre méthodique, le design de cette collection emploie les technologies textiles les plus modernes et comprend toutes les performances aujourd'hui essentielles pour les tissus. Le voyage dans le temps que nous fait vivre cette collection commence dans le premier jardin botanique du XVI^e siècle et nous emmène jusqu'aux espaces intelligents du futur.

Il giardino botanico è un luogo magico, con il suo mare di piante esotiche e serre storiche. Le stravaganti nuance floreali, dalla lucentezza complementare al verde di fondo, generano l'ispirazione per le trascinanti palette di colori. Strutture ornamentali, vegetazione meridionale lussureggiante e l'aridità di steppe e paesaggi desertici costituiscono l'ossatura per il motivo creativo e le texture penetranti.

Così come il giardino botanico coltiva la sensuale natura selvaggia di flora e fauna e la inserisce in un ordine metodico, il design di questa collezione si fonda sulle più moderne tecnologie tessili e si conforma a tutte le proprietà richieste al giorno d'oggi. L'ideale viaggio nel tempo di questa collezione inizia nel primo giardino botanico del XVI secolo e ci trasporta negli ambienti smart del futuro.



A ROMANTIC DESIGN JOURNEY THROUGH FOREIGN CULTURES AND THE MULTI-LAYERED INTERPLAY OF LUSH GREEN TONES.



1 Bloc 991 | 2 Infinity Cord 776 | 3 Infinity Cord 447 | 4 Infinity Cord 673 | 5 Infinity Cord 385 | 6 Infinity Cord 483 | 7 Spirit 998 | 8 Infinity Cord 114
Left Page: 1 Tropical 918 | 2 Infinity Cord 114



2

3

4

5

6

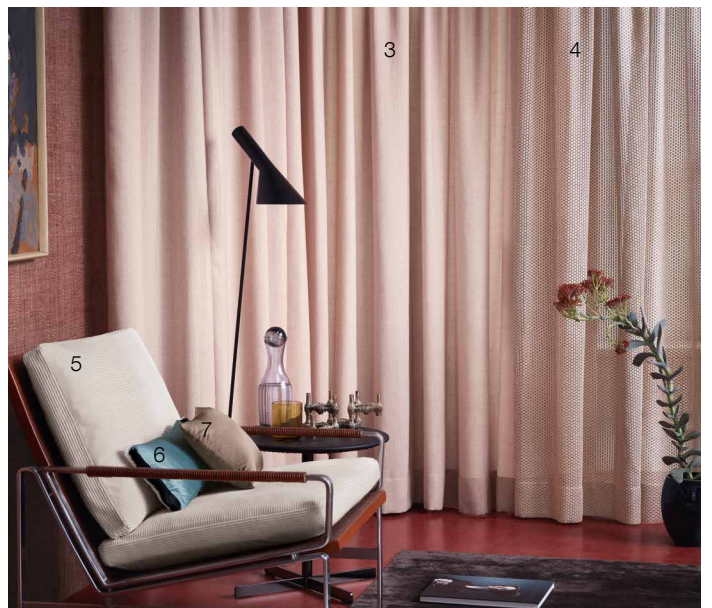
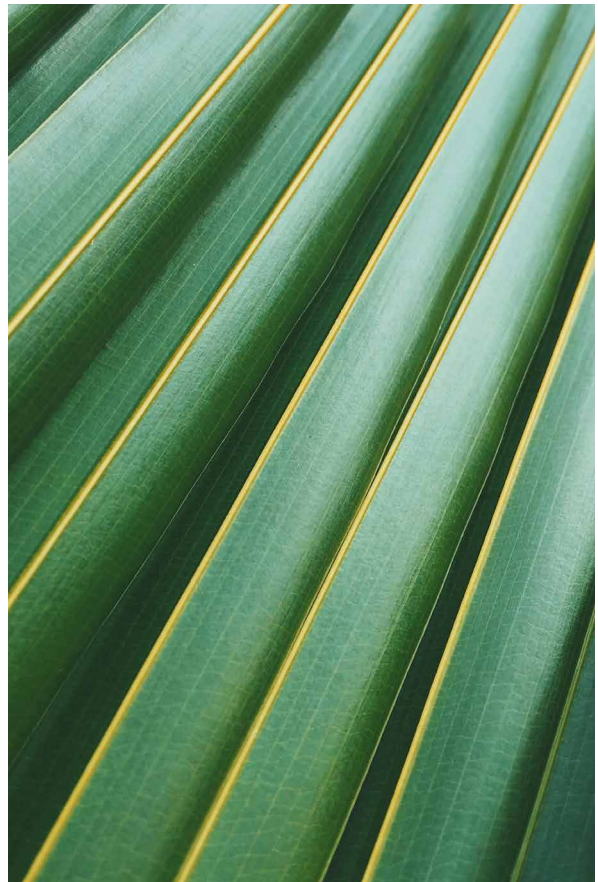


1 Spirit 214 | 2 Spirit 687 | 3 Spirit 881 | 4 Spirit 444 | 5 Spirit 996 | 6 Spirit 714 | 7 Spirit 793 | 8 Spirit 693 | 9 Spirit 556
Left Page: 1 Palmhouse 744 | 2 Kakadu 795 | 3 Kakadu 695 | 4 Kakadu 454 | 5 Kakadu 773 | 6 Spirit 774



1 Serene FR 995 | 2 Patio 295

*A MAGICAL PLACE WITH
NUMEROUS EXOTIC
PLANTS AND SCATTERED
LIGHT LETS YOU ESCAPE
FROM EVERYDAY LIFE.*



1 Kakadu 483 | 2 Kakadu 344
3 Laos FR 343 | 4 Flex FR 494 | 5 Infinity Cord 991 | 6 Colibri 564, Marabou 60030 | 7 Colibri 483



1 Dashy 995

Right Page: 1 Mano 982 | 2 Mirador 884 | 3 Fado 825



1

2

3



1 Fado 815 | 2 Infinity Cotton Feel 667 | 3 Hanbury 686

Right Page: 1 Sketch 991 | 2 Infinity Cord 557 | 3 Infinity Cord 555 | 4 Moonlight FR 114 | 5 Spirit 666 | 6 Spirit 693 | 7 Spirit 597



*AN INTERPLAY BETWEEN STIMULATION AND RELAXATION,
THINKING AND FEELING, AS WELL AS WILDNESS AND
ORDER.*



1 Palmhouse 986 | 2 Fado 825 | 3 Infinity Cord 385 | 4 Mirador 995 | 5 Spirit 998
Right Page: 1 Serene FR 995



BOTANICAL GARDEN



Spirit | 10838
63 Colourways
35% PES, 25% PAN,
10% CO, 5% LI



Infinity Cord | 10839
40 Colourways
Ground: 83% PES, 17% PAN
Pile: 100% PAN



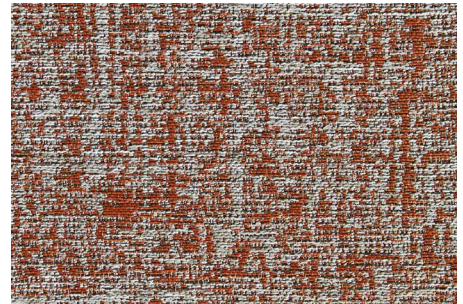
Kakadu | 10840
44 Colourways
100% PES



Bloc | 10844
5 Colourways
70% CO, 30% LI



Willow FR | 10846
16 Colourways
53% PES FR, 45% PES CS,
2% CV



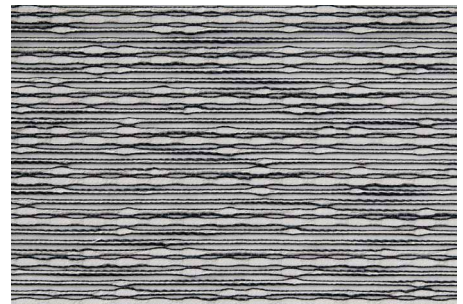
Patio | 10847
15 Colourways
85% PP, 15% PES



Tropical | 10851
3 Colourways
55% CV, 23% LI, 22% PES



Wood Grain | 10852
11 Colourways
Ground: 100% CO
Embroidery: 100% CV

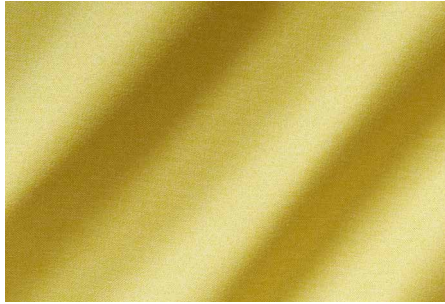


Serene FR | 10853
7 Colourways
100% PES CS



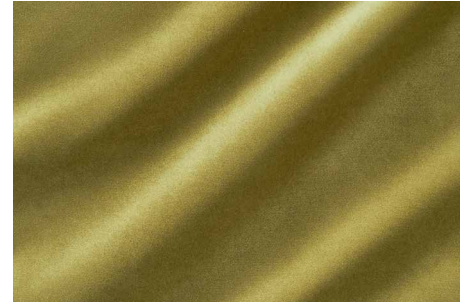
Laos FR | 10841

17 Colourways
100% PES CS



Moonlight FR | 10842

13 Colourways
100% PES FR,
Coat: 100% PES FR



Night Bloom FR | 10843

30 Colourways
100% PES FR



Hanbury | 10848

6 Colourways
82% CV, 18% PES



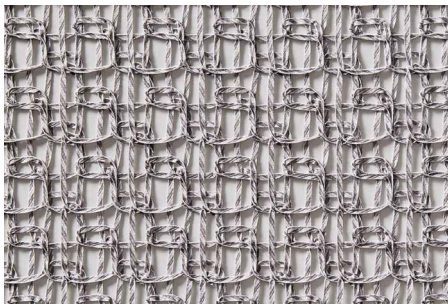
Orangery | 10849

7 Colourways
73% CV, 27% PES



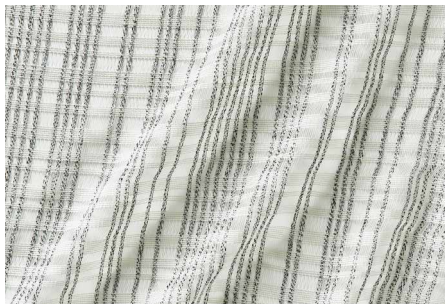
Palmhouse | 10850

6 Colourways
100% CO



Dashy | 10854

4 Colourways
100% PES



Cliff FR | 10855

5 Colourways
100% PES CS



for worldwide contacts please visit
www.zimmer-rohde.com/contacts

