

TRAVERS

NEW YORK



CENRTAL PARK | OUT OF AFRICA

BY ZIMMER + ROHDE



1 Gracie Lampas 637 | 2 Greensward Bouquet 645

TR AVERS

NEW YORK

CENTRAL PARK | OUT OF AFRICA

Die New Yorker Lebensart inspiriert seit jeher das Design von Travers. Die Kollektion CENTRAL PARK spiegelt die Geschichte der „grünen Lunge“ New Yorks wider. CENTRAL PARK verkörpert Anmut und Raffinesse. Die edlen Designs äußern sich in einer farbenfrohen und zugleich stilvollen Palette, die den Zauber des weltberühmten Parks einfängt.

OUT OF AFRICA entführt Sie auf eine Safari der Sinne. Reich an Farbe, Textur und Technik, erfüllt die Kollektion die Sehnsucht nach verspielten und zugleich raffinierten Formen. Die Kollektion bringt Weltoffenheit und subtile Ruhe in Ihr Zuhause. Lehnen Sie sich zurück, und genießen Sie die Reise.

The Travers design aesthetic has long been inspired by a New York state of mind. The CENTRAL PARK collection draws inspiration from the rich history behind this famed park. This collection is full of sophistication and grace and its elegant designs are offered in a colourful yet refined palette, bringing the charm of this renowned park indoors.

Be prepared to go on a Safari for your senses with OUT OF AFRICA. Rich in colour, texture and technique, this Travers collection taps into a desire to create environments that are simultaneously sophisticated and playful. This collection brings a well-travelled, subtle serenity into your home, so sit back and enjoy the ride.

L'esthétique du design Travers s'inspire depuis bien longtemps de l'état d'esprit new-yorkais. Notre collection CENTRAL PARK s'inspire de la riche histoire de ce célèbre parc. CENTRAL PARK est une collection placée sous le signe de la sophistication et de l'élégance. Ses motifs élégants sont proposés dans une palette à la fois colorée et raffinée venant transposer le charme du célèbre parc dans votre intérieur.

Notre collection Travers emmène tous vos sens à bord d'un safari inoubliable. Riche en couleurs, en textures et en techniques, OUT OF AFRICA est l'expression de notre désir de créer des environnements à la fois sophistiqués et fantaisistes. Cette collection apporte une sérénité subtile inspirée des voyages dans votre maison : détendez-vous et profitez.

Da tempo, l'estetica del design Travers trae ispirazione da un mood tipicamente newyorkese. La collezione CENTRAL PARK si ispira alla lunga storia di questo celebre parco. CENTRAL PARK è una collezione ricca di sofisticata eleganza: design ricercati in una palette colorata ma raffinata, che portano il fascino del famoso parco newyorkese nelle vostre case.

Preparate i vostri sensi ad affrontare un safari grazie alla collezione Travers. Ricca di colori, texture e tecniche diverse, la collezione OUT OF AFRICA attinge dal desiderio di dare vita ad ambienti al contempo sofisticati e vivaci. Questa collezione porterà nella vostra casa gli echi idilliaci di viaggi in Paesi lontani: non vi resta che lasciarvi trasportare.



1 Gracie Lampas 637 | 2 Gracie Lampas 843
Right Page: 1 Gracie Lampas 637 | 2 Greensward Bouquet 645



2



1 Olmstead 990 | 2 Central Park Toile 998 | 3 Bosque Moire 777
Right Page: 1 Sabi Sabi 568 | 2 Gramercy 990 | 3 Cape Floral 577

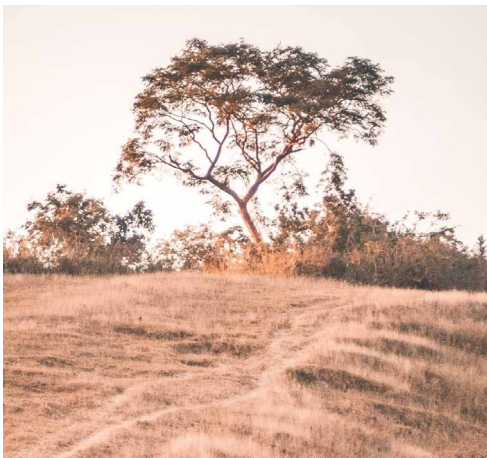


A CONTEMPORARY UPDATE USING OLD WORLD WEAVING TECHNIQUES, THESE PROCESSES HAVE BEEN PASSED DOWN BY SKILLED ARTISANS FOR MANY GENERATIONS.



1 Cape Floral 844 | 2 Victoria 997 | 3 Sabi Sabi 998 | 4 Samburu 898 | 5 Zamma 999 | 6 Safara Embroidery 915 | 7 Zamma 892

A NEUTRAL ARRAY OF GOLDEN HUES AND COOL SILVER GREY CREATE AN ENVIRONMENT WHERE THE SOFT BREEZE AND SMELL OF WARM SAND CAN FILL THE MIND.



1 Cape Floral 844 | 2 Victoria 997 | 3 Victoria 997 | 4 Samburu 898 | 5 Zamma 892



1 Beresford 982 | 2 Greenswarl Bouquet 843 | 3 Maasai Mara 785 | 4 Zamma 991 | 5 Samburu 883 | 6 Gracie Lampas 843
Right Page: 1 Sabi Sabi 992 | 2 Safara Embroidery 983 | 3 Maasai Mara 882 | 4 Kudu Chevron 997 | 5 Singita Parade 919



A SAFARI FOR YOUR SENSES – RICH IN COLOUR,
TEXTURE AND TECHNIQUE.



1

2

3



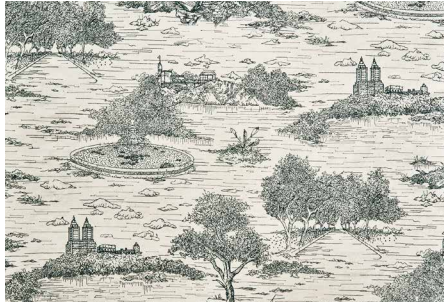
1 Barabara 895 | 2 Barabara 992 | 3 Barabara 695 | 4 Barabara 598
Left Page: 1 Greensward Bouquet 546 | 2 Central Park Toile 892 | 3 Bosque Moire 442

CENTRAL PARK



Greensward Bouquet | 44164

3 Colourways
100% LI



Central Park Toile | 44165

4 Colourways
60% CO, 40% LI
Embroidery: 100% PES



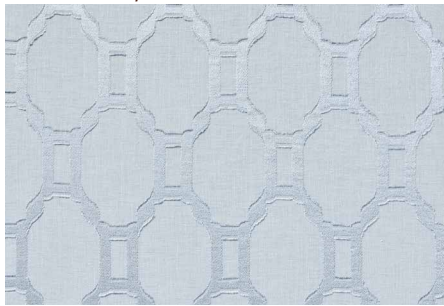
Gracie Lampas | 44166

2 Colourways
72% CV, 28% PA



Beresford | 44167

4 Colourways
51% LI, 21% PES, 17% CO,
9% CV, 2% CLF



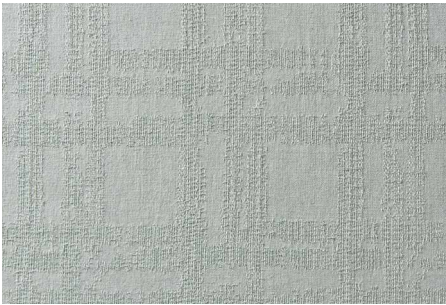
Olmstead | 44168

5 Colourways
75% PES, 15% LI,
8% CV, 2% CLY



Bosque Moire | 44169

6 Colourways
100% CO



Gramercy | 44170

6 Colourways
70% CO, 30% LI

OUT OF AFRICA



Cape Floral | 44154

4 Colourways
90% CO, 10% LI



Singita Parade | 44155

4 Colourways
100% COEmbroidery: 100% PES



Kudu Chevron | 44156

3 Colourways
64% LI, 36% CO



Safara Embroidery | 44157

2 Colourways
55% LI, 45% CO
Embroidery: 100% PES



Sabi Sabi | 44158

3 Colourways
60% LI, 40% CO
Embroidery: 80% PES, 20% CV



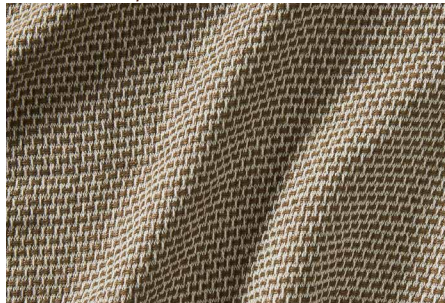
Victoria | 44159

4 Colourways
46% LI, 43% PES,
8% CV, 3% CLF



Maasai Mara | 44160

3 Colourways
56% LI, 44% CO
Embroidery: 100% WO



Barabara | 44161

5 Colourways
70% LI, 20% PES, 10% CV



Zamma | 44162

7 Colourways
40% CV, 40% CO, 20% PES



Samburu | 44163

3 Colourways
66% CV, 19% PA,
9% CO, 6% PES



for worldwide contacts please visit
www.zimmer-rohde.com/contacts