

RUBELLI

Contract Portfolio



**Behind any project there  
is an inspiration, a choice, a study,  
a selection, a mood.  
And a final result.**

# A textile story dating back to more than a century

The Rubelli company, now in its fifth generation, represents one of the most important brands on the international design scene, producing a highly prestigious and innovative product.



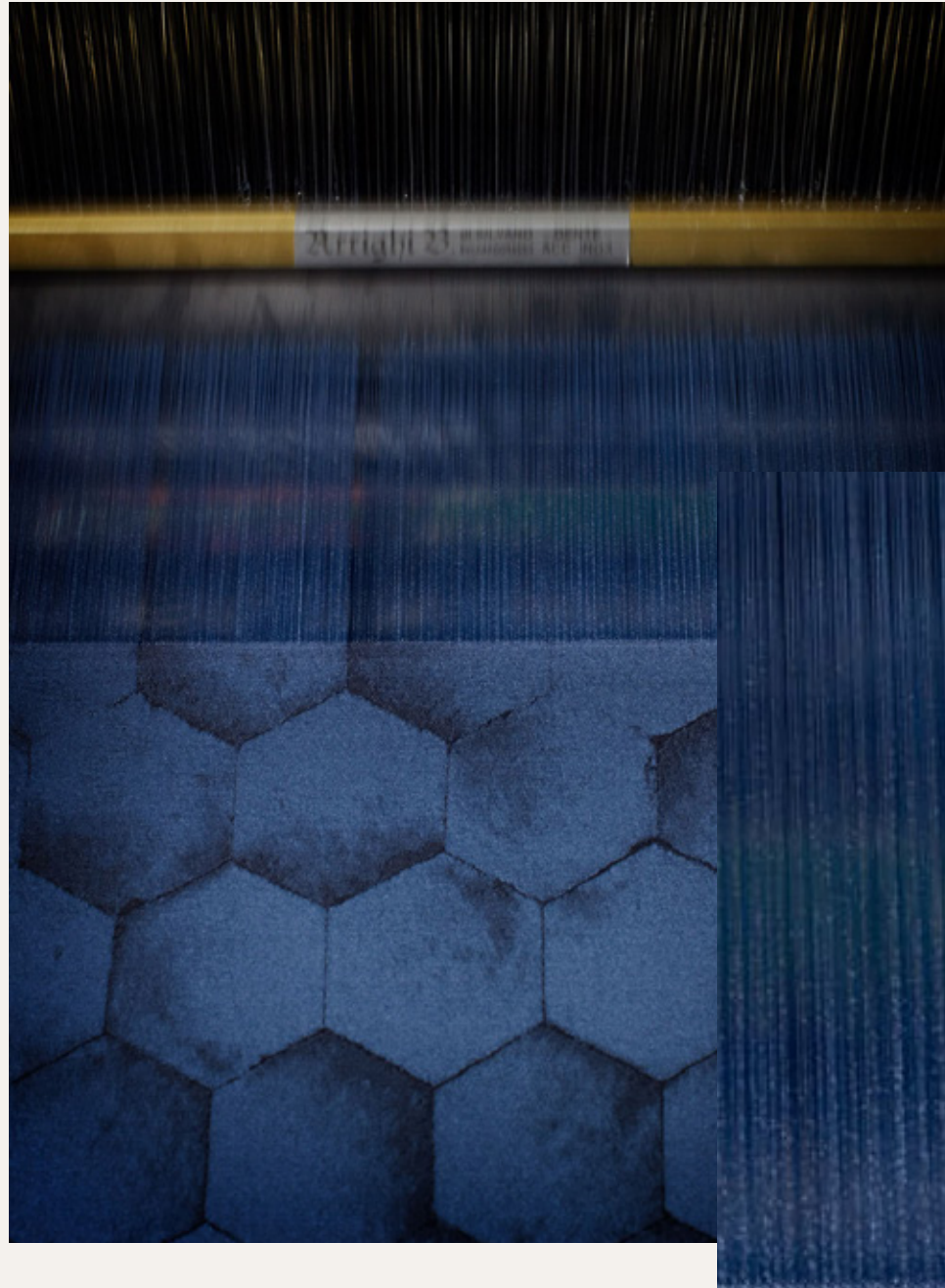
THE RUBELLI FAMILY

ON THE RIGHT: VELVET  
PUNTEGGIATO, DESIGN  
GIO PONTI, 1934



# Made in Italy in the Rubelli mill

Rubelli controls every step  
of its production thanks to its  
team of designers and experts  
and to its own weaving mill  
in Cucciago near Como.



Our design studio  
is constantly looking for  
“the perfect texture”

A unique approach

- Designs
- Yarns
- Testing



## A dedicated product



- Textile collections and wallcoverings: all strictly flame-retardant
- Fabrics produced to the client's design
- Flame-retardant versions of residential fabrics
- Technical reinterpretations of historical fabric structures

## From moodboards to projects

The Rubelli moodboards guide the designer's selection of fabrics and wallcoverings.

The moodboard is an easily accessible tool and very useful in the initial project stage.



# Sustainability

## Rubelli production is 80 percent zero miles

By involving specialist partners and suppliers located in the area of its production unit, Rubelli reduces the wastefulness of economic and environmental resources in its whole production process.

## Green Certifications

Thanks to an increasing use of Oeko-Tex yarns (i.e. yarns not treated with harmful or carcinogenic products), Rubelli offers fabrics certified Oeko-Tex standard 100 as well as fabrics certified Greenguard Gold, which states that they do not release damaging substances into the environment.





Beauty and high performances

At Rubelli we give priority  
to the aesthetic, technical  
and functional aspects  
of the fabrics

#performance

# Resistance to light and washability to high temperature



Colour fastness  
to light: 7/8

Colour fastness  
to chlorinated water: 4/5

Colour fastness  
to seawater: 4/5

Washability up to 50° (Celsius)

#performance

# Flame-retardant fabrics certified for the hospitality sector



## FLAME-RETARDANT CERTIFICATIONS

Italia Classe 1

France M1

Germany B1

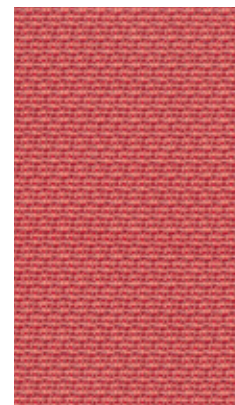
UK BS

U.S.A. CAL 117

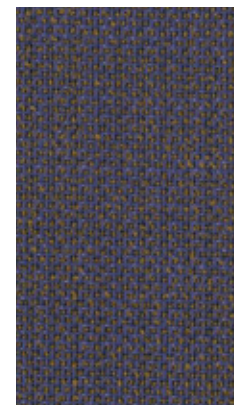
IMO

#performance

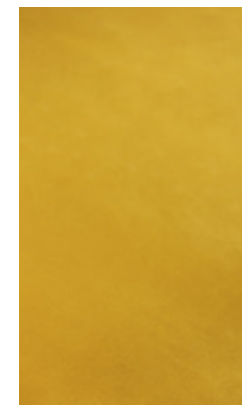
# Resistance to abrasion



**CROCHET**  
60.000 martindale



**KARL**  
70.000 martindale



**VELVETFORTY**  
120.000 martindale

# Textures

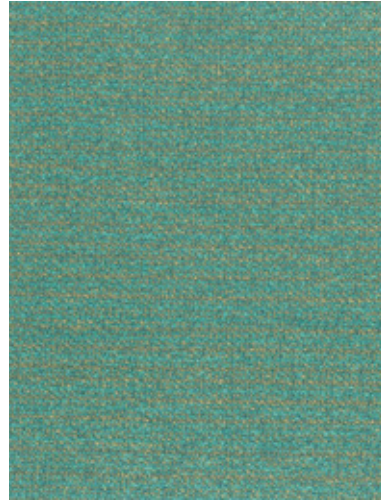
Textures and micro-textures. Research and technical know-how have made these fabrics more and more similar to natural fibre textiles, having reached almost the same levels of comfort and pleasure to the touch. Seemingly simple, these textures seduce with their skillful woven motifs and enchanting relief effects.



# Textures



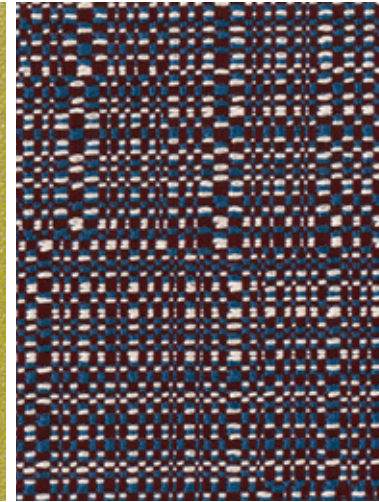
**BENETO.** A shiny "stitched" surface



**COCO.** Highly textural micro-jacquard



**KARL.** With an artisanal look



**PERÙ.** Geometrical jacquard in relief



**PLUTONE.** A flamed yarn with 3D effect



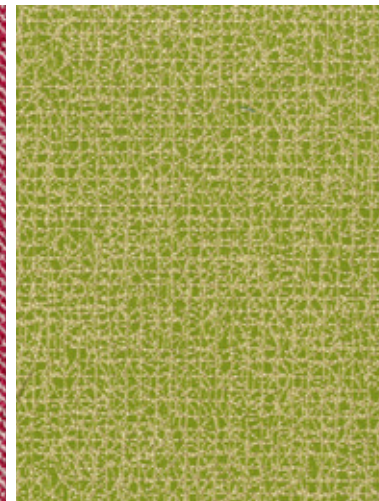
**TADAO.** Faux uni with shantung effect



**ZIRMA.** A young and smart tweed



**TWILL.** The typical diamond pattern



**WABI.** Shiny and raised micro pattern



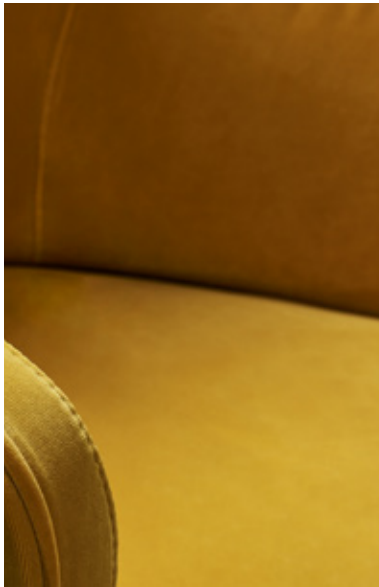
**FABTHIRTY.** A contemporary tweed

# Velvet

Long pile, short pile, medium pile. Jacquard velvet or printed velvet. Either similar to cotton or to silk, thus reminding the hand-woven velvet. More or less shiny. Piece dyed or yarn dyed, able to create unexpected colour nuances.



# Velvet



**VELVETFORTY.** Informal and contemporary



**CORTEZ.** Woolly with a striped effect



**UNDERGROUND.** Urban and casual



**MARTORA.** Silky and with an artisanal look



**TATLIN.** Decorative and very contemporary



# Decorative fabrics

A decoration made of small or very small motifs, of abstract and evocative designs, and of floral patterns, sometimes stylised.

Some of them may be ascribed to models belonging to the tradition, but with fewer sharp lines and more unfocused contour lines.

All these fabrics share a silky aspect and at the same time a great ease of use.

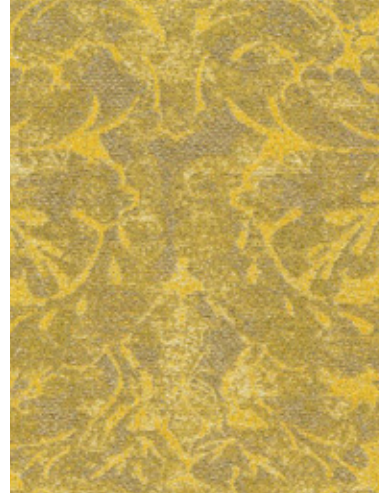
# Decorative fabrics



**MARGOT.** An elegant double-faced jacquard



**SIR FRANCIS.** Decorative crinkled damask



**BARRY LYNDON.** A jacquard with raised metallic effects



**ARGIA.** Lampas with a great depth



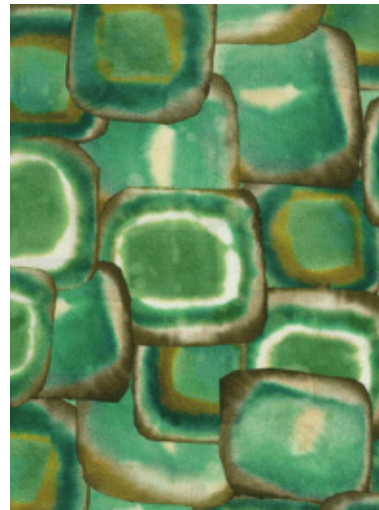
**FIAMMETTA.** Interpretation of lace



**ADELMA.** Backlight motif



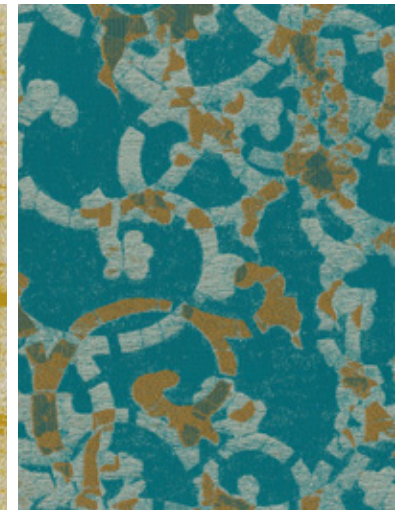
**RUSKIN.** Inspired by a velvet from the Rubelli archive



**ROCKSTAR.** A vaguely geometric print



**GYPSOS.** Solid colours and light shading



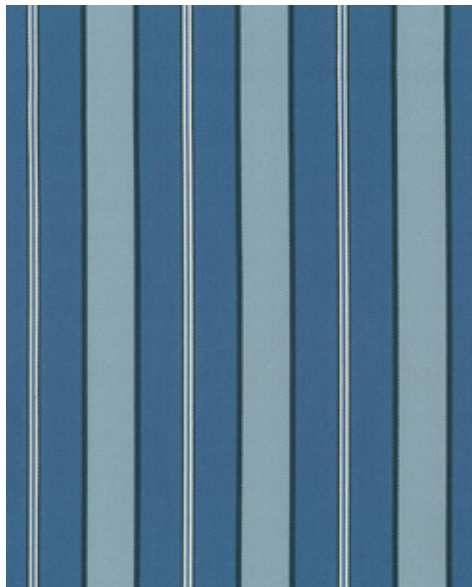
**KATAGAMI.** An allover design inspired by katagami

# Stripes

For decoration or for upholstery, with large width, traditional or innovative, barré railroaded to be used also horizontally for contemporary project. With a more or less rhythmical sequence, multicolor, light, but also textural and very resistant.

Flame-retardant, 100% made in Italy.

# Stripes



**PICCADILLY.** Dynamic in its alternation of colours



**TENSTRIPE.** A youthful fashionable stripe



**TRAFALGAR.** Sombre and imposing



**TATAMI.** Metallic and chiné effects

# Geometric patterns

New geometries which one can get pleasantly lost in.

Contemporary jacquard, soft chenille, printed velvet: Rubelli presents the geometric theme in various types and different motifs.

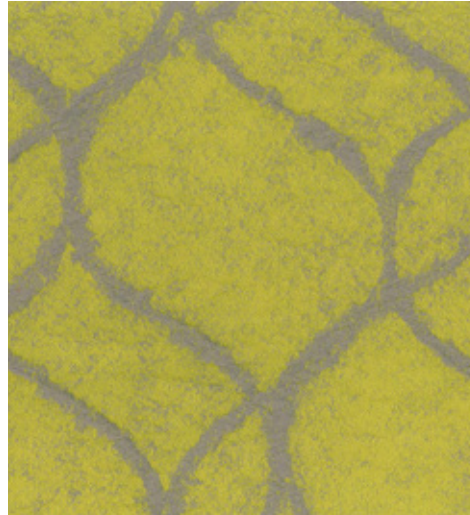
For upholstery, but also for drapery and decoration.

All the items are made with Oeko-Tex yarns and certified Greenguard Gold, because sustainability is a value.

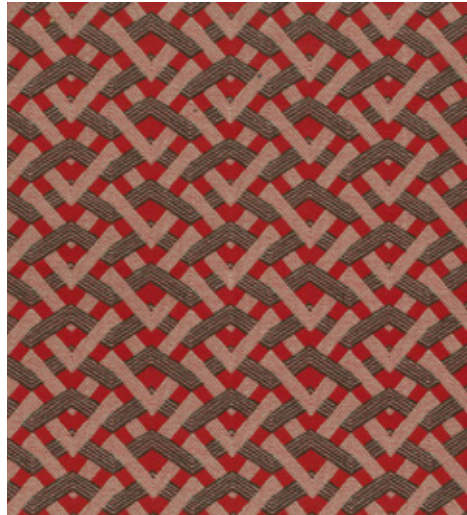
# Geometric patterns



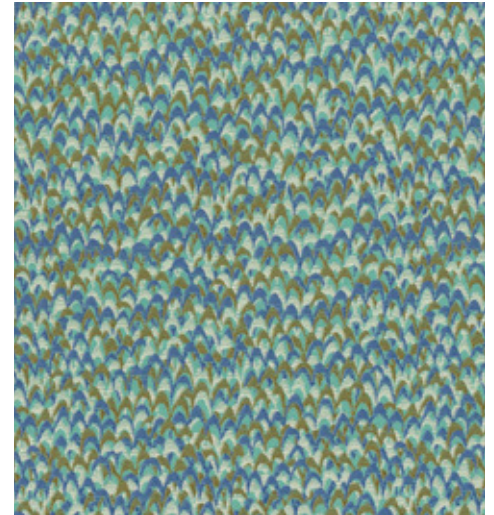
**ASPERN.** Inspired by a Rubelli fabric from the Fifties



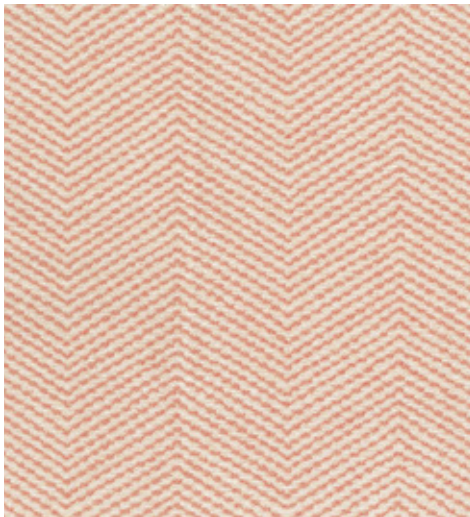
**CRISTOBAL.** A classic and timeless decoration damask



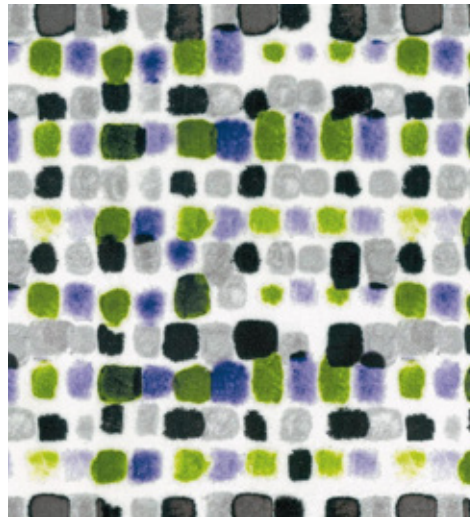
**NIRVANA.** Zigzag lines for a futuristic jacquard



**BEAT.** A decoration inspired by multicoloured Venetian beads.



**SOUND.** The herringbone pattern for an elegant jacquard



**MAQUILLAGE.** A lively dappled pattern for a printed velvet



**LABIRINTO.** A dynamic texture for a soft chenille

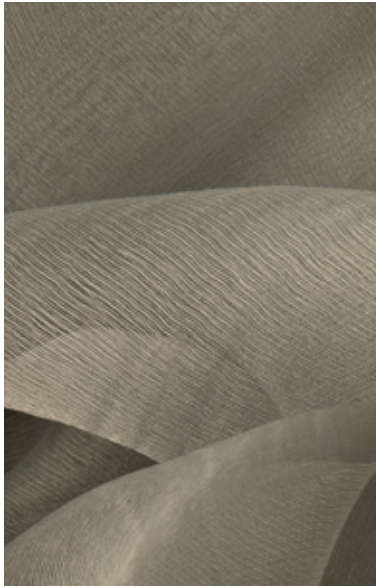


**SWINGING LONDON.** Lampas inspired by an embroidered artwork

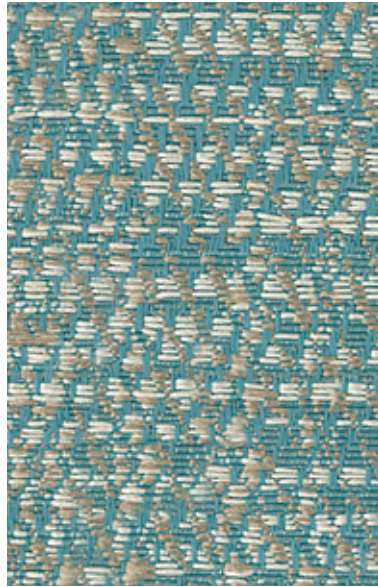
# Sheers

Sheers decorate, protect, separate. Either light and impalpable or blackout and textural. With extra width. Railroaded to be used also horizontally. Shiny, mat, printed, striped, embroidered or with filigree designs. Simple or decorative. All sheers are available in well-balanced/sober neutral tones, and also in richer and defined colours.

# Sheers



**ALBA.** Super-fine and with slight movement



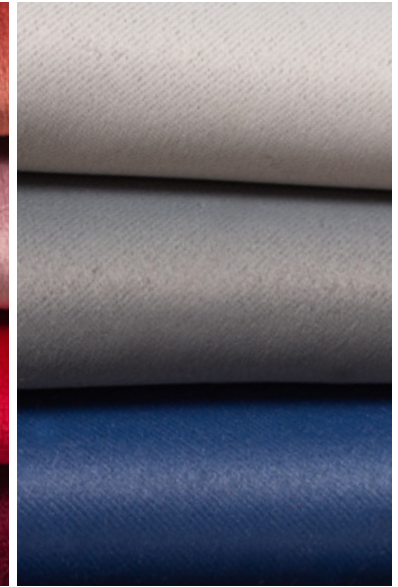
**DUKE.** A patterned texture ideal for drapery



**BEBOP.** Soft and reminiscent of a wool khadi



**POPPY.** A velvety look for a 100% blackout curtain



**VERBENA.** A natural aspect for a textile blackout

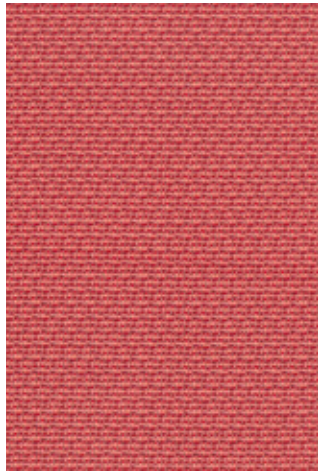


# In/Outdoor

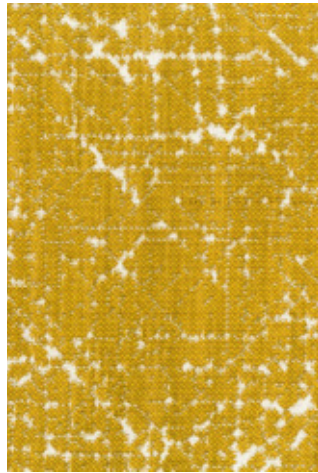
Innovation and experimentation. Flame-retardant fabrics for indoor use, and fabrics with high resistance both to light and to chlorinated water for outdoor use. "Technical" fabrics increase their value thanks to the certifications Greenguard Gold and Oeko-Tex. For a sustainable textile production.



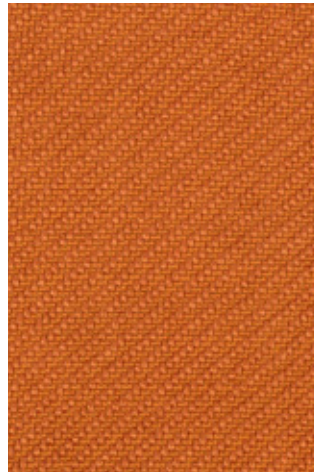
# In/Outdoor



**CROCHET.** A weave similar to crochet



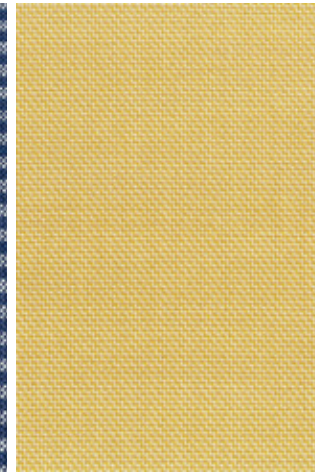
**DIECIELODE.** An ethnic taste jacquard



**TWILLTWENTY.** A twill, vibrant under the light



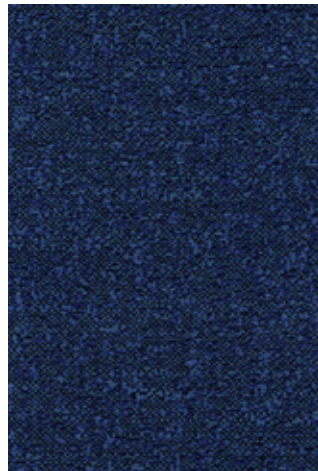
**TENSTRIPE.** A youthful fashionable stripe



**INTRECCIO.** A chromatic vibration of the yarns



**OUTMAP.** Made with solution-dyed yarns



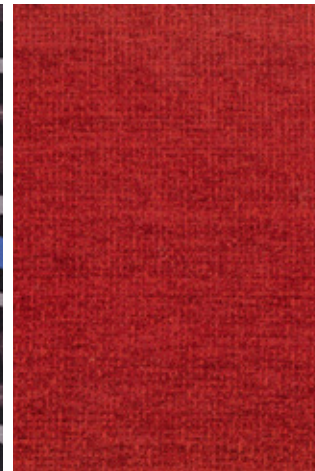
**FABTHIRTY.** A contemporary tweed



**TERRY.** A 3D microstructure



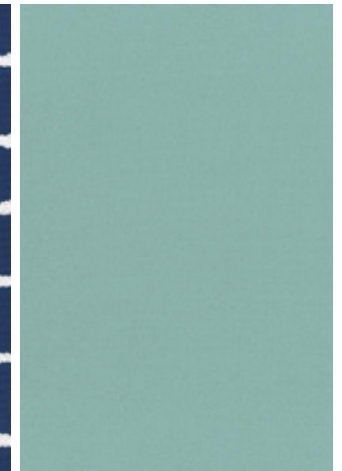
**OUTCROSS.** Ink-jet technique print



**VELVETY.** Soft chenille with a worn-out look



**OUTWALL.** The reproduction of a brick wall



**FIFTYSHADES.** An iridescent jacquard in 50 colours

Rubelli has been in the contract market since 1987. Its fabrics, that comply the main international safety requirements, are intended for the hospitality sector, from the large chains to boutique hotel, ship building to retail and public spaces such as restaurants, airports, business centres and, increasingly often, the residential sector.

HOTEL

RESTAURANT

RETAIL

AIRPORT

CRUISE SHIPS

THEATRES

MUSEUM AND PALACES

# Hotels

## International chains

Aman Hotel  
The Address Boulevard  
Adina Hotels  
Armani Hotels  
Baglioni Hotels  
Belmond  
Cheval Blanc  
Crowne Plaza  
Fairmont  
Four Seasons  
Frontenac  
Hilton  
Hyatt  
Intercontinental  
Kempinski  
Mandarin Oriental  
Marriott  
Melià  
Nomad Hotels  
Oetcker Collection  
Okura Hotels  
One & Only  
Ritz Carlton  
Rocco Forte  
S. Regis  
Shangri la  
Sheraton  
Sofitel  
Soho House  
W hotel  
Waldorf Astoria  
Westin Hotels  
Wynn Hotels

## Boutique Hotels/ Independent hotels

**Atlantis Hotel**  
Dubai

**Baur au lac**  
Zurich

**Claridge's**  
London

**Grand Hotel dei Dogi**  
Venezia

**Grand Hotel Excelsior Vittoria**  
Sorrento

**Grand Hotel Tremezzo**  
Como

**Grand Village Recreation Center**  
Al Khobar

**Gritti Palace - Luxury Collection**  
Venezia

**Hassler Hotel**  
Roma

**Hotel Alabriga**  
Costa Brava

**Hotel Armancette**  
Saint-Gervais Les Bains

**Hotel Burji**  
Dubai

**Hotel Danieli- Luxury Collection**  
Venezia

**Hotel de la Ville**  
Roma

**Hotel Excelsior**  
Venezia

**Hotel Excelsior Gallia**  
Milano

**Hotel Excess**  
Venezia

**Hotel Experimental**  
Venezia

**Hotel Faloria**  
Cortina D'Ampezzo

**Hotel La Reserve**  
Paris

**Hotel Monaco e Grand Canal**  
Venezia

**Hotel Neckarville Ameron**  
Frankfurt

**Hotel Principe di Savoia**  
Milano

**Hotel Savoy**  
Moscow

**Hotel Villa Lara**  
Bayeux

**Masseria Pettoleccchia**  
Fasano (Brindisi)

**Palace Hotel**  
New York

**Pantheon Palace**  
Roma

**Portofino Hotel**  
Dubai

**The Lawry Hotel**  
London

**Villa d'Este**  
Cernobbio

**Vivienda Hotel&Villas**  
Jeddah

PROJECT / HOTEL

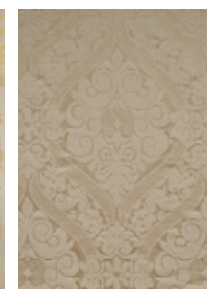
# Gritti Palace

VENEZIA



# Gritti Palace

VENEZIA



LA TRAVIATA  
AVORIO

SIR FRANCIS  
SALICE

EMMA  
GISATINLE

PROJECT / HOTEL

# Hotel dei Dogi

VENEZIA



BEAT  
PERVINCA



PLUTONE  
SABBIA



BARBARIGO  
OPALE  
IN TREVIRA

RUBELLI



PROJECT / HOTEL

# New York Palace

NEW YORK



MONTEPULCIANO  
CUSTOM



SATIN CUSTOM  
ORO



SATIN CUSTOM  
OTTONE



# Hotel TwentySeven

AMSTERDAM



MADAMA  
BUTTERFLY  
ACQUA



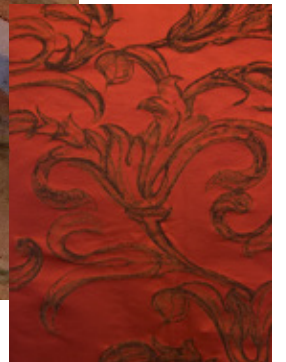
MADAMA  
BUTTERFLY  
ARANCIO

# Four Season

MILANO

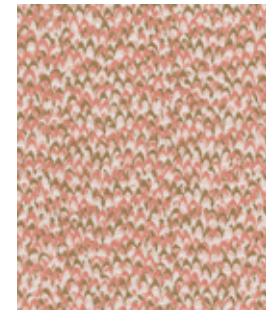


GRIANTE  
MELOGRANO



# Palazzo Experimental

VENEZIA



BEAT  
PESCO



NIRVANA  
ACQUA

# Hotel Aman

VENEZIA



PROJECT / HOTEL

# Hotel Aman

VENEZIA



SAN MARCO  
MADREPERLA



SAN MARCO WALL  
ARGENTO

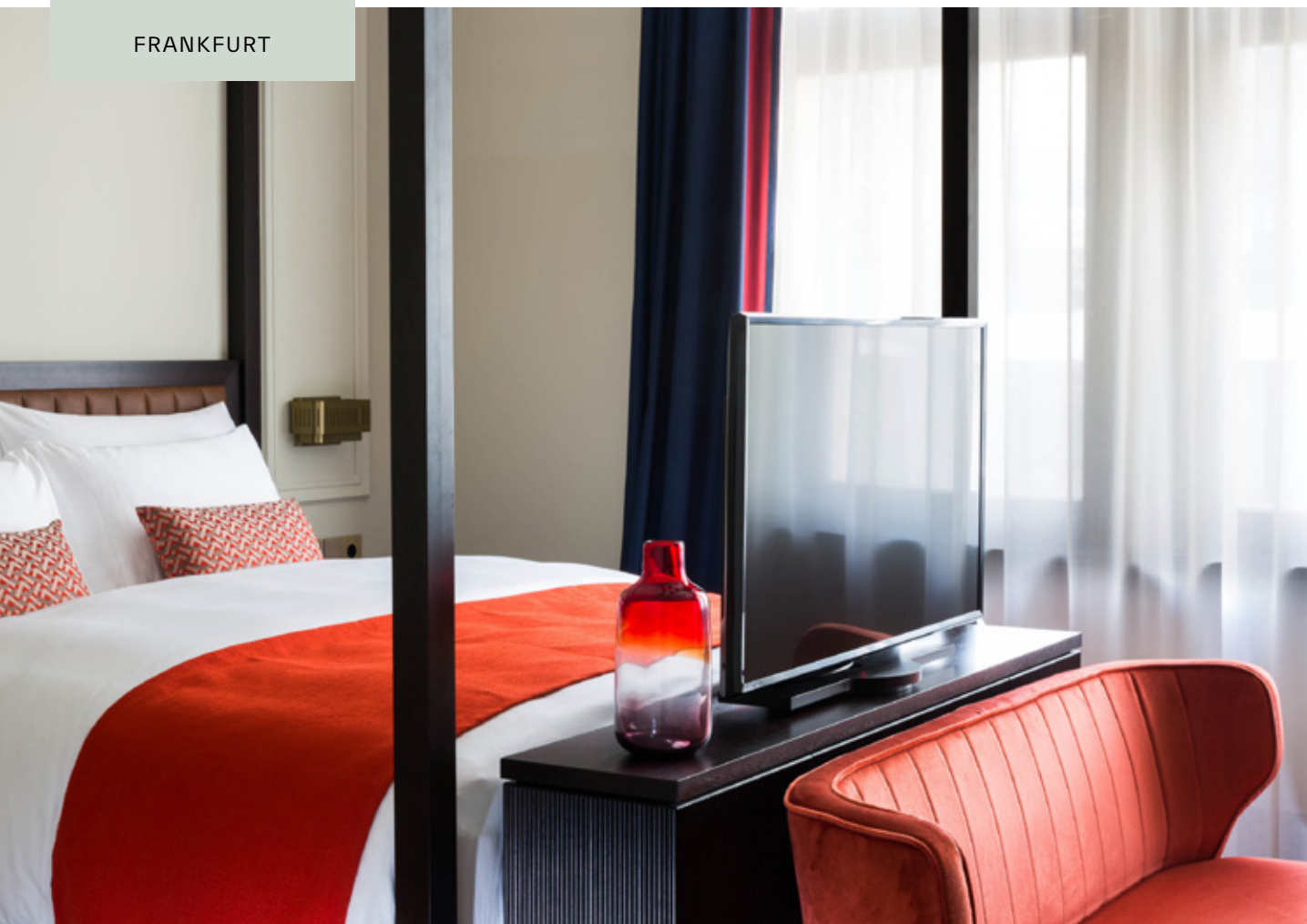


RUBELLI

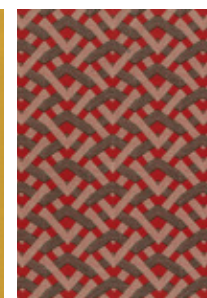
PROJECT / HOTEL

# Hotel Neckarvillen Ameron

FRANKFURT



VELVETFORTY  
GIALLO



NIRVANA  
ROSSO



VELVETFORTY  
ARANCIO

PROJECT / HOTEL

# Hotel Dylan

AMSTERDAM



RUBELLI

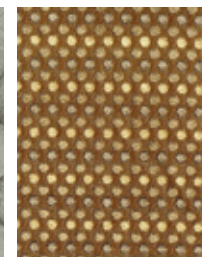
PROJECT / HOTEL

# Hotel Margutta

ROMA



SING  
ARGENTO



PUNTEGGIATO  
SABBIA



AGLAURA  
TEK





PROJECT / HOTEL

# Palacio Tangará

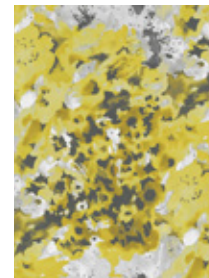
SÃO PAULO



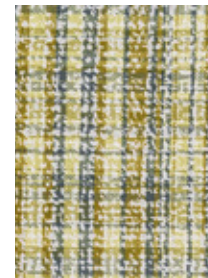
RUBELLI

# Hotel Burgundy

PARIS



MONET  
GIALLO NAPOLI



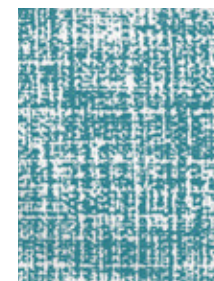
FRIEDY  
GIALLO NAPOLI



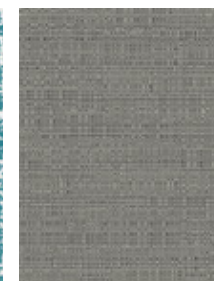
MARTORA  
ACQUA

# Castello del Nero

FIRENZE



OUTMAP  
ARTIC



PLUTONE  
ANTRACITE

# Hotel Villa Lara

BAYEUX



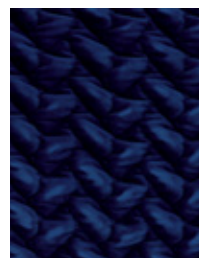
BEAT  
ACQUA



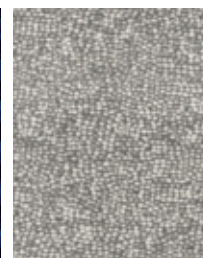
FUNNY GIRL  
ACQUA

# Hotel l'Armancette

SAINT-GERVAIS LES BAINS



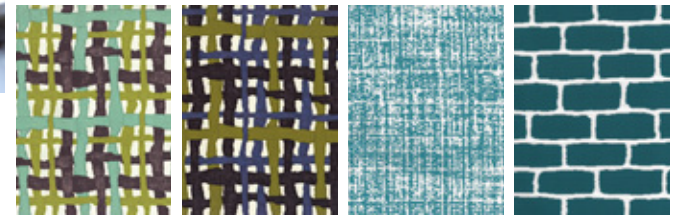
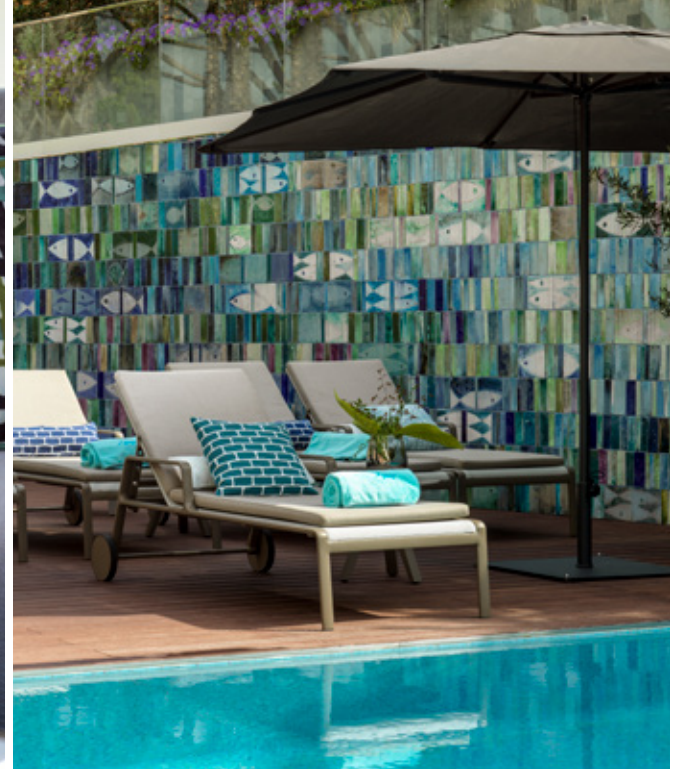
VELOURS  
TRESSE



KUSA  
ARGENTO

# Alabriga Hotel

COSTA BRAVA



OUTCROSS  
LAGUNA

OUTCROSS  
OLIVE

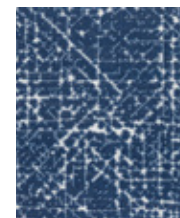
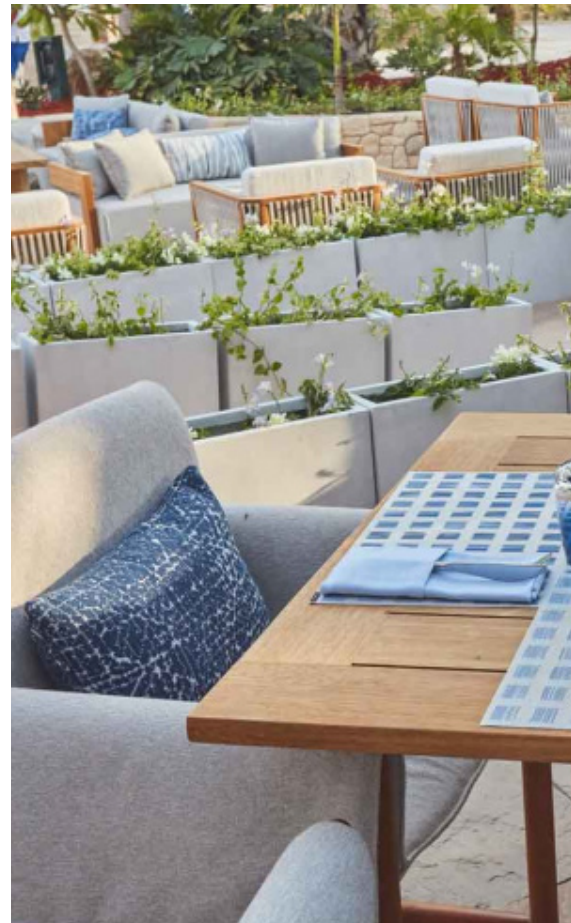
OUTMAP  
ARTIC

OUTWALL  
ARTIC

PROJECT / HOTEL

# Atlantis Hotel - White Beach

DUBAI



DIECELODE  
BLU

# Restaurants

## References

**Ristorante Oro, Hotel Cipriani**

Venezia

**Ristorante Club del Doge, Gritti Palace**

Venezia

**Baita Piè Tofana**

Cortina d'Ampezzo

**Ristorante Pacifico**

Vicenza

**Meraner Weinhouse**

Merano

**Tatabui Bistrot - Cocktail Bar**

Torino

**Project Peninsula lobby**

Paris

**Le Vog en Seine**

Paris

**Emily**

Paris

**La Casserole**

Strasbourg

**Alain Ducasse**

London

**It Restaurant**

London

**Masala Zone Restaurant**

London

**Aqua Kyoto Japanese Rest**

London

**Ristorante Amazonico**

London

**Gymkhona rest.**

London

**Ristorante Wien M.Thun**

Wien

**Cafè Jaime Bareistain**

Barcelona

**Pai Thai R Jumeirah**

Dubai

**Mandarin Oriental Restaurant**

Doha

**Tweted Olive Bistro tower**

Dowa

**Billionaire**

Riyadh

**Pattis France Rest**

Riyadh

**Four Season Restaurant**

New York

**Spago**

Las Vegas

RUBELLI

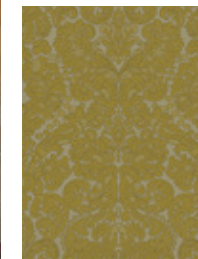


# Ristorante Club del Doge, Gritti Palace

VENEZIA



BACCARAT  
MULTICOLORE



TEBALDO  
MIELE

# Restaurant La Casserole

STRASBOURG



LADY  
HAMILTON  
ACQUA



LADY  
HAMILTON  
LIMONE



LADY  
HAMILTON  
CORALLO

# Ristorante Hotel Tremezzo

COMO



# Retail

## References

Cartier

Cartier Eyewear

Damiani

Ermenegildo Zegna

Fondaco dei Tedeschi

Fope

Jimmy Choo

Liu Jo

René Caovilla

Santoni

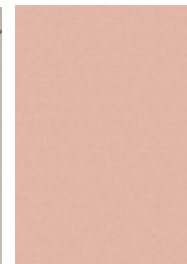
Sergio Rossi

Tiffany

RUBELLI

# Liu Jo boutique

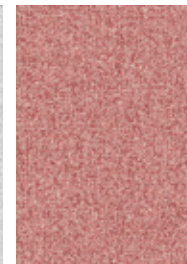
MILANO



COCO  
PESCO



FABTHIRTY  
ARGENTO



FABTHIRTY  
ROSA

**Pink  
on pink**

# Jimmy Choo boutique

FIRENZE



MING, LACCA

# Santoni shoes

MILANO



GOLDFINGER  
TIFFANY



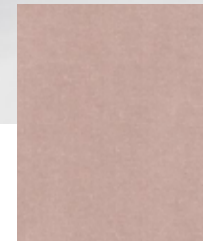
GOLDFINGER  
ROSA ANTICO



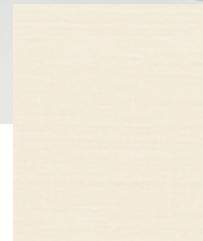
PROJECT / RETAIL

# Sergio Rossi boutique

PARIS / LONDON



UNDERGROUND  
ROSA



VELVET  
CUSTOM  
PANNA



ALMORÒ  
VERDE



PROJECT / RETAIL

# Fope boutique

LONDON / VENEZIA



AIDA  
BIANCO



VELVETFORTY  
LAGUNA

PROJECT / RETAIL

# Tiffany boutique

NEW YORK



PROJECT / RETAIL

# Tiffany boutique

NEW YORK



Custom  
fabric



# Cruise ships

## References

Carnival Cruise Line

Compagnie Du Ponant

Costa Crociere

Cunard

Crystal

Disney

Holland America Line

Norwegian Cruise Line

Oceania Cruises

P&O

Princess Cruises

Regent

Royal Caribbean Cruise Line

Seabourn

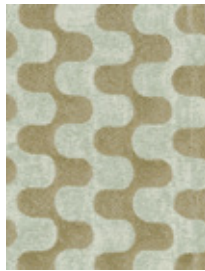
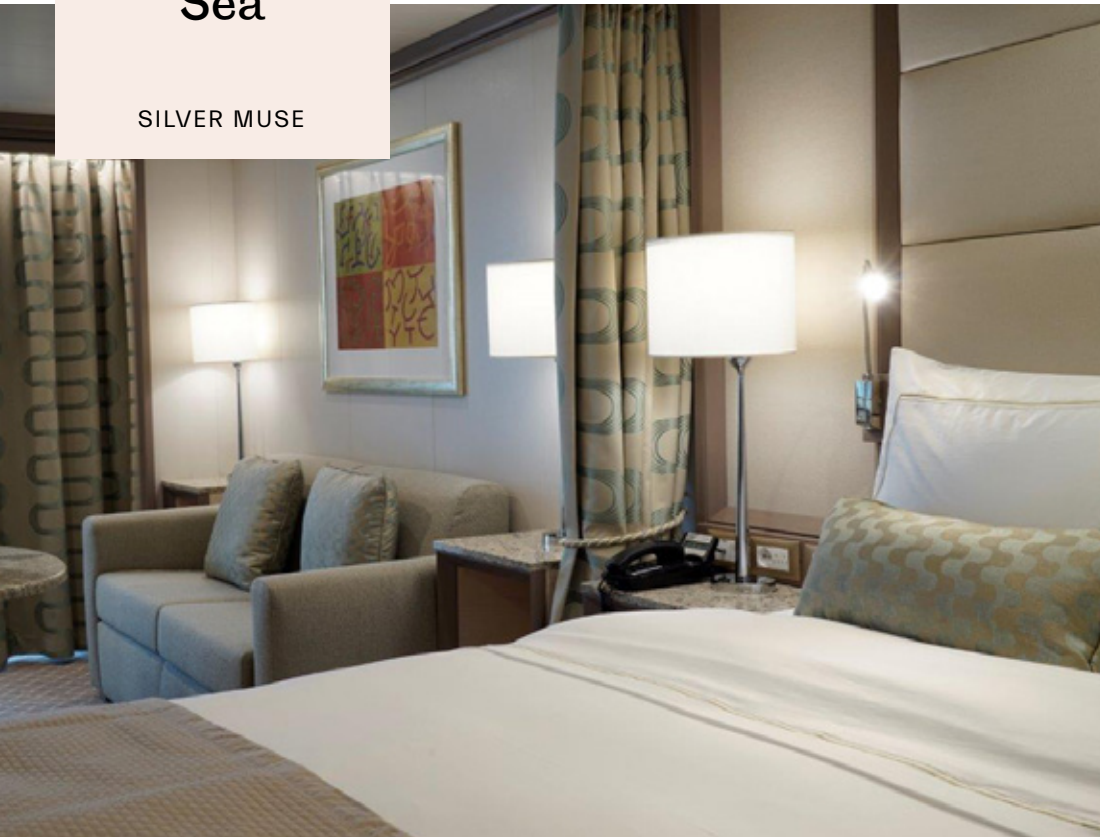
Silversea

Viking

RUBELLI

# Silver Sea

SILVER MUSE



OP ART  
GIADA



SUMI  
RAME

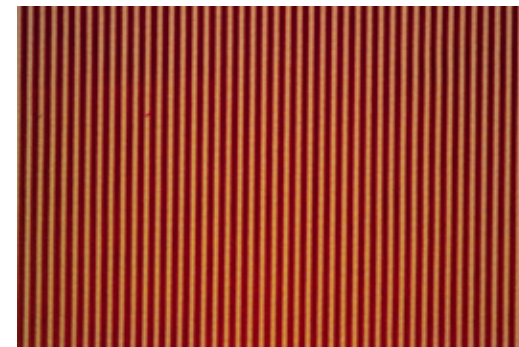


VAGUE  
LAGUNA



# Costa Crociere

COSTA SMERALDA



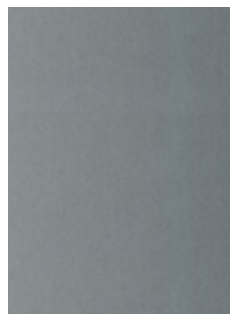
GERSHWIN  
CILIEGIA



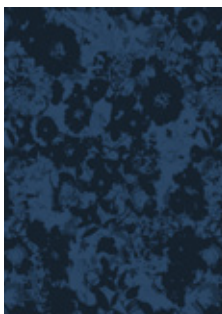
SING  
ARGENTO

# Regent

EXPLORER



CUSTOM VELVET  
GRIGIO



CHIAROSCURO  
COLORE CUSTOM



# Museums and Royal Palaces

## References

**Castello di Miramare**  
Trieste

**Castello di Racconigi**  
Torino

**Castello di Gressoney**  
Valle d'Aosta

**Palazzo Reale**  
Milano

**Palazzo Reale**  
Venezia

**Palazzo Reale**  
Genova

**Palazzo del Quirinale**  
Roma

**Palazzo Ducale**  
Venezia

**Palazzo Franchetti**  
Venezia

**Palazzo Vendramin Calergi**  
Venezia

**Palazzo Mocenigo**  
Venezia

**Palazzo Venezia Polo Museale**  
Roma

**Palazzo Maffei**  
Verona

**Albertina Museum**  
Wien

**Museo Teatrale alla Scala**  
Milano

**Museo Galleria Borghese**  
Roma

**Gallerie dell'Accademia**  
Venezia

**Fondazione Querini Stampalia**  
Venezia

**Villa Reale Monza**  
Monza

**Villa Necchi Campiglio**  
Milano

**Serra Giardinetti Reali San Marco**  
Venezia



# Palazzo Reale

MILANO



# Albertina Museum

WIEN



ALBERTINA  
BLU



ALBERTINA  
ROSSO



ALBERTINA  
GIALLO

# Palazzo Reale

VENEZIA



# Theatres

## References

**Teatro La Fenice**

Venezia

**Teatro Alla Scala**

Milano

**Teatro dell'Arte della Triennale**

Milano

**Teatro Gerolamo**

Milano

**Teatro San Carlo**

Napoli

**Teatro Petruzzelli**

Bari

**Teatro Amintore Galli**

Rimini

**Teatro Gaetano Donizetti**

Bergamo

**Nationaltheatret**

Oslo

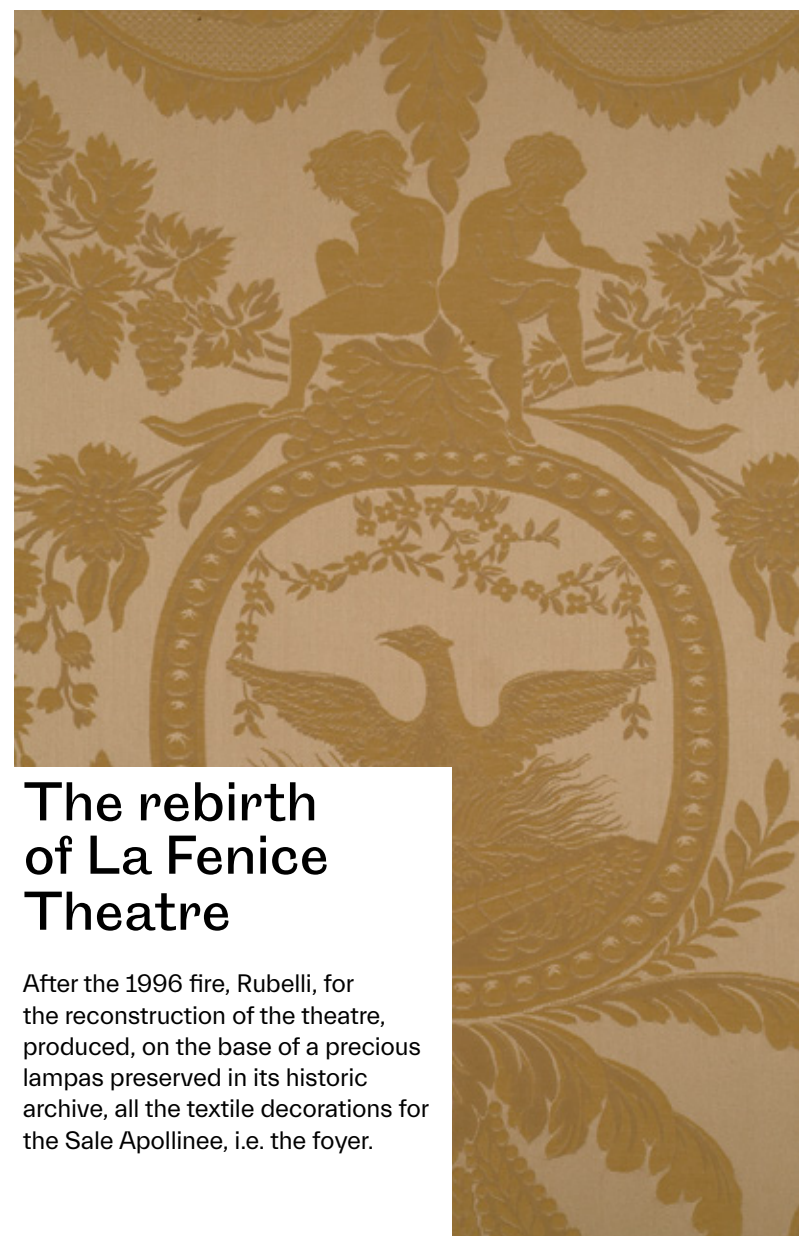
**Teatro Bolshoi**

Moscow

RUBELLI

# Teatro La Fenice

VENEZIA



## The rebirth of La Fenice Theatre

After the 1996 fire, Rubelli, for the reconstruction of the theatre, produced, on the base of a precious lampas preserved in its historic archive, all the textile decorations for the Sale Apollinee, i.e. the foyer.

# Teatro Alla Scala

MILANO



ALFIERI FABRIC



## The reproduction of a residential collection damask

For the restoration of La Scala Theatre, Rubelli supplied thousands of metres of fabrics, including the empire style damask for the boxes of the theatre. Thanks to special technical yarns the silk damask was made flame retardant.

# Teatro dell'Arte Triennale

MILANO



## A bespoke blue velvet

For a theatre conceived as a meeting place between experimental art expression and project arts, as architecture and design, Rubelli produced a vibrant electric blue velvet, thus showing itself able to speak various design languages, not only the classic or traditional ones.

# Teatro Bolshoi

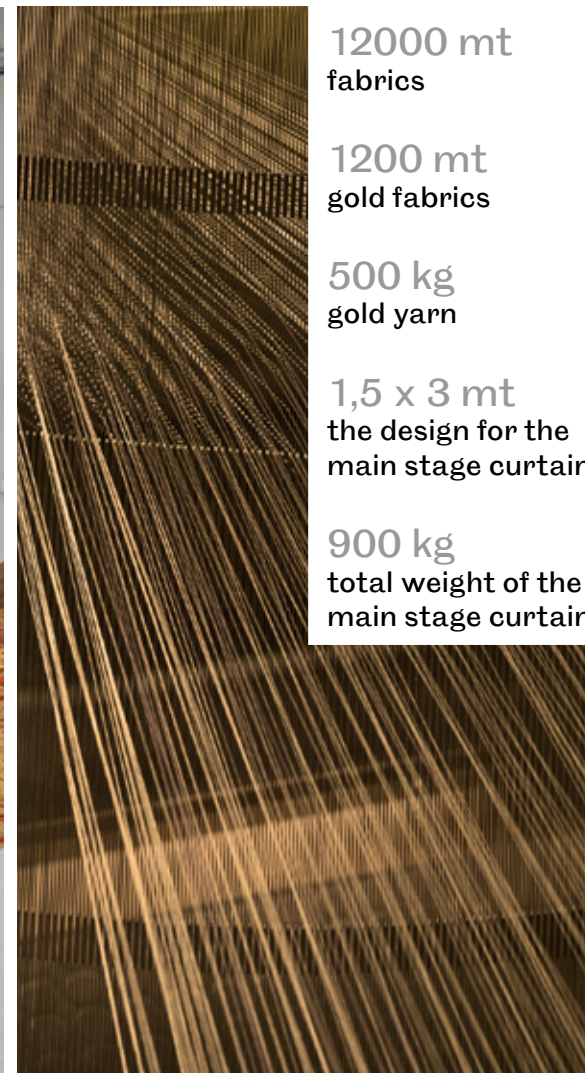
MOSCOW





# Teatro Bolshoi

MOSCOW



12000 mt  
fabrics

1200 mt  
gold fabrics

500 kg  
gold yarn

1,5 x 3 mt  
the design for the  
main stage curtain

900 kg  
total weight of the  
main stage curtain

“Precious and unique”

RUBELLI