



CLARKE & CLARKE

STUDIO
g

SPRING/SUMMER COLLECTIONS 2021



Headboard: Scintilla Blush Cushions front to back: Ombre Blush/Charcoal, Camile Blush/Charcoal and Allure Espresso

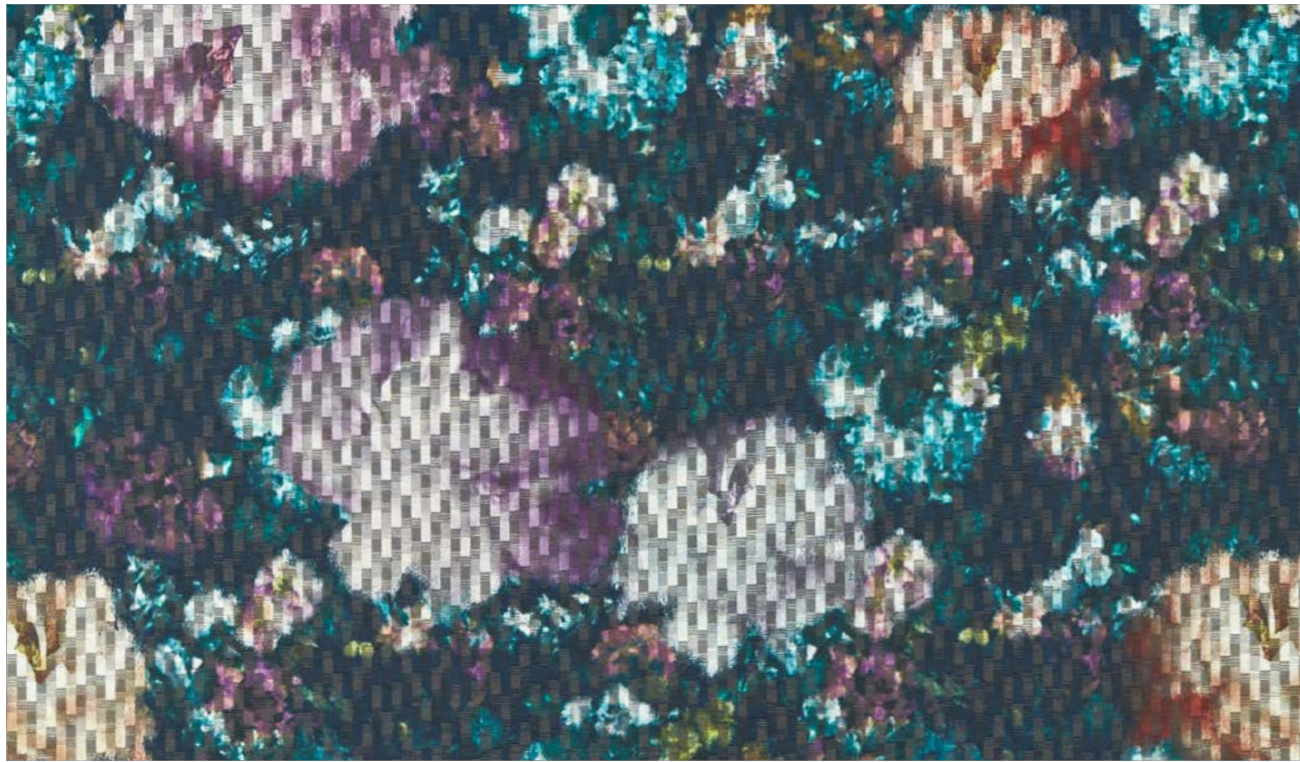
Fusion Collection

A dramatic collection of sumptuous cut velvets, printed weaves and intricate embroideries, all unite in a fusion of intense colour. Soft painterly florals and brush stroke marks create impressions of abstract shapes and movement. Intense shades of midnight, spice and teal are styled with subtle interplays of blush, ivory and natural tones, blending to create interesting mixes within the colour palettes.



(Top) Screen: Camile Blush/Charcoal Chair: Impression Blush (Bottom left) Cushion: Scintilla Blush (Bottom right) Drapes: Ombre Blush/Charcoal

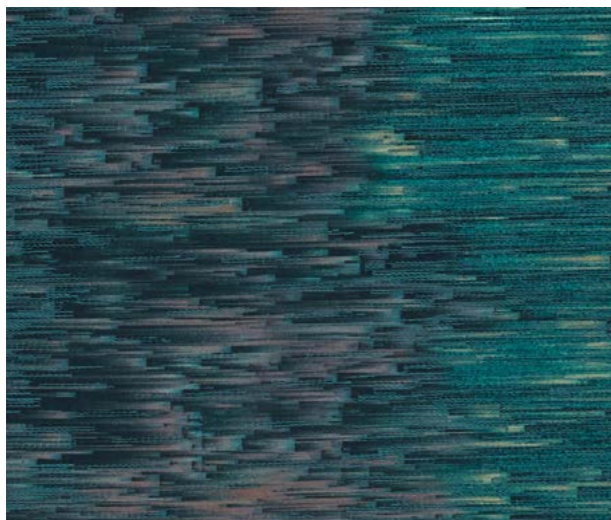
Fusion Collection



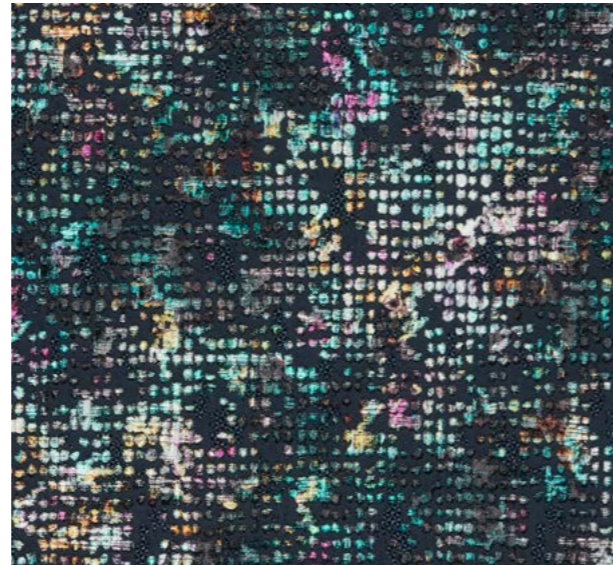
CAMILE Midnight F1523/03



IMPRESSION Midnight F1526/02



OMBRE Midnight F1524/03



SCINTILLA Midnight F1525/02



ALLURE Midnight F1069/23



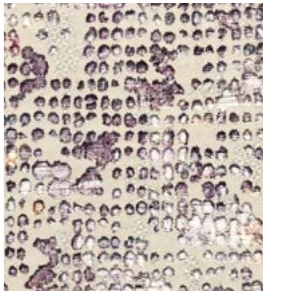
ALLURE Peacock F1069/29



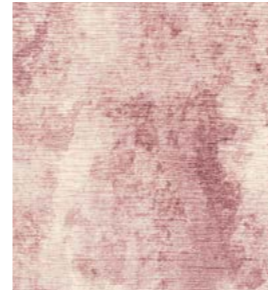
ALLURE Blush F1069/05



ALLURE Espresso F1069/15



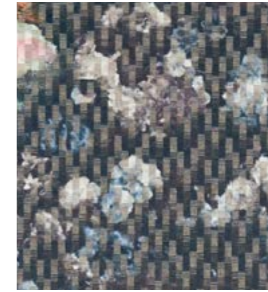
SCINTILLA Blush F1525/01



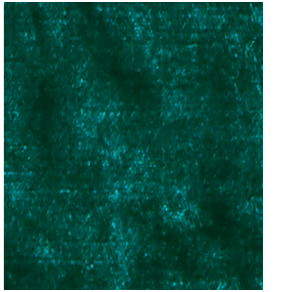
IMPRESSION Blush F1526/01



OMBRE Blush/Charcoal F1524/01



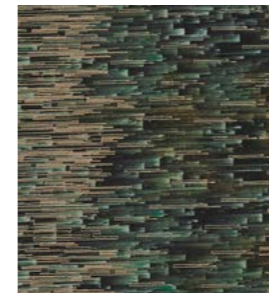
CAMILE Blush/Charcoal F1523/01



ALLURE Jade F1069/21



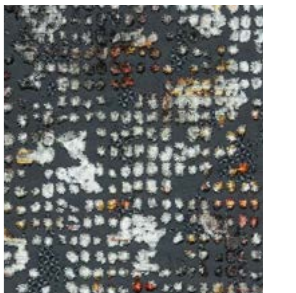
ALLURE Spice F1069/38



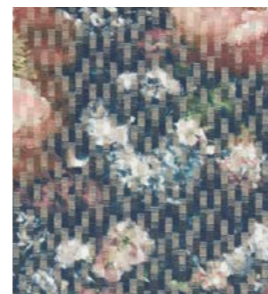
OMBRE Spice F1524/04



IMPRESSION Natural F1526/03



SCINTILLA Spice/Dusk F1525/03



CAMILE Spice/Dusk F1523/04



ALLURE Silver F1069/36



ALLURE Gold F1069/17



SCINTILLA Natural F1525/04





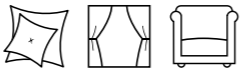
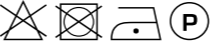

IMPRESSION Pewter F1526/04



OMBRE Charcoal F1524/02



CAMILE Chartreuse/Charcoal F1523/02

End Use Endnutzeranwendung Uso final Usage Applicazioni		Camile & Ombre 		Care Instructions Pflegehinweise Indicaciones para el cuidado Instructions d'entretien Istruzioni per la cura		Allure 		Composition Zusammensetzung Composición Composizione	
Allure, Impression & Scintilla 						Camile, Impression & Scintilla 		CO- Cotton- Baumwolle- Algodón- Coton- Cotone PES- Polyester- Polyester- Poliéster- Poliestere- Poliestere VI- Viscose- Viskose- Viscosa- Viscose- Viscosa	
Ombre 									
Design Design Diseño Tissu Linea	Colours Farben Colores Couleurs Colori	Vertical Repeat Senkrechter Musterrapport Repetición vertical Motif vertical Ripetizione verticale	Horizontal Repeat Waagerechter Musterrapport Repetición horizontal Motif horizontal Ripetizione orizzontale	Fabric Width Breite Anchura Largeur Larghezza tessuto	Weight Gewicht Peso Poids Peso	Composition Zusammensetzung Composición Composizione	Side Match Musteransatz Repetición de patrón lado con lado Raccord Corrispondenza laterale	Martindale Abrasion Martindale-Abriebtest Abrasión Martindale Resistenza all'abrasione- Martindale	FR Specification Brandschutzspezifikation Especificación ignífuga Spécifications ignifuges Specifica FR
Allure	8	n/a	n/a	140cm (55 1/8")	518g/m ² (15.28oz/yd ²)	100% PES	n/a	250 000	*Meets when treated: Domestic Upholstery and Contract Upholstery
Camile	4	78.5cm (30 15/16")	68.5cm (27")	137cm (53 15/16")	210g/m ² (6.19oz/yd ²)	70% COT, 30% PES	Note: Repeats stated are the print design, which is a straight match. Woven base repeat may vary and this must be checked prior to make up.	n/a	*Meets when treated: Contract Curtains
Impression	4	47cm (18 1/2")	47cm (18 1/2")	141cm (55 1/2")	406g/m ² (11.97oz/yd ²)	100% PES	Straight	35 000	*Meets when treated: Domestic Upholstery, Contract Upholstery and Contract Drapes.
Ombre	4	71cm (27 15/16")	68.7cm (27 1/16")	137.5cm (54 1/8")	267g/m ² (7.87oz/yd ²)	100% COT	Note: Repeats stated are the print design, which is a straight match. Embroidery is random/not matched.	n/a	*Meets when treated: Contract Curtains
Scintilla	4	48cm (18 7/8")	35cm (13 3/4")	140cm (55 1/8")	390g/m ² (11.5oz/yd ²)	59.5% Polyester, 40.5% Viscose	Note: Repeats stated are of the woven design, which is a straight match. Print design on pile is random.	50 000+	*Meets when treated: Domestic Upholstery, Contract Upholstery and Contract Drapes.

ECO Sustainable Weaves

Manufactured entirely from recycled plastic bottles, the collection Eco speaks to both the style and environmentally conscious consumer. This comprehensive collection has contributed to caring for the planet - recycling 90 plastic bottles on average creates 1 metre of fabric.

A classic herringbone, rustic multi coloured plain and a soft distressed chenille create a perfect union of 3 durable, easy to use designs. Washable with a beautiful soft handle, these versatile dual purpose designs are suitable for all decorative applications.

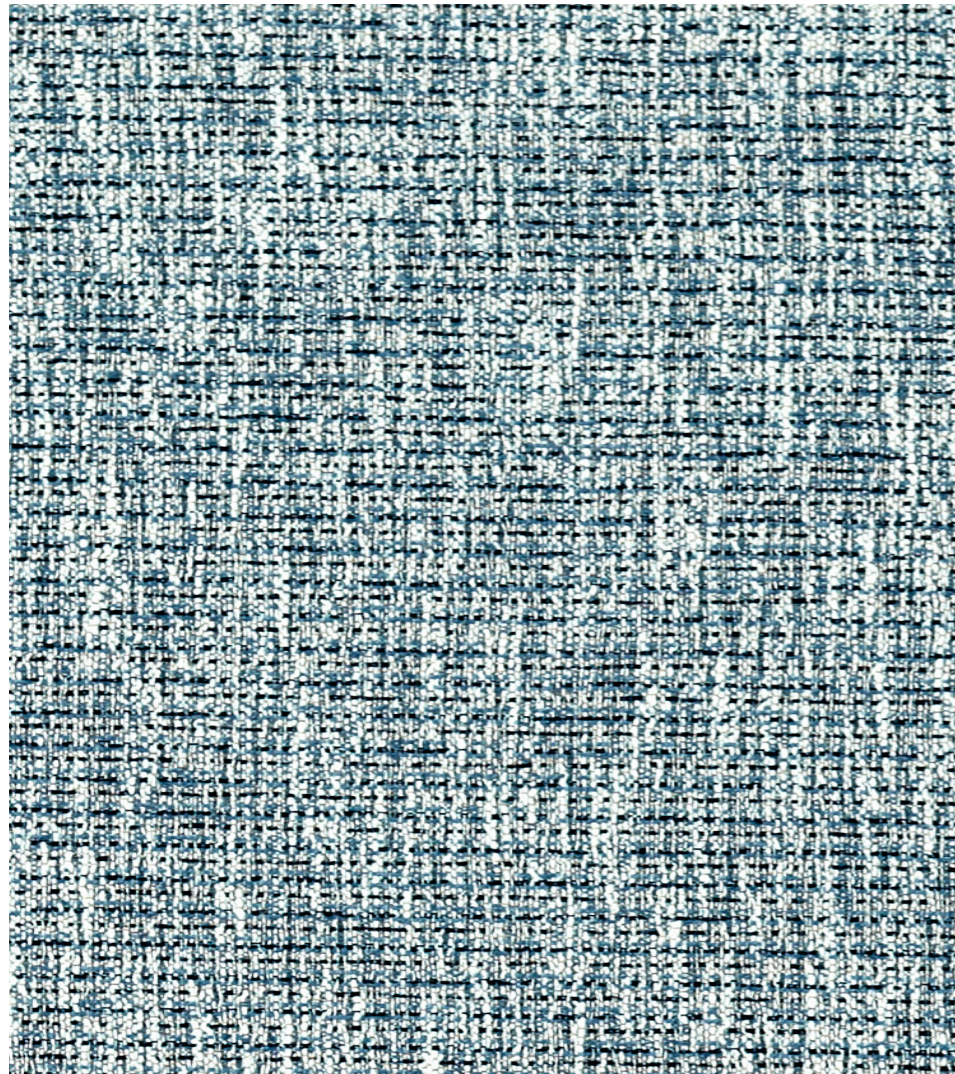


(Top) Bed Throw: Avani & Gaia Blush Cushions: Gaia Blush, Tierra Blush

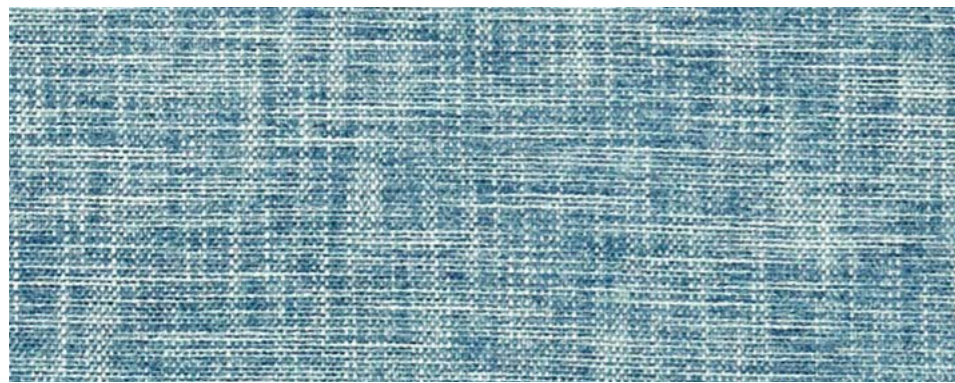
Drapes: Avani Linen Armchair: Gaia Denim Cushions left to right: Avani Denim, Gaia Linen & Denim, Tierra Midnight



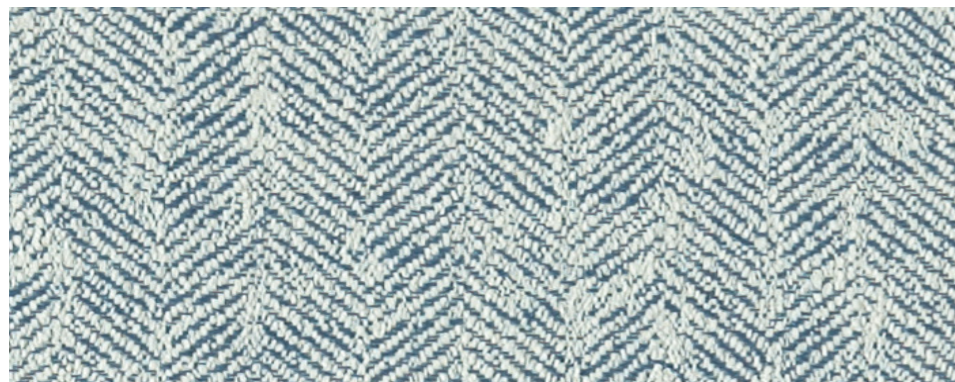
ECO Sustainable Weaves



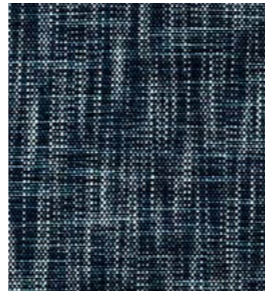
AVANI Denim F1527/04



GAIA Denim F1528/04



TIERRA Denim F1529/04



GAIA Midnight
F1528/08



TIERRA Midnight
F1529/06



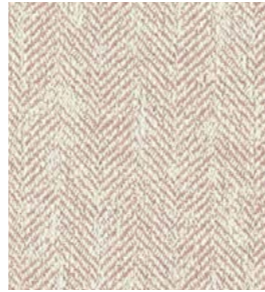
AVANI Blush
F1527/01



GAIA Blush
F1528/02



GAIA Natural
F1528/10



TIERRA Blush
F1529/02



TIERRA Linen
F1529/05



AVANI Mineral
F1527/06



AVANI Linen
F1527/05



GAIA Mineral
F1528/09



GAIA Linen
F1528/07



TIERRA Mineral
F1529/07



AVANI Chartreuse
F1527/03



GAIA Pewter
F1528/11



GAIA Gunmetal
F1528/06



TIERRA Pewter
F1529/08



AVANI Teal/Spice
F1527/07



GAIA Antique
F1528/01



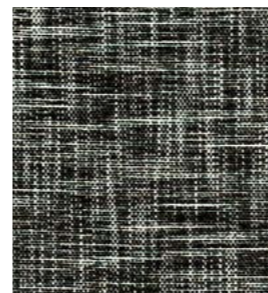
GAIA Flax
F1528/05



TIERRA Antique
F1529/01



AVANI Charcoal
F1527/02



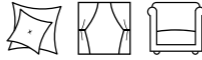
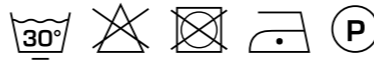
GAIA Charcoal
F1528/03



TIERRA Silver
F1529/09



TIERRA Charcoal
F1529/03

End Use Endnutzeranwendung Uso final Usage Applicazioni				Care Instructions Pflegehinweise Indicaciones para el cuidado Instructions d'entretien Istruzioni per la cura				Composition Zusammensetzung Composición Composition Composizione		100% Recycled Polyester - Recycltes Polyester - Poliéster Reciclado - Polyester Recyclé - Poliester Riciclato	
Design Design Diseño Tissu Linea	Colours Farben Colores Couleurs Colori	Vertical Repeat Senkrechter Musterrapport Repetición vertical Motif vertical Ripetizione verticale	Horizontal Repeat Waagerechter Musterrapport Repetición horizontal Motif horizontal Ripetizione orizzontal	Fabric Width Breite Anchura Largeur Larghezza tessuto	Weight Gewicht Peso Poids Peso	Martindale Abrasion Martindale-Abriebtest Abrasion Martindale Abrasion de Martindale Resistenza all'abrasione- Martindale	FR Specification Brandschutzspezifikation Especificación ignífuga Spécifications ignifuges Specifica FR				
Avani	7	1.3cm (½")	n/a	138cm (54 ⅝")	510g/m ² (15.04oz/yd ²)	70 000	*Meets when treated: Domestic Upholstery, Contract Curtains, Contract Upholstery (with Interliner), IMO7, IMO8.				
Gaia	11	n/a	n/a	138cm (54 ⅝")	511g/m ² (15.07oz/yd ²)	40 000					
Tierra	9	98cm (38 ⅝")	34.5cm (13 ⅝")	138cm (54 ⅝")	499g/m ² (14.72oz/yd ²)	70 000					

Pomarium Collection

Beautiful intricate fruit embroideries are teamed with hand drawn, botanical illustrations of wild trailing fruit and flowers. Pomarium conjures the warmth of Sicilian lemon groves and wild fruit orchards. This vibrant collection inspires a fresh yet country feel, rustic printed linens and dense matt velvets add a touch of classic luxury. Enhanced by dramatic shades of rich autumnal russet, teal and charcoal combinations, through to vibrant citrus and soft blush hues. To add an element of 'Country Core' Edgeworth's simple gingham check and stripe work alongside Amalfi, a relaxed versatile cotton plain.



(Top right) Drape: Sorrento Autumn Chair: Sorrento Teal Velvet Cushion: Falena Mineral/Rose Gold
 (Bottom) Cushions left to right: Sicilian Orange, Sorrento Mineral, Windsor Ochre, Falena Linen/Gold
 Throw: Sicilian Orange Drape: Sorrento Mineral



Drape: Sicilian Lemon Sofa: Sorrento Ebony Velvet Cushions left to right: Falena Blush/Gold, Sicilian Lemon, Windsor Sage, Sorrento Multi/Linen

Pomarium Collection



SICILIAN Lemon F1508/01



AMALFI Forest F1239/25



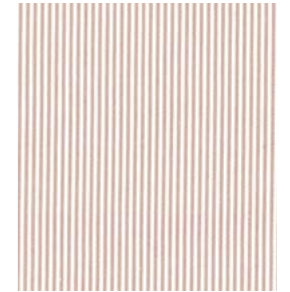
SORENTO Ebony Velvet F1510/01



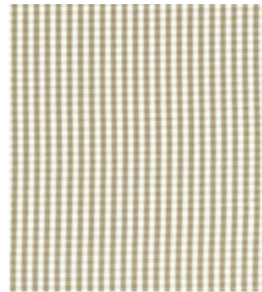
AMALFI Heather F1239/28



AMALFI Linen F1239/36



BRETON Blush F1498/01



WINDSOR Blush F1505/01



FAENA Blush/Gold F1507/01



SORENTO Blush F1509/02



AGRIAS Grapefruit F1506/01



AMALFI Antique F1239/03



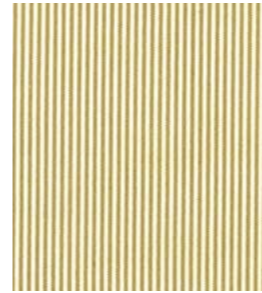
SORENTO Multi/Linen F1509/04



AGRIAS Lime F1506/02



AMALFI Putty F1239/52



BRETON Ochre F1498/06



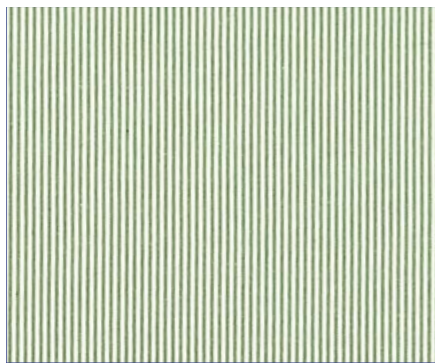
WINDSOR Ochre F1505/07



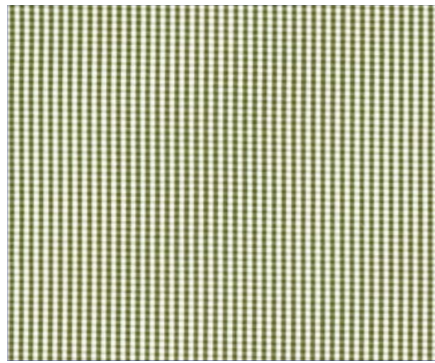
SORENTO Mineral F1509/03



SICILIAN Orange F1508/02



BRETON Sage F1498/08



WINDSOR Sage F1505/10



AMALFI Jade F1239/32



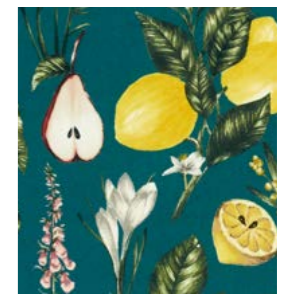
AMALFI Surf F1239/64



BRETON Linen F1498/05



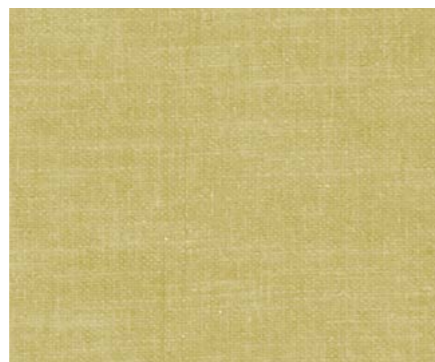
WINDSOR Linen F1505/05



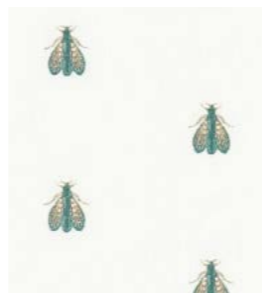
SORENTO Teal Velvet F1510/02



FAENA Linen/Gold F1507/02



AMALFI Chartreuse F1239/10



FAENA Mineral/Rose Gold F1507/03



SORENTO Autumn F1509/01

Pomarium Collection
Technical Information

End Use Endnutzeranwendung Uso final Usage Applicazioni		Agrias, Falena & Sicilian		Care Instructions Pfleheinweise Indicaciones para el cuidado Instructions d'entretien Istruzioni per la cura	Breton & Windsor		Composition Zusammensetzung Composición Composizione	COT- Cotton- Baumwolle- Algodón- Coton- Cotone LI- Linen- Leinen- Lino- Lin- Lino PES- Polyester- Polyester- Poliéster- Poliestere- Poliestere VI- Viscose- Viskose- Viscosa- Viscose- Viscosa. EMB- Embroidery- Stickerei- Bordado- Broderie- Ricamo	
		Amalfi, Breton, Sorento, Sorento Velvet & Windsor			Amalfi				
					Agrias, Falena, Sicilian, Sorento and Sorento Velvet				
Design Design Diseño Tissu Linea	Colours Farben Colores Couleurs Colori	Vertical Repeat Senkrechter Musterrapport Repetición vertical Motif vertical Ripetizione verticale	Horizontal Repeat Waagerechter Musterrapport Repetición horizontal Motif horizontal Ripetizione orizzontale	Fabric Width Breite Anchura Largeur Larghezza tessuto	Weight Gewicht Peso Poids Peso	Composition Zusammensetzung Composición Composizione	Side Match Musteransatz Repetición de patrón lado con lado Raccord Corrispondenza laterale	Martindale Abrasion Martindale-Abriebtest Abrasion Martindale Resistenza all'abrasione- Martindale	FR Specification Brandschutzspezifikation Especificación ignífuga Spécifications ignifuges Specifica FR
Agrias	2	48cm (18 7/16")	43.3cm (17 1/16")	130cm (51 3/16")	217g/m ² (6.4oz/yd ²)	53% PES, 48% COT EMB: 100% VI	Straight	n/a	*Meets when treated: Contract Drapery
Amalfi	8	n/a	n/a	137cm (53 15/16")	370g/m ² (10.91oz/yd ²)	77% COT, 23% PES	Straight	70 000	Meets untreated: BS5852 Source 0 *Meets when treated: Domestic Upholstery, Contract Upholstery, Contract Drapery, USA and IMO Standards
Breton	4	n/a	0.5cm (3/16")	140cm (55 1/8")	285g/m ² (8.4oz/yd ²)	100% COT	Straight	30 000	*Meets when treated: Domestic Upholstery, Contract Drapery and Contract Upholstery
Falena	3	24cm (9 7/16")	21.6cm (8 1/2")	130cm (51 3/16")	217g/m ² (6.4oz/yd ²)	53% PES, 48% COT EMB: 100% VI	Half Drop	n/a	*Meets when treated: Contract Drapery
Sicilian	2	48cm (18 7/16")	43.3cm (17 1/16")	130cm (51 3/16")	217g/m ² (6.4oz/yd ²)	53% PES, 48% COT EMB: 100% VI	Straight	n/a	*Meets when treated: Contract Drapery
Sorento	4	42.6cm (16 3/4")	46cm (18 1/8")	138cm (54 5/16")	327g/m ² (9.6oz/yd ²)	75% VI, 25% LI	Straight	35 000	Meets untreated: BS5852 Source 0 Meets when treated: Domestic Upholstery, Contract Upholstery & Contract Drapery
Sorento Velvet	2	42.6cm (16 3/4")	46cm (18 1/8")	138cm (54 5/16")	406g/m ² (11.9oz/yd ²)	100% PES	Straight	50 000	Meets when treated: Domestic Upholstery, Contract Upholstery & Contract Drapery
Windsor	4	0.9cm (3/8")	0.9cm (3/8")	140cm (55 1/8")	250g/m ² (7.37oz/yd ²)	100% COT	Straight	30 000	*Meets when treated: Domestic Upholstery, Contract Drapery and Contract Upholstery

Edgeworth Collection

A timeless collection of 57 versatile woven cotton stripes and checks. Dual purpose designs are beautifully crafted by the use of secondary herringbone and textured ribbed effects. Simple gingham checks and ticking stripes are teamed with a block and two coloured stripes. Classic shades of denim, midnight and rouge are styled with chartreuse, emerald and blush to add a fresh modern twist. These washable designs truly do create the quintessential 'Go to Collection' for easy living style.



(Top left) Sofa: Breton Charcoal Cushions left to right: Sutton Charcoal, Windsor Charcoal, Portland Ebony
 (Top right) Drapes: Edison Racing Green/Linen with Breton Blush Border Chaise: Portland Racing Green
 Cushions front to back: Windsor Blush, Belgravia Racing Green/Linen, Portland Linen (Bottom) Canopy: Belgravia Ochre/Charcoal
 Throw: Windsor Sage and Ochre



Drapes: Breton Chambray Chair: Edison Denim Sofa: Knightsbridge Denim
 Cushions left to right: Spencer Denim, Windsor Chambray, Kinburn Denim Footstool: Portland Denim

Edgeworth Collection



HARTFORD Denim F0498/04



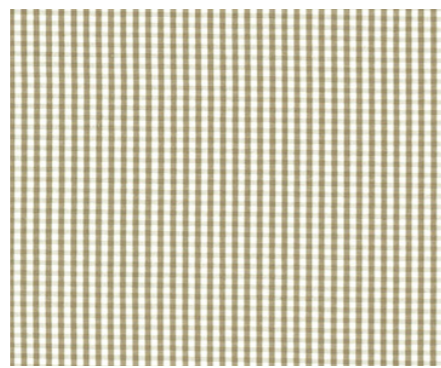
AVIEMORE Denim F0947/02



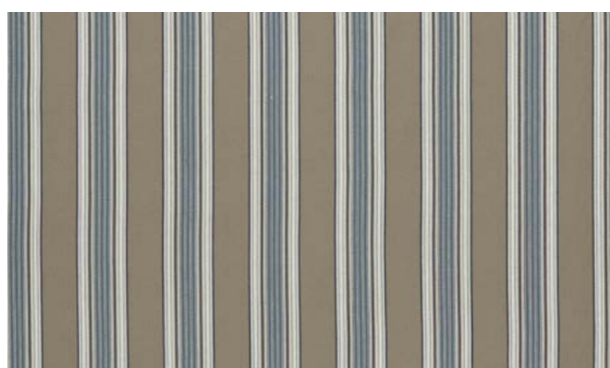
KINBURN Denim F0585/02



BRETON Dove 1498/04



WINDSOR Dove F1505/04



MARYLEBONE Denim/Linen F1502/01



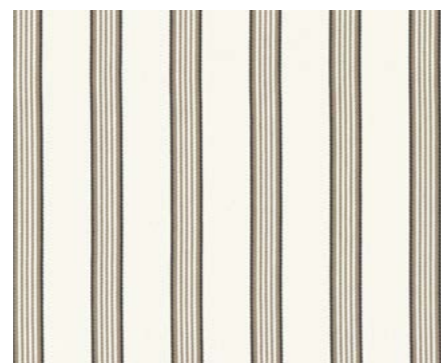
PORTLAND Denim F1503/01



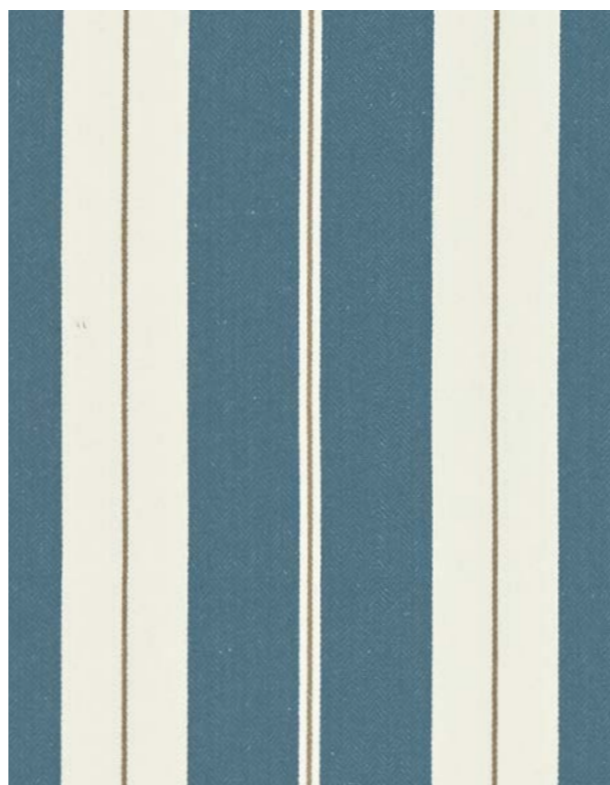
STAMFORD Denim F0501/04



KNIGHTSBRIDGE Ochre/Charcoal F1500/04



EDISON Charcoal/Natural F1499/01



BELGRAVIA Denim/Linen F1497/02



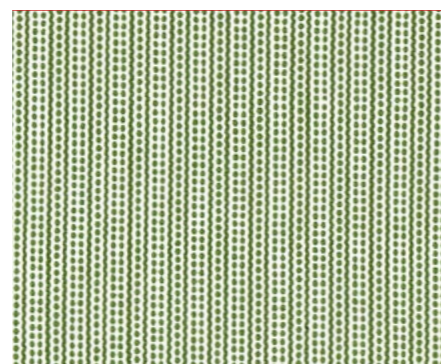
SUTTON Charcoal F0420/01



GLENMORE Flannel F0949/04



MARYLAND Ochre/Charcoal F1501/03



SPENCER Sage F1504/05

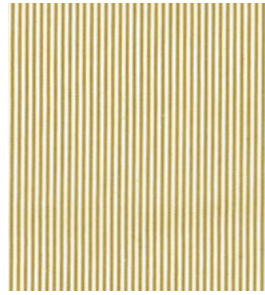


CONISTON Navy F0421/04

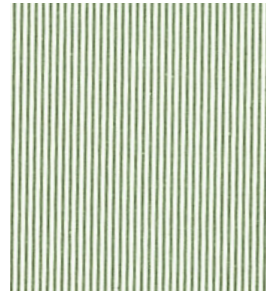


OXFORD Red F0419/04

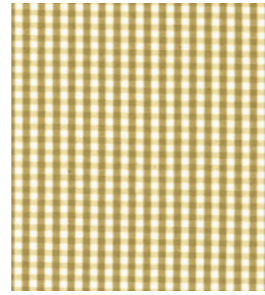
Edgeworth Collection



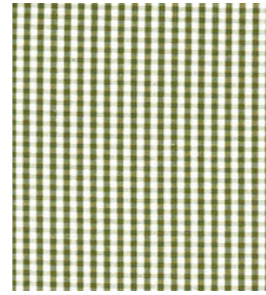
BRETON Ochre
F1498/06



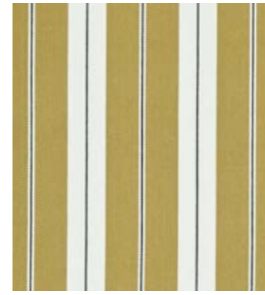
BRETON Sage
F1498/08



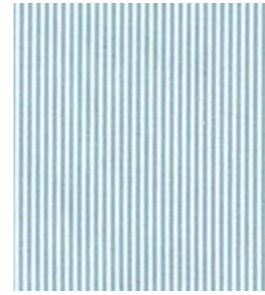
WINDSOR Ochre
F1505/07



WINDSOR Sage
F1505/10



BELGRAVIA Ochre/
Charcoal F1497/04



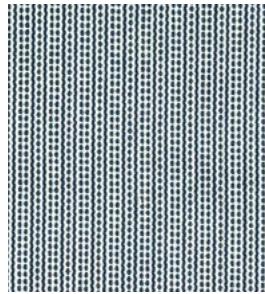
BRETON Chambray
F1498/02



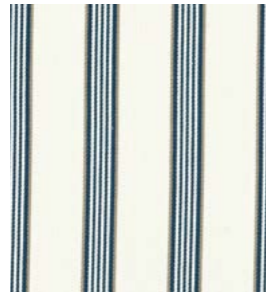
WINDSOR Chambray
F1505/02



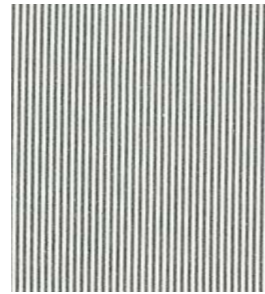
KNIGHTSBRIDGE
Denim F1500/01



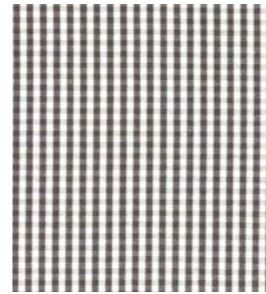
SPENCER Denim
F1504/01



EDISON Denim
F1499/02



BRETON Charcoal
F1498/03



WINDSOR Charcoal
F1505/03



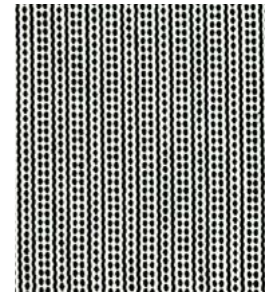
KNIGHTSBRIDGE
Charcoal/Linen
F1500/02



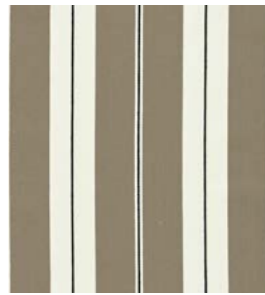
PORTLAND Ebony
F1503/02



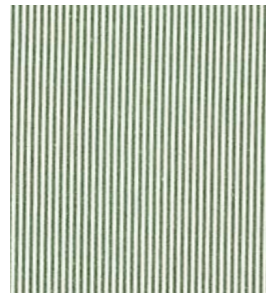
MARYLAND Charcoal/
Natural F1501/01



SPENCER Ebony
F1504/02



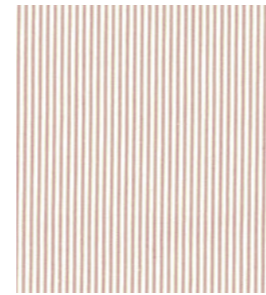
BELGRAVIA Charcoal/
Linen F1497/01



BRETON Racing Green
F1498/07



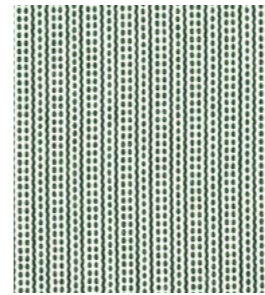
WINDSOR Racing Green
F1505/08



BRETON Blush
F1498/01



WINDSOR Blush
F1505/01



SPENCER Racing Green
F1504/04



SPENCER Linen
F1504/03



PORTLAND Racing
Green F1503/05



EDISON Racing Green/
Linen F1499/03



BRETON Linen
F1498/05



WINDSOR Linen
F1505/05



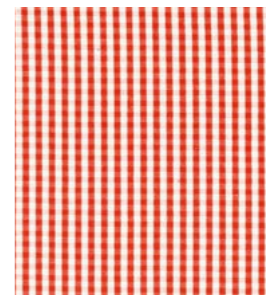
BELGRAVIA Racing
Green/Linen F1497/05



PORTLAND Linen
F1503/03



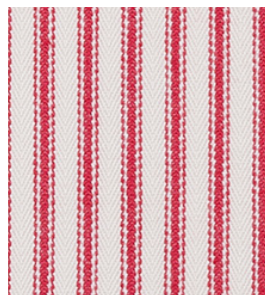
WINDSOR Navy
F1505/06



WINDSOR Rouge
F1505/09



AVIEMORE Flannel
F0947/04



SUTTON Red
F0420/06



SUTTON Navy
F0420/04



PORTLAND Navy
F1503/04



MARYLAND Denim
F1501/02



KNIGHTSBRIDGE
Navy/Rouge
F1500/03




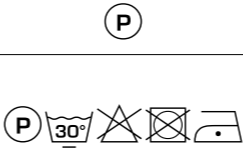
MARYLEBONE
Navy/Rouge
F1502/02



BELGRAVIA Navy/
Rouge F1497/03



GLENMORE Red
F0949/08

End Use Endnutzeranwendung Us final Usage Applicazioni			Care Instructions Pfleheinweise Indicaciones para el cuidado Instructions d'entretien Istruzioni per la cura	Aviemore, Glenmore & Kinburn		Composition Zusammensetzung Composición Composition Composizione	COT - Cotton - Baumwolle - Algodón - Coton - Cotone LI - Linen - Leinen - Lino - Lin - Lino PES - Polyester - Polyester - Poliéster - Poliestere - Poliestere VI - Viscose - Viskose - Viscosa - Viscose - Viscosa	
Design Design Diseño Tissu Linea	Colours Farben Colores Couleurs Colori	Vertical Repeat Senkrechter Musterrapport Repetición vertical Motif vertical Ripetizione verticale	Horizontal Repeat Waagerechter Musterrapport Repetición horizontal Motif horizontal Ripetizione orizzontale	Fabric Width Breite Anchura Largeur Larghezza tessuto	Weight Gewicht Peso Poids Peso	Martindale Abrasion Martindale-Abriebtest Abrasión Martindale Abrasion de Martindale Resistenza all'abrasione- Martindale	Composition Zusammensetzung Composición Composition Composizione	FR Specification Brandschutzspezifikation Especificación ignífuga Spécifications ignifuges Specifica FR
Aviemore	2	6.5cm (2 5/16")	7cm (2 3/4")	137cm (53 15/16")	326g/m ² (9.61oz/yd ²)	100 000	50% COT, 50% PES	*Meets when treated: Domestic Upholstery, Contract Drapery and Contract Upholstery
Belgravia	5	n/a	16cm (6 5/16")	140cm (55 1/8")	280g/m ² (8.25oz/yd ²)	30 000	100% COT	*Meets when treated: Domestic Upholstery, Contract Drapery and Contract Upholstery
Breton	8	n/a	0.5cm (3/16")	140cm (55 1/8")	285g/m ² (8.4oz/yd ²)	30 000	100% COT	*Meets when treated: Domestic Upholstery, Contract Drapery and Contract Upholstery
Coniston	1	2.5cm (1")	2.5cm (1")	140cm (55 1/8")	210g/m ² (6.19oz/yd ²)	20000	100% COT	Meets untreated: Source 0. *Meets when treated: Domestic Upholstery and Contract Drapery
Edison	3	n/a	5.5cm (2 3/16")	140cm (55 1/8")	340g/m ² (10oz/yd ²)	30 000	100% COT	*Meets when treated: Domestic Upholstery, Contract Drapery and Contract Upholstery
Glenmore	2	22.3cm (8 3/4")	23cm (9 1/16")	137cm (53 15/16")	316g/m ² (9.32oz/yd ²)	100 000	50% COT, 50% PES	*Meets when treated: Domestic Upholstery, Contract Drapery and Contract Upholstery
Hartford	1	n/a	35.5cm (14")	140cm (55 1/8")	290g/m ² (8.55oz/yd ²)	40 000	100% COT	*Meets when treated: Domestic Upholstery, Contract Drapery and Contract Upholstery
Kinburn	1	n/a	13.7cm (5 3/8")	137cm (53 15/16")	490g/m ² (14.45oz/yd ²)	25 000	80% VI 20% LI	*Meets when treated: Domestic Upholstery and Contract Drapery
Knightsbridge	4	n/a	11.5cm (4 1/2")	140cm (55 1/8")	500g/m ² (14.74oz/yd ²)	35 000	100% COT	*Meets when treated: Domestic Upholstery, Contract Drapery and Contract Upholstery
Maryland	3	n/a	9.3cm (3 11/16")	140cm (55 1/8")	420g/m ² (12.39oz/yd ²)	40 000	100% COT	*Meets when treated: Domestic Upholstery, Contract Drapery and Contract Upholstery
Marylebone	2	n/a	17cm (6 11/16")	140cm (55 1/8")	380g/m ² (12.2oz/yd ²)	40 000	100% COT	*Meets when treated: Domestic Upholstery, Contract Drapery and Contract Upholstery
Oxford	1	n/a	7cm (2 3/4")	140cm (55 1/8")	210g/m ² (6.19oz/yd ²)	20 000	100% COT	*Meets when treated: Domestic Upholstery and Contract Drapery
Portland	5	n/a	9.5cm (3 3/4")	140cm (55 1/8")	339g/m ² (10oz/yd ²)	30 000	100% COT	*Meets when treated: Domestic Upholstery, Contract Drapery and Contract Upholstery
Spencer	5	0.5cm (3/16")	2cm (13/16")	140cm (55 1/8")	502g/m ² (14.81oz/yd ²)	25 000	100% COT	*Meets when treated: Domestic Upholstery, Contract Drapery and Contract Upholstery
Stamford	1	n/a	11.6cm (4 9/16")	140cm (55 1/8")	210g/m ² (6.19oz/yd ²)	40 000	100% COT	*Meets when treated: Domestic Upholstery, Contract Drapery and Contract Upholstery
Sutton	3	n/a	1cm (3/8")	140cm (55 1/8")	210g/m ² (6.19oz/yd ²)	20 000	100% COT	*Meets when treated: Domestic Upholstery and Contract Drapery.
Windsor	10	0.9cm (3/8")	0.9cm (3/8")	140cm (55 1/8")	250g/m ² (7.37oz/yd ²)	30 000	100% COT	*Meets when treated: Domestic Upholstery, Contract Drapery and Contract Upholstery



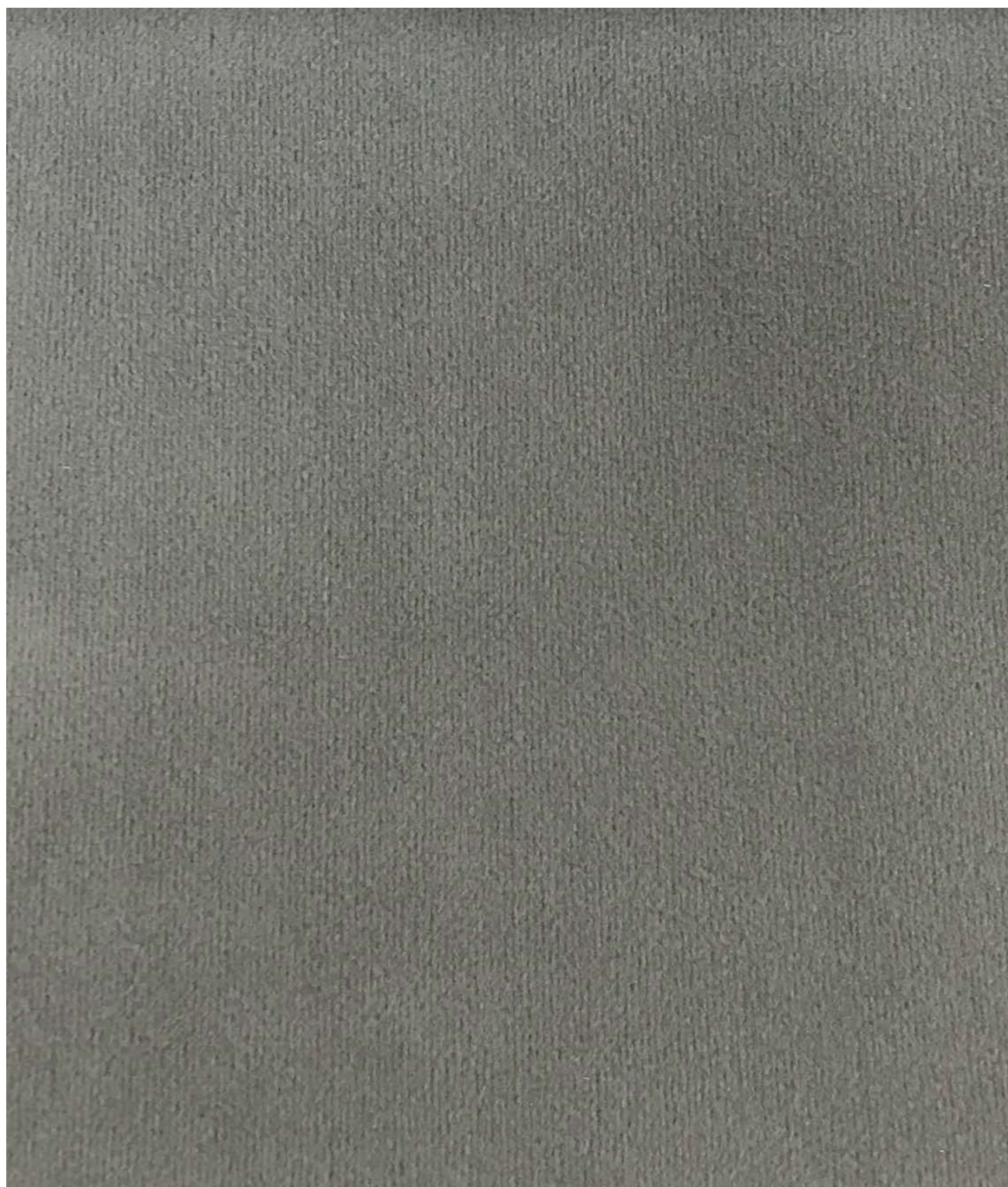
Miami FR Collection

The sumptuous pile of the Miami velvet is a match made in heaven for all contract drapes requirements. This fabulous, 297cm wide-width matt velvet supports a beautiful soft handle and is washable at 30 degrees. The dense pile accentuates the 25 dramatic shades ranging from timeless cream, silver and charcoal through to daring shades of teal, spruce and midnight. All bring a touch of sophistication to sleek metropolitan spaces.



Available in 25 Colours

Miami FR Collection



MIAMI Silver
F1511/21



MIAMI Charcoal
F1511/06



MIAMI Ebony
F1511/11



MIAMI Espresso
F1511/12



MIAMI Ash
F1511/04



MIAMI Taupe
F1511/23



MIAMI Cream
F1511/10



MIAMI Beaver
F1511/05



MIAMI Chive
F1511/08



MIAMI Herb
F1511/16



MIAMI Chartreuse
F1511/07



MIAMI Spruce
F1511/22



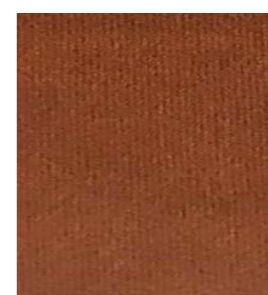
MIAMI Teal
F1511/24



MIAMI Mineral
F1511/18



MIAMI Gold
F1511/14



MIAMI Amber
F1511/02



MIAMI Claret
F1511/09



MIAMI Midnight
F1511/17



MIAMI Wedgewood
F1511/25



MIAMI Aegean
F1511/01



MIAMI Arctic
F1511/03



MIAMI Fuschia
F1511/13



MIAMI Rose
F1511/20





MIAMI Heather
F1511/15



MIAMI Plum
F1511/19

Miami FR Collection
 Technical Information

End Use Endnutzeranwendung Uso final Usage Applicazioni		Care Instructions Pflegehinweise Indicaciones para el cuidado Instructions d'entretien Istruzioni per la cura		Composition Zusammensetzung Composición Composition Composizione	100% FR Polyester - Flammhemmendes Polyester - Poliéster FR - Polyester ignífuge - Poliestere FR
Design Design Diseño Tissu Linea	Colours Farben Colores Couleurs Colori	Fabric Width Breite Anchura Largeur Larghezza tessuto	Weight Gewicht Peso Poids Peso	FR Specification Brandschutzspezifikation Especificación ignífuga Spécifications ignifuges Specifica FR	
Miami	25	297cm (115 ¹⁵ / ₁₆ ")	228g/m ² (6.72oz/yd ²)	Meets untreated: Contract Curtains, Contract Bedding, IMO 7 (Drapes), M1, B1	



Chair: Palm Sky Drapes: Paradise Russet Sofa: Kelso Denim
Cushions left to right: Paradise Russet, Rainforest Autumn, Palm Sky



Amazonia Collection

An exuberant, tropical paradise of pattern. This collection creates a maximalist interior scheme. Flamingos and Toucans roam amongst the passion flowers, guava fruits found in the exotic rainforest. These sumptuous digital printed velvets and cottons, enhance a luxurious and fresh statement. Choose deep midnight for a mysterious jungle vibe, or vibrant citron for a statement colour story.



(Top right) Screen: Fruta Summer Drapes: Fruta Ochre Velvet (Bottom) Drapes: Palm Sky
Chairs: Rainforest Glade Velvet



Drapes: Acadia Blush Canopy: Paradise Blush Bed Throw: Damsel Citron Cushion: Damsel Blush
Footstool: Kelso Denim Throw: Acadia Linen

Amazonia Collection



PARADISE Midnight Velvet F1520/01



DAMSEL Teal F1514/04



RAINFOREST Glade Velvet F1522/01



PALM Sky F1518/02



FRUTA Midnight Velvet F1515/01

Amazonia Collection



KELSO Teal
F1345/41



ACADIA Midnight
F1513/03



PARADISE Teal Velvet
F1520/04



DAMSEL Citron
F1514/02



PARADISE Russet
F1519/03



KELSO Denim
F1345/11



ACADIA Olive/Spice
F1513/05



RAINFOREST Autumn
F1521/01



KELSO Chartreuse
F1345/07



KELSO Raspberry
F1345/32



FRUTA Ochre/Velvet
F1515/03



RAINFOREST Multi/
Velvet F1522/02



PARADISE Ochre Velvet
F1520/03



ACADIA Linen
F1513/02



FRUTA Teal Velvet
F1515/04



PALM Charcoal/Citron
F1518/01



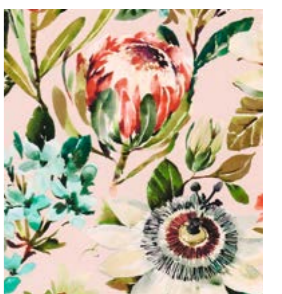
KELSO Blush
F1345/03



KELSO Eau De Nil
F1345/12



DAMSEL Blush
F1514/01



PARADISE Blush
F1519/02



ACADIA Mineral
F1513/04



FRUTA Summer
F1516/01



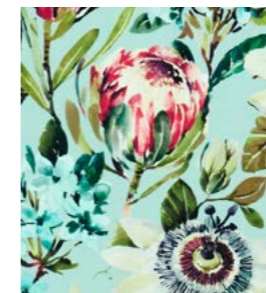
PALM Blush/Velvet
F1517/01



DAMSEL Mineral
F1514/03



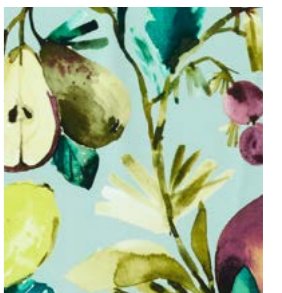
ACADIA Blush
F1513/01



PARADISE Mineral
Velvet F1520/02




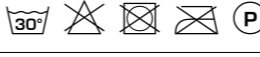
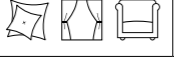

PARADISE Autumn
F1519/01



FRUTA Mineral/
Velvet F1515/02

Amazonia Collection

Technical Information

End Use Endnutzeranwendung Uso final Usage Applicazioni		Damsel 	Care Instructions Pfleheinweise Indicaciones para el cuidado Instructions d'entretien Istruzioni per la cura	Fruta Velvet, Palm Velvet, Paradise Velvet & Rainforest Velvet		Composition Zusammensetzung Composición Composition Composizione	COT - Cotton - Baumwolle - Algodón - Coton - Cotone PES - Polyester - Polyester - Poliéster - Poliestere - Poliestere VI - Viscose - Viskose - Viscosa - Viscose - Viscosa EMB - Embroidery - Stickerei - Bordado - Broderie - Ricamo	
		All other designs 		Kelso, Acadia, Damsel, Fruta, Palm, Paradise & Rainforest				
Design Design Diseño Tissu Linea	Colours Farben Colores Couleurs Colori	Vertical Repeat Senkrechter Musterrapport Repetición vertical Motif vertical Ripetizione verticale	Horizontal Repeat Waagerechter Musterrapport Repetición horizontal Motif horizontal Ripetizione orizzontal	Fabric Width Breite Anchura Largeur Larghezza tessuto	Weight Gewicht Peso Poids Peso	Composition Zusammensetzung Composición Composition Composizione	Abrasion Abriebtest Abrasión Abrasion Resistenza all'abrasione	FR Specification Brandschutzspezifikation Especificación ignífuga Spécifications ignifuges Specifica FR
Acadia	5	63cm (24 13/16")	69cm (27 3/16")	138cm (54 5/16")	227g/m ² (6.7oz/yd ²)	100% COT	Martindale: 20 000	*Meets when treated: Domestic Upholstery
Damsel	4	32.5cm (12 13/16")	43.3cm (17 1/16")	130cm (51 3/16")	217g/m ² (6.4oz/yd ²)	52% PES, 48% COT EMB: 100% VIS	n/a	*Meets when treated: Contract Drapery
Fruta	1	63cm (24 13/16")	69cm (27 3/16")	138cm (54 5/16")	227g/m ² (6.7oz/yd ²)	100% COT	20 000	*Meets when treated: Domestic Upholstery
Fruta Velvet	4	62.5cm (24 5/8")	68cm (26 3/4")	136cm (53 9/16")	277g/m ² (8.17oz/yd ²)	100% PES	100 000	*Meets when treated: Domestic Upholstery For Contract Upholstery treatment and the use of an interliner are required. Not suitable for Contract Curtain treatment.
Kelso	6	n/a	n/a	137cm (53 15/16")	310g/m ² (9.14oz/yd ²)	52% PES, 48% COT	Martindale: 80 000 Wyzenbeek: 100 000	*Meets when treated: Domestic Upholstery For Contract Upholstery treatment and the use of an interliner are required. Not suitable for Contract Curtain treatment.
Palm	2	63cm (24 13/16")	69cm (27 3/16")	138cm (54 5/16")	227g/m ² (6.7oz/yd ²)	100% COT	20 000	*Meets when treated: Domestic Upholstery
Palm Velvet	1	62.5cm (24 5/8")	68cm (26 3/4")	136cm (53 9/16")	277g/m ² (8.17oz/yd ²)	100% PES	100 000	*Meets when treated: Domestic Upholstery For Contract Upholstery treatment and the use of an interliner are required. Not suitable for Contract Curtain treatment.
Paradise	3	34cm (13 3/8")	34cm (13 3/8")	138cm (54 5/16")	217g/m ² (6.4oz/yd ²)	100% COT	20 000	*Meets when treated: Domestic Upholstery
Paradise Velvet	4	34cm (13 3/8")	34cm (13 3/8")	136cm (53 9/16")	277g/m ² (8.17oz/yd ²)	100% PES	100 000	*Meets when treated: Domestic Upholstery For Contract Upholstery treatment and the use of an interliner are required. Not suitable for Contract Curtain treatment.
Rainforest	1	34cm (13 3/8")	34.5cm (13 9/16")	138cm (54 5/16")	217g/m ² (6.4oz/yd ²)	100% COT	20 000	*Meets when treated: Domestic Upholstery
Rainforest Velvet	2	62.5cm (24 5/8")	68cm (26 3/4")	136cm (53 9/16")	277g/m ² (8.17oz/yd ²)	100% PES	100 000	*Meets when treated: Domestic Upholstery For Contract Upholstery treatment and the use of an interliner are required. Not suitable for Contract Curtain treatment.

Montage Collection
SOURCED AS RESPONSIBLE COTTON

This eclectic compendium of fabrics, captures a range of 'Studio G favourites' teamed with an array of fresh new cotton prints. Smart geometrics sit alongside playful sea side elements working with timeless florals, wildlife and country foliage. This collection provides endless design options for both classical and contemporary interiors. Also available as oilcloth (PVC coated).



Chair: Posy Blush Drapes: Kelso Blush Blinds: Gardenia Blush Sofa: Kelso Ivory Cushions left to right: Gardenia Blush, Petal Summer, Rosebud Sage, Dotty Rose, Kelso Chartreuse



(Top) Cushions left to right: Posy Autumn, Dotty Natural, Petal Summer Tablecloth: Gardenia Summer PVC (Bottom right) Blind: Ornella Denim

Montage Collection



GARDENIA Summer F1532/02



PETAL Denim F1534/01



PIERIS Mineral F1535/02



ORNELLA Summer F1533/04



GARDENIA Blush F1532/01



POSY Blush F1536/02



POSY Autumn F1536/01



PETAL Summer F1534/03



PETAL Mineral/Rouge F1534/02



PIERIS Smoke F1535/04



MOORLAND Taupe F0521/05



PIERIS Multi F1535/03



PIERIS Blush F1535/01



MELODIE Natural F0636/02



MOORLAND Duck Egg F0521/03



MOORLAND Green F0521/04



ORNELLA Mineral/Blush F1533/03

Montage Collection



ORNELLA Denim
F1533/02



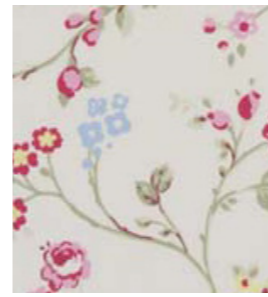
ORNELLA Charcoal/
Chartreuse F1533/01



NEW FOREST Natural
F0785/01



ROSEBUD Sage
F0299/04



BIRD TRAIL Grey
F0293/02



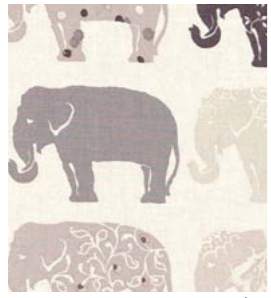
CAPRI Mineral
F0686/04



CAPRI Chartreuse
F0686/03



ROVER Linen
F0524/02



ELEPHANTS Natural
F0794/01



ELEPHANTS Spice
F0794/02



ELEPHANTS Pastel
ZF0722/01



ATLANTIC Blush
F1531/01



ATLANTIC Smoke
F1531/05



ATLANTIC Mineral
F1531/02



ATLANTIC Natural
F1531/03



ATLANTIC Powder Blue
F1531/04



SAIL STRIPE Cloud
F0408/02



SAIL STRIPE Mineral
F0408/03



SAIL STRIPE Marine
F0408/01



SKIPPER Marine
F0409/01



PARTY STRIPE Chambray
F0841/01



ETOILE Denim
F0519/01



ETOILE Linen
F0519/03



ETOILE Smoke
F0519/06



BRIO Denim
F1035/02



BRIO Mineral
F1035/03



BRIO Sorbet
F1035/04



DOTTY Rose
F0063/09



DOTTY Grey
F0063/13



DOTTY Duckegg
F0370/01



DOTTY Smoke
F0063/16



DOTTY Natural
F0063/07



DOTTY Sage
F0063/10



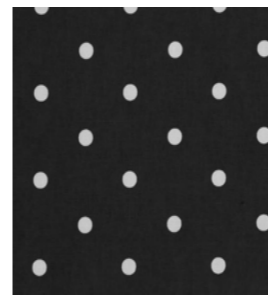
DOTTY Powder Blue
F0063/08



DOTTY Multi
F0063/06



DOTTY Taupe
F0063/12



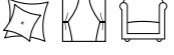

DOTTY Charcoal
F0063/02



CLIO Smoke
F1040/10

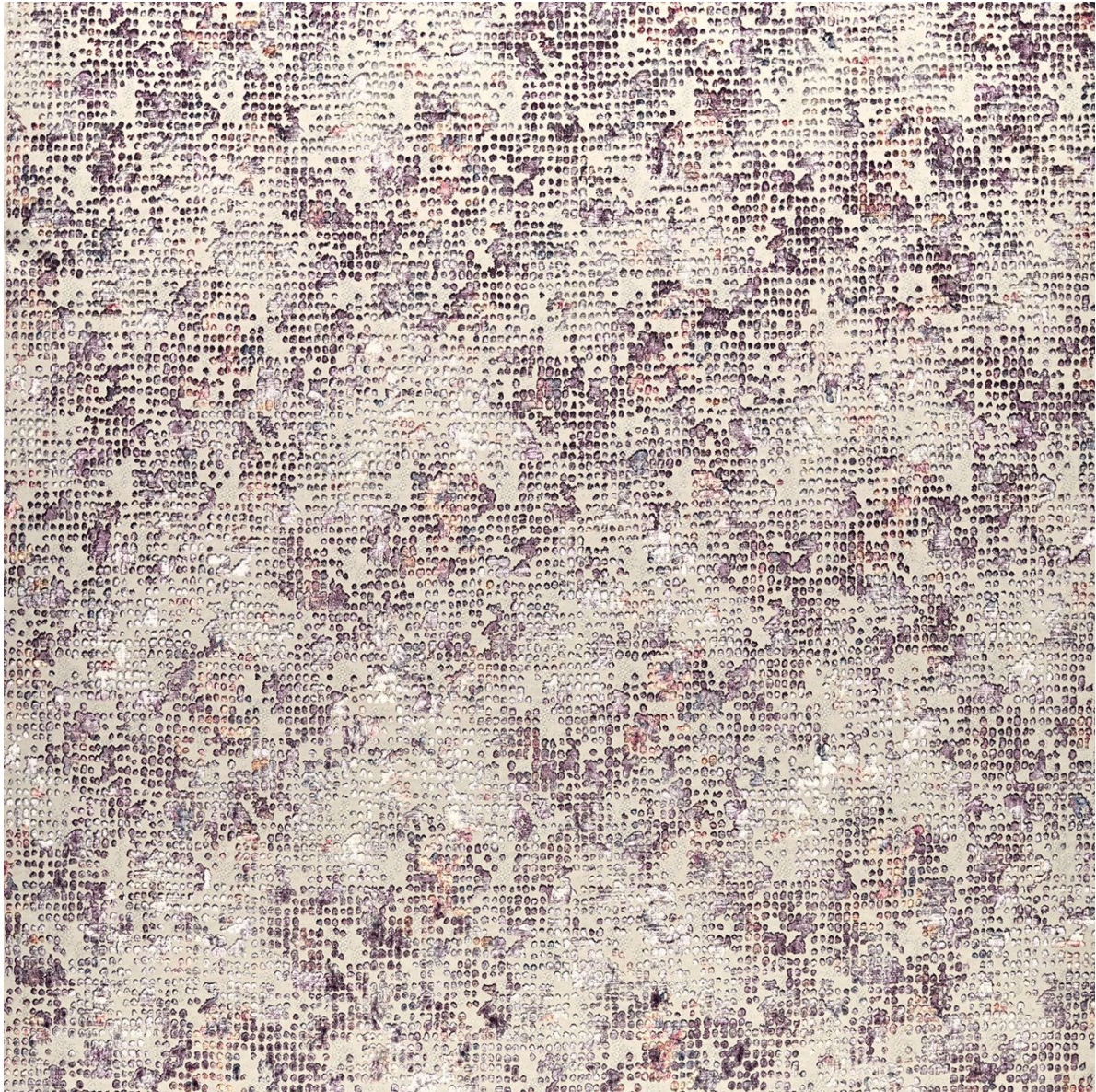
Montage Collection

Technical Information

End Use Endnutzeranwendung Us final Usage Applicazioni				Care Instructions Pflegehinweise Indicaciones para el cuidado Instructions d'entretien Istruzioni per la cura			Composition Zusammensetzung Composición Composizione	100% Cotton - Baumwolle - Algodón- Coton - Cotone
Design Design Diseño Tissu Linea	Colours Farben Colores Couleurs Colori	Vertical Repeat Senkrechter Musterrapport Repetición vertical Motif vertical Ripetizione verticale	Horizontal Repeat Waagerechter Musterrapport Repetición horizontal Motif horizontal Ripetizione orizzontale	Fabric Width Breite Anchura Largeur Larghezza tessuto	Weight Gewicht Peso Poids Peso	Side Match Musteransatz Repetición de patrón lado con lado Raccord Corrispondenza laterale	Abrasion Abriebtest Abrasion Resistenza all'abrasione	FR Specification Brandschutzspezifikation Especificación ignifuga Spécifications ignifuges Specifica FR
Atlantic	5	32cm (12 1/2")	68.5cm (27")	137cm (53 15/16")	225g/m ² (6.62oz/yd ²)	Straight	Martindale: 20 000 Wyzenbeek: 25 000	Meets untreated - BS5852 Source 0 and can be used for domestic furniture with a Schedule 3 Interliner. *Meets when treated: Domestic Upholstery and Contract Drapery
Bird Trail	1	32cm (12 1/2")	68.5cm (27")			Straight		
Brio	3	32cm (12 1/2")	34.25cm (13 1/2")			Straight		
Capri	2	64cm (25 3/16")	34.25cm (13 1/2")			Straight		
Clio	1	17.5cm (6 7/8")	16cm (6 5/8")			Straight		
Dotty	9	5.8cm (2 1/4")	6.8cm (2 3/4")			Straight		
Dotty Duckegg	1	21cm (8")	45.7cm (18")			Straight		
Elephants	3	32cm (12 1/2")	68.5cm (27")			Straight		
Etoile	3	8cm (3")	8.5cm (3 3/8")			Straight		
Gardenia	2	64cm (25 3/16")	137cm (53 15/16")			Straight		
Melodie	1	32cm (12 1/2")	68.5cm (27")			Straight		
Moorland	3	64cm (25 3/16")	68.5cm (27")			Straight		
New Forest	1	32cm (12 1/2")	68.5cm (27")			Straight		
Ornella	4	64cm (25 3/16")	45.7cm (18")			Straight		
Party Stripe	1	n/a	2cm (18 13/16")			Straight		
Petal	3	32cm (12 1/2")	17.1cm (6 3/4")			Straight		
Pieris	4	32cm (12 1/2")	34.25cm (13 1/2")			Straight		
Posy	2	64cm (25 3/16")	45.7cm (18")			Straight		
Rosebud	1	16cm (6 5/16")	34.25cm (13 1/2")			Straight		
Rover	1	32cm (12 1/2")	34.25cm (13 1/2")			Straight		
Sail Stripe	3	n/a	17.1cm (6 3/4")	Straight				
Skipper	1	32cm (12 1/2")	68.5cm (27")	Half Drop				



This collection contains sustainably sourced cotton. For further information please see website.



SCINTILLA favorite_border