

— TODAY'S LIGHTING CLASSICS —

SAVOY HOUSE

JUNE LIGHTING SUPPLEMENT CATALOGUE
2017





Savoy House COLLECTIONS...

These Savoy House Lighting collections fulfill our design mission: to create recognizable and stylish products. We also continue our tradition of matching extraordinary design with value. Our spectacular presentation of collections continues the traditional Savoy experience of excitement and satisfaction with our lighting.

Along with our passion for great design is our commitment to quality engineering and demanding production standards.

Savoy House Lighting products undergo countless inspections and rigid testing, all performed by a highly trained and competent staff of inspectors and product specialists, before leaving the factory. Marvelous design, superior quality standards and notable value are all things our clients have come to expect from Savoy House ever since we were founded in 1965.

Our hope is that Savoy House Lighting's merchandise and exemplary service will make the demands of your job a lot easier. The commitment we have extends not only to our design and quality, but to you, our valued customers.

As always, we thank you for our continued growth, which is made possible through your kind and loyal support.



CONTENTS

ALPHABETICAL LISTING *by* FAMILY:

OUTDOOR

Lakewood	76
Norwalk.....	82
Reading	78
Shelton.....	80

INTERIOR

Allman.....	14, 66	Hasting.....	10
Amador.....	40	Keating	42, 71
Bangle.....	6, 65	Lansing.....	60
Cardella.....	8, 64	Madison	50
Carrolton.....	34	Payton	72
Chaplin	74	Piccardy	44
Chennai.....	22	Putnam.....	26
Citrine.....	4	Rotterdam.....	16
Endicott.....	54	Salvador.....	63
Epsilon	18	Santiago.....	38, 70
Findlay	36	St. Clare.....	12
Granby.....	24	Tallin	30
Grant.....	58, 68	Trumbull	52
Hammond.....	62	Vega.....	20
Hampshire.....	48		



SAVOY
HOUSE



SAVOY
HOUSE



SAVOY
HOUSE

CONTENTS



Collections 2



Mini Chandeliers 56



Pour Le Bain / Bath 60



Wall Lighting 72



Garden Chandeliers 76



Outdoor 78

Index / Finish Guide 84

CITRINE



A.



CITRINE



A. 9-9202-2-11
 LED 2-Light Sconce
 Polished Chrome Finish
 7-1/2"W x 11"H x 5"E
 2-5W LED Dimmable - 350 Lumens
 3000 K (per bulb)
 Clear Crystal
Bulbs Included

B. 7-9203-2-11
 LED 2-Light Pendant
 Polished Chrome Finish
 7"W x 42-1/2"H
 5W LED Dimmable - 350 Lumens
 3000 K (per bulb)
 90° Swivel
 Clear Crystal
Bulbs Included

C. 7-9200-5-11
 LED 5-Light Pendant
 Polished Chrome Finish
 24-3/4"W x 6"H
 Adj H 6"-63"
 5-5W LED Dimmable - 350 Lumens
 3000 K (per bulb)
 30° Swivel
 Clear Crystal
Bulbs Included

D. 1-9201-6-11
 LED 6-Light Oval Chandelier
 Polished Chrome Finish
 35"L x 19"W x 6"H
 Adj H 6"-63"
 6-5W LED Dimmable - 350 Lumens
 3000 K (per bulb)
 30° Swivel
 Clear Crystal
Bulbs Included

Options: 7-EXT-11 Extension Rod - 9-1/2"

BANGLE



A.

A. 9-4704-1-11
 1-Light Sconce
 Polished Chrome Finish
 6"W x 9"H x 5-3/4"E
 1C 60W
 Clear Crystal
 Metal Candle Cover

B. 7-4703-1-11
 1-Light Mini-Pendant
 Polished Chrome Finish
 7"W x 40"H
 1E 100W
 90° Swivel
 Clear Crystal

C. 7-4701-4-11
 4-Light Pendant
 Polished Chrome Finish
 16-1/4"W x 24-1/2"H
 4C 60W
 Clear Crystal
 Metal Candle Covers

D. 7-4702-6-11
 6-Light Pendant
 Polished Chrome Finish
 23"W x 24-1/2"H
 6C 60W
 Clear Crystal
 Metal Candle Covers

E. 1-4700-5-11
 5-Light Trestle
 Polished Chrome Finish
 39-1/2"L x 11"W x 9"H
 Adj H 9"-66"
 5C 60W
 30° Swivel
 Clear Crystal
 Metal Candle Covers

BANGLE



*B.



C.



D.



**E.



*Options: 7-EXT-11 Extension Rod - 9-1/2"

**Options: 7-EXTLG-11 Extension Rod - 12"

Bath, Page 65

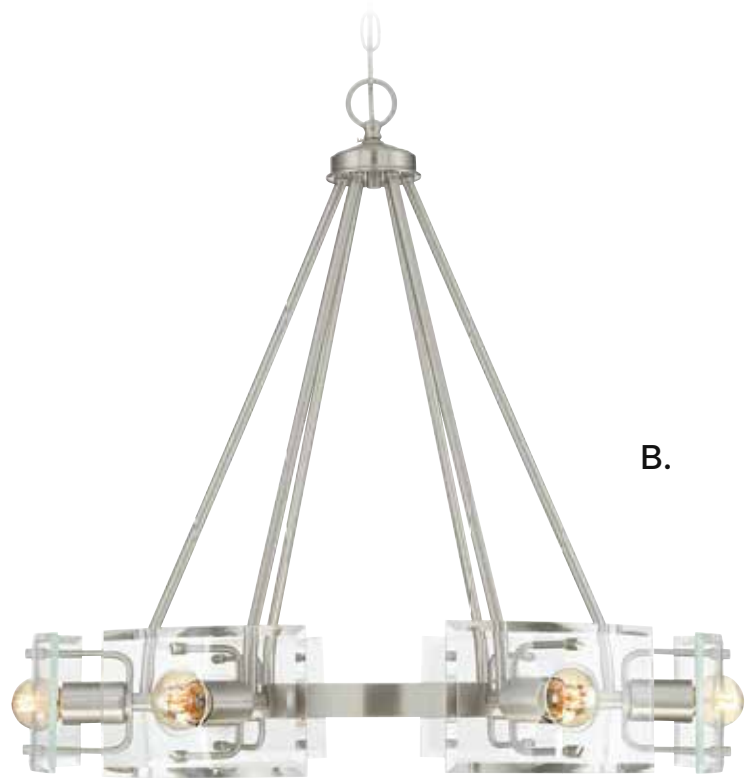
CARDELLA



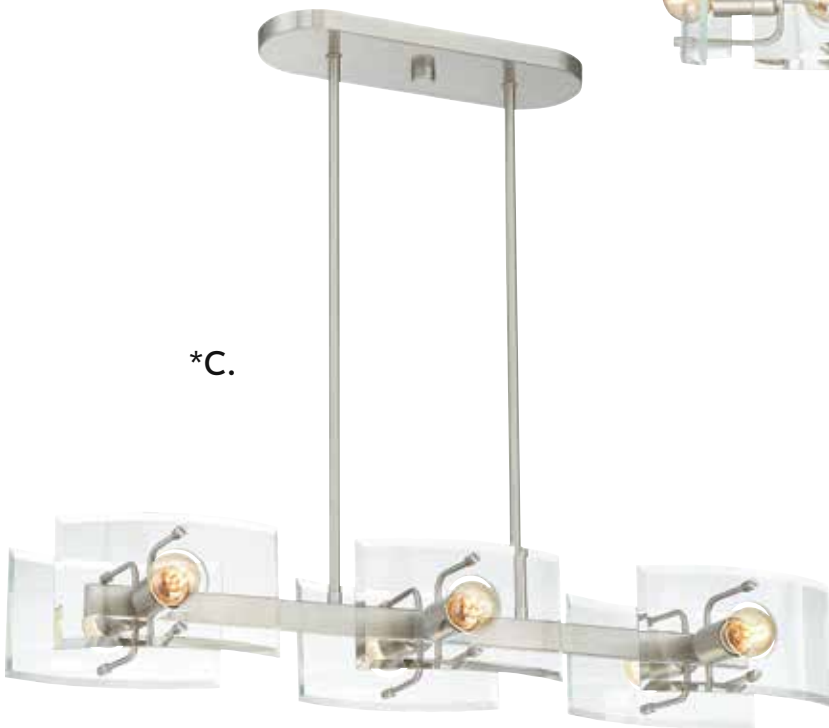
CARDELLA



A.



B.



*C.

- A. **1-9500-5-SN**
5-Light Chandelier
Satin Nickel Finish
23"W x 24"H
5E 60W
Clear Curved Beveled Glass Panel
- B. **1-9501-6-SN**
6-Light Chandelier
Satin Nickel Finish
26"W x 27"H
6E 60W
Clear Curved Beveled Glass Panel
- C. **1-9503-6-SN**
6-Light Trestle
Satin Nickel Finish
32"L x 9-3/4"W x 5"H
Adj H 5"-72"
6E 100W
30° Swivel
Clear Curved Beveled Glass Panel



*Options: 7-EXTLG-SN Extension Rod - 12"

HASTING



A.

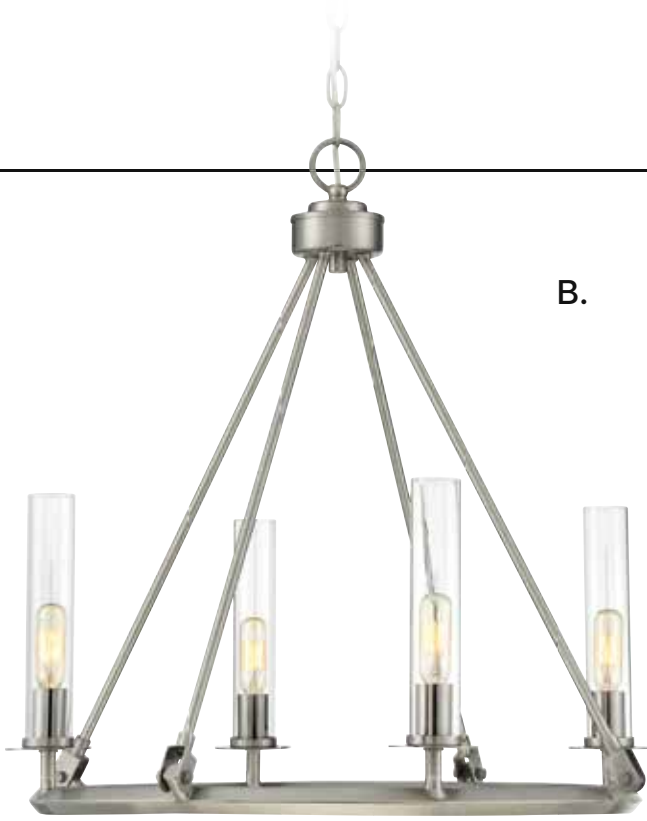
A. 9-9253-1-187
 1-Light Sconce
 Brushed Pewter Finish
 5"W x 10"H x 4-1/2"E
 1C 60W
 Clear Glass
 Metal Candle Cover

B. 1-9250-4-187
 4-Light Chandelier
 Brushed Pewter Finish
 22"W x 23"H
 4C 60W
 30° Swivel
 Clear Glass
 Metal Candle Covers

C. 1-9251-5-187
 5-Light Chandelier
 Brushed Pewter Finish
 25"W x 26"H
 5C 60W
 30° Swivel
 Clear Glass
 Metal Candle Covers

D. 1-9252-5-187
 5-Light Trestle
 Brushed Pewter Finish
 36-1/2"L x 5"W x 22"H
 Adj H 22"-79"
 5C 60W
 30° Swivel
 Clear Glass
 Metal Candle Covers

HASTING



*Options: 7-EXT-187 Extension Rod - 9-1/2"

ST. CLARE



A. 7-9280-1-109

1-Light Mini-Pendant
Polished Nickel Finish
6"W x 42-1/2"H
1E 100W
90° Swivel
Clear Cut Glass

B. 7-9281-1-109

1-Light Mini-Pendant
Polished Nickel Finish
7"W x 45"H
1E 100W
90° Swivel
Clear Cut Glass

C. 7-9282-1-109

1-Light Mini-Pendant
Polished Nickel Finish
8"W x 47"H
1E 100W
90° Swivel
Clear Cut Glass

D. 1-9283-3-109

3-Light Multi-Point Pendant
Polished Nickel Finish
16"W x 17"H
Adj H 17"-137"
3E 100W
Clear Cut Glass

E. 1-9284-6-109

6-Light Multi-Point Pendant
Polished Nickel Finish
22"W x 17"H
Adj H 17"-137"
6E 100W
Clear Cut Glass

ST. CLARE



*A.



*B.



*C.



D.



E.

*Options: 7-EXT-109 Extension Rod - 9-1/2"



ALLMAN



A.

A. 9-9400-1-11
 1-Light Sconce
 Polished Chrome Finish
 6-1/2"W x 8-3/4"H x 8-3/4"E
 1E 100W
 Clear Glass

B. 7-9401-1-11
 1-Light Mini-Pendant
 Polished Chrome Finish
 8"W x 39-1/2"H
 1E 100W
 Clear Glass

C. 7-9402-1-11
 1-Light Pendant
 Polished Chrome Finish
 12"W x 42-1/2"H
 1E 100W
 90° Swivel
 Clear Glass

D. 1-9403-3-11
 3-Light Chandelier
 Polished Chrome Finish
 20"W x 20"H
 3E 60W
 Clear Glass

E. 1-9404-5-11
 5-Light Chandelier
 Polished Chrome Finish
 24-3/4"W x 22"H
 5E 60W
 Clear Glass



Bath, Page 66

Options: 7-EXT-11 Extension Rod - 9-1/2"

ROTTERDAM



A. 7-1661-6-322

6-Light Pendant
Warm Brass Finish
20"L x 20"W x 25-1/2"H
Adj H 25-1/2"-82-1/2"
6C 60W
30° Swivel
Optic Acrylic
Metal Candle Covers

B. 7-1660-6-322

6-Light Pendant
Warm Brass Finish
31-1/2"L x 24-3/4"W x 20-1/2"H
Adj H 20-1/2"-77-1/2"
6C 60W
30° Swivel
Optic Acrylic
Metal Candle Covers

C. 7-1660-6-109

6-Light Pendant
Polished Nickel Finish
31-1/2"L x 24-3/4"W x 20-1/2"H
Adj H 20-1/2"-77-1/2"
6C 60W
30° Swivel
Optic Acrylic
Metal Candle Covers

D. 7-1661-6-109

6-Light Pendant
Polished Nickel Finish
20"L x 20"W x 25-1/2"H
Adj H 25-1/2"-82-1/2"
6C 60W
30° Swivel
Optic Acrylic
Metal Candle Covers

ROTTERDAM



BRIAN THOMAS
COLLECTION

A.



C.



B.



D.



Options: 7-EXTLG- Extension Rod - 12"



EPSILON



A. 7-9161-4-109
4-Light Pendant
Polished Nickel Finish
20"W x 30"H
4C 60W
Clear Acrylic
Metal Candle Covers

B. 7-9160-1-109
1-Light Pendant
Polished Nickel Finish
12"W x 44-1/2"H
1E 100W
90° Swivel
Clear Acrylic

C. 7-9160-1-322
1-Light Pendant
Warm Brass Finish
12"W x 44-1/2"H
1E 100W
90° Swivel
Clear Acrylic

D. 7-9161-4-322
4-Light Pendant
Warm Brass Finish
20"W x 30"H
4C 60W
Clear Acrylic
Metal Candle Covers

EPSILON

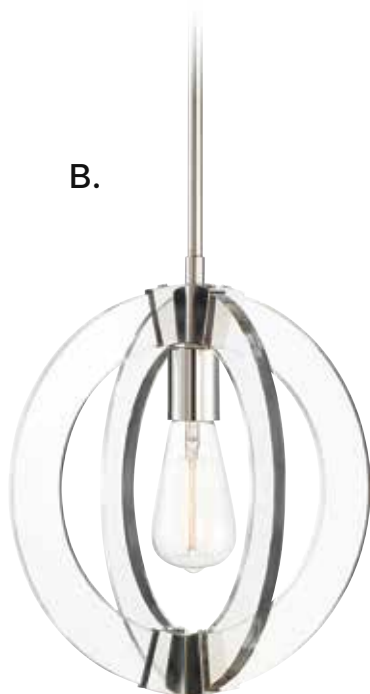
A.



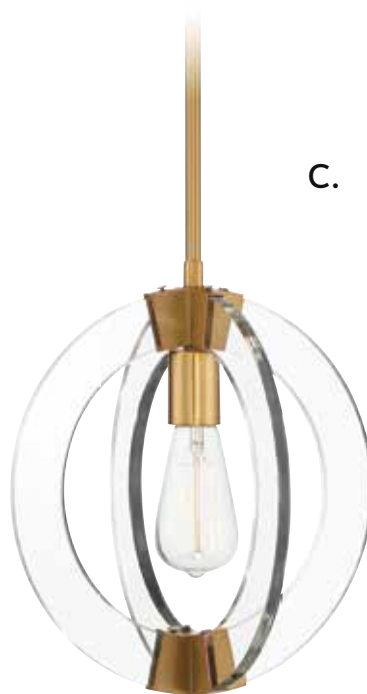
D.



B.

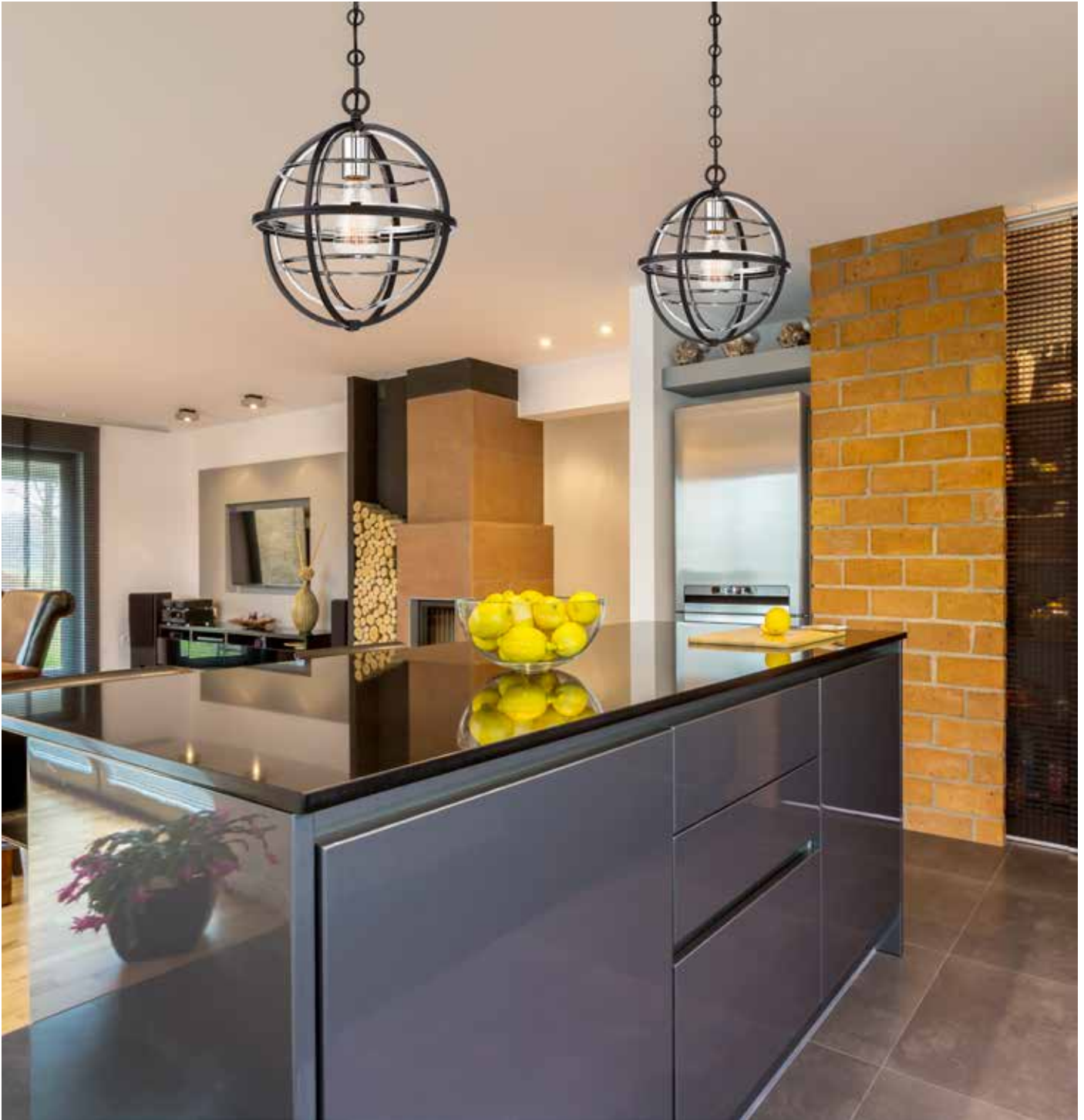


C.



Options: 7-EXT- Extension Rod - 9-1/2"

VEGA



VEGA



A.



B.

A. 7-9179-3-67
3-Light Pendant
Black w/ Chrome Finish
18"W x 20-1/2"H
3C 60W
Metal Candle Covers

B. 7-9178-1-67
1-Light Pendant
Black w/ Chrome Finish
11"W x 13"H
1E 100W

CHENNAL



A.

CHENNAL

B.



C.



D.



BRIAN THOMAS
COLLECTION

A. 9-9220-2-107

2-Light Sconce
Bronze & Chrome w/
Antique Mirror Accents Finish
8"W x 12"H x 5"E
2C 60W
Metal Candle Covers

B. 3-9222-8-107

8-Light Foyer
Bronze & Chrome w/
Antique Mirror Accents Finish
19"W x 23"H
Adj 23"-80"
8C 60W
30° Swivel
Metal Candle Covers

C. 6-9221-4-107

4-Light Convertible
Semi-Flush/Pendant
Bronze & Chrome w/
Antique Mirror Accents Finish
16-1/2"W x 8"H
Adj 8"-65"
4C 60W
30° Swivel
Metal Candle Covers

D. 7-9223-5-107

5-Light Pendant
Bronze & Chrome w/
Antique Mirror Accents Finish
24"W x 10"H
Adj 10"-67"
5C 60W
30° Swivel
Metal Candle Covers

Options: 7-EXTLG-11 Extension Rod - 12"



GRANBY



GRANBY



A.



B.



C.

- A. **7-9291-5-13**
5-Light Pendant
English Bronze Finish
20"W x 30"H
5C 60W
Clear Leaf Glass
- B. **7-9290-4-13**
4-Light Pendant
English Bronze Finish
18"W x 26"H
4C 60W
Clear Leaf Glass
- C. **7-9292-7-13**
7-Light Pendant
English Bronze Finish
26"W x 34"H
7C 60W
Clear Leaf Glass

PUTNAM



PUTNAM



A.



~ Convertible
Semi-Flush/Pendant

- A. **7-9302-4-13**
4-Light Convertible
Semi-Flush/Pendant
English Bronze Finish
17-3/4"L x 17-3/4"W x 27-1/2"H
4C 60W
Bronze Smoked Beveled Glass
Metal Candle Covers

- B. **1-9301-4-13**
4-Light Multi-Point
English Bronze Finish
13"L x 13"W x 10"H
Adj H 10"-130"
4E 100W
Bronze Smoked Beveled Glass



B.

PUTNAM

A.



B.



C.





A. 3-9300-8-13
 8-Light Foyer
 English Bronze Finish
 13-1/2"L x 13-1/2"W x 23"H
 Adj H 23"-80"
 8C 60W
 30° Swivel
 Bronze Smoked Beveled Glass
 Metal Candle Covers

B. 9-9304-1-13
 1-Light Sconce
 English Bronze Finish
 5"W x 11"H x 6-3/4"E
 1E 100W
 Bronze Smoked Beveled Glass

C. 1-9303-5-13
 5-Light Trestle
 English Bronze Finish
 40"L x 5"W x 11"H
 Adj H 11"-68"
 5E 100W
 30° Swivel
 Bronze Smoked Beveled Glass

Options: 7-EXT-13 Extension Rod - 9-1/2"

TALLIN



TALLIN



A.



B.

A. 1-9230-6-13
6-Light Chandelier
English Bronze Finish
20"W x 19"H
Adj H 19"-76"
6E 60W
30° Swivel
Smoked Bronze Water/Piastra Glass

B. 1-9232-8-13
8-Light Chandelier
English Bronze Finish
26"W x 20-1/2"H
Adj H 20-1/2"-77-1/2"
8E 60W
30° Swivel
Smoked Bronze Water/Piastra Glass

Options: 7-EXTLG-13 Extension Rod - 12"

TALLIN



A.

TALLIN

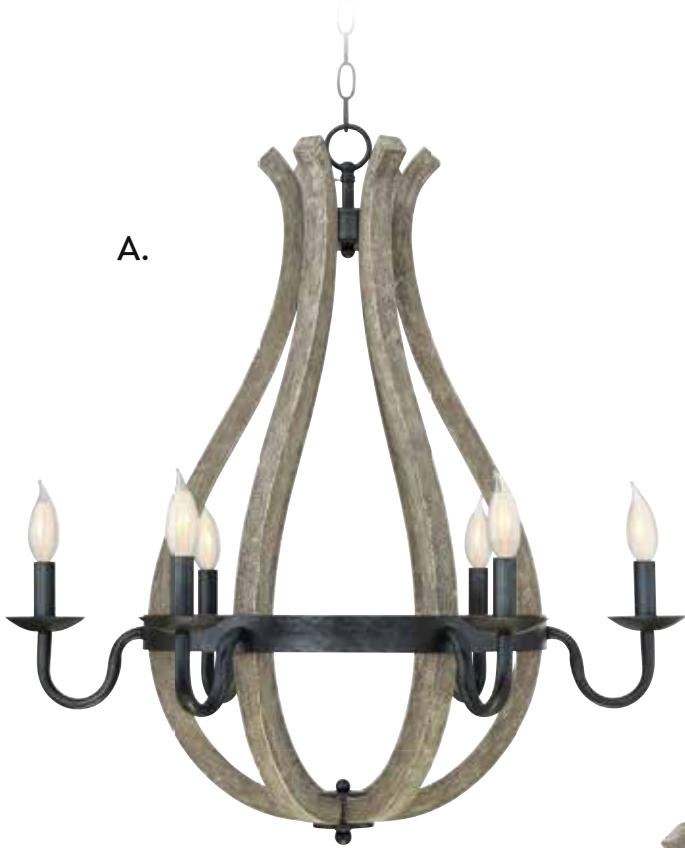


- A. **9-9233-2-13**
2-Light Sconce
English Bronze Finish
5-1/4"W x 13"H x 7"E
2E 100W
Smoked Bronze Water/Piastra Glass
- B. **1-9231-6-13**
6-Light Trestle
English Bronze Finish
30"L x 5-1/2"W x 18"H
Adj H 18"-75"
6E 100W
30° Swivel
Smoked Bronze Water/Piastra Glass

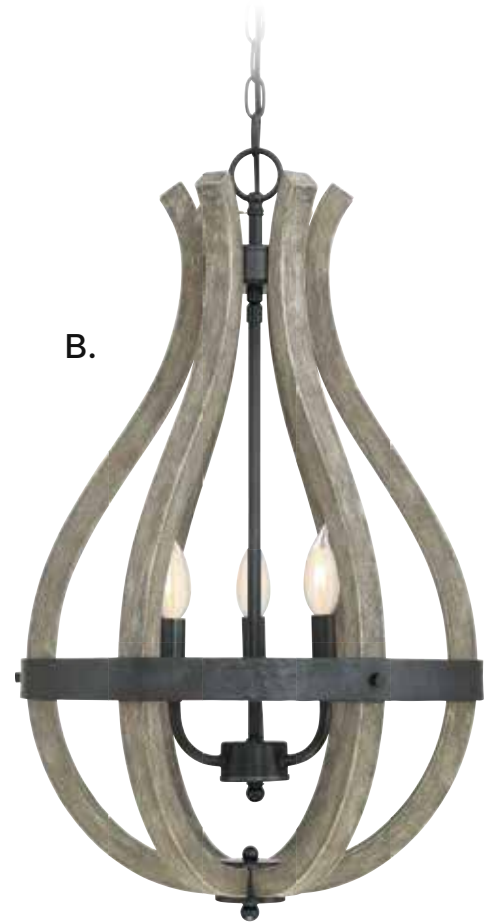


Options: 7-EXTLG-13 Extension Rod - 12"

CARROLTON



A.



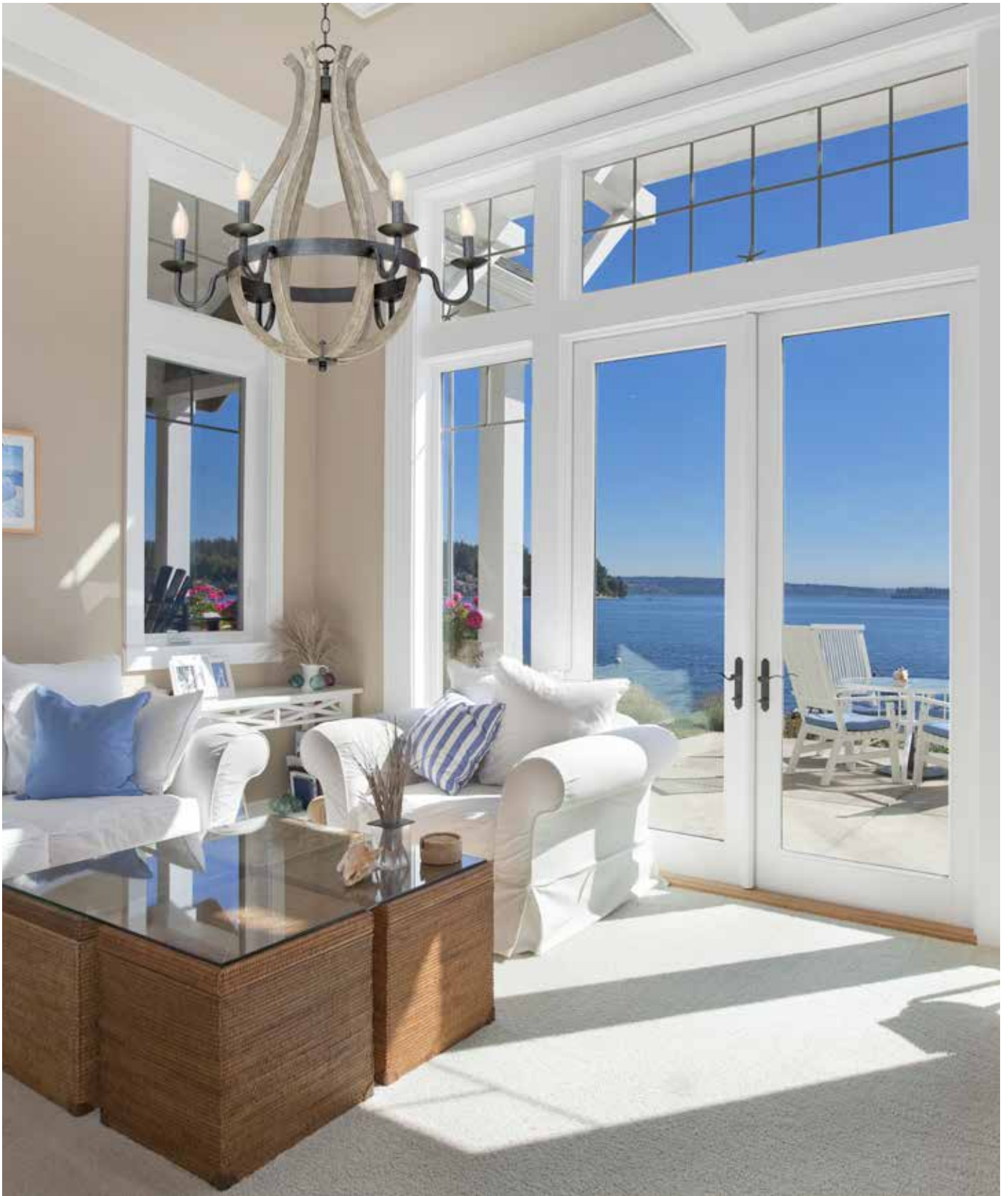
B.



C.

- A. **1-9260-6-112**
6-Light Chandelier
Weathered Birch Finish
27"W x 29"H
6C 60W
Metal Candle Covers
- B. **7-9262-3-112**
3-Light Pendant
Weathered Birch Finish
16"W x 27"H
3C 60W
Metal Candle Covers
- C. **1-9261-8-112**
8-Light Chandelier
Weathered Birch Finish
28"W x 32"H
8C 60W
Metal Candle Covers

CARROLTON

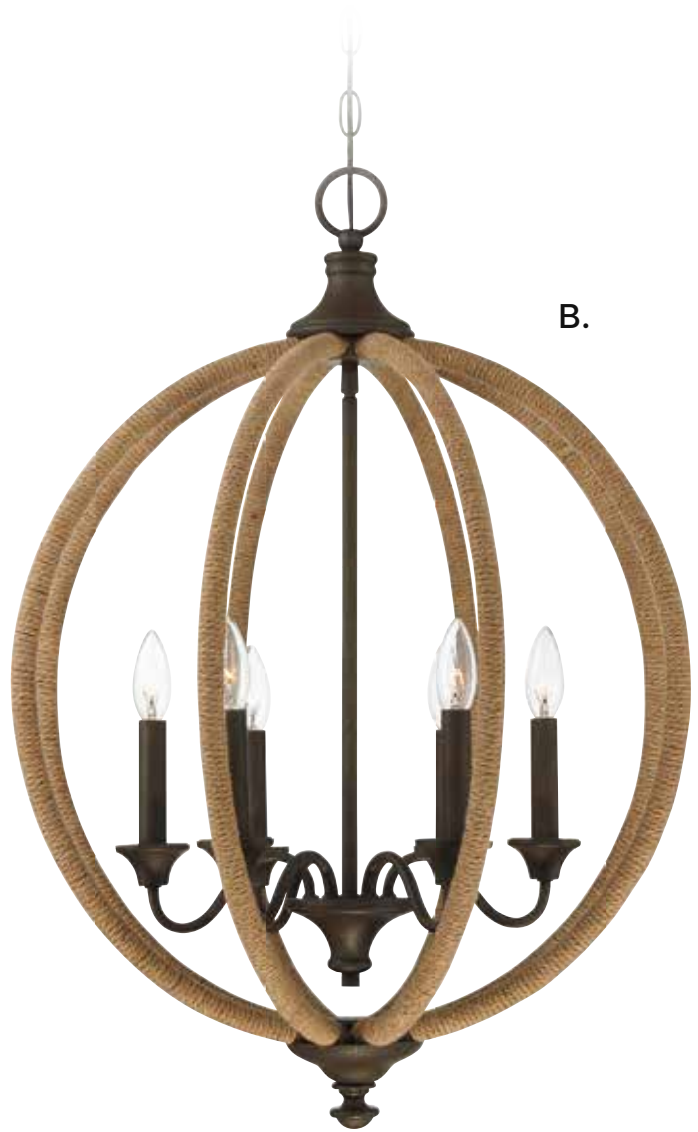


FINDLAY





A.



B.

A. **7-9215-4-32**
4-Light Pendant
Artisan Rust Finish
17"W x 24"H
4C 60W
Metal Candle Covers

B. **7-9216-6-32**
6-Light Pendant
Artisan Rust Finish
22"W x 30"H
6C 60W
Metal Candle Covers

SANTIAGO



SANTIAGO



*A.



**B.



**C.

- A. **7-4100-3-133**
3-Light Pendant
Sapele Finish
15"W x 14"H
Adj H 14"-71"
3E 100W
30° Swivel
- B. **7-4102-5-133**
5-Light Pendant
Sapele Finish
18"W x 17"H
Adj H 17"-74"
5E 100W
30° Swivel
- C. **1-4101-4-133**
4-Light Oval Chandelier
Sapele Finish
34-5/8"L x 11-1/2"W x 10-1/4"H
Adj H 10*1/4"-67-1/4"
4E 100W
30° Swivel



Bath, Page 70

*Options: 7-EXT-51 Extension Rod - 9-1/2"

**Options: 7-EXTLG-51 Extension Rod - 12"



AMADOR



A. 9-9180-2-101
2-Light Sconce
Noblewood w/ Iron Finish
8"W x 14"H x 5"E
2C 60W
Metal Candle Covers

B. 3-9182-4-101
4-Light Foyer
Noblewood w/ Iron Finish
16"L x 16"W x 20"H
Adj H 20"-77"
4C 60W
30° Swivel
Metal Candle Covers

C. 6-9181-4-101
4-Light Convertible
Semi-Flush/Pendant
Noblewood w/ Iron Finish
14"L x 14"W x 7"H
Adj H 7"-64"
4C 60W
30° Swivel

AMADOR

A.



B.



C.



Options: 7-EXTLG-101 Extension Rod - 12"

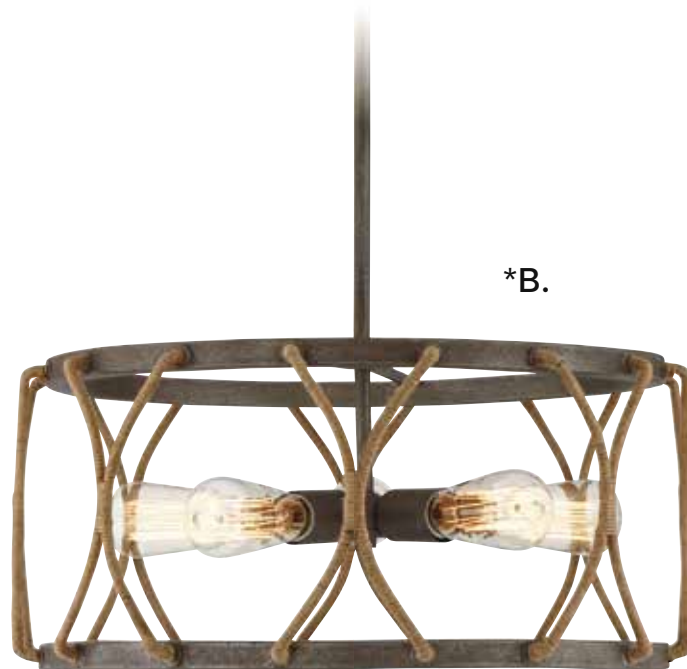
KEATING



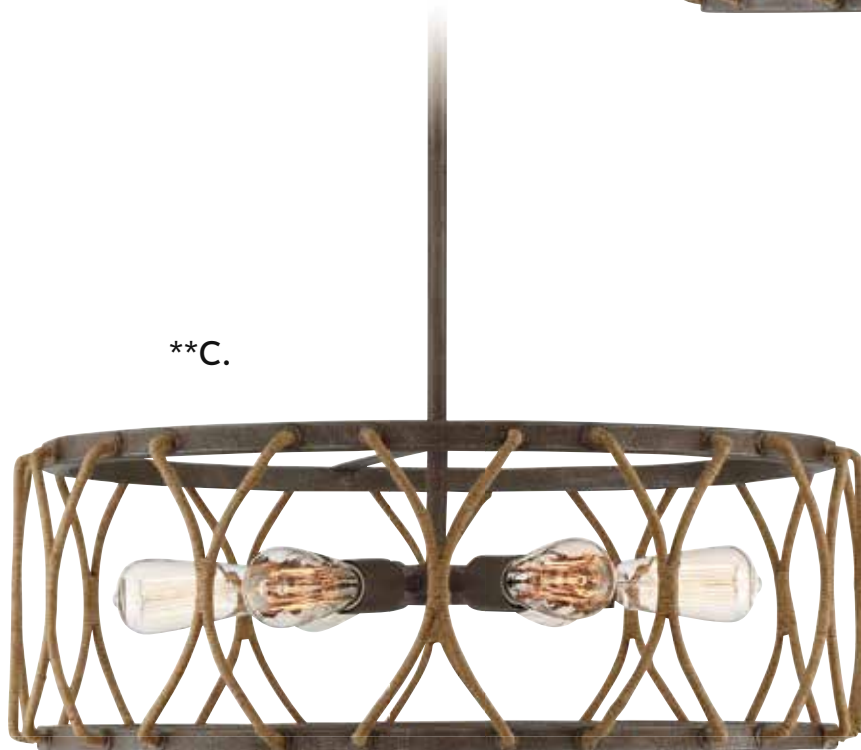
KEATING



A.



*B.



**C.

- A. **9-5303-2-32**
2-Light Sconce
Artisan Rust Finish
9"W x 14"H x 6"E
2C 60W
Metal Candle Covers
- B. **7-5300-5-32**
5-Light Pendant
Artisan Rust Finish
19-1/2"W x 9"H
Adj H 9"-66"
5E 100W
30° Swivel
- C. **7-5301-6-32**
6-Light Pendant
Artisan Rust Finish
25"W x 9"H
Adj H 9"-66"
6E 100W
30° Swivel



Bath, Page 71

*Options: 7-EXT-32 Extension Rod - 9-1/2"

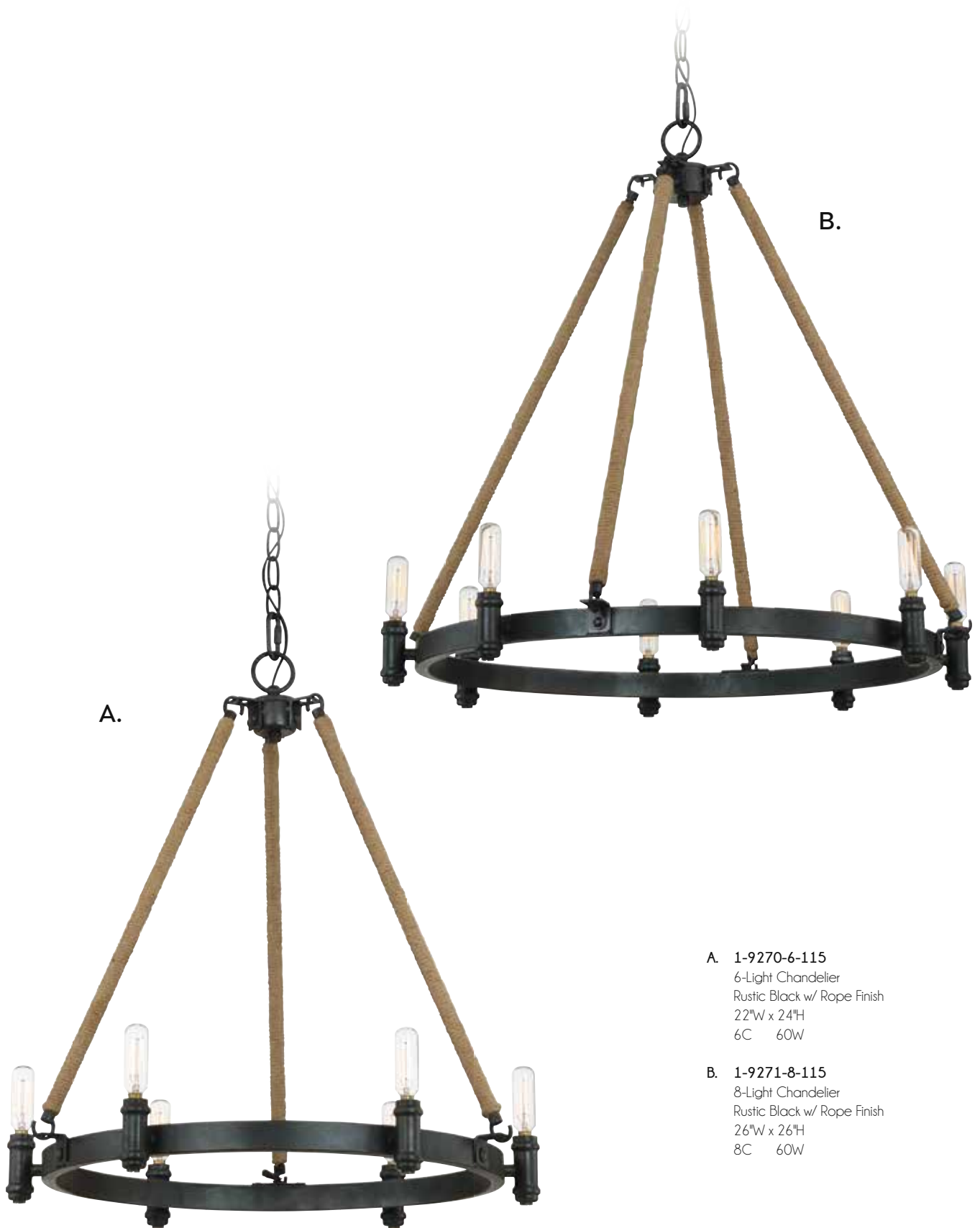
**Options: 7-EXTLG-32 Extension Rod - 12"



PICCARDY



PICCARDY



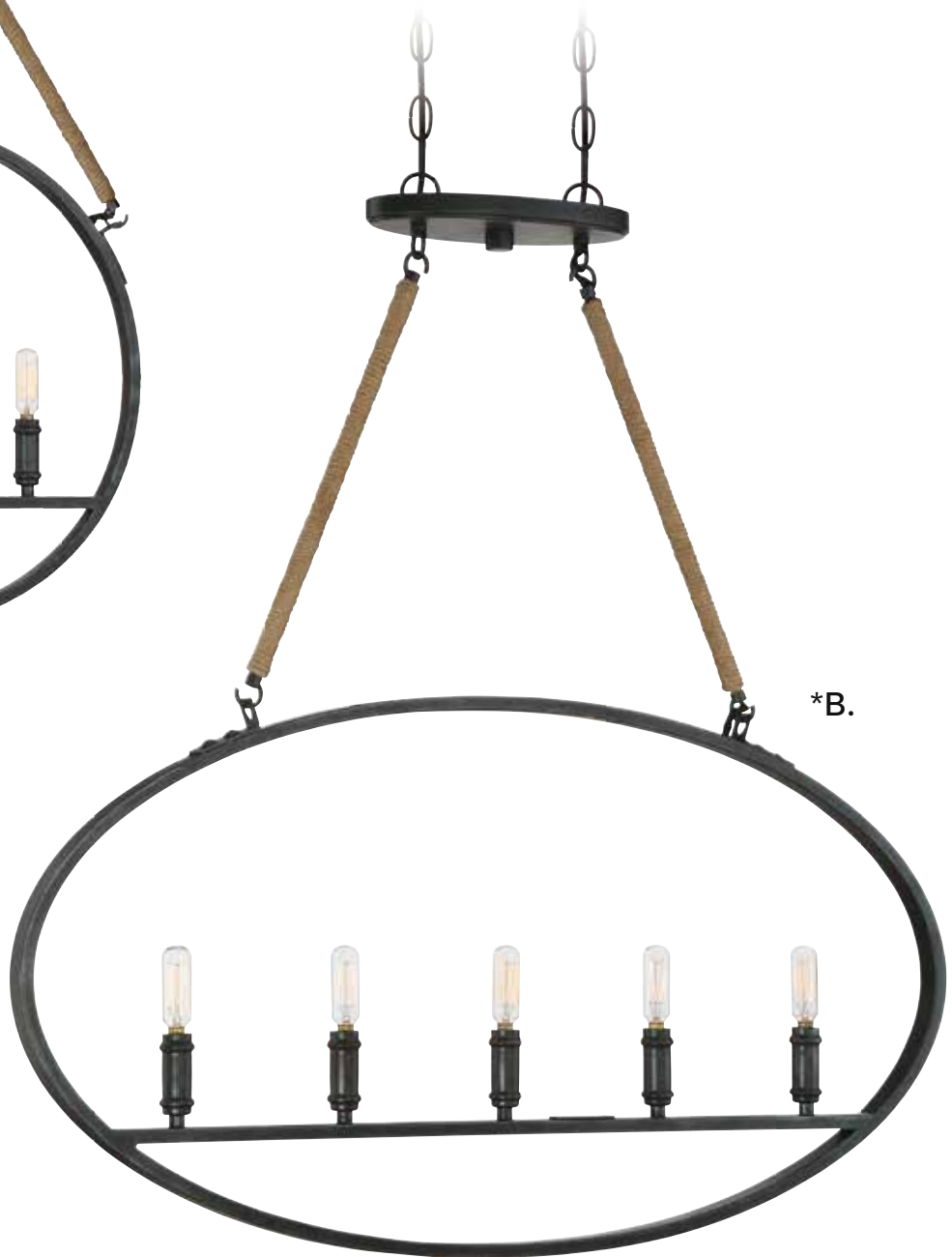
A. 1-9270-6-115
6-Light Chandelier
Rustic Black w/ Rope Finish
22"W x 24"H
6C 60W

B. 1-9271-8-115
8-Light Chandelier
Rustic Black w/ Rope Finish
26"W x 26"H
8C 60W

PICCARDY



A. 7-9272-3-115
3-Light Pendant
Rustic Black w/ Rope Finish
20"W x 32"H x 1-1/4"E
3C 60W



B. 1-9273-5-115
5-Light Trestle
Rustic Black w/ Rope Finish
36"W x 37"H x 1-1/4"E
5C 60W

*Fixture may be mounted as either **Chain Hung** or **Ceiling Mount**.



HAMPSHIRE



HAMPSHIRE



A.

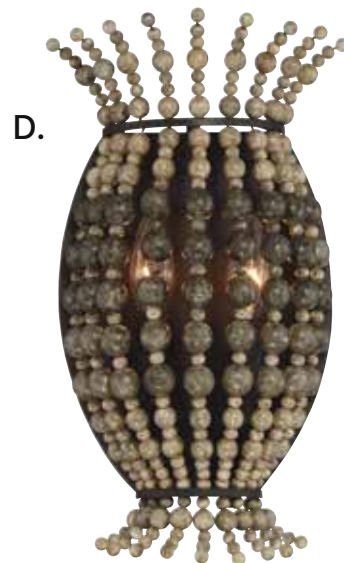
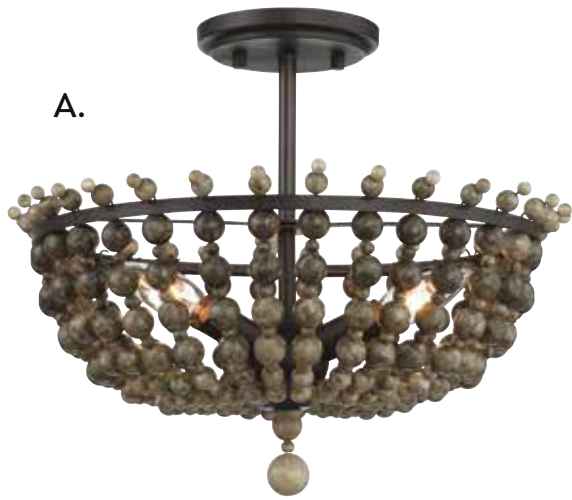


B.

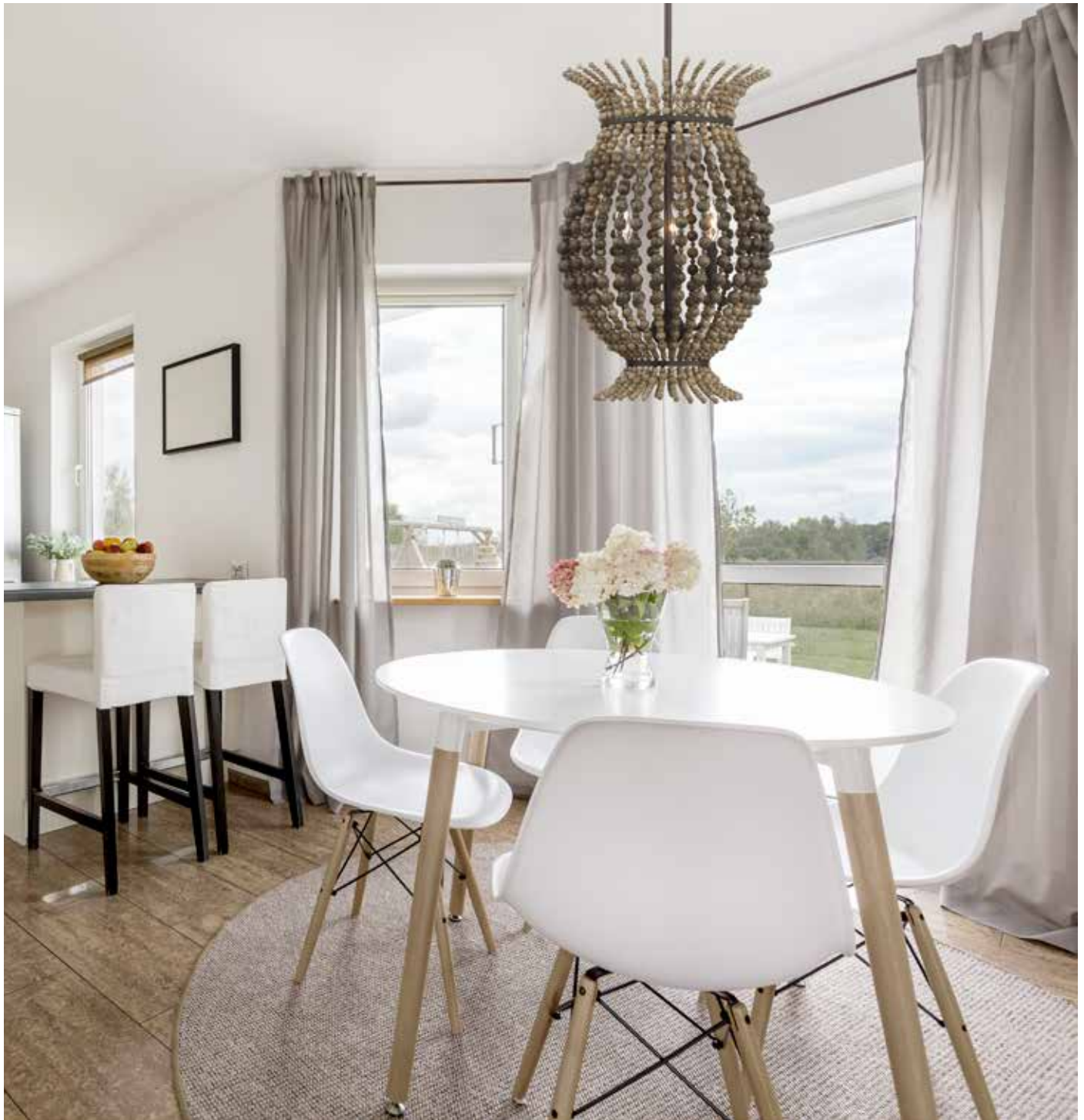
A. 1-9701-6-13
6-Light Chandelier
English Bronze Finish
26"W x 33-1/2"H
6C 60W
Soft White Beeswax Candle Covers

B. 1-9700-8-13
8-Light Chandelier
English Bronze Finish
34"W x 39"H
8C 60W
Soft White Beeswax Candle Covers

MADISON



MADISON



A. 6-9193-3-13
3-Light Semi-Flush
English Bronze Finish
15-1/2"W x 13"H
3C 60W
Wooden Beads

B. 7-9191-3-13
3-Light Pendant
English Bronze Finish
15"W x 22-1/2"H
Adj 22-1/2"-75-1/2"
3C 60W
30° Swivel
Wooden Beads
Metal Candle Covers

C. 7-9190-1-13
1-Light Pendant
English Bronze Finish
10"W x 44-1/2"H
1E 100W
90° Swivel
Wooden Beads

D. 9-9192-2-13
2-Light Sconce
English Bronze Finish
7-1/2"W x 14"H x 5-1/2"E
2C 60W
Wooden Beads
Metal Candle Covers

Options: 7-EXT-13 Extension Rod - 9-1/2"



TRUMBULL



A.



B.

A. 7-900-3-114
3-Light Pendant
Brittannia Gold Finish
16"W x 20"H
3C 60W
Clear Crystal Drops
Metal Candle Covers

B. 7-901-9-114
9-Light Pendant
Brittannia Gold Finish
26"W x 35"H
9C 60W
Clear Crystal Drops
Metal Candle Covers

TRUMBULL



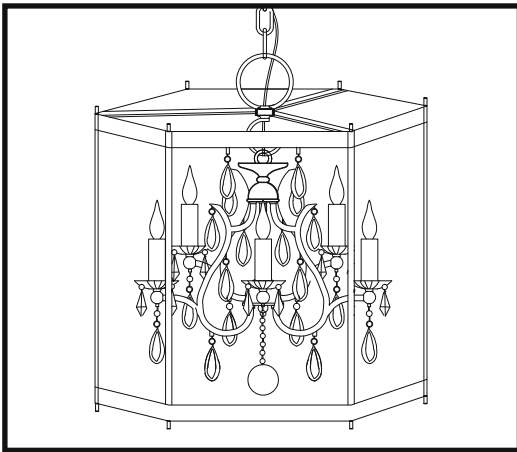
ENDICOTT



A. 1-9900-3-110
3-Light Chandelier
Shadow Smoke Finish
21"W x 20-1/2"H
3C 60W
Smoked Plated Glass
Clear Crystal
Metal Candle Covers

B. 1-9901-6-110
6-Light Chandelier
Shadow Smoke Finish
26"W x 24-1/2"H
6C 60W
Smoked Plated Glass
Clear Crystal
Metal Candle Covers

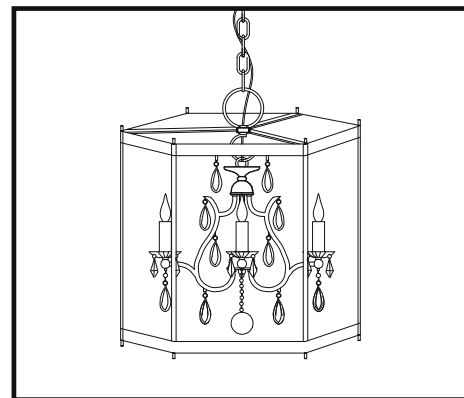
ENDICOTT



B.



A.



MINI-CHANDELIERS

A.



MINI-CHANDELIERS



B.

- A. 1-1047-3-48**
3-Light Mini-Chandelier
Statuary Bronze Finish
10"W x 16-1/2"H
3C 60W
Smoked Crystal
Metal Candle Covers
- B. 1-1048-3-176**
3-Light Mini-Chandelier
Silver Lace Finish
12-3/8"W x 15-1/2"H
3C 60W
Clear Crystal

GRANT

A.



*B.



C.



- A. 6-2101-1-13
1-Light Semi-Flush
English Bronze Finish
11-1/2"W x 13-1/4"H
1E 60W
Clear Glass
- B. 7-2100-1-13
1-Light Pendant
English Bronze Finish
11-1/2"W x 43-1/2"H
1E 100W
90° Swivel
Clear Glass
- C. 9-2102-1-13
1-Light Sconce
English Bronze Finish
7-1/4"W x 11"H x 8"E
1E 100W
Clear Glass



Bath, Page 68

GRANT



*D.



E.

D. 7-2100-1-SN
1-Light Pendant
Satin Nickel Finish
11-1/2"W x 43-1/2"H
1E 100W
90° Swivel
Clear Glass

E. 6-2101-1-SN
1-Light Semi-Flush
Satin Nickel Finish
11-1/2"W x 13-1/4"H
1E 60W
Clear Glass

F. 9-2102-1-SN
1-Light Sconce
Satin Nickel Finish
7-1/4"W x 11"H x 8"E
1E 100W
Clear Glass



F.



Bath, Page 68

*Options: 7-EXT- Extension Rod - 9-1/2"

LANSING



LANSING

A.



B.



C.



D.

A. **8-1780-3-111**
3-Light Bath Bar
Satin Nickel w/ Polished Nickel
Accents Finish
24"W x 10"H x 7"E
3E 100W
Clear Glass

B. **8-1780-2-111**
2-Light Bath Bar
Satin Nickel w/ Polished Nickel
Accents Finish
13-1/2"W x 10"H x 7"E
2E 100W
Clear Glass

C. **8-1780-2-79**
2-Light Bath Bar
English Bronze w/ Warm Brass Finish
13-1/2"W x 10"H x 7"E
2E 100W
Clear Glass

D. **8-1780-3-79**
3-Light Bath Bar
English Bronze w/ Warm Brass Finish
24"W x 10"H x 7"E
3E 100W
Clear Glass

HAMMOND



A.



B.



C.



D.

- A. **8-9240-4-109**
4-Light Bath Bar
Polished Nickel Finish
32"W x 8"H x 6-1/2"E
4E 100W
White Opal Glass
- B. **8-9240-3-109**
3-Light Bath Bar
Polished Nickel Finish
24"W x 8"H x 6-1/2"E
3E 100W
White Opal Glass
- C. **8-9240-2-109**
2-Light Bath Bar
Polished Nickel Finish
16"W x 8"H x 6-1/2"E
2E 100W
White Opal Glass
- D. **9-9240-1-109**
1-Light Sconce
Polished Nickel Finish
4-1/2"W x 8"H x 6-1/2"E
1E 100W
White Opal Glass



Fixtures may be mounted as either **Uplight** or **Downlight**.

SALVADOR



E.



F.



G.



H.

- E. **9-1075-1-11**
1-Light Sconce
Polished Chrome Finish
5-1/2"W x 11-1/4"H x
6-1/2"E
1E 100W
- F. **8-1075-2-11**
2-Light Bath Bar
Polished Chrome Finish
15-1/2"W x 11-1/4"H x
6-1/2"E
2E 100W
- G. **8-1075-3-11**
3-Light Bath Bar
Polished Chrome Finish
24"W x 11-1/4"H x
6-1/2"E
3E 100W
- H. **8-1075-4-11**
4-Light Sconce
Polished Chrome Finish
33-1/2"W x 11-1/4"H x
6-1/2"E
4E 100W

Fixtures may be mounted as either **Uplight** or **Downlight**.

CARDELLA



A.



B.



C.



A. **8-9502-4-SN**
4-Light Bath Bar
Satin Nickel Finish
41"W x 5"H x 6-1/2"E
4E 100W
Clear Curved Beveled Glass

B. **8-9502-3-SN**
3-Light Bath Bar
Satin Nickel Finish
30"W x 5"H x 6-1/2"E
3E 100W
Clear Curved Beveled Glass

C. **8-9502-2-SN**
2-Light Bath Bar
Satin Nickel Finish
20"W x 5"H x 6-1/2"E
2E 100W
Clear Curved Beveled Glass

BANGLE



D.



E.



F.

D. **8-4705-5-11**
5-Light Bath Bar
Polished Chrome Finish
25"W x 6-1/4"H x 5-3/4"E
5C 60W
Clear Crystal
Metal Candle Covers

E. **8-4705-3-11**
3-Light Bath Bar
Polished Chrome Finish
15-1/2"W x 6-1/4"H x 5-3/4"E
3C 60W
Clear Crystal
Metal Candle Covers

F. **9-4704-1-11**
1-Light Sconce
Polished Chrome Finish
6"W x 9"H x 5-3/4"E
1C 60W
Clear Crystal
Metal Candle Covers

Fixtures may be mounted as **Uplight** only.



ALLMAN



A. 9-9400-1-11
1-Light Sconce
Polished Chrome Finish
6-1/2"W x 8-3/4"H x 8-3/4"E
1E 100W
Clear Glass

B. 8-9400-2-11
2-Light Bath Bar
Polished Chrome Finish
17-3/4"W x 8-3/4"H x 9"E
2E 100W
Clear Glass

C. 8-9400-3-11
3-Light Bath Bar
Polished Chrome Finish
26-1/4"W x 8-3/4"H x 9"E
3E 100W
Clear Glass

D. 8-9400-4-11
4-Light Bath Bar
Polished Chrome Finish
36"W x 8-3/4"H x 9"E
4E 100W
Clear Glass



A.



B.



C.



D.

GRANT



- A. 9-2102-1-13**
1-Light Sconce
English Bronze Finish
7-1/4"W x 11"H x 8"E
1E 100W
Clear Glass
- B. 8-2102-4-13**
4-Light Bath Bar
English Bronze Finish
38"W x 8-1/2"H x 8"E
4E 100W
Clear Glass
- C. 8-2102-3-13**
3-Light Bath Bar
English Bronze Finish
27"W x 8-1/2"H x 8"E
3E 100W
Clear Glass
- D. 8-2102-2-13**
2-Light Bath Bar
English Bronze Finish
17-3/4"W x 8-1/2"H x 8"E
2E 100W
Clear Glass
- E. 9-2102-1-SN**
1-Light Sconce
Satin Nickel Finish
7-1/4"W x 11"H x 8"E
1E 100W
Clear Glass
- F. 8-2102-4-SN**
4-Light Bath Bar
Satin Nickel Finish
38"W x 8-1/2"H x 8"E
4E 100W
Clear Glass
- G. 8-2102-3-SN**
3-Light Bath Bar
Satin Nickel Finish
27"W x 8-1/2"H x 8"E
3E 100W
Clear Glass
- H. 8-2102-2-SN**
2-Light Bath Bar
Satin Nickel Finish
17-3/4"W x 8-1/2"H x 8"E
2E 100W
Clear Glass

GRANT



A.



B.



C.



D.



E.



F.



G.



H.

Fixtures may be mounted as either **Uplight** or **Downlight**.

SANTIAGO



A.



B.



C.



D.



KEATING



E.



F.



G.

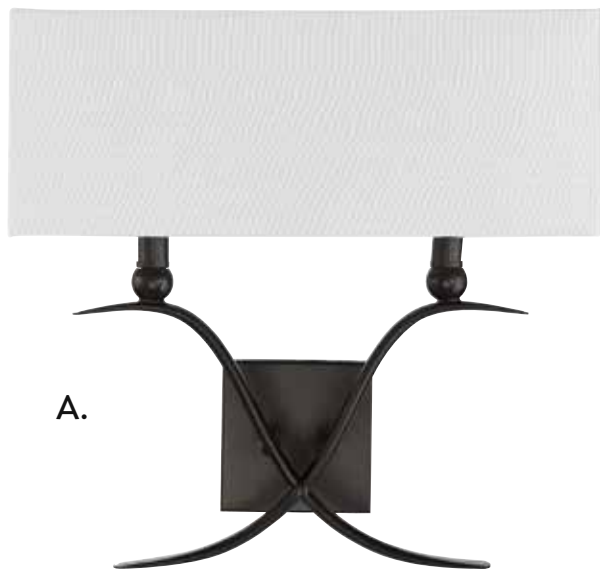


H.

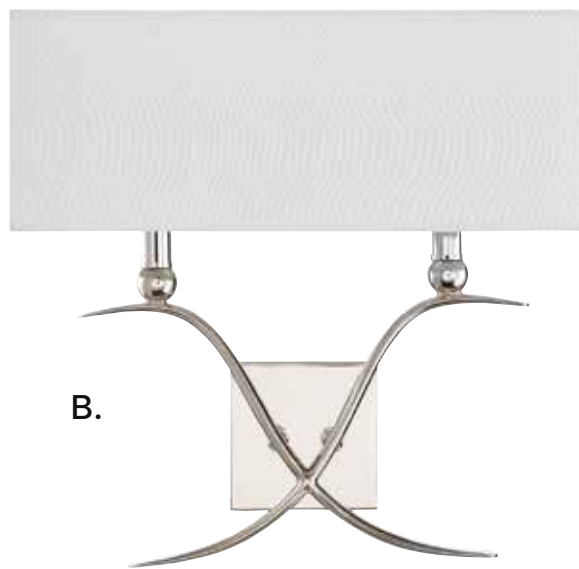


- A. **8-4103-4-133**
4-Light Bath Bar
Sapele Finish
28-1/4"W x 7-7/8"H x 6-3/4"E
4C 60W
Metal Candle Covers
- B. **8-4103-3-133**
3-Light Bath Bar
Sapele Finish
22-5/8"W x 7-7/8"H x 6"E
3C 60W
Metal Candle Covers
- C. **8-4103-2-133**
2-Light Bath Bar
Sapele Finish
16-1/2"W x 7-7/8"H x 6"E
2C 60W
Metal Candle Covers
- D. **9-4104-2-133**
2-Light Sconce
Sapele Finish
9"W x 14"H x 5-1/2"E
2C 60W
Metal Candle Covers
- E. **8-5302-4-32**
4-Light Bath Bar
Artisan Rust Finish
32"W x 7-7/8"H x 7-1/2"E
4C 60W
Metal Candle Covers
- F. **8-5302-3-32**
3-Light Bath Bar
Artisan Rust Finish
24"W x 7-7/8"H x 6-1/2"E
3C 60W
Metal Candle Covers
- G. **8-5302-2-32**
2-Light Bath Bar
Artisan Rust Finish
17"W x 7-7/8"H x 6-1/2"E
2C 60W
Metal Candle Covers
- H. **9-5303-2-32**
2-Light Sconce
Artisan Rust Finish
9"W x 14"H x 6"E
2C 60W
Metal Candle Covers

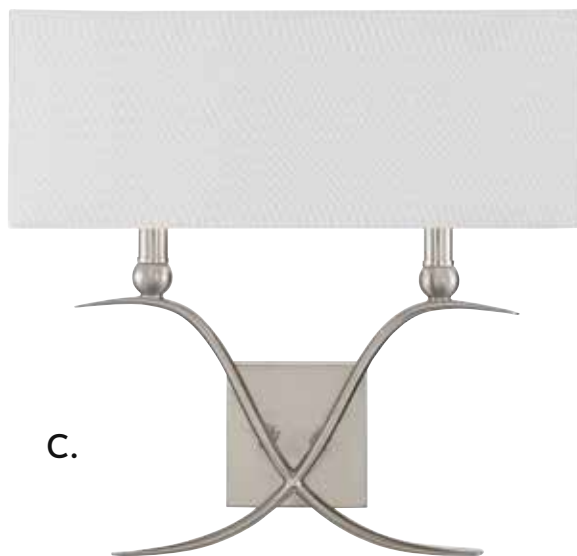
PAYTON



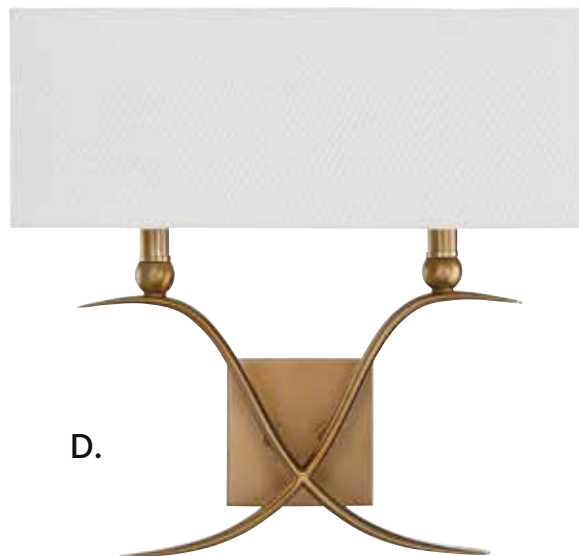
A.



B.



C.



D.

A. 9-800-2-44
2-Light Sconce
Classic Bronze Finish
16"W x 15-1/2"H x 6"E
2C 60W
White Linen Shade

B. 9-800-2-109
2-Light Sconce
Polished Nickel Finish
16"W x 15-1/2"H x 6"E
2C 60W
White Linen Shade

C. 9-800-2-SN
2-Light Sconce
Satin Nickel Finish
16"W x 15-1/2"H x 6"E
2C 60W
White Linen Shade

D. 9-800-2-322
2-Light Sconce
Warm Brass Finish
16"W x 15-1/2"H x 6"E
2C 60W
White Linen Shade

PAYTON



CHAPLIN



A. 9-1000-1-109
1-Light Sconce
Polished Nickel Finish
7"W x 26"H x 8-1/2"E
1C 60W
White Fabric Shade

B. 9-1000-1-13
1-Light Sconce
English Bronze Finish
7"W x 26"H x 8-1/2"E
1C 60W
White Fabric Shade

C. 9-1000-1-322
1-Light Sconce
Warm Brass Finish
7"W x 26"H x 8-1/2"E
1C 60W
White Fabric Shade

D. 9-1000-1-SN
1-Light Sconce
Satin Nickel Finish
7"W x 26"H x 8-1/2"E
1C 60W
White Fabric Shade

CHAPLIN



A.



B.



C.



D.

LAKEWOOD



A.



**DAMP
Location**

A. 9-9174-2-108
2-Light Sconce
Bronze w/ Stainless Steel Finish
10"W x 11-1/2"H x 6"E
2C 60W
Clear Glass
UL Damp Rated

B. 7-9170-5-108
5-Light Pendant
Bronze w/ Stainless Steel Finish
24"L x 24"W x 20"H
Adj H 20"-77"
5C 60W
30° Swivel
Clear Glass
UL Damp Rated

C. 3-9171-4-108
4-Light Foyer
Bronze w/ Stainless Steel Finish
18"L x 18"W x 27-1/2"H
Adj H 27-1/2"-84-1/2"
4C 60W
30° Swivel
Clear Glass
UL Damp Rated

D. 1-9172-4-108
4-Light Trestle
Bronze w/ Stainless Steel Finish
40"L x 12"W x 11-1/2"H
Adj H 11-1/2"-68-1/2"
4C 60W
30° Swivel
Clear Glass
UL Damp Rated

***Options: 7-EXT-** Extension Rod - 9-1/2"

****Options: 7-EXTLG-** Extension Rod - 12"

LAKEWOOD

**B.



**C.



BRIAN THOMAS
COLLECTION

*D.



READING



A. 5-401-13
Wall Lantern
English Bronze Finish
w/ Warm Brass Accent Reflector
8"W x 16"H x 6-3/4"E
1E 100W

B. 5-402-13
Wall Lantern
English Bronze Finish
w/ Warm Brass Accent Reflector
10"W x 20"H x 6-3/4"E
2C 60W
Metal Candle Covers

C. 5-400-13
Wall Lantern
English Bronze Finish
w/ Warm Brass Accent Reflector
6-3/4"W x 13"H x 6"E
1E 100W

READING

A.



B.



C.



PIERCE PAXTON

SHELTON

- A. **5-264-213**
Post Lantern
English Bronze w/ Gold Finish
8"W x 25"H
2C 60W
Clear Seeded Glass
Metal Candle Covers
- B. **5-263-213**
Hanging Lantern
English Bronze w/ Gold Finish
8"W x 22"H
2C 40W
Clear Seeded Glass
Metal Candle Covers
- C. **5-262-213**
Wall Lantern
English Bronze w/ Gold Finish
9-1/4"W x 30"H x 11"E
3C 40W
Clear Seeded Glass
Metal Candle Covers
- D. **5-261-213**
Wall Lantern
English Bronze w/ Gold Finish
8"W x 26"H x 9-1/2"E
2C 40W
Clear Seeded Glass
Metal Candle Covers
- E. **5-260-213**
Wall Lantern
English Bronze w/ Gold Finish
6"W x 19"H x 7"E
1E 100W
Clear Seeded Glass



A.

SHELTON

B.



C.



D.



E.



NORWALK

A. 5-704-113

Post Lantern
Brushed Bronze Finish
8"W x 19"H
1E 100W
Clear Class

B. 5-703-113

Hanging Lantern
Brushed Bronze Finish
8"W x 16-1/2"H
1E 100W
Clear Class

C. 5-701-113

Wall Lantern
Brushed Bronze Finish
6-1/2"W x 15"H x 7-1/2"E
1E 100W
Clear Class

D. 5-702-113

Wall Lantern
Brushed Bronze Finish
8"W x 17-1/2"H x 9"E
1E 100W
Clear Class

E. 5-700-113

Wall Lantern
Brushed Bronze Finish
5"W x 7-1/2"H x 6"E
1E 100W
Clear Class



A.

NORWALK

B.



C.



D.



E.



INDEX

1-1047-3-48.....	57	6-9193-3-13.....	51	8-2102-2-SN.....	68
1-1048-3-176.....	57	6-9221-4-107.....	23	8-2102-3-13.....	68
1-4101-4-133.....	39	7-1660-6-109.....	16	8-2102-3-SN.....	68
1-4700-5-11.....	6	7-1660-6-322.....	16	8-2102-4-13.....	68
1-9172-4-108.....	76	7-1661-6-109.....	16	8-2102-4-SN.....	68
1-9201-6-11.....	5	7-1661-6-322.....	16	8-4103-2-133.....	71
1-9230-6-13.....	31	7-2100-1-13.....	58	8-4103-3-133.....	71
1-9231-6-13.....	33	7-2100-1-SN.....	59	8-4103-4-133.....	71
1-9232-8-13.....	31	7-4100-3-133.....	39	8-4705-3-11.....	65
1-9250-4-187.....	10	7-4102-5-133.....	39	8-4705-5-11.....	65
1-9251-5-187.....	10	7-4701-4-11.....	6	8-5302-2-32.....	71
1-9252-5-187.....	10	7-4702-6-11.....	6	8-5302-3-32.....	71
1-9260-6-112.....	34	7-4703-1-11.....	6	8-5302-4-32.....	71
1-9261-8-112.....	34	7-5300-5-32.....	43	8-9240-2-109.....	62
1-9270-6-115.....	45	7-5301-6-32.....	43	8-9240-3-109.....	62
1-9271-8-115.....	45	7-900-3-114.....	52	8-9240-4-109.....	62
1-9273-5-115.....	46	7-901-9-114.....	52	8-9400-2-11.....	66
1-9283-3-109.....	12	7-9160-1-109.....	18	8-9400-3-11.....	66
1-9284-6-109.....	12	7-9160-1-322.....	18	8-9400-4-11.....	66
1-9301-4-13.....	27	7-9161-4-109.....	18	8-9502-2-SN.....	64
1-9303-5-13.....	29	7-9161-4-322.....	18	8-9502-3-SN.....	64
1-9403-3-11.....	14	7-9170-5-108.....	76	8-9502-4-SN.....	64
1-9404-5-11.....	14	7-9178-1-67.....	21	9-1000-1-109.....	74
1-9500-5-SN.....	9	7-9179-3-67.....	21	9-1000-1-13.....	74
1-9501-6-SN.....	9	7-9190-1-13.....	51	9-1000-1-322.....	74
1-9503-6-SN.....	9	7-9191-3-13.....	51	9-1000-1-SN.....	74
1-9700-8-13.....	49	7-9200-5-11.....	5	9-1075-1-11.....	63
1-9701-6-13.....	49	7-9203-2-11.....	5	9-2102-1-13.....	58, 68
1-9900-3-110.....	54	7-9215-4-32.....	37	9-2102-1-SN.....	59, 68
1-9901-6-110.....	54	7-9216-6-32.....	37	9-4104-2-133.....	71
3-9171-4-108.....	76	7-9223-5-107.....	23	9-4704-1-11.....	6, 65
3-9182-4-101.....	40	7-9262-3-112.....	34	9-5303-2-32.....	43, 71
3-9222-8-107.....	23	7-9272-3-115.....	46	9-800-2-109.....	72
3-9300-8-13.....	29	7-9280-1-109.....	12	9-800-2-322.....	72
5-260-213.....	80	7-9281-1-109.....	12	9-800-2-44.....	72
5-261-213.....	80	7-9282-1-109.....	12	9-800-2-SN.....	72
5-262-213.....	80	7-9290-4-13.....	25	9-9174-2-108.....	76
5-263-213.....	80	7-9291-5-13.....	25	9-9180-2-101.....	40
5-264-213.....	80	7-9292-7-13.....	25	9-9192-2-13.....	51
5-400-13.....	78	7-9302-4-13.....	27	9-9202-2-11.....	5
5-401-13.....	78	7-9401-1-11.....	14	9-9220-2-107.....	23
5-402-13.....	78	7-9402-1-11.....	14	9-9233-2-13.....	33
5-700-113.....	82	8-1075-2-11.....	63	9-9240-1-109.....	62
5-701-113.....	82	8-1075-3-11.....	63	9-9253-1-187.....	10
5-702-113.....	82	8-1075-4-11.....	63	9-9304-1-13.....	29
5-703-113.....	82	8-1780-2-111.....	61	9-9400-1-11.....	14, 66
5-704-113.....	82	8-1780-2-79.....	61		
6-2101-1-13.....	58	8-1780-3-111.....	61		
6-2101-1-SN.....	59	8-1780-3-79.....	61		
6-9181-4-101.....	40	8-2102-2-13.....	68		

FINISH GUIDE

02	OILED BRONZE	57	POLISHED PEWTER	111	SATIN NICKEL W/ POLISHED NICKEL ACCENTS
04	DARK BAMBOO	58	ROSE GOLD	112	WEATHERED BIRCH
05	OILED COPPER	59	DISTRESSED BRONZE	113	BRUSHED BRONZE
07	EBONY	60	AVALITE	114	BRITANNIA GOLD
8	NEW TORTOISE SHELL W/ SILVER	61	BRONZE ORE	115	RUSTIC BLACK W/ ROPE
09	CENTURY BRONZE	62	COMO BLACK W/ GOLD	117	HERITAGE BRONZE
11	POLISHED CHROME	63	WARM BRASS LUSTRE	121	MOHICAN BRONZE
12	CHATEAU LINEN	64	FIELDSTONE	122	GOLD DUST
13	ENGLISH BRONZE	65	MIDLAND BRONZE	124	FIESTA BRONZE
14	RAW STEEL	66	COTTAGE WOOD	125	RELIC RUST
15	BRONZE PATINA	67	MATTE BLACK W/ POLISHED CHROME ACCENTS	128	OXIDIZED SILVER
16	ANTIQUÉ COPPER	68	WHISKEY WOOD	129	ESPRESSO
17	FORGED BLACK	69	PEWTER	131	GUILDED BRONZE
18	ANDALUSITE	70	WEATHERVANE	132	MOONLIT BARK
19	EBONY W/ TITIAN ACCENTS	71	ARCHITECTURAL BRONZE	133	SAPELE FINISH
20	POLISHED NICKEL W/ BRONZE ACCENTS	72	RUSTIC BRONZE	167	TIERRA DE SIENNA
21	BARN WOOD	73	POLISHED NICKEL W/ GRAPHITE & WOOD ACCENTS	176	SILVER LACE
21F	BURNISHED RUSSET	74	WEATHERED WOOD	186	COMO BLACK
22	BURNISHED GOLD	75	GUNMETAL	187	BRUSHED PEWTER
23	WHITE WASHED DRIFTWOOD	76	FLORENCIAN BRONZE	192	DISTRESSED WHITE WOOD & IRON
24	HORSESHOE BLACK	77	BRONZE W/ BRASS ACCENTS	196	RECLAIMED WOOD
25	SLATE	78	GRAPHITE	211	ARGENTUM
26	POLISHED CHROME W/ SATIN CHROME ACCENTS	79	ENGLISH BRONZE W/ WARM BRASS	212	ARGENTUM & GOLD
27	INDUSTRIAL STEEL	80	MATTE WHITE	213	ENGLISH BRONZE W/ GOLD
28	OILED BURNISHED BRONZE	81	POLISHED PEWTER W/ BLACK LEATHERETTE	234	PARISIAN BRONZE
29	DISTRESSED SILVER LEAF	82	PORCELLANA	241	MOROCCAN BRONZE
30	CARBON W/ WARM BRASS ACCENTS	83	REMINGTON BRONZE	242	AGED STEEL
31	FLAT BLACK	84	RUBBED BRONZE W/ GOLD LEAF	250	MERCURY BLACK
32	ARTISAN RUST	85	RUBBED ZINC W/ SILVER LEAF	256	NEW MOCHA
33	GOLD BULLION	86	CUPRUM	272	SILVER DUST
34	SILVER LEAF	87	WOODLAND BRONZE	285	ANTIQUÉ NICKEL
35	BYZANTINE BRONZE	88	OXIDIZED BLACK	286	PENATE GOLD
39	FOSSIL STONE	89	MATTE BLACK	290	BURNISHED SIENNA
40	WALNUT PATINA	90	GALVANIZED METAL	300	ANTIQUITY
41	DURANCO	91	SUNSET BRONZE	306	OLD TUSCAN
42	GALAXY BRONZE	92	AGED IRON & WOOD	307	SILVER SPARKLE
43	VINTAGE NICKEL	95	WARM BRASS W/ BRONZE ACCENTS	322	WARM BRASS
44	CLASSIC BRONZE	96	BARRELWOOD W/ BRASS ACCENTS	323	OLD BRONZE
45	AGED WOOD	97	NATURAL WOOD & ROPE	326	AGED IRON W/ SOFT COPPER ACCENTS
46	MATTE BLACK W/ GOLD ACCENTS	100	AURORA	327	DARK WOOD W/ GUILDED BRONZE
47	DISTRESSED SILVER	101	NOBLEWOOD W/ IRON	330	TEXTURED BRONZE
48	STATUARY BRONZE	102	CANYON	332	HEIRLOOM SILVER
49	WINTERWOOD	105	EMPYREAN	AG	AUTUMN GOLD
50	HARNES LEATHER W/ RUBBED BRASS	107	BRONZE & CHROME W/ ANTIQUÉ MIRROR ACCENTS	BK/BLK	BLACK
51	VINTAGE BLACK W/ WARM BRASS	108	BRONZE W/ STAINLESS STEEL	BN	BROWNSTONE
52	BARK & GOLD	109	POLISHED NICKEL	BZ	BRONZE
53	SILVER PATINA	110	SHADOW SMOKE	CH	CHROME
54	GOLD PATINA			CM	CREAM
55	AGED IRON			DMB	DARK METALLIC BRONZE
56	NEW TORTOISE SHELL			FB	FLAT BLACK
				SN	SATIN NICKEL
				OWB	OLD WEATHERED BRONZE
				WH/WHIT	WHITE



3130 North Berkeley Lake Road NW ♦ Duluth, GA 30096
800 801 1621
TEL 404 890 7540 ♦ FAX 877 547 2869
SavoyHouse.com