

HANDMADE  
CONTROSTAMPO  
LEVEL 45  
SHAPE EVO  
SOFT TOUCH COLORS  
GEORGE

2014 Special Editions + News

**falper.**

**falper.**  
A Matter of Style

#### UNA QUESTIONE DI STILE.

Amo ciò che è unico, proporzionato, distintivo, fatto in modo da emozionare, ogni volta, ogni giorno. Ogni giorno desidero iniziarlo circondato da bellezza e dal valore di ciò che è senza tempo, in perfetto equilibrio. I prodotti e le finiture Falper sono immaginati, sviluppati e realizzati seguendo questa emozione, lavorando fianco a fianco con designer visionari, tecnici all'avanguardia e artigiani di rara capacità e selezionando materiali compositi di ultimissima generazione insieme a legni di recupero, pelli di rara fattura e metalli pregiati. Il risultato è emozionante ed elegantemente sorprendente.

#### A MATTER OF STYLE.

I love what's unique, balanced, distinctive, made to excite, every time, every day. I want to start every day surrounded by the beauty and value of what is timeless and in perfect balance. Falper's products and finishes are imagined, developed and implemented following this emotion, working side by side with visionary designers, technicians and craftsmen of rare ability, selecting the latest generation of composite materials together with reclaimed wood, leathers of rare workmanship and precious metals. The result is exciting and elegantly surprising.

04 HANDMADE

16 CONTROSTAMPO

28 LEVEL 45 MATT CERAMILUX

36 SHAPE EVO + SPECIAL WOOD

42 NEW SOFT TOUCH COLORS

48 GEORGE

HANDMADE

## HANDMADE

La collezione disegnata da Michael Schmidt nel 2013, si amplia con vasche, lavabi da terra, lavabi e mensole a parete. Forme delicate e femminili, che trasformano il bagno seguendo una poetica decisamente straordinaria, possibile soltanto quando la tradizione e l'esperienza incontrano la tecnologia 3D. / The collection designed by Michael Schmidt in 2013, expands with bathtubs, freestanding basins, above-mounted basins and wall-mounted shelves. Delicate and feminine forms, which transform the bathroom following a rather poetic extraordinary, only possible when tradition and experience meet 3D technology.

Design Michael Schmidt



HANDMADE

Vasca e lavabo Handmade realizzati in Ceramilux opaco con esclusiva lavorazione 3D della superficie esterna. / Handmade bathtub and basin made of opaque Ceramilux with exclusive 3D processing of the outer surface.



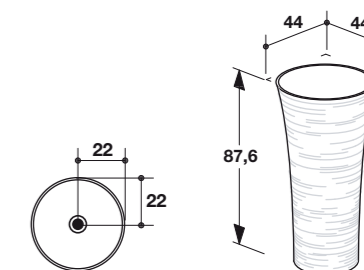
HANDMADE



Lavabo a terra dall'esclusiva forma sinuosa con inclinazione frontale lievemente più accentuata per favorire un più agevole utilizzo. / Freestanding basin with an exclusive curve shape and slightly accentuated frontal inclination for an easier use.

009

**Art. WA9**  
Lavabo freestanding in Ceramilux  
Freestanding washbasin in Ceramilux  
cm 44 x 44 x h 87,6



HANDMADE

Vasca a centro stanza dalle dimensioni contenute all'esterno, seppur generose all'interno. Il troppo pieno è integrato nelle pareti laterali della vasca e i bordi e le linee interne offrono un'esperienza unica e particolarmente morbida. / Freestanding bathtub with restrained outside dimensions, even though generous on the inside. The overflow is integrated in the side walls of the tub and the edges and inner lines offer a unique and very soft experience.



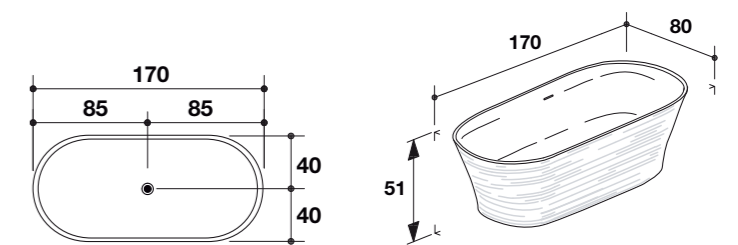
HANDMADE



La vasca dalla forma accogliente ed organica è lavorata dai nostri tecnici attraverso la tecnologia 3D per dare al Ceramilux spessori e forme altrimenti impossibili. / The bathtub, with its cozy and organic shapes, is processed by our technicians through 3D technology to give Ceramilux thicknesses and forms that would be impossible otherwise.

013

**Art. WA8**  
Vasca da bagno in Ceramilux  
Bathtub made in Ceramilux  
cm 170 x 80 x h 51





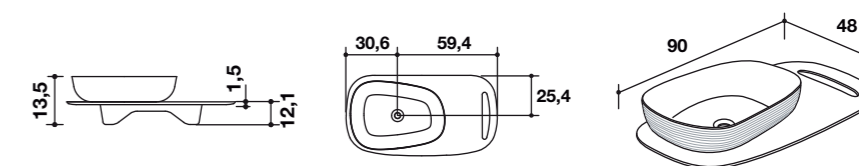
HANDMADE



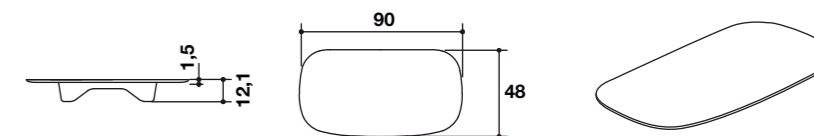
015

Lavabo da appoggio su mensola in Ceramilux con fissaggio diretto a parete.  
Countertop basin on wall mounted shelf in Ceramilux.  
cm 90 x 48 x h 13,5

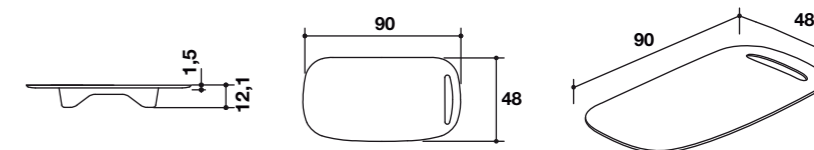
Art. #28



Art. D5G



Art. D5F



## CONTROSTAMPO

Disegnata da Dario Gaudio e Vittorio Venezia, CONTROSTAMPO, vincitrice del Cristalplant Design Contest 2013, è una collezione dichiaratamente ispirata al linguaggio degli oggetti industriali e rappresenta un nuovo modo di interpretare l'ambiente bagno nel settore contract. Vasca da bagno e lavabo freestanding, il tutto realizzato in Cristalplant Biobased® e disponibile anche con finiture in corten metallico spruzzato sulle superfici esterne per accentuare i segni di un'estetica che non nasconde nulla. / Designed by Dario Gaudio and Vittorio Venezia, winner of the Cristalplant Design Contest 2013, CONTROSTAMPO draws inspiration from industrial objects and represents a new way to interpret the bathroom in the contract sector. Freestanding bathtub and sink, all made in Cristalplant Biobased® also available with liquid corten finishing on the outer surfaces to accentuate the signs of an aesthetic that hides nothing.

Design Dario Gaudio + Vittorio Venezia





Il lavabo a terra poggia sugli ampi supporti costituiti dal prolungamento delle parti costruttive dell'elemento stesso. Il sifone in metallo resta visibile nella parte posteriore del lavabo, fino al collegamento a terra o a parete. / The freestanding basin rests upon the wide supports consisting in the extension of the structural parts of the element itself. The metal siphon stays visible in the back of the sink, up to its connection to the ground or to the wall.

CONTROSTAMPO



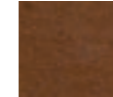
FINITURE / FINISHINGS

Cristalplant  
Biobased



METALLI / METALS

Corten liquido  
Liquid Corten



SOFT TOUCH COLORS

Nero  
Black



Rame  
Copper



Azzurro polvere  
Dust blue



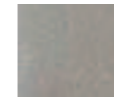
Grigio cemento  
Cement grey



Verde  
Green



Resina cemento  
Cement resin



Fango  
Mud



Ferro  
Iron



Melanzana  
Eggplant

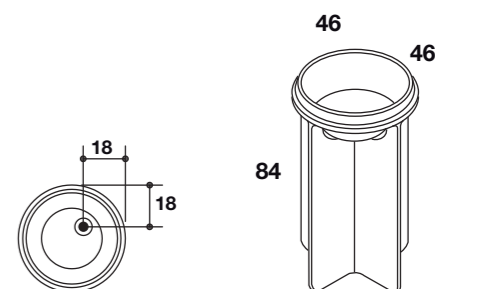


Visone  
Mink



La finitura in corten liquido è ottenuta per ossidazione su verniciatura metallica e protetta con verniciatura trasparente.  
The corten finishing is obtained by oxidation of metallic paint and protected with transparent coating.

**Art. WA7**  
Lavabo da terra in Cristalplant Biobased  
Freestanding washbasin in Cristalplant Biobased  
cm 46 x 46 x h 84



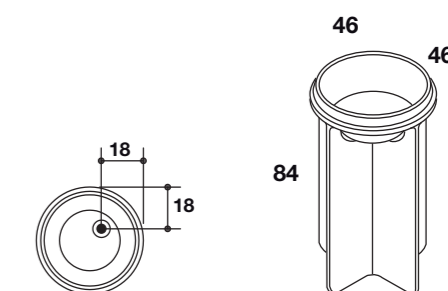
CONTROSTAMPO



Lavabi freestanding della serie CONTROSTAMPO nella versione finitura in corten metallico. Questa particolare lavorazione delle superfici in Cristalplant Biobased accentua il carattere industriale della collezione ed è realizzata con un autentico processo di ossidazione su verniciatura metallica. / Freestanding basins of the CONTROSTAMPO collection with liquid corten finishing. This special surface processing on Cristalplant Biobased accentuates the industrial character of the collection and is made through an authentic process of oxidation of metallic paint.

023

**Art. WA7**  
Lavabo da terra in Cristalplant Biobased  
Freestanding washbasin in Cristalplant Biobased  
cm 46 x 46 x h 84



CONTROSTAMPO

La vasca della collezione CONTROSTAMPO con finitura corten. L'aspetto risoluto che si ottiene con la lavorazione delle pareti esterne si bilancia perfettamente con le forme essenziali per ricreare nell'ambiente bagno un'atmosfera unica e personale. / The CONTROSTAMPO bathtub with corten finishing. The resolute appearance obtained through the processing of the outer walls is perfectly balanced with the basic shapes, and creates a unique and personal atmosphere in the bathroom.





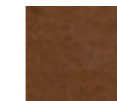
FINITURE / FINISHINGS

Cristalplant  
Biobased



METALLI / METALS

Corten liquido  
Liquid Corten



SOFT TOUCH COLORS

Nero  
Black



Rame  
Copper



Azzurro polvere  
Dust blue



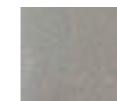
Grigio cemento  
Cement grey



Verde  
Green



Resina cemento  
Cement resin



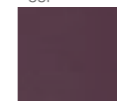
Fango  
Mud



Ferro  
Iron



Melanzana  
Eggplant

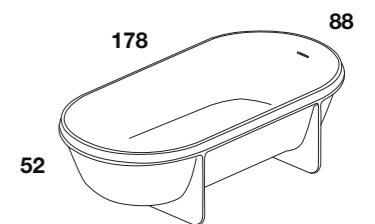
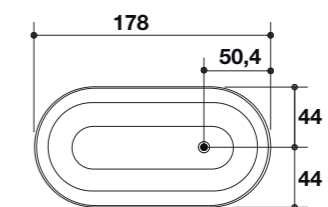


Visone  
Mink



La finitura in corten liquido è ottenuta per ossidazione su verniciatura metallica e protetta con verniciatura trasparente. The corten finishing is obtained by oxidation of metallic paint and protected with transparent coating.

**Art. WA6**  
Vasca da centro stanza in Cristalplant Biobased  
Freestanding bathtub in Cristalplant Biobased  
cm 178 x 88 x h 52



## LEVEL45 MATT CERAMILUX

La collezione che ha ridisegnato il bagno, perfettamente bilanciata nelle forme e nelle dimensioni, si arricchisce con le vasche in Ceramilux opaco. Forme e dimensioni uniche e senza tempo, accentuate da una superficie matt, incredibilmente elegante e sofisticata. / The collection that redesigned the bathroom, perfectly balanced in shape and size, enhanced with bathtubs in opaque Ceramilux. Unique and timeless shapes accentuated by a matt surface, incredibly elegant and sophisticated.

Design Naghi Habib





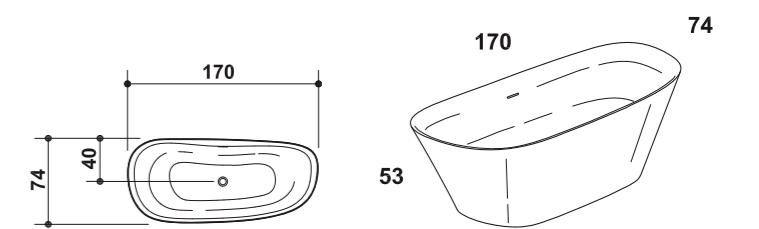
LEVEL 45 MATT CERAMILUX





La vasca LEVEL 45 in Ceramilux opaco si va ad aggiungere alle altre vasche Falper, che, già premiate con il Red Dot Design Award nel 2007, continuano ad essere il punto di riferimento del settore. / The LEVEL45 bathtubs in matt Ceramilux come in addition to the other Falper bathtubs, which, already awarded with the Red Dot Design Award in 2007, continue to be the benchmark in the industry.

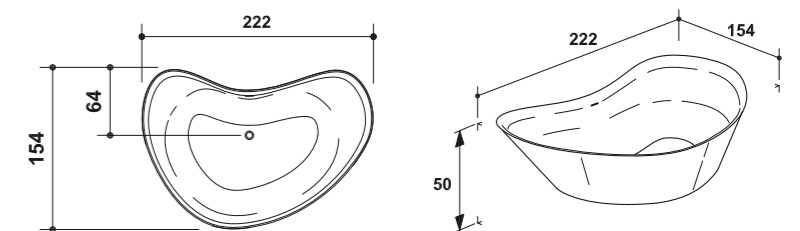
**Art. WA3**  
Vasca da centro stanza in Ceramilux opaco  
Freestanding bathtub in matt Ceramilux  
cm 170 x 74 x h 53





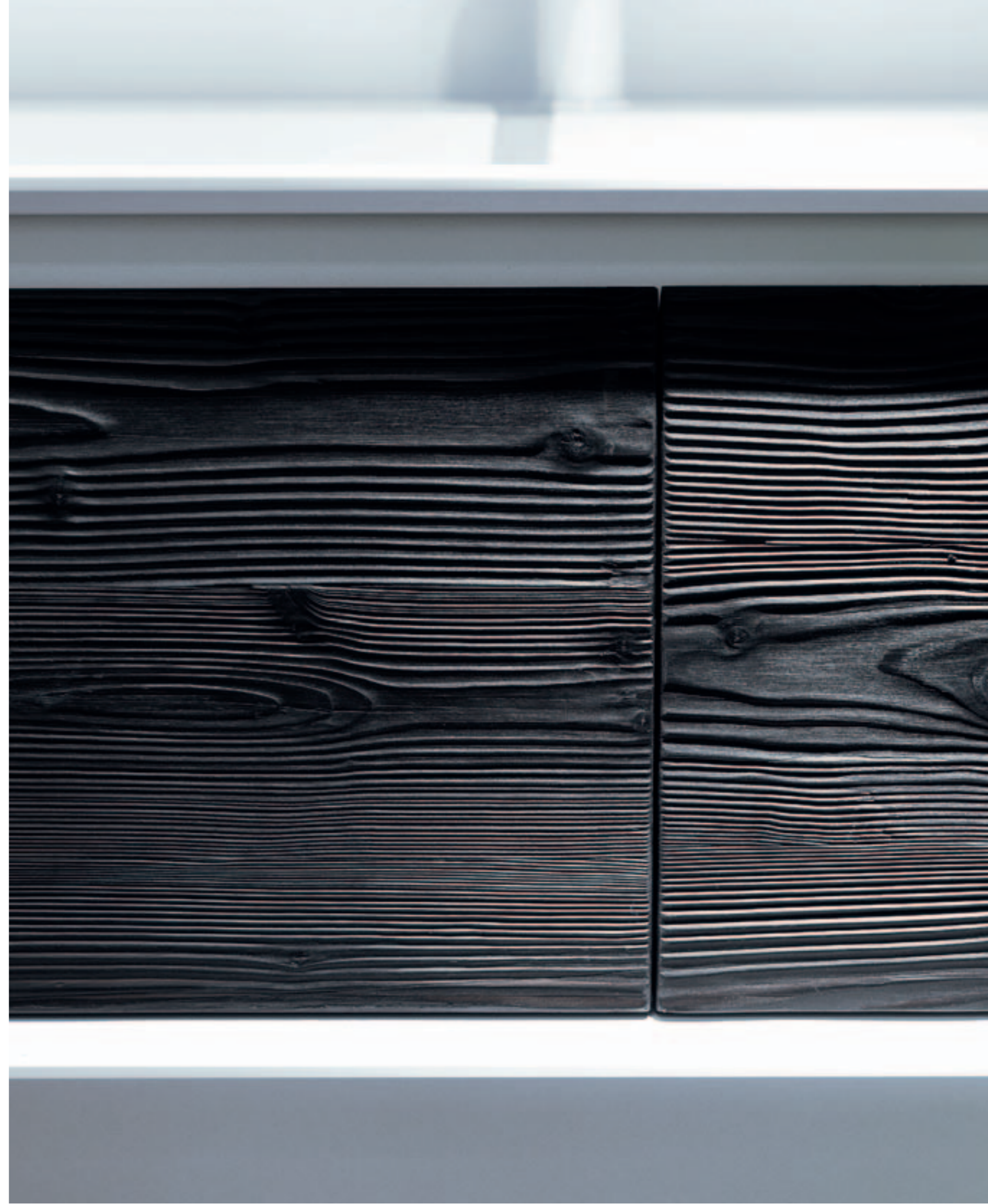
Vasca King Size, imponenti dimensioni e curve fluide si uniscono per creare un'accogliente scultura da centrostanza, diventando indiscussa protagonista dell'ambiente bagno. / King Size bathtub, imposing dimensions and fluid curves combine to create an inviting freestanding sculpture, becoming the undisputed protagonist of the bathroom.

**Art. WA5**  
Vasca freestanding in Ceramilux opaco  
Freestanding bathtub in matt Ceramilux  
cm 222 x 154 x 50



## SHAPE EVO + SPECIAL WOOD

La lavorazione artigianale del legno di abete bruciato e del del larice termotrattato, conferiscono alla collezione SHAPE EVO un'unica matericità in perfetto equilibrio tra evoluzione e tradizione.  
/ The craftsmanship of the burned spruce and thermotreated larch wood, give the SHAPE EVO collection a unique materiality in perfect balance between evolution and tradition.



SHAPE EVO + SPECIAL WOOD



Doppio mobile da 183 + 183 cm con lavabo LARGE e frontali in Abete seconda patina bruciato e colonne a parete da 23 x 43 x h 180 cm ad incasso parziale. / Double furniture 183 + 183 cm with LARGE sink with fronts in second coat burned spruce and semi built-in wall columns from 23 x 43 x h 180 cm.



Ultima evoluzione della collezione SHAPE questa versione in legno pregiato unisce l'autenticità del design a quella della materia. Un connubio di assoluta eccellenza. / The latest evolution of the SHAPE Collection, this version in fine wood combines the authenticity of design to that of matter. A combination of absolute excellence.

**SHAPE EVO**

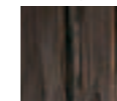
I legni speciali sono disponibili nei frontali di tutti i mobili e nelle colonne ad anta della collezione, mentre le colonne a giorno sono realizzate interamente in finitura. / The special wood is available for the fronts of all the furniture and columns with door of the collection, while the brightly hanging columns are made entirely in wood.



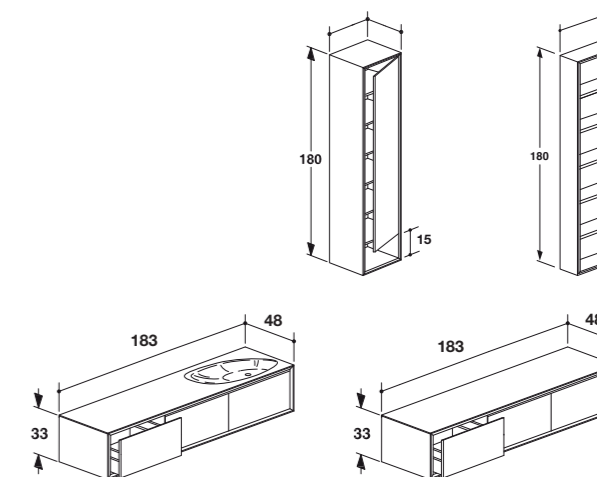
**LEGNI / WOOD**

Abete Seconda  
Patina Bruciato  
First coat  
burned spruce

Larice  
termotrattato  
Heat treated  
larch

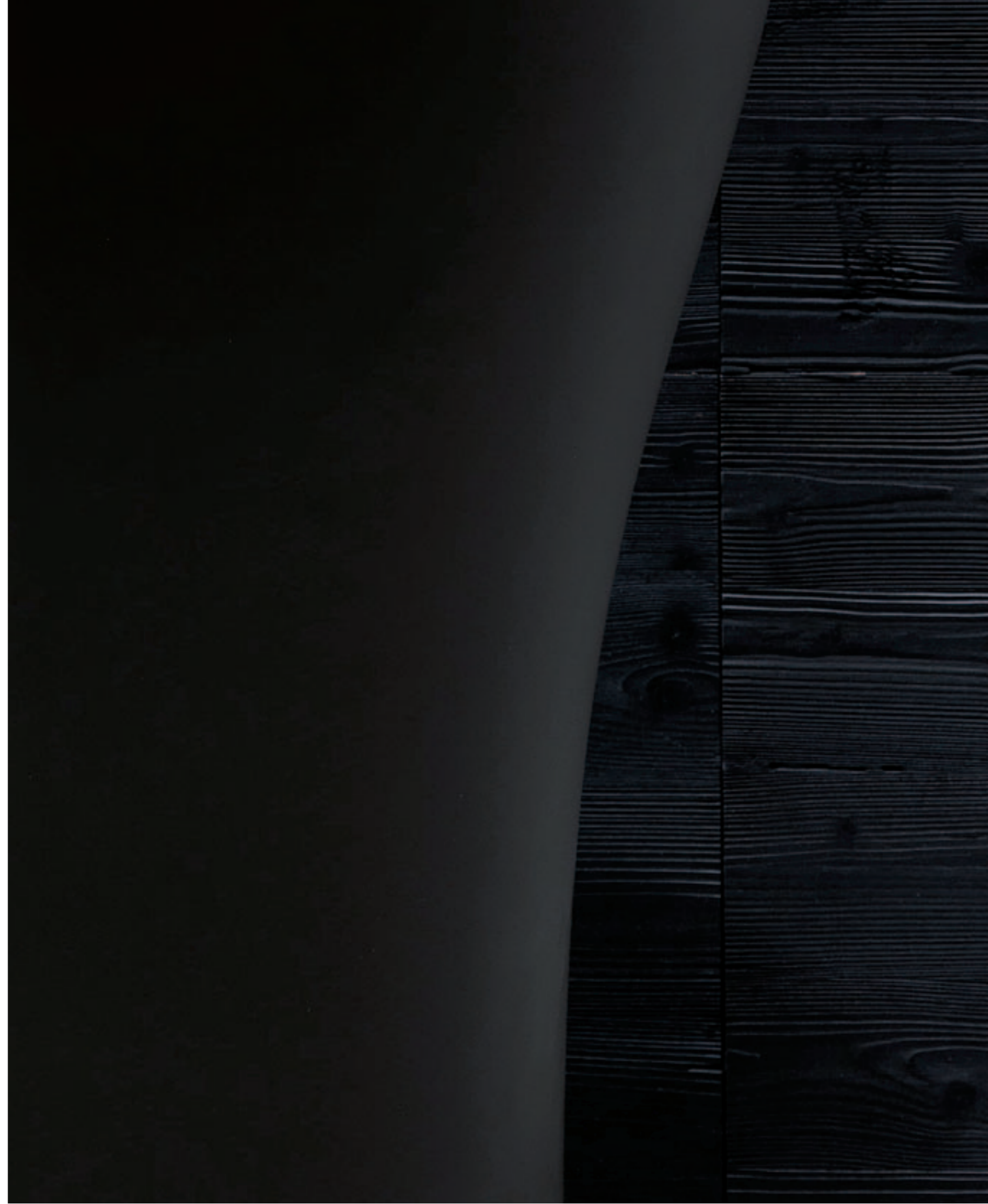


Legni di recupero con superficie bruciata e termotrattata, protetti da verniciatura trasparente acrilica. / Recycled wood with burnt and heat-treated surface, protected by a transparent acrylic coating.



## NEW SOFT TOUCH COLORS

Fango, ferro, visone e melanzana, questi i nomi delle nuove finiture soft touch disponibili sulla intera gamma di arredi in Cristalplant Biobased e Ceramilux, che divengono così ancor più eleganti ed esclusivi. / Mud, iron, mink and eggplant, these are the names of the new soft-touch finishes available on the full range of Biobased Cristalplant and Ceramilux furniture, so that they become even more elegant and exclusive.



NEW SOFT TOUCH COLORS

Vasca SCOOP in finitura Visone soft touch  
con camino ATTRAVERSO in corten e cristallo  
extra chiaro. / SCOOP bathtub in soft touch  
Mink finish with fireplace ATTRAVERSO in  
corten and extra clear crystal.

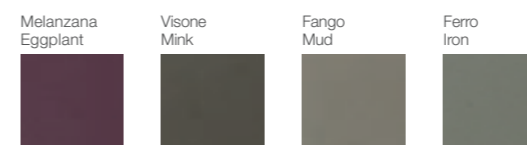






Lavabo a terra SCOOP in finitura visone soft touch su parete in abete seconda patina, spazzolato e bruciato. Specchio a filo lucido con illuminazione laterale. / Freestanding SCOOP washbasin in soft touch Mink finish, on a wall in second veneer spruce, brushed and burned. Polished edge mirror with side lighting.

NUOVI COLORI SOFT TOUCH/ NEW SOFT TOUCH COLOURS



I colori soft touch Falper sono ottenuti con procedimento a caldo e sono adeguati all'uso esterno su sanitari ed arredi, seppur unicamente morbidi al tatto. / The soft touch colors of Falper are heat coated and are proofed for sanitaryware use notwithstanding the soft touch surface.

## GEORGE

Collezione al maschile, solida ed elegante, scelta sempre più da personalità e leader di tutto il mondo, George si impreziosisce con materiali particolarmente esclusivi come le pelli Baxter, il rame lucido e spazzolato e l'acciaio inox in finitura titanio. Ma anche di nuove specchiere e di una imponente vasca da bagno realizzata portando all'estremo le tecnologie di lavorazione del Ceramilux, dei metalli e del legno. / A male collection, strong and elegant, chosen more and more by personalities and leaders from around the world, George enhances with particularly exclusive materials such as the Baxter leathers, polished and brushed copper, stainless steel in titanium finish. But also new mirrors and a huge bathtub achieved by bringing the processing technologies of Ceramilux, metal and wood to the extreme, are now part of the collection.

Design Michael Schmidt + Falper Design



## GEORGE

Installazione con lavabo freestanding GEORGE con cono in Bo Hemian Kaki e complementi in finiture in rame lucido e vasca da centrostanza abbinata. Le parti in pelle sono disponibili in tutte le pelli e nelle finiture in legno laccato e opaco a catalogo. / Installation with freestanding washbasin GEORGE, cone in Bo Hemian Khaki, accessories finishes in polished copper and combined room centerpiece bathtub. The leather parts are available in all leathers and finishes in matt lacquered wood in the catalog.



GEORGE



Lavabo George in abbinamento Ceramilux opaco, rame lucido e pelle Baxter Bo Hemian Kaki, specchiera George con cornice in rame lucido. / George washbasin in combination matt Ceramilux, polished copper and Baxter leather Bo Hemian Kaki, George mirror with frame in polished copper.

053

**Art. DX1**  
Lavabo freestanding in Ceramilux opaco  
Freestanding washbasin in matt Ceramilux  
cm 58 x 58 x h 87

COLORI / COLOURS

Bo Hemian  
Kaki



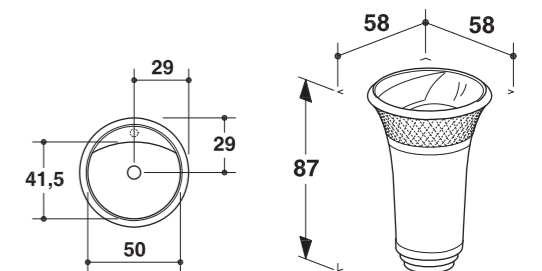
Rame lucido  
Glossy copper



Ceramilux lucido  
Glossy Ceramilux



Gamma completa delle finiture possibili a pag.079  
Full range of possible finishes at page 079



GEORGE



GEORGE



Lavabo George in abbinamento Ceramilux lucido, acciaio lucido e pelle Baxter River Nelson, specchiera George con cornice in acciaio lucido. / George washbasin in combination glossy Ceramilux, polished steel and Baxter leather River Nelson, George mirror with frame in polished steel.

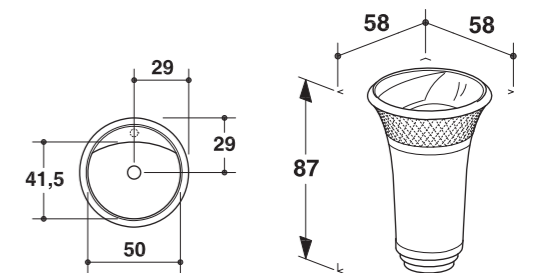
057

**Art. DX1**  
Lavabo freestanding in Ceramilux lucido  
Freestanding washbasin in glossy Ceramilux  
cm 58 x 58 x h 87

COLORI / COLOURS



Gamma completa delle finiture possibili a pag.079  
Full range of possible finishes at page 079

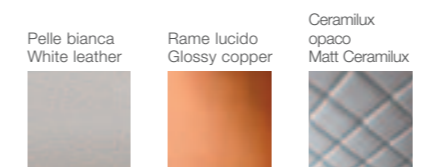




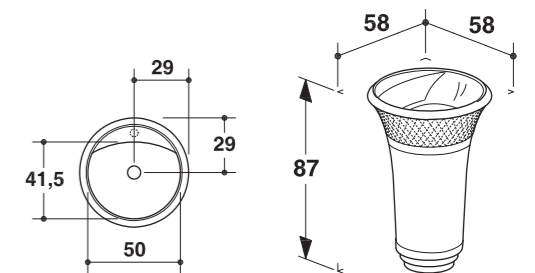
Lavabo George in abbinamento Ceramilux opaco, rame lucido e ecopelle bianca per uso nautico, specchiera George con cornice in rame lucido. / George washbasin in combination matt Ceramilux, glossy copper and white nautical eco-leather, George mirror with frame in glossy copper.

**Art. DX1**  
 Lavabo freestanding in Ceramilux opaco  
 Freestanding washbasin in matt Ceramilux  
 cm 58 x 58 x h 87

MATERIALI / MATERIALS



Ecopelle sintetica per uso nautico con elevata resistenza alla luce e all'abrasione.  
 Synthetic eco-leather for nautical use with high resistance to abrasion and light.



GEORGE





GEORGE



Lavabo George in abbinamento Ceramilux opaco, acciaio Titanium e pelle Baxter Bo Hemian Siberia, specchiera George con cornice in acciaio Titanium. / George washbasin in combination matt Ceramilux, Stainless Steel Titanium and Baxter leather Bo Hemian Siberia, George mirror with frame in Stainless Steel Titanium.

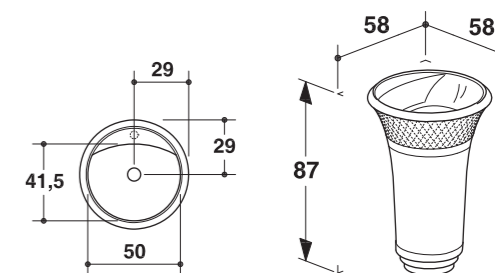
063

**Art. DX1**  
 Lavabo freestanding in Ceramilux opaco  
 Freestanding washbasin in matt Ceramilux  
 cm 58 x 58 x h 87

MATERIALI / MATERIALS



Gamma completa delle finiture possibili a pag.079  
 Full range of possible finishes at page 079



GEORGE

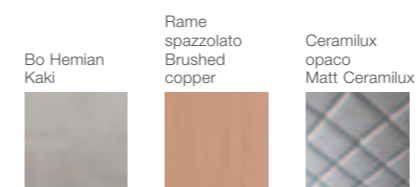


Lavabo George in abbinamento Ceramilux opaco, rame spazzolato e pelle Baxter Bo Hemian Kaki, specchiera George con cornice in rame lucido. / George washbasin in combination matt Ceramilux, Brushed copper and Baxter leather Bo Hemian Kaki, George mirror with frame in glossy copper.

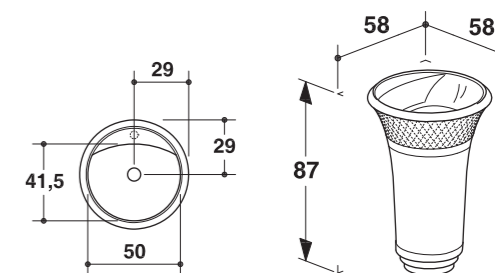
065

**Art. DX1**  
Lavabo freestanding in Ceramilux opaco  
Freestanding washbasin in matt Ceramilux  
cm 58 x 58 x h 87

MATERIALI / MATERIALS



Gamma completa delle finiture possibili a pag.079  
Full range of possible finishes at page 079



GEORGE



Lavabo George in abbinamento Ceramilux opaco, acciaio lucido e fusto in legno finitura noce bruciato, specchiera George con cornice in acciaio lucido. / George washbasin in combination matt Ceramilux, polished stainless steel and burned walnut, George mirror with frame in polished stainless steel.

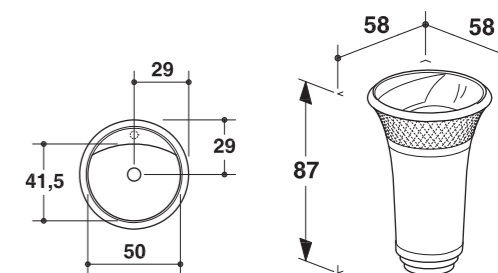
067

**Art. DX1**  
Lavabo freestanding in Ceramilux opaco  
Freestanding washbasin in matt Ceramilux  
cm 58 x 58 x h 87

MATERIALI / MATERIALS



Gamma completa delle finiture possibili a pag.079  
Full range of possible finishes at page 079



GEORGE



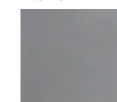
Colonne George, posizionabili ad incasso ed a parete, con schienale in rame lucido, spazzolato e acciaio lucido e Titanium. / Built-in or wall mounted George columns with back in glossy or brushed copper, and polished stainless steel and Titanium.

069

**Art. DXW**  
 Colonna con schienale in rame  
 Column with copper back  
 cm 60 x 18 x h 180

METALLI / METALS

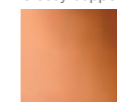
Acciaio Inox  
 Titanium  
 Stainless Steel  
 Titanium



Acciaio inox  
 lucido  
 Polished  
 stainless steel



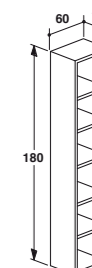
Rame lucido  
 Glossy copper



Rame spazzolato  
 Brushed copper



Le parti in legno delle colonne sono disponibili in tutte le finiture Falper.  
 The wooden parts of the columns are available in all Falper finishes.



GEORGE



La vasca della collezione è una autentica scultura realizzata in Ceramilux lucido, rame e noce canaletto bruciato, per la realizzazione della quale, le tecnologie coinvolte sono state portate all'estremo. / The bathtub of the collection is an authentic sculpture made of glossy Ceramilux, copper and burnt walnut, for the realization of which, the involved technologies have been taken to the extreme.

GEORGE

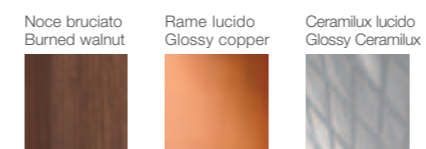


Vasca in Noce canaletto bruciato e rame lucido, con specchiera GEORGE 150 x 150 cm in rame lucido. / Bathtub in burnt walnut and polished copper, with GEORGE mirror 150 x 150 cm in glossy copper.

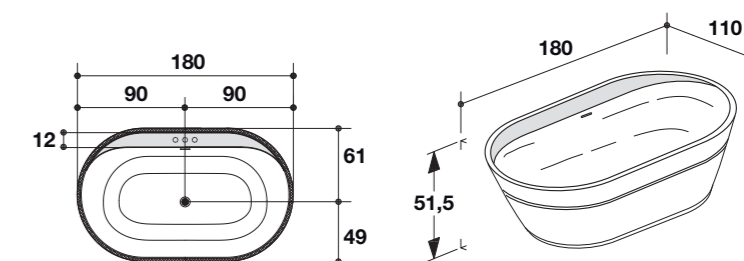
073

**ART. DXD**  
 Vasca da centro stanza in Ceramilux lucido o opaco, metallo e legno  
 Freestanding bathtub in glossy or matt Ceramilux, metal and wood  
 cm 110 x 180 x h 51,5

MATERIALI / MATERIALS



Gamma completa delle finiture possibili a pag.079  
 Full range of possible finishes at page 079





Vasca centro stanza in noce bruciato e acciaio Titanium, su Ceramilux lucido. Specchiera GEORGE da 150 x 150 cm in acciaio Titanium. / Freestanding bathtub in burnt walnut and steel Titanium on glossy Ceramilux. Mirror GEORGE 150 x 150 cm in steel Titanium.

METALLI / METALS

Acciaio Inox  
Titanium  
Stainless Steel  
Titanium



Acciaio inox  
lucido  
Polished  
stainless steel



Rame lucido  
Glossy copper



Rame spazzolato  
Brushed copper

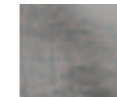


PELLI / LEATHERS

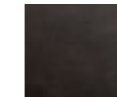
Bo Hemian  
Kaki



Bo Hemian  
Siberia



River Nelson



Kashmir  
Nuage



Kashmir  
Fumée



LEGNI / WOOD

Disponibili in tutte le finiture legno e laccato opaco della collezione George. / Available in all wood and matt lacquered finishings of the George collection.

Noce bruciato  
Burned walnut



Legni laccati  
Lacquered wood



ECOPELLE / ECO-LEATHER

Ecopelle bianca  
White eco-leather



MATERIALI / MATERIALS

Ceramilux lucido  
Glossy Ceramilux



Ceramilux opaco  
Matt Ceramilux



Gamma completa delle finiture possibili a pag.079  
Full range of possible finishes at page 079



Specchio contenitore ad anta con ripiani interni in cristallo extra chiaro. La cornice ed i profili maniglia sono realizzati in rame o in acciaio lucido e Titanium, l'interno è disponibile in tutte le finiture della collezione George. / Mirror cabinet with door, shelves in extra-clear glass. The frame and handles are made in copper, polished stainless steel or Stainless Steel Titanium. The interior is available in all the finishes of the GEORGE collection.

077

METALLI / METALS

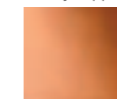
Acciaio Inox  
Titanium  
Stainless Steel  
Titanium



Acciaio inox  
lucido  
Polished  
stainless steel



Rame lucido  
Glossy copper



Rame spazzolato  
Brushed copper



LEGNI / WOOD

Noce bruciato  
Burned walnut

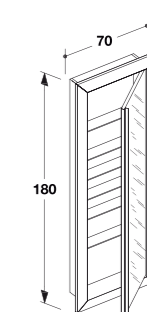


Legni laccati  
Lacquered wood



Disponibili in tutte le finiture legno e laccato opaco della collezione George. Available in all wood and matt lacquered finishings of the George collection.

**Art. DXF**  
Specchio contenitore in legno con cornice in metallo  
Wooden mirror with metal case  
cm 70 x 14 x h 180





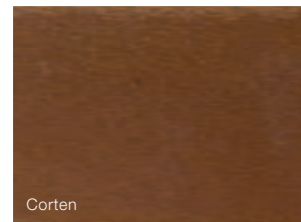
## NUOVE FINITURE / NEW FINISHINGS

### COLORAZIONI SOFT TOUCH / SOFT TOUCH COLORS



Collections: BOWL / SCOOP / CONTROSTAMPO

### FINITURA CORTEN LIQUIDO / LIQUID CORTEN FINISHING



La finitura corten liquido è ottenuta per ossidazione della vernice metallica applicata al prodotto. La superficie viene poi protetta da una verniciatura trasparente. / The liquid corten finishing is obtained by oxidation of the metallic paint applied to the product. The surface is then protected by a transparent coating.

Collections: BOWL / SCOOP / CONTROSTAMPO

### LEGNI SPECIALI / SPECIAL WOOD



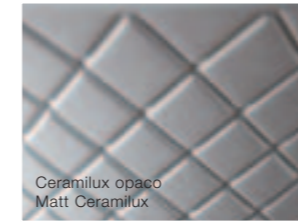
I legni speciali sono realizzati in collaborazione con Haute Material e comportano finiture artigianali di altissimo pregio. L'abete viene ottenuto dalla seconda patina del legno di recupero e successivamente bruciato e lavorato per spatolatura. Il larice subisce la stessa lavorazione manuale oltre al termotrattamento. La superficie è protetta da una vernice acrilica trasparente. / The special woods are made in collaboration with Haute Material and involve handcrafted finishes of the highest quality. The fir is obtained from the second coat of reclaimed wood and then burnt and worked with tooling. The larch goes the same manual processing in addition to the heat treatment. The surface is protected by a transparent acrylic paint.

Collections: SHAPE EVO

## NUOVE FINITURE COLLEZIONE GEORGE / NEW FINISHINGS GEORGE COLLECTION

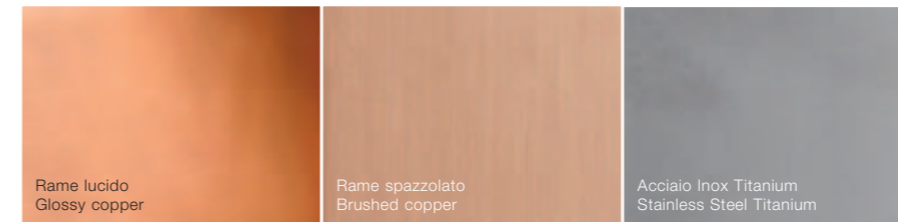
Di seguito la nuova gamma colori e finiture George da considerarsi in aggiunta alle finiture standard previste dalla collezione. / Here follow the new range of colours and finishings to be considered additional to the collection's standard finishings.

### CERAMILUX



Ceramilux opaco  
Matt Ceramilux

### COMPLEMENTI IN METALLO / METAL ELEMENTS



Le componenti in metallo e le cornici della collezione GEORGE possono essere realizzati in vero rame lucido o spazzolato, con trattamento anti ossidazione ed in acciaio inox lucido o finitura Titanium. / The metal components and the frames of the GEORGE collection can be made in real glossy or brushed copper with anti-oxidation and polished stainless steel and Titanium finish.

### RIVESTIMENTO IN ECOPELLE / ECO-LEATHER FINISHING



Pelle bianca  
White Leather

Ecopelle sintetica creata appositamente per uso nautico e outdoor con elevata resistenza alla luce e all'abrasione. / Synthetic eco-leather specifically created for the outdoor and nautical use, with high resistance to abrasion and light.

### RIVESTIMENTI IN PELLE BAXTER / BAXTER LEATHER FINISHINGS



Bo.Hemian Kaki

Bo.Hemian Siberia

River Nelson

Kashmir Nuage

Kashmir Fumée

Pelli intere, in primo fiore, trattate con concie e procedimenti speciali che esaltano il vissuto e la morbidezza. Le pelli Baxter sono uniche, irripetibili esattamente come i prodotti Falper. Vanno trattate con cura e curate come si deve ai prodotti di grande pregio. In dotazione con ogni elemento George finito in pelle Baxter il vanity kit per la cura e la manutenzione. / whole full grain leathers, treated with tanning and special procedures that enhance the experience and softness. Baxter leathers are unique, unrepeatable just like Falper products. To be treated with care and attention as products of great value deserve. For every GEORGE element with Baxter leather finishing the Vanity Kit for care and maintenance is included.



## CREDITS

Art Direction: Falper Design  
Styling: Katrin Zavka  
Photo: Maurizio Marcato  
Fotolito e stampa: Grafiche Antiga

## THANKS TO:

Baxter  
De Castelli  
Fantini  
Haute Material  
KWC  
Oikos  
Tom Dixon

FALPER srl  
Via Veneto 7-9  
40064 Ozzano Emilia - Bologna (Italy)  
Tel +39 051 799319  
Fax +39 051 796495  
info@falper.it  
www.falper.it